

## Floor Plans

These floor plans have been assembled as a resource for you. They may not be inclusive of every home in the community.

Please note that over time, owners may make modifications to spaces that may not be captured in these original floor plans.

Renderings are not a guarantee of space measurement. Interested parties should verify through their own secured services.

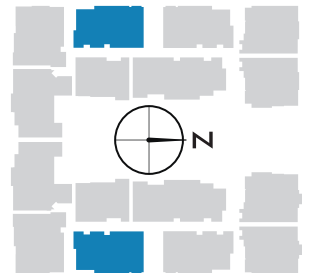


Under Air - 2,733 sq. ft.

Balcony - 305 sq. ft.

Total Living Area

**3,038 sq. ft.**



# Residential Features

## KITCHEN

- ▶ Sub-Zero/Wolf appliance package including the following:
  - 36" Sub-Zero integrated column refrigerator with 18" Sub-Zero integrated freezer with ice maker
  - 36" Wolf 5-burner gas cooktop
  - Wolf cooktop wall hood
  - 30" Wolf electric wall oven
  - 24" Wolf standard microwave
  - Miele 24" built-in dishwasher
  - Sub-Zero 46 bottle capacity under-counter wine cooler
- ▶ Selection of quartz countertop options
- ▶ Selection of Dornbracht faucets
- ▶ Franke Cube single bowl sink
- ▶ In-Sink-Erator pro series garbage disposal

## FLOORING

- ▶ Selection of Legno Bastone wood flooring, or large-scale "wood look" plank porcelain tile available for all hard surface areas

## PATIO FEATURES/COURTYARD LEVEL ONLY

- ▶ Trellis-covered hot tub
- ▶ Outdoor kitchen w/ gas grill and sink
- ▶ Fire table

## CABINETS

- ▶ Selection of Irpina cabinetry in door style options including Décor, Palermo, Tuscon, Vienna and Phoenix. Finishes available include matte laquer, maple wood and laminate
- ▶ Selection of chrome, brushed nickel or matte black cabinet hardware
- ▶ Cutlery divider
- ▶ Blind corner pullouts
- ▶ Shallow pantry pullouts
- ▶ Cooktop pullouts
- ▶ Multiple drawer stacks
- ▶ Double waste pullout
- ▶ Soft-close doors and drawers



Model Center Open Daily | 1030 3rd Ave South #101

NaplesQuattro.com | 239.228.5800



There are various methods for calculating the total square footage of a condominium unit, and depending on the method of calculation, the quoted square footage of a condominium unit may vary by more than a nominal amount. The dimensions stated in this brochure are measured to the exterior boundaries of the exterior walls and the centerline of interior demising walls and, in fact, are larger than the dimensions of the "Unit" as defined in the Declaration of Condominium for WSR Old Naples 4, LLC, which are measured using interior measurements. All dimensions are approximate and all floor plans and development plans subject to change.

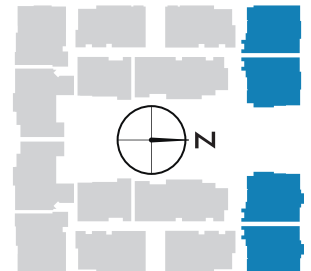


Under Air - 2,898 sq. ft.

Balcony - 237 sq. ft.

Total Living Area

**3,135 sq. ft.**





# Residential Features

## KITCHEN

- ▶ Sub-Zero/Wolf appliance package including the following:
  - 36" Sub-Zero integrated column refrigerator with 18" Sub-Zero integrated freezer with ice maker
  - 36" Wolf 5-burner gas cooktop
  - Wolf cooktop wall hood
  - 30" Wolf electric wall oven
  - 24" Wolf standard microwave
  - Miele 24" built-in dishwasher
  - Sub-Zero 46 bottle capacity under-counter wine cooler
- ▶ Selection of quartz countertop options
- ▶ Selection of Dornbracht faucets
- ▶ Franke Cube single bowl sink
- ▶ In-Sink-Erator pro series garbage disposal

## FLOORING

- ▶ Selection of Legno Bastone wood flooring, or large-scale "wood look" plank porcelain tile available for all hard surface areas

## PATIO FEATURES/COURTYARD LEVEL ONLY

- ▶ Trellis-covered hot tub
- ▶ Outdoor kitchen w/ gas grill and sink
- ▶ Fire table

## CABINETS

- ▶ Selection of Irpina cabinetry in door style options including Décor, Palermo, Tuscon, Vienna and Phoenix. Finishes available include matte laquer, maple wood and laminate
- ▶ Selection of chrome, brushed nickel or matte black cabinet hardware
- ▶ Cutlery divider
- ▶ Blind corner pullouts
- ▶ Shallow pantry pullouts
- ▶ Cooktop pullouts
- ▶ Multiple drawer stacks
- ▶ Double waste pullout
- ▶ Soft-close doors and drawers



Model Center Open Daily | 1030 3rd Ave South #101

NaplesQuattro.com | 239.228.5800



There are various methods for calculating the total square footage of a condominium unit, and depending on the method of calculation, the quoted square footage of a condominium unit may vary by more than a nominal amount. The dimensions stated in this brochure are measured to the exterior boundaries of the exterior walls and the centerline of interior demising walls and, in fact, are larger than the dimensions of the "Unit" as defined in the Declaration of Condominium for WSR Old Naples 4, LLC, which are measured using interior measurements. All dimensions are approximate and all floor plans and development plans subject to change.

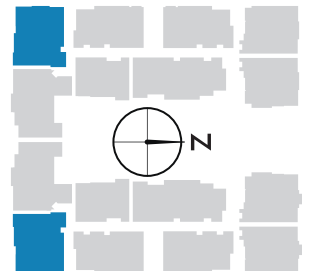


Under Air - 2,952 sq. ft.

Balcony - 237 sq. ft.

Total Living Area

**3,189 sq. ft.**



# Residential Features

## KITCHEN

- ▶ Sub-Zero/Wolf appliance package including the following:
  - 36" Sub-Zero integrated column refrigerator with 18" Sub-Zero integrated freezer with ice maker
  - 36" Wolf 5-burner gas cooktop
  - Wolf cooktop wall hood
  - 30" Wolf electric wall oven
  - 24" Wolf standard microwave
  - Miele 24" built-in dishwasher
  - Sub-Zero 46 bottle capacity under-counter wine cooler
- ▶ Selection of quartz countertop options
- ▶ Selection of Dornbracht faucets
- ▶ Franke Cube single bowl sink
- ▶ In-Sink-Erator pro series garbage disposal

## FLOORING

- ▶ Selection of Legno Bastone wood flooring, or large-scale "wood look" plank porcelain tile available for all hard surface areas

## PATIO FEATURES/COURTYARD LEVEL ONLY

- ▶ Trellis-covered hot tub
- ▶ Outdoor kitchen w/ gas grill and sink
- ▶ Fire table

## CABINETS

- ▶ Selection of Irpina cabinetry in door style options including Décor, Palermo, Tuscon, Vienna and Phoenix. Finishes available include matte laquer, maple wood and laminate
- ▶ Selection of chrome, brushed nickel or matte black cabinet hardware
- ▶ Cutlery divider
- ▶ Blind corner pullouts
- ▶ Shallow pantry pullouts
- ▶ Cooktop pullouts
- ▶ Multiple drawer stacks
- ▶ Double waste pullout
- ▶ Soft-close doors and drawers



Model Center Open Daily | 1030 3rd Ave South #101

NaplesQuattro.com | 239.228.5800



There are various methods for calculating the total square footage of a condominium unit, and depending on the method of calculation, the quoted square footage of a condominium unit may vary by more than a nominal amount. The dimensions stated in this brochure are measured to the exterior boundaries of the exterior walls and the centerline of interior demising walls and, in fact, are larger than the dimensions of the "Unit" as defined in the Declaration of Condominium for WSR Old Naples 4, LLC, which are measured using interior measurements. All dimensions are approximate and all floor plans and development plans subject to change.



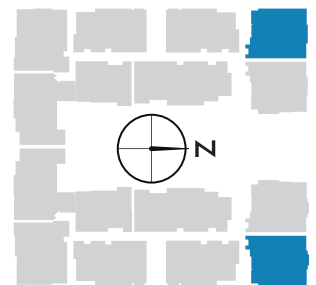
Under Air - 2,853 sq. ft.

Balcony - 274 sq. ft.

Garage - 384 sq. ft.

Total Living Area

**3,511 sq. ft.**



# Residential Features

## KITCHEN

- ▶ Sub-Zero/Wolf appliance package including the following:
  - 36" Sub-Zero integrated column refrigerator with 18" Sub-Zero integrated freezer with ice maker
  - 36" Wolf 5-burner gas cooktop
  - Wolf cooktop wall hood
  - 30" Wolf electric wall oven
  - 24" Wolf standard microwave
  - Miele 24" built-in dishwasher
  - Sub-Zero 46 bottle capacity under-counter wine cooler
- ▶ Selection of quartz countertop options
- ▶ Selection of Dornbracht faucets
- ▶ Franke Cube single bowl sink
- ▶ In-Sink-Erator pro series garbage disposal

## FLOORING

- ▶ Selection of Legno Bastone wood flooring, or large-scale "wood look" plank porcelain tile available for all hard surface areas

## PATIO FEATURES/COURTYARD LEVEL ONLY

- ▶ Trellis-covered hot tub
- ▶ Outdoor kitchen w/ gas grill and sink
- ▶ Fire table

## CABINETS

- ▶ Selection of Irpina cabinetry in door style options including Décor, Palermo, Tuscon, Vienna and Phoenix. Finishes available include matte laquer, maple wood and laminate
- ▶ Selection of chrome, brushed nickel or matte black cabinet hardware
- ▶ Cutlery divider
- ▶ Blind corner pullouts
- ▶ Shallow pantry pullouts
- ▶ Cooktop pullouts
- ▶ Multiple drawer stacks
- ▶ Double waste pullout
- ▶ Soft-close doors and drawers



Model Center Open Daily | 1030 3rd Ave South #101

NaplesQuattro.com | 239.228.5800



There are various methods for calculating the total square footage of a condominium unit, and depending on the method of calculation, the quoted square footage of a condominium unit may vary by more than a nominal amount. The dimensions stated in this brochure are measured to the exterior boundaries of the exterior walls and the centerline of interior demising walls and, in fact, are larger than the dimensions of the "Unit" as defined in the Declaration of Condominium for WSR Old Naples 4, LLC, which are measured using interior measurements. All dimensions are approximate and all floor plans and development plans subject to change.



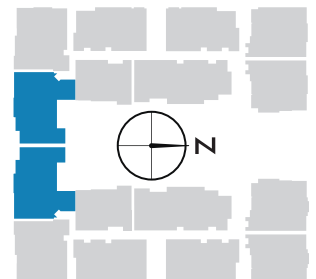


Under Air - 3,358 sq. ft.

Balcony - 495 sq. ft.

Total Living Area

**3,853 sq. ft.**



# Residential Features

## KITCHEN

- ▶ Sub-Zero/Wolf appliance package including the following:
  - 36" Sub-Zero integrated column refrigerator with 18" Sub-Zero integrated freezer with ice maker
  - 36" Wolf 5-burner gas cooktop
  - Wolf cooktop wall hood
  - 30" Wolf electric wall oven
  - 24" Wolf standard microwave
  - Miele 24" built-in dishwasher
  - Sub-Zero 46 bottle capacity under-counter wine cooler
- ▶ Selection of quartz countertop options
- ▶ Selection of Dornbracht faucets
- ▶ Franke Cube single bowl sink
- ▶ In-Sink-Erator pro series garbage disposal

## FLOORING

- ▶ Selection of Legno Bastone wood flooring, or large-scale "wood look" plank porcelain tile available for all hard surface areas

## PATIO FEATURES/COURTYARD LEVEL ONLY

- ▶ Trellis-covered hot tub
- ▶ Outdoor kitchen w/ gas grill and sink
- ▶ Fire table

## CABINETS

- ▶ Selection of Irpina cabinetry in door style options including Décor, Palermo, Tuscon, Vienna and Phoenix. Finishes available include matte laquer, maple wood and laminate
- ▶ Selection of chrome, brushed nickel or matte black cabinet hardware
- ▶ Cutlery divider
- ▶ Blind corner pullouts
- ▶ Shallow pantry pullouts
- ▶ Cooktop pullouts
- ▶ Multiple drawer stacks
- ▶ Double waste pullout
- ▶ Soft-close doors and drawers



Model Center Open Daily | 1030 3rd Ave South #101

NaplesQuattro.com | 239.228.5800



There are various methods for calculating the total square footage of a condominium unit, and depending on the method of calculation, the quoted square footage of a condominium unit may vary by more than a nominal amount. The dimensions stated in this brochure are measured to the exterior boundaries of the exterior walls and the centerline of interior demising walls and, in fact, are larger than the dimensions of the "Unit" as defined in the Declaration of Condominium for WSR Old Naples 4, LLC, which are measured using interior measurements. All dimensions are approximate and all floor plans and development plans subject to change.

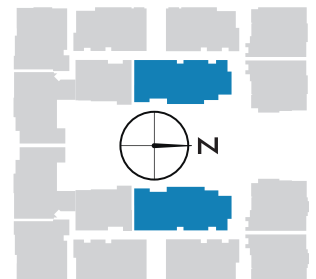


Under Air - 3,437 sq. ft.

Balcony - 438 sq. ft.

Total Living Area

**3,875 sq. ft.**



# Residential Features

## KITCHEN

- ▶ Sub-Zero/Wolf appliance package including the following:
  - 36" Sub-Zero integrated column refrigerator with 18" Sub-Zero integrated freezer with ice maker
  - 36" Wolf 5-burner gas cooktop
  - Wolf cooktop wall hood
  - 30" Wolf electric wall oven
  - 24" Wolf standard microwave
  - Miele 24" built-in dishwasher
  - Sub-Zero 46 bottle capacity under-counter wine cooler
- ▶ Selection of quartz countertop options
- ▶ Selection of Dornbracht faucets
- ▶ Franke Cube single bowl sink
- ▶ In-Sink-Erator pro series garbage disposal

## FLOORING

- ▶ Selection of Legno Bastone wood flooring, or large-scale "wood look" plank porcelain tile available for all hard surface areas

## PATIO FEATURES/COURTYARD LEVEL ONLY

- ▶ Trellis-covered hot tub
- ▶ Outdoor kitchen w/ gas grill and sink
- ▶ Fire table

## CABINETS

- ▶ Selection of Irpina cabinetry in door style options including Décor, Palermo, Tuscon, Vienna and Phoenix. Finishes available include matte laquer, maple wood and laminate
- ▶ Selection of chrome, brushed nickel or matte black cabinet hardware
- ▶ Cutlery divider
- ▶ Blind corner pullouts
- ▶ Shallow pantry pullouts
- ▶ Cooktop pullouts
- ▶ Multiple drawer stacks
- ▶ Double waste pullout
- ▶ Soft-close doors and drawers

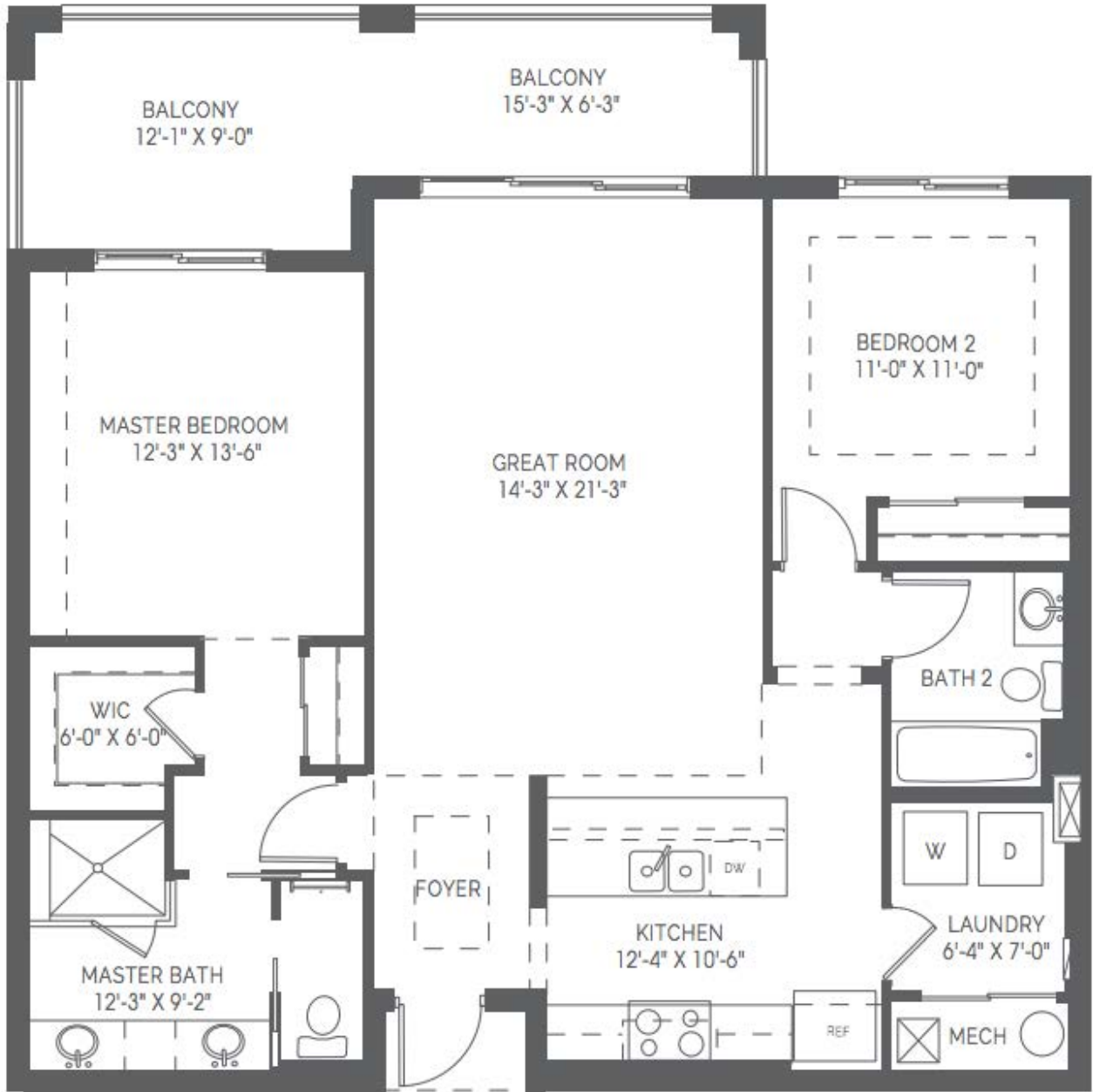


Model Center Open Daily | 1030 3rd Ave South #101

NaplesQuattro.com | 239.228.5800



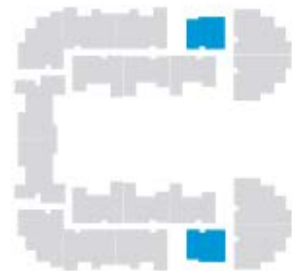
There are various methods for calculating the total square footage of a condominium unit, and depending on the method of calculation, the quoted square footage of a condominium unit may vary by more than a nominal amount. The dimensions stated in this brochure are measured to the exterior boundaries of the exterior walls and the centerline of interior demising walls and, in fact, are larger than the dimensions of the "Unit" as defined in the Declaration of Condominium for WSR Old Naples 4, LLC, which are measured using interior measurements. All dimensions are approximate and all floor plans and development plans subject to change.



Alton

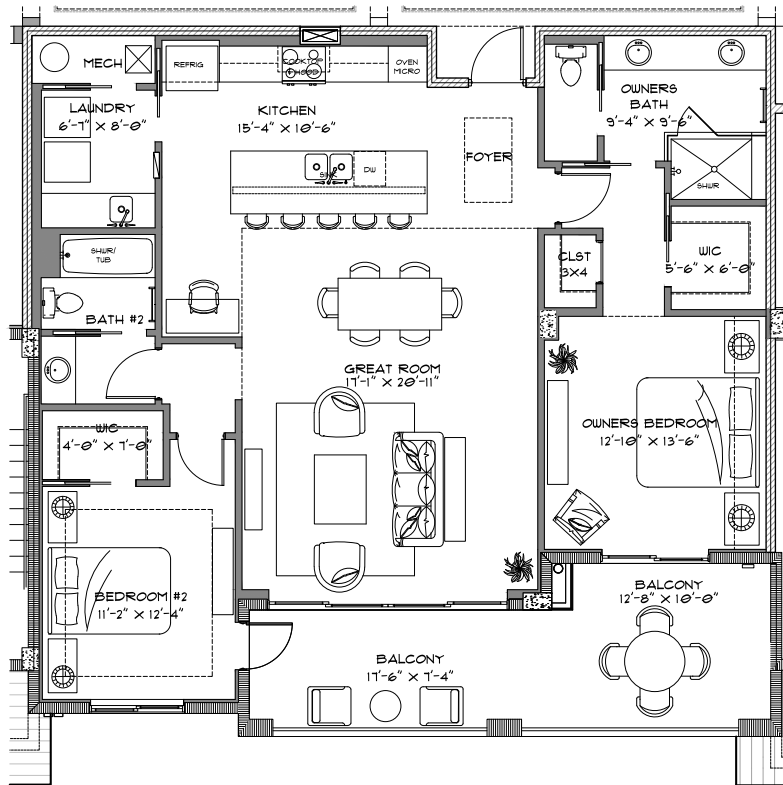
2 Bedroom, 2 Bath

Living	1,268 Sq. Ft.
Balcony	205 Sq. Ft.
<b>Total Living</b>	<b>1,473 Sq. Ft.</b>



N





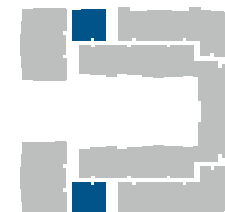
# Astoria

## 2 Bedrooms / 2 Baths

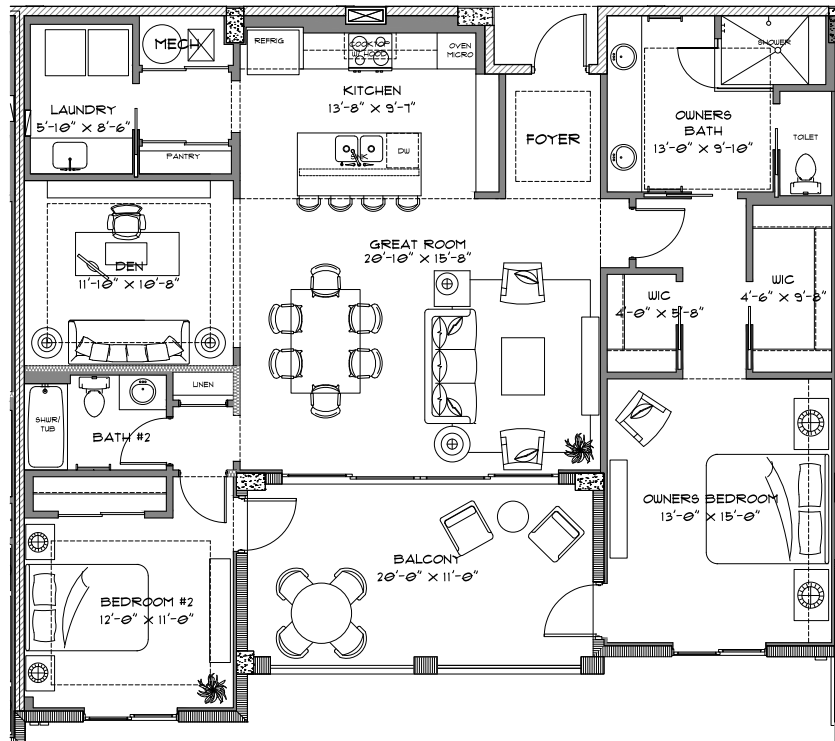
Under air 1,460 sq. ft.  
Balcony 260 sq. ft.

---

Total living area 1,720 sq. ft.



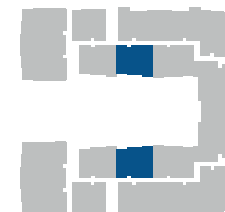


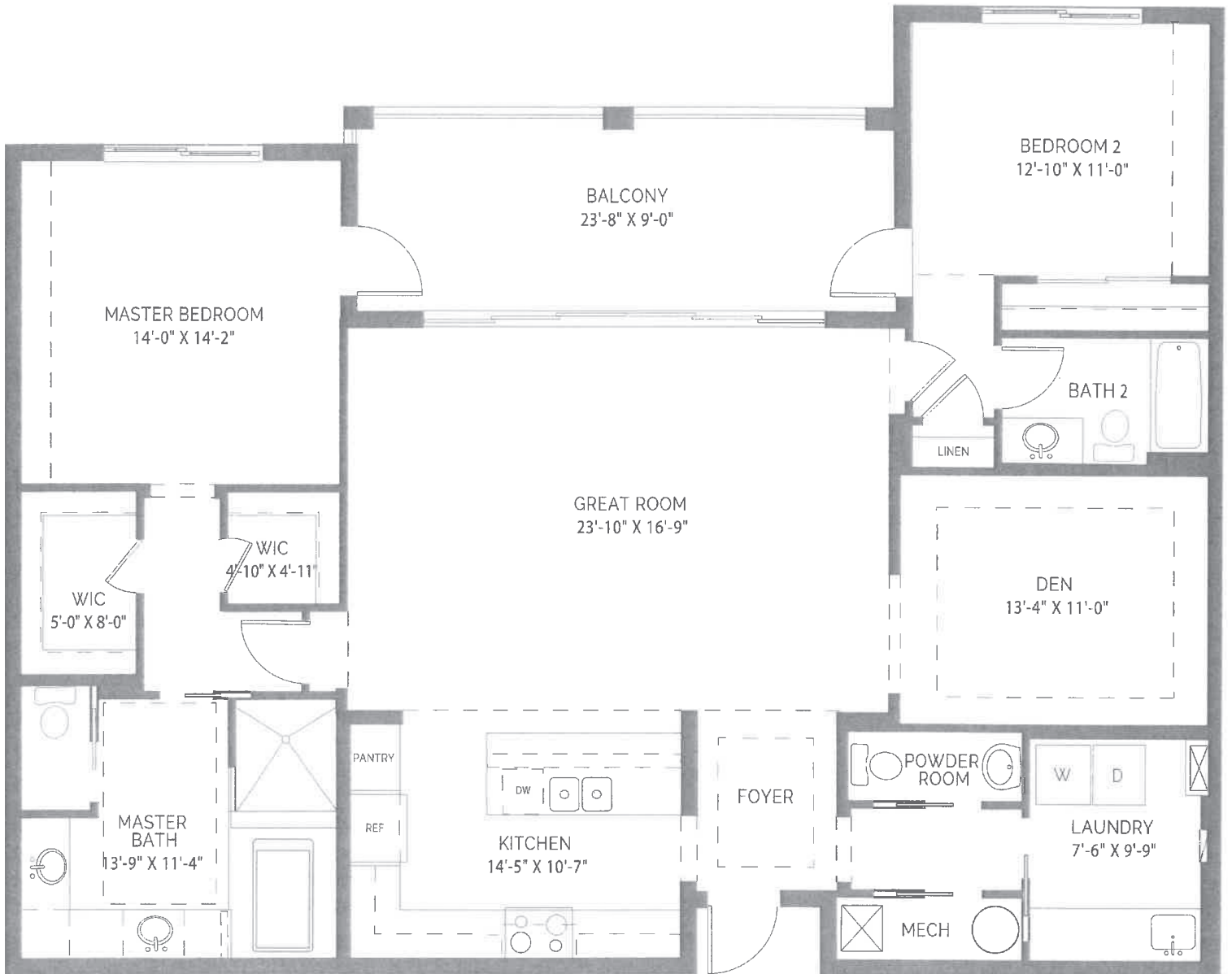


# Barton

## 2 Bedrooms / 2 Baths / Den

Under air	1,593 sq. ft.
Balcony	220 sq. ft.
<hr/>	
Total living area	1,813 sq. ft.

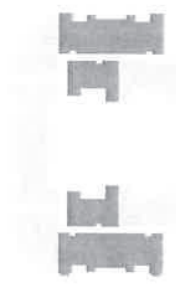




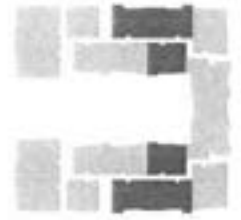
# Chelsea

2 Bedroom, 2.5 Bath, Den

Living	1,832 Sq. Ft.
Balcony	214 Sq. Ft.
Total Living	2,046 Sq. Ft.

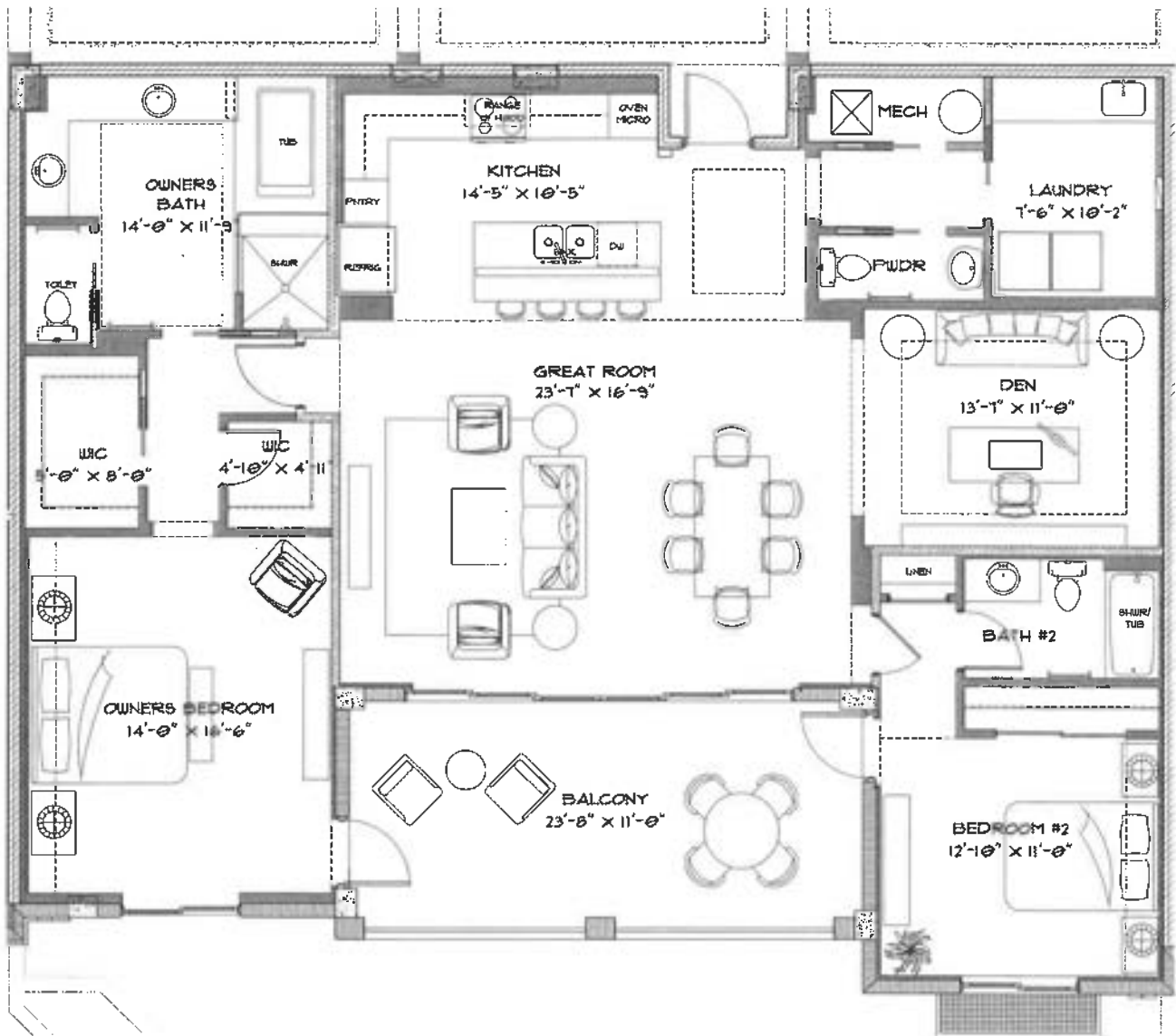


# Chatham



- 2 bedrooms
- 2 ½ baths
- 10' ceilings
- Den
- Great room

Under air	1,883 sq. ft.
Balcony	260 sq. ft.
<b>Total living area</b>	<b>2,143 sq. ft.</b>





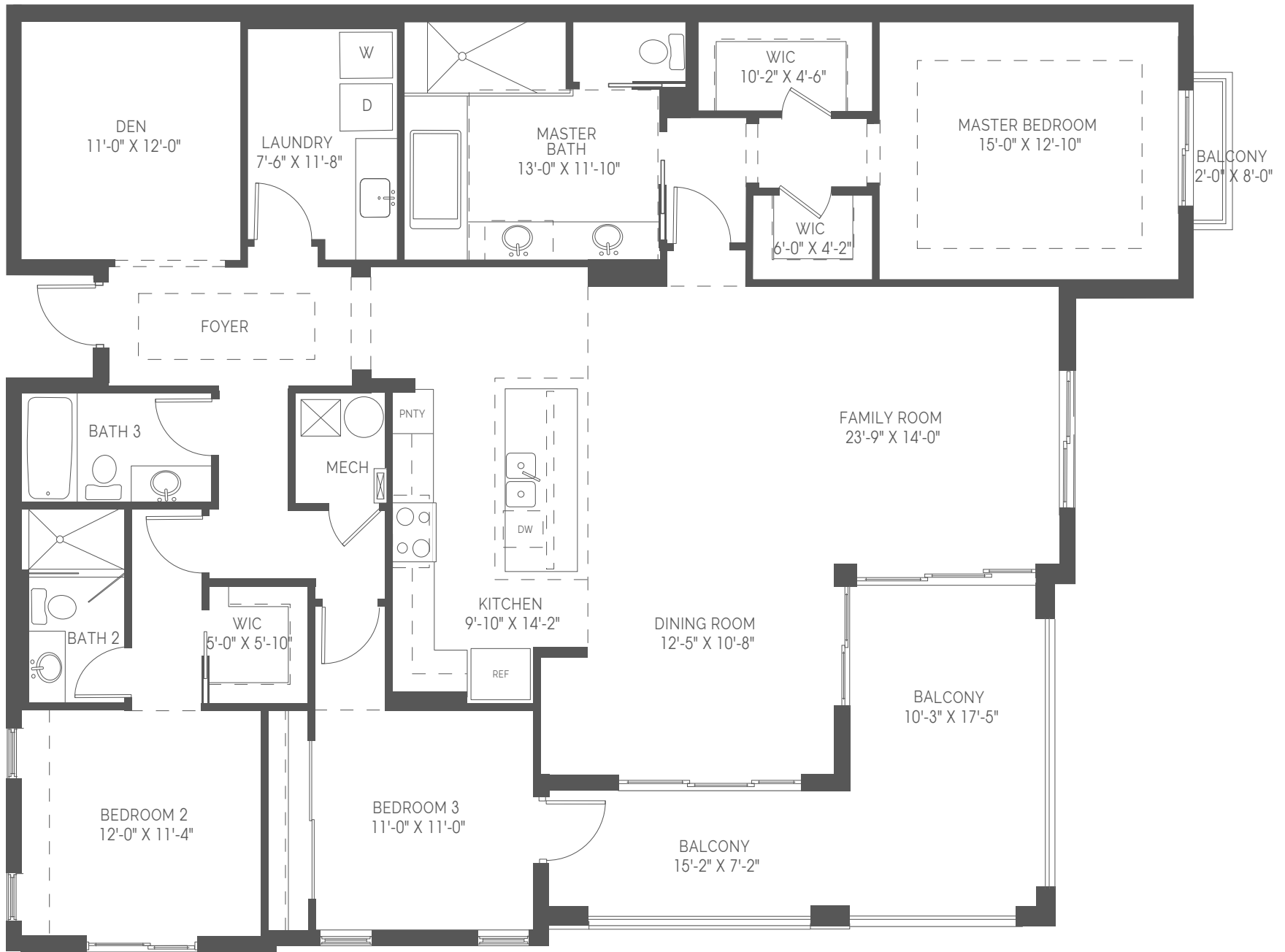


# Dartmouth

3 Bedroom, 3 Bath, Den

Living	2,175 Sq. Ft.
Balcony	226 Sq. Ft.
Total Living	2,401 Sq. Ft.
Private Garage	380 Sq. Ft.
Grand Total	2,781 Sq. Ft.

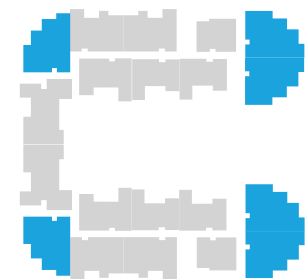




# Denison

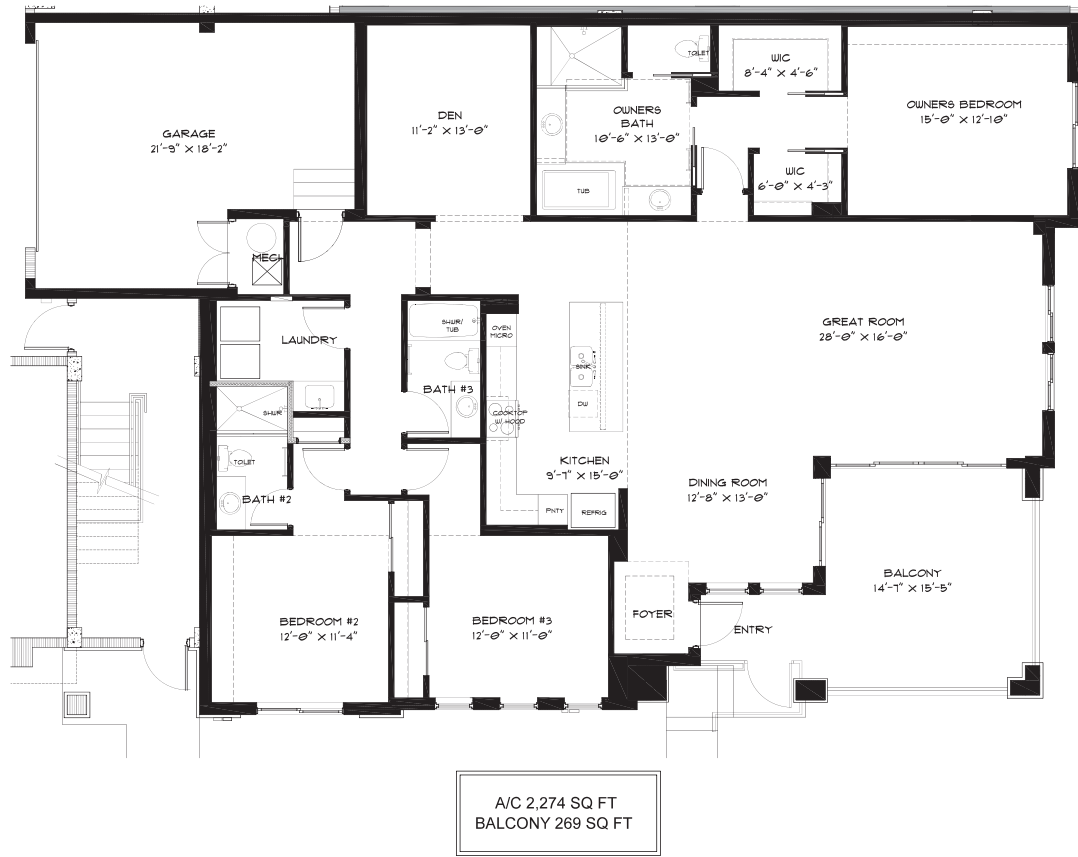
3 Bedroom, 3 Bath, Den

**Living** 2,264 Sq. Ft.  
**Balcony** 290 Sq. Ft.  
**Total Living** 2,554 Sq. Ft.



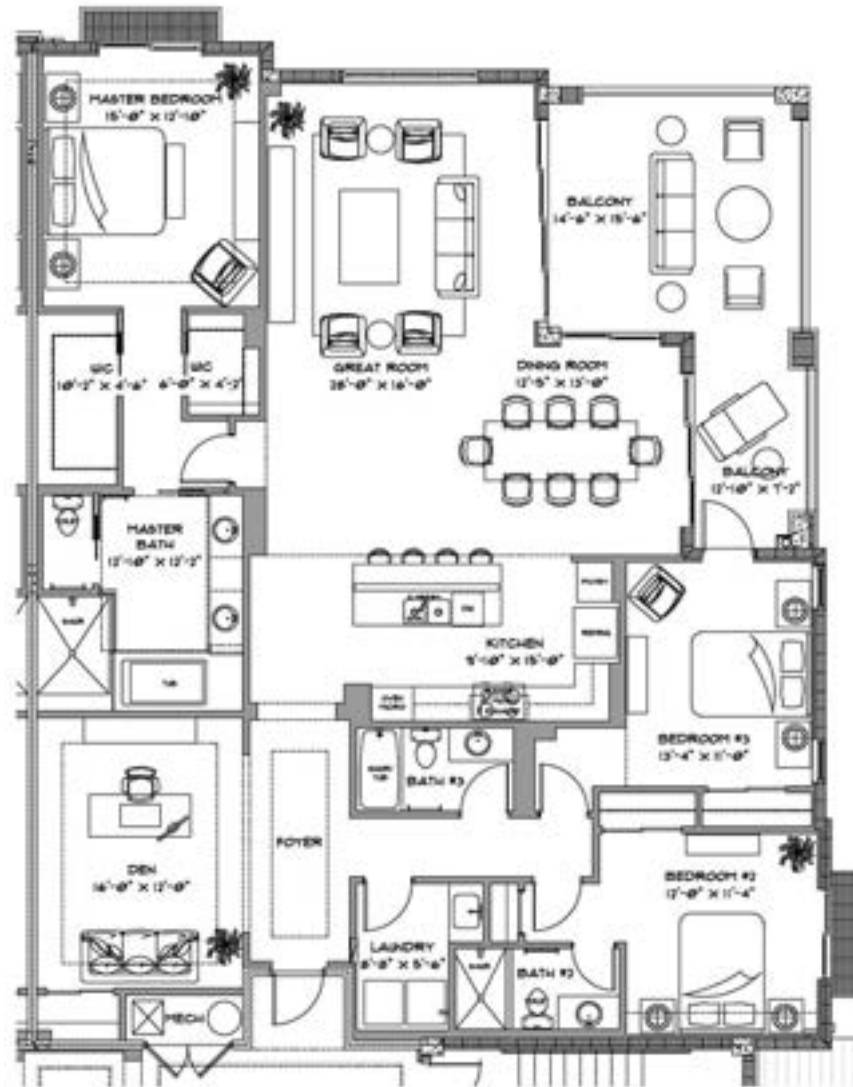
N

THU 10 AUG 2017 10:24:00PM EST - WP/ARCHIBUS/LJAS/DALE NSP - NEW - REVISIONS UNITS FLOOR PLANS.DWG



DORSET 101 FLOOR PLAN  
SCALE: 1/4" = 1'-0"

THE FLOOR, ELECTRIC AND REFLECTED CEILING PLANS  
CONTAIN GENERAL DESCRIPTIONS OF THE LAYOUT AND  
TYPES OF MATERIALS TO BE USED IN FINISHING THE  
CONDOMINIUM. UPON SUBSTANTIAL COMPLETION THE  
CONDOMINIUM MAY HAVE VARIOUS UNIFORMS FROM THE  
CONDOMINIUM. TYPES OF MATERIALS SPECIFICATIONS OR OTHER  
DETAILS SHOWN ON THE PLANS AND THE PROVISIONS OF THE  
PURCHASE AND SALES AGREEMENT PERTAINING TO  
CONSTRUCTION SHALL CONTROL. YOU ARE THEREFORE  
BOARDED TO REPLY ON THE PLANS DRAWING CHECKS FOR  
INTERIOR FINISHES, FURNITURE PLANNING, ETC. AT YOUR RISK.



# Dover

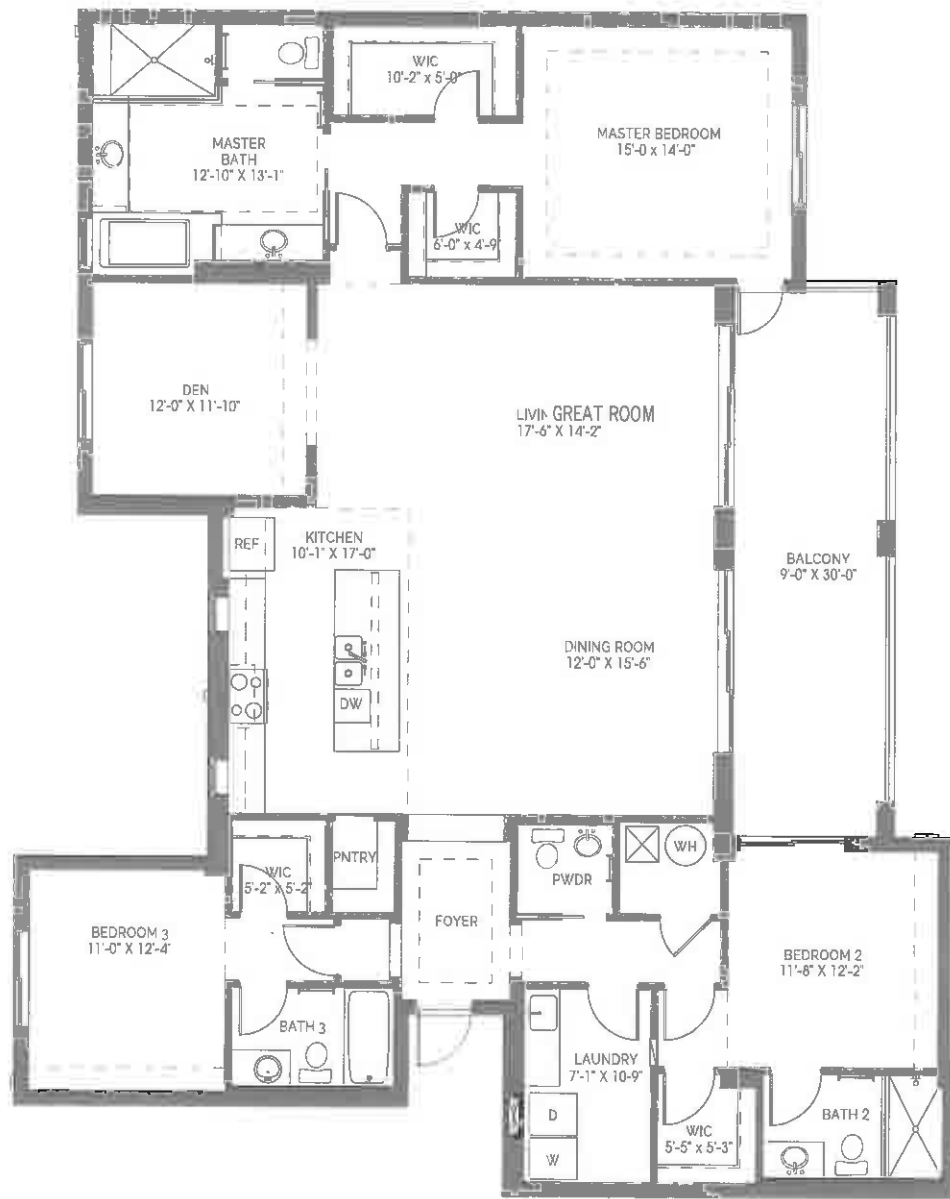
## 3 Bedrooms / 3 Baths

Under air 2,375 sq. ft.  
Balcony 315 sq. ft.

---

Total living area 2,690 sq. ft.





Essex

3 Bedroom, 3.5 Bath, Den

Living 2,469 Sq. Ft.

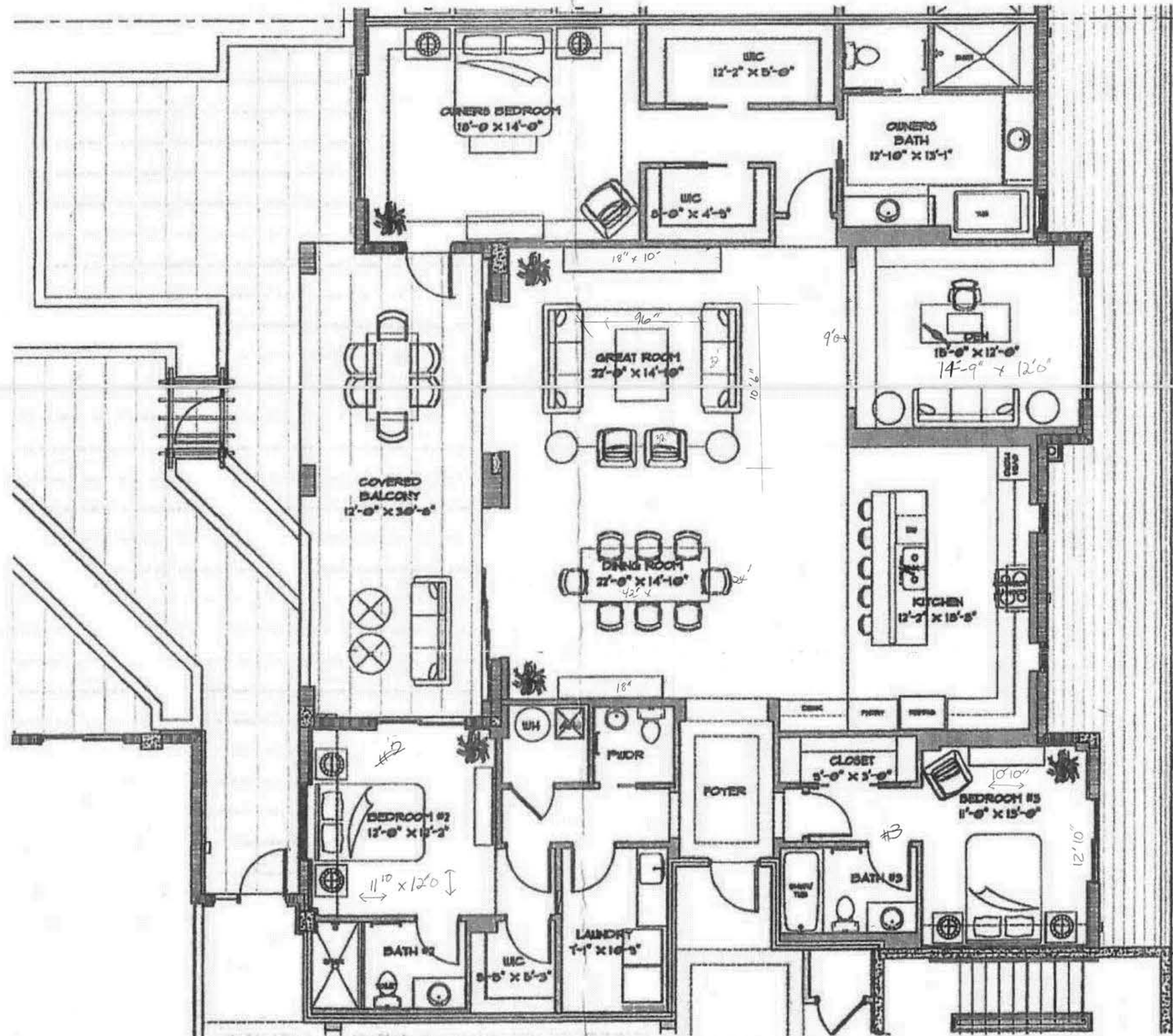
Balcony 277 Sq. Ft.

Total Living 2,746 Sq. Ft.



N





A/C 2,746 SQ FT  
 COVERED BALCONY 366 SQ FT  
 OPEN BALCONY 352 SQ FT

#2 --  
 #3 -- 10' x 12'

EMERSON 20 2ND FLOOR PLAN

SCALE: 1/4" = 1'-0"

EMERSON 10 2ND FLOOR UNIT ARE MIRRORED

THE FLOOR, ELECTRIC AND REFLECTED CEILING PLANS  
 SHOWING GENERAL DESCRIPTIONS OF THE LANDSCAPING  
 TYPES OF FINISHES TO BE USED IN FINISHING THE  
 CONSTRUCTION UPON SUBSTANTIAL COMPLETION, THE  
 SCHEDULED DATE WHICH VARIATIONS FROM THE  
 INDICATED TYPES OF MATERIALS, FINISHES OR METHODS  
 OF WORK SHOWN ON THE PLANS AND THE ARCHITECT'S OF THE  
 PLAN AND OWNER'S AGREEMENT PERTAINING TO  
 "CONSTRUCTION" SHALL CONTROL. YOU ARE HEREBY  
 ADVISED TO OBTAIN PLANS OF APPOINTMENT FOR  
 DESIGN REVIEW, RESUBMITTALS, ETC. AT YOUR RISK.

FILE 11 MAR 2016 4:51:50PM EXTD. 149/140/1401\_1113/1303 102- 102- PRELIMINARY-DWGTS FLOOR PLANNING



# Giada 2

3 BEDROOMS | 3.5 BATHS

GREAT ROOM | DEN | 10' CEILINGS

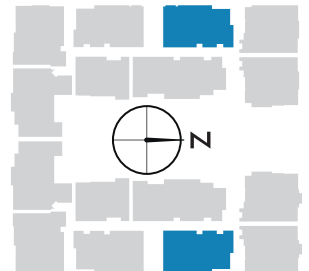


Under Air - 2,748 sq. ft.

Balcony - 304 sq. ft.

Total Living Area

**3,052 sq. ft.**



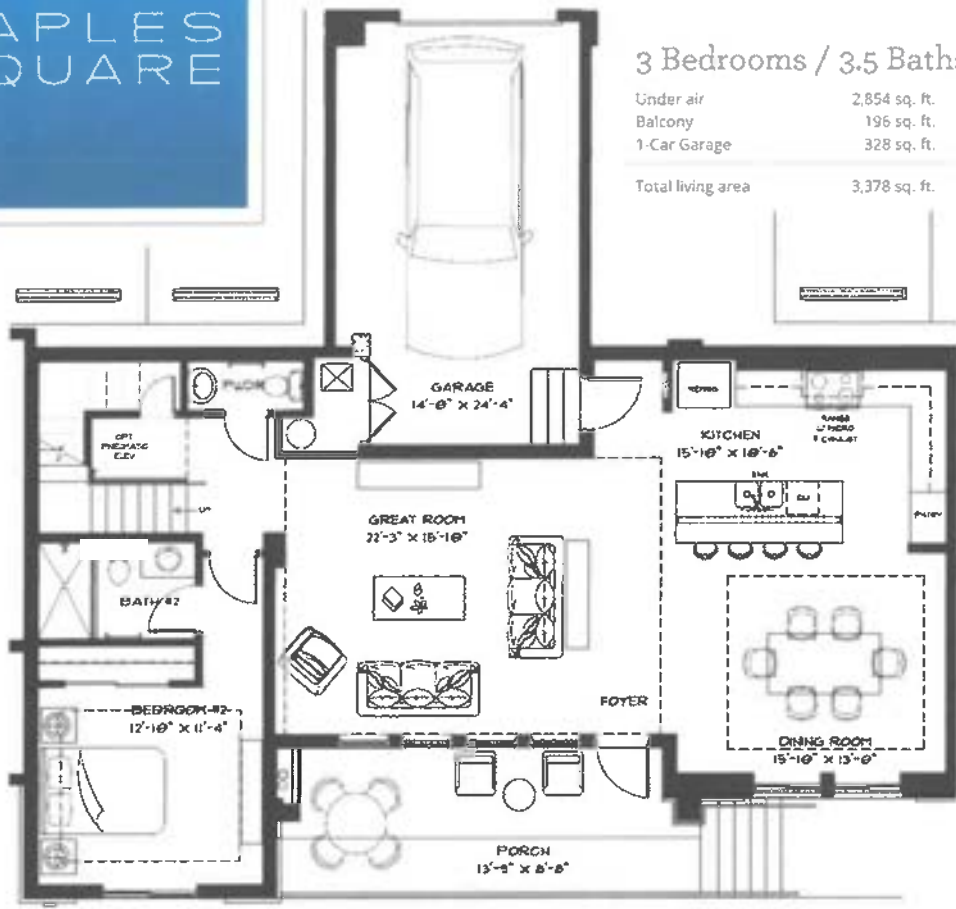
There are various methods for calculating the total square footage of a condominium unit, and depending on the method of calculation, the quoted square footage of a condominium unit may vary by more than a nominal amount. The dimensions stated in this brochure are measured to the exterior boundaries of the exterior walls and the centerline of interior demising walls and, in fact, are larger than the dimensions of the "Unit" as defined in the Declaration of Condominium which is measured using interior measurements.



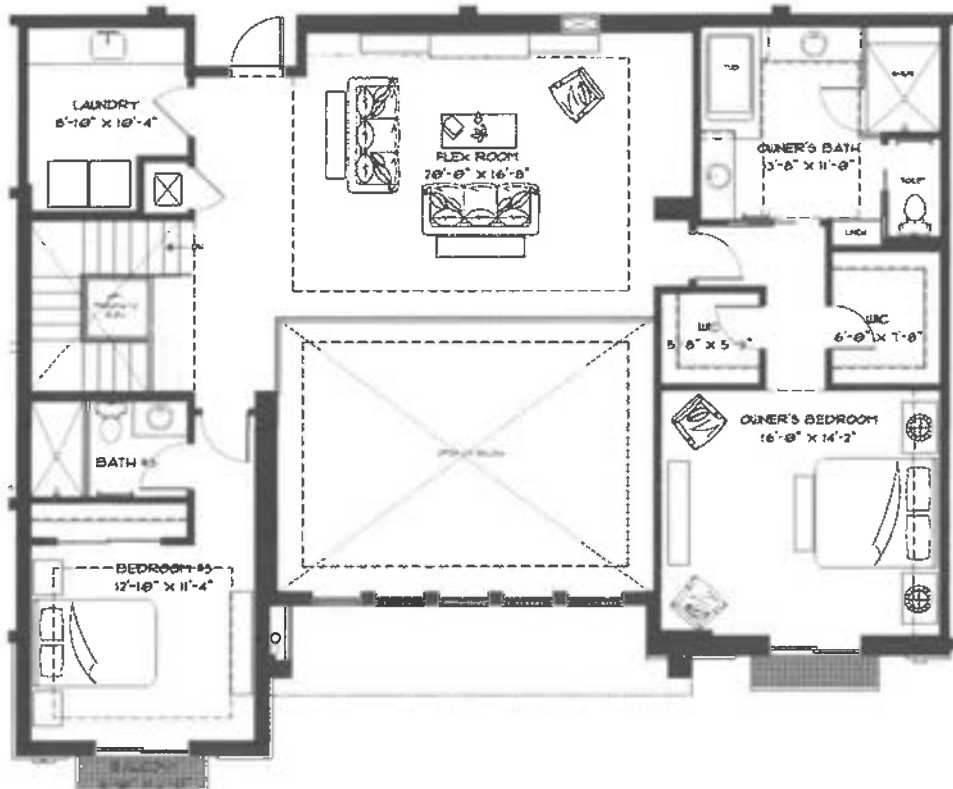
# Franklin II

3 Bedrooms / 3.5 Baths / Den

Under air	2,854 sq. ft.
Balcony	196 sq. ft.
1-Car Garage	328 sq. ft.
<b>Total living area</b>	<b>3,378 sq. ft.</b>

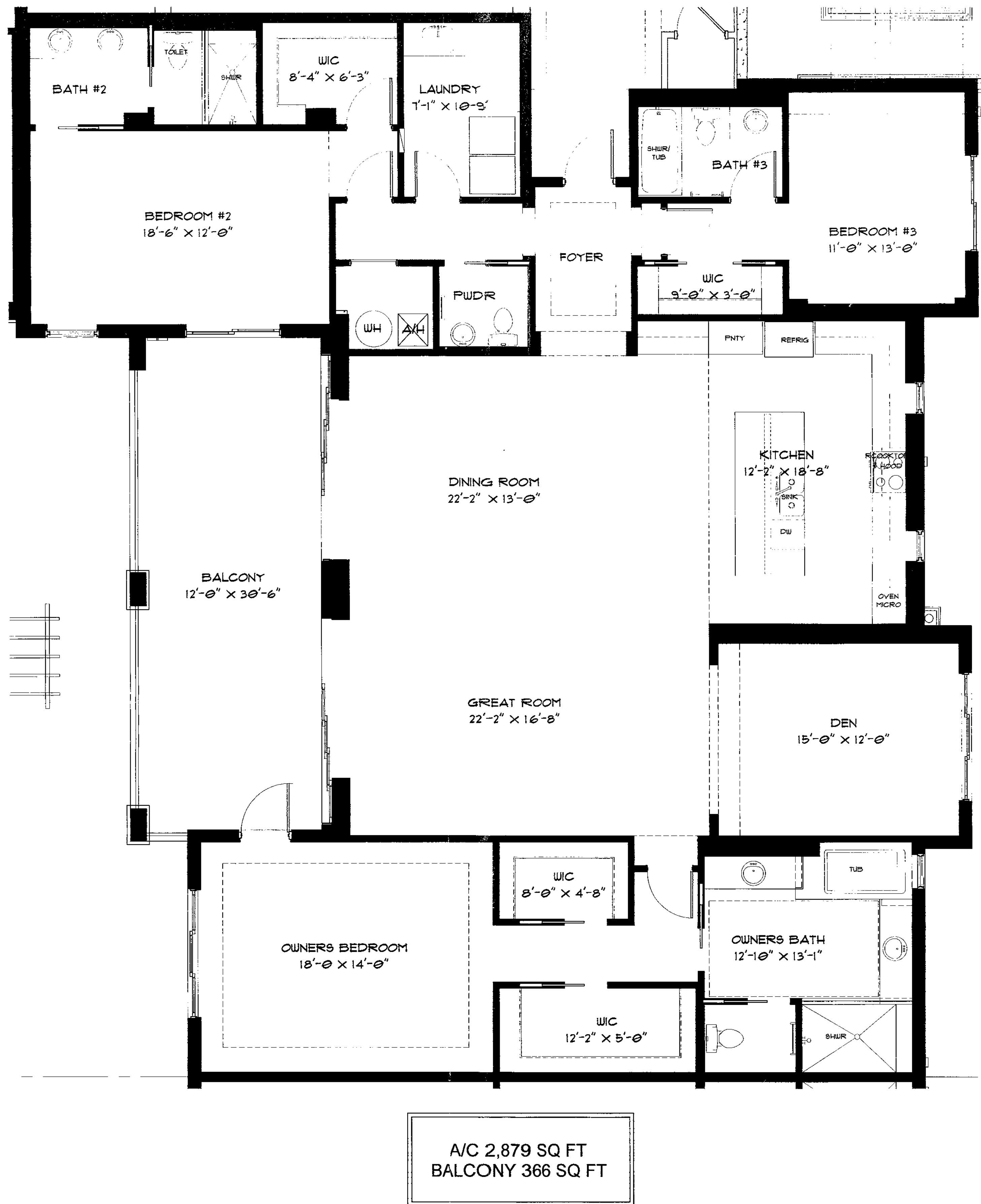


First Floor



Second Floor

MON 06 MAR 2017 <10 21 47AM EST> V:\VOLUME\PROFILES\15163\_NAPLES\_SQUARE\_3\_ARCHITECTURE\DRAWINGS\COPYFILES\0 UNIT PRESENTATION



EMERSON 10 3rd THRU 5th FLOOR PLAN

SCALE 1/4" = 1'-0"

THE FLOOR, ELECTRIC AND REFLECTED CEILING PLANS CONTAIN GENERAL DESCRIPTIONS OF THE UNIT LAYOUT AND TYPES OF MATERIALS TO BE USED IN FINISHING THE CONDOMINIUM UPON SUBSTANTIAL COMPLETION. THE CONDOMINIUM MAY HAVE MINOR VARIATIONS FROM THE DIMENSIONS, TYPES OF MATERIALS, SPECIFICATIONS OR OTHER DETAILS SHOWN ON THE PLANS AND THE PROVISIONS OF THE PURCHASE AND SALES AGREEMENT PERTAINING TO "CONSTRUCTION" SHALL CONTROL. YOU ARE THEREFORE ADVISED TO RELY ON THE PLANS IN MAKING CHOICES FOR INTERIOR FINISHES, FURNITURE PLANNING, ETC AT YOUR RISK.