

Floor Plans

These floor plans have been assembled as a resource for you. They may not be inclusive of every home in the community.

Please note that over time, owners may make modifications to spaces that may not be captured in these original floor plans.

Renderings are not a guarantee of space measurement. Interested parties should verify through their own secured services.



Capri III

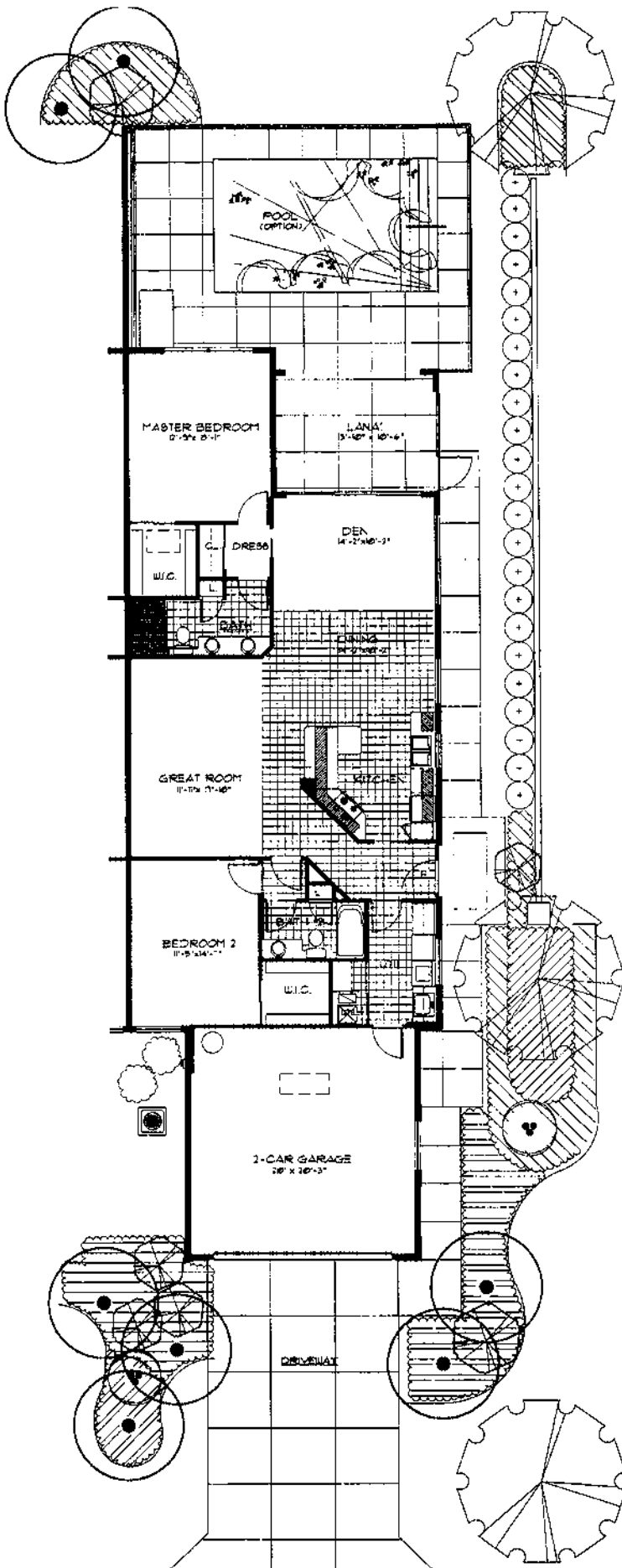
Luxury Patio Home
2 Bedrooms, 2 Baths, Den
2-Car Garage

A/C Living Area	1,520 sq. ft.
Garage	441 sq. ft.
Lanai	147 sq. ft.
Total	2,108 sq. ft.

Preliminary floor plan. All dimensions are approximate to finish of walls. The Developer reserves the right to change and/or alter materials, specifications, features, dimensions, designs, options, colors, finishes, landscaping and prices without notice. No pool, deck, jacuzzi, patio furniture or equipment is provided. Landscape is provided in the front yard only.

© Copyright 2002 DiVosta and Company, Inc. All rights reserved.

Oral representations can not be relied upon as correctly stating the representations of the developer. Refer to the contract and other homeowner documents for correct representations.



Capri III

Luxury Patio Home
2 Bedrooms, 2 Baths, Den
2-Car Garage

A/C Living Area	1,522 sq. ft.
Garage	437 sq. ft.
Lanai	163 sq. ft.
Total	2,122 sq. ft.

Preliminary floor plan. All dimensions are approximate. The Developer reserves the right to change and/or alter materials, specifications, features, dimensions, designs, options, colors, finishes, landscaping and prices without notice. No pool, deck, jacuzzi, patio furniture or equipment is provided. Landscape is provided in the front yard only.

© Copyright 1998 DiVosta & Company, Inc. All rights reserved.

Oral representations can not be relied upon as correctly stating the representations of the developer. Refer to the contract and other homeowner documents for correct representations.



CAPRI III

Luxury Patio Home
2 Bedrooms, Open Den Area,
2 Baths, 2-Car Garage



Artist concept



Enclosed Lanai Option

Residence Area	1,686 sq. ft.
Garage	437 sq. ft.
Total	2,123 sq. ft.

Capri III Square Footage

Residence Area	1,526 sq. ft.
Garage	437 sq. ft.
Lanai	160 sq. ft.
Total	2,123 sq. ft.

*Square footage calculations include the exterior dimensions of the building and may consider the garage well as shared.

Precast concrete construction. Preliminary floor plan. All dimensions are approximate to finish of walls. The Developer reserves the right to change and/or alter materials, specifications, fixtures, dimensions, designs, options, colors, finishes, landscaping and prices without notice. No pool, deck, whirlpool tub, patio furniture or equipment is provided. Oral representations can not be relied upon as correctly stating the representations of the Developer. Refer to the contract and other homeowner documents for correct representations. ©Copyright 2005 Divosta Homes, L.P., a Delaware limited partnership. All rights reserved.

CAPRI III

Luxury Patio Home
2 Bedrooms, Open Den Area,
2 Baths, 2-Car Garage



Artistic concept



Enclosed Lanai Option

Residence Area	1,606 sq. ft.
Garage	437 sq. ft.
Total	2,123 sq. ft.

Capri III Square Footage

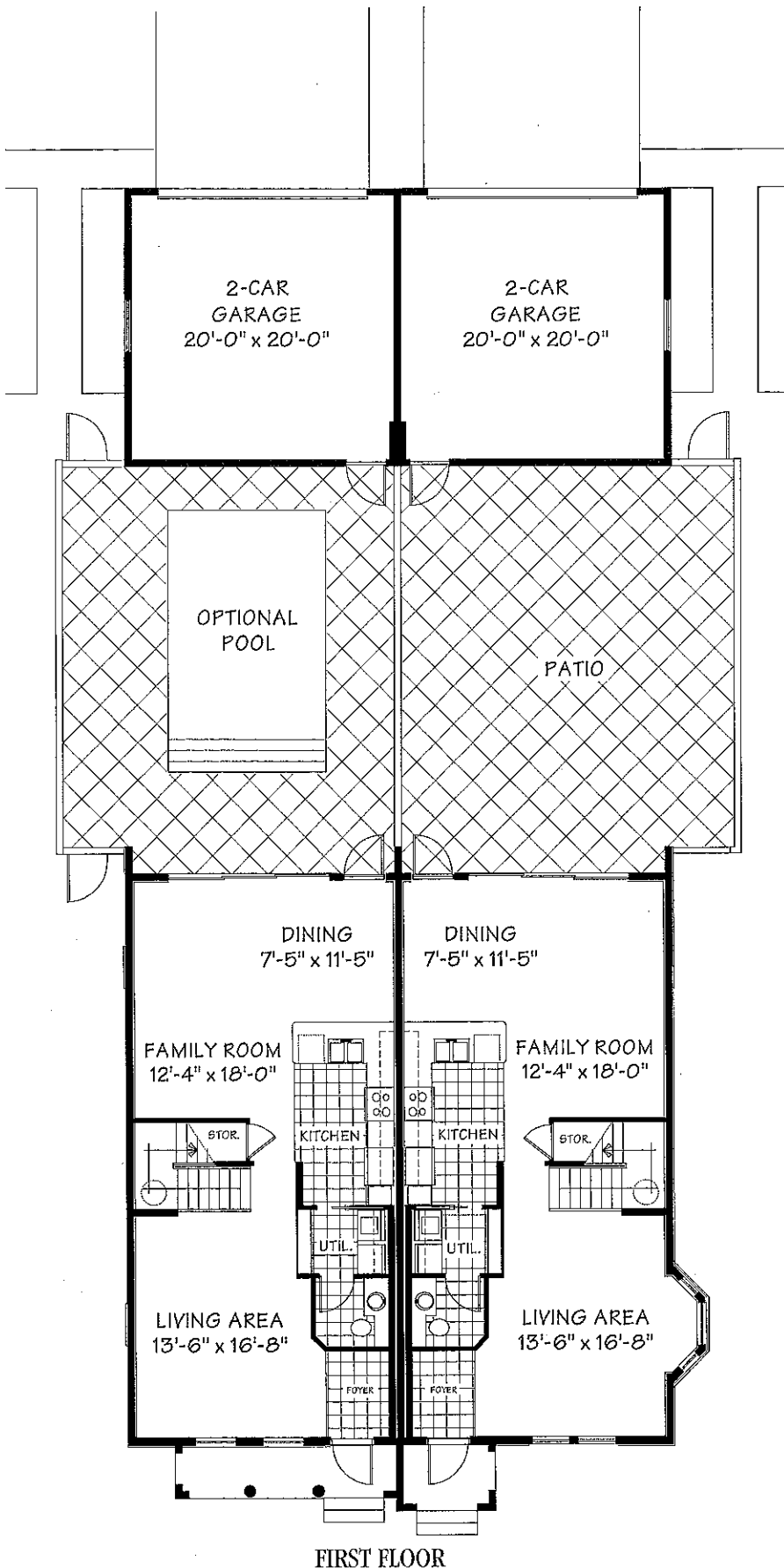
Residence Area	1,526 sq. ft.
Garage	437 sq. ft.
Lanai	160 sq. ft.
Total	2,123 sq. ft.

*Square footage calculations include the exterior dimensions of the building and may consider the garage well as shared.

Poured concrete construction. Preliminary floor plan. All dimensions are approximate to finish of walls. The Developer reserves the right to change and/or alter materials, specifications, fixtures, dimensions, design, options, colors, finishes, landscaping and prices without notice. No pool, deck, whitened tub, patio furniture or equipment is provided. Our representations can not be relied upon as correctly stating the representations of the Developer. Refer to the contract and other homeowner documents for correct representations. ©Copyright 2004 Divosta Homes, L.P., a Delaware limited partnership. All rights reserved.

Aruba

3 Bedrooms, 2½ Baths
2-story, 2-Car Garage

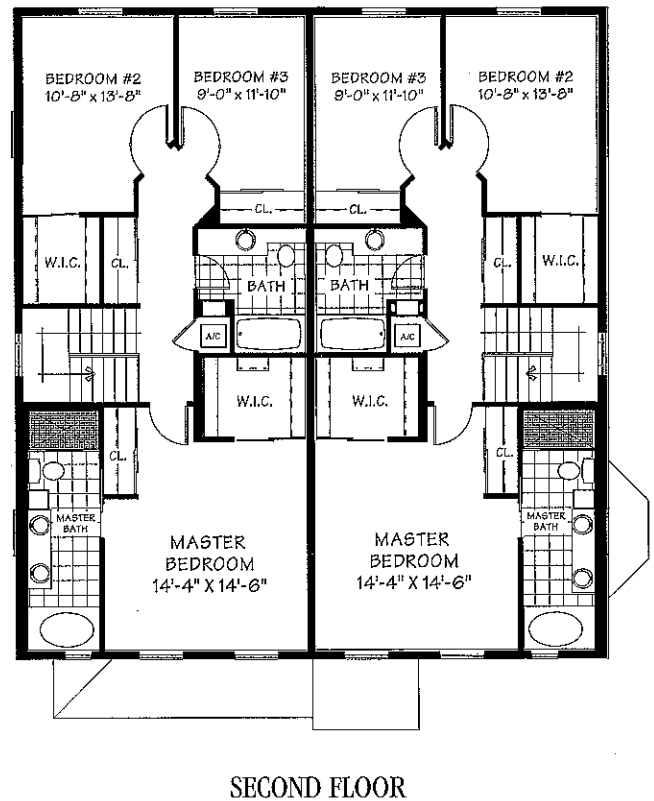


A/C Living Area	1,771 sq. ft.
Garage	435 sq. ft.
Total Square Footage	2,206 sq. ft.

BAY WINDOW SIDE

A/C Living Area	1,786 sq. ft.
Garage	435 sq. ft.
Total Square Footage	2,221 sq. ft.

Preliminary floor plan. All dimensions are approximate. The developer reserves the right to change and/or alter materials, specifications, features, dimensions, designs, landscaping and prices without notice. No pool, deck, jacuzzi, patio furniture or equipment is provided. Landscape is provided in the front yard only.

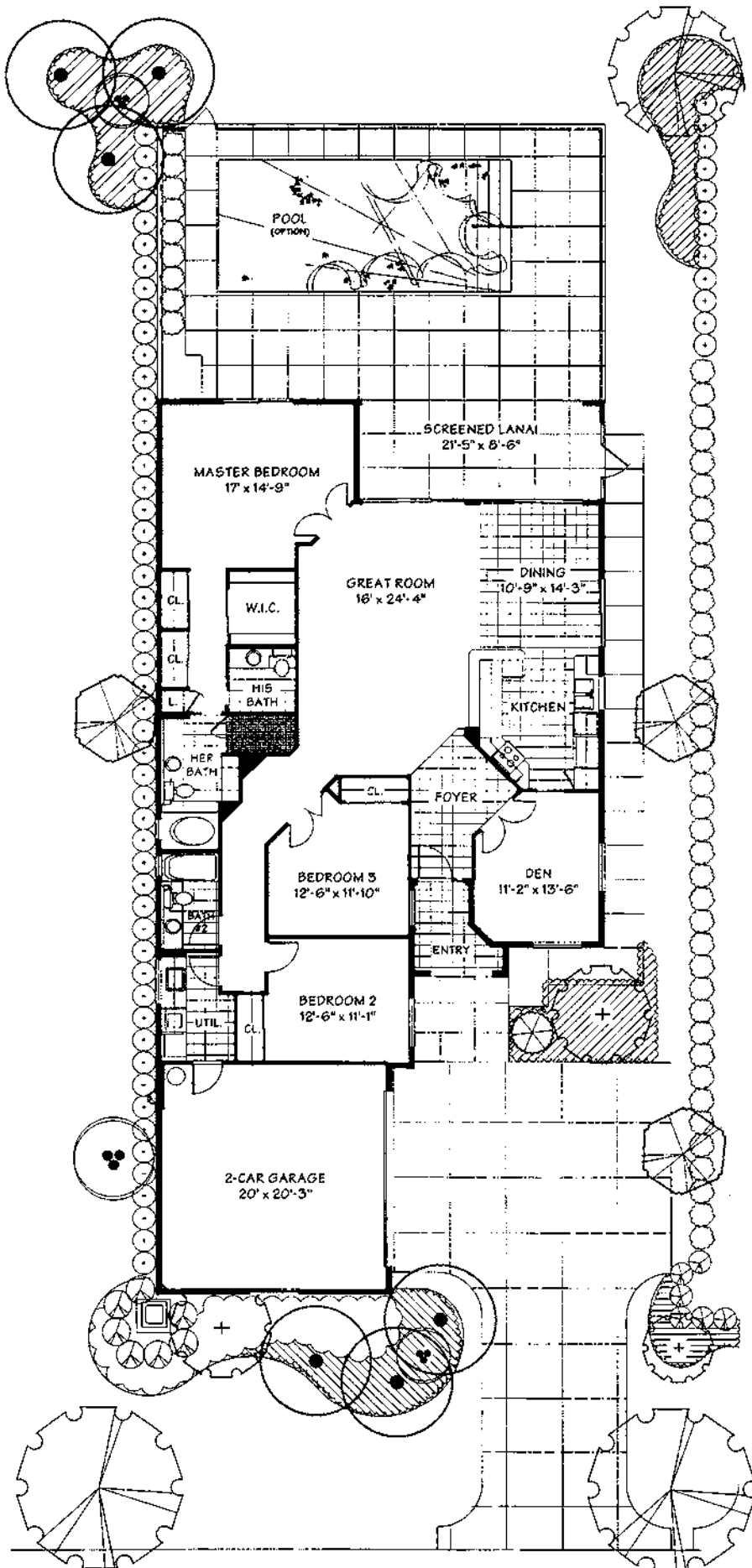




Area:	Sq. Ft.
Living Area	1,800
Screened Lanai	662
Garage	467

Oakmont

Luxury Single-Family Home
 3 Bedrooms, 2 Baths, Den,
 2-Car Garage



A/C Living Area	1,995 sq. ft.
Garage	437 sq. ft.
Lanai	198 sq. ft.
Entry	51 sq. ft.
Total	2,681 sq. ft.

Preliminary floor plan. All dimensions are approximate. The Developer reserves the right to change and/or alter materials, specifications, features, dimensions, designs, options, colors, finishes, landscaping and prices without notice. No pool, deck, jacuzzi, patio furniture or equipment is provided. Landscape is provided in the front yard only.

Oakmont

Luxury Single-Family Home

3 Bedrooms, Den,
2 Baths, 2-Car Garage



Oakmont Square Footage

Residence Area	2,000 sq. ft.
Garage Area	437 sq. ft.
Entry Porch	51 sq. ft.
Lanai	198 sq. ft.
Total	2,686 sq. ft.



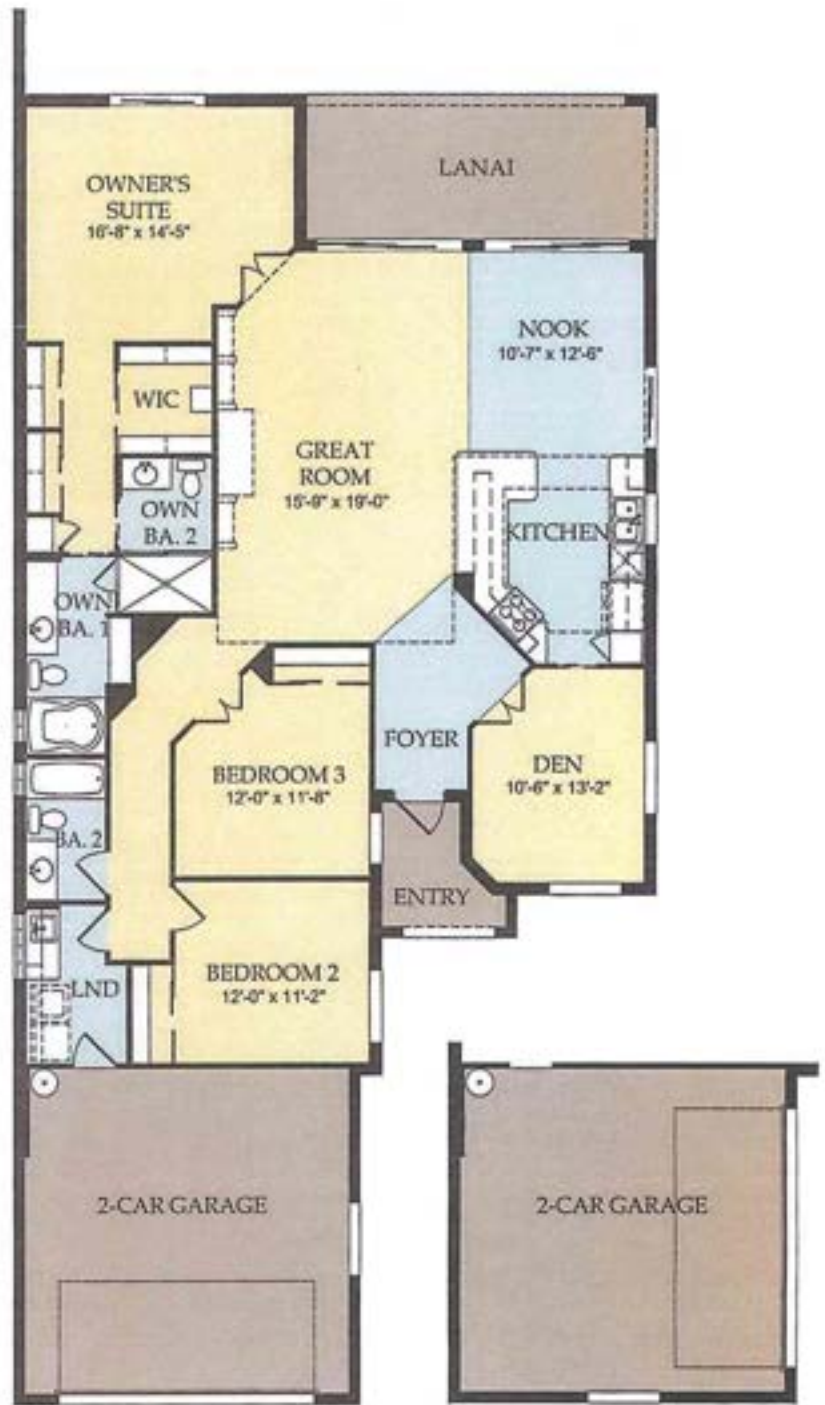
D'Vosta Homes, L.P., the seller of the property, has contracted with D'Vosta Building Corporation (CB-C017129) to build the homes. Artist's renderings are conceptual only. Exact dimensions and spatial arrangements on this plan are approximate and may vary in final construction.



Oakmont

Luxury Single-Family Home

3 Bedrooms, Den,
2 Baths, 2-Car Garage



Oakmont Square Footage

Residence Area	2,003 sq. ft.
Garage Area	450 sq. ft.
Entry Porch	52 sq. ft.
Lanai	195 sq. ft.
Total	2,700 sq. ft.

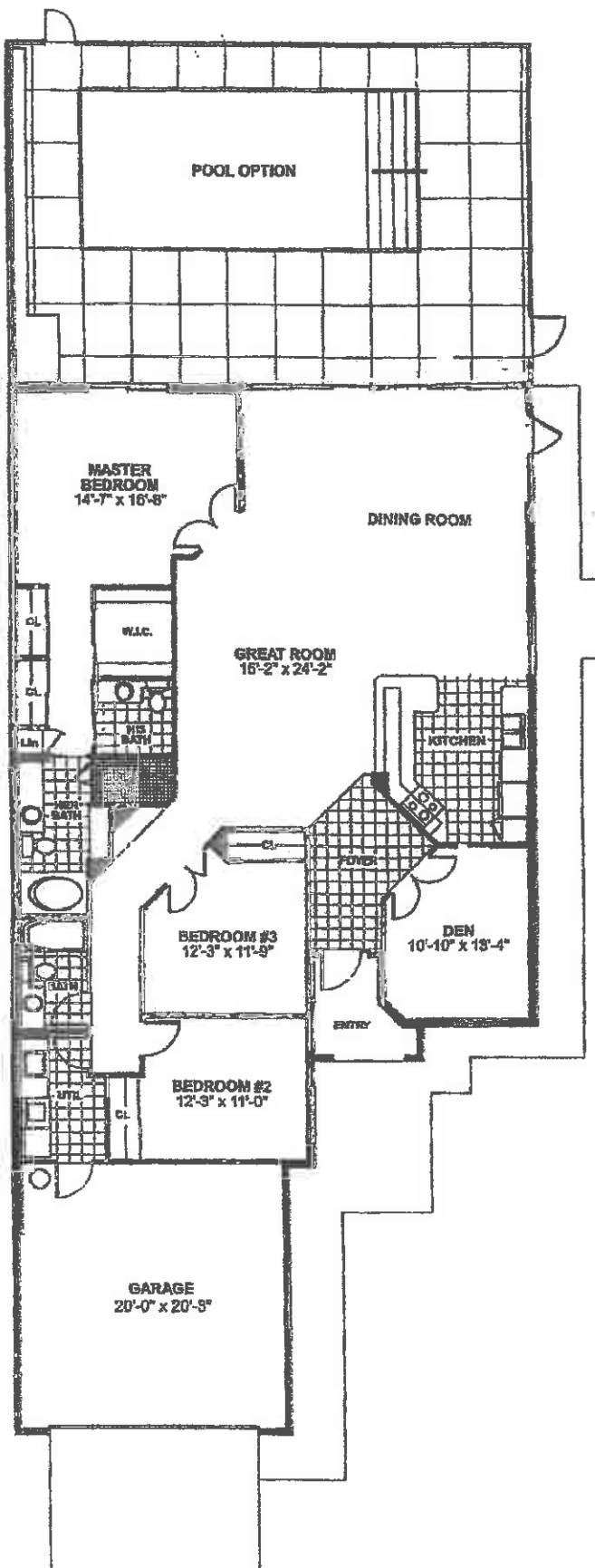
Side Load Garage Option

Artist's renderings are conceptual only. Exact dimensions and spatial arrangements on this plan are approximate and may vary in final construction.



Oakmont

Luxury Single-Family Home 3 Bedrooms, 2 Baths, Den 2-Car Garage



Residence Area	2,181 sq. ft.
Garage	440 sq. ft.
Lanai	197 sq. ft.
Entry	51 sq. ft.
Total	2,678 sq. ft.

Preliminary floor plan. All dimensions are approximate to finish of walls. The Developer reserves the right to change and/or alter materials, specifications, features, dimensions, designs, options, colors, finishes, landscaping and prices without notice. No pool, deck, jacuzzi, patio furniture or equipment is provided. Landscape is provided in the front yard only.

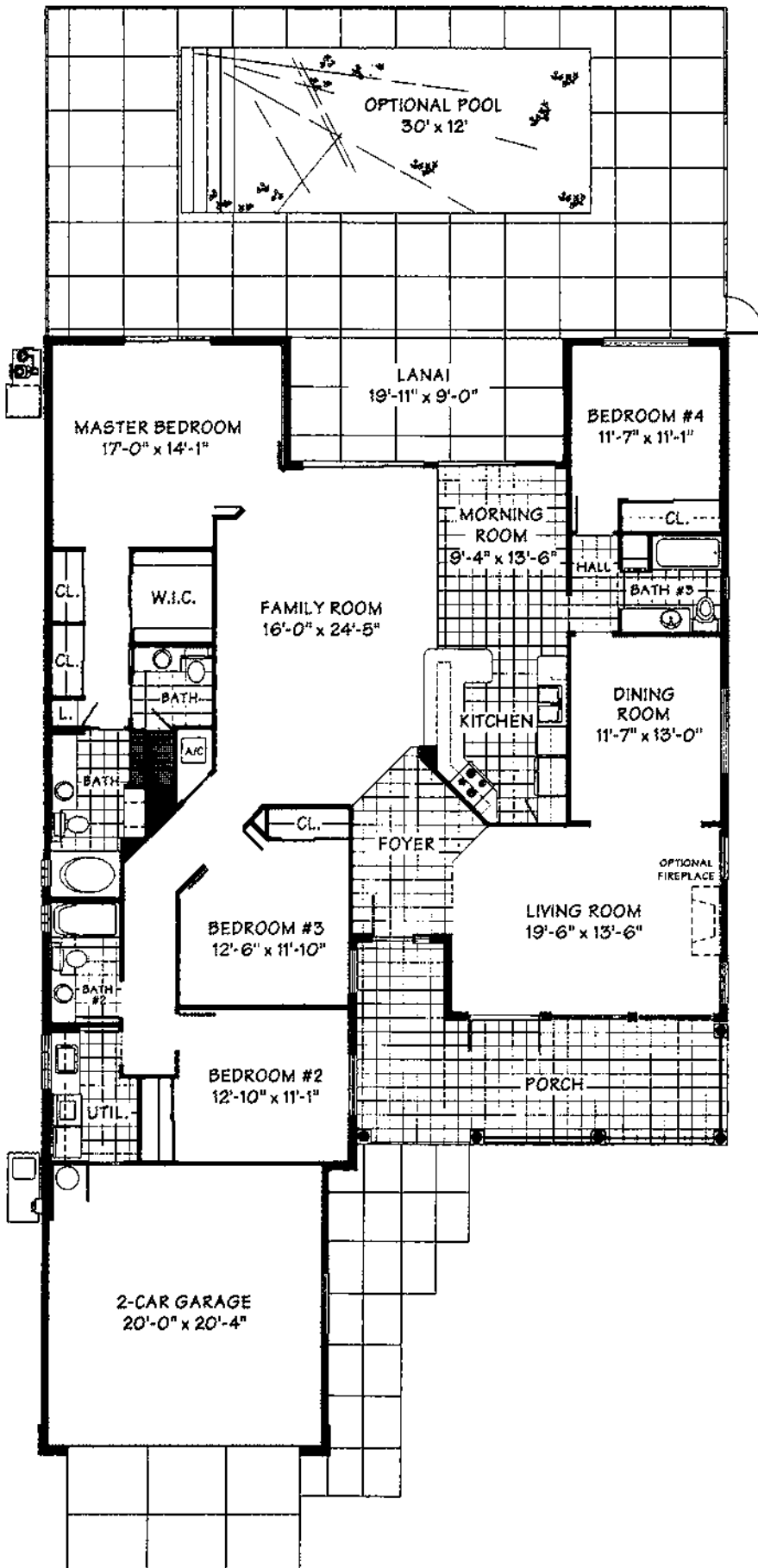
© Copyright 2004 DiVosta Homes, L.P., a Delaware limited partnership. All rights reserved.

Oral representations can not be relied upon as correctly stating the representations of the developer. Refer to the contract and other homeowner documents for correct representations.

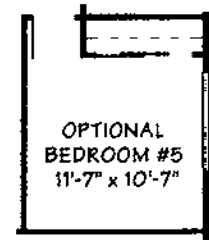
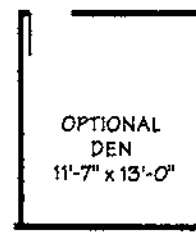
VWB #1141 (Rev. 4/04)

Carlyle

Luxury Single-Family Home
4 Bedrooms, 3 Baths,
2-Car Garage



A/C Living Area	2,507 sq. ft.
Garage	437 sq. ft.
Entry Porch	252 sq. ft.
Lanai	180 sq. ft.
Total	3,376 sq. ft.



Preliminary floor plan. All dimensions are approximate. The Developer reserves the right to change and/or alter materials, specifications, features, dimensions, designs, options, colors, finishes, landscaping and prices without notice. No pool, deck, jacuzzi, patio furniture or equipment is provided. Landscape is provided in the front yard only.

Carlyle

Luxury Single-Family

4 Bedrooms, 3 Baths,

2-Car Garage



Carlyle Square Footage

Residence Area	2,506 sq. ft.
Garage Area	437 sq. ft.
Entry Porch	276 sq. ft.
Lanai	180 sq. ft.
Total	3,399 sq. ft.



Divosta Homes, LP, the seller of the property, has contracted with Divosta Building Corporation (CB-C017129) to build the homes. Artist's renderings are conceptual only. Exact dimensions and spatial arrangements on this plan are approximate and may vary in final construction.



THE PLUTE HOMES FAMILY™