

Floor Plans

These floor plans have been assembled as a resource for you. They may not be inclusive of every home in the community.

Please note that over time, owners may make modifications to spaces that may not be captured in these original floor plans.

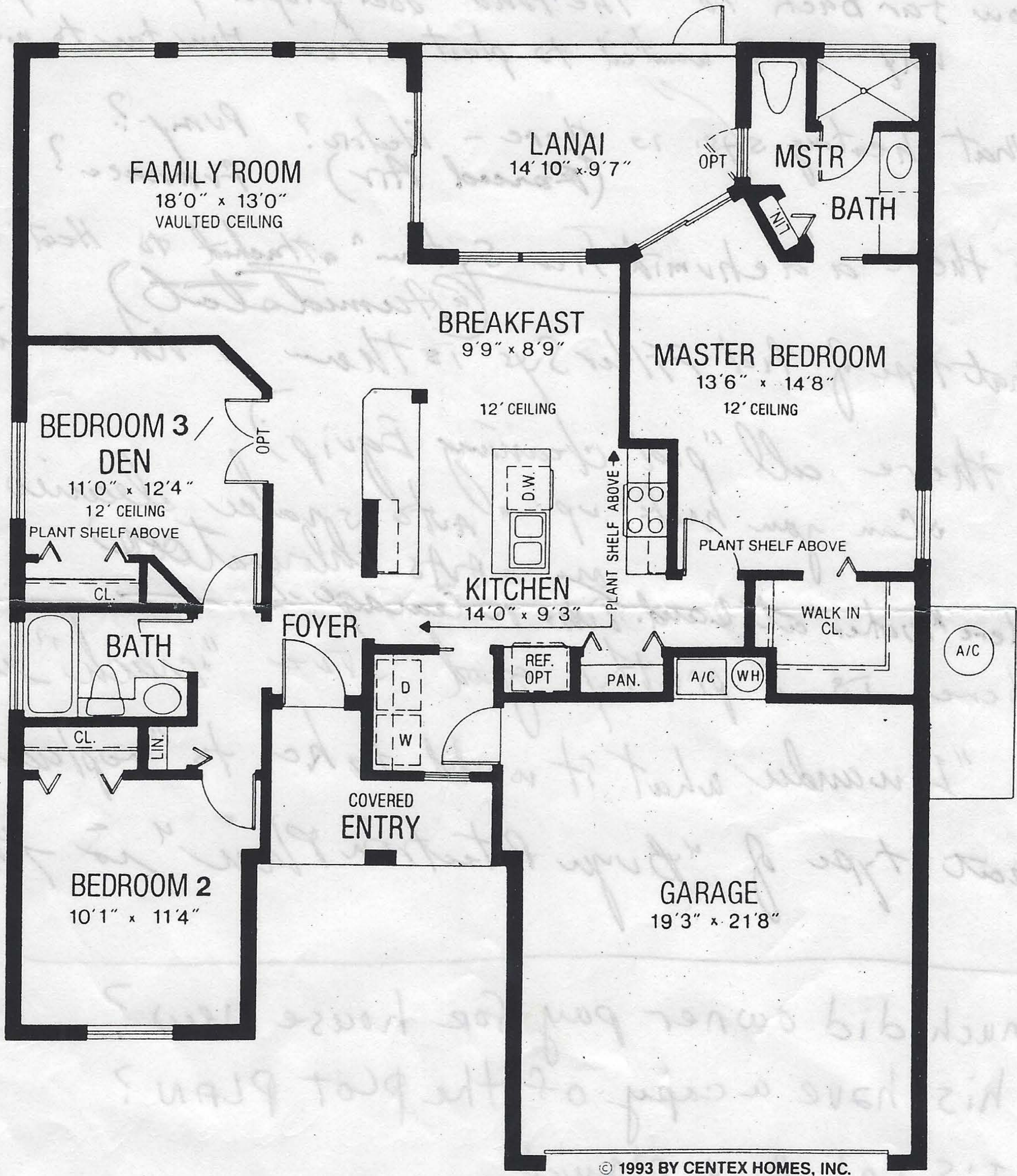
Renderings are not a guarantee of space measurement. Interested parties should verify through their own secured services.

SITE MAP



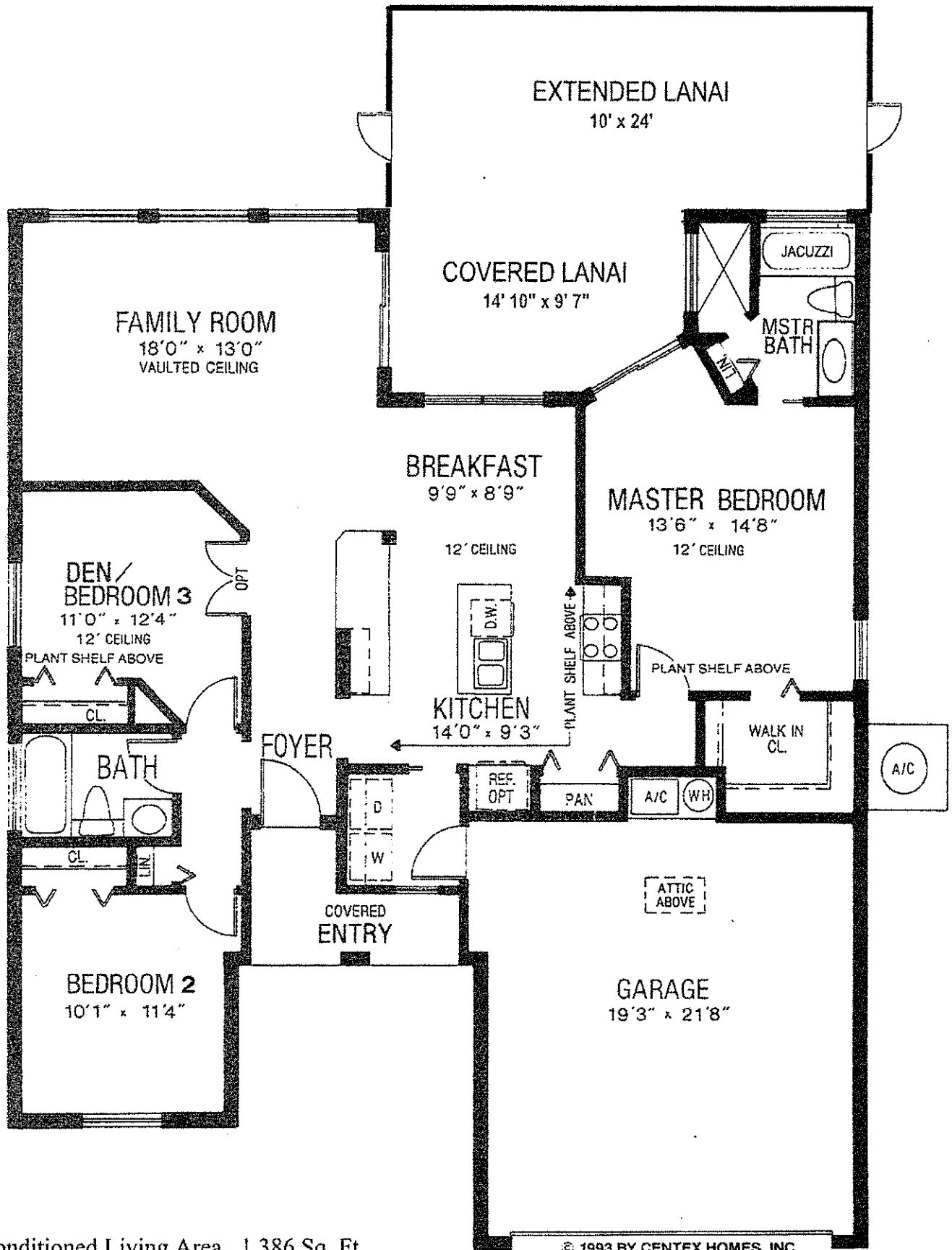
ORAL REPRESENTATIONS CANNOT BE RELIED UPON AS CORRECTLY STATING REPRESENTATIONS OF THE DEVELOPER. FOR CORRECT REPRESENTATIONS, MAKE REFERENCE TO THIS BROCHURE AND TO THE DOCUMENTS REQUIRED BY SECTION 718.503, FLORIDA STATUTES, TO BE FURNISHED BY A DEVELOPER TO A BUYER OR LESSEE.

DANFORTH



**Floor Plan For
"A" & "B"
Elevations**

*All plans, dimensions and information are approximate and are subject to change without notice.
Developer reserves the right to modify site plan, amenities and future product.*

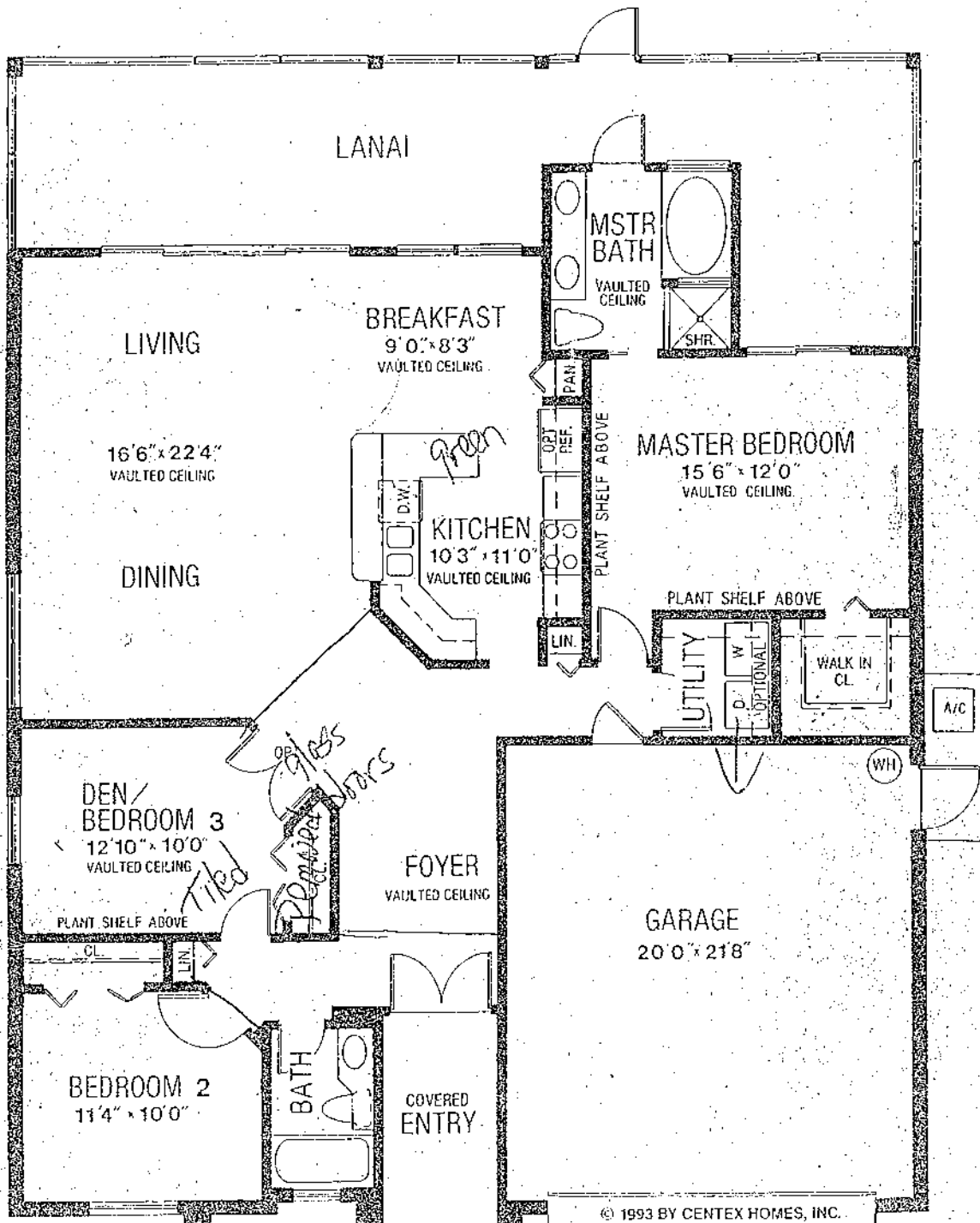


Air Conditioned Living Area 1,386 Sq. Ft.
 Total Square Footage 2,260 Sq. Ft.

© 1993 BY CENTEX HOMES, INC.

Dimensions and information are approximate

ASHWOOD



© 1993 BY CENTEX HOMES, INC.

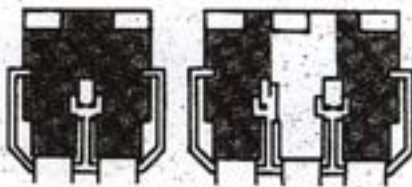
Air Conditioned Living Area 1,530 Sq. Ft.
Total Square Footage 2,371 Sq. Ft.

All plans, dimensions and information are approximate and are subject to change without notice.
Developer reserves the right to modify site plan, amenities and future product.

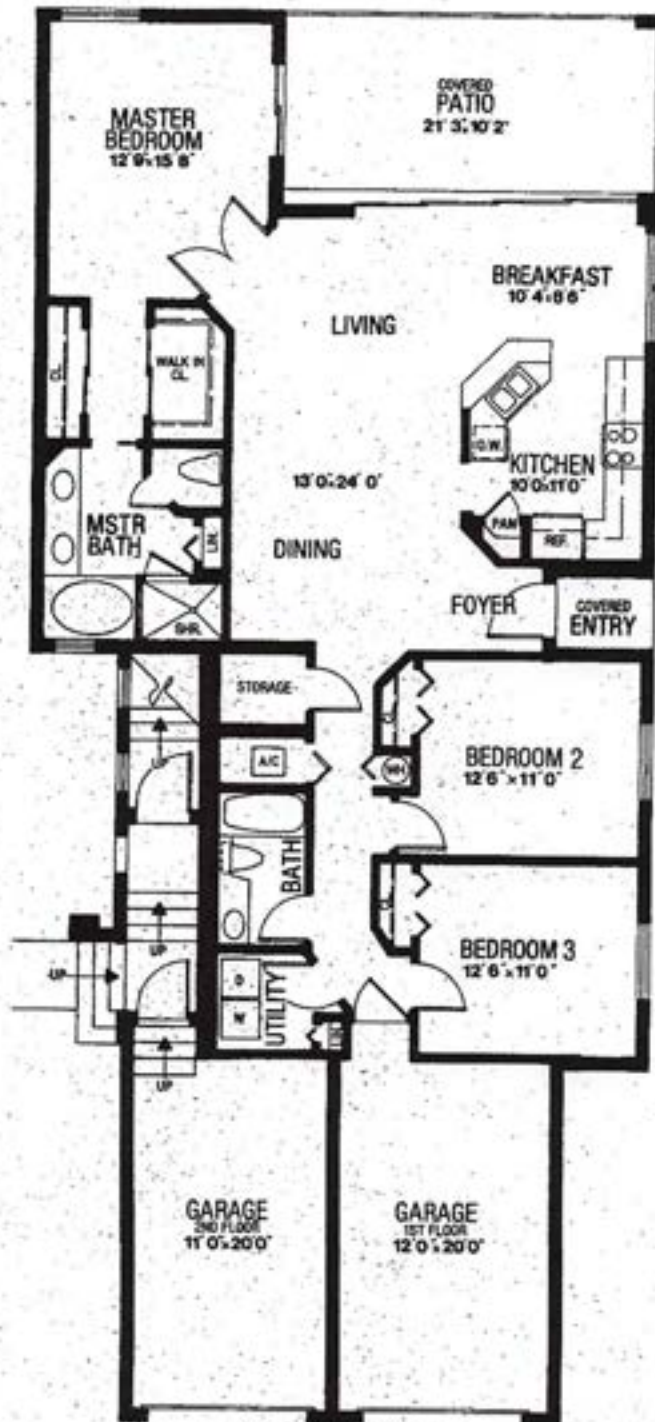
COCOPLUM

3 Bedrooms, 2 Baths, Breakfast Room, Garage

Total Living Area 1,823 Sq. Ft.
 Air Conditioned Living Area 1,607 Sq. Ft.
 Total Square Footage 2,112 Sq. Ft.



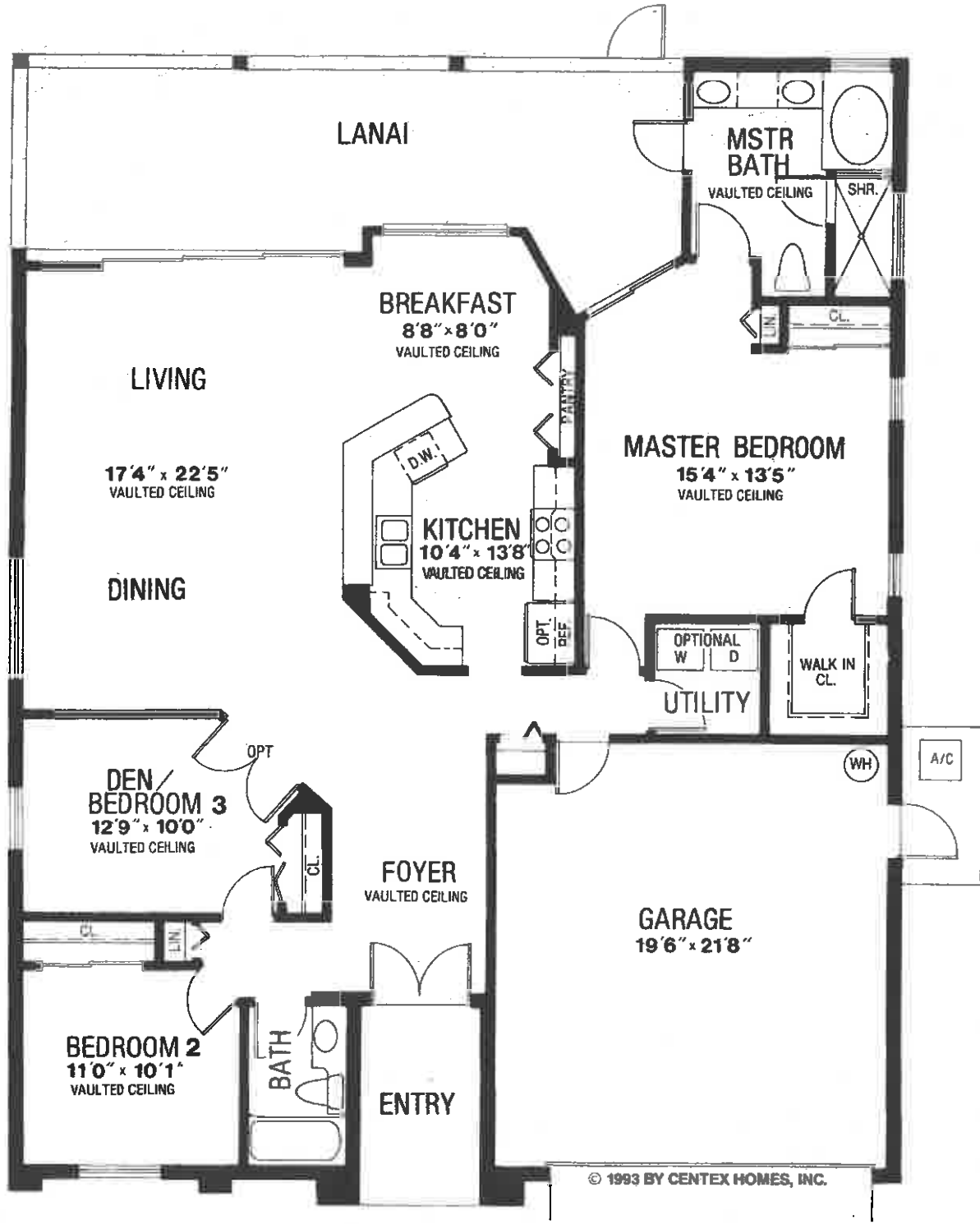
1st floor



© 1993 BY CENTEX HOMES, INC.

All plans, dimensions, and information are approximate and are subject to change without notice.
 Developer reserves the right to modify site plan, amenities and future product.

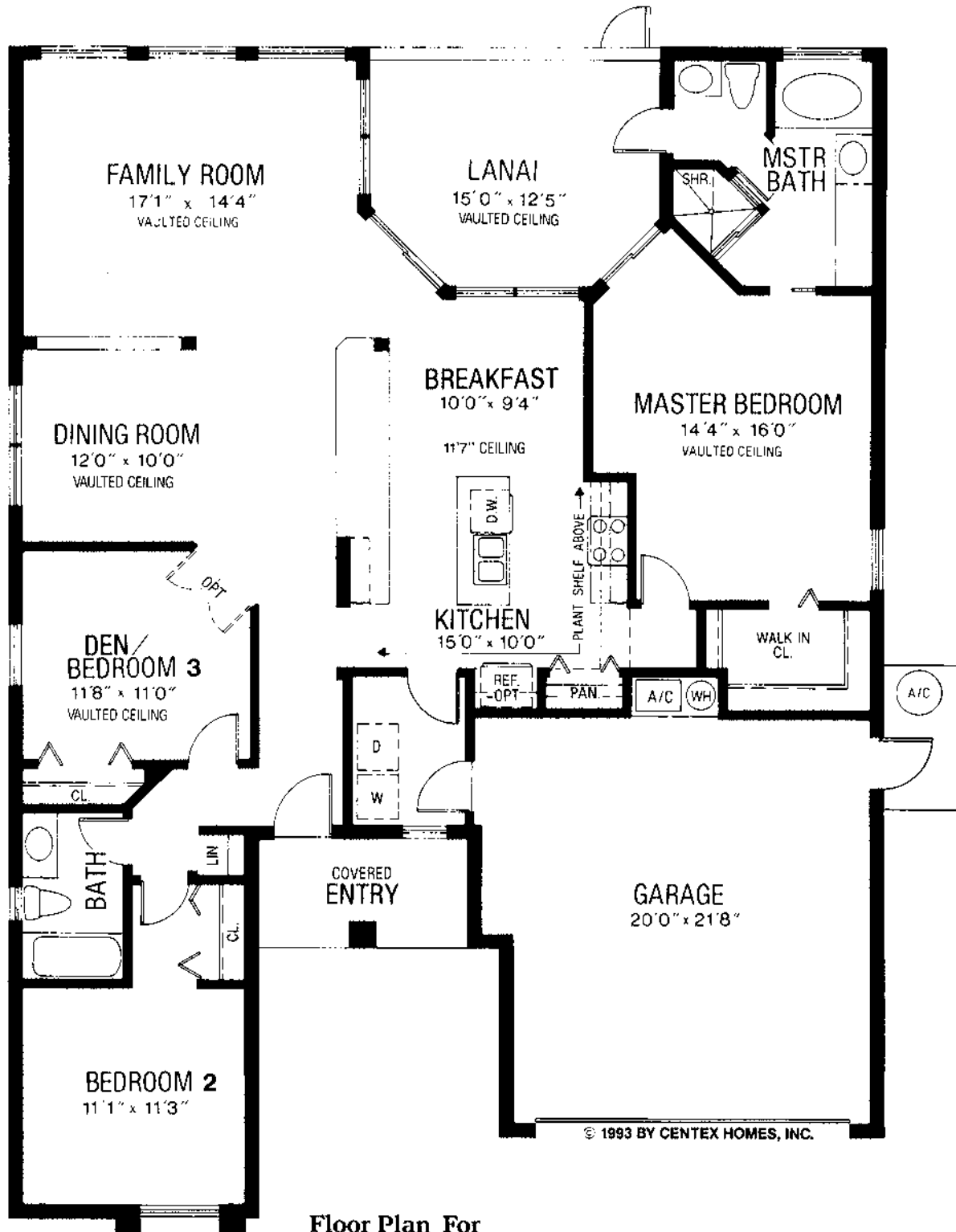
SUMTER



Air Conditioned Living Area 1,704 Sq. Ft.
 Total Square Footage 2,558 Sq. Ft.

Floor Plan For
 "A" & "B"
 Elevations

All plans, dimensions and information are approximate and are subject to change without notice.
 Developer reserves the right to modify site plan, amenities and future product.



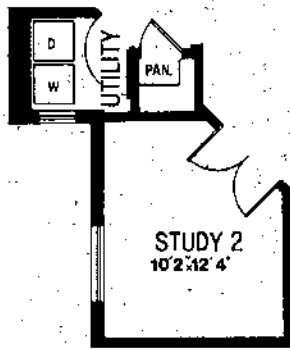
Floor Plan For
"D" & "E"
Elevations

Air Conditioned Living Area 1,765 Sq. Ft.
Total Square Footage 2,456 Sq. Ft.

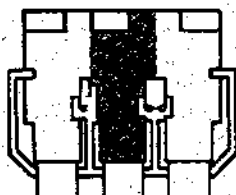
PALMETTO

4 Bedrooms, 2 Baths, Breakfast Room, Garage

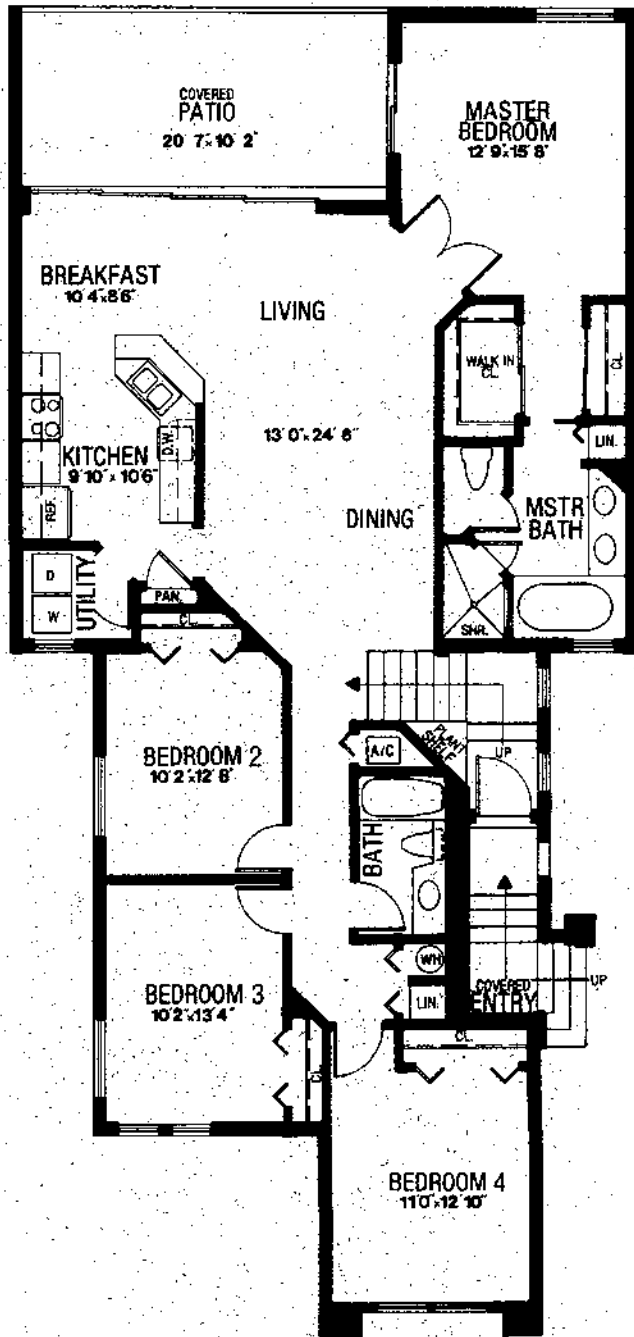
Total Living Area 2,009 Sq. Ft.
 Air Conditioned Living Area 1,800 Sq. Ft.
 Total Square Footage 2,285 Sq. Ft.



ALTERNATE A



2nd floor



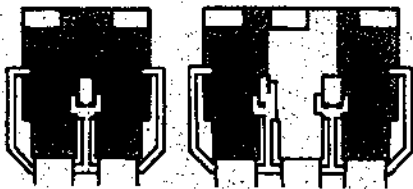
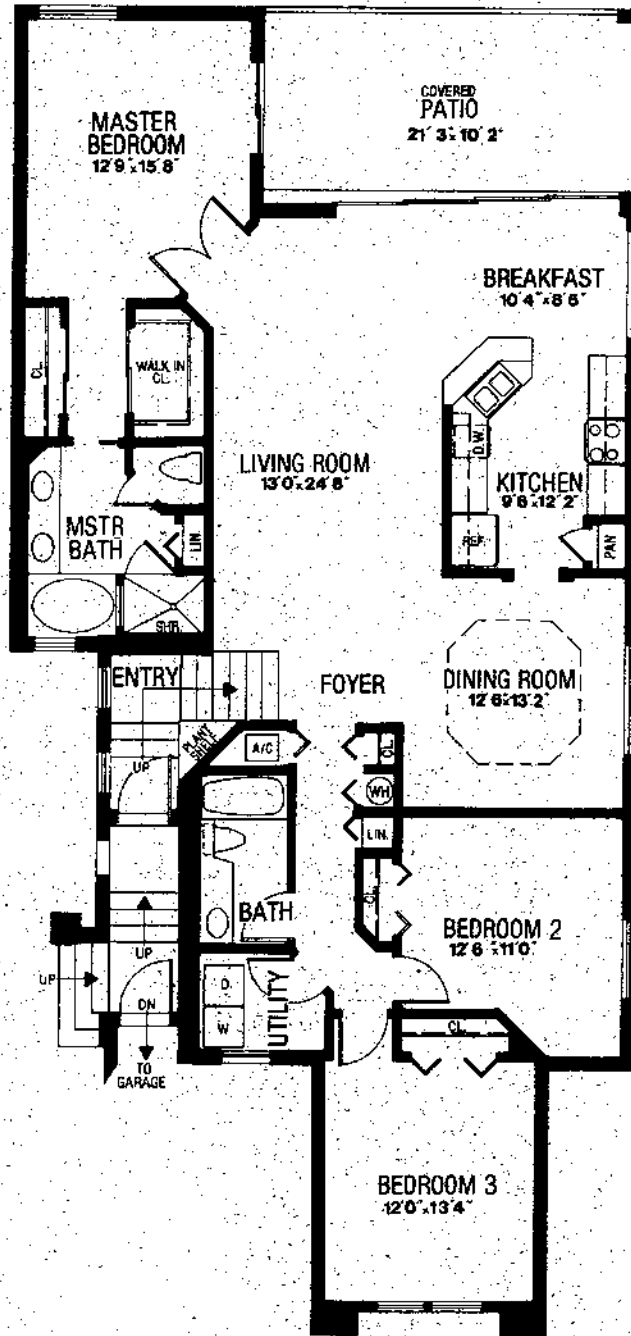
© 1993 BY CENTEX HOMES, INC.

All plans, dimensions, and information are approximate and are subject to change without notice.
 Developer reserves the right to modify site plan, amenities and future product.

ALLAMANDA

3 Bedrooms, 2 Baths, Dining Room, Garage

Total Living Area 2,083 Sq. Ft.
 Air Conditioned Living Area 1,867 Sq. Ft.
 Total Square Footage 2,352 Sq. Ft.



2nd floor

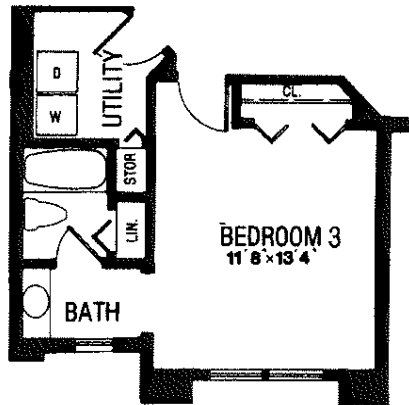
© 1993 BY CENTEX HOMES, INC.

All plans, dimensions, and information are approximate and are subject to change without notice.
 Developer reserves the right to modify site plan, amenities and future product.

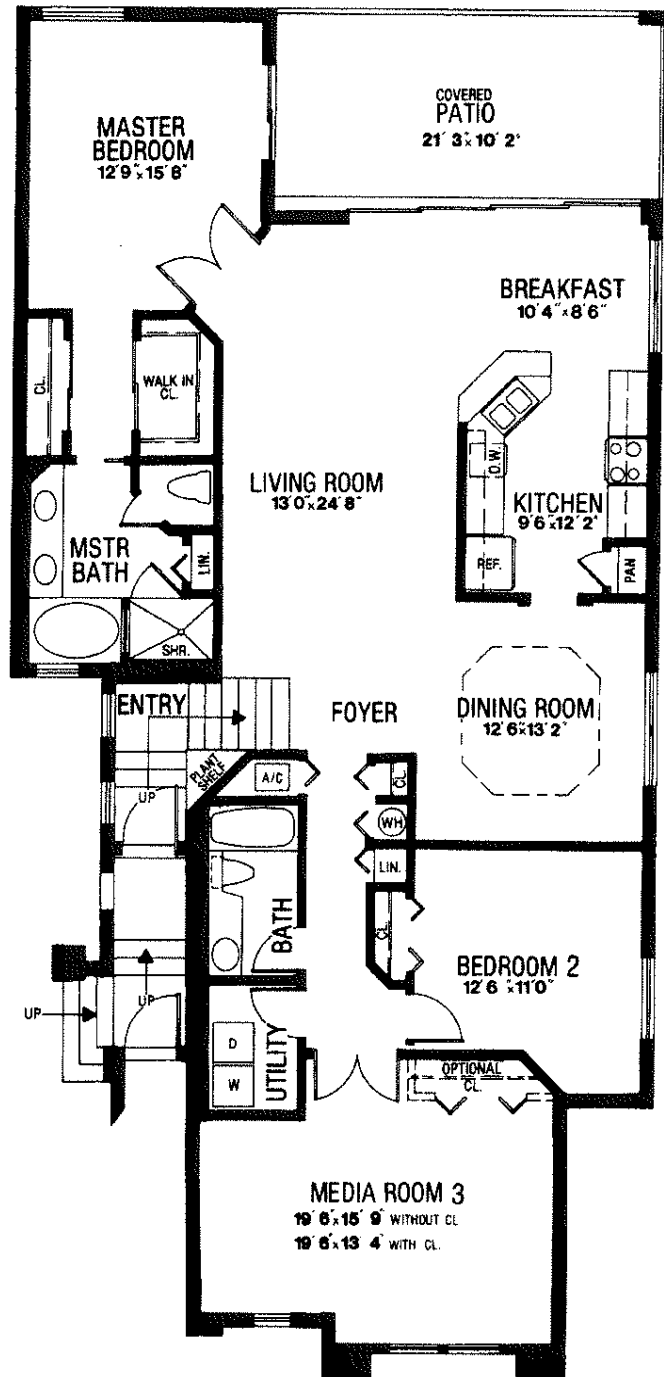
TAMARIND

3 Bedrooms, 2 Baths, Dining Room, Garage

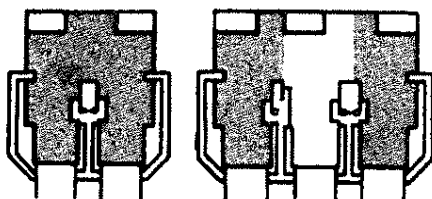
Total Living Area 2,176 Sq. Ft.
 Air Conditioned Living Area 1,960 Sq. Ft.
 Total Square Footage 2,445 Sq. Ft.



ALTERNATE A



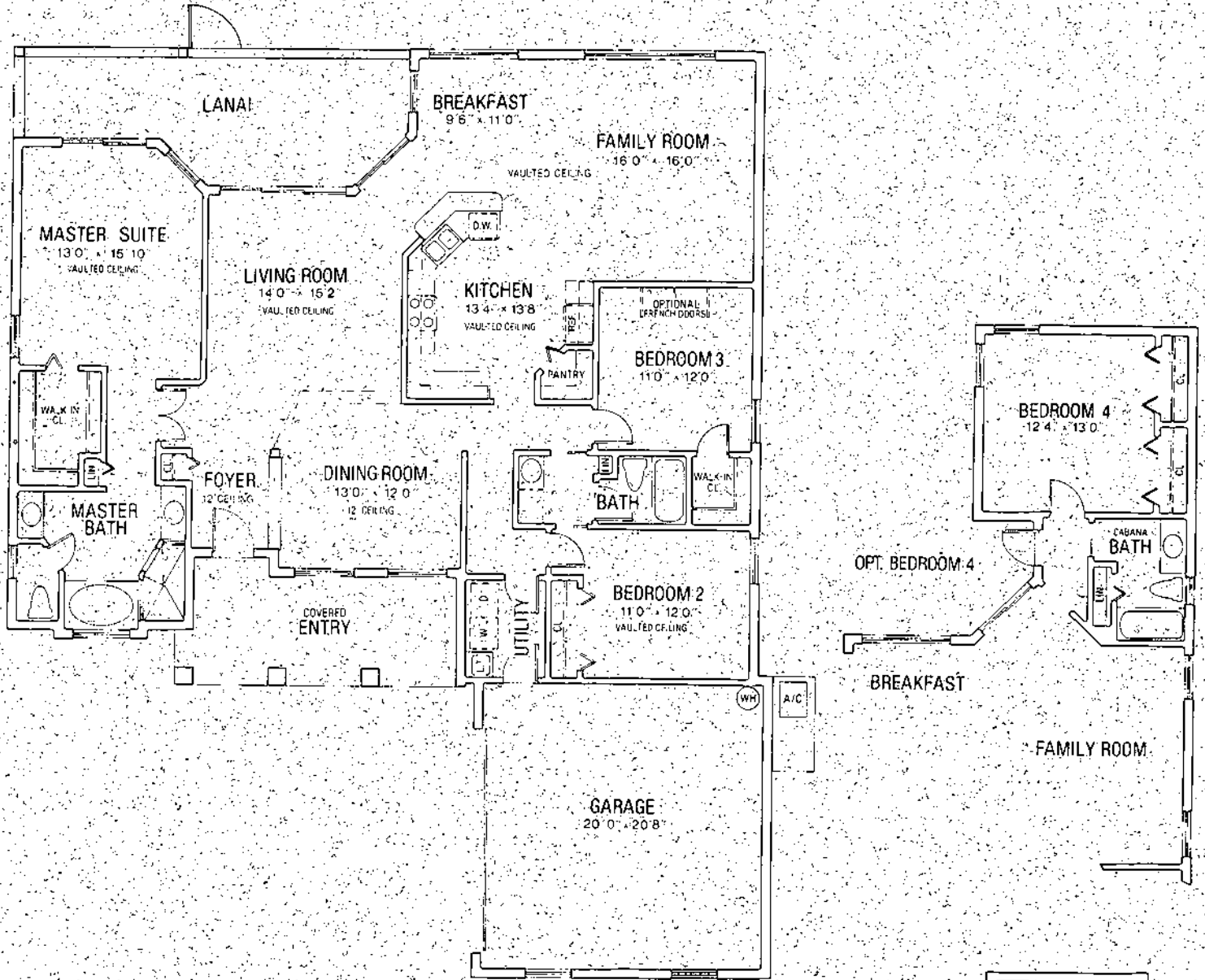
© 1993 BY CENTEX HOMES, INC.



2nd floor

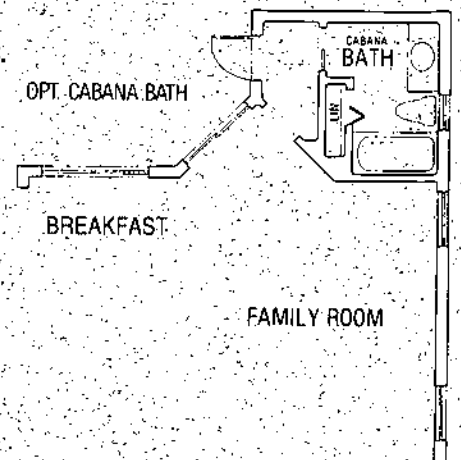
All plans, dimensions, and information are approximate and are subject to change without notice.
 Developer reserves the right to modify site plan, amenities and future product.

LEXINGTON



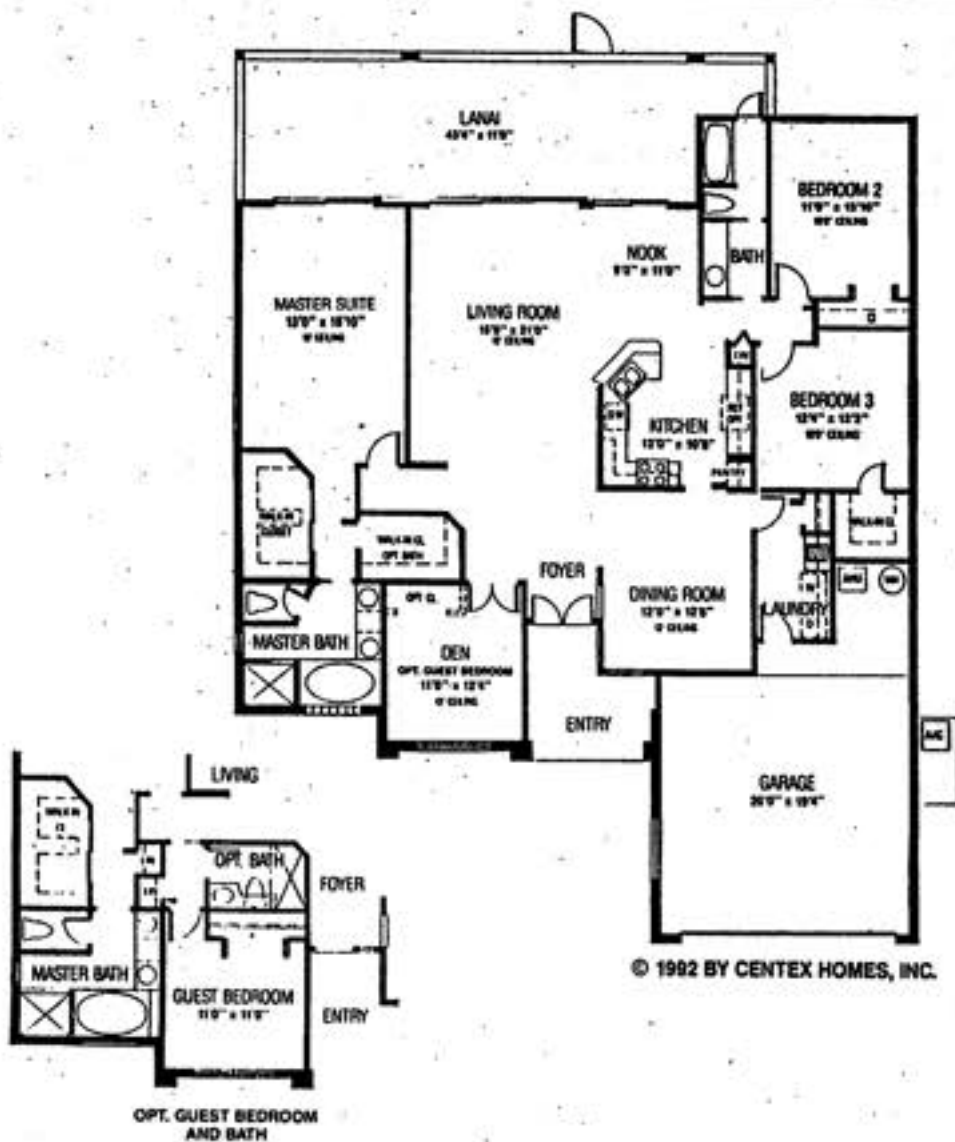
©1993 BY CENTEX HOMES, INC.

Air Conditioned Living Area 2,038 Sq. Ft.
 Total Square Footage 2,799 Sq. Ft.



All plans, dimensions and information are approximate and are subject to change without notice.
 Developer reserves the right to modify site plan, amenities and future product.

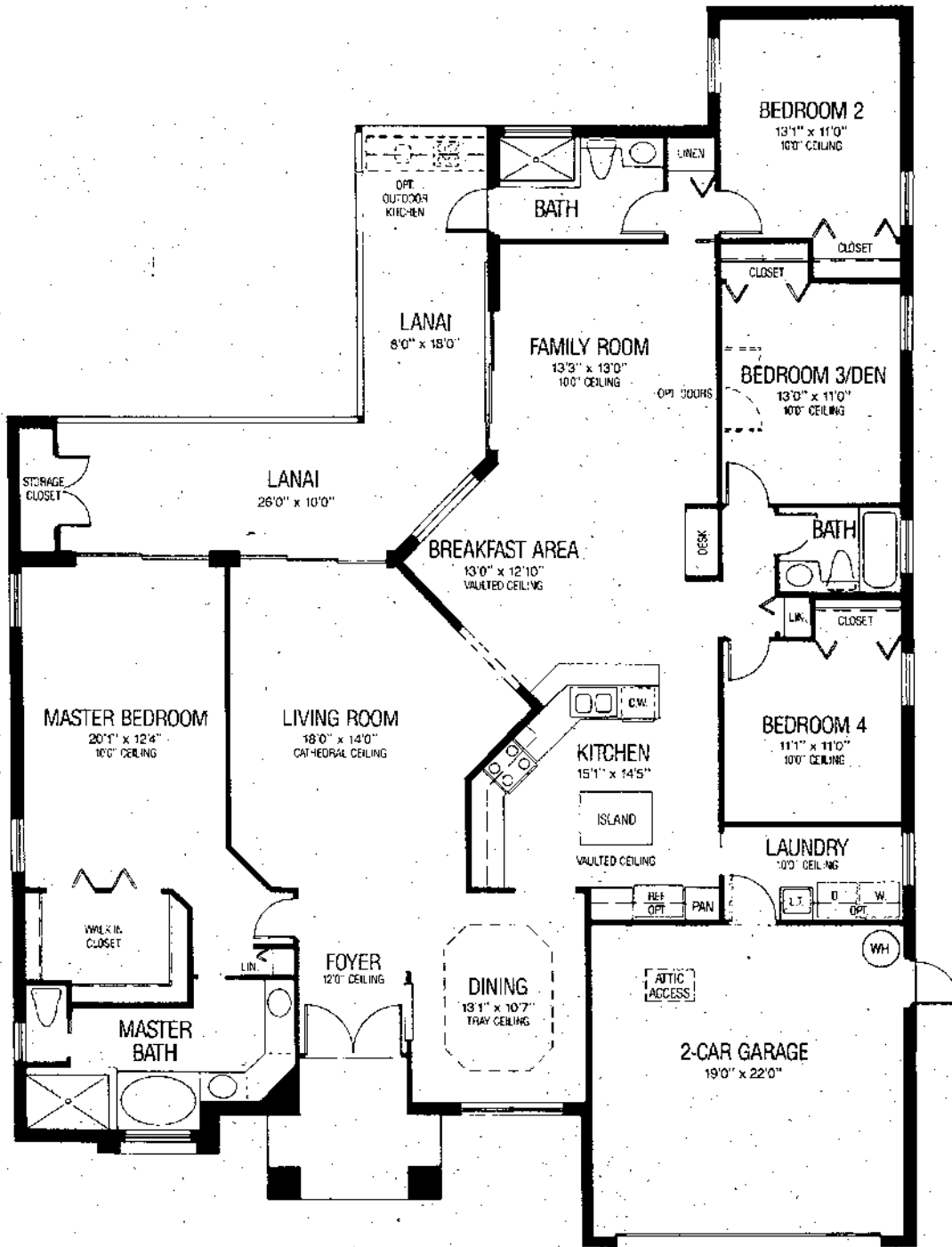
CAMBRIDGE



Air Conditioned Living Area 2,155 Sq. Ft.
Total Square Footage 3,333 Sq. Ft.

All plans, dimensions and information are approximate and are subject to change without notice. Developer reserves the right to modify site plan, amenities and future product.

DEERFIELD



©1993 BY CENTEX HOMES, INC.

Air Conditioned Living Area 2,370 Sq. Ft.
 Total Square Footage 3,229 Sq. Ft.

All plans, dimensions and information are approximate and are subject to change without notice.
 Developer reserves the right to modify site plan, amenities and future product.