

Floor Plans

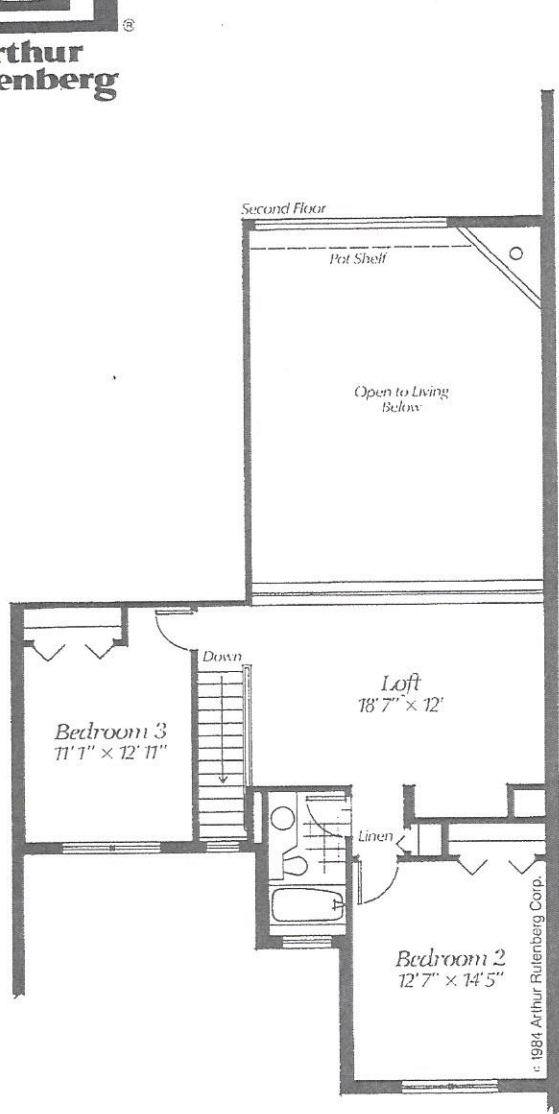
These floor plans have been assembled as a resource for you. They may not be inclusive of every home in the community.

Please note that over time, owners may make modifications to spaces that may not be captured in these original floor plans.

Renderings are not a guarantee of space measurement. Interested parties should verify through their own secured services.

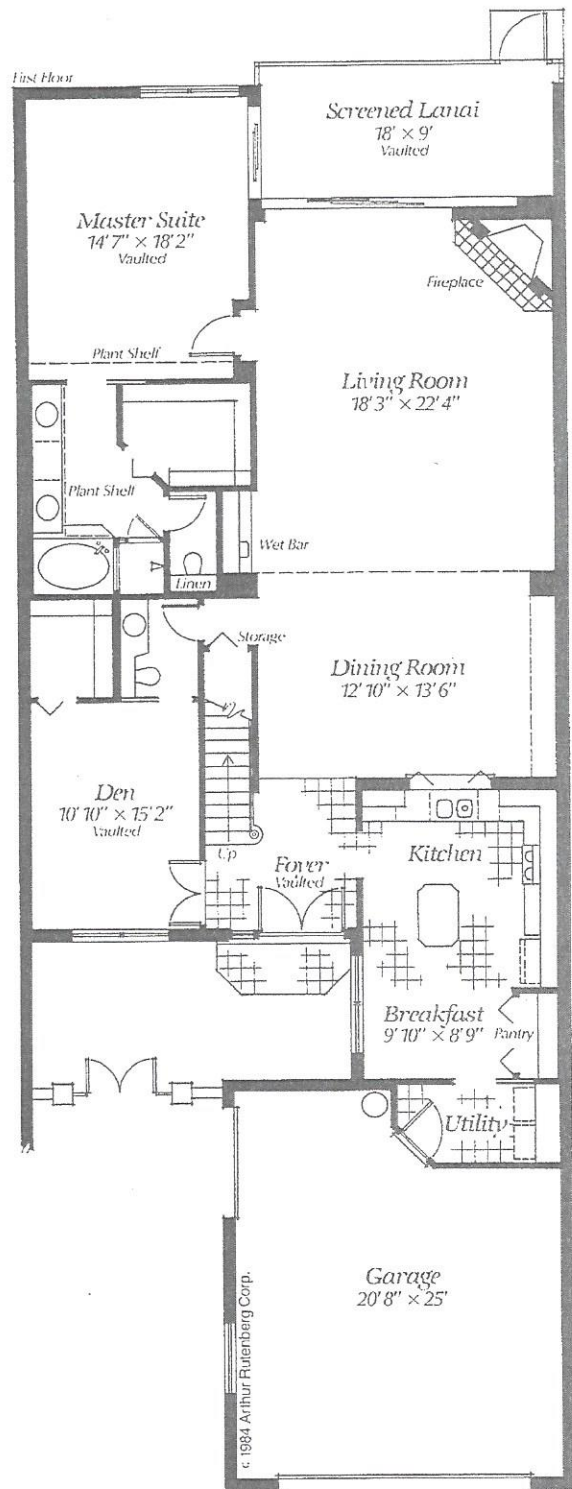


Aberdeen II



1st floor living	1889
2nd floor living	844
lanai	152
entry	30
garage	531
TOTAL	3446 sq. ft.

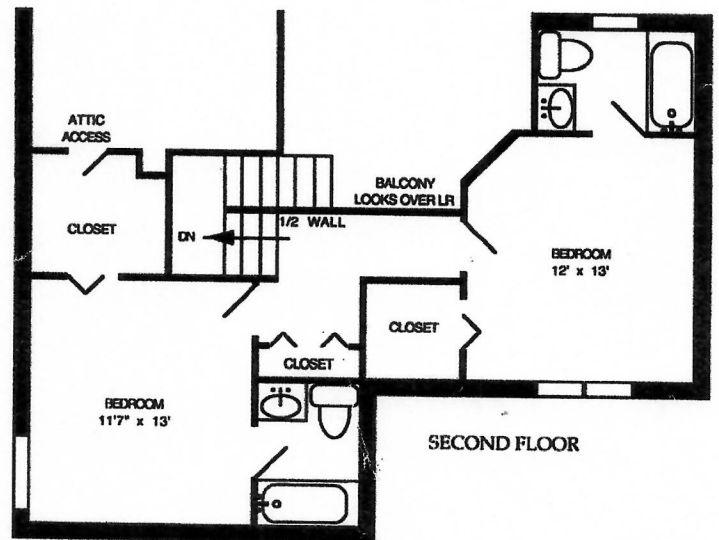
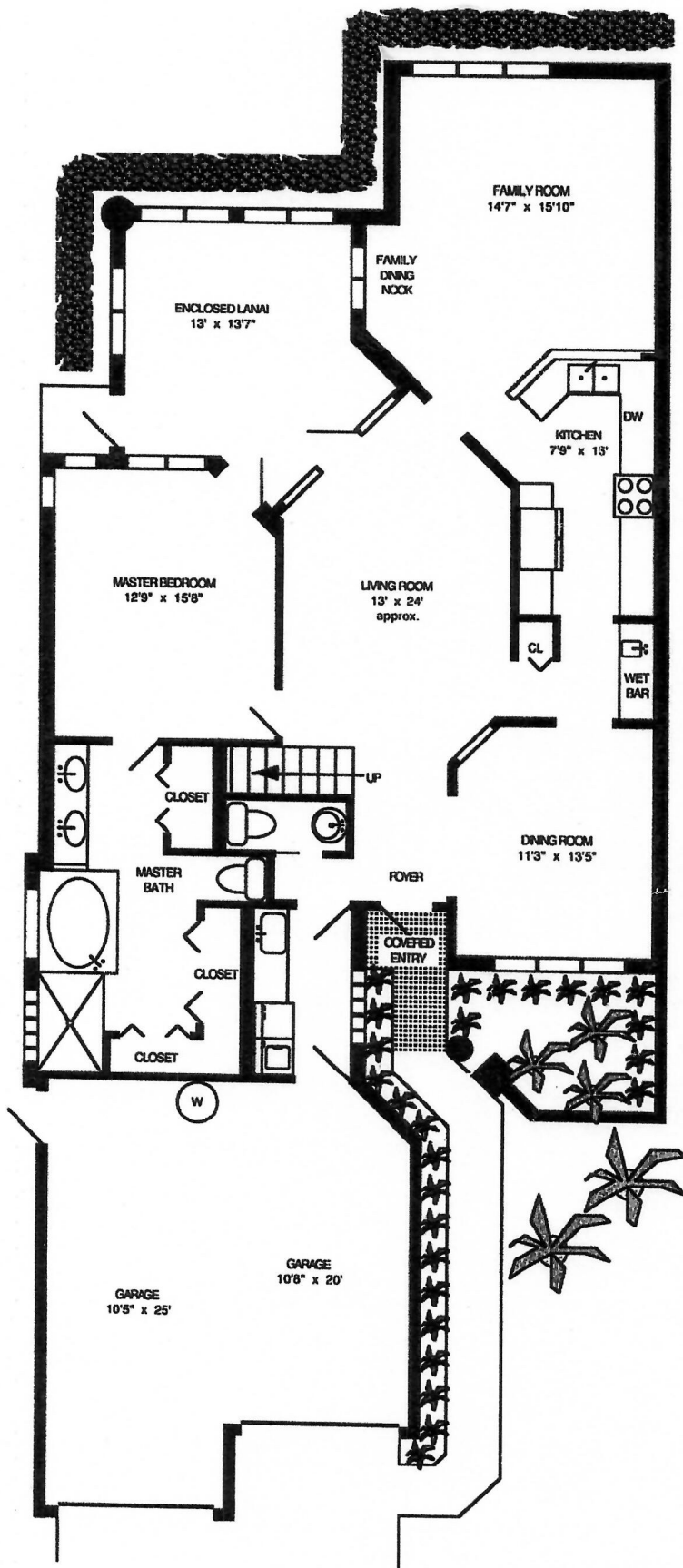
Arthur Rutenberg Homes reserves the right to make modifications to floor plans, materials and specifications without notice. Dimensions are approximate. Illustrations are artist renderings only.

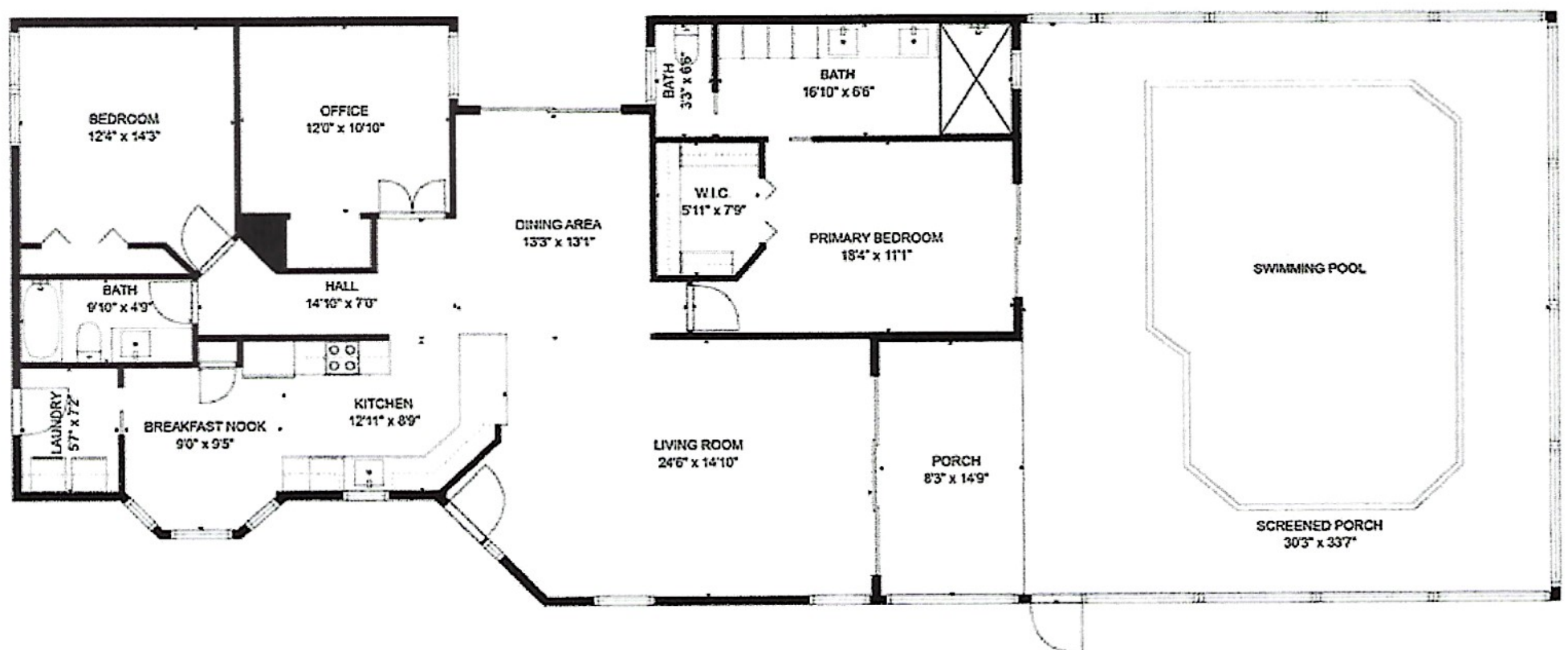


10370 Quail Crown Drive

LIVING AREA 1st FLOOR	1800
LIVING AREA 2nd FLOOR	650
TOTAL LIVING AREA	2450
GARAGE	513
FRONT ENTRY	37
GRAND TOTAL	3000

All measurements were made with precision, however are shown as approximate. Naples Floorplans 591-2181



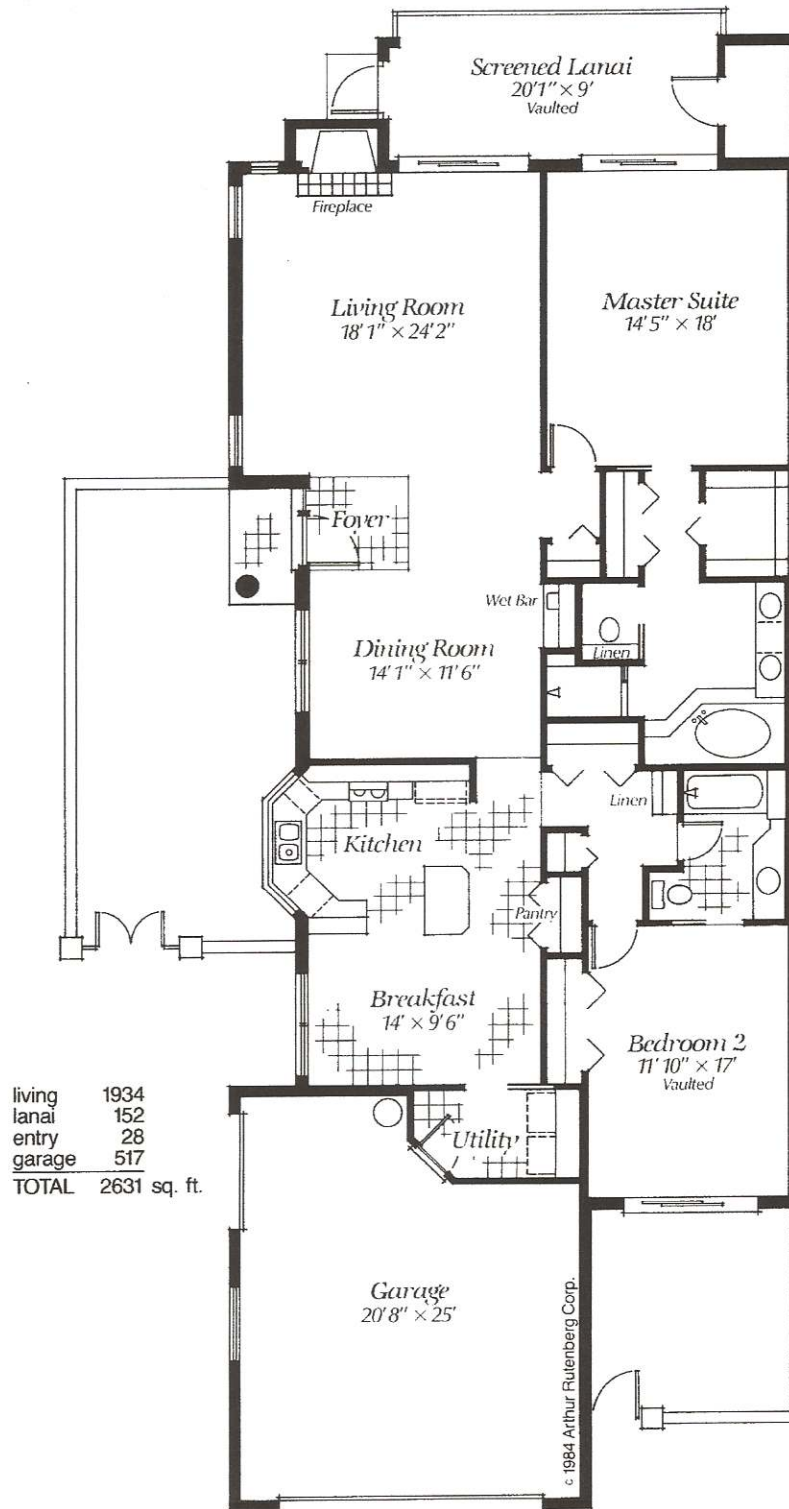


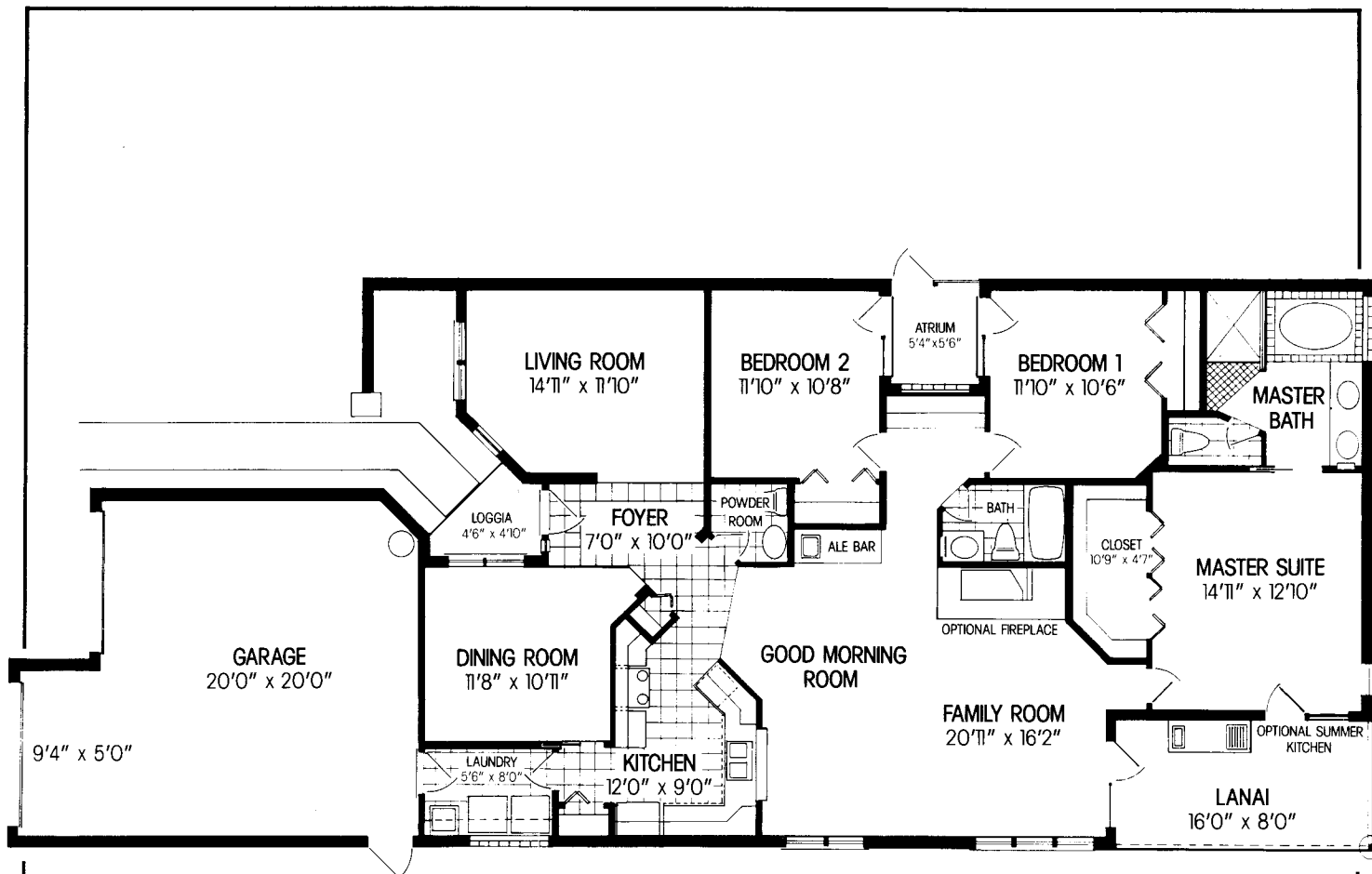
TOTAL: 1548 sq. ft
FLOOR 1: 1548 sq. ft
EXCLUDED AREAS: SCREENED PORCH: 608 sq. ft, PORCH: 121 sq. ft

MEASUREMENTS ARE CALCULATED BY CUBICASA TECHNOLOGY, DEEMED HIGHLY RELIABLE BUT NOT GUARANTEED.

SWFLAMLS

St. Andrews III





THE COLONIAL

LIVING AREA	1,949 sq. ft.
LANAI	128 sq. ft.
GARAGE	483 sq. ft.
ENTRY	20 sq. ft.
TOTAL AREA	2,580 sq. ft.

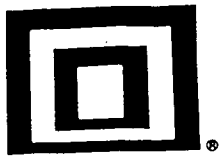
ORAL REPRESENTATIONS CANNOT BE RELIED UPON AS CORRECTLY STATING REPRESENTATIONS OF THE DEVELOPER.

FOR CORRECT REPRESENTATIONS MAKE REFERENCE TO THIS BROCHURE, AND TO THE DOCUMENTS REQUIRED BY SECTION 718.503 FLORIDA STATUTES TO BE FURNISHED BY A DEVELOPER TO A BUYER OR LESSEE.

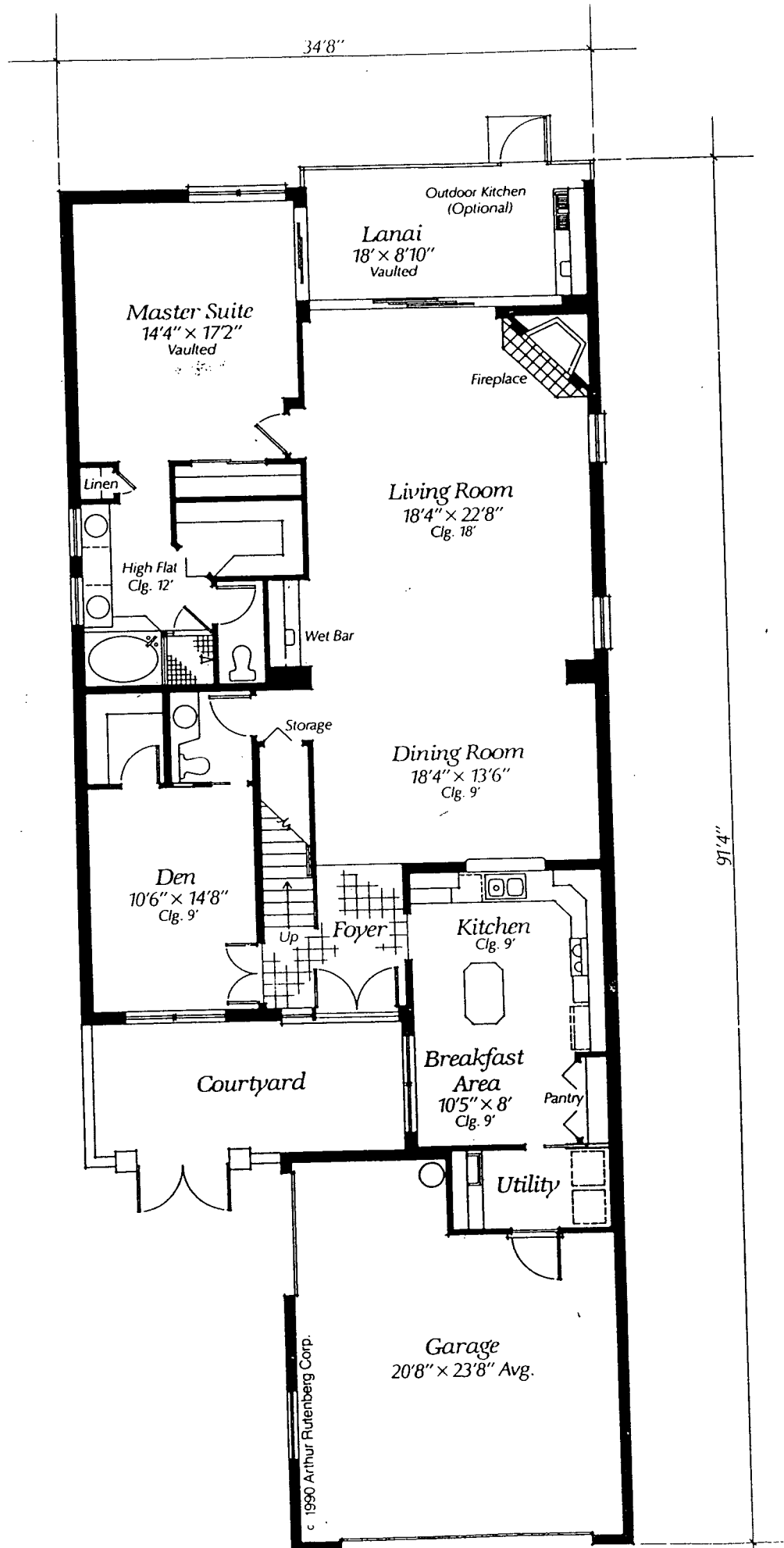
ALL FLOORPLANS, ILLUSTRATIONS, AND SQUARE FOOTAGES ARE PRELIMINARY AND APPROXIMATE AND ARE SUBJECT TO CHANGE.

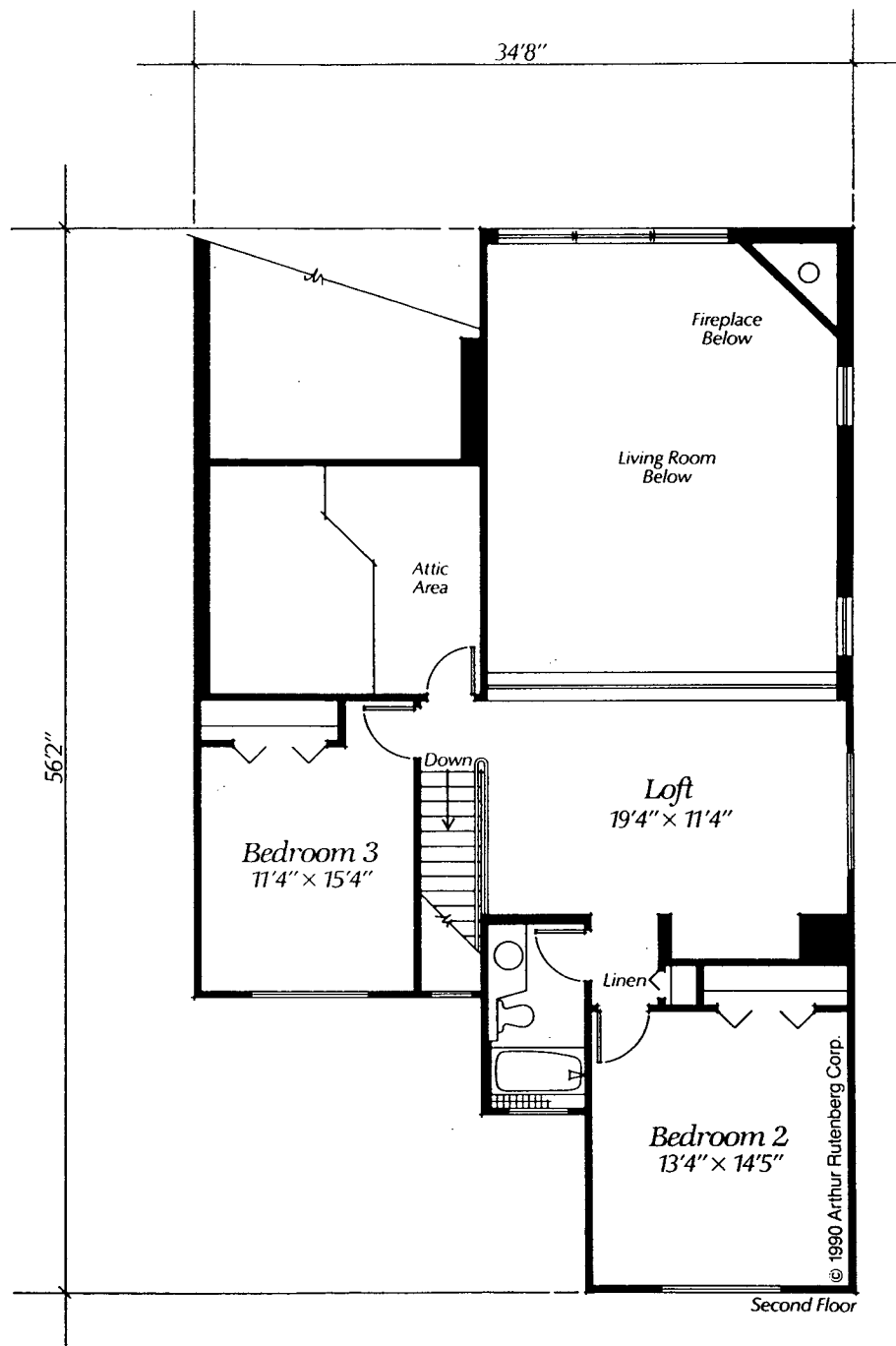
ALL DRAWINGS ARE ARTISTS REPRESENTATION.

ABERDEEN



Arthur
Rutenberg



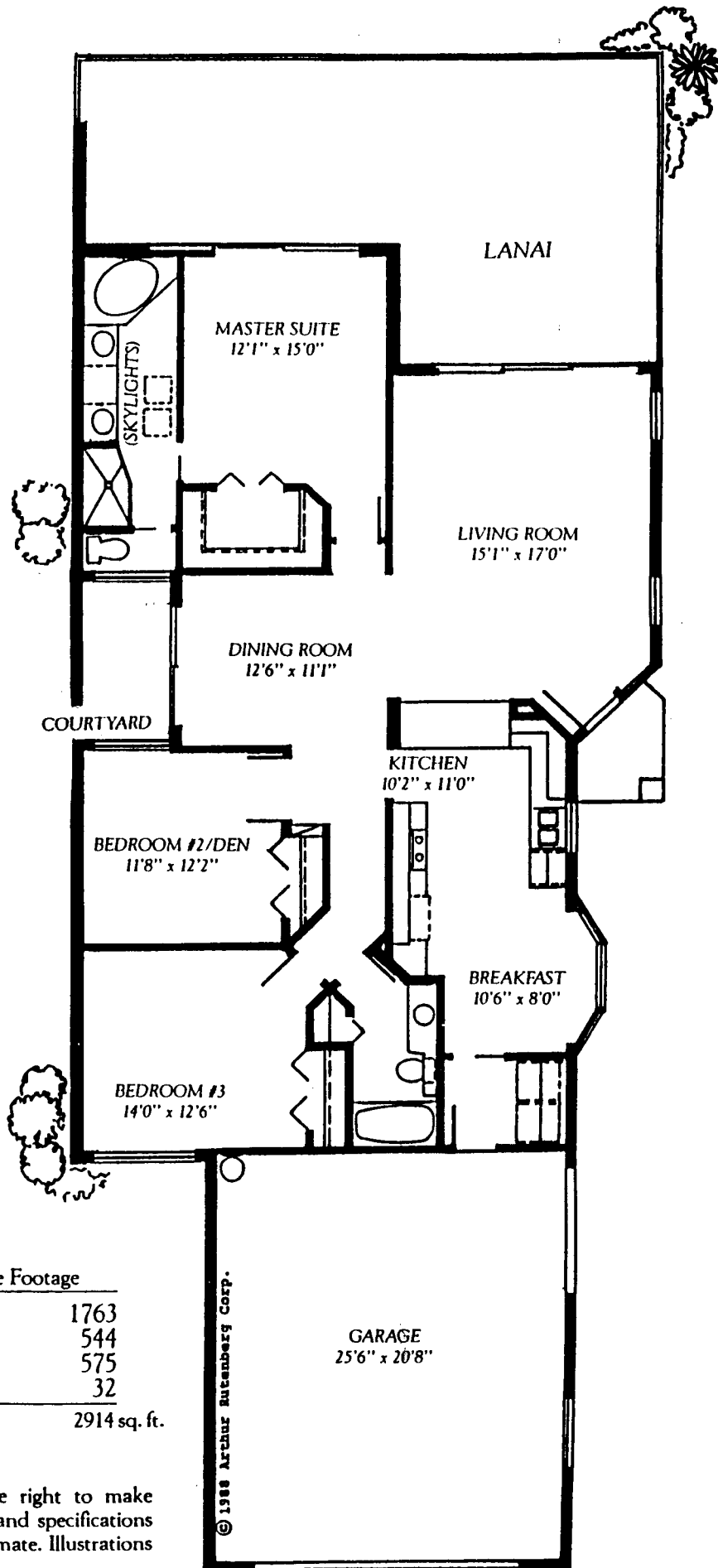


Square Footage

Living Area (1st Floor)	1,947
Living Area (2nd Floor)	780
Lanai	178
Garage	513
TOTAL	3,418

Arthur Rutenberg Homes reserves the right to make modifications to floor plans, materials and specifications without notice. Dimensions are approximate. Illustrations are artist renderings only.

ASTON II



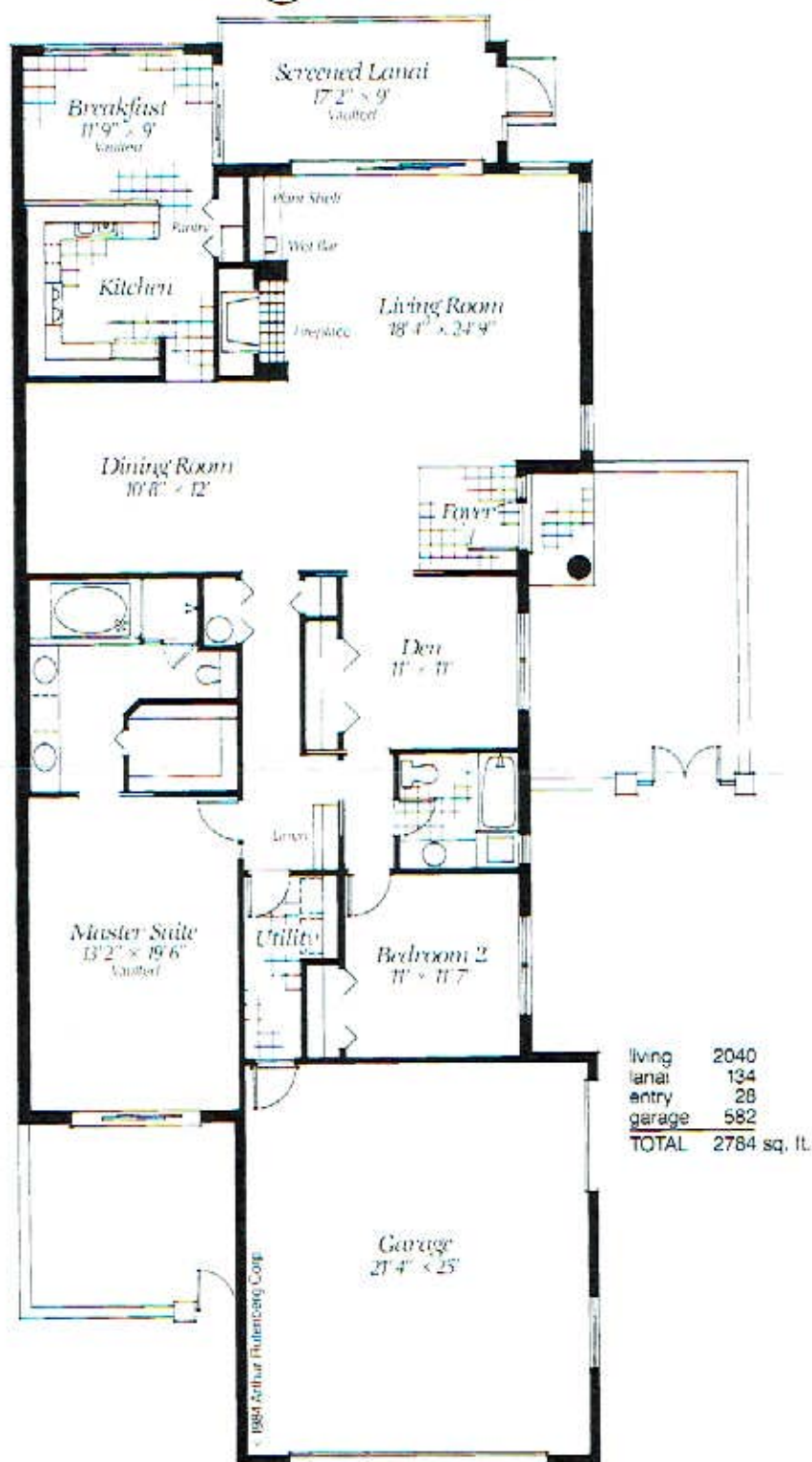
Square Footage	
Living	1763
Lanai	544
Garage	575
Entry	32
TOTAL	2914 sq. ft.

Arthur Rutenberg Homes reserves the right to make modifications to floor plans, materials and specifications without notice. Dimensions are approximate. Illustrations are artist renderings only.



**Arthur
Rutenberg**

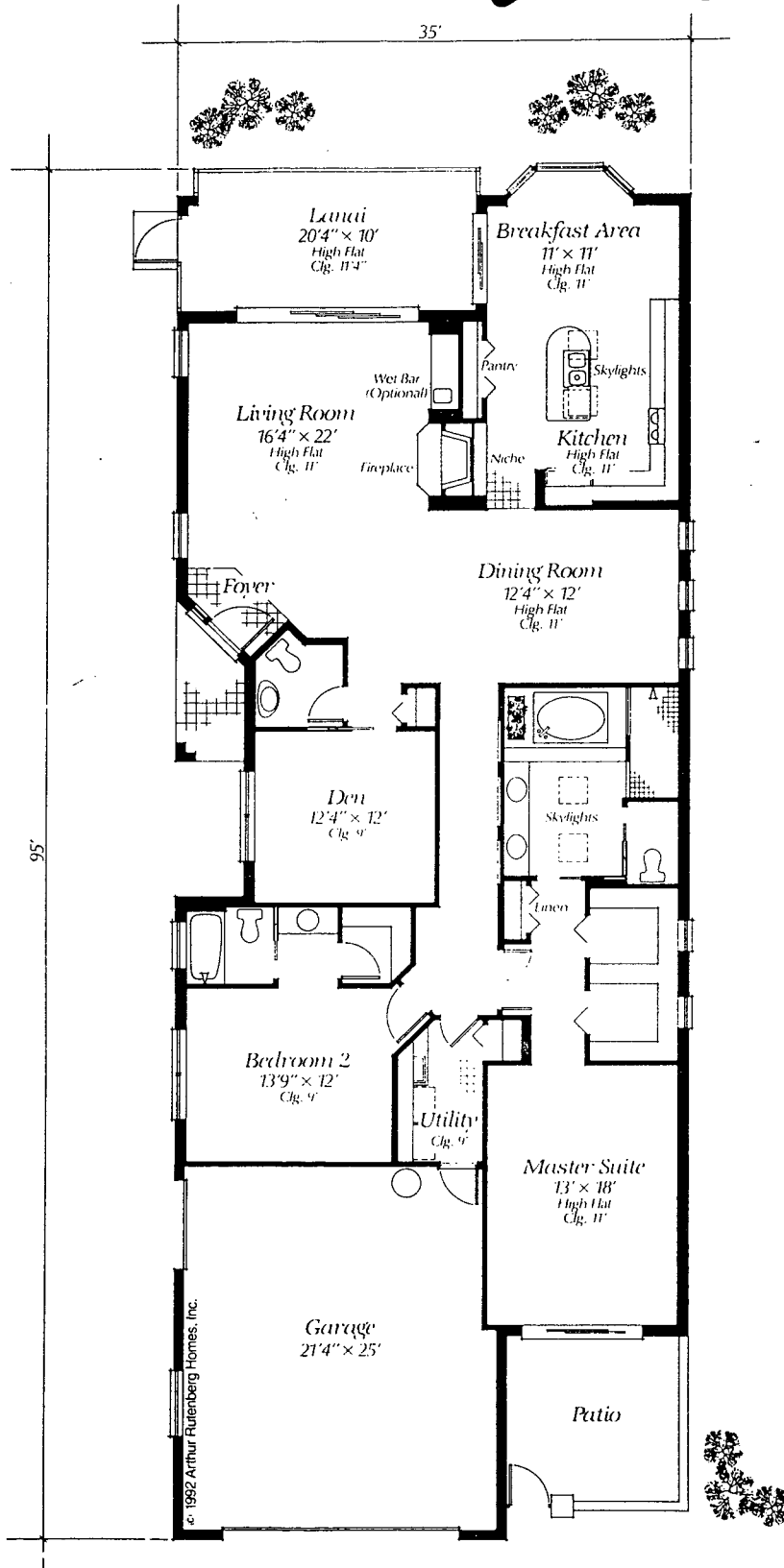
Augusta III



Arthur Rutenberg Homes reserves the right to make modifications to floor plans, materials and specifications without notice. Dimensions are approximate. Illustrations are artist renderings only.



Augusta II

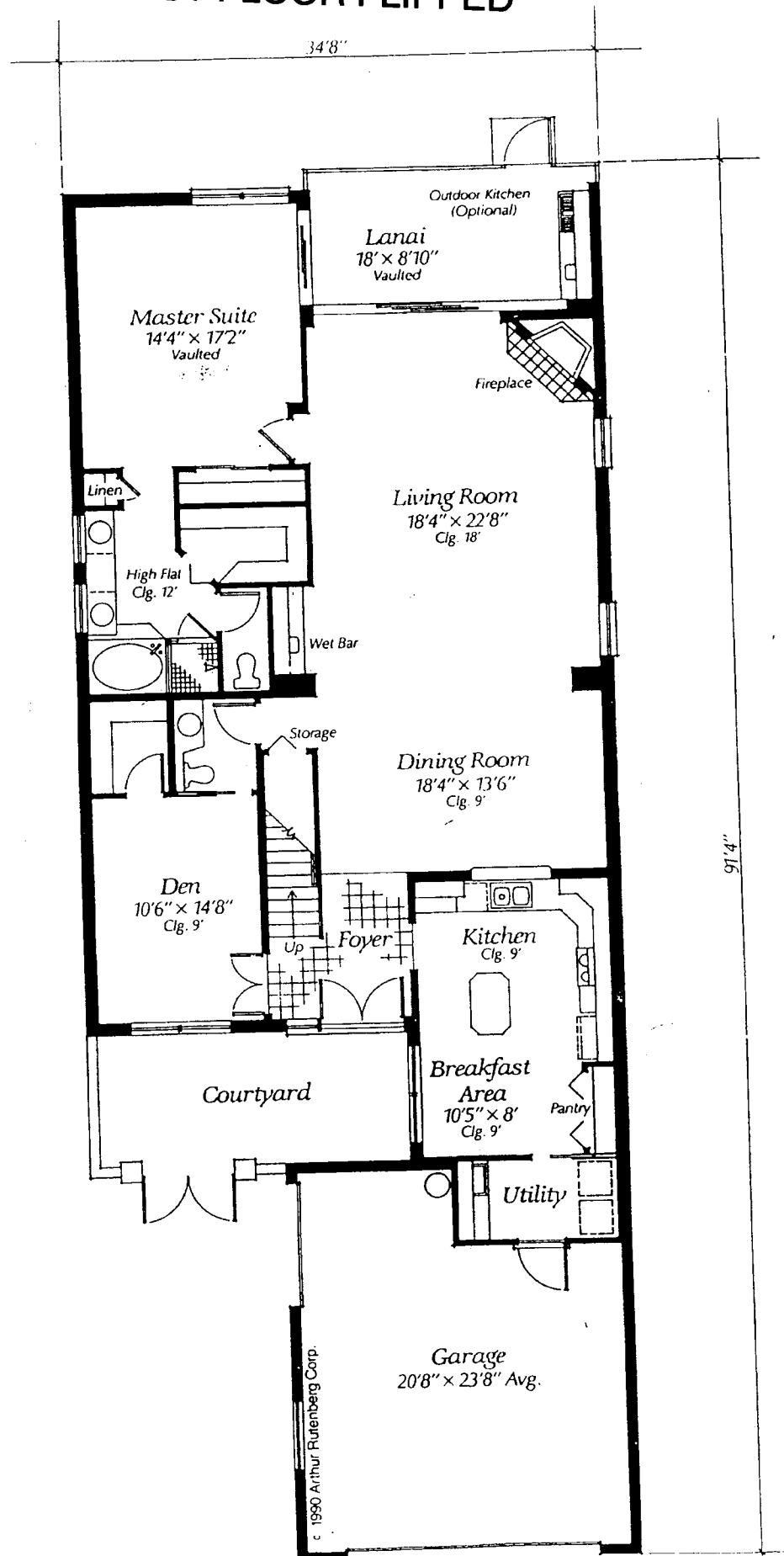


Square Footage

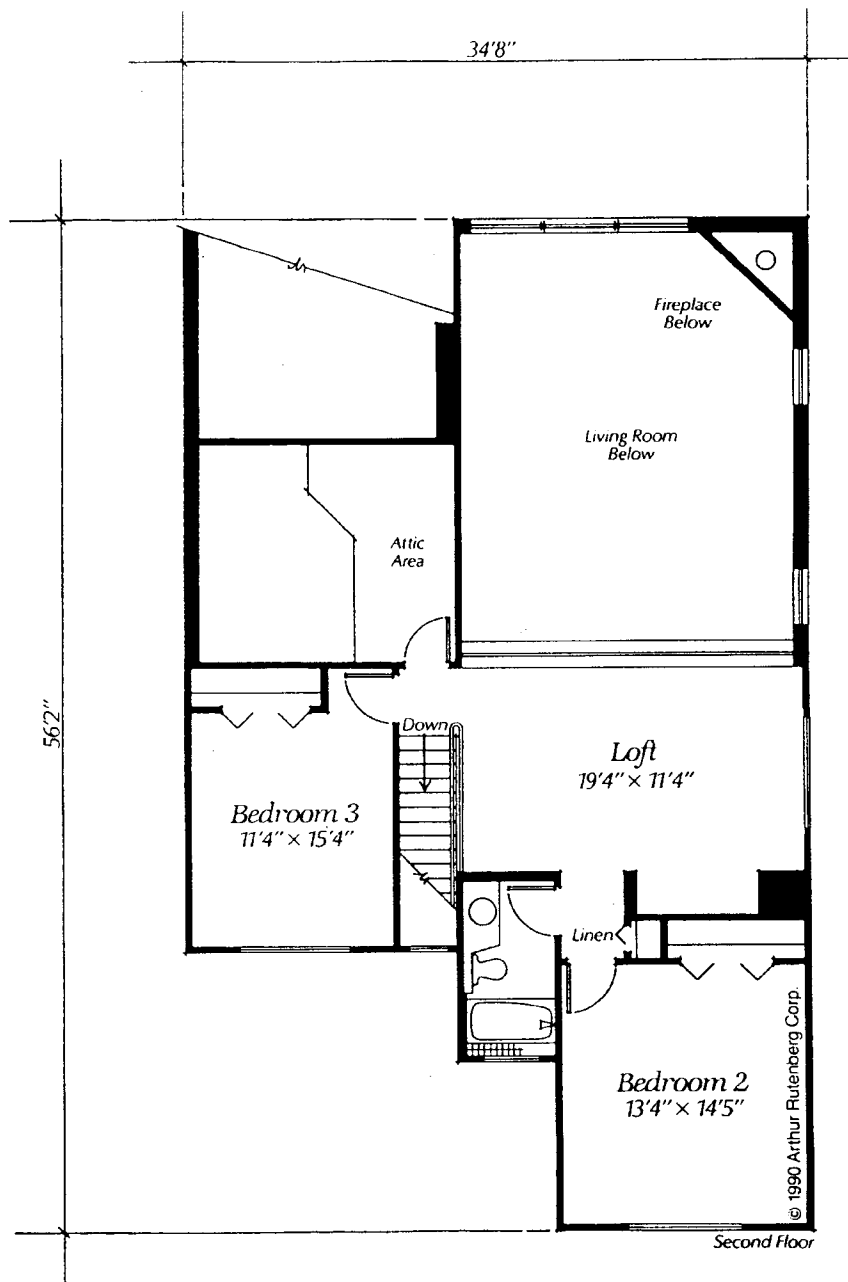
Living Area	2275
Lanai	202
Garage	574
TOTAL	3051

Arthur Rutenberg Homes reserves the right to make modifications to floor plans, materials and specifications without notice. Dimensions are approximate. Illustrations are artist renderings only.

FIRST FLOOR FLIPPED



2ND FLOOR FLIPPED

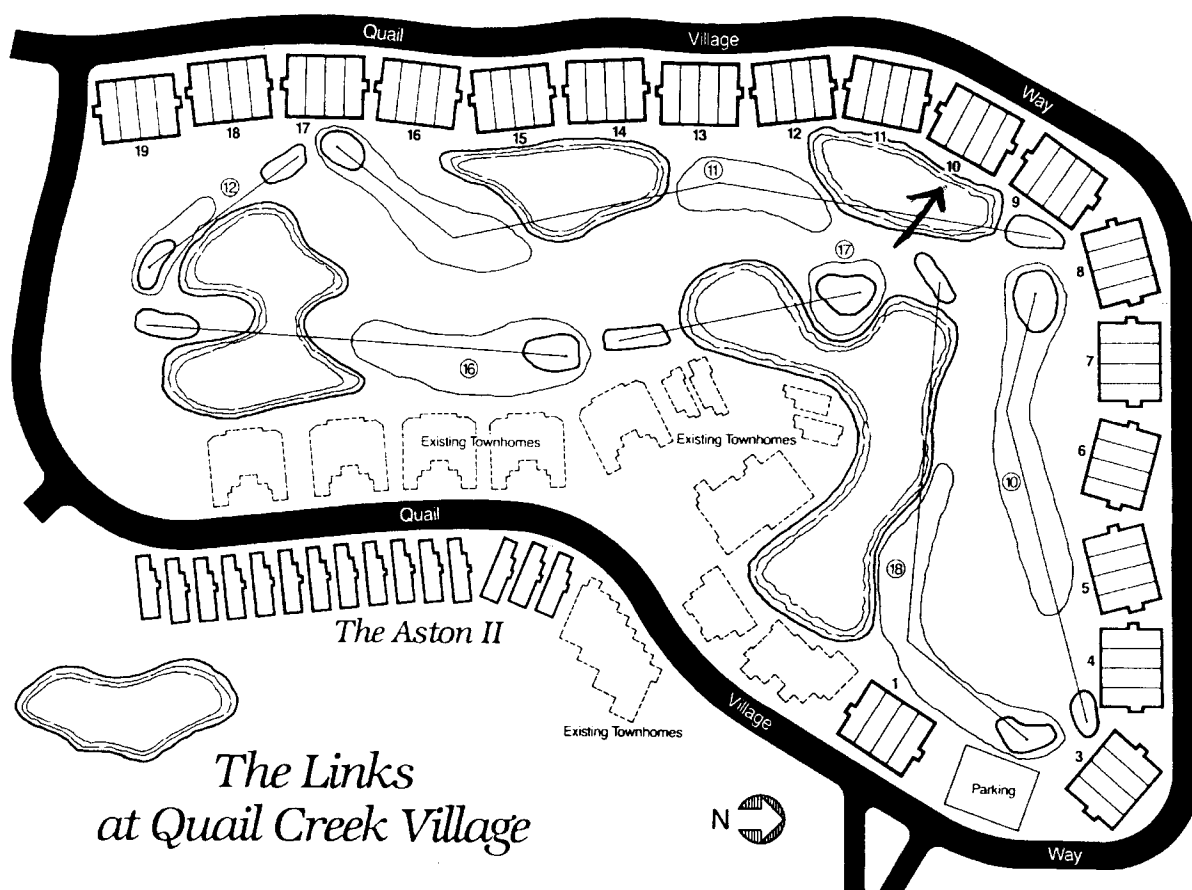


Square Footage

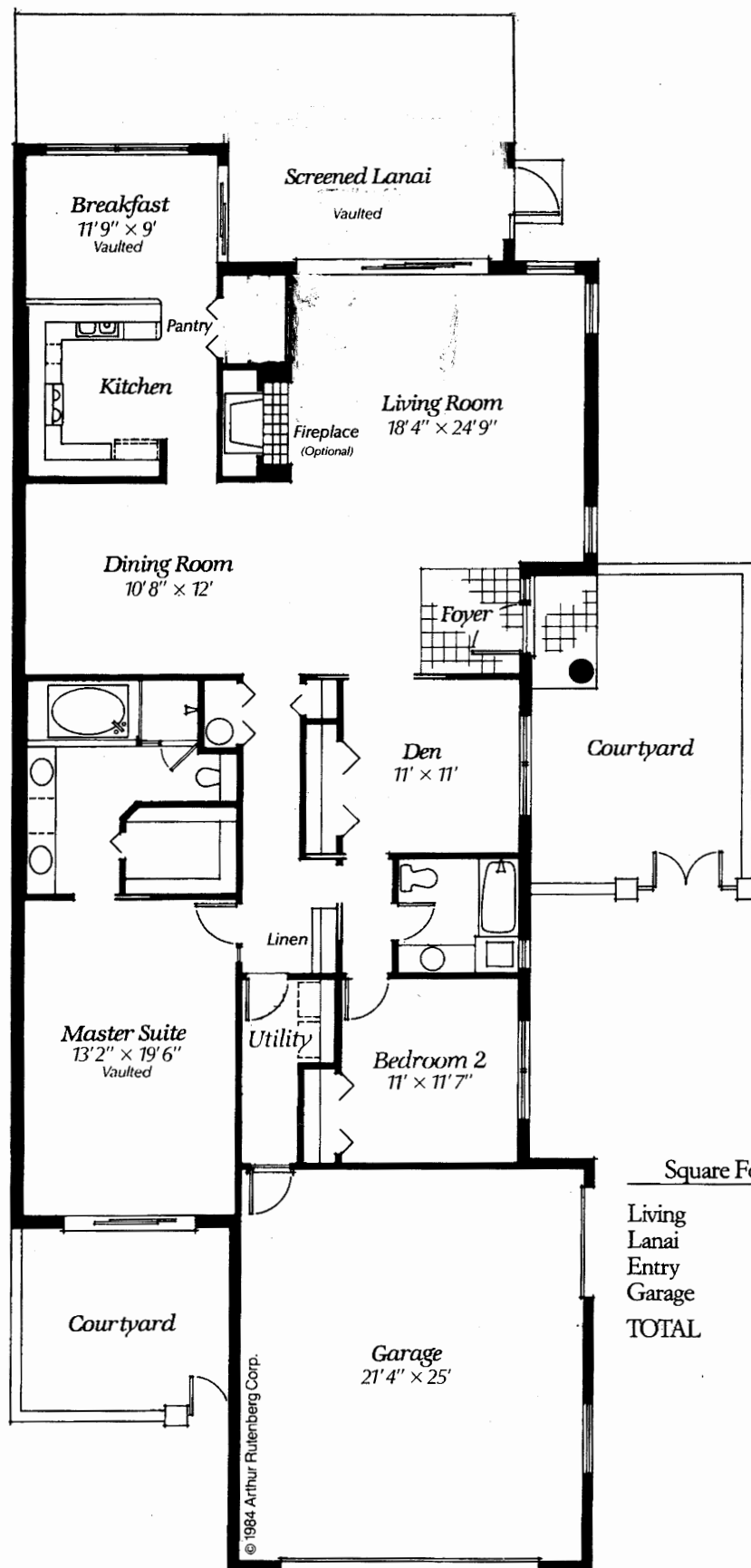
Living Area (1st Floor)	1,947
Living Area (2nd Floor)	780
Lanai	178
Garage	513
TOTAL	3,418

Arthur Rutenberg Homes reserves the right to make modifications to floor plans, materials and specifications without notice. Dimensions are approximate. Illustrations are artist renderings only.

SITE PLAN

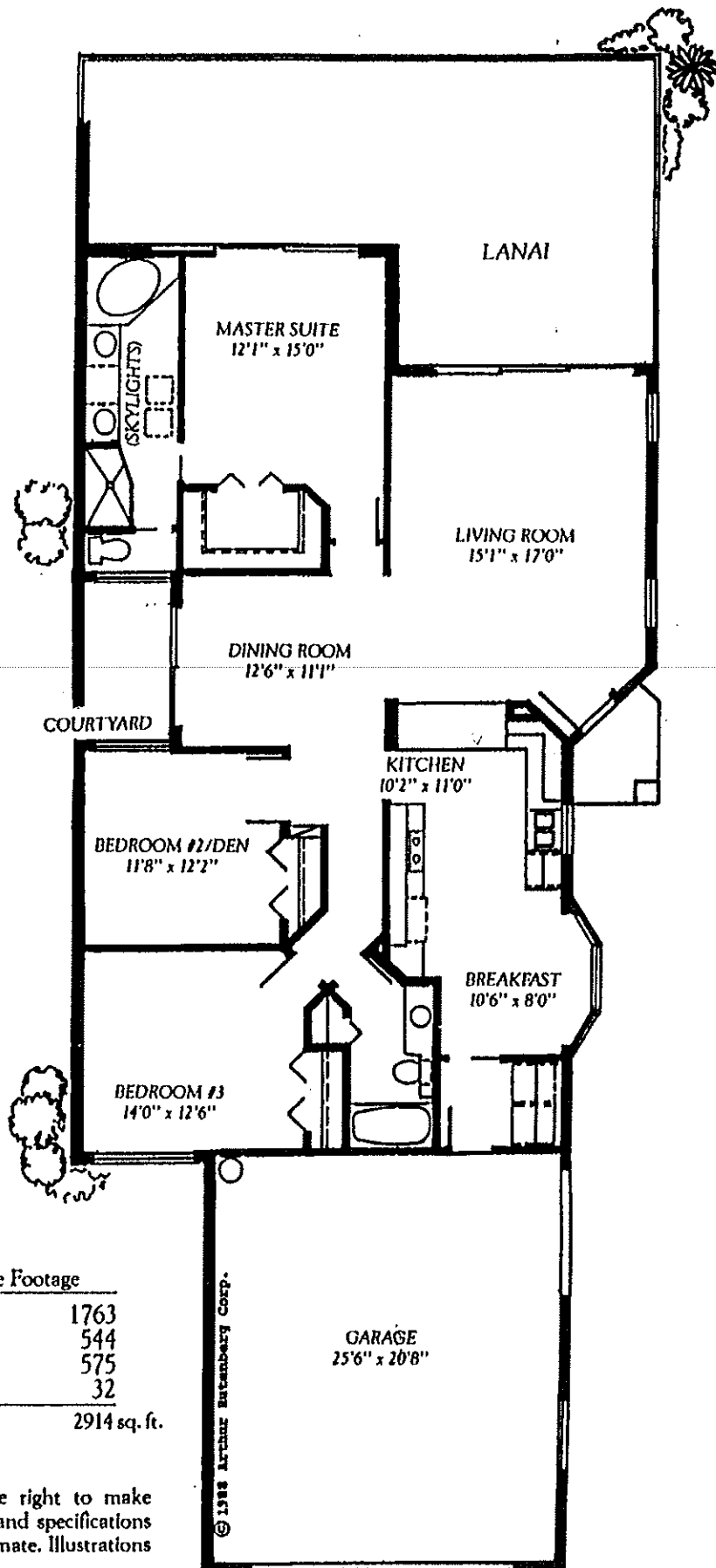


AUGUSTA III



Square Footage	
Living	- 2040
Lanai	- 134
Entry	- 28
Garage	- 582
TOTAL	- 2784

ASTON II



Square Footage	
Living	1763
Lanai	544
Garage	575
Entry	32
TOTAL	2914 sq. ft.

Arthur Rutenberg Homes reserves the right to make modifications to floor plans, materials and specifications without notice. Dimensions are approximate. Illustrations are artist renderings only.



WELEK REALTY
OF NAPLES
A Division of Quail Properties, Inc.
 4500 Executive Drive • Suite 200 Quail Plaza
 Naples, Florida 33999
 (941) 597-7160

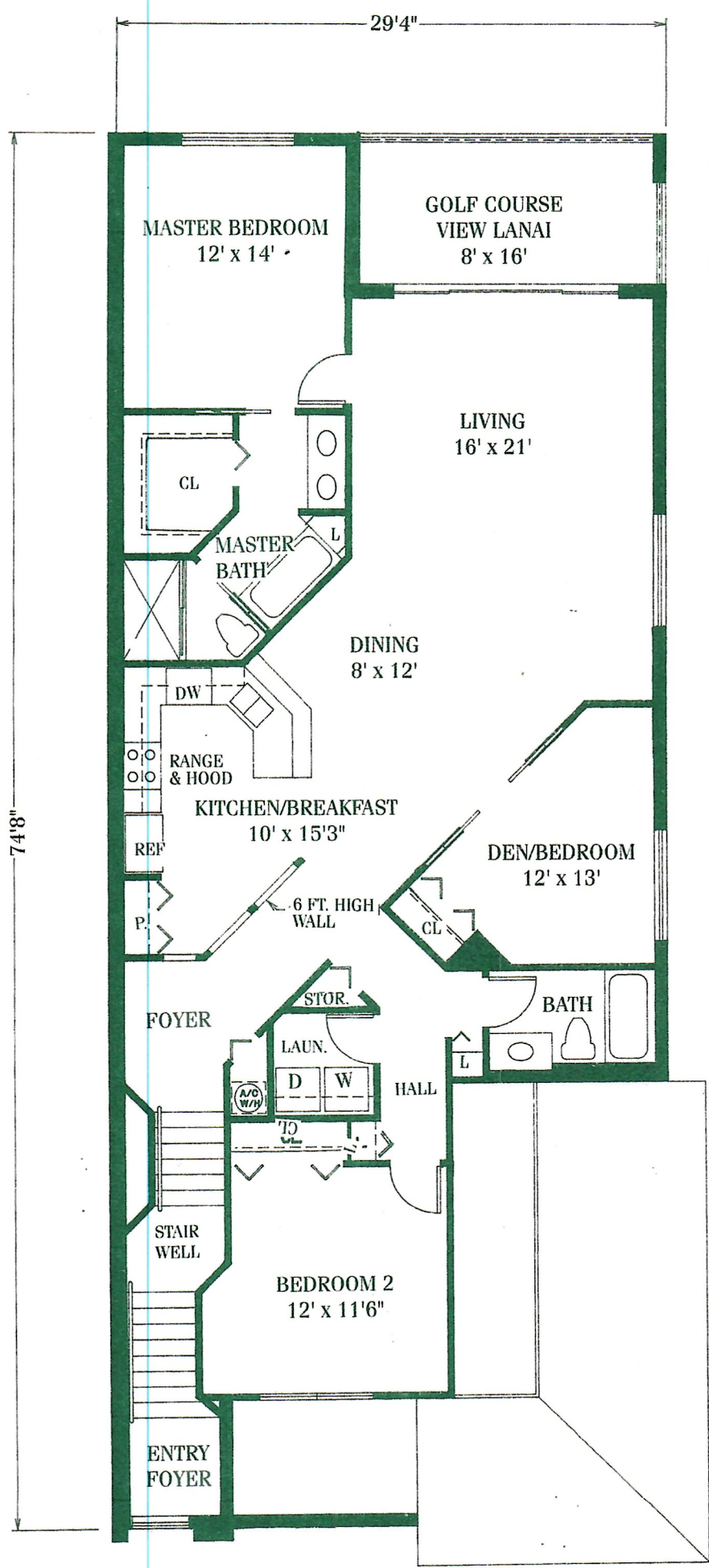


GREENBRIER
 ON THE FAIRWAYS
 AT QUAIL CREEK VILLAGE

SECOND FLOOR UNIT
3 BEDROOM/2 BATH

A/C Living Area	1,589 SQ.FT.
Lanai	128 SQ.FT.
Garage	318 SQ.FT.
Total	2,035 SQ.FT.

All dimensions are approximate and subject to change without notice.





THE MEADOWS

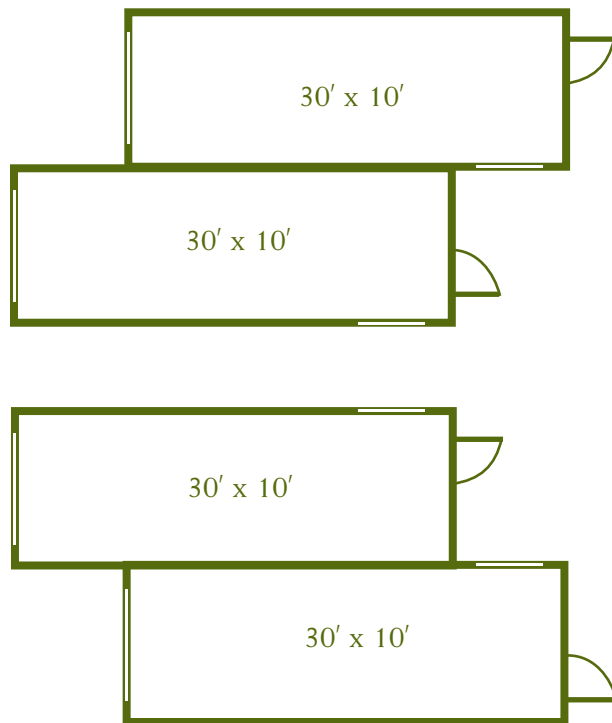
At Quail Creek Village

Siteplan



Site Plan and Garage Configurations are Subject to Change.

Garage Plans



Garage A

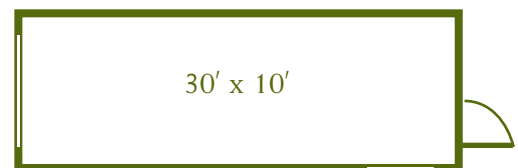
Units 101 to 604

and Units 901 to 904

Plans A & B Include area for golf Cart Storage.
Garage configurations and location of swinging
doors and overhead golf storage doors are subject
to change. All dimensions are approximate.

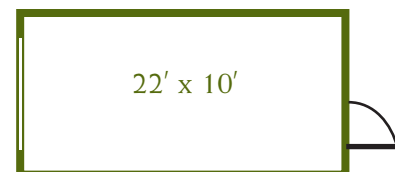
Garage B

*Units 702, 704, 1001-1004, 1102,
1104, 1401, 1402, 1501, 1502*



Garage C

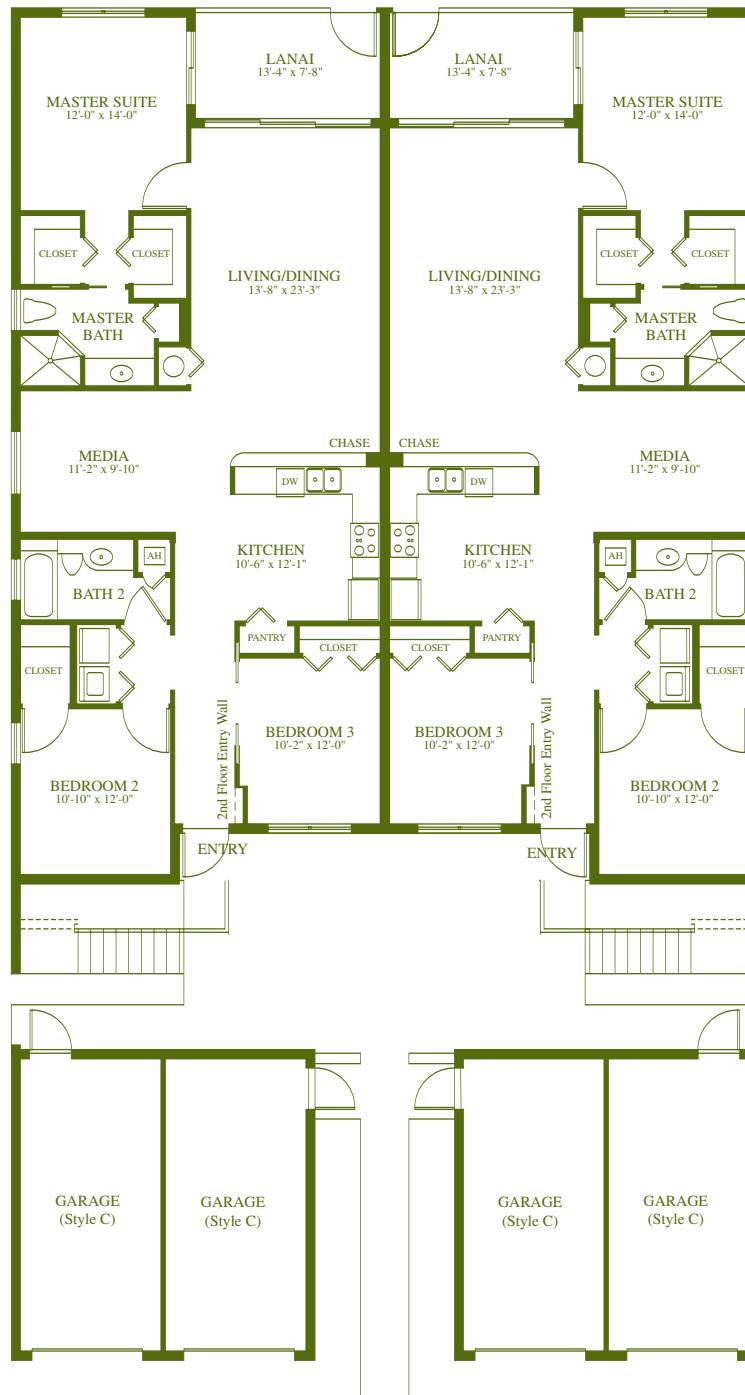
*Units 701, 703, 801-804, 1101,
1103, 1201-1204, 1301-1304,
1403, 1404, 1503, 1504*



THE MEADOWS

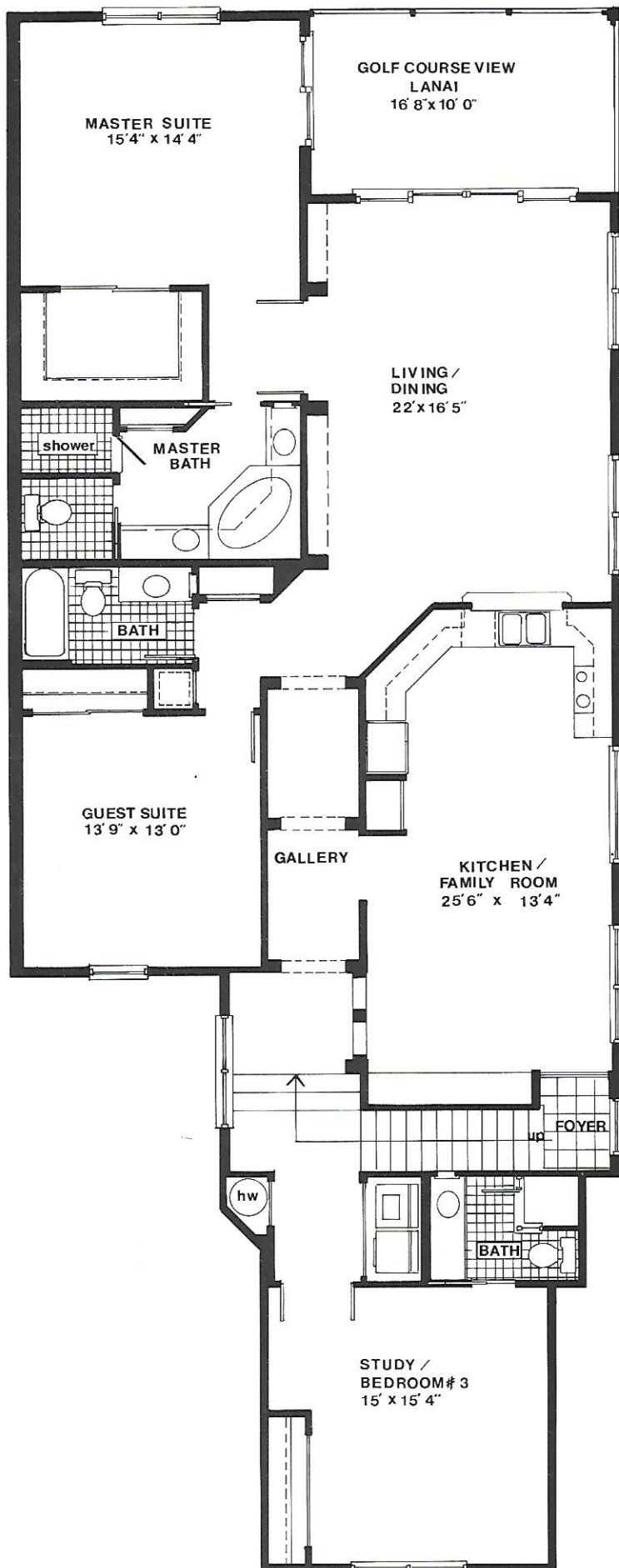
At Quail Creek Village

Floorplan



A.C.	1547 sq. ft.
Lanai	106 sq. ft.
Garage	247.5 sq. ft.
Total	1900.5 sq. ft.

All dimensions are approximate subject to garage plan



WARWICK

Square Footage

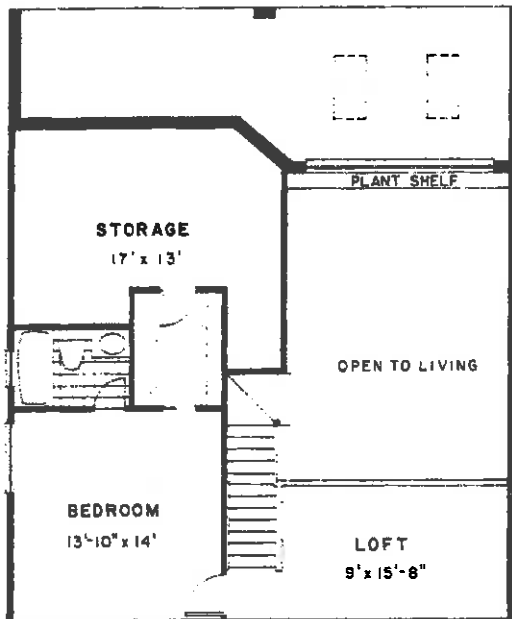
Living	2,292
Lanai	168
Garage	276
Total	2,736

Artegan, Inc. Developers reserves the right to make modifications to floor plans, materials and specifications without notice. Dimensions are approximate. Illustrations are artist renderings only.

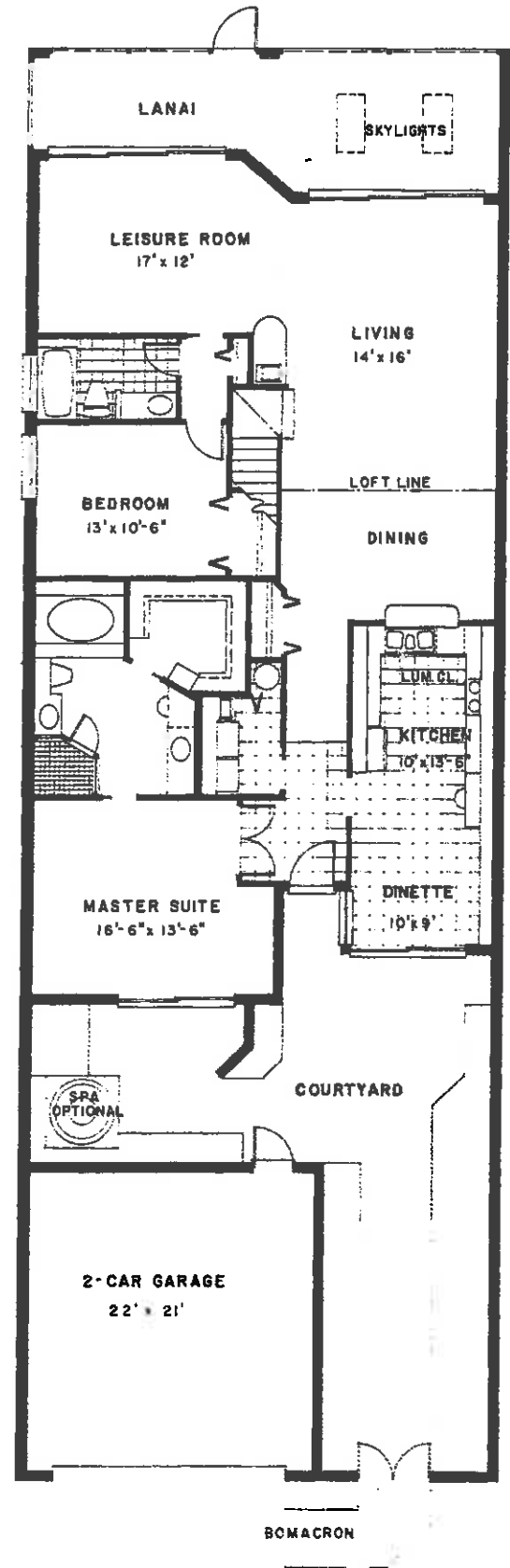


VILLAS

AT QUAIL CREEK
IN THE VILLAGE



LOFT OPTION 451 sq. ft.

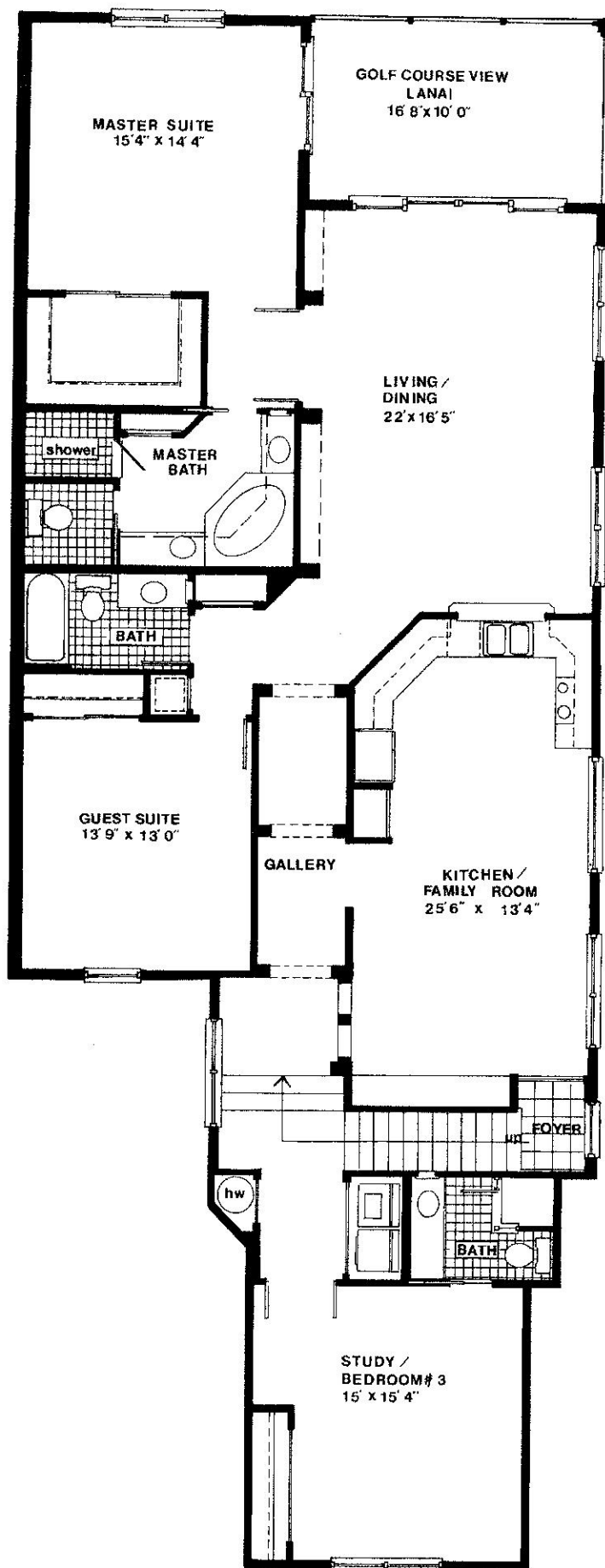


AREAS

LIVING	1800	(without options)
LANAI	276	
GARAGE	455	
TOTAL	2531	

ALSO AVAILABLE WITH 2½ CAR GARAGE

All dimensions are approximate and subject to change.

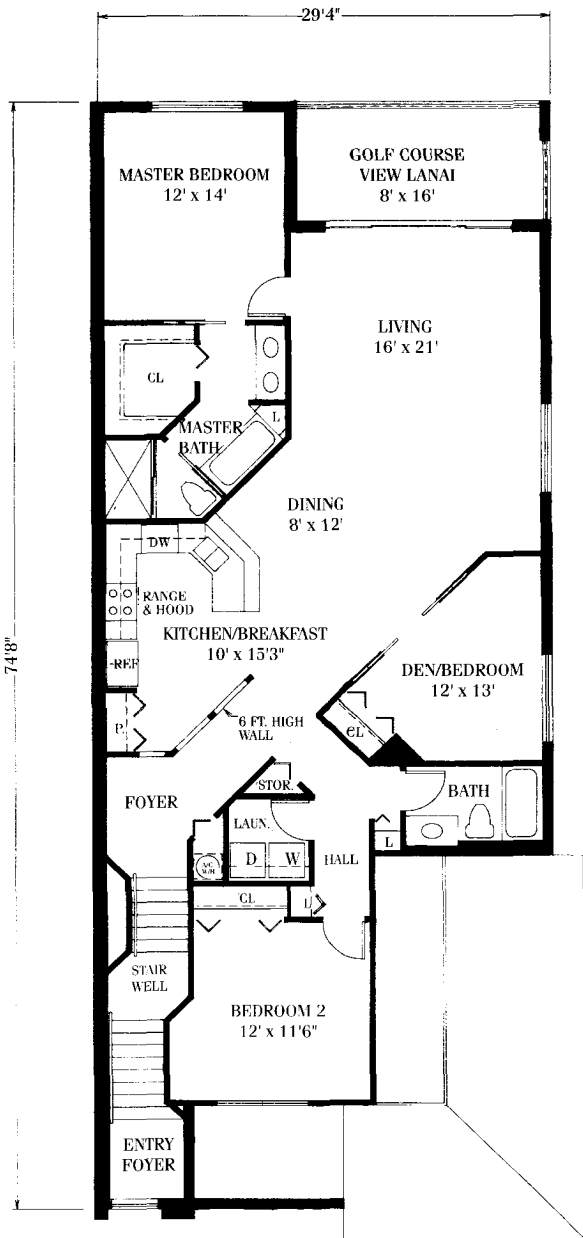


WARWICK

Square Footage

Living	2,292
Lanai	168
Garage	276
Total	2,736

Artegan, Inc. Developers reserves the right to make modifications to floor plans, materials and specifications without notice. Dimensions are approximate. Illustrations are artist renderings only.



SECOND FLOOR UNIT 3 BEDROOM/2 BATH

A/C Living Area 1,589 SQ.FT.

Lanai 128 SQ.FT.

Garage 318 SQ.FT.

Total 2,035 SQ.FT.

All dimensions are approximate and subject to change without notice.