

## Floor Plans

These floor plans have been assembled as a resource for you. They may not be inclusive of every home in the community.

Please note that over time, owners may make modifications to spaces that may not be captured in these original floor plans.

Renderings are not a guarantee of space measurement. Interested parties should verify through their own secured services.

# Naples Bay Resort

The Boutique Waterfront Destination



## Map Key

### ACCOMMODATIONS

- 1 Lobby Check-in / Valet
- 2 Hotel Waterview Guest Rooms & Suites
- 3 Cottages
- 4 Captain's Lounge

### DINING & SUNDRIES

- 5 1500 SOUTH
- 6 Catalina Café
- 7 BlueWater Bar & Grill
- 8 Bonefish Grill
- 9 Ships Store

### ACTIVITIES & SHOPPING

- 10 Tennis Center  
Pro Shop  
Jungle Gym (Kid's Playground)
- 11 Fitness Center,  
Spa & Spa Store
- 12 Ships Store (Boat, Kayak,  
Stand Up Paddle Board &  
Bike Rentals)
- 13 Marina
- 14 The Shoppes

### POOLS

- 15 Hotel Pool
- 16 Family Pool  
Lazy River  
Lap Pool  
Adult Guests Only Pool

### GROUPS & EVENTS

- 17 Leeward & Windward Rooms
- 18 The Pointe
- 19 Cypress Room
- 20 Starboard & Port Rooms
- 21 Spinnaker Patio

### ACCESSIBILITY

- Botanical Boardwalk Walking Trail
- Elevator Access
- Parking Lot
- Parking Garage

# Naples Bay Resort

The Boutique Waterfront Destination

## ACTIVITIES

### FAMILY POOL HOURS

Dusk to Dawn (night swimming is prohibited)

### HOTEL POOL HOURS

Dusk to Dawn (night swimming is prohibited)

### TENNIS PRO SHOP

Open Daily from 8:00 AM to 1:00 PM

Evening Hours Monday, Tuesday, Wednesday  
and Friday 4:00 PM to 7:00 PM

### SPA FACILITY

Monday-Saturday from 10:00 AM to 6:00 PM

Sunday by appointment only

### FITNESS FACILITY

Open Daily 5:00 AM to 9:00 PM

### SHIPS STORE (Marina Level)

Open Daily 8:00 AM to 6:00 PM

(Boat, Kayak, Stand Up Paddle Board & Bike Rentals)

### BUSINESS CENTER

Available 24 hours a day. Located next to hotel lobby.

## GROUPS & EVENTS

Leeward & Windward (3rd Floor Hotel)

The Pointe (Marina Level)

Cypress (Club)

Starboard & Port (Marina Level)

Spinnaker Patio (Marina Level)

## DINING AND SUNDRIES

### 1500 SOUTH RESTAURANT (Marina Level)

Celebrity Chef Art Smith, a two-time James Beard Award recipient, has launched 1500 SOUTH at Naples Bay Resort. Overlooking the bay, the menu features dishes that lend inventive international flare to Southern cooking traditions.

HOURS: Breakfast: Daily, 8am-11am; Dinner: Daily, 5pm-10pm

Bar: Daily, 4pm-11pm; Happy Hour 4pm-7pm

Dinner reservations are recommended and can be made by calling 239-774-1500.

### CATALINA CAFÉ (Marina Level)

Naples Bay Resort's Catalina Café is open and features specialty coffees and teas, along with along with daily breakfast and lunch offerings including home-made baked goods, and home-made baked goods.

Located in the Shoppes at Naples Bay Resort, overlooking the Marina. HOURS: Daily 7 AM - 6 PM

BLUEWATER BAR & GRILL (Club) Open Daily 11:00 AM to 7:00 PM (weather permitting)

### BONEFISH GRILL (Marina Level)

SHIPS STORE (Marina Level) Open Daily 8:00 AM to 6:00 PM

## COMPLIMENTARY SHUTTLE SERVICE / BEACH AMENITIES

Transfers through the property are available daily from 7:00 AM to 11:00 PM

Transfers to 5th Avenue and 3rd Street are available daily from 5:00 AM to 10:00 PM

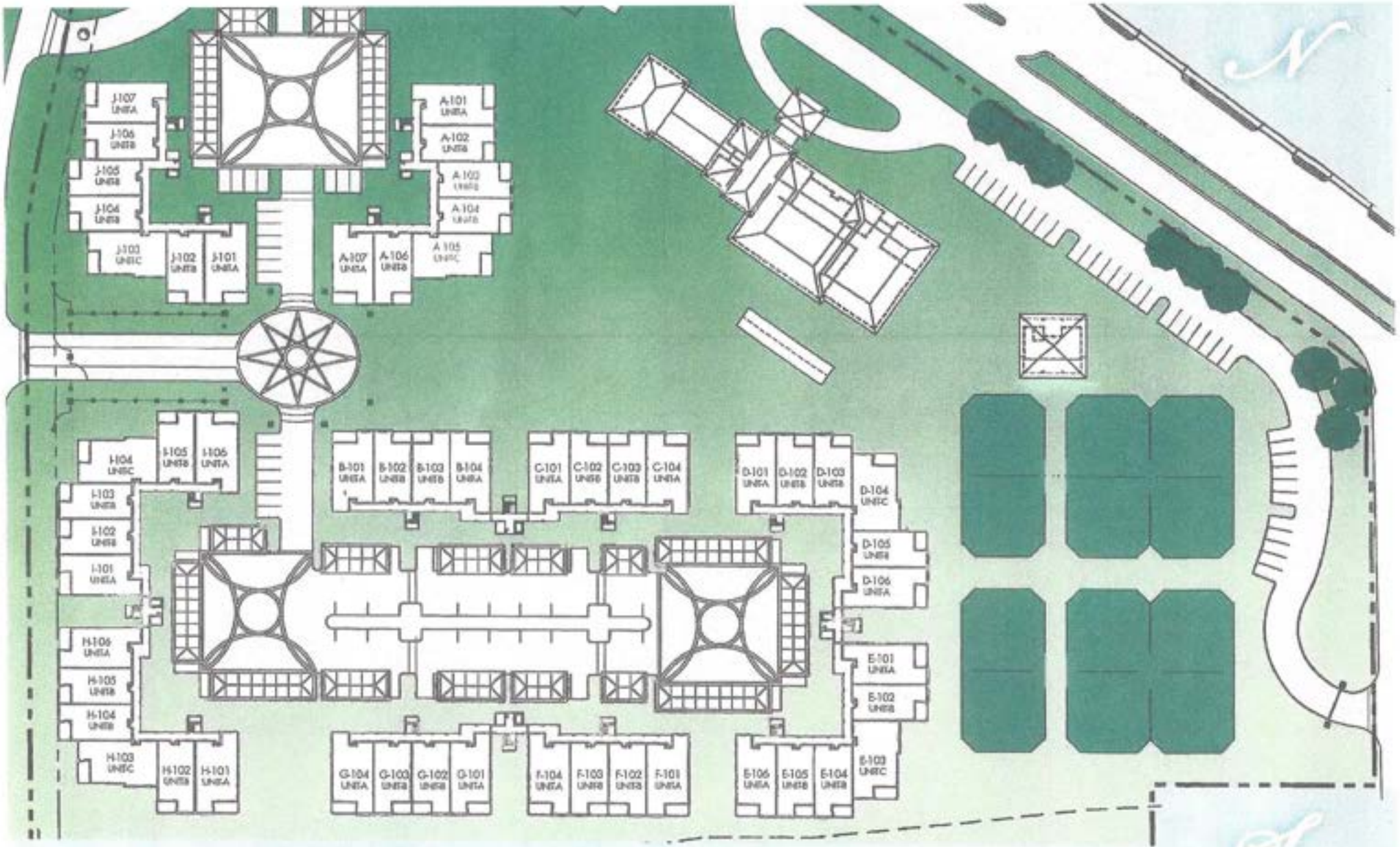
Transfers to the Beach/Pier are available daily from 8:00 AM to 6:00 PM. The shuttles leave on the hour.

Beach Chairs and Umbrellas are available on a first come, first serve basis.

NOTE: Transfers are not an automatic service and should be arranged with the Valet and/or Front Desk. Return times are to be pre-scheduled at the time of drop off. Additional transfers to off-property locations are available upon request at an additional charge.

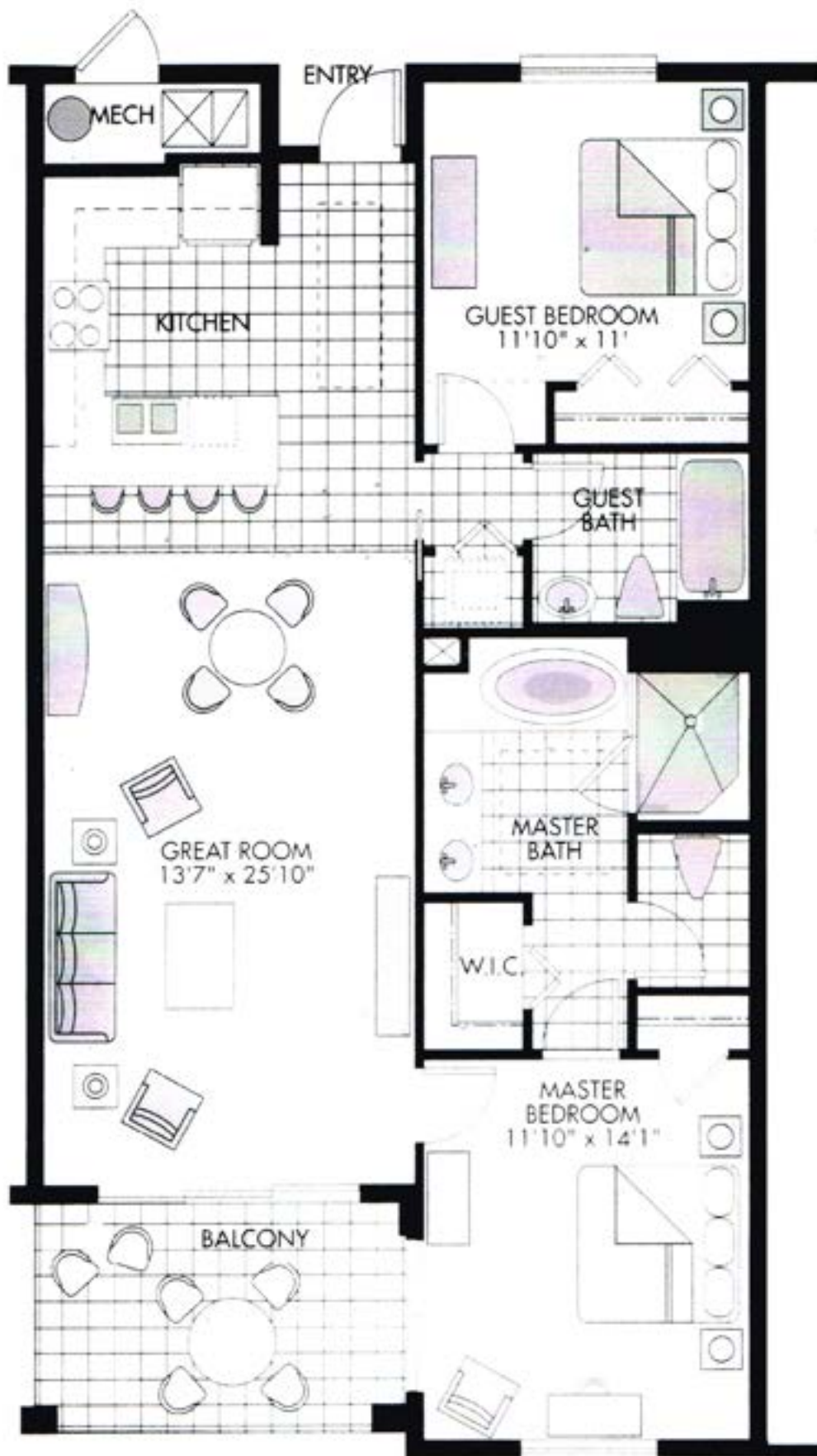
1500 Fifth Avenue South, Naples, Florida 34102 | 866.605.1199 | [NaplesBayResort.com](http://NaplesBayResort.com)

Hours of operation subject to change based upon seasonality.

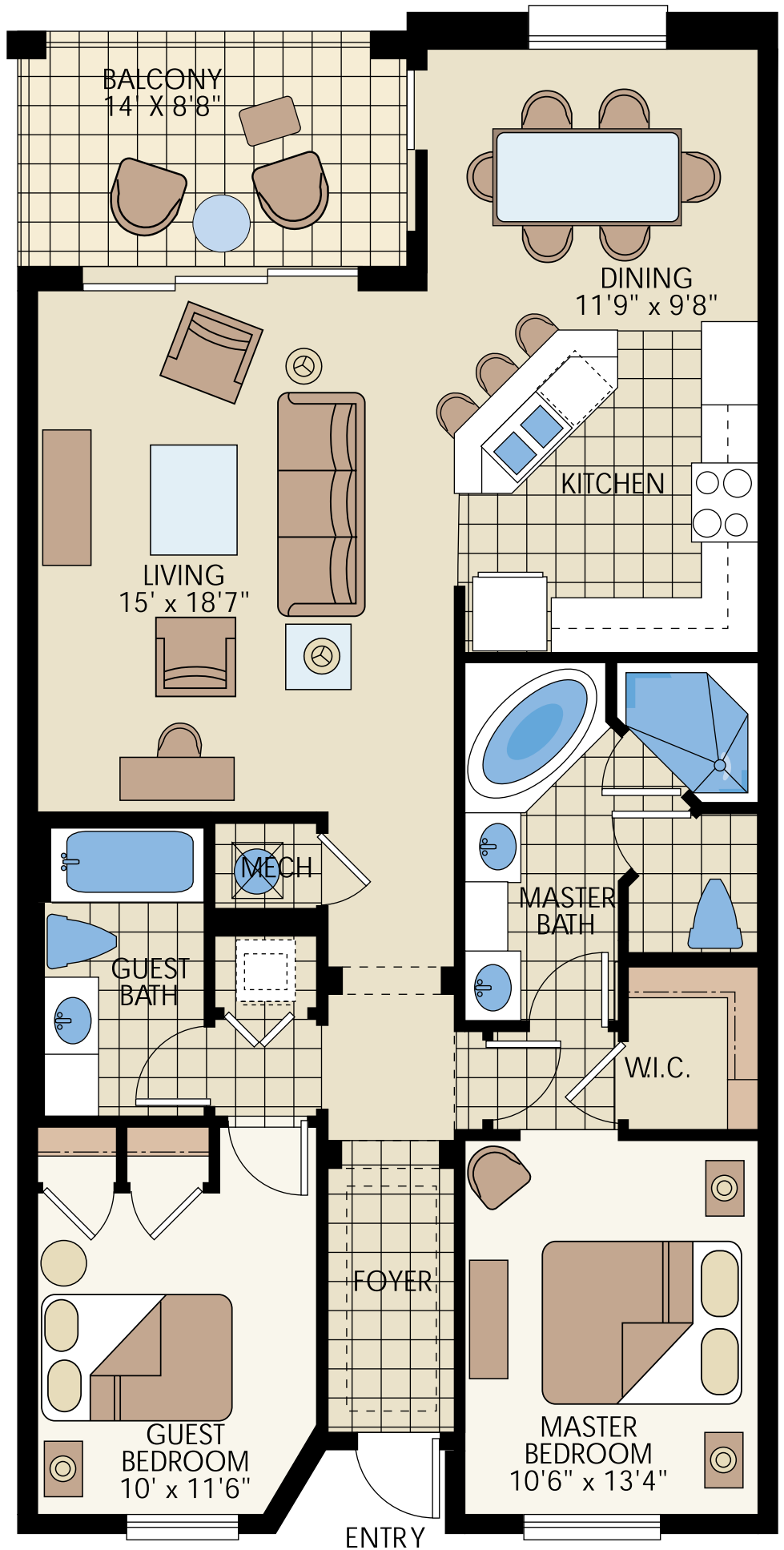


NAPLES BAY RESORT

**The Cottages**  
**Key Plan Level 1**



*Information deemed reliable but not guaranteed. All dimensions are approximate.*

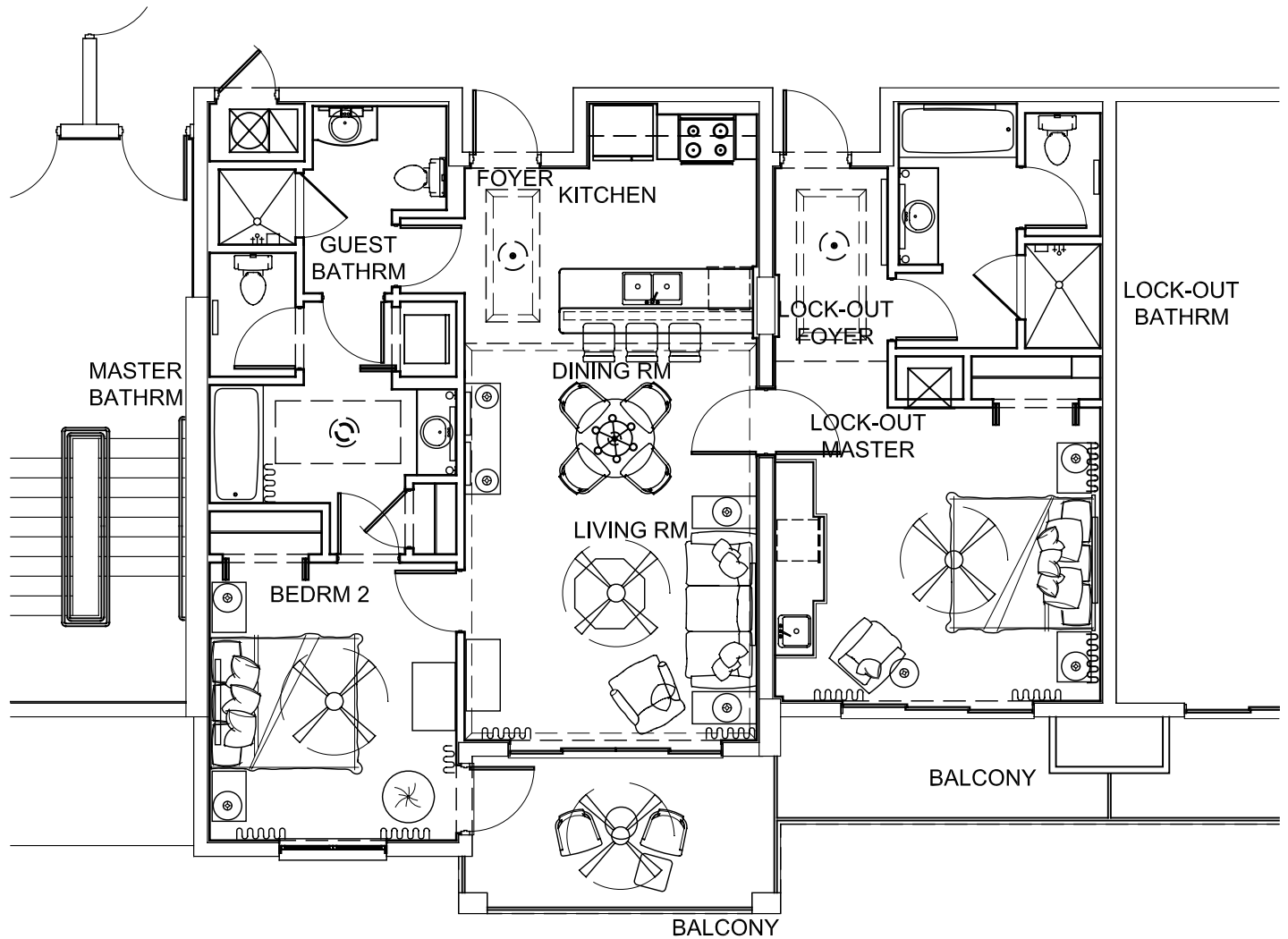


**COTTAGE B**  
TWO BEDROOMS, TWO BATHS



One Bedroom Suite





1 TROPICAL CONTROL PLAN  
 1/8"=1'-0"

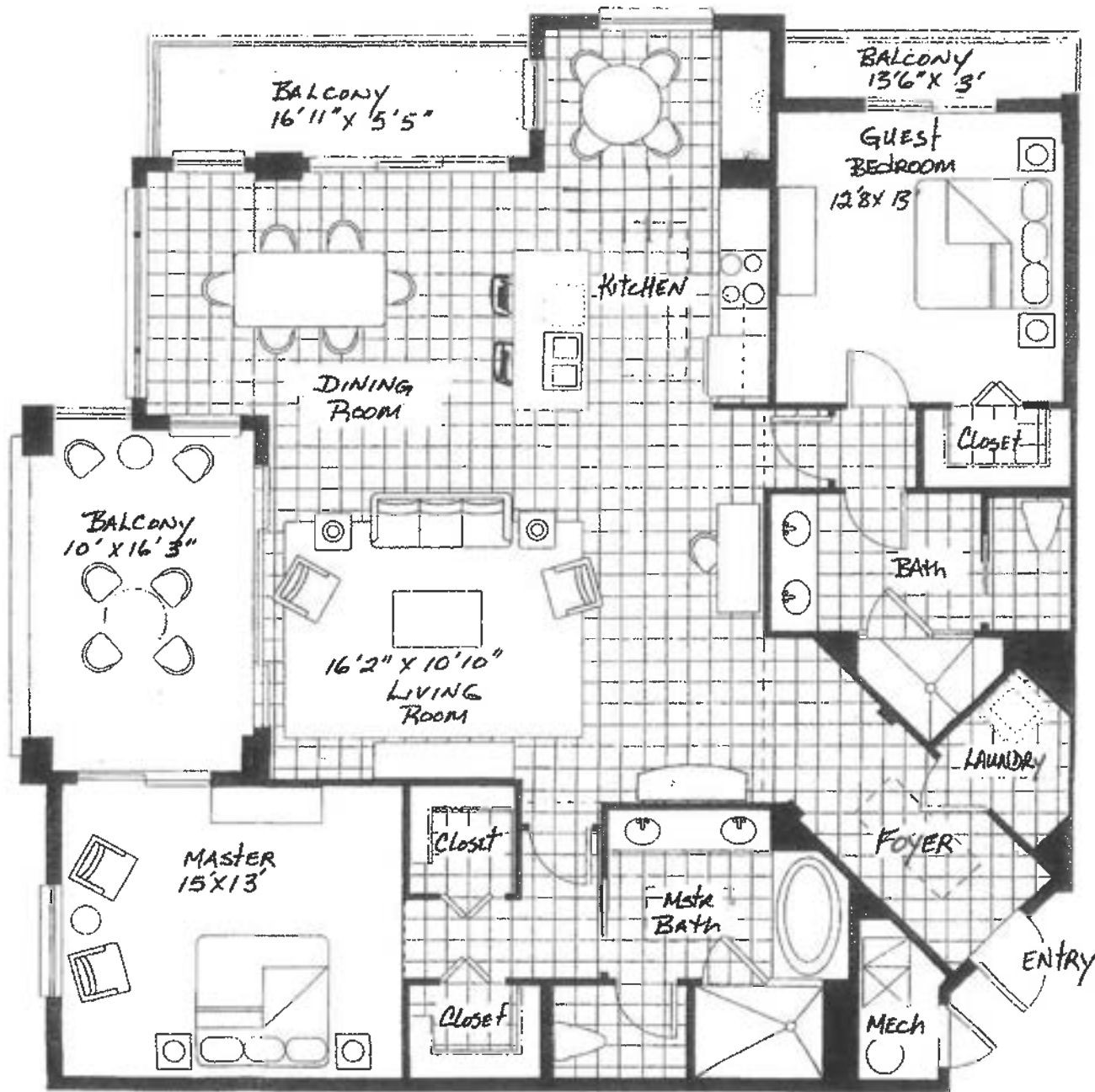
**DSI**  
 DESIGN SPECTRUM INTERNATIONAL

LICENCE # AR 0016071  
 5000 SW 75 AVE SUITE 102 MIAMI, FL. 33134 (305)665-2494

Naples Bay  
 Resort  
 UNIT F

|           |  |      |       |     |                |
|-----------|--|------|-------|-----|----------------|
| Revisions |  | Date | Scale | Job | Sheet<br>ID-1F |
|           |  |      |       |     |                |









**THE RESIDENCES UNIT C4 - 312**

|                 |               |
|-----------------|---------------|
| A/C LIVING AREA | 2,660 SQ. FT. |
| BALCONIES       | 380 SQ. FT.   |
| GARAGE          | 542 SQ. FT.   |
| TOTAL AREA      | 3,582 SQ. FT. |

All dimensions are approximate.



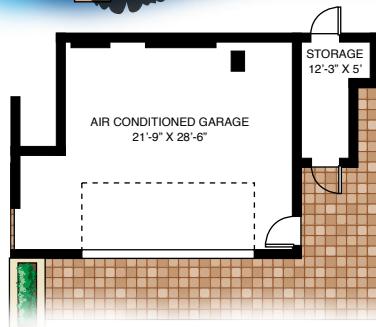
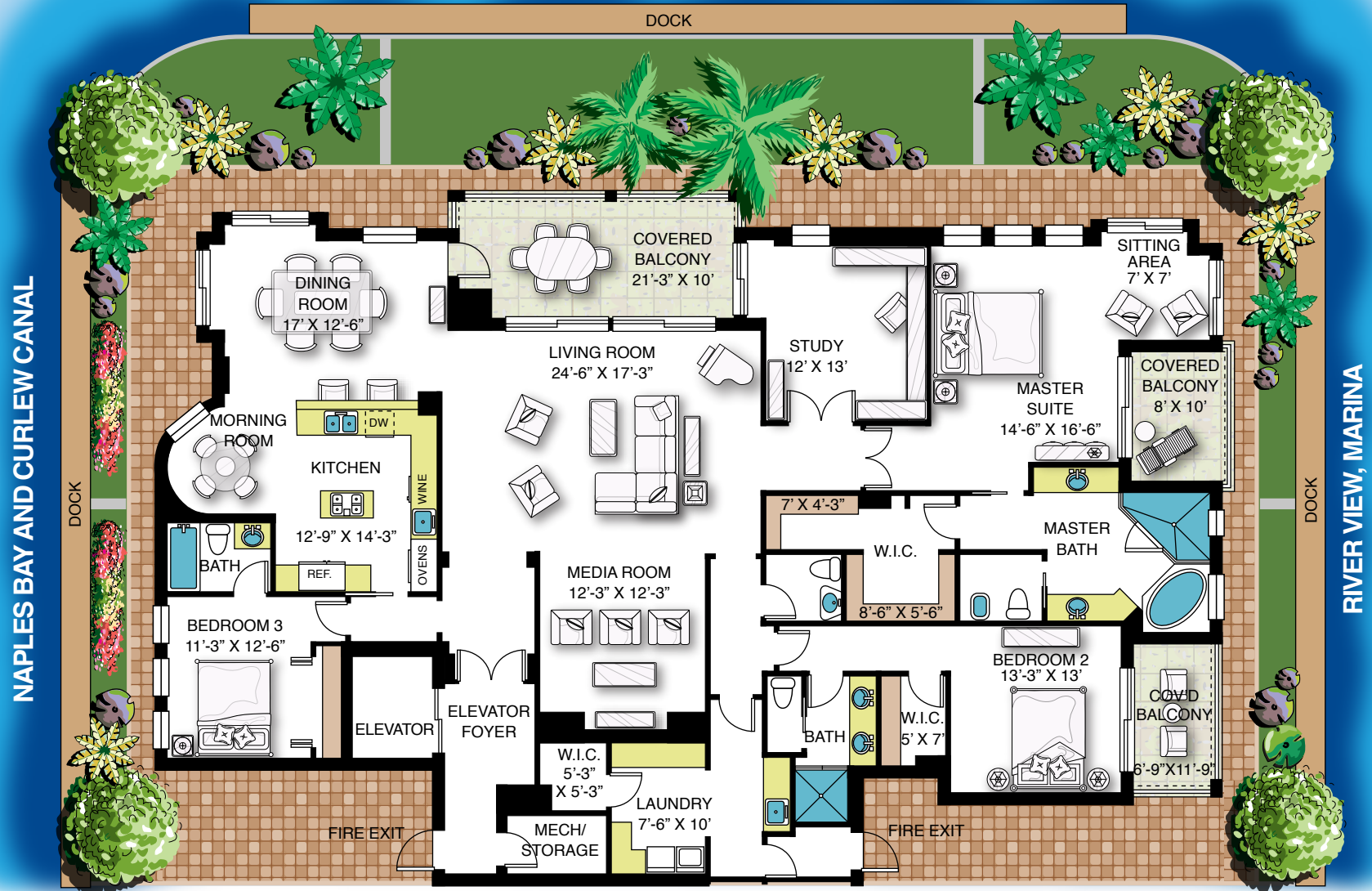
**UNIT C2 - 307 BUILDING C  
THREE BEDROOMS,  
THREE & ONE HALF BATHS**

|                   |                      |
|-------------------|----------------------|
| A/C LIVING AREA   | 3,100 SQ. FT.        |
| BALCONIES         | 333 SQ. FT.          |
| GARAGE            | 632 SQ. FT.          |
| <b>TOTAL AREA</b> | <b>4,065 SQ. FT.</b> |

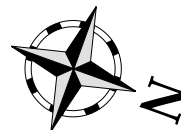
All dimensions are approximate.

# RESIDENCE D201

NAPLES BAY

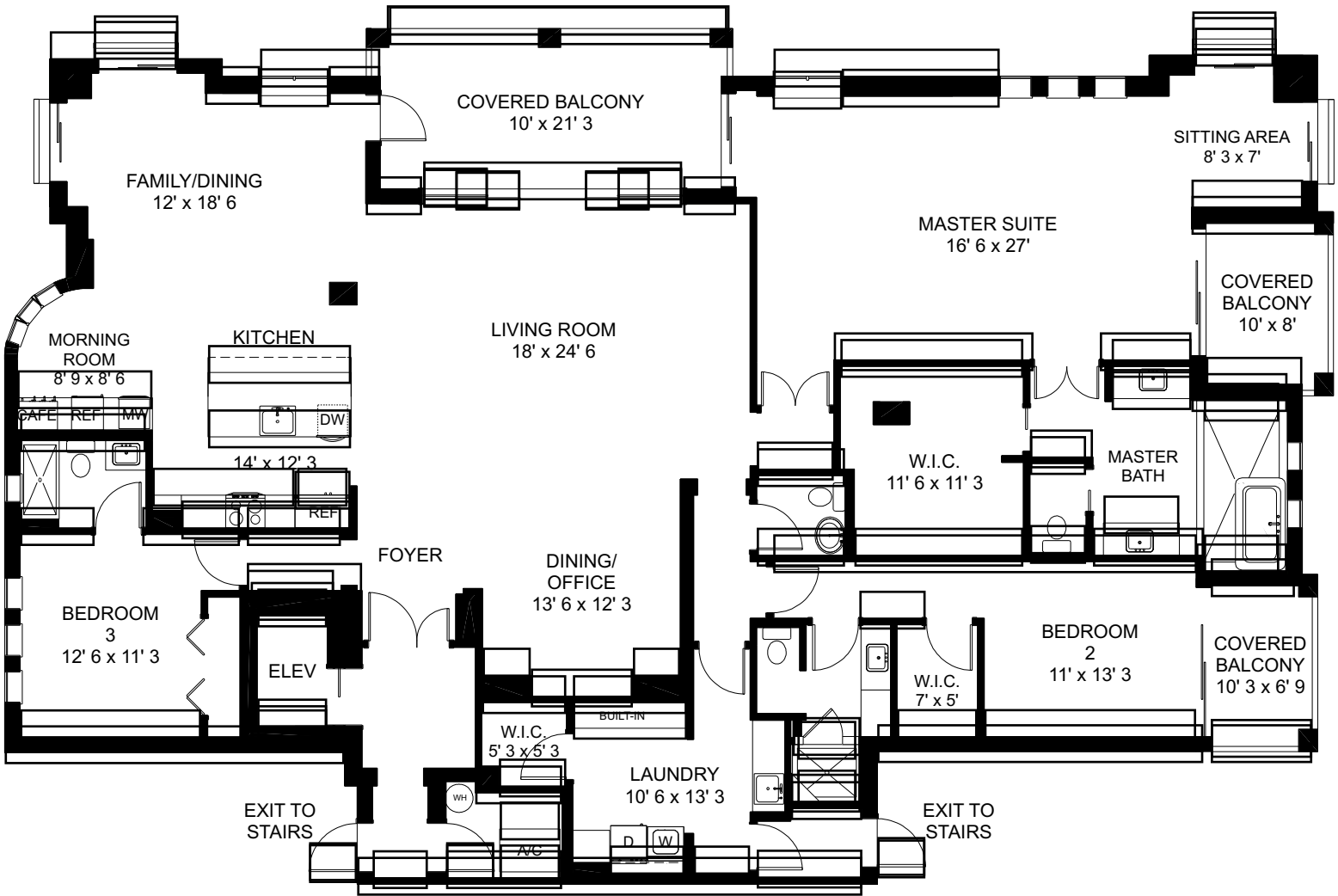


**GARAGE  
DETAIL**



**1540 Fifth Avenue South  
Naples, FL 34102  
RESIDENCE D201**

|                        |                     |
|------------------------|---------------------|
| <b>TOTAL UNDER AIR</b> | <b>3260 sq. ft.</b> |
| Covered Balconies      | 368 sq. ft.         |
| Garage                 | 627 sq. ft.         |
| Storages               | 127 sq. ft.         |
| <b>TOTAL AREA</b>      | <b>4382 sq. ft.</b> |



|                   |              |
|-------------------|--------------|
| TOTAL LIVING AREA | 3276 sq. ft. |
| Covered Balconies | 361 sq. ft.  |
| <hr/>             |              |
| TOTAL AREA        | 3637 sq. ft. |



FIRST FLOOR



SECOND FLOOR



THIRD FLOOR

**BUILDING C**  
**THE RESIDENCES UNIT C1 OPTION**  
**THREE BEDROOMS,**  
**THREE & ONE HALF BATHS**

|                   |                      |
|-------------------|----------------------|
| A/C LIVING AREA   | 3,286 SQ. FT.        |
| BALCONIES         | 753 SQ. FT.          |
| GARAGE            | 645 SQ. FT.          |
| <b>TOTAL AREA</b> | <b>4,684 SQ. FT.</b> |