

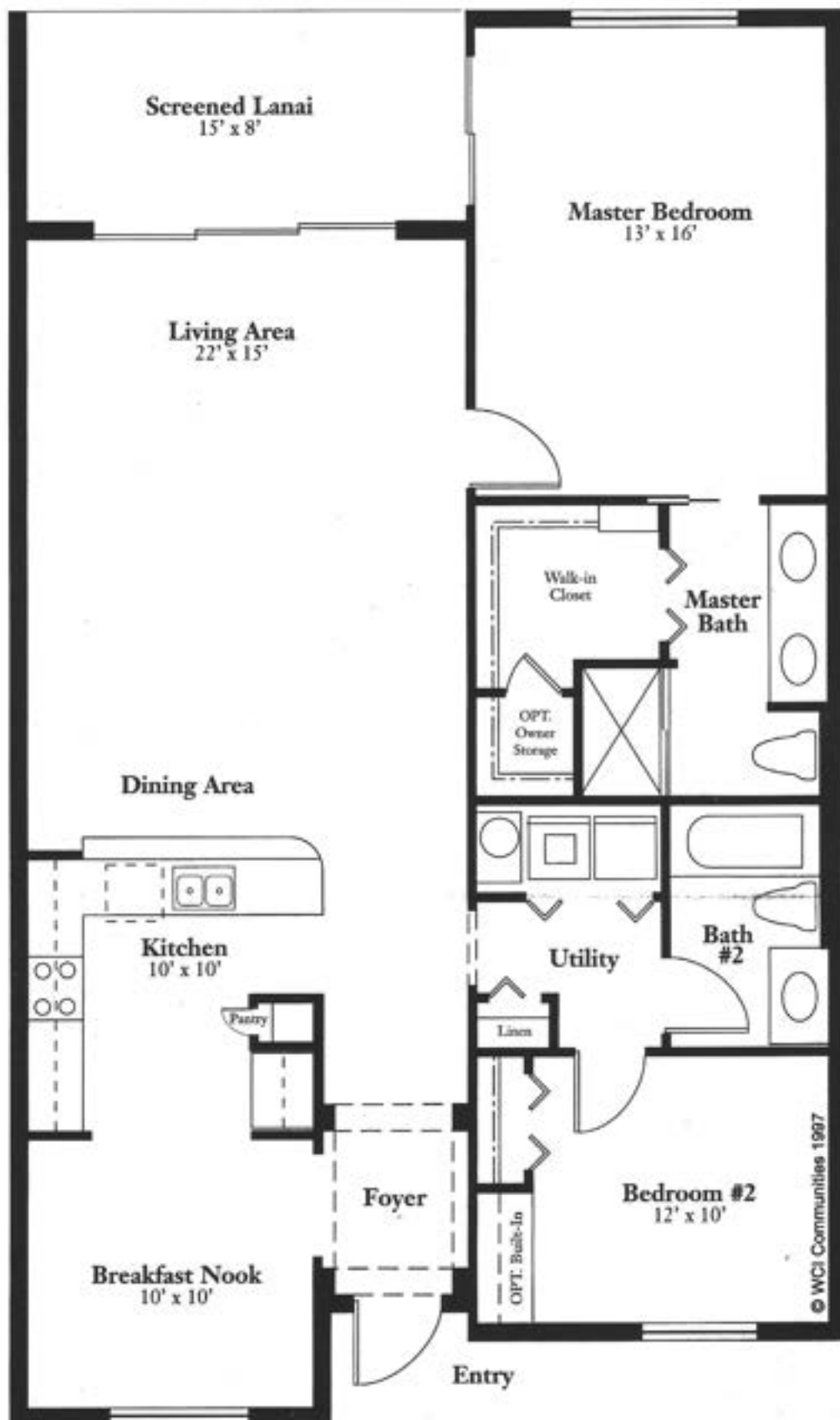
## Floor Plans

These floor plans have been assembled as a resource for you. They may not be inclusive of every home in the community.

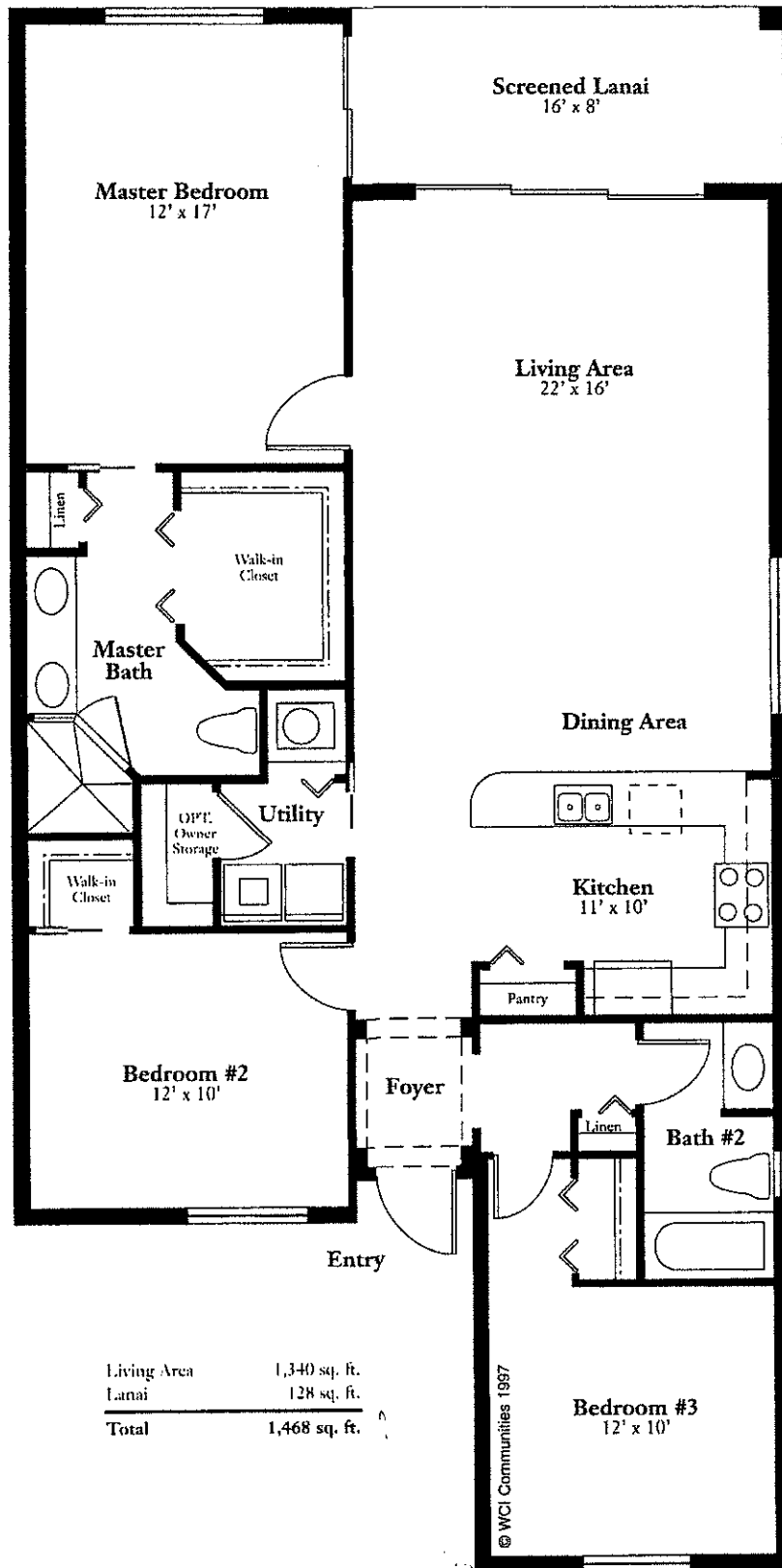
Please note that over time, owners may make modifications to spaces that may not be captured in these original floor plans.

Renderings are not a guarantee of space measurement. Interested parties should verify through their own secured services.

Living Area	1,225 sq. ft.
Lanai	120 sq. ft.
<b>Total</b>	<b>1,345 sq. ft.</b>

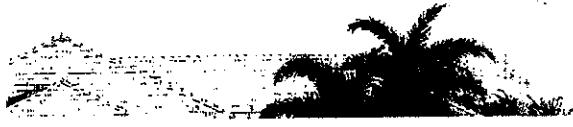


© WCI Communities 1997



Living Area	1,340 sq. ft.
Lanai	128 sq. ft.
<b>Total</b>	<b>1,468 sq. ft.</b>

© WCI Communities 1997





Living Area	1,515 sq. ft.
Lanai	130 sq. ft.
Entry	70 sq. ft.
<b>Total</b>	<b>1,715 sq. ft.</b>

# The Dolphin

First Floor

Living Area	1,537 sq. ft.
Lanai	123 sq. ft.
Entry	80 sq. ft.
<b>Total</b>	<b>1,740 sq. ft.</b>

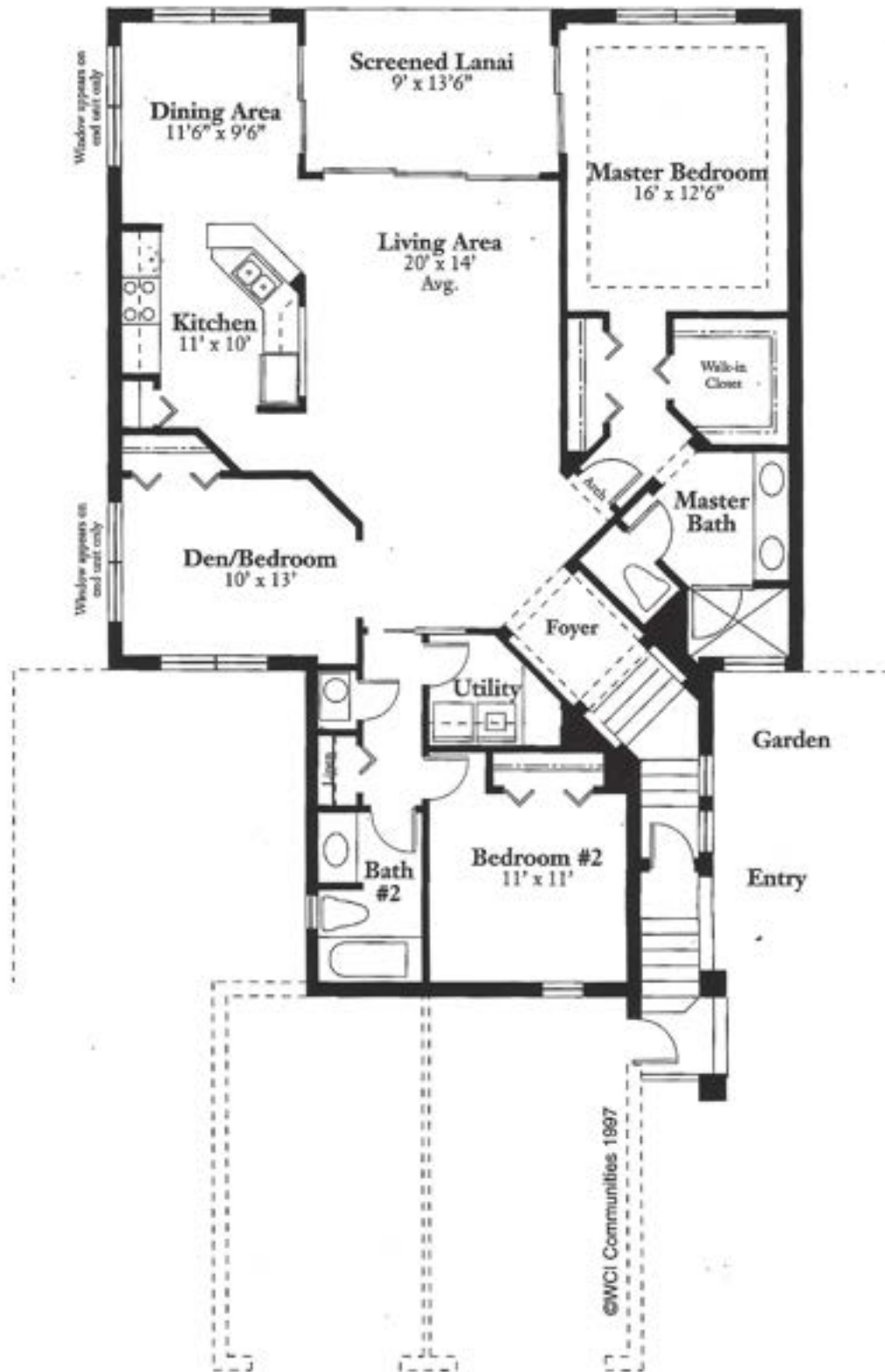


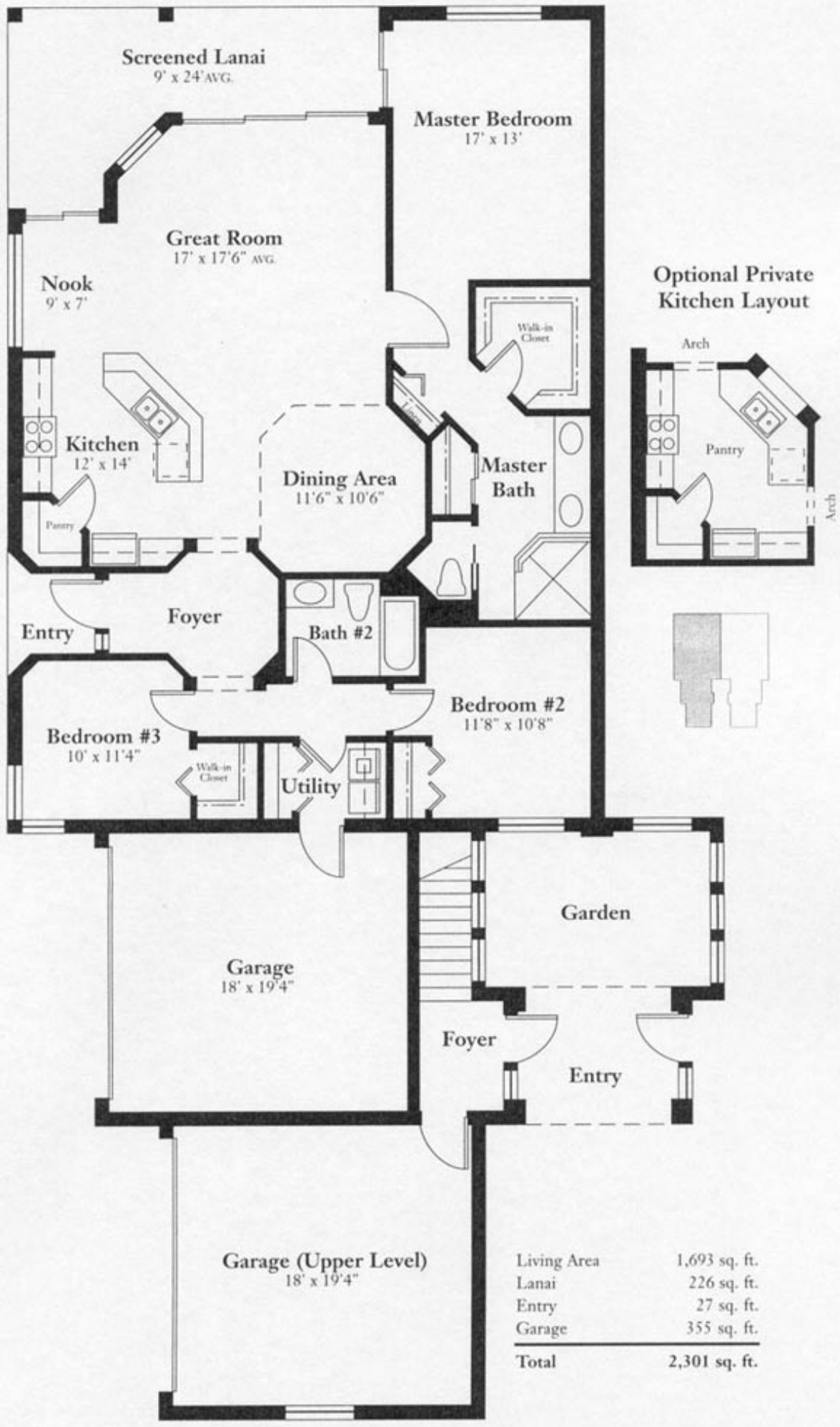
©WCI Communities 1997

# The Marlin

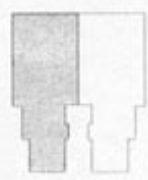
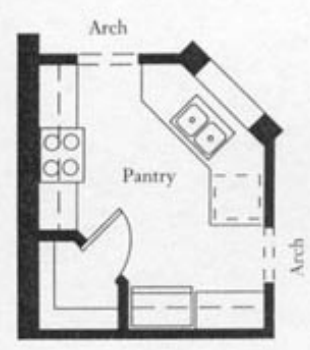
Second Floor

Living area	1,669 sq. ft.
Lanai	123 sq. ft.
Entry	56 sq. ft.
<b>Total</b>	<b>1,848 sq. ft.</b>





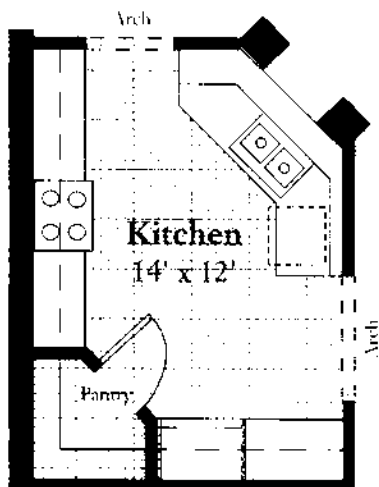
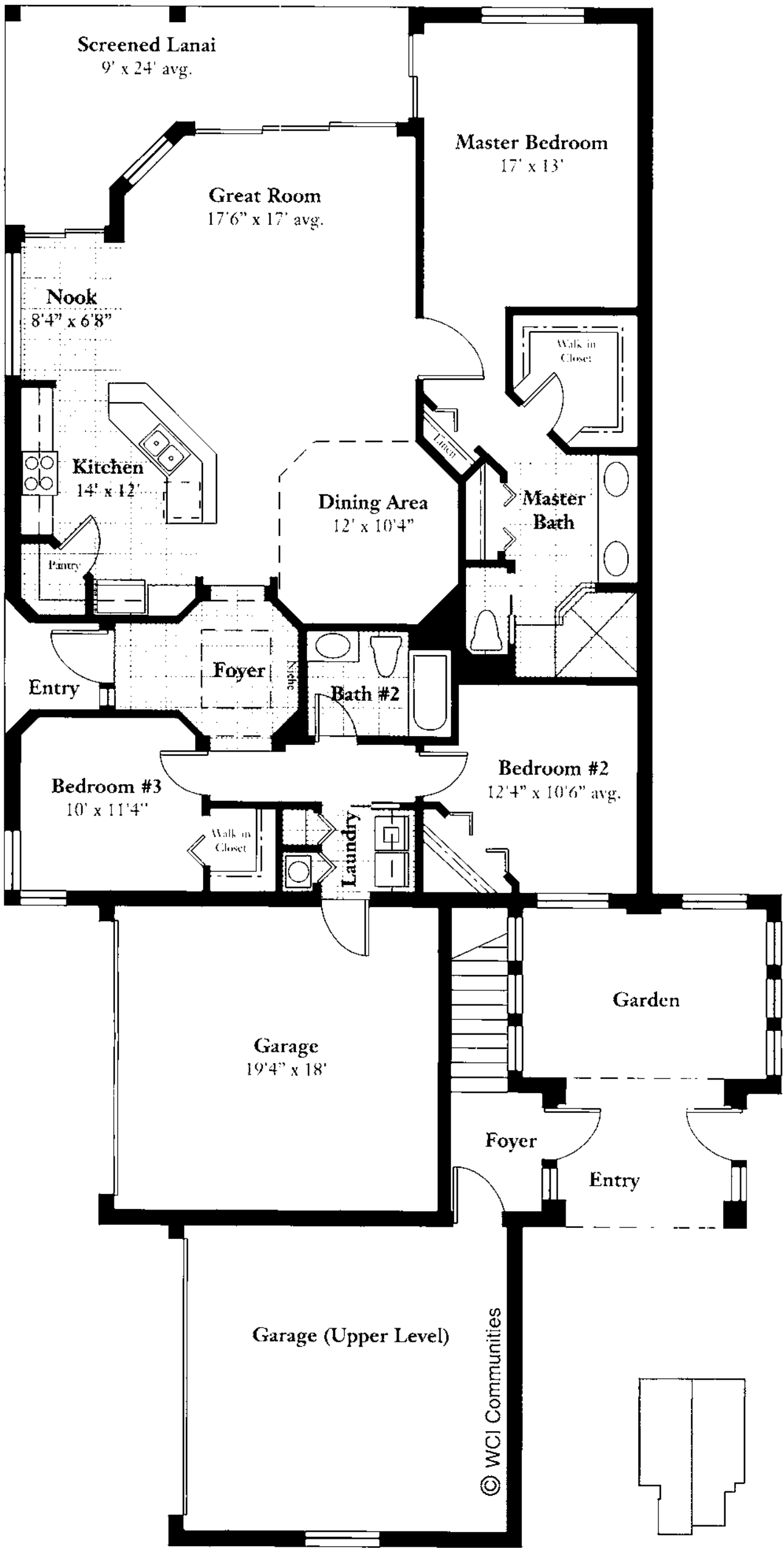
**Optional Private Kitchen Layout**



Living Area	1,693 sq. ft.
Lanai	226 sq. ft.
Entry	27 sq. ft.
Garage	355 sq. ft.
<b>Total</b>	<b>2,301 sq. ft.</b>

# The Regatta

First Floor



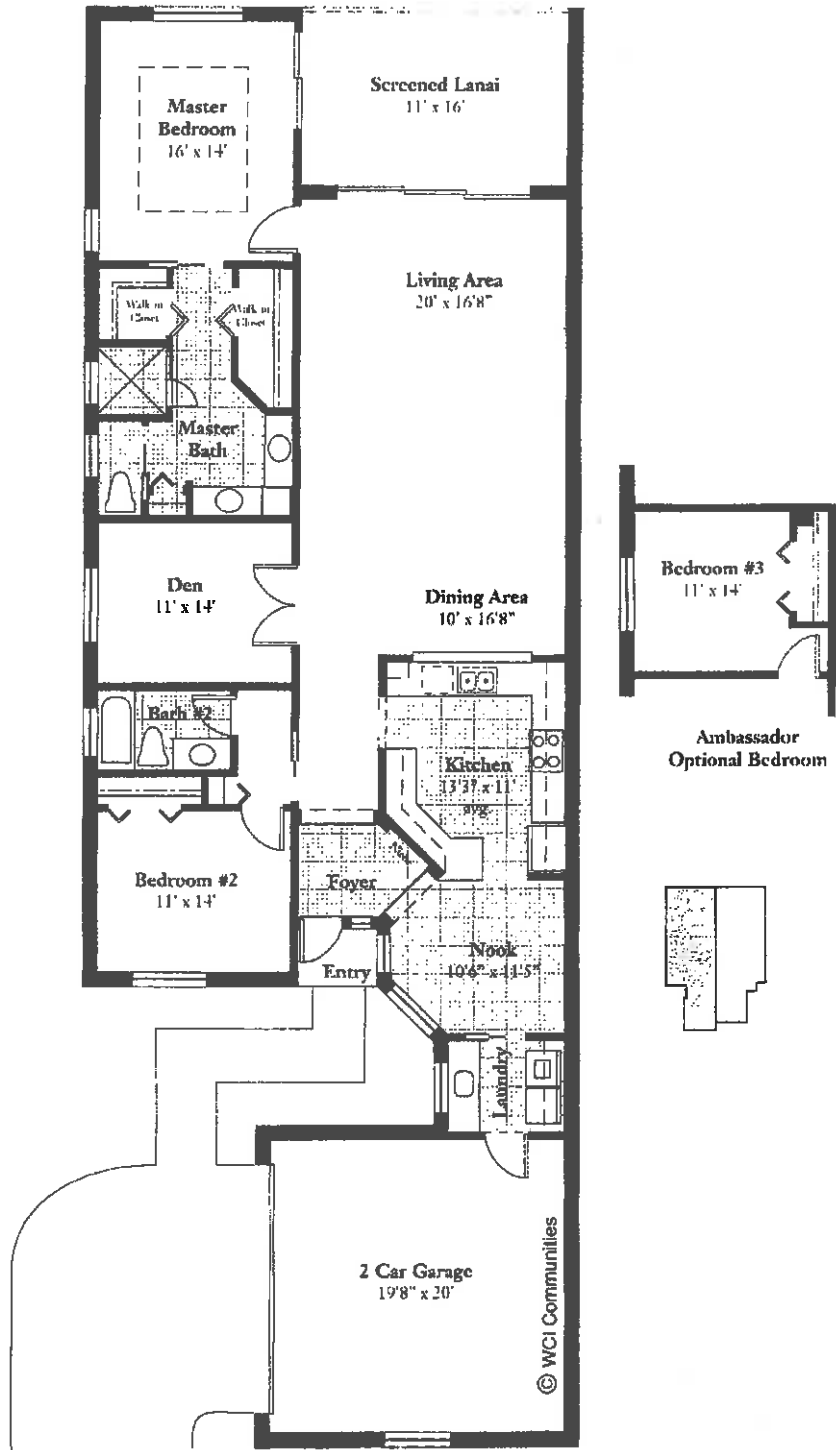
Optional Private Kitchen Layout

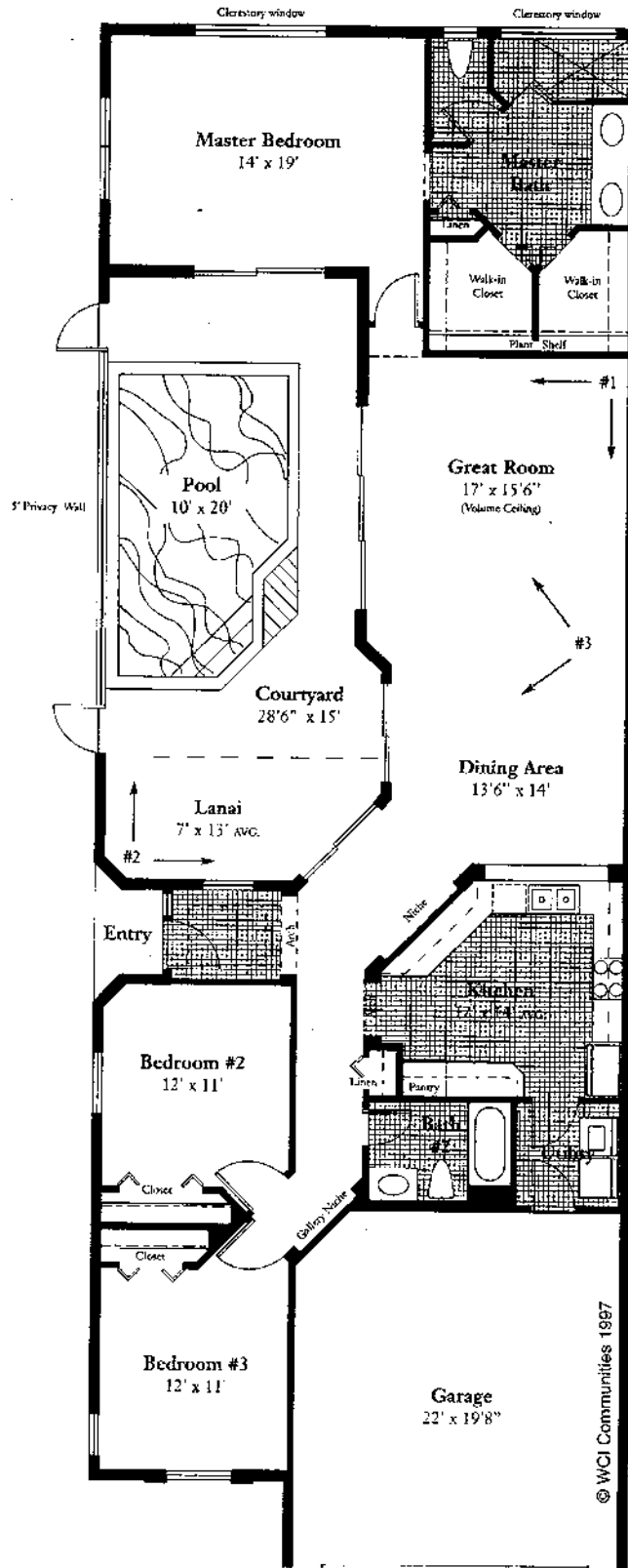
Living Area	1,693 sq. ft.
Lanai	226 sq. ft.
Entry	27 sq. ft.
Garage	355 sq. ft.
<b>Total</b>	<b>2,301 sq. ft.</b>





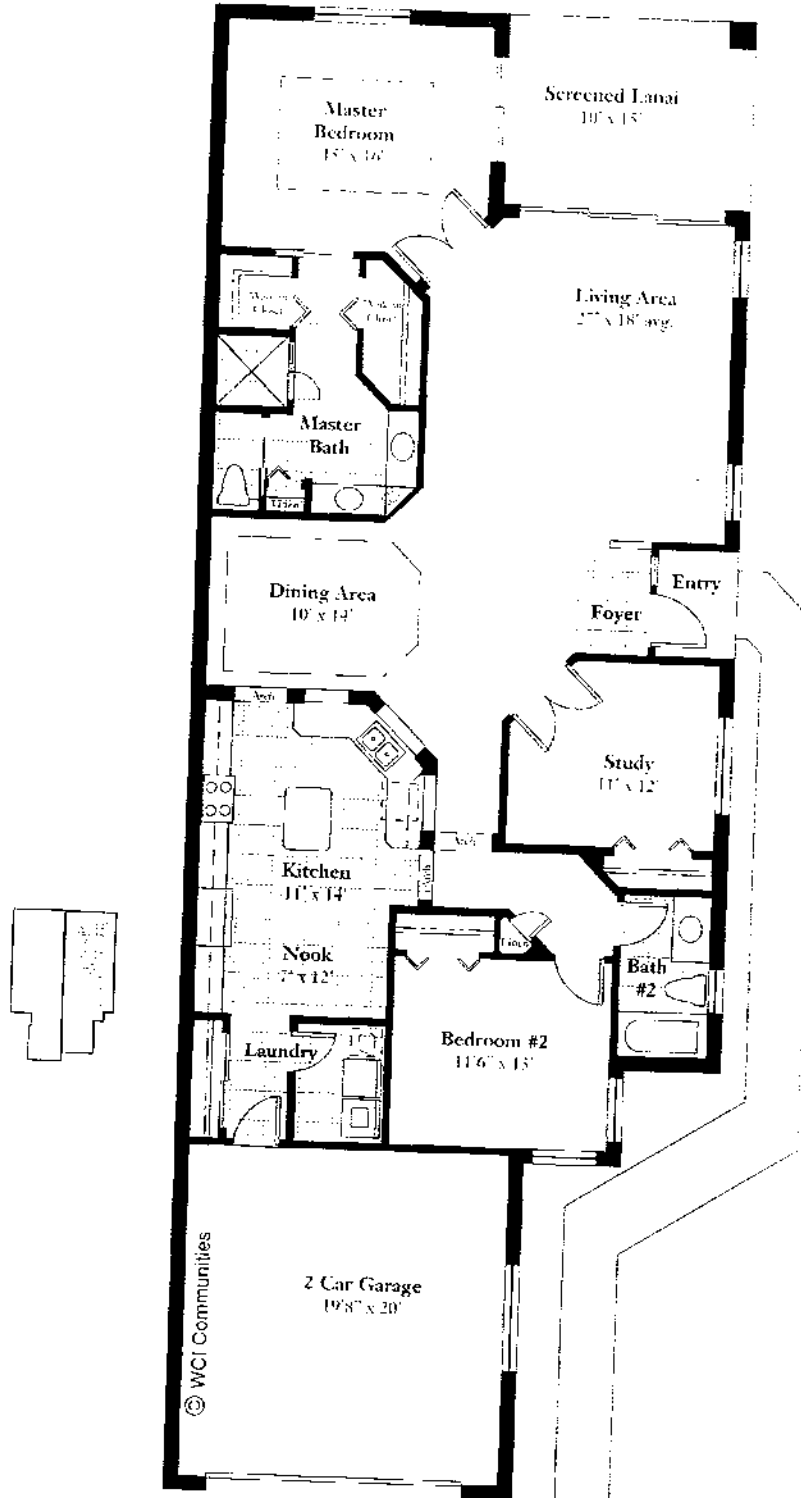
*The Ambassador*





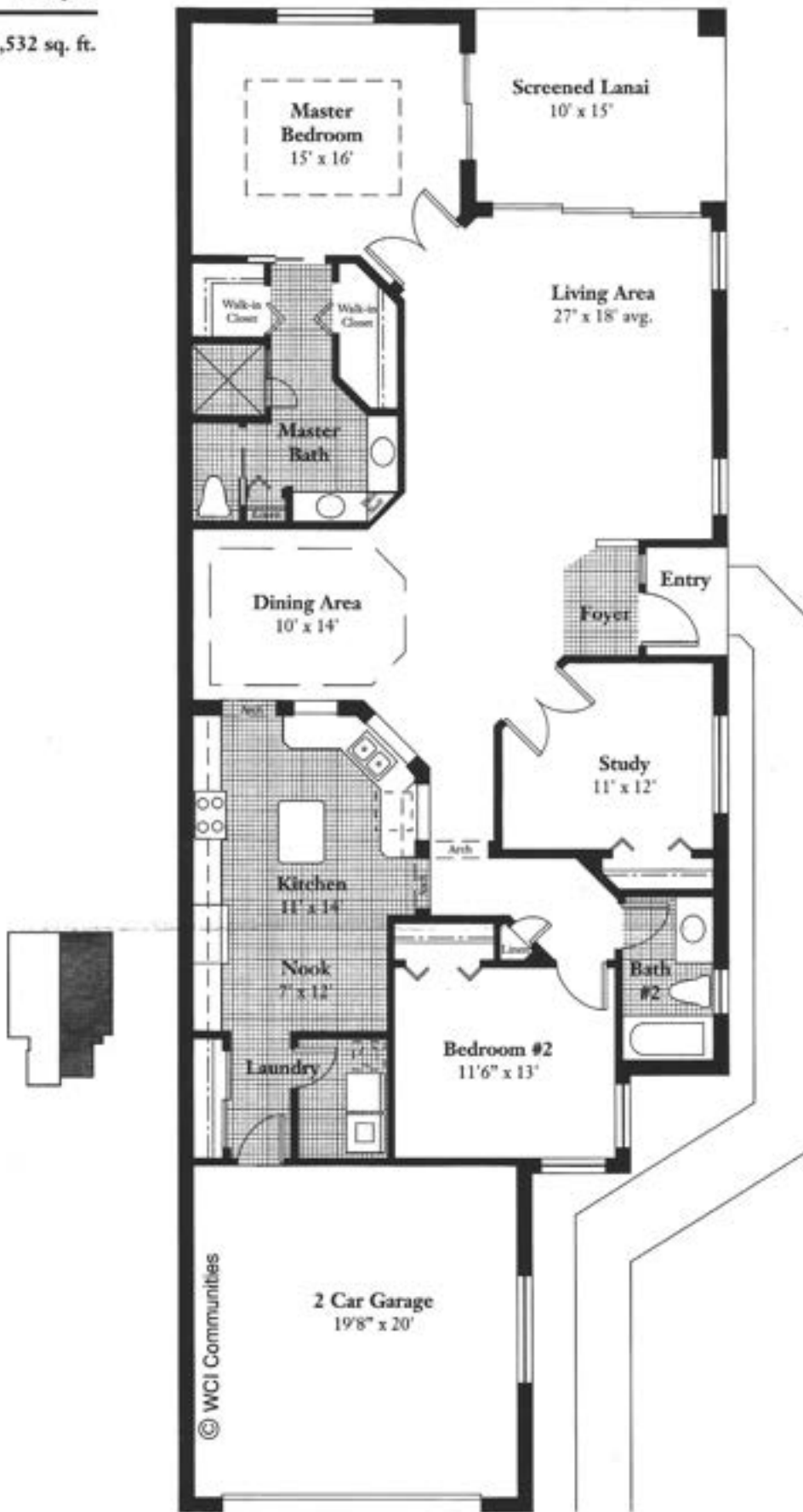
© WCI Communities 1997

*The Commodore*

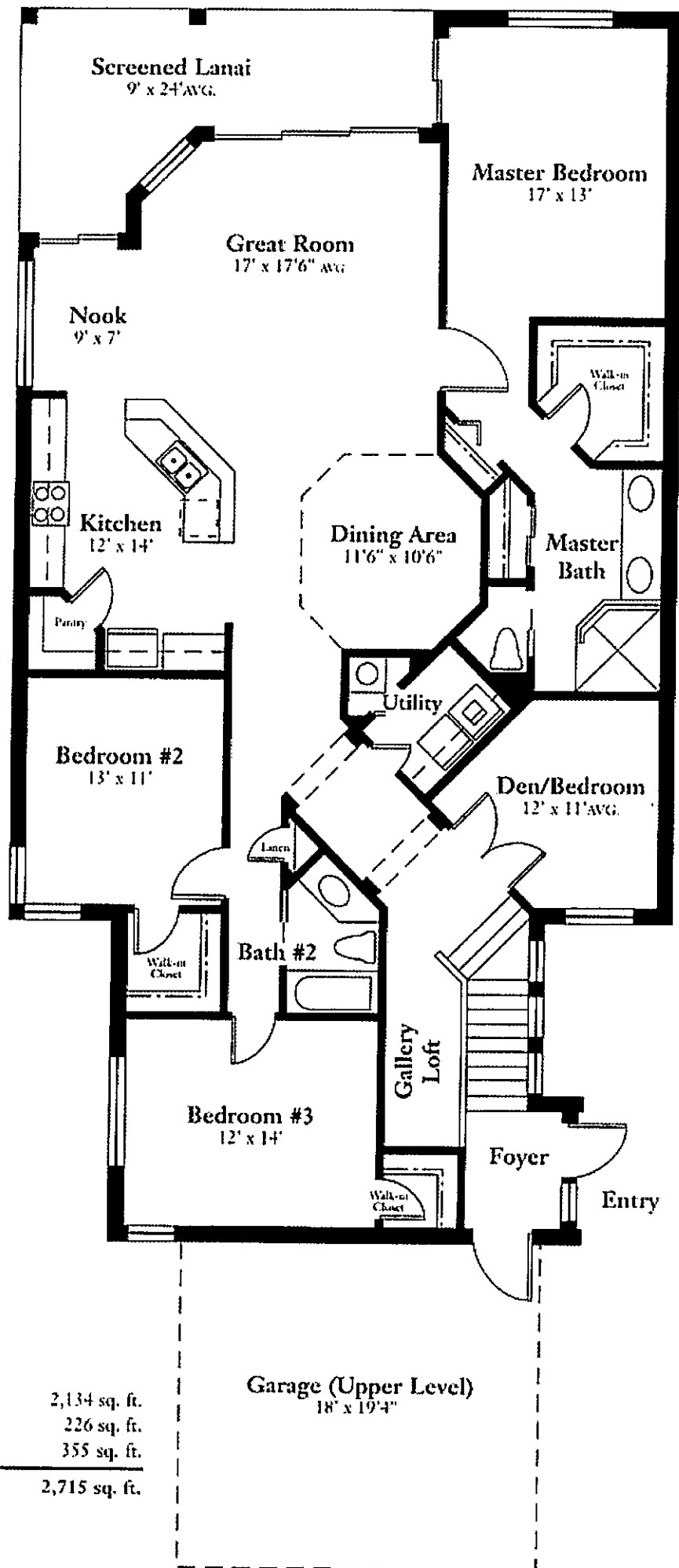


*The Commodore*

Living Area	1,955 sq. ft.
Lanai	150 sq. ft.
Entry	40 sq. ft.
Garage	427 sq. ft.
<hr/>	
Total	2,532 sq. ft.



© WCI Communities



Living Area	2,134 sq. ft.
Lanai	226 sq. ft.
Garage	355 sq. ft.
<b>Total</b>	<b>2,715 sq. ft.</b>