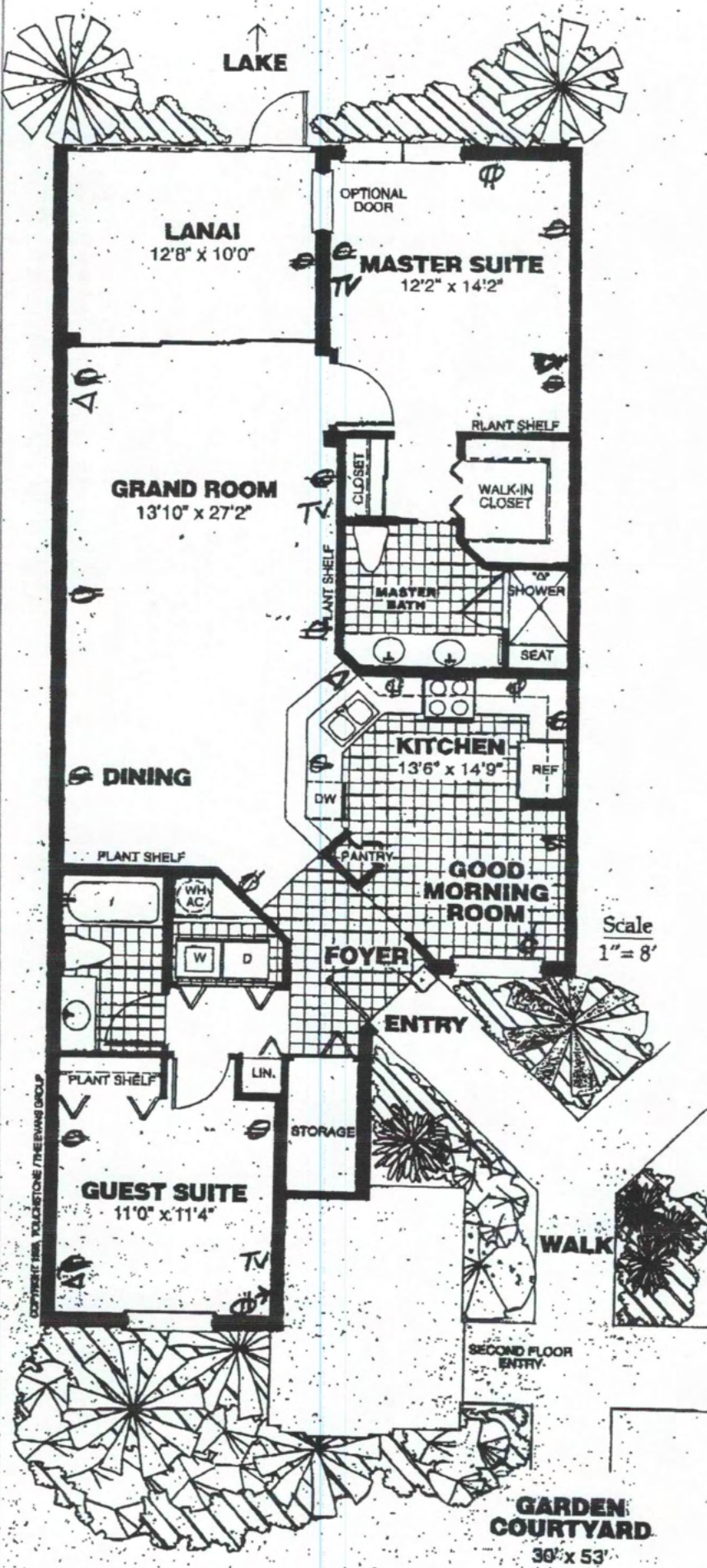


Floor Plans

These floor plans have been assembled as a resource for you. They may not be inclusive of every home in the community.

Please note that over time, owners may make modifications to spaces that may not be captured in these original floor plans.

Renderings are not a guarantee of space measurement. Interested parties should verify through their own secured services.

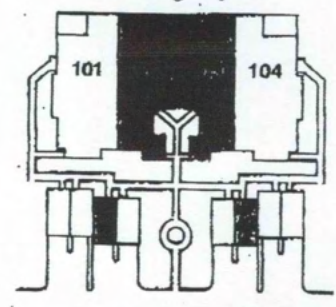


GulfHome I

Ground Floor
Two Bedroom, Two Bath
Coach Home

Living Area	1,282 sq. ft.
Lanai	128 sq. ft.
Detached Garage	216 sq. ft.
Total	1,626 sq. ft.

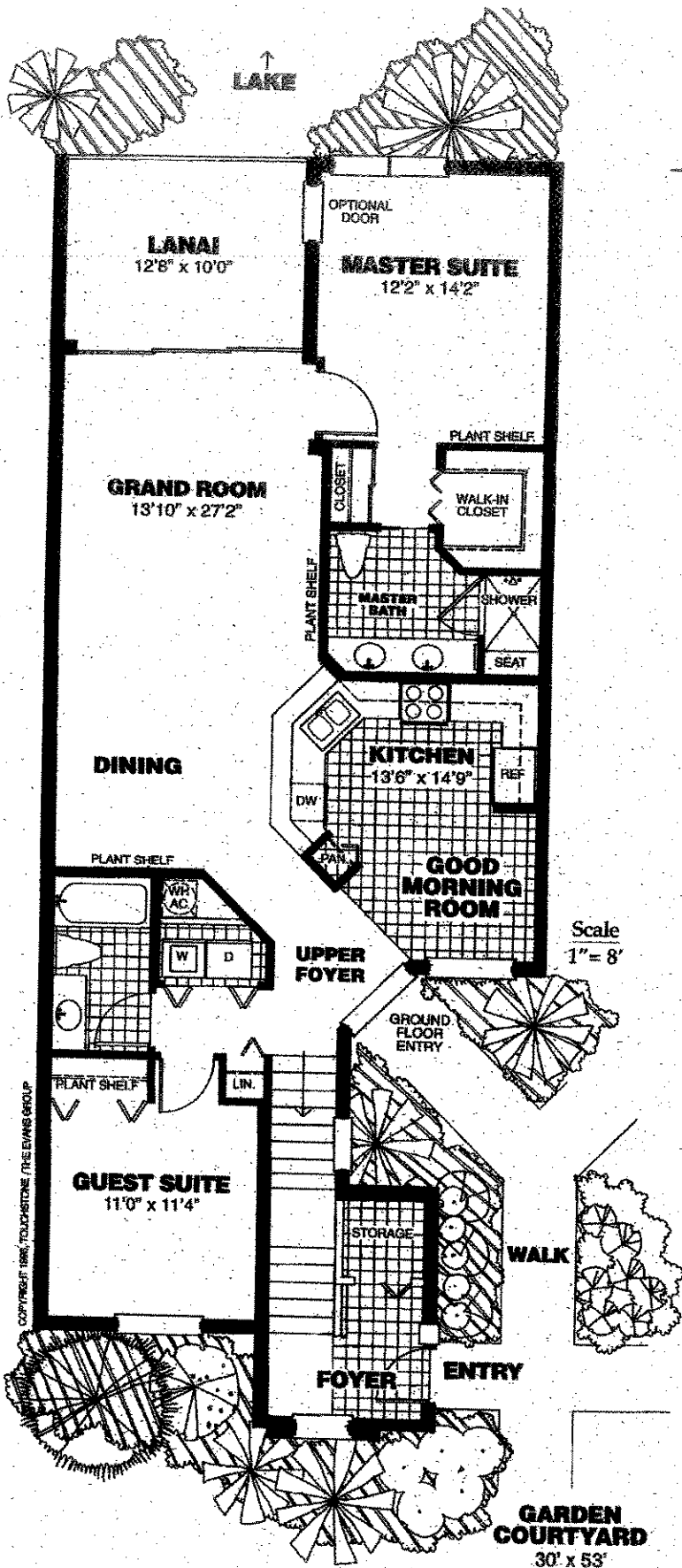
Building Layout



Shown here is unit #102. Unit #103 is reverse image of same floorplan.

Scale
1" = 8'

All dimensions are approximate. The developer reserves the right to change and alter all materials specifications, features, dimensions and designs without notice.

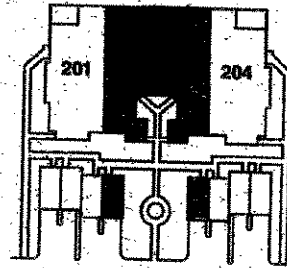


GulfHome II

Second Floor
Two Bedroom, Two Bath
Garden Condo

Living Area	1,404 sq. ft.
Lanai	128 sq. ft.
Detached Garage	216 sq. ft.
Total	1,748 sq. ft.

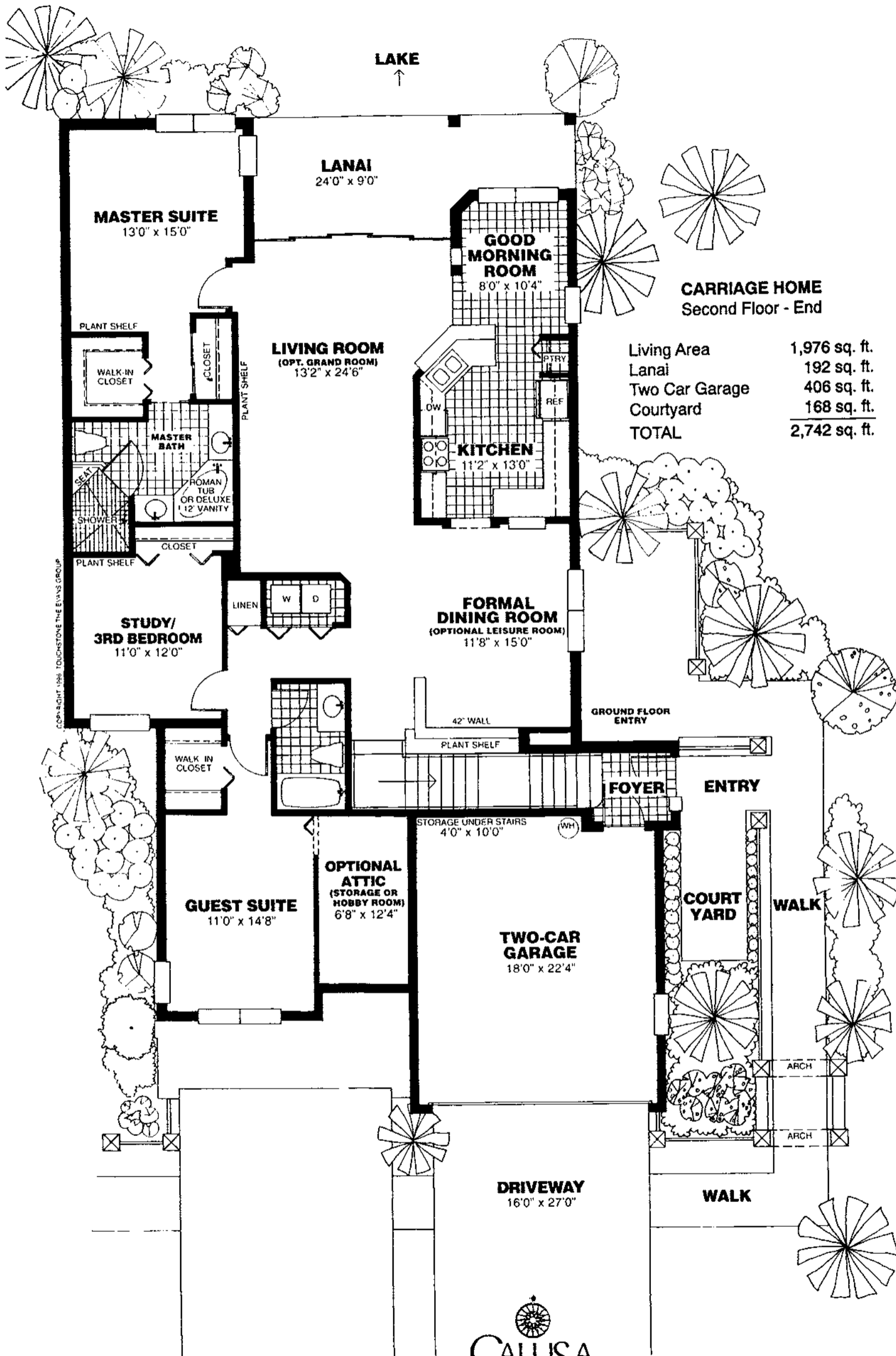
Building Layout



Shown here is unit #202. Unit #203 is reverse image of same floorplan.

COPYRIGHT 1996, TOUCHSTONE THE EVANS GROUP

All dimensions are approximate. The developer reserves the right to change and alter all materials specifications, features, dimensions and designs without notice.



CARRIAGE HOME
Second Floor - End

Living Area	1,976 sq. ft.
Lanai	192 sq. ft.
Two Car Garage	406 sq. ft.
Courtyard	168 sq. ft.
TOTAL	2,742 sq. ft.

COPYRIGHT 1996 TOUCHSTONE THE EVANS GROUP



LAKE
↑

MASTER SUITE
13'0" x 15'0"

LANAI
24'0" x 9'0"

GOOD MORNING ROOM
8'0" x 10'4"

CARRIAGE HOME
Ground Floor - End

LIVING ROOM
(OPT. GRAND ROOM)
13'2" x 24'6"

Living Area	1,630 sq. ft.
Lanai	192 sq. ft.
Two Car Garage	378 sq. ft.
Courtyard	158 sq. ft.
TOTAL	2,358 sq. ft.

PLANT SHELF

WALK-IN CLOSET

CLOSET

PLANT SHELF

MASTER BATH

ROMAN TUB
OR DELUXE
12" VANITY

PLANT SHELF

CLOSET

GUEST SUITE
11'0" x 12'0"

LINEN

W

D

KITCHEN
11'2" x 12'0"

DW

REF

PTRY

FORMAL DINING ROOM
(OPTIONAL 3RD BEDROOM
OR LEISURE ROOM)
11'8" x 12'4"

36" WALL

COURT YARD

FOYER

ENTRY

STORAGE

WH

TWO-CAR GARAGE
18'0" x 21'0"

SECOND FLOOR ENTRY

WALK

ARCH

COPYRIGHT 1994 TOUCHSTONE THE EVANS GROUP

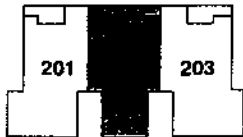


ClubHome II

Second Floor
Three Bedroom + Leisure Room
Carriage Home

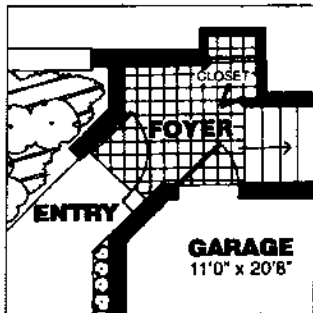
Living Area	1,892 sq. ft.
Lanai	196 sq. ft.
Garage	228 sq. ft.
Courtyard	378 sq. ft.
Total	2,694 sq. ft.
(Attic Option)	+96 sq. ft.

Building Layout

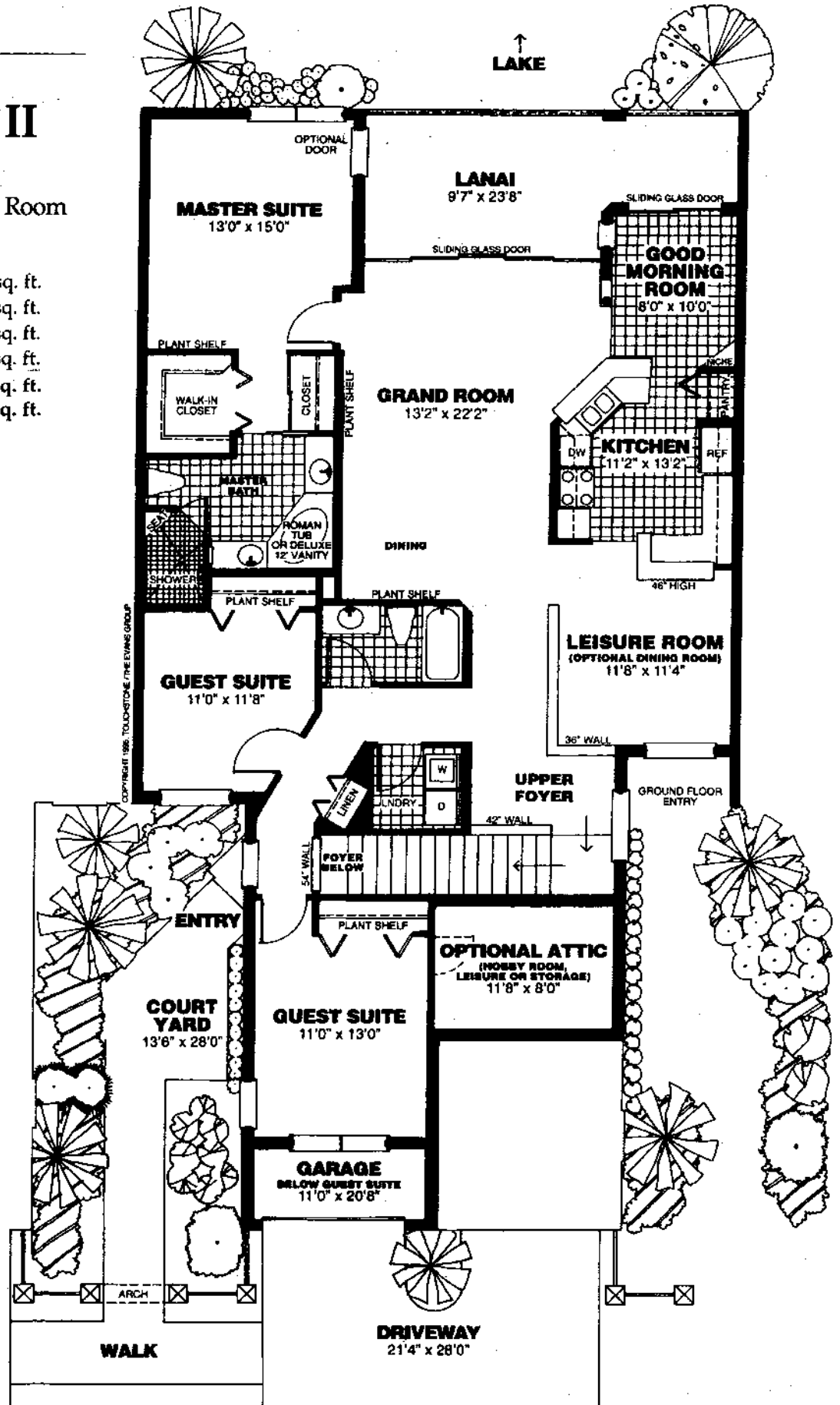


Shown here is unit #202.

Entry to Residence from First Floor



Scale
1" = 9'



All dimensions are approximate. The developer reserves the right to change and alter all materials specifications, features, dimensions and designs without notice.



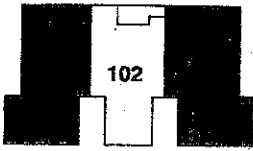
↑
LAKE

ClubHome III

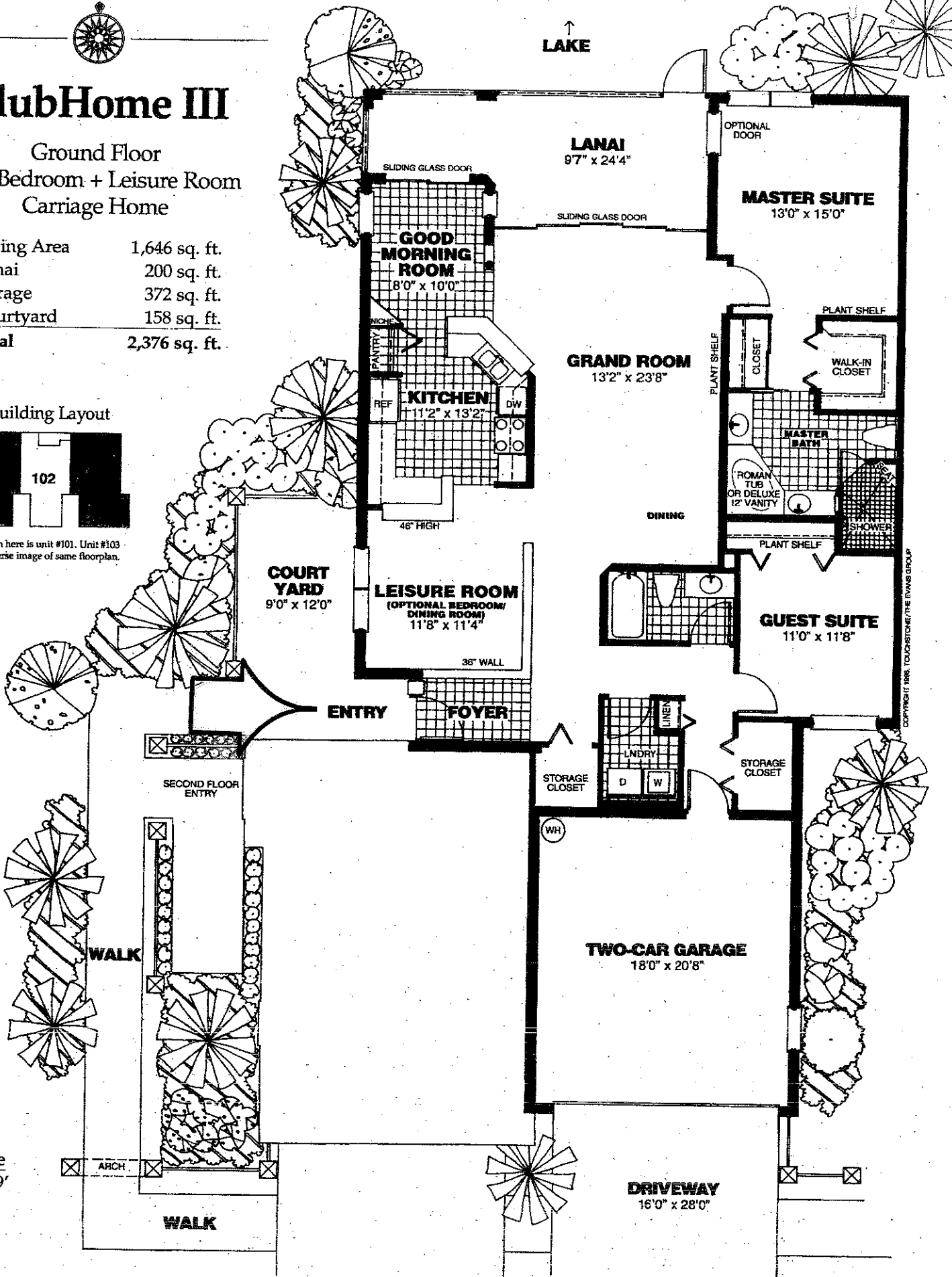
Ground Floor
Two Bedroom + Leisure Room
Carriage Home

Living Area	1,646 sq. ft.
Lanai	200 sq. ft.
Garage	372 sq. ft.
Courtyard	158 sq. ft.
Total	2,376 sq. ft.

Building Layout



Shown here is unit #101. Unit #103 is reverse image of same floorplan.



Scale
1" = 9'

All dimensions are approximate. The developer reserves the right to change and alter all materials specifications, features, dimensions and designs without notice.

**ACTUAL FLOOR PLAN
IS MIRROR IMAGE.**



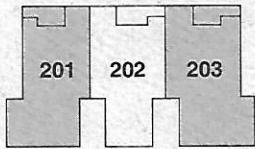
↑
LAKE

ClubHome IV

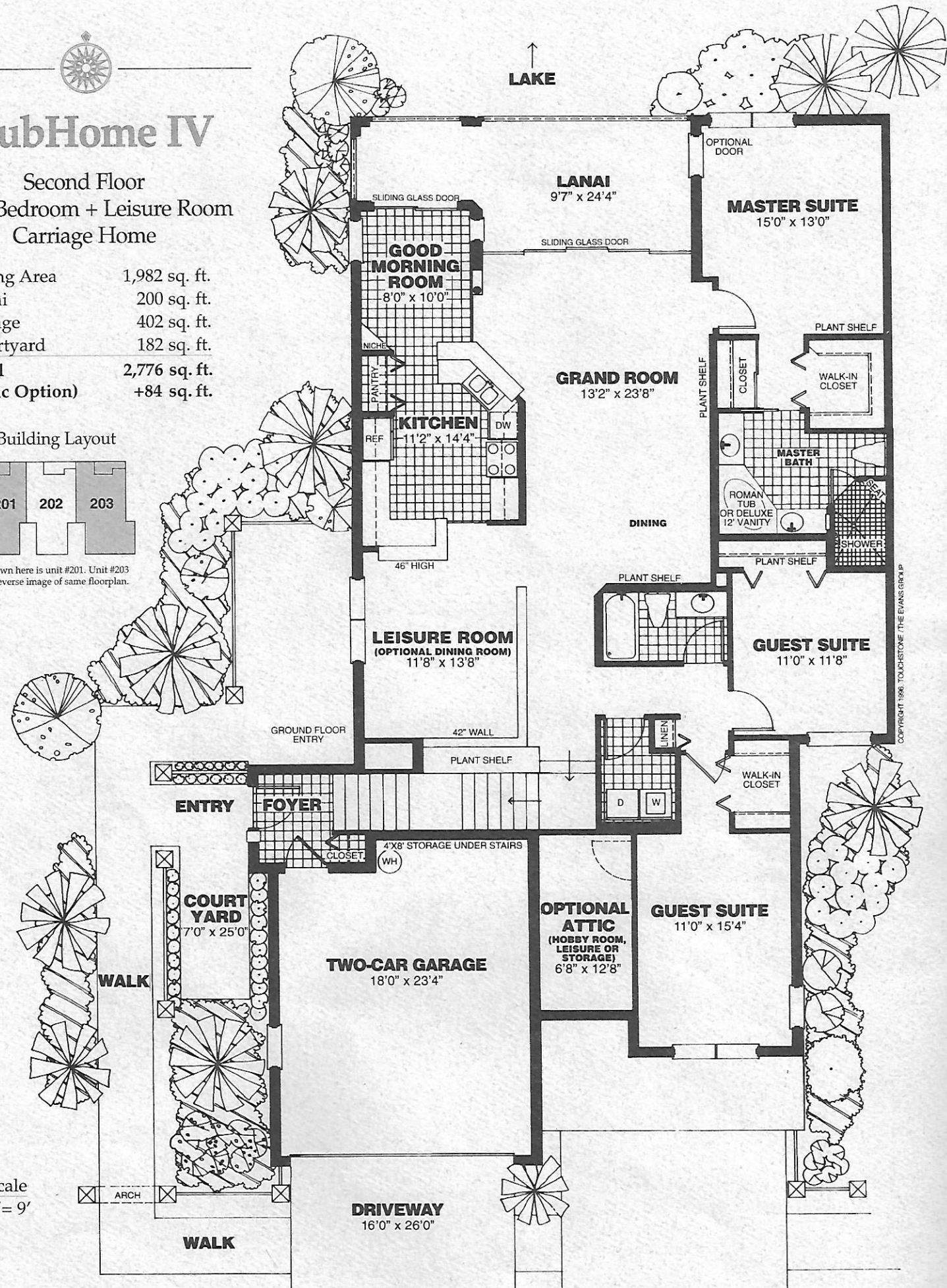
Second Floor
Three Bedroom + Leisure Room
Carriage Home

Living Area	1,982 sq. ft.
Lanai	200 sq. ft.
Garage	402 sq. ft.
Courtyard	182 sq. ft.
Total	2,776 sq. ft.
(Attic Option)	+84 sq. ft.

Building Layout



Shown here is unit #201. Unit #203 is reverse image of same floorplan.



COPYRIGHT 1996 TOUCHSTONE THE EVANS GROUP

Scale
1" = 9'

All dimensions are approximate. The developer reserves the right to change and alter all materials specifications, features, dimensions and designs without notice.

↑
LAKE

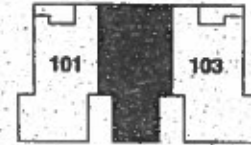


ClubHome I

Ground Floor
Two Bedroom + Leisure Room
Carriage Home

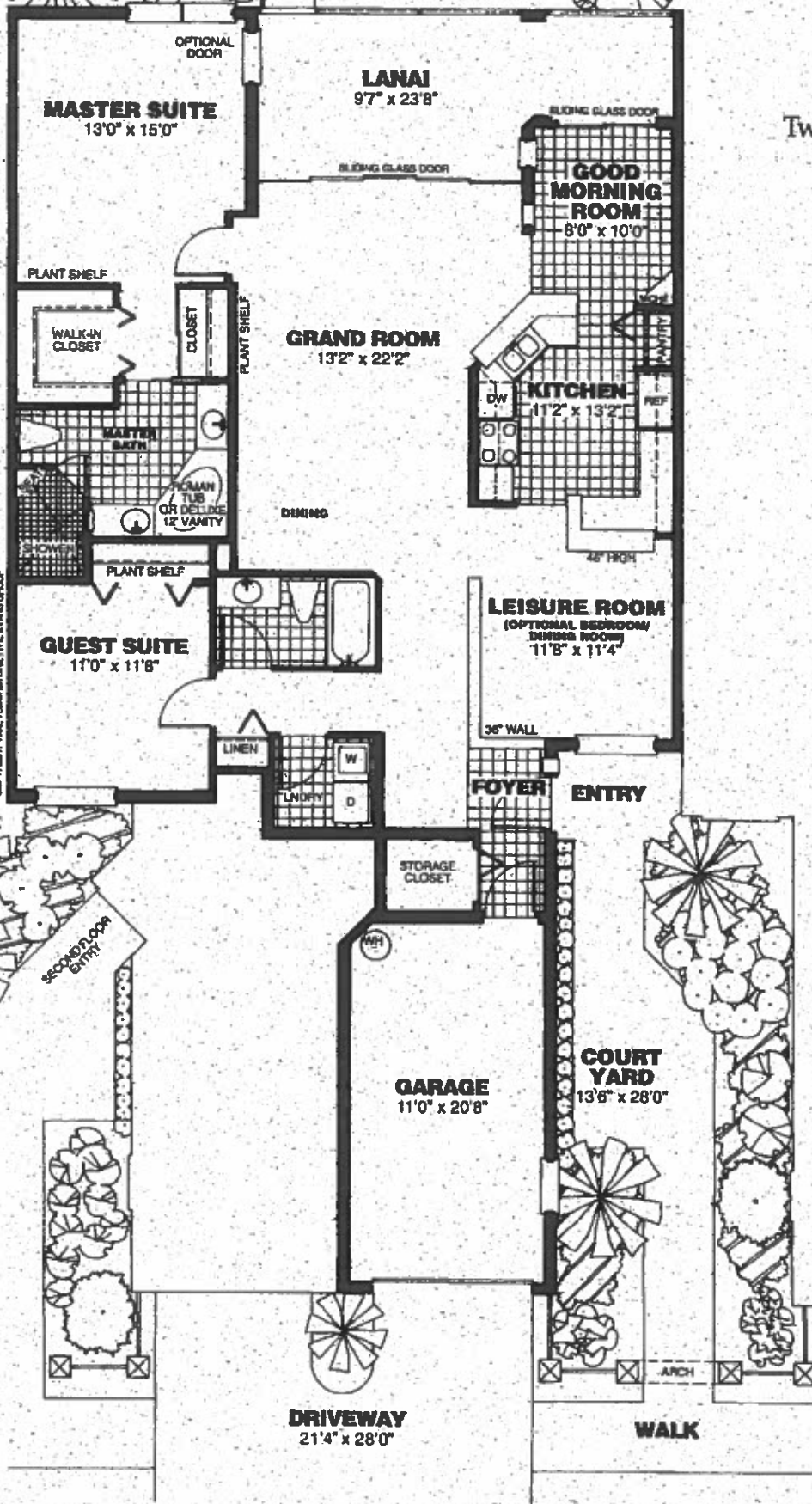
Living Area	1,570 sq. ft.
Lanai	196 sq. ft.
Garage	228 sq. ft.
Courtyard	408 sq. ft.
Total	2,402 sq. ft.

Building Layout



Shown here is unit #102.

COMMENTS: SEE TOOLS/SETTINGS IN THE FINISH SPEC

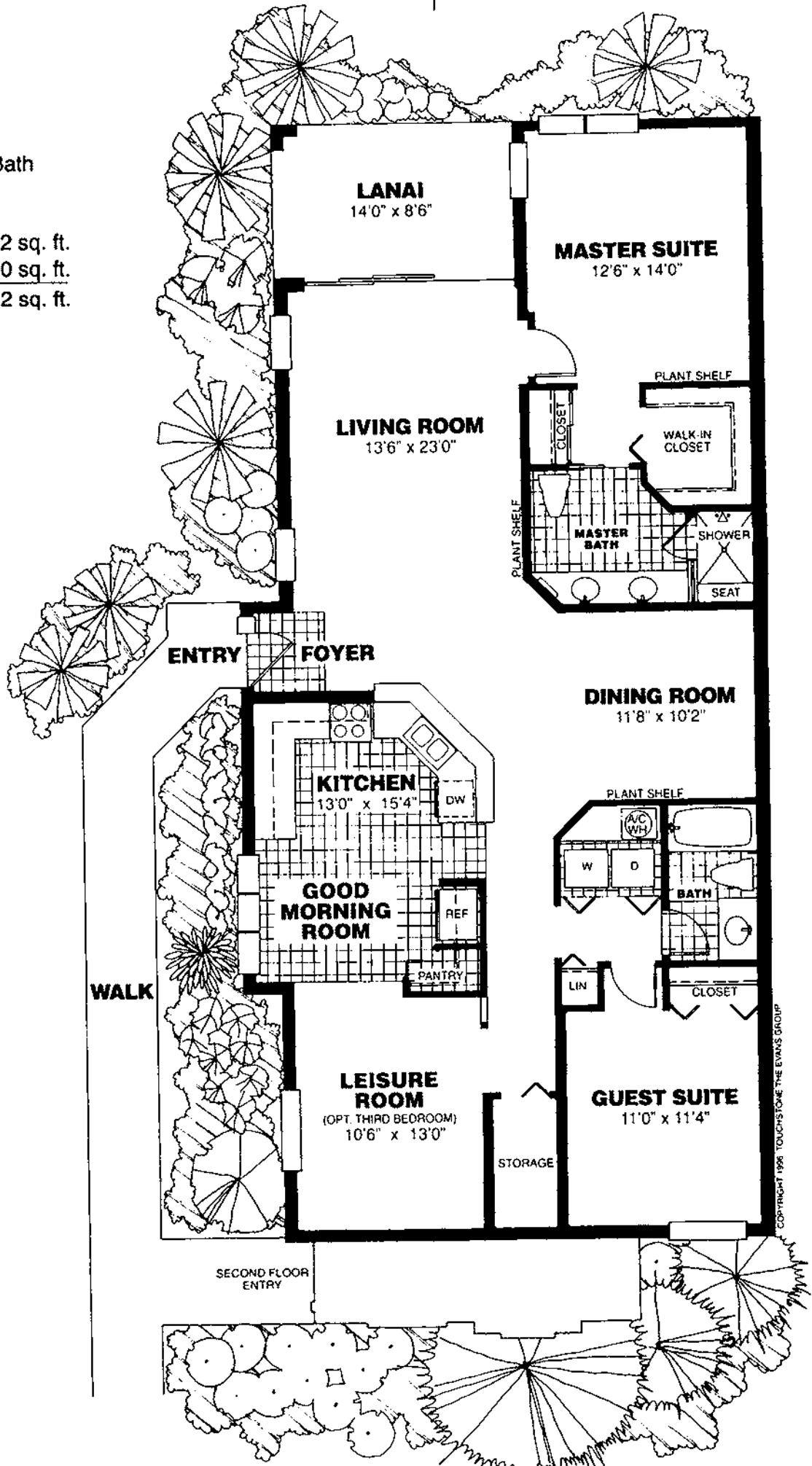


Scale
1" = 9'

All dimensions are approximate. The developer reserves the right to change and alter all materials specifications, features, dimensions and designs without notice.

GARDEN CONDO
 Three Bedroom/Two Bath
 Ground Floor

Living Area	1,632 sq. ft.
Lanai	120 sq. ft.
TOTAL	1,752 sq. ft.



COPYRIGHT 1996 TOUCHSTONE THE EVANS GROUP



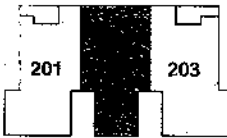


GrandHome V

Second Floor
Three Bedroom + Formal Dining
Carriage Home

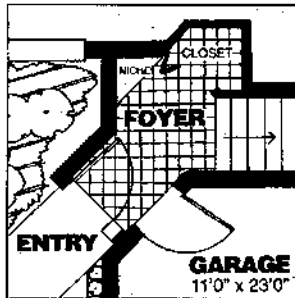
Living Area	1,922 sq. ft.
Lanai	196 sq. ft.
Garage	254 sq. ft.
Courtyard	386 sq. ft.
Total	2,758 sq. ft.
(Attic Option)	+66 sq. ft.

Building Layout

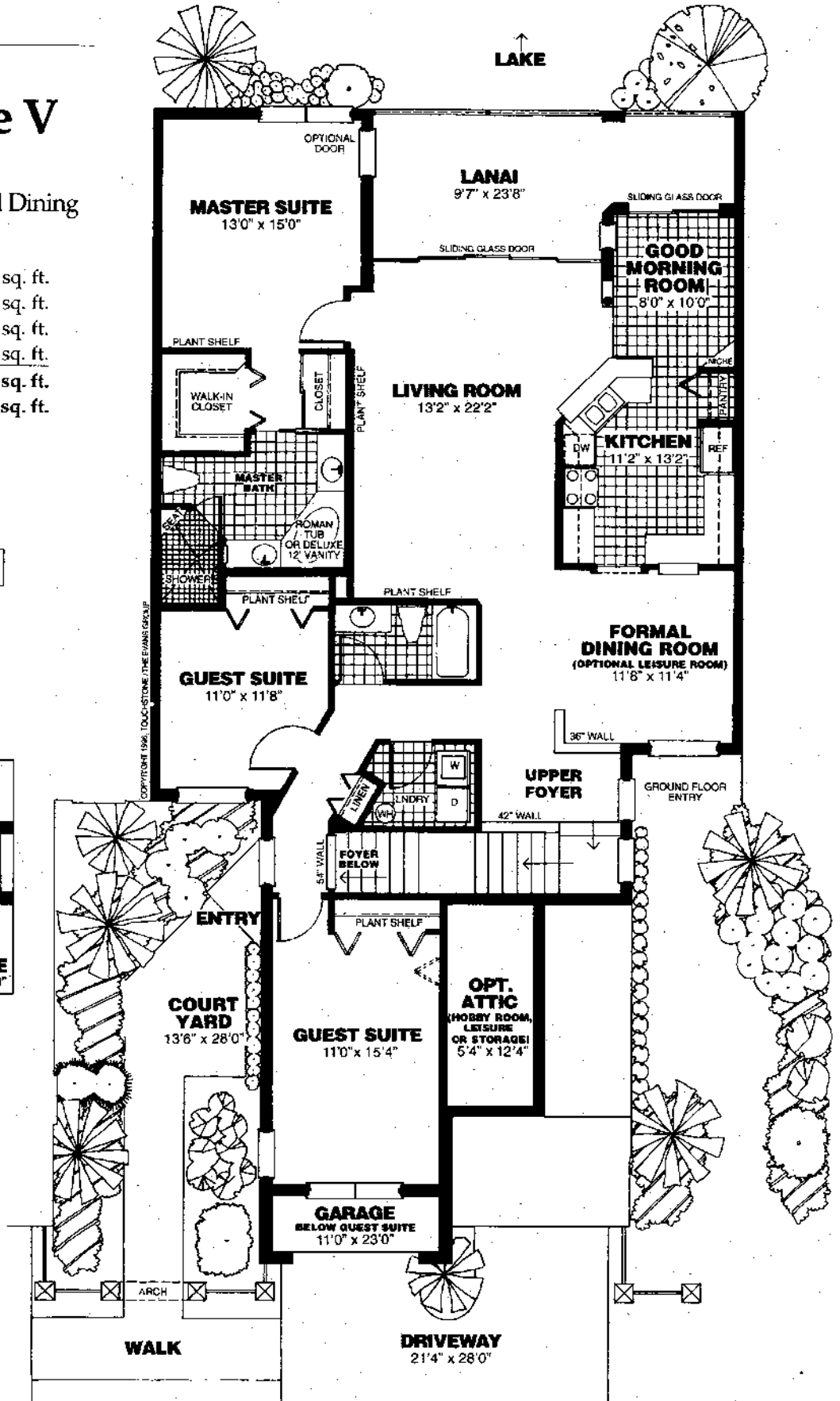


Shown here is unit #202.

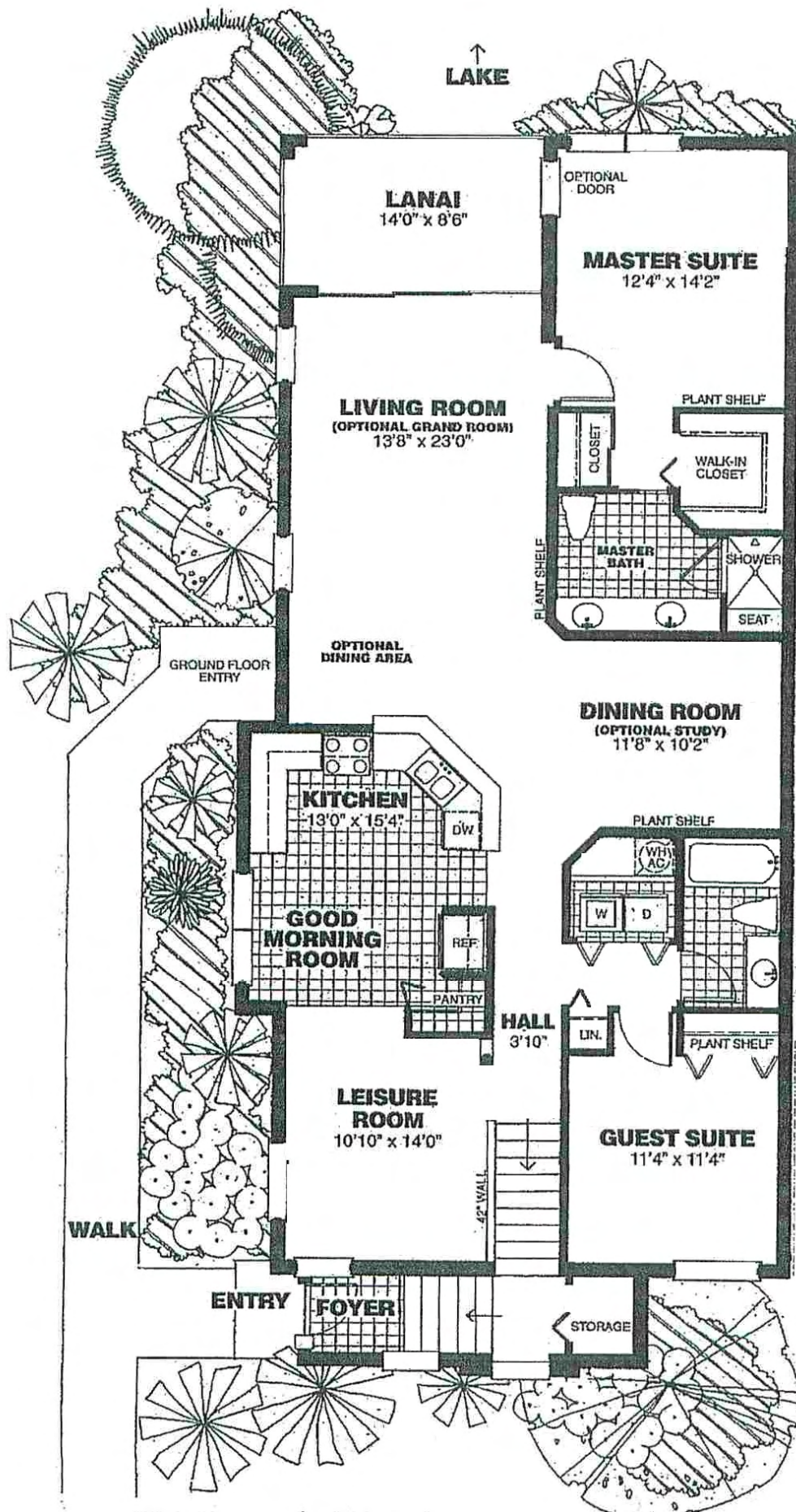
Entry to Residence from
First Floor



Scale
1" = 9'



All dimensions are approximate. The developer reserves the right to change and alter all materials specifications, features, dimensions and designs without notice.

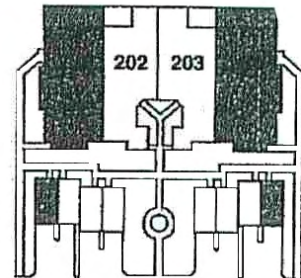


Village Home II

Second Floor
Two Bedroom + Leisure Room
Two Bath, Garden Condo

Living Area	1,696 sq. ft.
Lanai	122 sq. ft.
Detached Garage	216 sq. ft.
Total	2,034 sq. ft.

Building Layout



Shown here is unit #201. Unit #204 is reverse image of same floorplan.

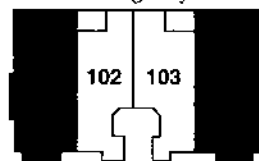


VillageHome I

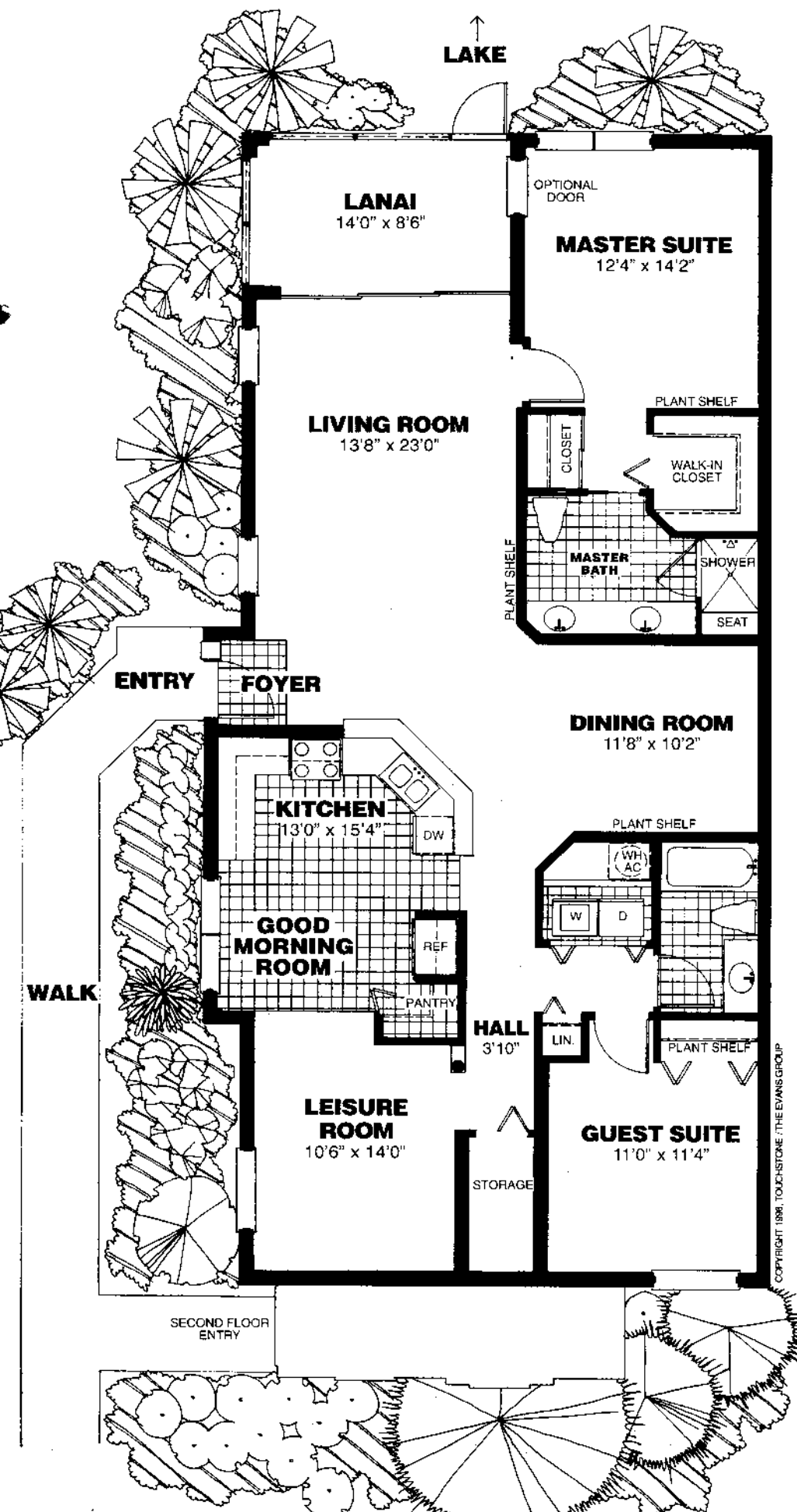
Ground Floor
Two Bedroom + Leisure Room
Two Bath, Garden Condo

Living Area	1,616 sq. ft.
Lanai	122 sq. ft.
Total	1,738 sq. ft.
Plus Carport	

Building Layout



Shown here is unit #101. Unit #104 is reverse image of same floorplan.



COPYRIGHT 1998 TOUCHSTONE / THE EVANS GROUP

Scale
1" = 8'

All dimensions are approximate. The developer reserves the right to change and alter all materials specifications, features, dimensions and designs without notice.

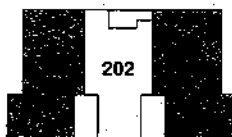


GrandHome IV

Second Floor
Three Bedroom + Formal Dining
Carriage Home

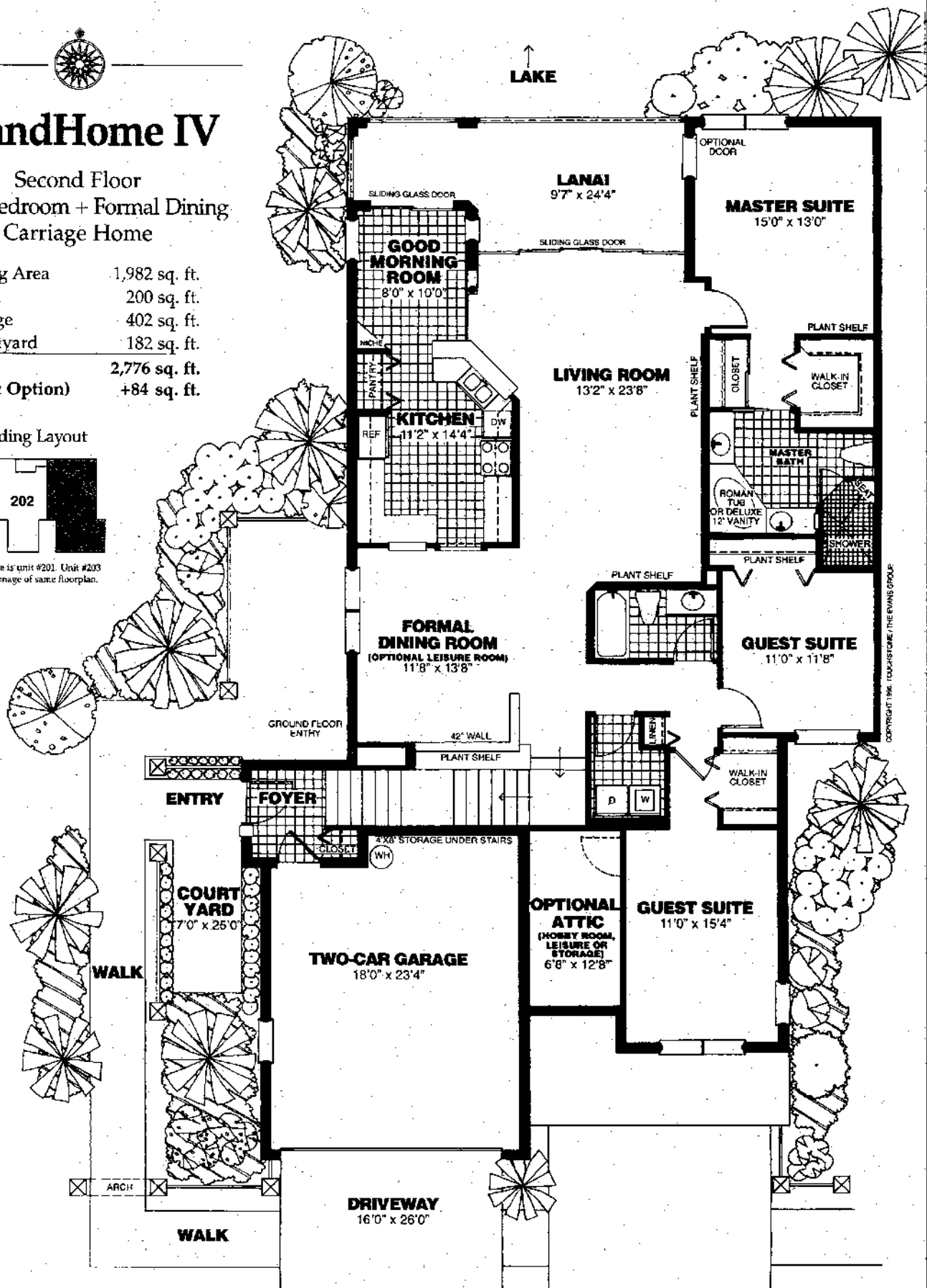
Living Area	1,982 sq. ft.
Lanai	200 sq. ft.
Garage	402 sq. ft.
Courtyard	182 sq. ft.
Total	2,776 sq. ft.
(Attic Option)	+84 sq. ft.

Building Layout



Shown here is unit #201. Unit #203 is reverse image of same floorplan.

Scale
1" = 9'



All dimensions are approximate. The developer reserves the right to change and alter all materials specifications, features, dimensions and designs without notice.