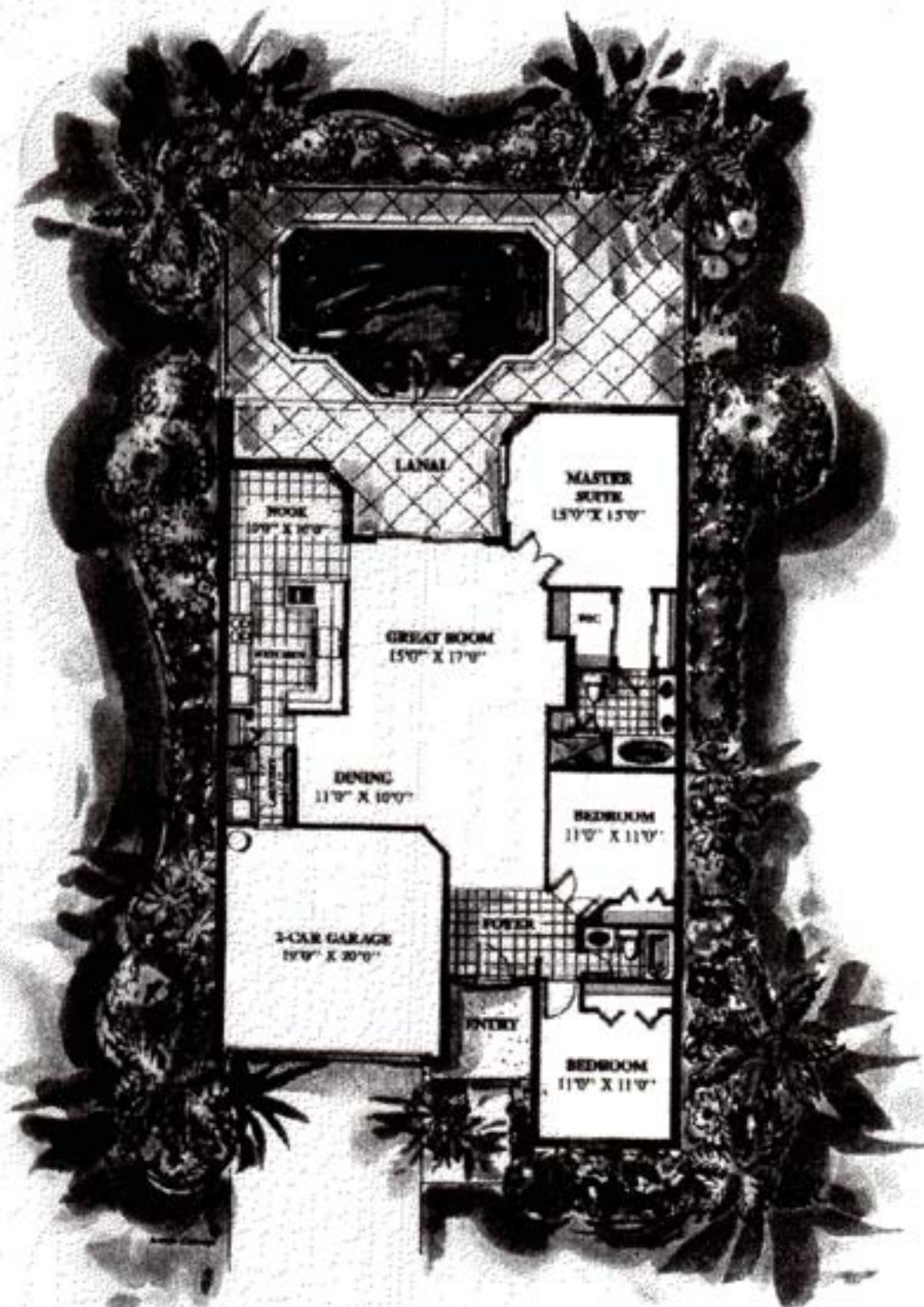


Floor Plans

These floor plans have been assembled as a resource for you. They may not be inclusive of every home in the community.

Please note that over time, owners may make modifications to spaces that may not be captured in these original floor plans.

Renderings are not a guarantee of space measurement. Interested parties should verify through their own secured services.



**SANIBEL
POOL & SPA**

3 BDR 2 BA & DBL Garage
1732 Sq. Ft.A/C
2414 Sq. Ft. Total

Cayo Costa Isles AT MOON LAKE



Captiva

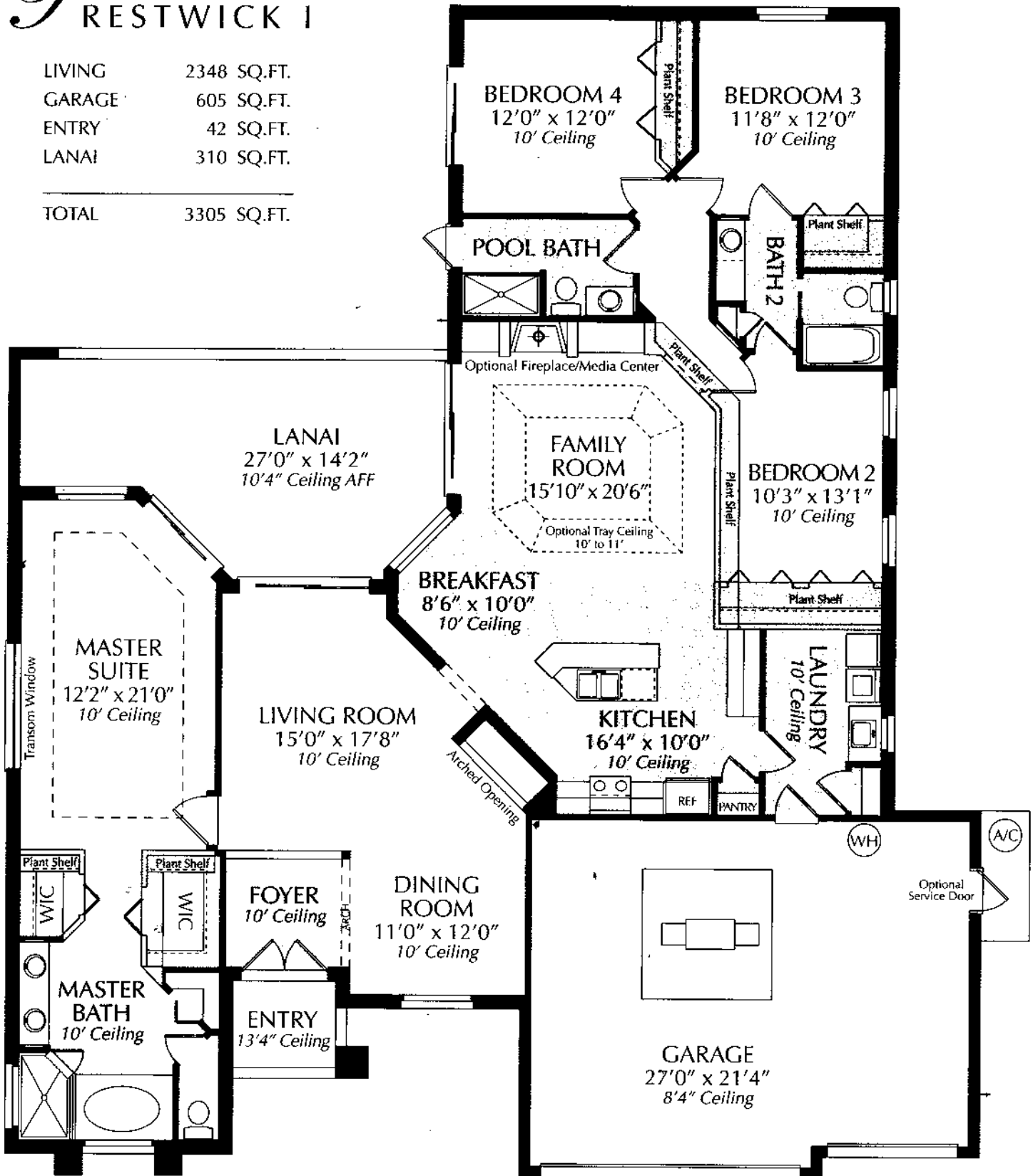
Living	1814 Sq. Ft.
Lanai	473 Sq. Ft.
Garage	436 Sq. Ft.
Entry	69 Sq. Ft.
Total	2792 Sq. Ft.

Oral representations cannot be relied upon as correctly stating representations of the developer. For correct representations references should be made to this brochure and to the documents required by Florida statute section 718.503, to be furnished by a developer to a buyer or lessee.



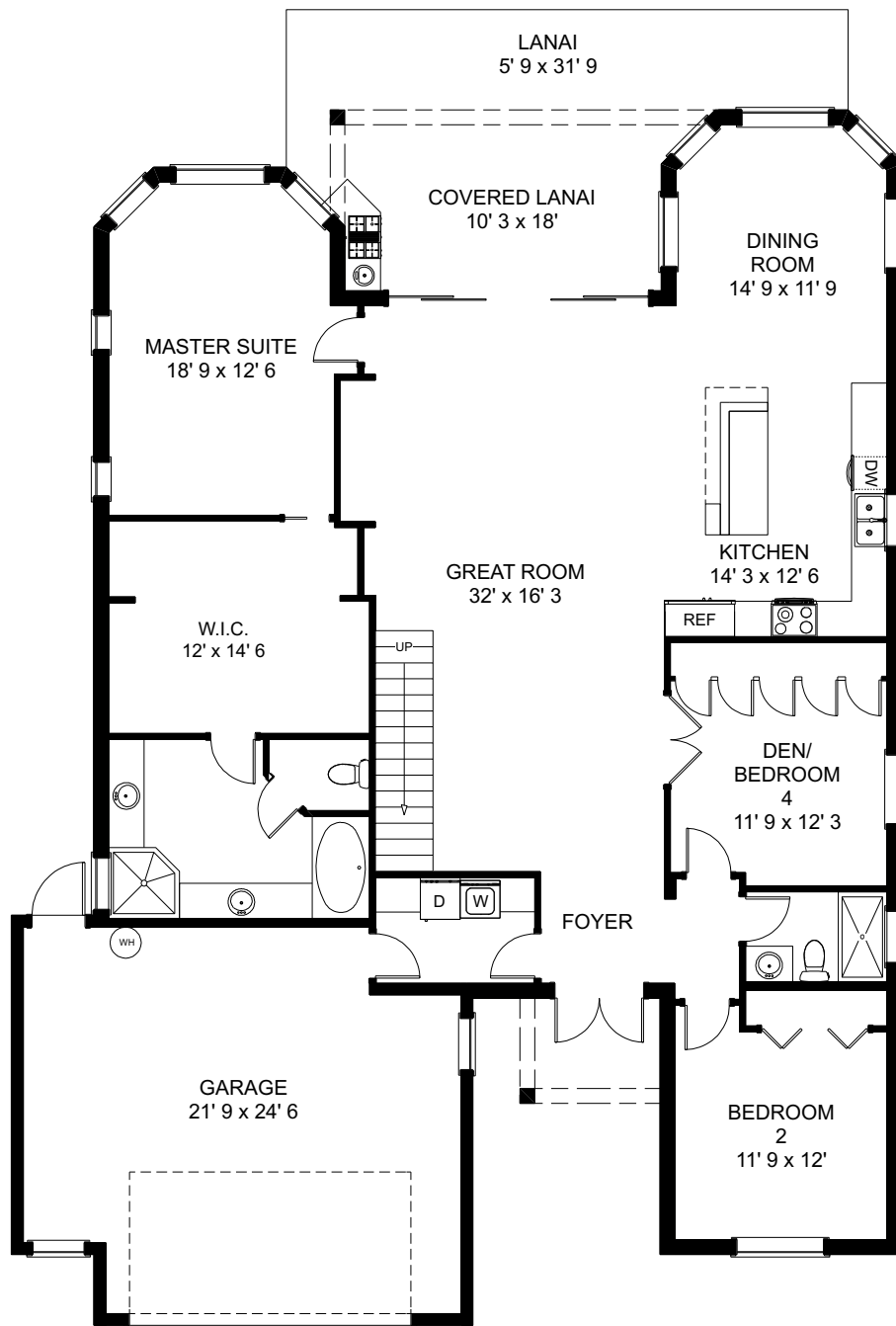
P RESTWICK I

LIVING	2348 SQ.FT.
GARAGE	605 SQ.FT.
ENTRY	42 SQ.FT.
LANAI	310 SQ.FT.
<hr/>	
TOTAL	3305 SQ.FT.



Dimensions may be subject to minor variations during construction. Whitehall Quality Homes reserves the right to change floor plans, specifications and prices without notice. Wall and window treatments, floor coverings, softscape and hardscape landscaping and many other items featured in and around the model homes are decorator suggested and not included in the purchase price. All renderings, floor plans and maps are an artist's conception, and are not intended to be an actual depiction of the buildings, fencing, walks, driveways or landscaping. Please see our sales representative with any questions.

©2004 Whitehall Quality Homes • www.whitehallhomes.com • 1/16/04

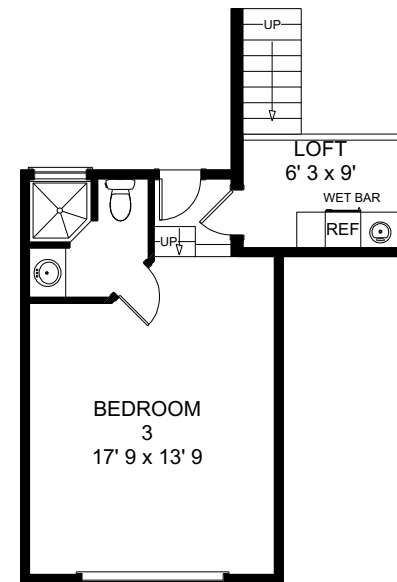


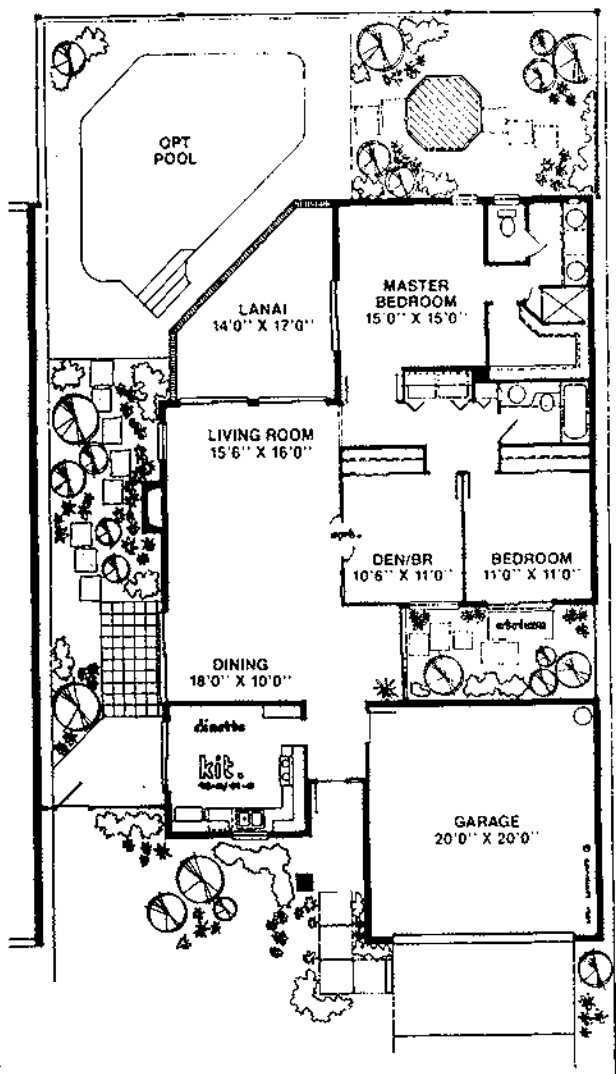
Main Living 2178 sq. ft.
Upper Living 392 sq. ft.

TOTAL UNDER AIR 2570 sq. ft.
Garage 549 sq. ft.
Covered Entry 47 sq. ft.
Covered Lanai 193 sq. ft.

TOTAL UNDER ROOF 3359 sq. ft.
Lanai 191 sq. ft.

TOTAL AREA 3550 sq. ft.





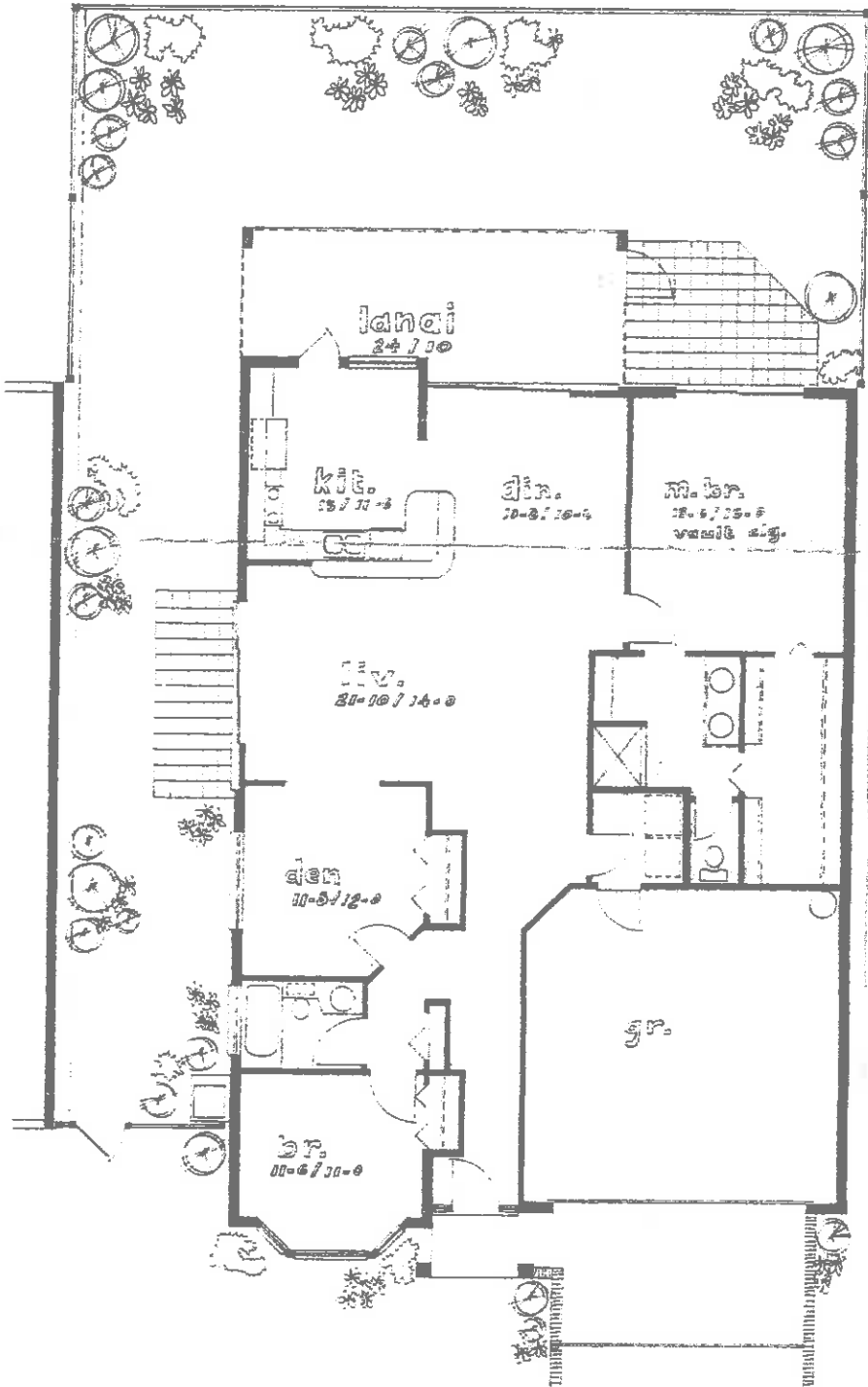
STYLE C

- 3-Bedroom
- 2 Car Garage
- Enclosed Yard
- Tile Roof
- No Common Walls
- 1,447 Air Conditioned Square Feet





GARDEN HOMES AT MOON LAKE



Villa Capri

- 3-Bedroom
- 2 Car Garage
- Enclosed Yard
- Tile Roof
- No Common Walls
- 1,631 Air Conditioned Square Feet

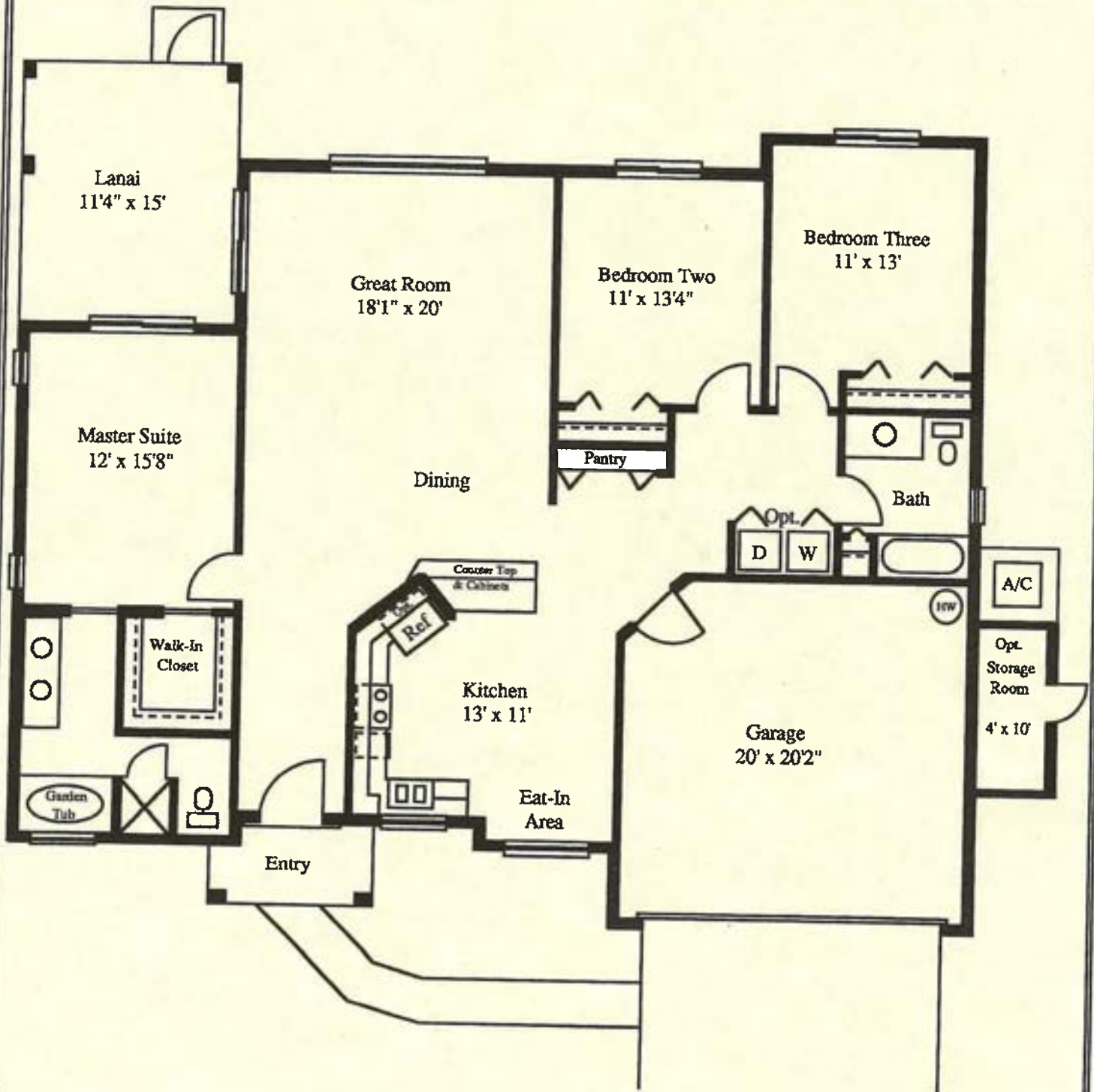
EXECUTIVE Homes AT Moon Lake

Saturn (Upgraded Model)

Living Area	1,679 Sq. Ft.
Entry	47 Sq. Ft.
Lanai	165 Sq. Ft.
Storage Room	40 Sq. Ft.
Garage	402 Sq. Ft.
TOTAL	2,333 Sq. Ft. + POOL

Saturn Upgrades

- Master Suite: Additional window & Closet Space, Pocket Doors to Closet & Bath.
- Master Bath: Extend Room 2', Upgrade to Garden Tub, Additional 3' x 3' Shower, Extend Double Sink, Upgrade Window to 36" x 52"
- Lanai: Extend from 9'4" x 11'4" to 11'4" x 15', Under Roof.
- Kitchen: Additional Cabinets under Bar Counter Top.
- Bedroom Three: Extend Outside Wall 2' (Increases room size to 11' x 13').
- Outside Storage Room: 4' x 10', Under Roof, 2 Electrical Outlets, 1 Light (Switched), Steel Door, Concrete Slab Floor.



*Cayo Costa
Estates*

AT MOON LAKE

*N*EWPORT



FRONT ELEVATION



WHITEHALL

QUALITY HOMES

"building on a good foundation"

Preferred Realty Group, L.C.

12709 Tamiami Trail E., Naples, Florida 34113

(239) 417-3300 • Fax (239) 417-3302



Five-Star
Builder



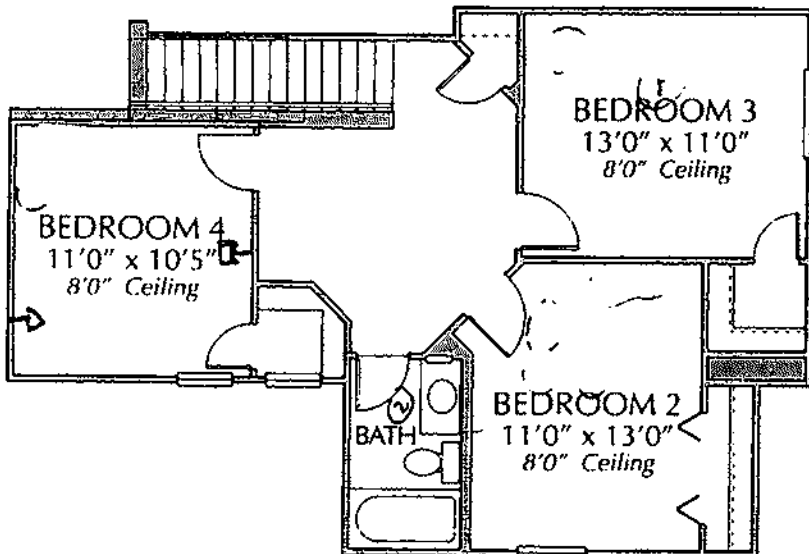
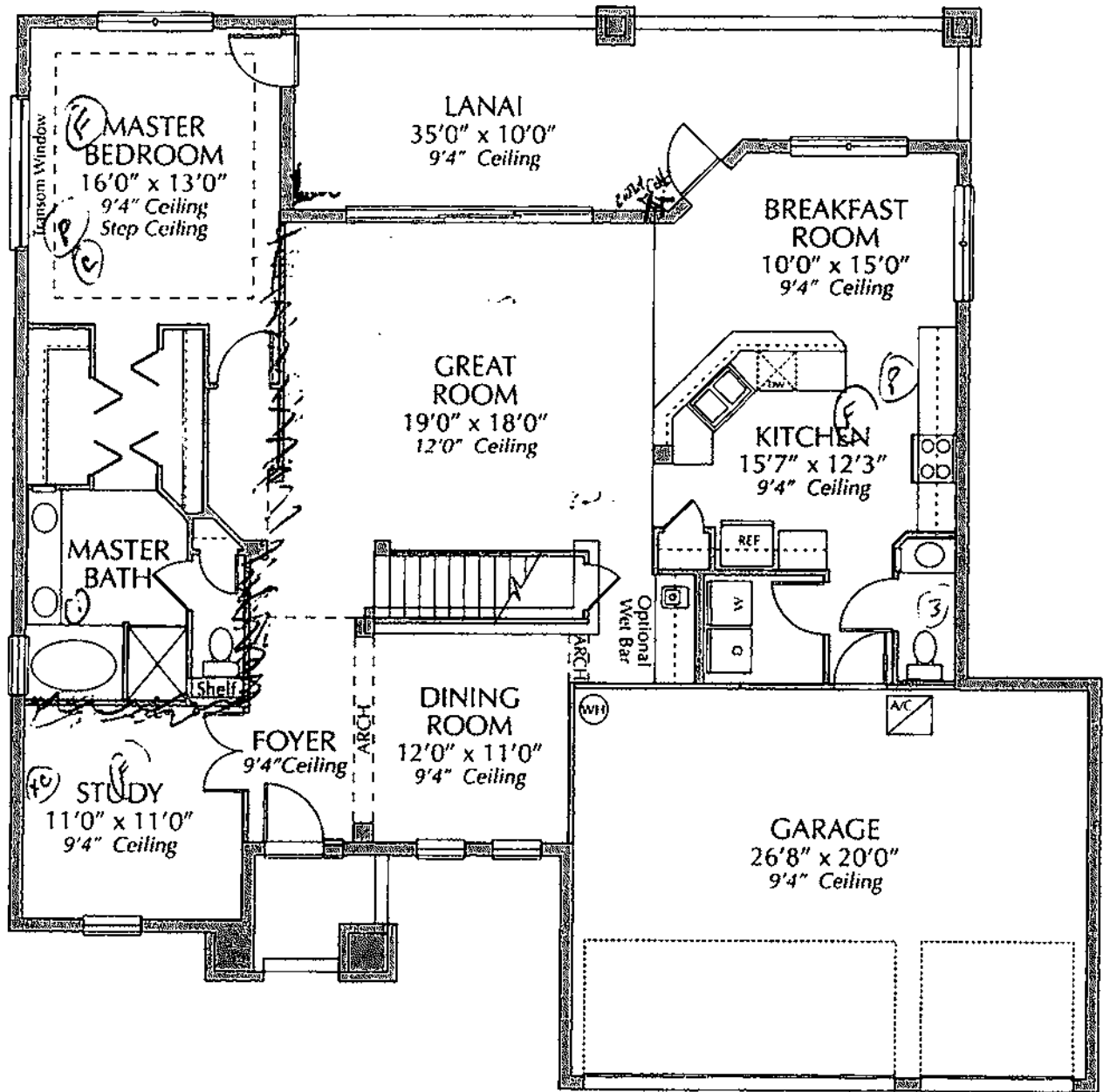
Home Buyer's
Warranty Corporation



Southwest Builder's
Conference



Better Homes
& Gardens



NEWPORT

LIVING-1st Flr	1723 SQ.FT.
LIVING-2nd Flr	665 SQ.FT.
GARAGE	577 SQ.FT.
ENTRY	40 SQ.FT.
LANAI	296 SQ.FT.
TOTAL	3301 SQ.FT.