

## Floor Plans

These floor plans have been assembled as a resource for you. They may not be inclusive of every home in the community.

Please note that over time, owners may make modifications to spaces that may not be captured in these original floor plans.

Renderings are not a guarantee of space measurement. Interested parties should verify through their own secured services.

# ARUBA I

Kimball Hill Homes



OPTIONAL  
GATHERING ROOM  
WITH EXTENDED LANAI

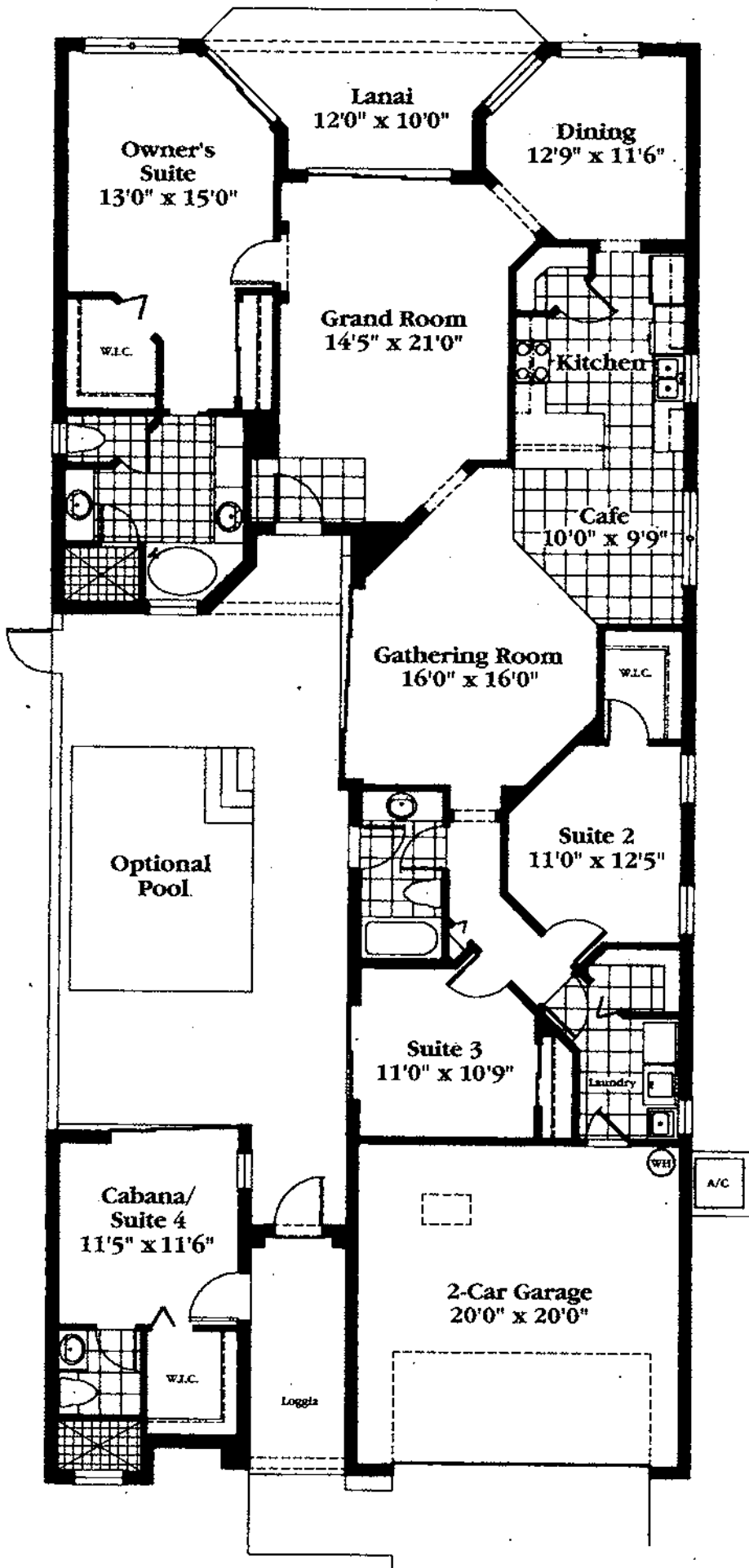


OPT. OPEN  
KITCHEN



## Aruba II

Three Bedroom/Two Bath



## Barbados V

Four Bedroom/Three Bath

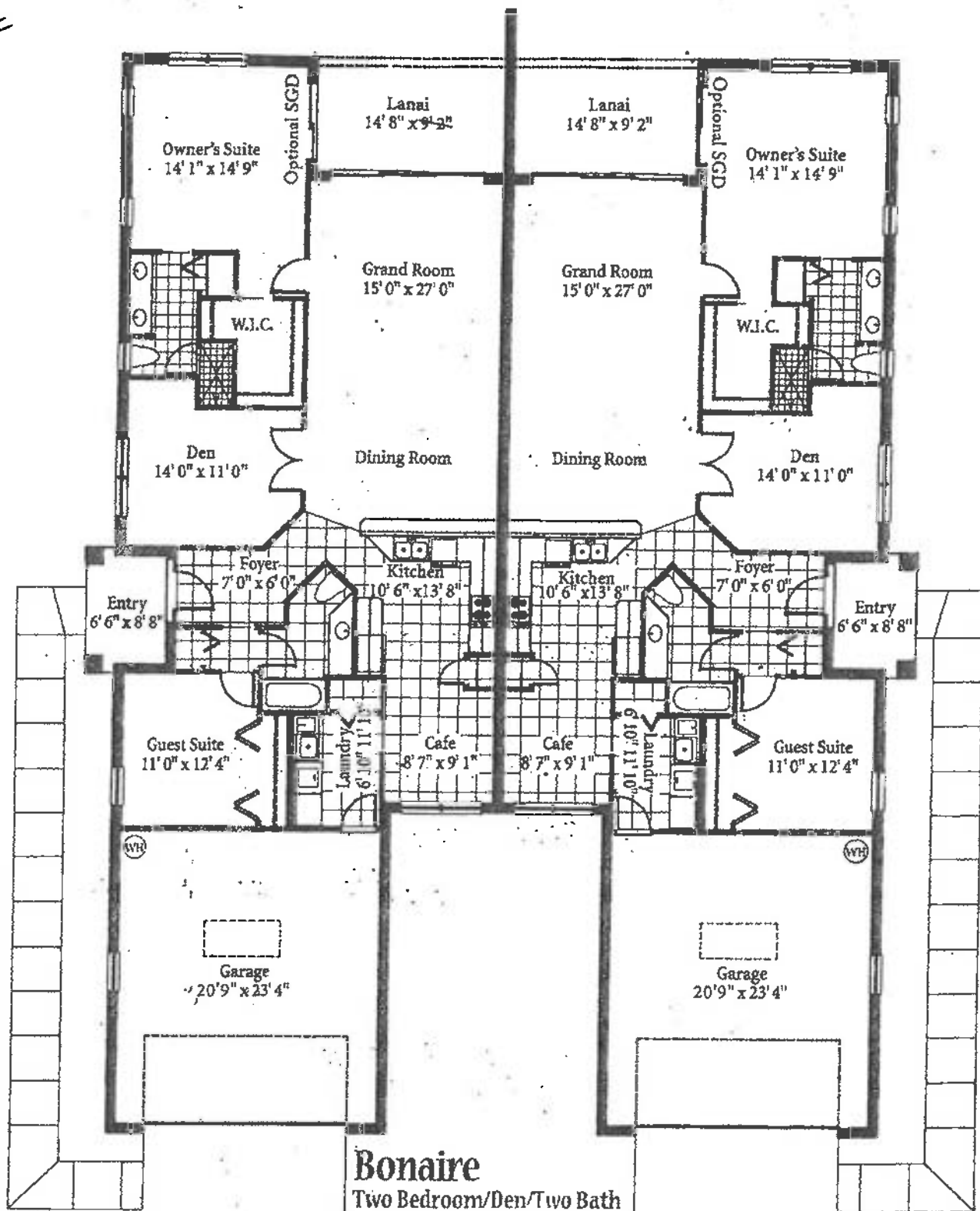
A/C Living Area ..... 2,246 Sq. Ft.

Total ..... 3,154 Sq. Ft.

**NOTE - For 6151 Ashwood Ln:**

Garage is 6' deeper - 20x26

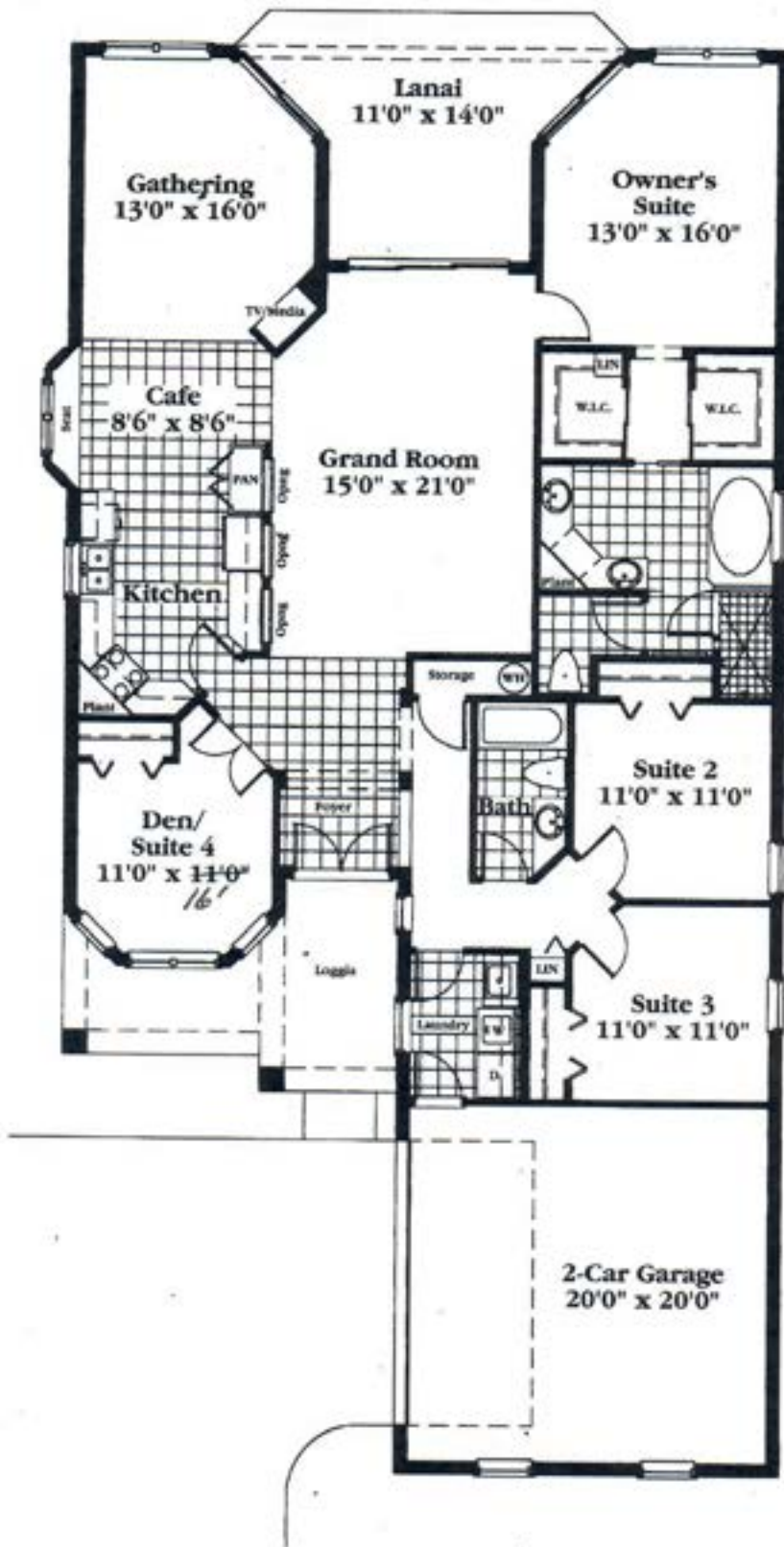
Pool area is 5' wider and 6' longer



## Bonaire

Two Bedroom/Den/Two Bath

A/C Living Area	.....	1,671 Sq. Ft.
Entry	.....	60 Sq. Ft.
Garage	.....	528 Sq. Ft.
Terrace	.....	145 Sq. Ft.
<b>Total</b>	<b>.....</b>	<b>2,404 Sq. Ft.</b>



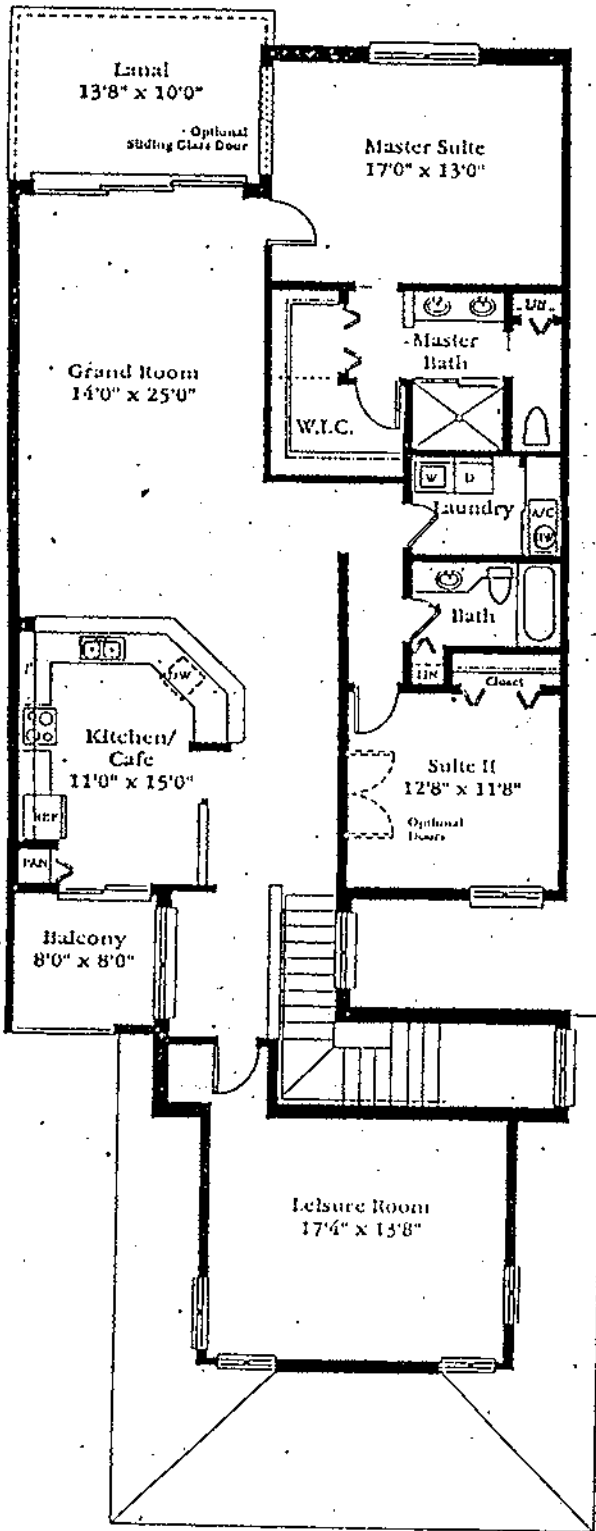
## Cancun III

Three Bedroom/Two Bath

A/C Living Area . . . . . 2,025 Sq. Ft.

Total . . . . . 2,413 Sq. Ft.

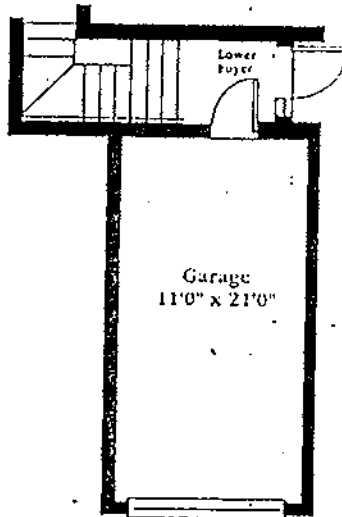




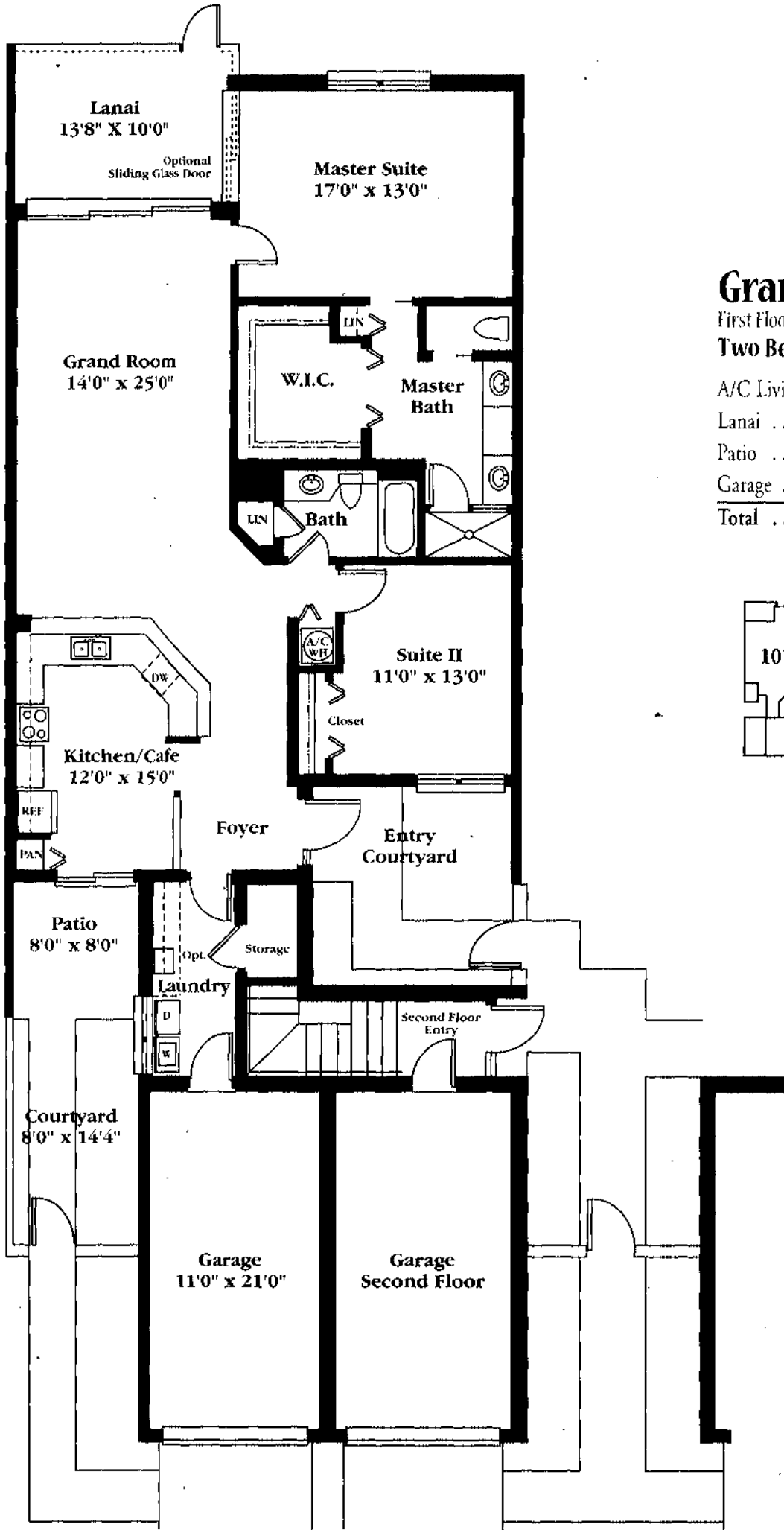
# Grand Home III

Second floor  
Two Bedroom / Two Bath /  
Leisure Room

A/C Living Area	..... 2,050 Sq. Ft.
Lanai	..... 137 Sq. Ft.
Balcony	..... 64 Sq. Ft.
Garage	..... 231 Sq. Ft.
<b>Total</b>	<b>..... 2,482 Sq. Ft.</b>



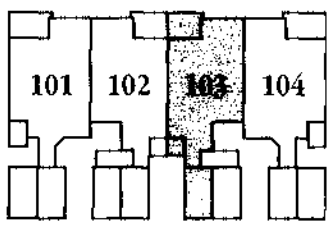
1/10/10



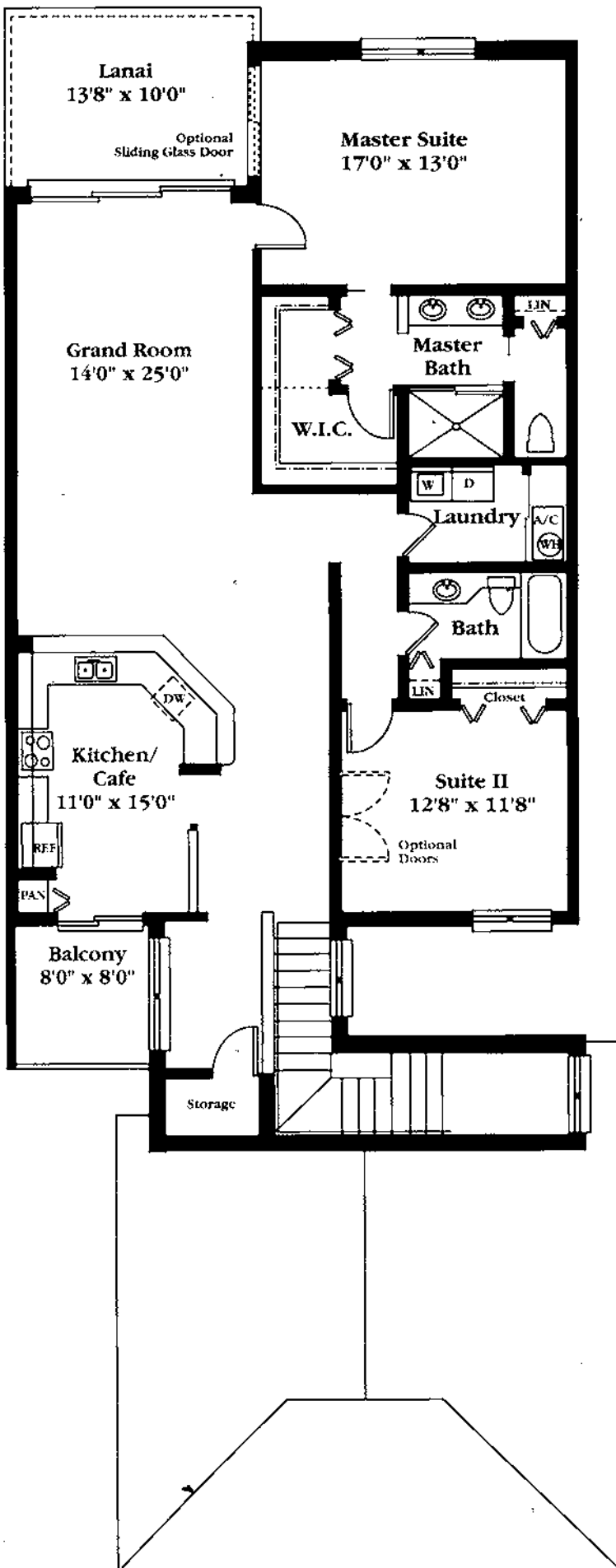
# Grand Home I

First Floor  
Two Bedroom / Two Bath

A/C Living Area	.....	1,512 Sq. Ft.
Lanai	.....	137 Sq. Ft.
Patio	.....	64 Sq. Ft.
Garage	.....	231 Sq. Ft.
<b>Total</b>	<b>.....</b>	<b>1,944 Sq. Ft.</b>







## Grand Home II

Second Floor

Two Bedroom / Two Bath

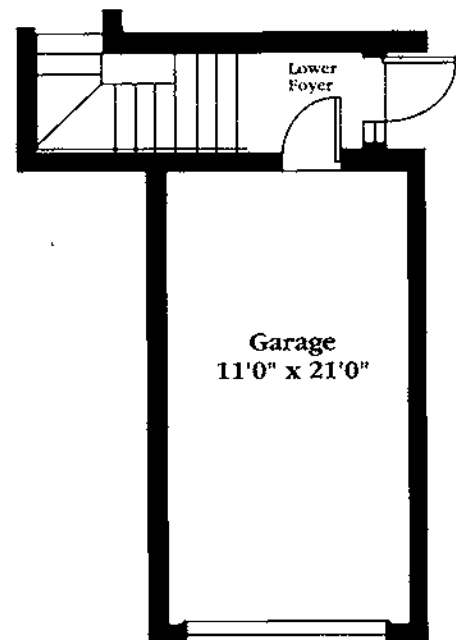
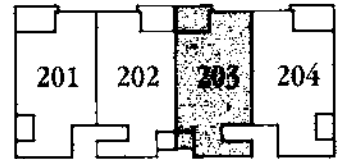
A/C Living Area ..... 1,798 Sq. Ft.

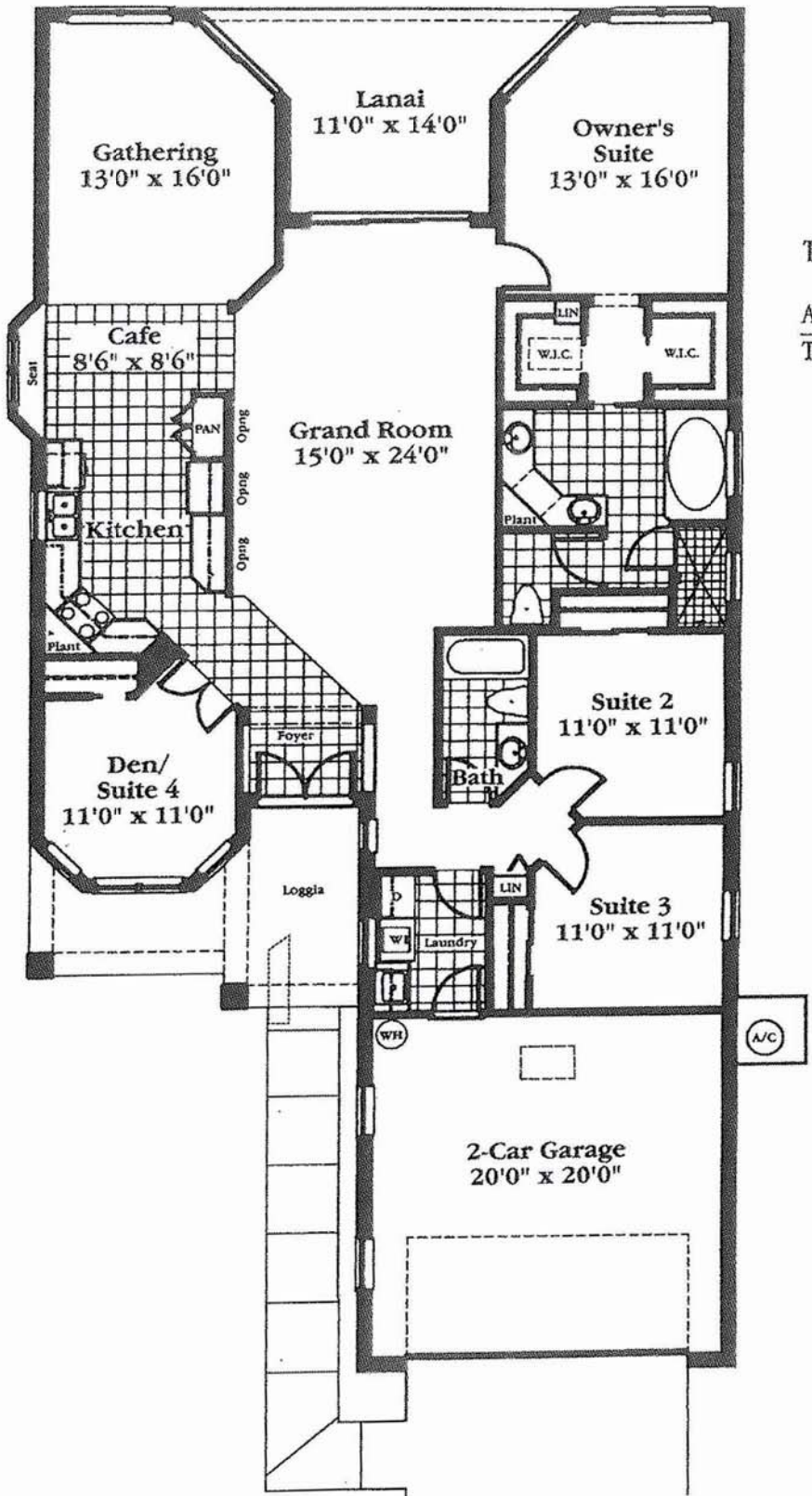
Lanai ..... 137 Sq. Ft.

Balcony ..... 64 Sq. Ft.

Garage ..... 231 Sq. Ft.

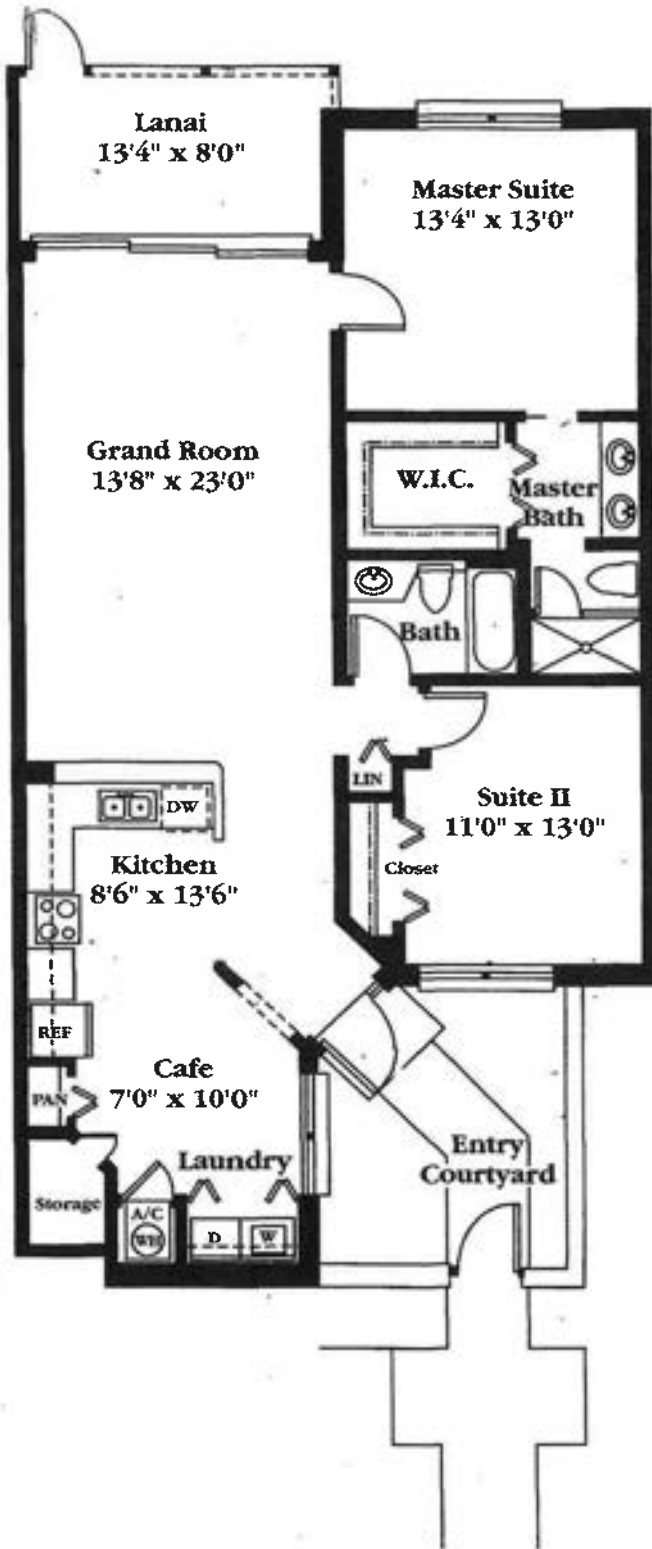
Total ..... 2,230 Sq. Ft.





**Three Bedroom/Two Bath**

A/C Living Area . . . . . 2,025 Sq. Ft.  
 Total . . . . . 2,821 Sq. Ft.



# Lake Home I

First Floor

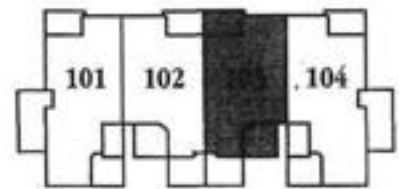
**Two Bedroom / Two Bath**

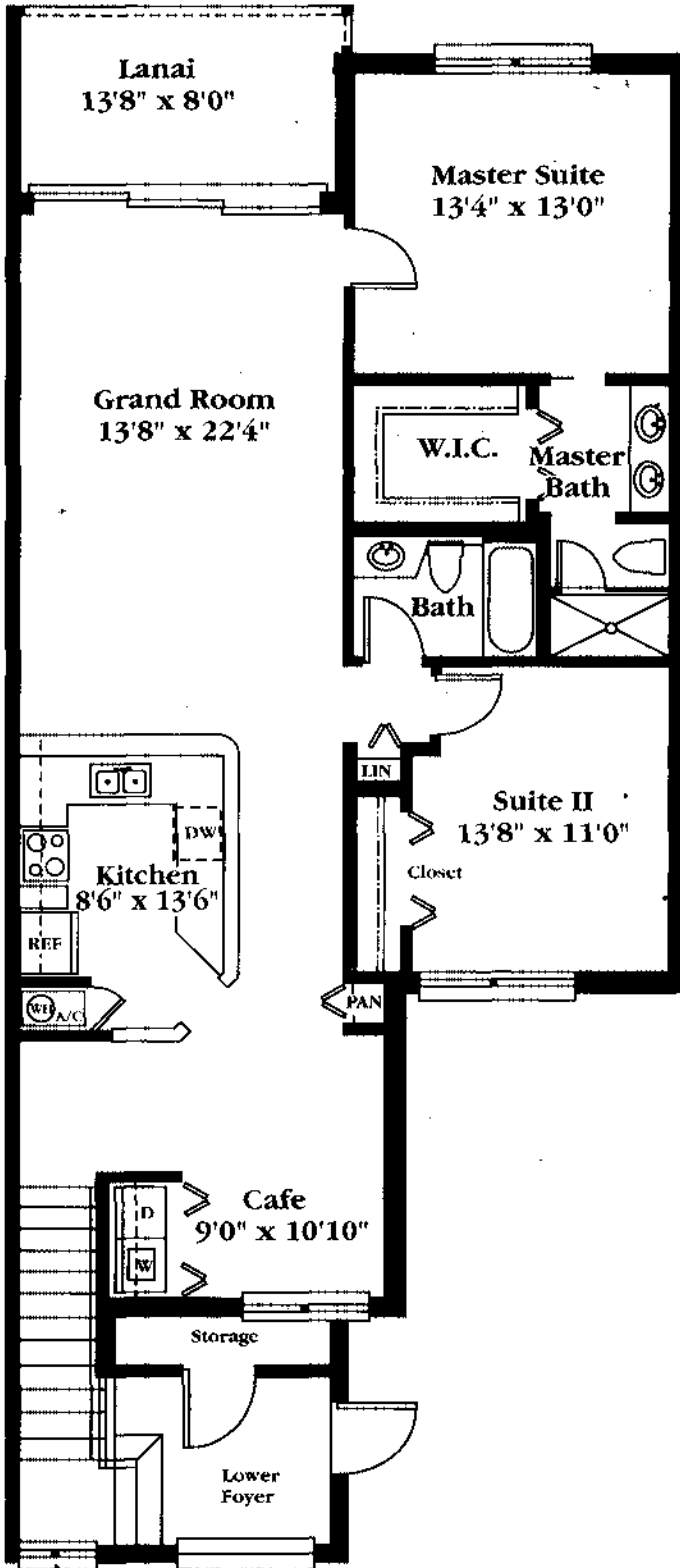
A/C Living Area ..... 1,202 Sq. Ft.

Lanai ..... 107 Sq. Ft.

**Total ..... 1,309 Sq. Ft.**

Plus Carport





# Lake Home II

Second Floor

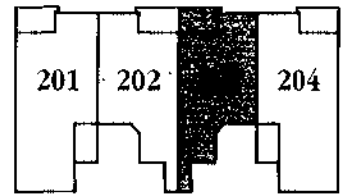
**Two Bedroom / Two Bath**

A/C Living Area ..... 1,427 Sq. Ft.

Lanai ..... 109 Sq. Ft.

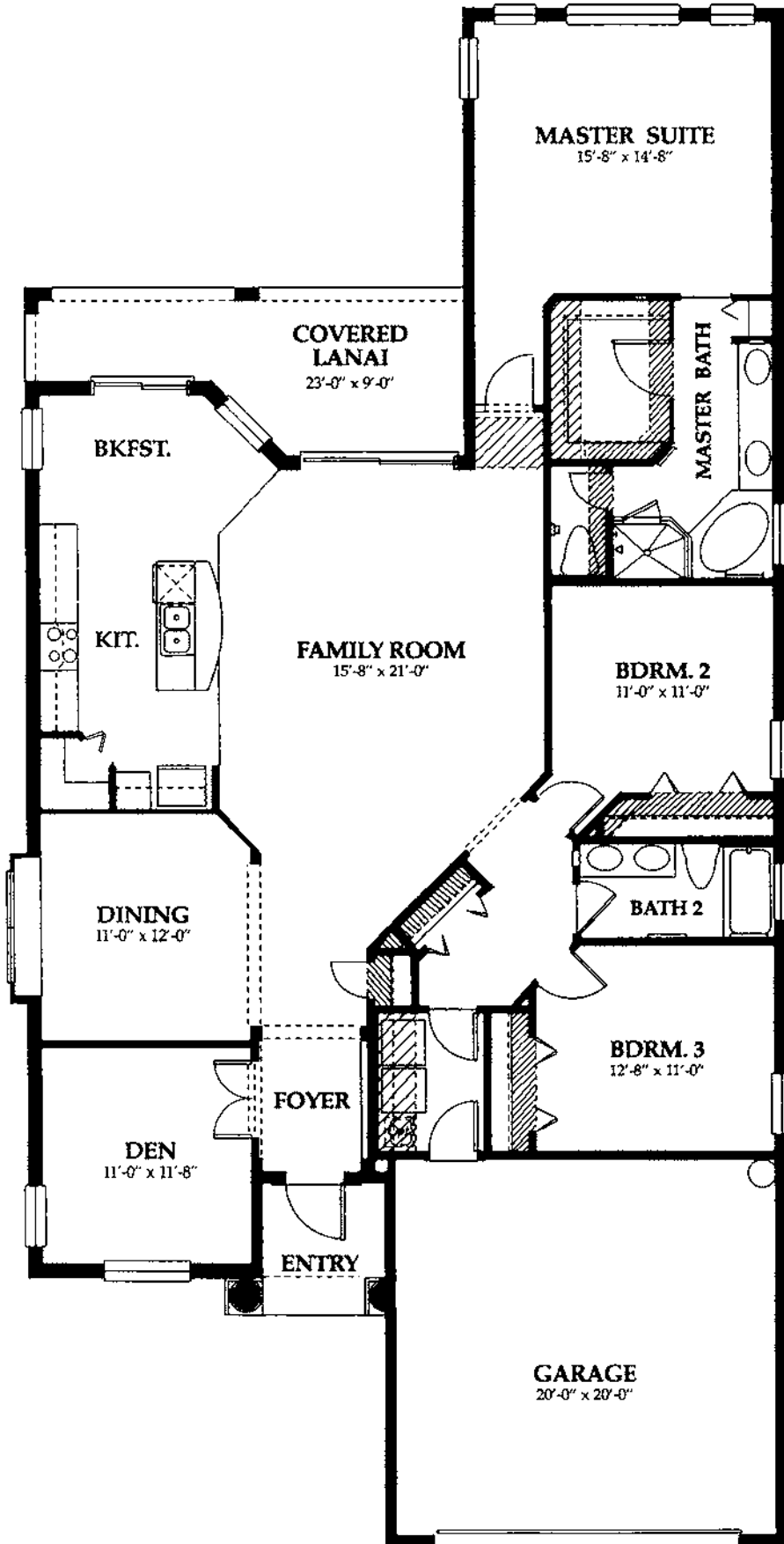
**Total ..... 1,536 Sq. Ft.**

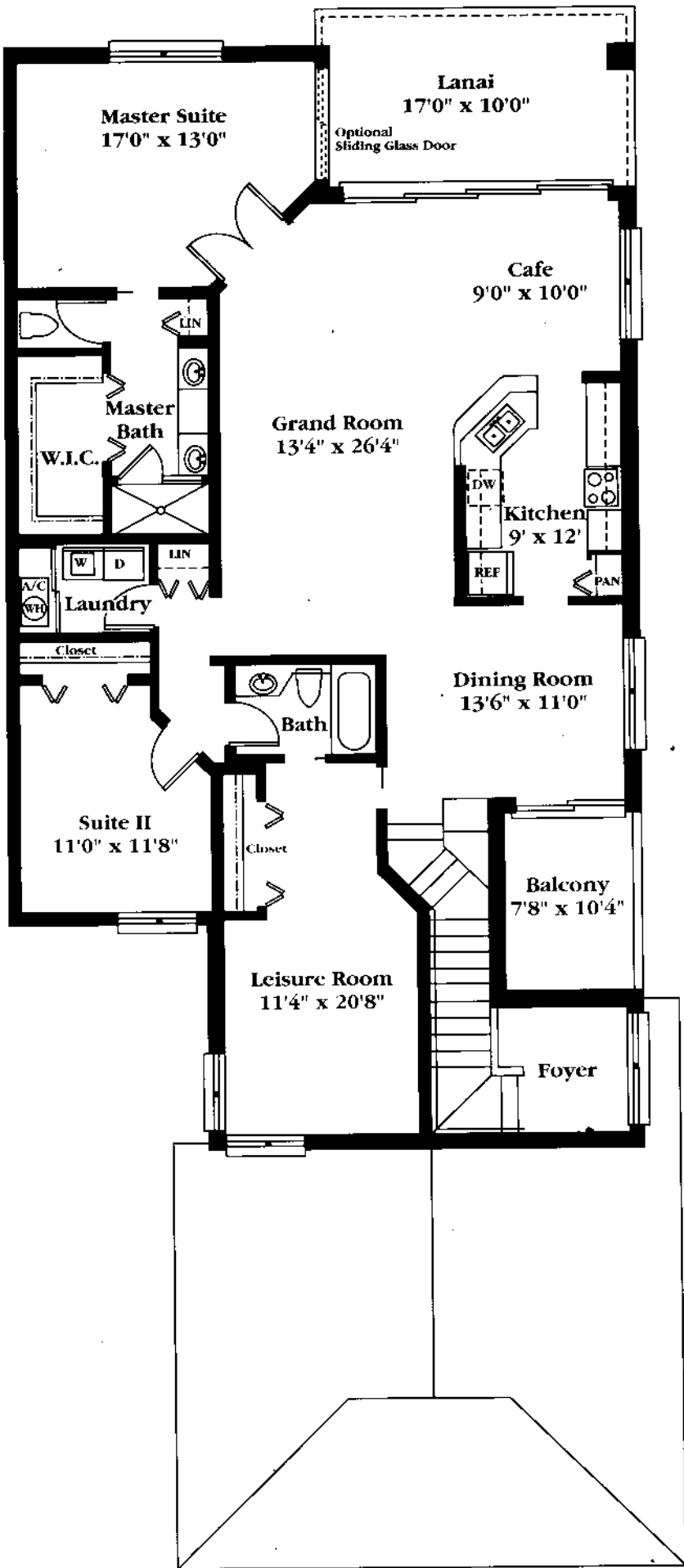
Plus Carport



# LANCASTER II - Designer Collection

Kimball Hill Homes



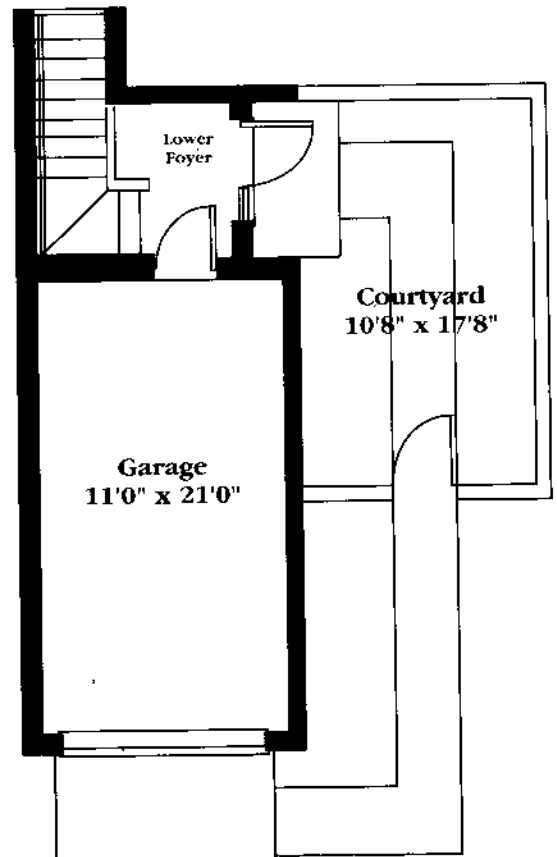
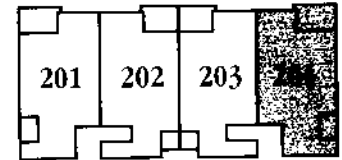


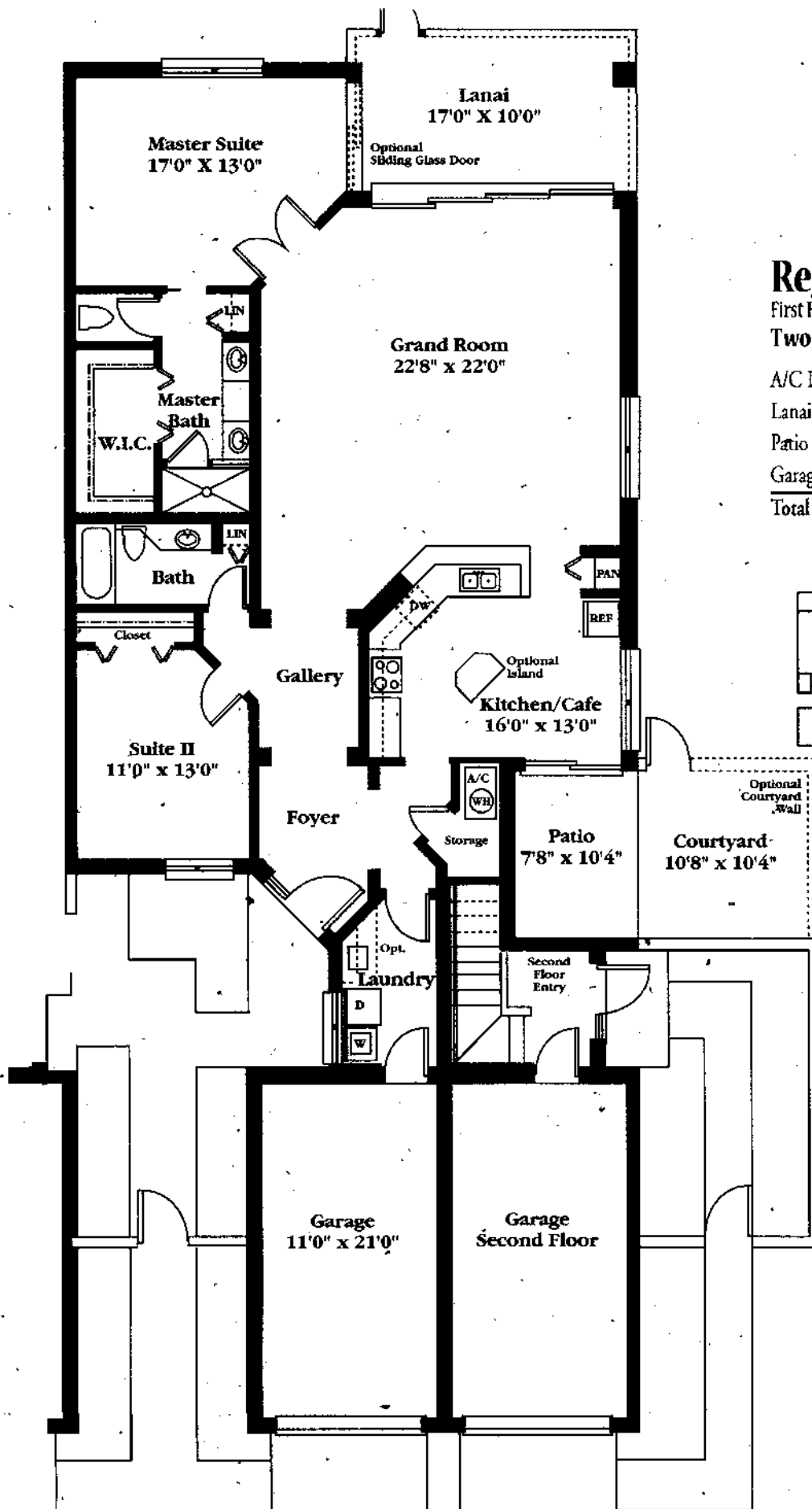
# Regal Home II

Second Floor

Two Bedroom / Two Bath /  
Leisure Room

A/C Living Area	.....	1,928 Sq. Ft.
Lanai	.....	170 Sq. Ft.
Balcony	.....	79 Sq. Ft.
Garage	.....	231 Sq. Ft.
<b>Total</b>	<b>.....</b>	<b>2,408 Sq. Ft.</b>





# Regal Home I

First Floor

Two Bedroom / Two Bath

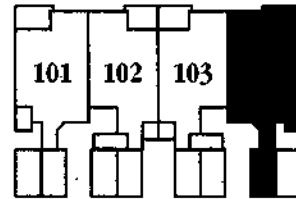
A/C Living Area ..... 1,654 Sq. Ft.

Lanai ..... 170 Sq. Ft.

Patio ..... 79 Sq. Ft.

Garage ..... 231 Sq. Ft.

**Total ..... 2,134 Sq. Ft.**

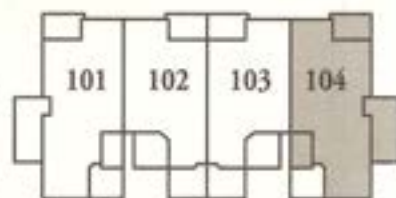
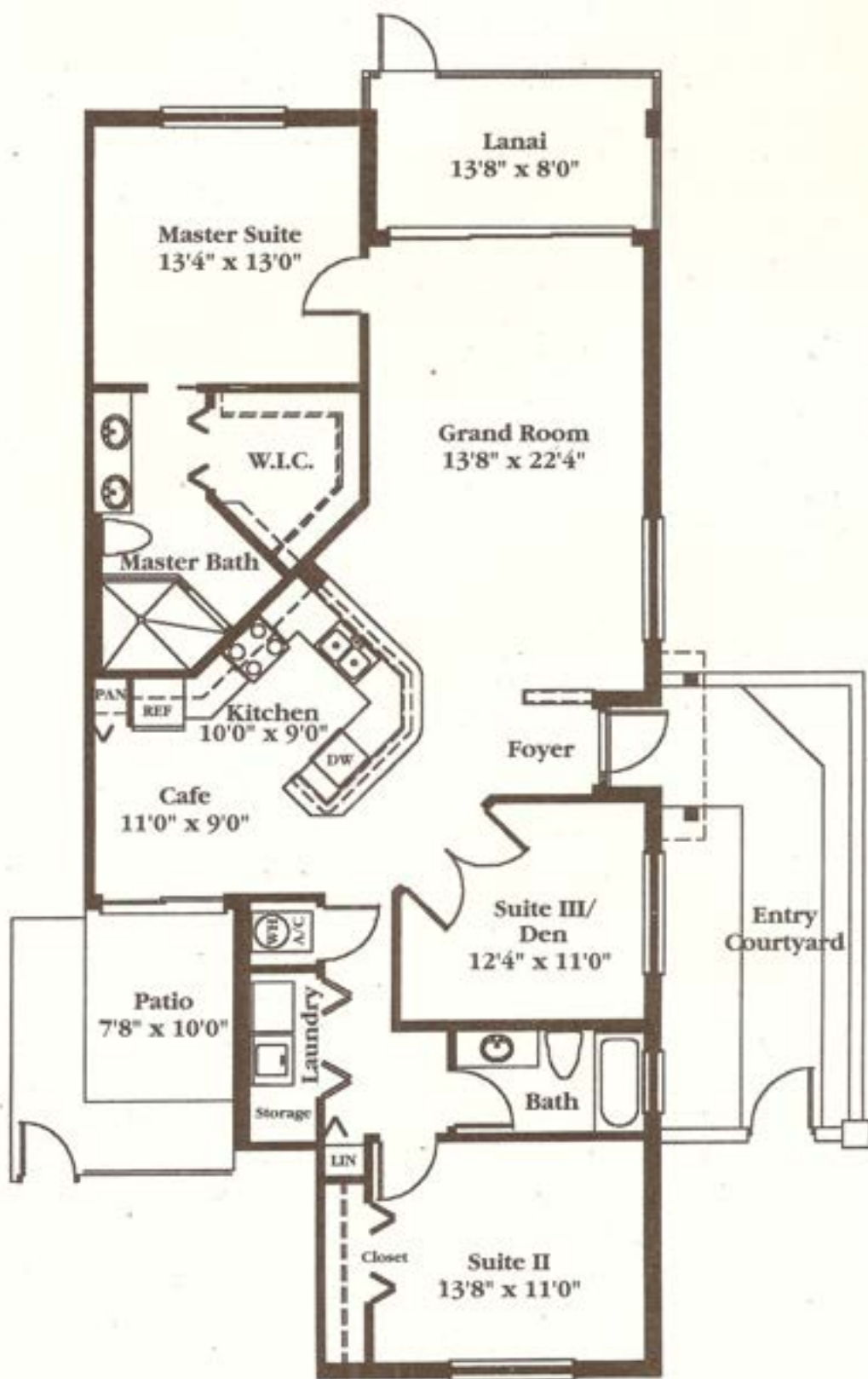




# Village Home I

First Floor  
Two Bedroom/Two Bath/  
Den

A/C Living Area .....1,470 Sq. Ft.  
Lanai .....109 Sq. Ft.  
Patio .....77 Sq. Ft.  
Total .....1,656 Sq. Ft.  
Plus Carport



# Village Home II

Second Floor

**Two Bedroom / Two Bath / Den**

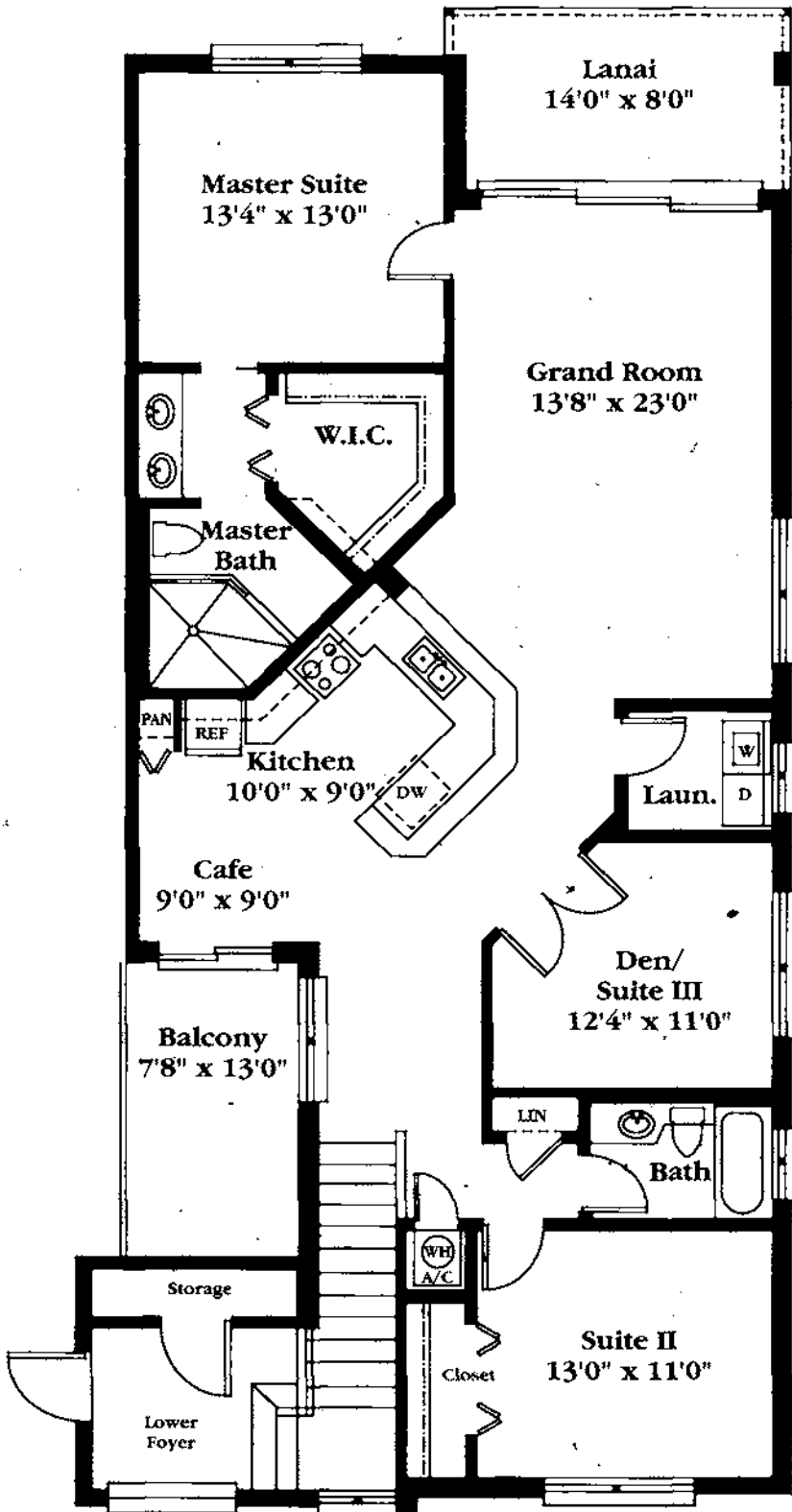
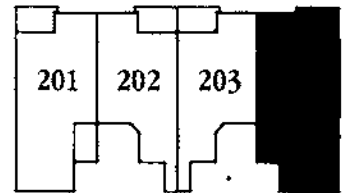
A/C Living Area ..... 1,659 Sq. Ft.

Lanai ..... 112 Sq. Ft.

Balcony ..... 100 Sq. Ft.

Total ..... 1,871 Sq. Ft.

Plus Carport

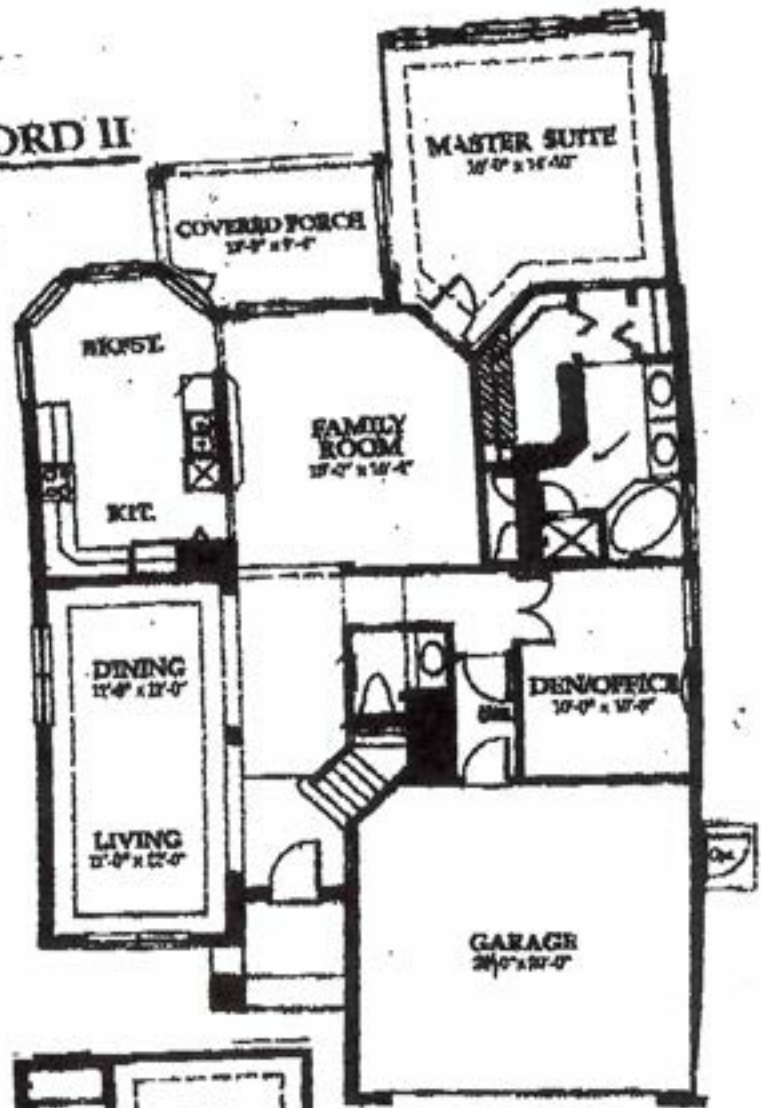


# HARTFORD II

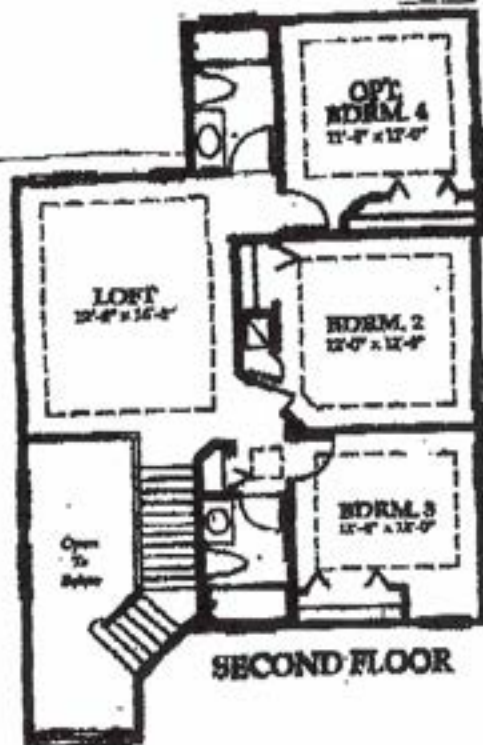
LIVING AREA: LOWER LEVEL 1710  
 UPPER LEVEL 887  
 2597 TOTAL AC AREA

ENTRY 44  
 GARAGE 476  
 LANAI 209  
 COVERED 1298  
 UNCOVERED

4624 TOTAL AREA



FIRST FLOOR



SECOND FLOOR