

Floor Plans

These floor plans have been assembled as a resource for you. They may not be inclusive of every home in the community.

Please note that over time, owners may make modifications to spaces that may not be captured in these original floor plans.

Renderings are not a guarantee of space measurement. Interested parties should verify through their own secured services.

CAYMAS

NAPLES



THE AZURE SERIES

FROM 2,400 TO OVER 3,700 SQUARE FEET ON 62' LOTS

TRANSITIONAL



THE AZURE SERIES

BIRCHWOOD III ELEVATION G

BRITISH WEST INDIES



BIRCHWOOD III ELEVATION A



BIRCHWOOD III ELEVATION D

COASTAL FLORIDA



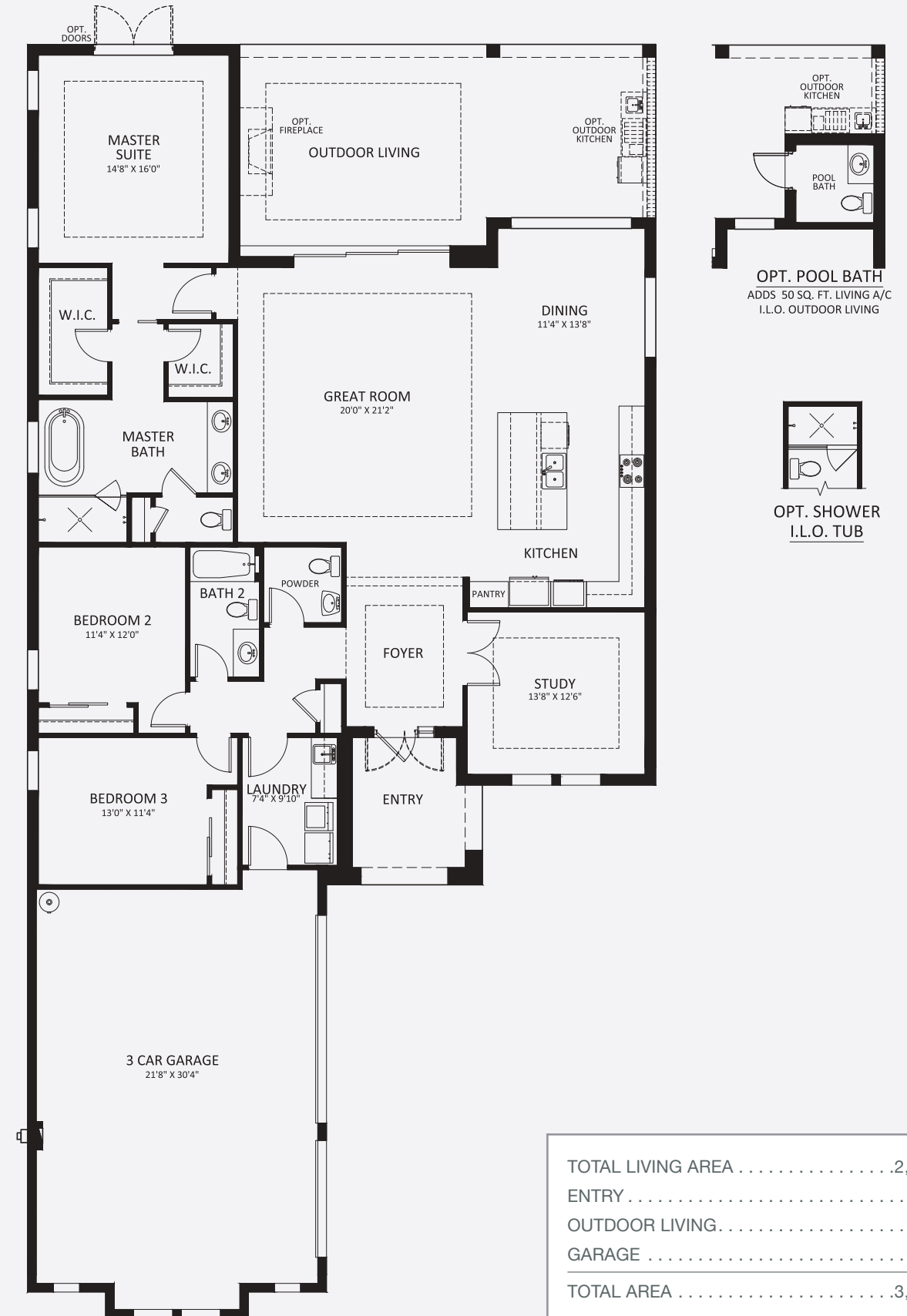
BIRCHWOOD III ELEVATION C



BIRCHWOOD III ELEVATION F

BIRCHWOOD III

THREE BEDROOM, TWO AND 1/2 BATH, GREAT ROOM,
DINING ROOM, STUDY, OUTDOOR LIVING, 3-CAR GARAGE



TRANSITIONAL



THE AZURE SERIES

CAMBRIA III ELEVATION J

BRITISH WEST INDIES



CAMBRIA III ELEVATION A



CAMBRIA III ELEVATION D

COASTAL FLORIDA



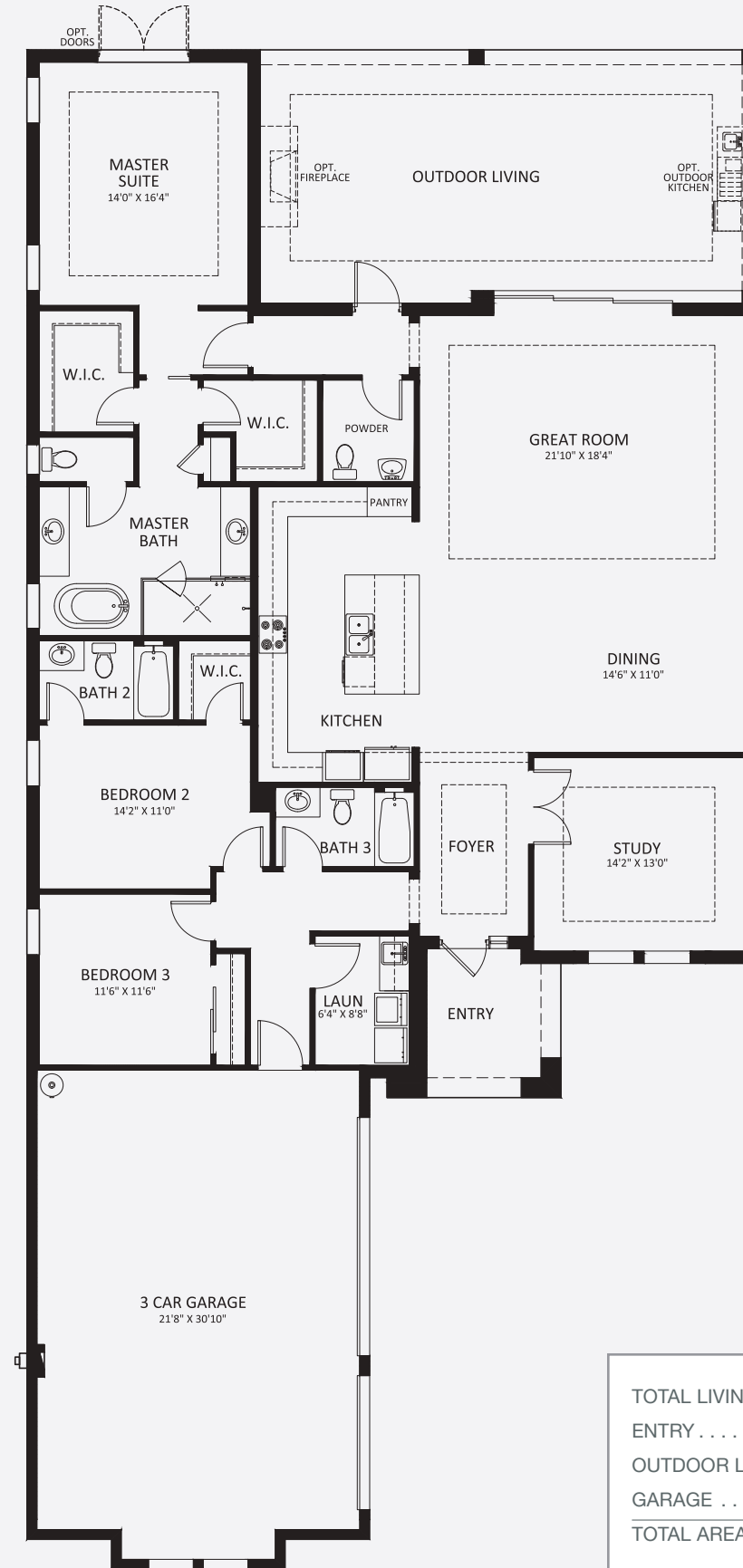
CAMBRIA III ELEVATION C



CAMBRIA III ELEVATION F

CAMBRIA III

THREE BEDROOM, THREE AND 1/2 BATH, GREAT ROOM, DINING ROOM, STUDY, OUTDOOR LIVING, 3-CAR GARAGE



TOTAL LIVING AREA	2,627 sq. ft.
ENTRY	.91 sq. ft.
OUTDOOR LIVING	.567 sq. ft.
GARAGE	.748 sq. ft.
TOTAL AREA	4,033 sq. ft.

TRANSITIONAL



THE AZURE SERIES

EASTON III ELEVATION G

BRITISH WEST INDIES



EASTON III ELEVATION A



EASTON III ELEVATION D

COASTAL FLORIDA



EASTON III ELEVATION C



EASTON III ELEVATION F

EASTON III

FOUR BEDROOM, THREE AND 1/2 BATH, GREAT ROOM, DINING ROOM, STUDY (OPT. FIFTH BEDROOM), OUTDOOR LIVING, 3-CAR GARAGE



TRANSITIONAL



THE AZURE SERIES

MAYFIELD III ELEVATION J

BRITISH WEST INDIES



MAYFIELD III ELEVATION A



MAYFIELD III ELEVATION D

COASTAL FLORIDA



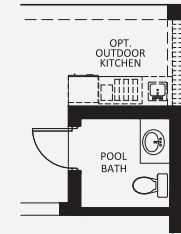
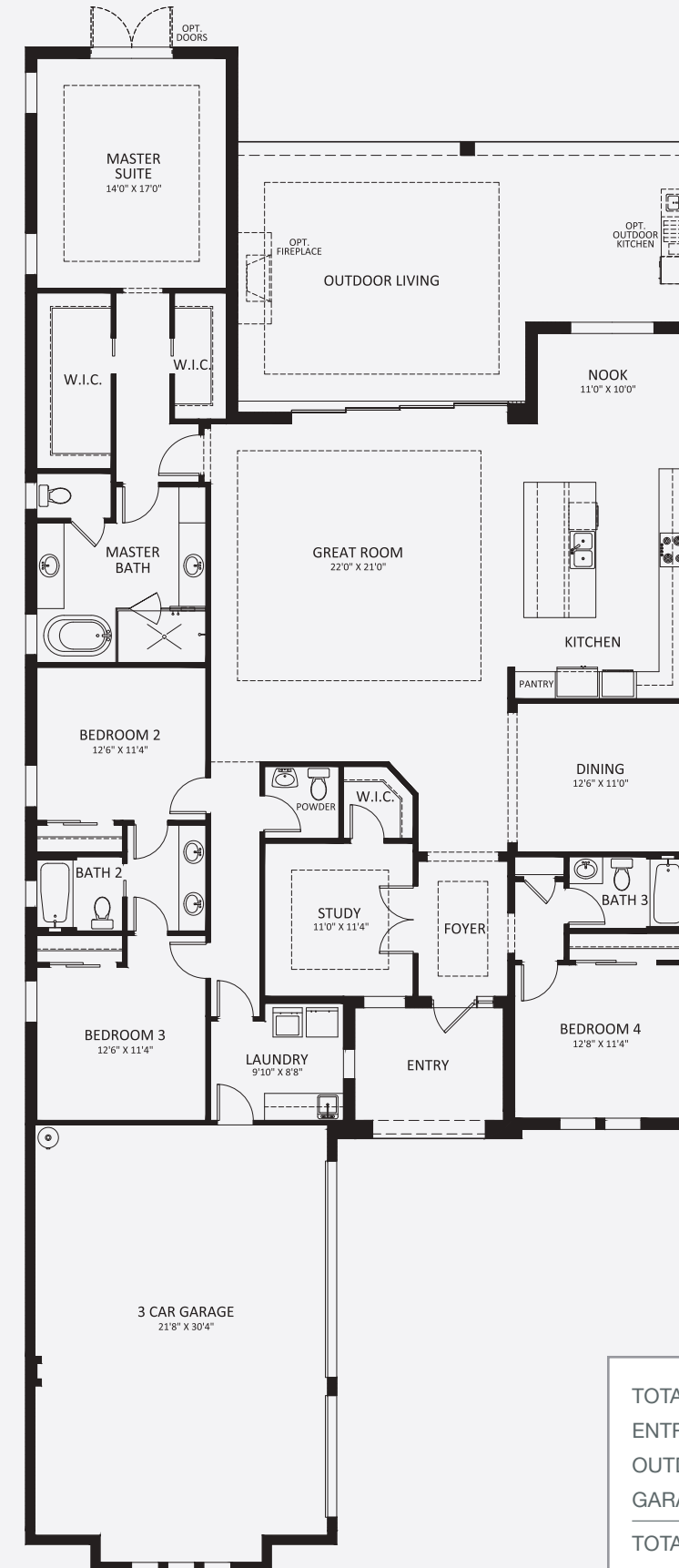
MAYFIELD III ELEVATION C



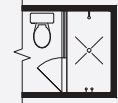
MAYFIELD III ELEVATION F

MAYFIELD III

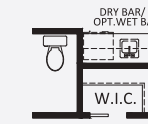
FOUR BEDROOM, THREE AND 1/2 BATH, GREAT ROOM, DINING ROOM, STUDY, OUTDOOR LIVING, 3-CAR GARAGE



OPT. POOL BATH
ADDS 50 SQ. FT. LIVING A/C
I.L.O. OUTDOOR LIVING



OPT. SHOWER
I.L.O. TUB



OPT. BAR

TOTAL LIVING AREA3,033 sq. ft.
ENTRY 109 sq. ft.
OUTDOOR LIVING 596 sq. ft.
GARAGE 740 sq. ft.
TOTAL AREA4,478 sq. ft.

TRANSITIONAL



THE AZURE SERIES

MAYFIELD GRANDE III ELEVATION G

BRITISH WEST INDIES



MAYFIELD GRANDE III ELEVATION A



MAYFIELD GRANDE III ELEVATION D

COASTAL FLORIDA



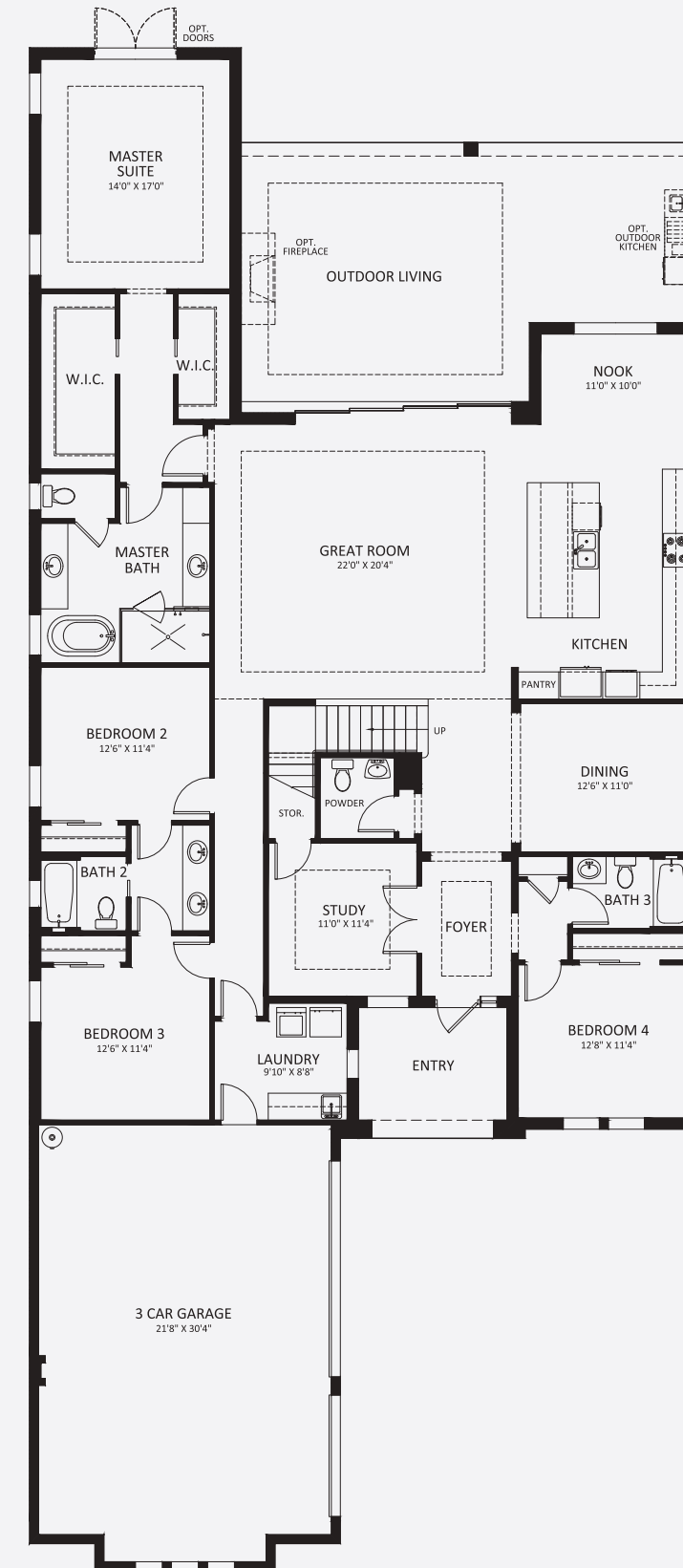
MAYFIELD GRANDE III ELEVATION C



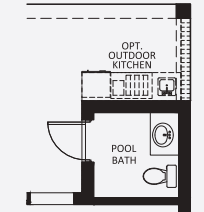
MAYFIELD GRANDE III ELEVATION F

MAYFIELD GRANDE III

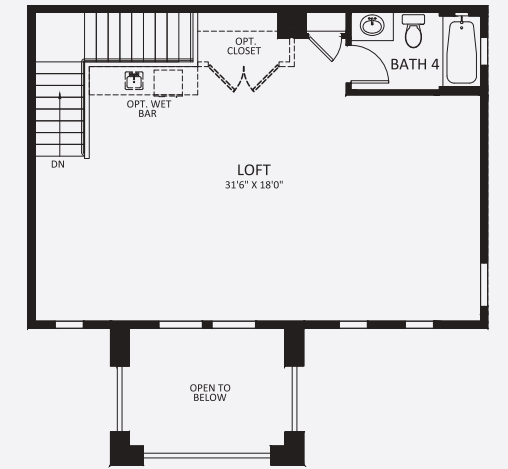
FOUR BEDROOM, FOUR AND 1/2 BATH, GREAT ROOM, DINING ROOM, STUDY, LOFT, OPTIONAL FIFTH BEDROOM, OUTDOOR LIVING, 3-CAR GARAGE



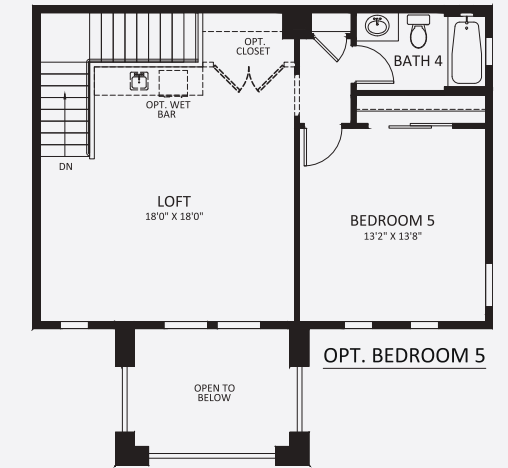
1st FLOOR



OPT. POOL BATH
ADDS 50 SQ. FT. LIVING A/C
I.L.O. OUTDOOR LIVING



OPT. SHOWER
I.L.O. TUB



2nd FLOOR

1ST FLOOR LIVING AREA	3,033 sq. ft.
2ND FLOOR LIVING AREA	669 sq. ft.
TOTAL LIVING AREA	3,702 sq. ft.
ENTRY	109 sq. ft.
OUTDOOR LIVING	596 sq. ft.
GARAGE	740 sq. ft.
TOTAL AREA	5,147 sq. ft.



With distinctive architectural styles, luxurious interiors and extensive options, Stock Luxury Homes' portfolio of residences are inspiring both inside and out. These exceptional residences feature masterful finishes, distinctive interiors and spectacular outdoor living spaces—all the elegant appointments luxury homeowners crave.

As the most respected name in luxury homes in Southwest Florida, Stock Luxury Homes caters to exceptionally sophisticated homebuyers who understand quality and aspire to the extraordinary lifestyle that STOCK has refined and mastered. These are homes of enduring design that bear the signature of a homebuilder with a legacy of excellence.

Now celebrating over 20 years as Southwest Florida's preeminent luxury homebuilder, STOCK has completed more than 6,000 homes in the area's most highly regarded communities, and won more than 500 awards for excellence in construction.

CAYMAS

NAPLES



ORAL REPRESENTATIONS CANNOT BE RELIED UPON AS CORRECTLY STATING THE REPRESENTATIONS OF THE DEVELOPER. FOR CORRECT REPRESENTATIONS REFERENCE SHOULD BE MADE TO THE DOCUMENTS REQUIRED BY SECTION 718.503, FLORIDA STATUTES, TO BE FURNISHED BY A DEVELOPER TO A BUYER OR LESSEE. ALL RENDERINGS AND PLANS ARE PROPOSED CONCEPTS SHOWN ONLY FOR MARKETING PURPOSES AND ARE BASED ON THE DEVELOPER'S CURRENT PRELIMINARY DEVELOPMENT PLAN. DEVELOPER RESERVES THE RIGHT TO MODIFY, REVISE OR WITHDRAW THE PROPOSED DEVELOPMENT PLAN IN DEVELOPER'S SOLE DISCRETION WITHOUT NOTICE. NOTHING HEREIN OR IN ANY OTHER COMMUNICATION SHALL BE DEEMED TO OBLIGATE THE DEVELOPER, OR ANY AFFILIATE OF DEVELOPER, TO CONSTRUCT THE PROJECT OR OFFER ANY OF THE PROJECT FOR SALE, AND NOTHING HEREIN SHALL BE DEEMED A GUARANTY OF ANY KIND. THIS IS NOT AN OFFER TO SALE OR SOLICITATION OF OFFERS TO BUY.

CAYMAS

NAPLES



THE COBALT SERIES

FROM 3,700 TO 4,000 SQUARE FEET ON 90' LOTS

THE COBALT SERIES

BRITISH WEST INDIES



GARDENIA ELEVATION H

BRITISH WEST INDIES



GARDENIA ELEVATION I

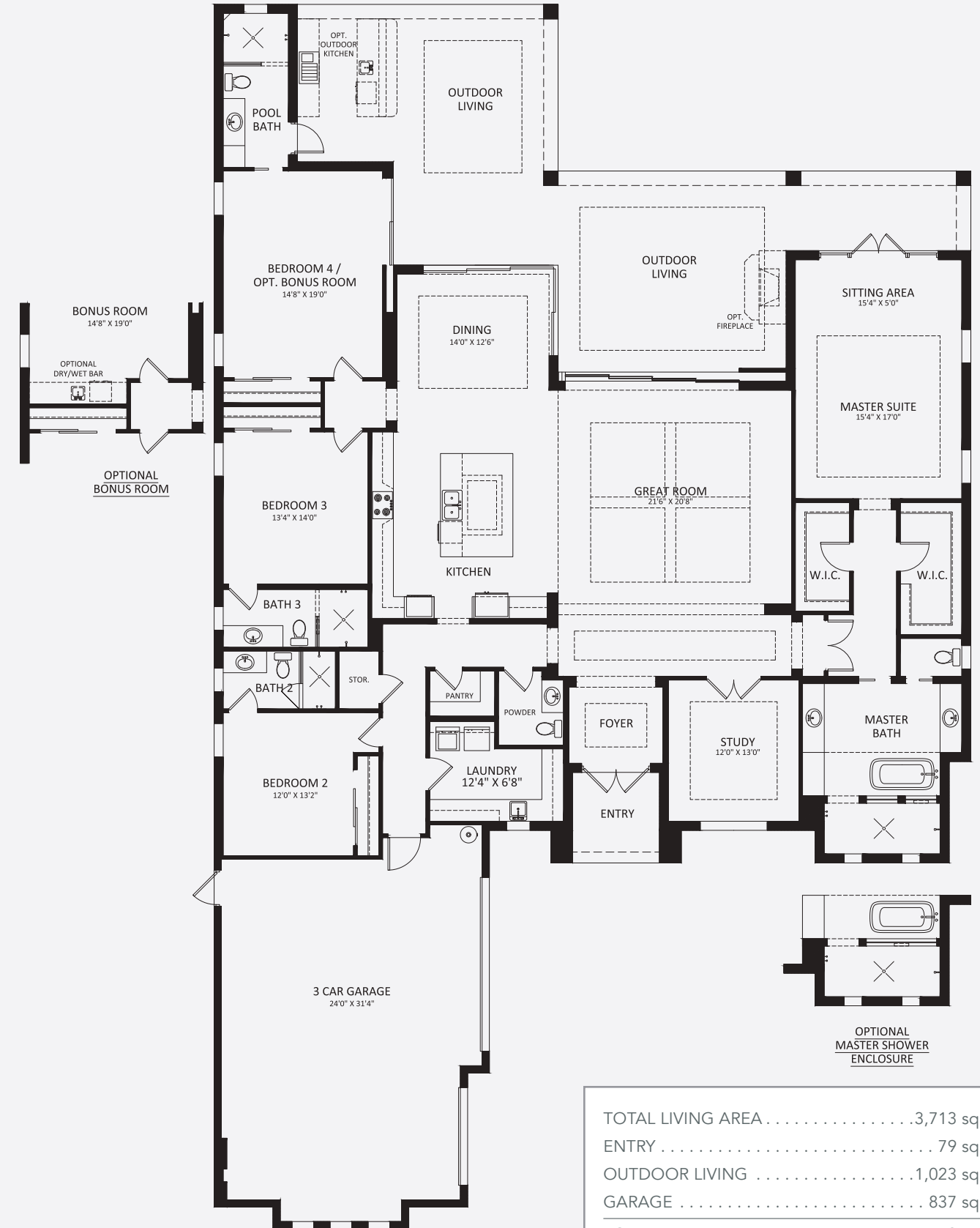
COASTAL FLORIDA



GARDENIA ELEVATION J

GARDENIA

FOUR BEDROOM (OPT. BONUS ROOM), FOUR AND 1/2 BATH, GREAT ROOM, DINING ROOM, STUDY, OUTDOOR LIVING, 3-CAR GARAGE



TOTAL LIVING AREA	3,713 sq. ft.
ENTRY	79 sq. ft.
OUTDOOR LIVING	1,023 sq. ft.
GARAGE	837 sq. ft.
TOTAL AREA	5,652 sq. ft.

THE COBALT SERIES

BRITISH WEST INDIES



MARGO III ELEVATION A

BRITISH WEST INDIES



MARGO III ELEVATION G

COASTAL FLORIDA



MARGO III ELEVATION F

MARGO III

FOUR BEDROOM (OPT. BONUS ROOM), FOUR AND 1/2 BATH, GREAT ROOM, DINING ROOM, STUDY, OUTDOOR LIVING, 3-CAR GARAGE



TOTAL LIVING AREA	3,838 sq. ft.
ENTRY	.66 sq. ft.
OUTDOOR LIVING	1,031 sq. ft.
GARAGE	.796 sq. ft.
TOTAL AREA	5,731 sq. ft.

THE COBALT SERIES

BRITISH WEST INDIES



GARDENIA II ELEVATION A

BRITISH WEST INDIES



GARDENIA II ELEVATION F

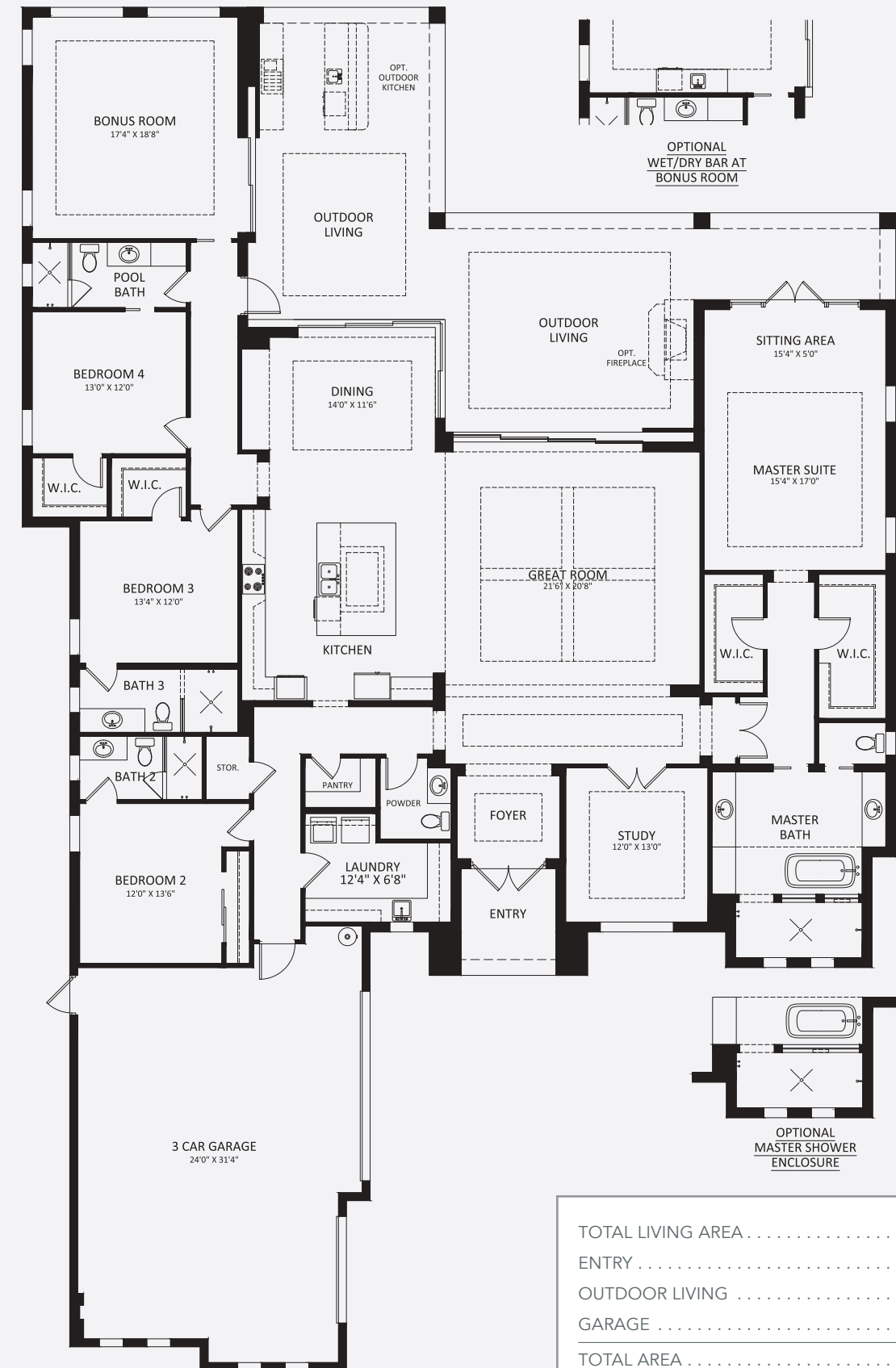
COASTAL FLORIDA



GARDENIA II ELEVATION G

GARDENIA II

FOUR BEDROOM, FOUR AND 1/2 BATH, GREAT ROOM, DINING ROOM, STUDY, BONUS ROOM, OUTDOOR LIVING, 3-CAR GARAGE



TOTAL LIVING AREA	4,000 sq. ft.
ENTRY	.92 sq. ft.
OUTDOOR LIVING	.980 sq. ft.
GARAGE	.838 sq. ft.
TOTAL AREA	5,910 sq. ft.



With distinctive architectural styles, luxurious interiors and extensive options, Stock Luxury Homes' portfolio of residences are inspiring both inside and out. These exceptional residences feature masterful finishes, distinctive interiors and spectacular outdoor living spaces—all the elegant appointments luxury homeowners crave.

As the most respected name in luxury homes in Southwest Florida, Stock Luxury Homes caters to exceptionally sophisticated homebuyers who understand quality and aspire to the extraordinary lifestyle that STOCK has refined and mastered. These are homes of enduring design that bear the signature of a homebuilder with a legacy of excellence.

Now celebrating over 20 years as Southwest Florida's preeminent luxury homebuilder, STOCK has completed more than 6,000 homes in the area's most highly regarded communities, and won more than 500 awards for excellence in construction.

CAYMAS

NAPLES



ORAL REPRESENTATIONS CANNOT BE RELIED UPON AS CORRECTLY STATING THE REPRESENTATIONS OF THE DEVELOPER. FOR CORRECT REPRESENTATIONS REFERENCE SHOULD BE MADE TO THE DOCUMENTS REQUIRED BY SECTION 718.503, FLORIDA STATUTES, TO BE FURNISHED BY A DEVELOPER TO A BUYER OR LESSEE. ALL RENDERINGS AND PLANS ARE PROPOSED CONCEPTS SHOWN ONLY FOR MARKETING PURPOSES AND ARE BASED ON THE DEVELOPER'S CURRENT PRELIMINARY DEVELOPMENT PLAN. DEVELOPER RESERVES THE RIGHT TO MODIFY, REVISE OR WITHDRAW THE PROPOSED DEVELOPMENT PLAN IN DEVELOPER'S SOLE DISCRETION WITHOUT NOTICE. NOTHING HEREIN OR IN ANY OTHER COMMUNICATION SHALL BE DEEMED TO OBLIGATE THE DEVELOPER, OR ANY AFFILIATE OF DEVELOPER, TO CONSTRUCT THE PROJECT OR OFFER ANY OF THE PROJECT FOR SALE, AND NOTHING HEREIN SHALL BE DEEMED A GUARANTY OF ANY KIND. THIS IS NOT AN OFFER TO SALE OR SOLICITATION OF OFFERS TO BUY.

CAYMAS

NAPLES



THE INDIGO SERIES

FROM 2,700 TO OVER 3,300 SQUARE FEET ON 76' LOTS

TRANSITIONAL



THE INDIGO SERIES

COVINGTON III ELEVATION J

BRITISH WEST INDIES



COVINGTON III ELEVATION A



COVINGTON III ELEVATION D

COASTAL FLORIDA



COVINGTON III ELEVATION C



COVINGTON III ELEVATION F

COVINGTON III

THREE BEDROOM, THREE BATH, GREAT ROOM, DINING ROOM, STUDY, OPTIONAL BONUS ROOM, OUTDOOR LIVING, 3-CAR GARAGE



TOTAL LIVING AREA2,743 sq. ft.
ENTRY 94 sq. ft.
OUTDOOR LIVING 981 sq. ft.
GARAGE 782 sq. ft.
TOTAL AREA4,600 sq. ft.
WITH OPTIONAL BONUS ROOM	
TOTAL LIVING AREA3,138 sq. ft.
OUTDOOR LIVING 769 sq. ft.
TOTAL AREA4,783 sq. ft.

TRANSITIONAL



THE INDIGO SERIES

MADISON II ELEVATION W

BRITISH WEST INDIES



MADISON II ELEVATION L



MADISON II ELEVATION O

COASTAL FLORIDA



MADISON II ELEVATION M



MADISON II ELEVATION P

MADISON II

FOUR BEDROOM (OPT. BONUS ROOM), FOUR AND 1/2 BATH, GREAT ROOM, DINING ROOM, STUDY, OUTDOOR LIVING, 3-CAR GARAGE



TOTAL LIVING AREA	3,054 sq. ft.
ENTRY83 sq. ft.
OUTDOOR LIVING856 sq. ft.
GARAGE784 sq. ft.
TOTAL AREA	4,777 sq. ft.

TRANSITIONAL



THE INDIGO SERIES

CHANDLER ELEVATION P

BRITISH WEST INDIES



CHANDLER ELEVATION F



CHANDLER ELEVATION G

COASTAL FLORIDA



CHANDLER ELEVATION H



CHANDLER ELEVATION J

CHANDLER

FOUR BEDROOM (OPT. BONUS ROOM), FOUR AND 1/2 BATH, GREAT ROOM, DINING ROOM, STUDY, OUTDOOR LIVING, 3-CAR GARAGE



TOTAL LIVING AREA	3,136 sq. ft.
ENTRY	177 sq. ft.
OUTDOOR LIVING	782 sq. ft.
GARAGE	790 sq. ft.
TOTAL AREA	4,885 sq. ft.



With distinctive architectural styles, luxurious interiors and extensive options, Stock Luxury Homes' portfolio of residences are inspiring both inside and out. These exceptional residences feature masterful finishes, distinctive interiors and spectacular outdoor living spaces—all the elegant appointments luxury homeowners crave.

As the most respected name in luxury homes in Southwest Florida, Stock Luxury Homes caters to exceptionally sophisticated homebuyers who understand quality and aspire to the extraordinary lifestyle that STOCK has refined and mastered. These are homes of enduring design that bear the signature of a homebuilder with a legacy of excellence.

Now celebrating over 20 years as Southwest Florida's preeminent luxury homebuilder, STOCK has completed more than 6,000 homes in the area's most highly regarded communities, and won more than 500 awards for excellence in construction.

CAYMAS

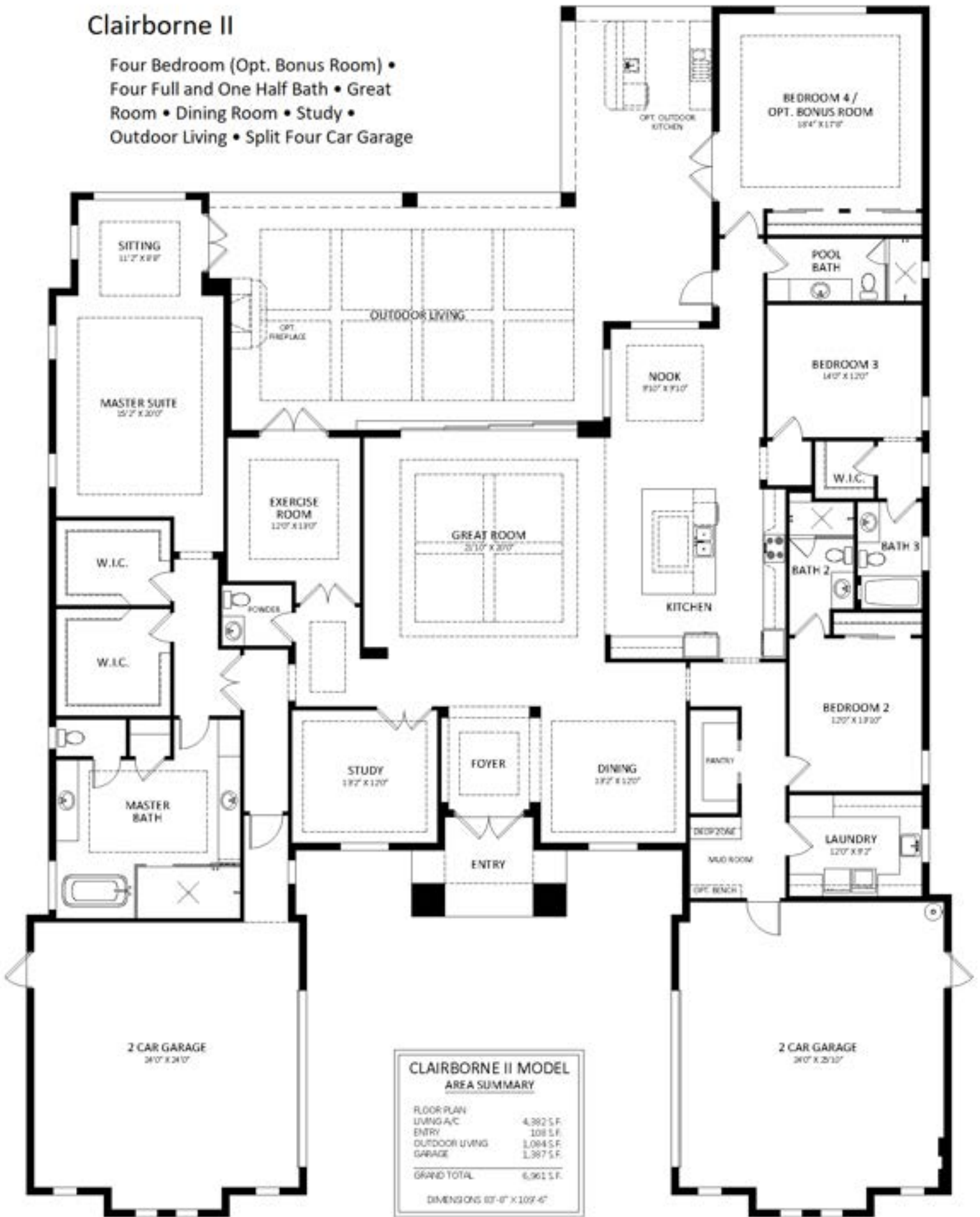
NAPLES



ORAL REPRESENTATIONS CANNOT BE RELIED UPON AS CORRECTLY STATING THE REPRESENTATIONS OF THE DEVELOPER. FOR CORRECT REPRESENTATIONS REFERENCE SHOULD BE MADE TO THE DOCUMENTS REQUIRED BY SECTION 718.503, FLORIDA STATUTES, TO BE FURNISHED BY A DEVELOPER TO A BUYER OR LESSEE. ALL RENDERINGS AND PLANS ARE PROPOSED CONCEPTS SHOWN ONLY FOR MARKETING PURPOSES AND ARE BASED ON THE DEVELOPER'S CURRENT PRELIMINARY DEVELOPMENT PLAN. DEVELOPER RESERVES THE RIGHT TO MODIFY, REVISE OR WITHDRAW THE PROPOSED DEVELOPMENT PLAN IN DEVELOPER'S SOLE DISCRETION WITHOUT NOTICE. NOTHING HEREIN OR IN ANY OTHER COMMUNICATION SHALL BE DEEMED TO OBLIGATE THE DEVELOPER, OR ANY AFFILIATE OF DEVELOPER, TO CONSTRUCT THE PROJECT OR OFFER ANY OF THE PROJECT FOR SALE, AND NOTHING HEREIN SHALL BE DEEMED A GUARANTY OF ANY KIND. THIS IS NOT AN OFFER TO SALE OR SOLICITATION OF OFFERS TO BUY.

Clairborne II

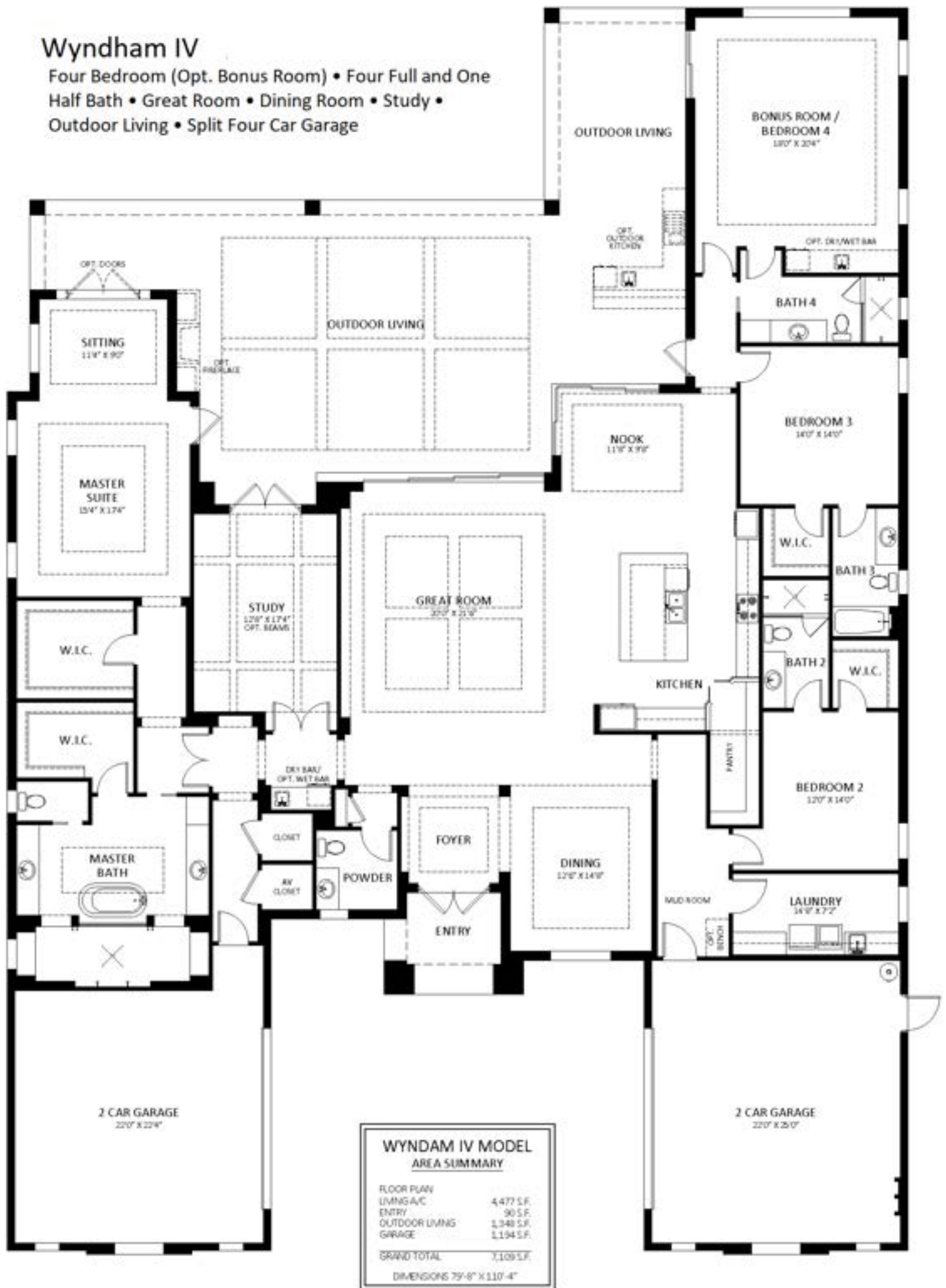
- Four Bedroom (Opt. Bonus Room) •
- Four Full and One Half Bath • Great Room • Dining Room • Study •
- Outdoor Living • Split Four Car Garage



CLAIRBORNE II MODEL AREA SUMMARY	
FLOOR PLAN	
LIVING A/C	4,382 S.F.
ENTRY	108 S.F.
OUTDOOR LIVING	1,084 S.F.
GARAGE	1,387 S.F.
GRAND TOTAL	6,961 S.F.
DIMENSIONS 63'-0" X 102'-4"	

Wyndham IV

Four Bedroom (Opt. Bonus Room) • Four Full and One Half Bath • Great Room • Dining Room • Study • Outdoor Living • Split Four Car Garage



WYNDHAM IV MODEL AREA SUMMARY	
FLOOR PLAN	
LIVING A/C	4,477 S.F.
ENTRY	90 S.F.
OUTDOOR LIVING	1,348 S.F.
GARAGE	1,194 S.F.
GRAND TOTAL	7,109 S.F.
DIMENSIONS 79'-6" X 110'-4"	

CAYMAS – PULTE FLOOR PLANS – COMING SOON

- Pulte Homes has 87 homesites in Caymas that will have four floor plans to choose from. They will build two models in the community (the Brixton and the Regency Grande),
- The Brixton - single-story, 3-bed+den/ 3-bath home with just under 3,000 sqf of air-conditioned living space.
- The Regency Grande - two-story, 5 bed+den+loft/ 4 full-bath/2 half-bath home with more than 4,100 sqf of air-conditioned living space.