

Floor Plans

These floor plans have been assembled as a resource for you. They may not be inclusive of every home in the community.

Please note that over time, owners may make modifications to spaces that may not be captured in these original floor plans.

Renderings are not a guarantee of space measurement. Interested parties should verify through their own secured services.



 Manor Series

 Estate Series

 Premier Series

 Future Development



Pulte.com/Greyhawk

More Life Built In®

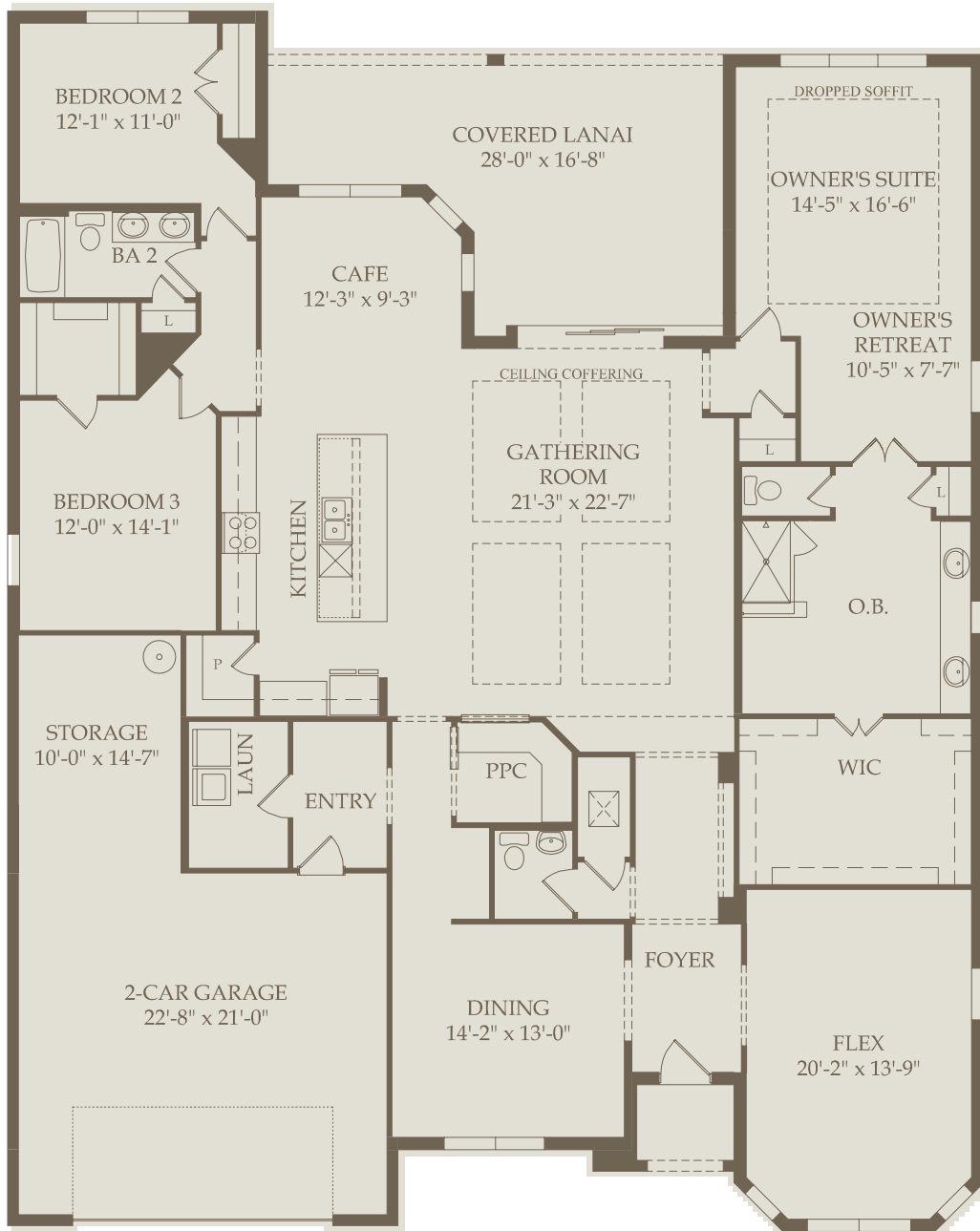
Map not to scale. Artists Conception: These drawings are conceptual only and should not be relied upon as a representation, express or implied of the final detail. The developer expressly reserves the right to make modifications, revisions, and changes which it deems desirable in its sole and absolute discretion. ©2018 Pulte Home Company, LLC. All Rights Reserved. CBC057850 7-18 18





ABBEEVILLE

Floor 1



Options not selected include : 4' Garage Extension, Sink at Garage, Shower at Bath 2, Shower at Bath 3, Covered Lanai Extension, Patio Extension, Pool Bath, Cabinets at Pool Bath, Interior Door & Knee Wall at Pool Bath, Outdoor Kitchen Prep, Den in Lieu of Dining Room, Dropped Soffit at Den in Lieu of Dining Room, Drop Zone 1 at Entry, Drop Zone 2 at Entry, Bedroom 4, Den, Dropped Soffit at Den, Enlarged Door at Gathering Room, Built-In Appliances at Kitchen, Cabinets & Sink at Laundry, Shower Seat at Owner's Bath, Tub Upgrade at Owner's Bath, Walk-In Shower at Owner's Bath, Wet Bar at Owner's Retreat, Door at Owner's Suite, Closet Storage, Stairs to Loft, Cabinets at Pulte Planning Center, Entertainment Package, Service Door, Island at Walk-In Closet, Shower at Bath 4, Loft w/Bed & Bath

For this application, the company does not warrant or assume any legal liability or responsibility for the accuracy, completeness, or usefulness of any information, apparatus, product, or process disclosed. Base floor plan subject to change based on elevation selected.



CLUBVIEW

*Elevation FM2A shown. Room dimensions, square footage and window sizes and locations may vary based on elevation selection.

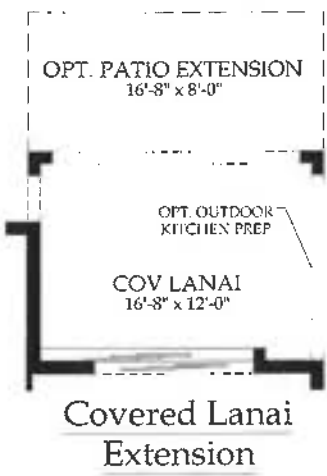
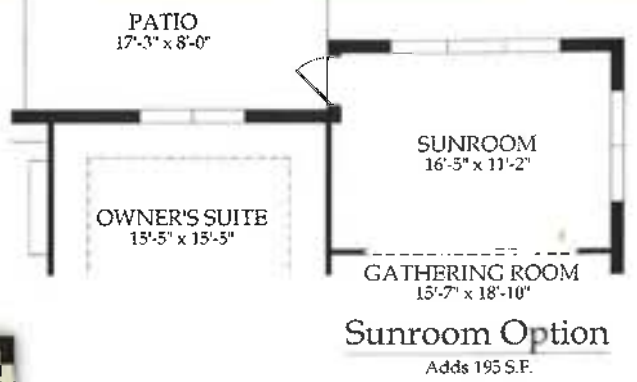
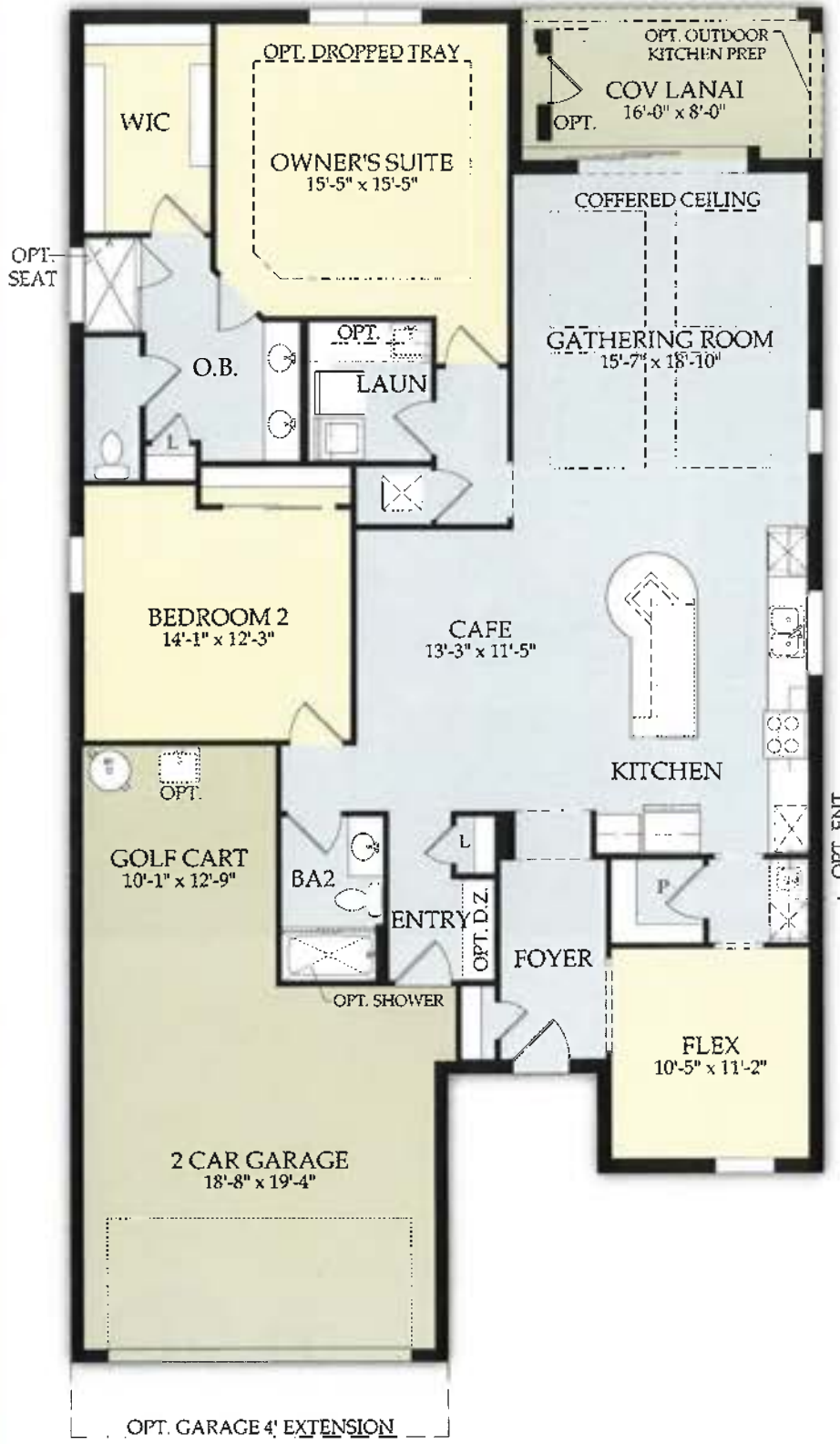


INFINITY

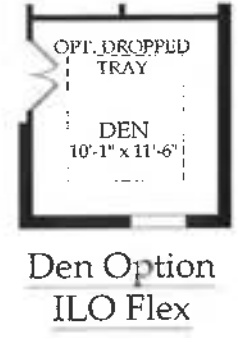
*Elevation KW2A shown. Room dimensions, square footage and window sizes and locations may vary based on elevation selection.

Martin Ray

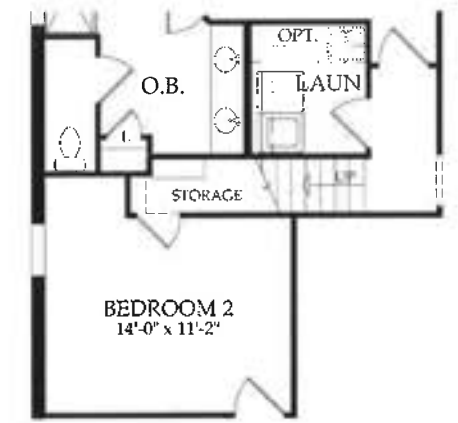
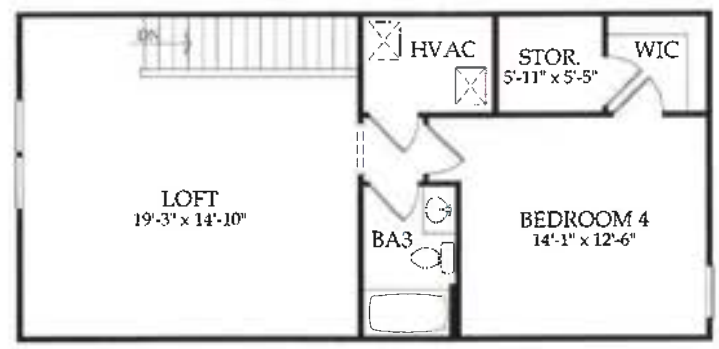
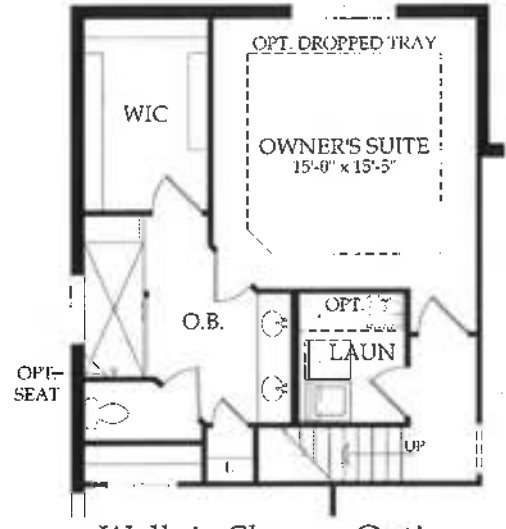
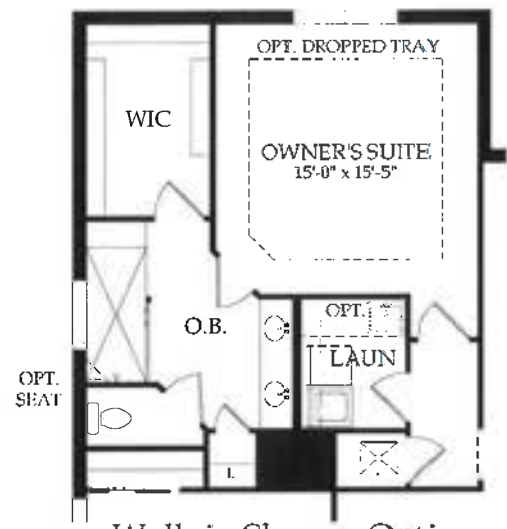
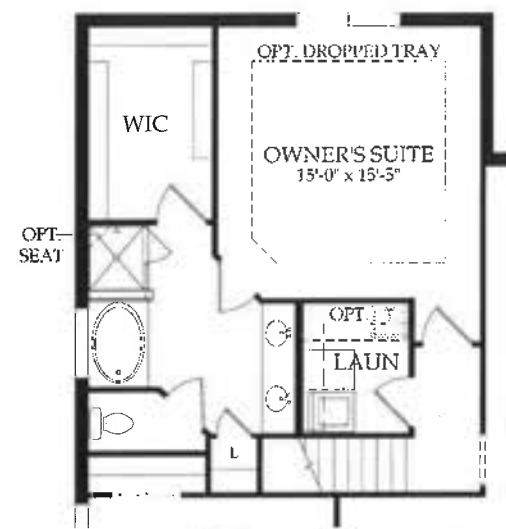
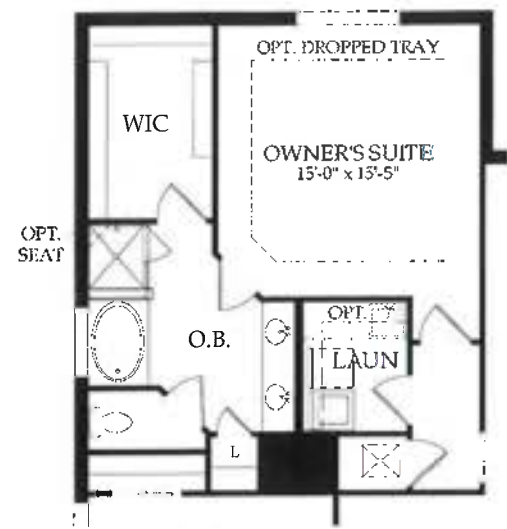
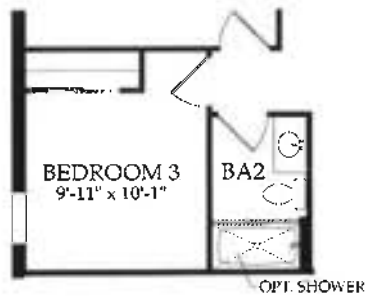
- 1,968 - 3,016 A/C Sq. Ft.
- 2 - 4 Bedrooms
- 2 - 3 Baths



Kitchen with Built-In Appliances



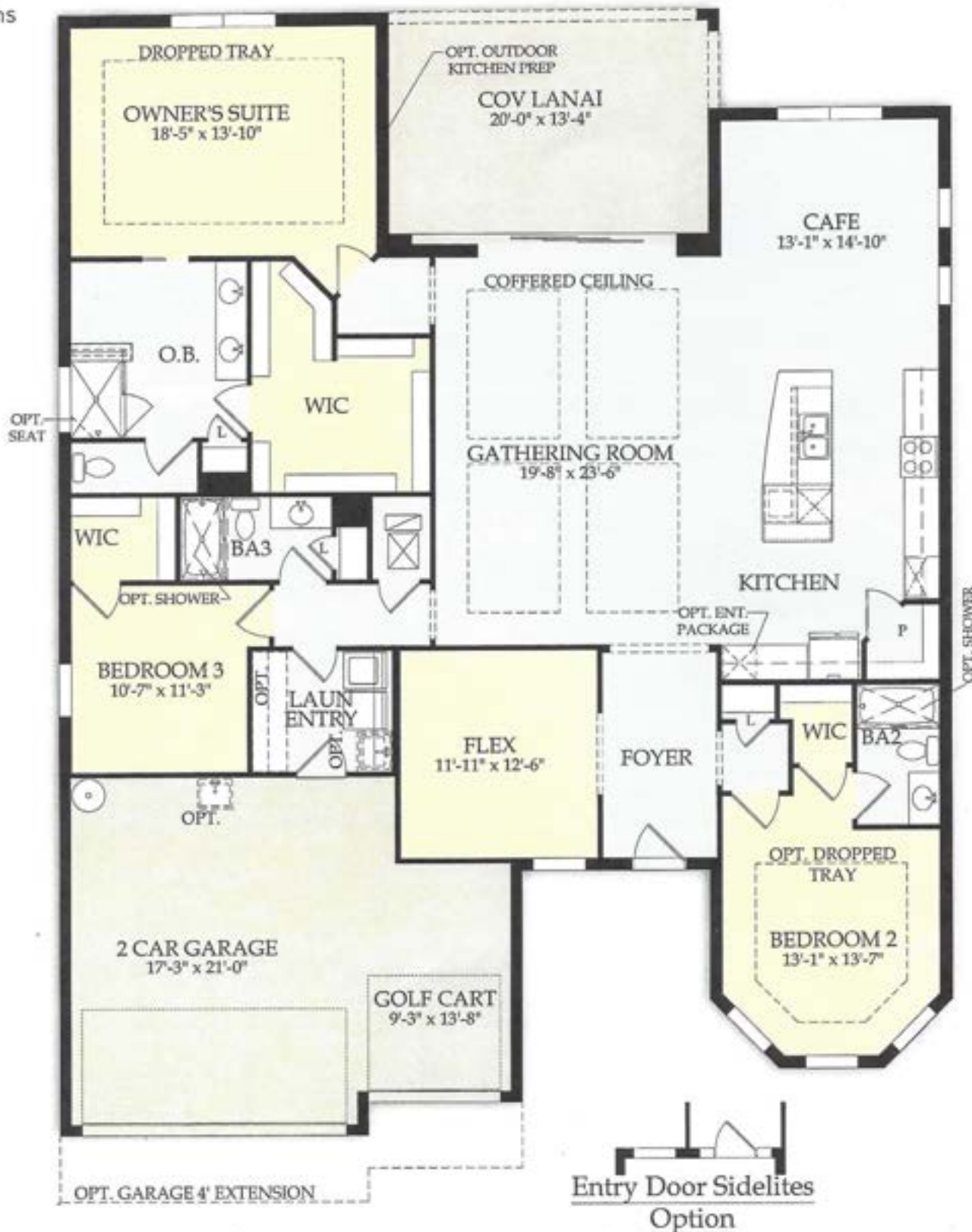
Lower DW Option



*Elevation FM2A shown. Room dimensions, square footage and window sizes and locations may vary based on elevation selection.

Pinnacle

- 2,488 - 3,656 A/C Sq. Ft.
- 3 - 4 Bedrooms
- 3 - 4 Baths



*Elevation FM2A shown. Room dimensions, square footage and window sizes and locations may vary based on elevation selection.

ESTATE & PREMIER SERIES
STONEWATER

2,852 - 3,905 A/C Sq. Ft.
 3 - 4 Bedrooms | 3 - 4.5 Baths



Elevation FM2A



Elevation FM3A



Elevation LC2A



Elevation LC3A



Elevation C3A



*Elevation FM2A shown. Room dimensions, square footage and window sizes and locations may vary based on elevation selection.

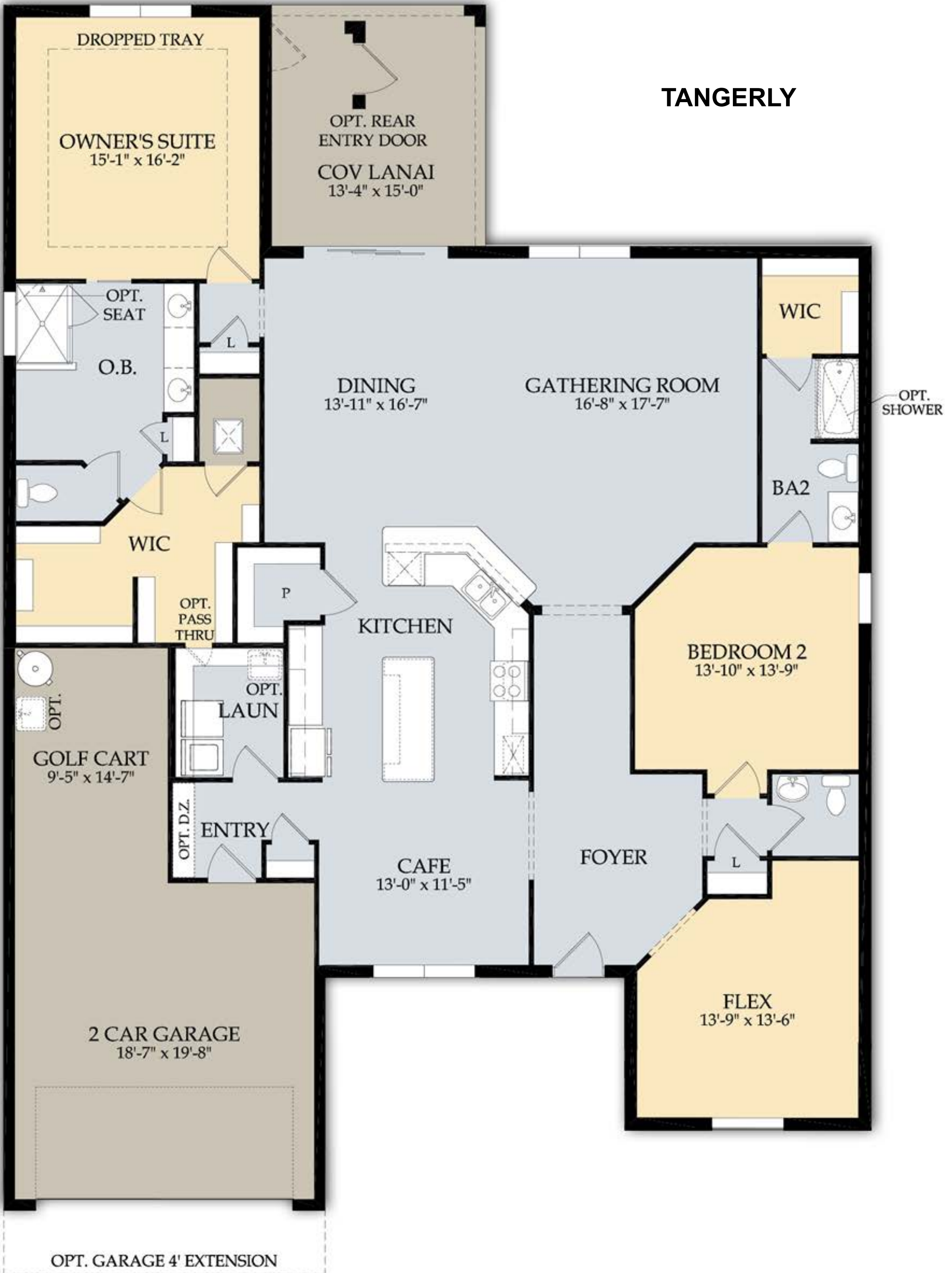
Artist's renderings are conceptual only and are not intended to be an exact representation or show specific detailing. Square footage, room dimensions and spatial arrangements on this plan are approximate and may vary in final construction and may vary by elevation. See a sales representative for details. ©2017 Pulte Home Company, LLC. CBC057850 GCE 12-21-67





SUMMERVILLE

TANGERLY



*Elevation KW2A shown. Room dimensions, square footage and window sizes and locations may vary based on elevation selection.