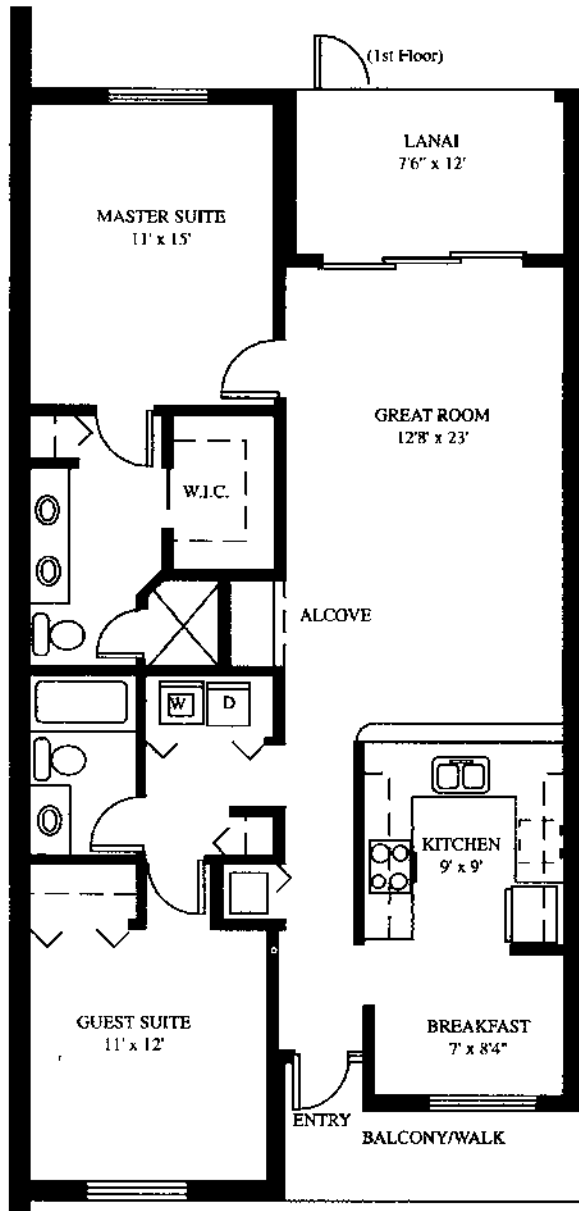


## Floor Plans

These floor plans have been assembled as a resource for you. They may not be inclusive of every home in the community.

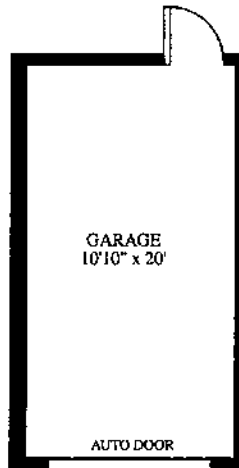
Please note that over time, owners may make modifications to spaces that may not be captured in these original floor plans.

Renderings are not a guarantee of space measurement. Interested parties should verify through their own secured services.



## The Windsor

A/C LIVING AREA	1,115	SQ.FT.
ENTRY	30	SQ.FT.
LANAI	95	SQ.FT.
GARAGE	226	SQ.FT.
<b>TOTAL AREA</b>	<b>1,466</b>	<b>SQ.FT.</b>



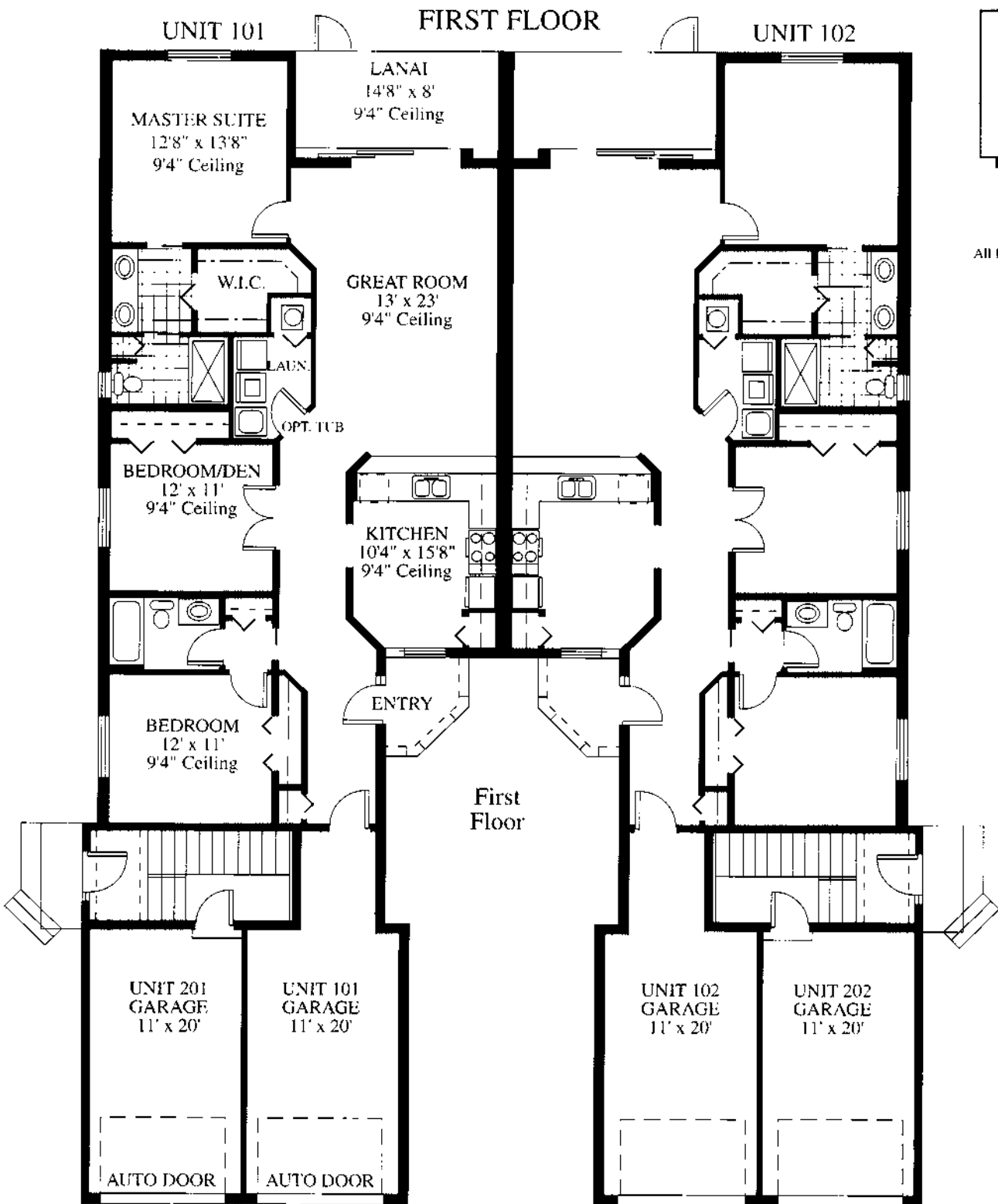
# The Village



# The Locksley

A/C LIVING AREA	1,225	SQ.FT.
ENTRY	20	SQ.FT.
LANAI	105	SQ.FT.
GARAGE	226	SQ.FT.
<b>TOTAL AREA</b>	<b>1,576</b>	<b>SQ.FT.</b>

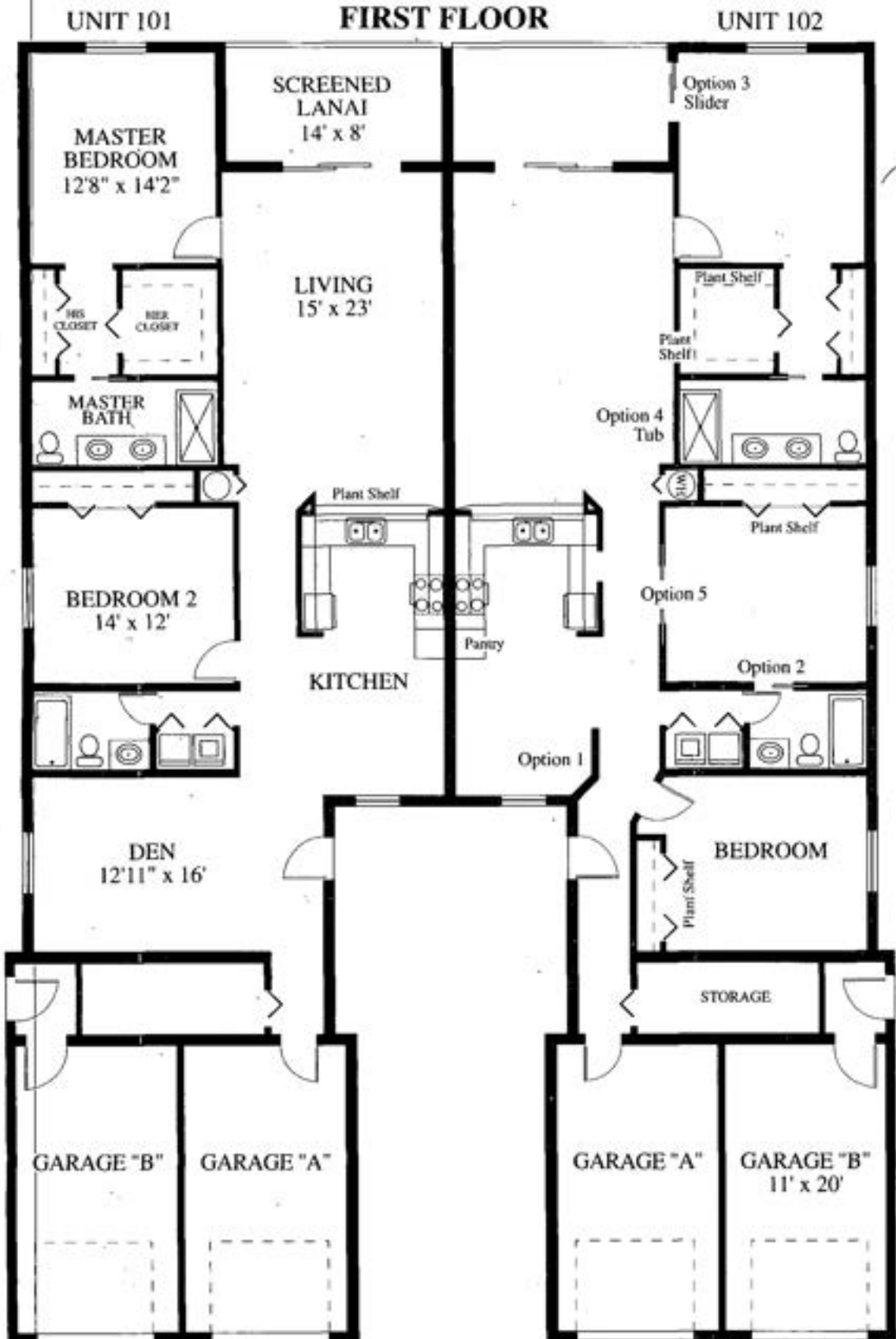
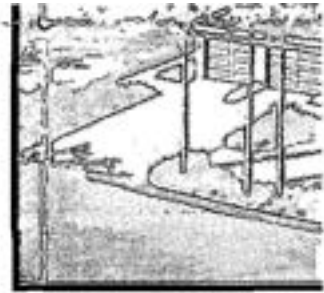




A/C LIVING AREA	1,413	SQ.FT.
ENTRY	40	SQ.FT.
LANAI	128	SQ.FT.
GARAGE	282	SQ.FT.
<b>TOTAL AREA</b>	<b>1,863</b>	<b>SQ.FT.</b>

# The Ivy

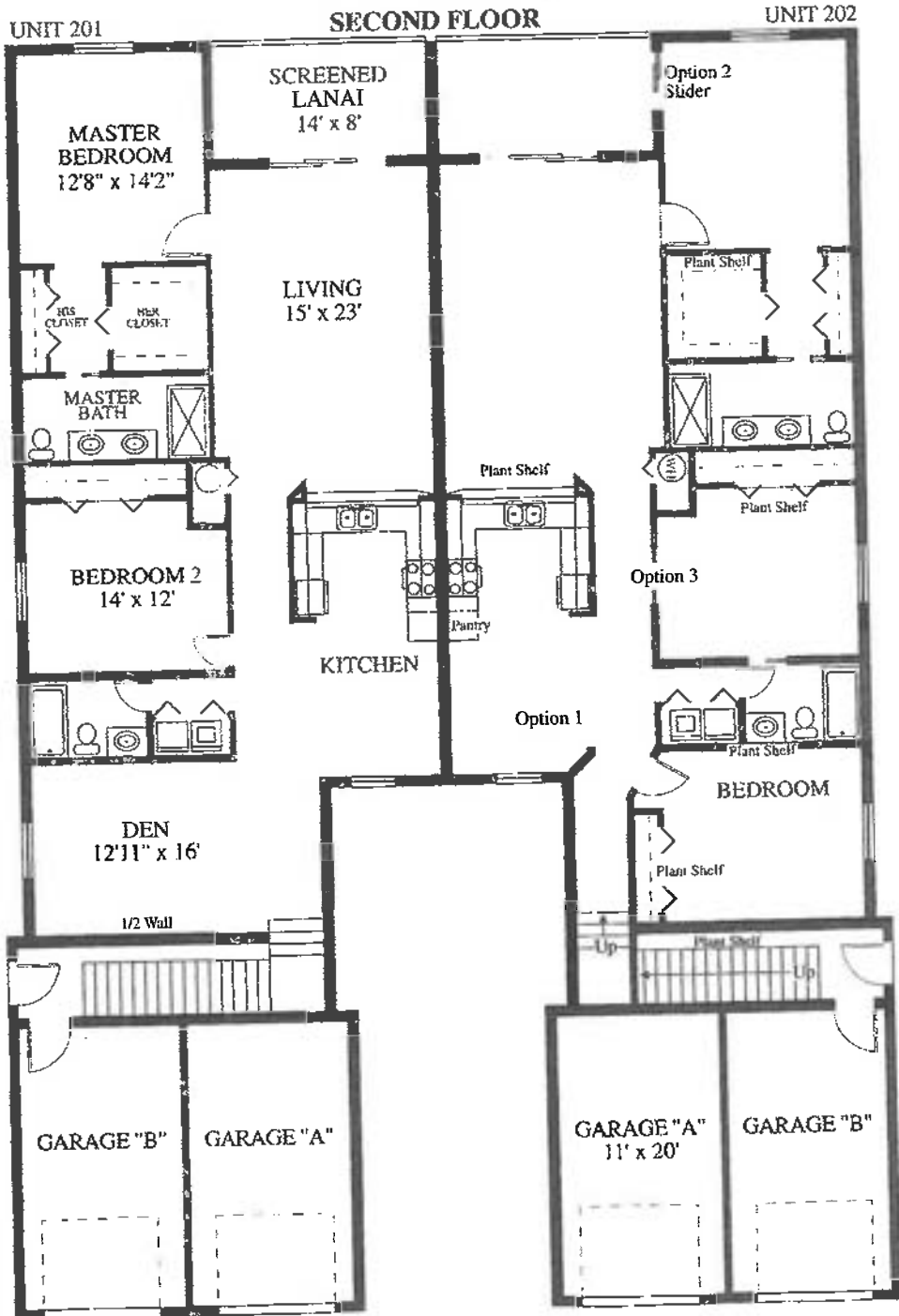
A/C LIVING AREA	1,630 SQ. FT.
LANAI	120 SQ. FT.
ENTRY	40 SQ. FT.
GARAGE	250 SQ. FT.
<b>TOTAL AREA</b>	<b>2,040 SQ. FT.</b>





# The Jasmine

A/C LIVING AREA	1,656 SQ.FT.
LANAI	120 SQ.FT.
ENTRY	40 SQ.FT.
GARAGE	250 SQ.FT.
<b>TOTAL AREA</b>	<b>2,066 SQ.FT.</b>



### Sherwood I

13 Bldgs 104 units (pink tint)

145 225 305

161 241 321

177 257 337

193 273

209 289

### Sherwood II (white tint)

11 Bldgs 44 units

230 270 310

240 280 320

250 290 330

260 300

### Sherwood III

8 Bldgs 32 units (blue tint)

340 380

350 390

360 400

370 410

### Sherwood IV

13 Bldgs 52 units (green tint)

420 470 501

430 480 509

440 490 517

450 500

460 510

### Sherwood V

12 Bldgs 48 units (yellow tint)

351 395

357 425

365 445

371 455

377 465

385 475

### Sherwood VI

7 Bldgs 56 units (purple tint)

411 422

412 431

416 432

421

Summary: 64 Bldgs 336 units

20 8-plexes + 44 4-plexes

### Sherwood Master

2 Pools 5 Lakes 8 fountains

1 Clubhouse 2 Tennis courts

Gatehouse / no gate

