

## Floor Plans

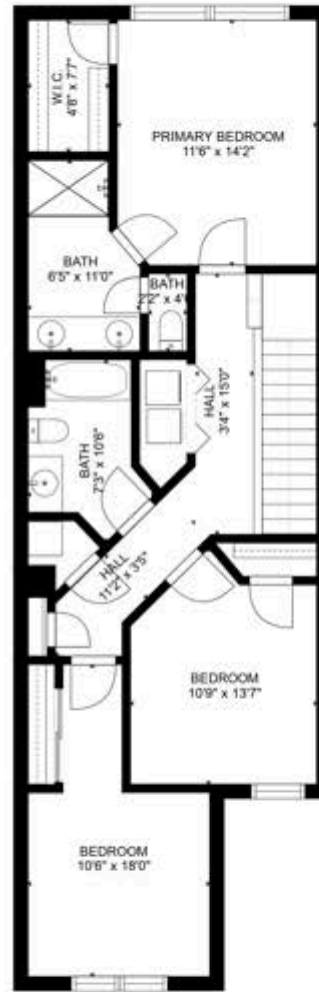
These floor plans have been assembled as a resource for you. They may not be inclusive of every home in the community.

Please note that over time, owners may make modifications to spaces that may not be captured in these original floor plans.

Renderings are not a guarantee of space measurement. Interested parties should verify through their own secured services.



FLOOR 1



FLOOR 2

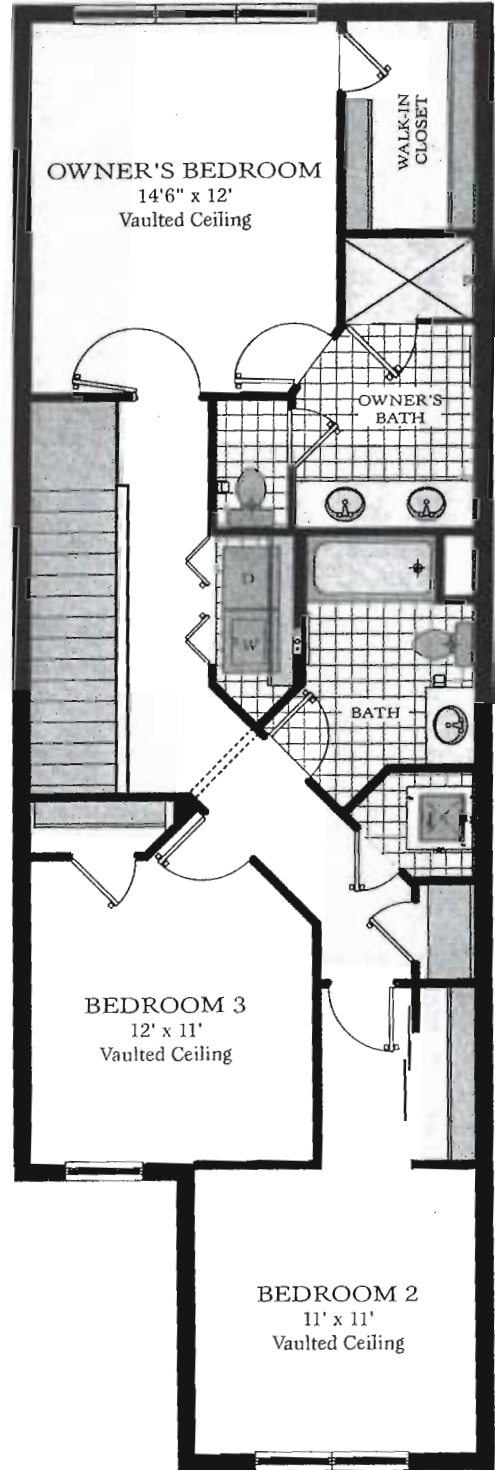
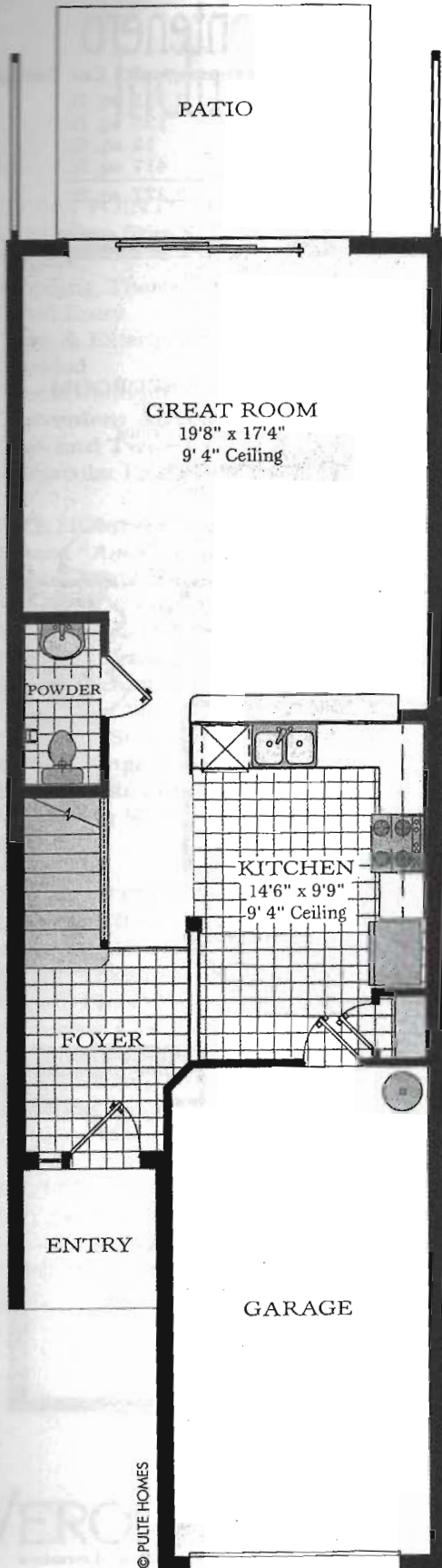
GROSS INTERNAL AREA  
 FLOOR 1: 594 sq. ft, FLOOR 2: 849 sq. ft  
 EXCLUDED AREAS: , GARAGE: 209 sq. ft  
 PORCH: 138 sq. ft  
 TOTAL: 1443 sq. ft

SIZES AND DIMENSIONS ARE APPROXIMATE, ACTUAL MAY VARY.

# The Milan

3 Bedrooms, 2½ Bathrooms and 1 Car Garage

Living Area	1,580 sq. ft.
Patio	133 sq. ft.
Entry	36 sq. ft.
Garage	255 sq. ft.
<b>Total</b>	<b>2,004 sq. ft.</b>



© PULTE HOMES



Artist's renderings are conceptual only. Exact dimensions and spatial arrangements on this plan are approximate and may vary in final construction.

# Pompeii

- 2,104 A/C Sq. Ft.
- 3 Bedrooms
- 2 Full Baths
- 1 Half Bath



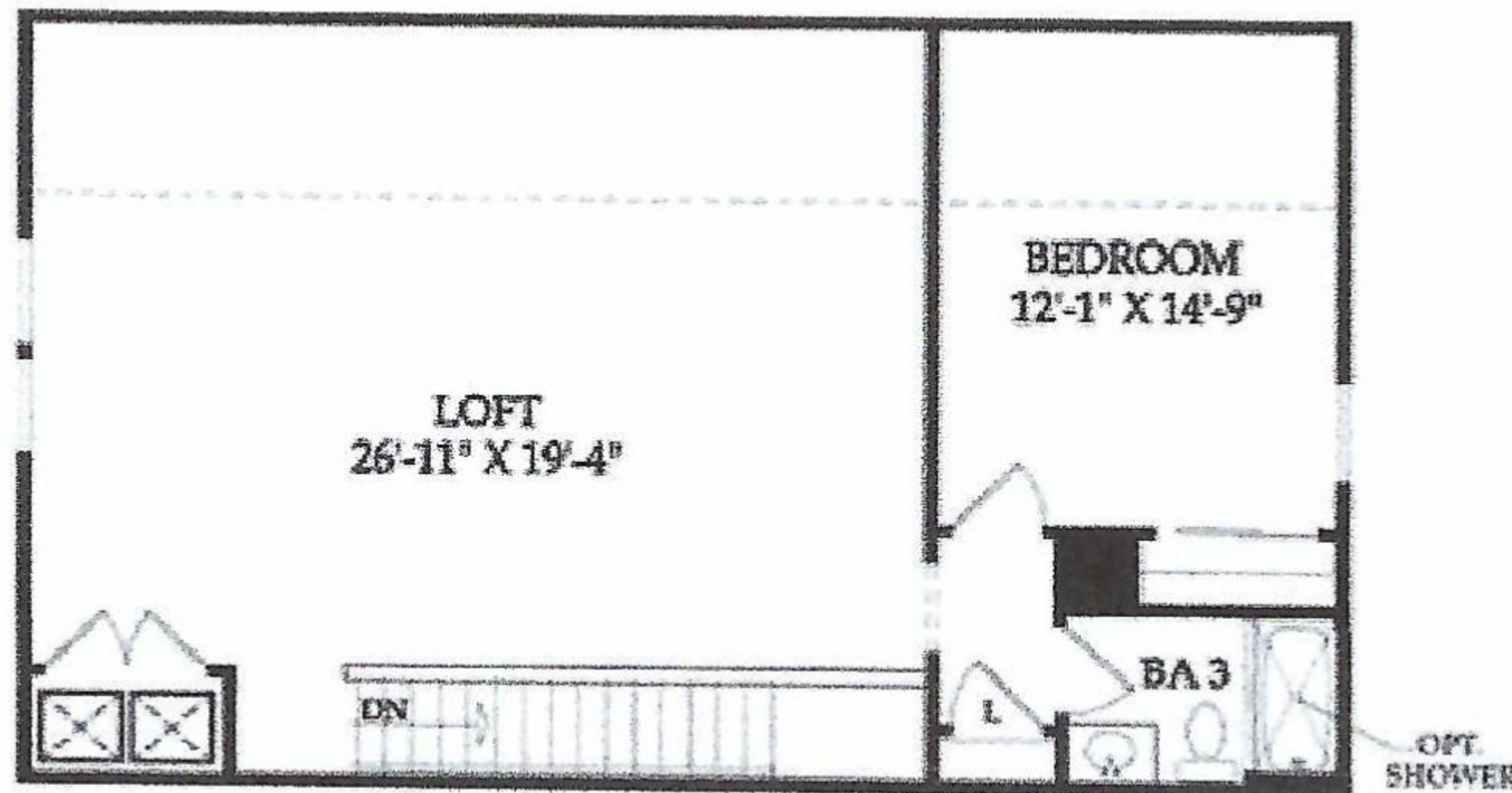
\*Elevation FM2A shown. Room dimensions, square footage and window sizes and locations may vary based on elevation selection.

Visit [pulte.com/veronapointeestates](http://pulte.com/veronapointeestates) to access our interactive floor plan online to further customize the options available for this home design, such as:

- Kitchen with built-in appliances
- Bathroom and shower options
- Den
- Extended covered lanai
- Sliding glass door options







**Loft w/Bedroom and Bath Option**

ADDS 902 SQFT TO TOTAL LIVING

