

Floor Plans

These floor plans have been assembled as a resource for you. They may not be inclusive of every home in the community.

Please note that over time, owners may make modifications to spaces that may not be captured in these original floor plans.

Renderings are not a guarantee of space measurement. Interested parties should verify through their own secured services.

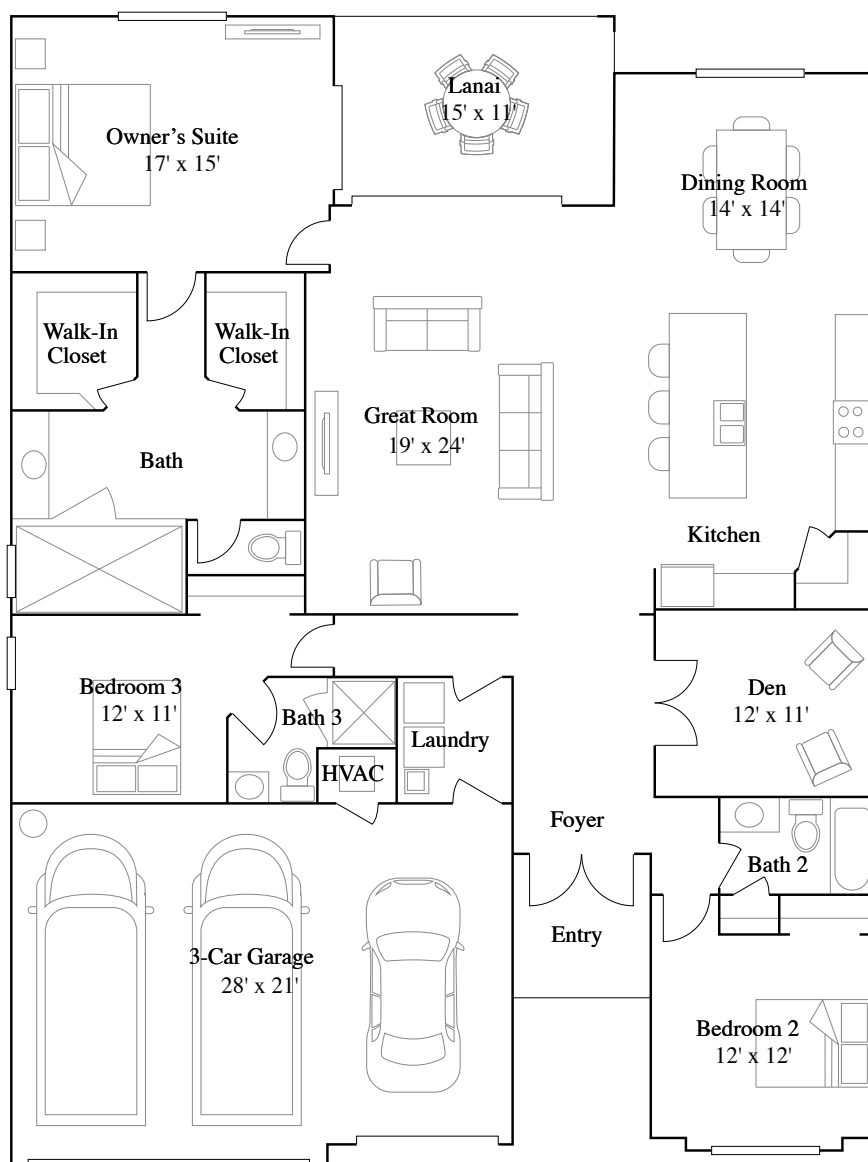
The Summerville II

3 bd · 3 ba · 2,444 ft²

Starting from \$759,999

(Prices as of February 9, 2026. All subject to change.)

1st Floor



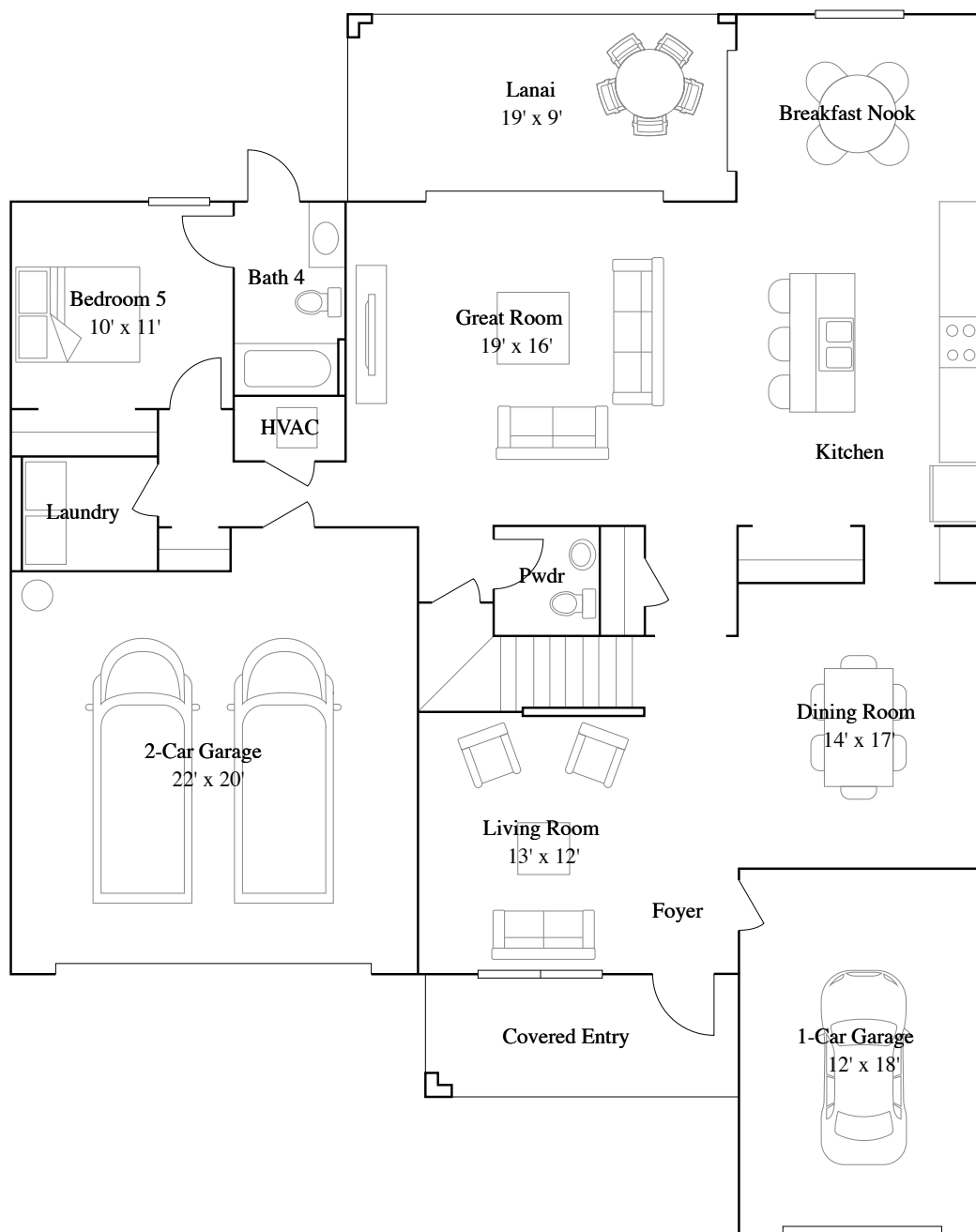
Sorrento

5 bd · 4 ba · 1 half ba · 3,283 ft²

Starting from \$829,999

(Prices as of February 9, 2026. All subject to change.)

1st Floor



Sorrento

5 bd · 4 ba · 1 half ba · 3,283 ft²

Starting from \$829,999

(Prices as of February 9, 2026. All subject to change.)

2nd Floor

