

## Floor Plans

These floor plans have been assembled as a resource for you. They may not be inclusive of every home in the community.

Please note that over time, owners may make modifications to spaces that may not be captured in these original floor plans.

Renderings are not a guarantee of space measurement. Interested parties should verify through their own secured services.

# Floor Plans

## 2 BEDROOM / 2 BATH

1191 sq. ft. Living Space

103 sq. ft. Lanai

1294 sq. ft. Total Space

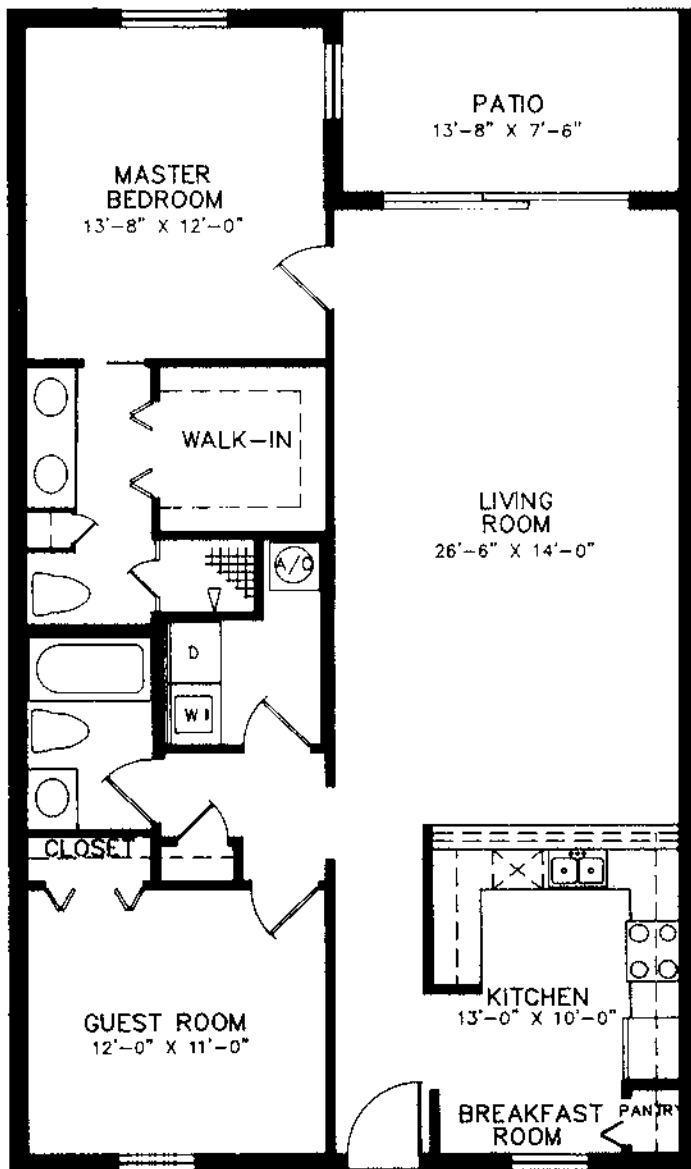
ALL MEASUREMENTS ARE APPROXIMATE AND SUBJECT TO CHANGE IN ORDER TO PERMIT USE OF THE LATEST AND FINEST IN MATERIALS AND DESIGN.



## CYPRESS GLEN

*Naples Nature Preserve*

Scale: 1/8" = 1'0"



# Features & Amenities

## Recreational Facilities

- Heated Swimming Pool
- Sun Deck and Cabana
- 14 Acre Cypress Preserve

## Home Features

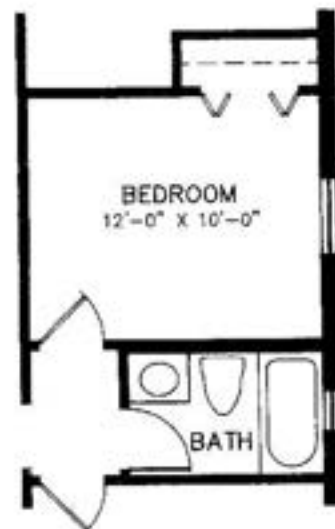
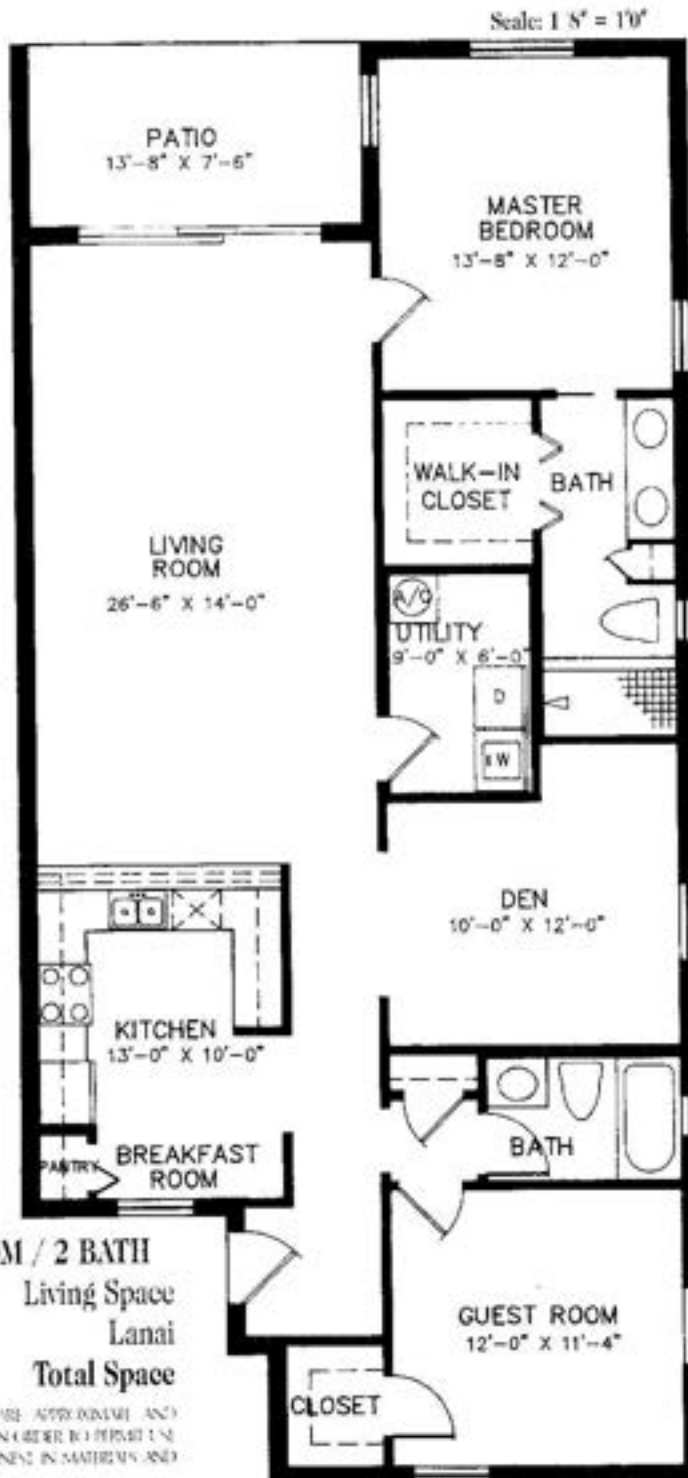
- Carports
- Deluxe Floor Coverings

- White-on-White G.E. Appliances
- 30" Range with Range Hood
- Dishwasher
- Refrigerator with Ice Maker
- Modern Style Cabinets
- Doorbell and Peep Hole
- Marble Window Sills
- Kitchen Pantry

- Kitchen Pass Thru
- Serving Bar
- Stainless Steel Sink
- Linen Closet
- Ceramic Tile in Shower and Bath Tub Areas
- Double Vanity Sinks in M. Bath
- Medicine Cabinet
- Exhaust Fans
- Padded Carpet
- Trowel-Textured Ceilings & Walls
- Smooth Walls in Kitchen & Baths
- Colonial Paneled Doors & Trim
- Screened Lanai
- 3 TV Outlets, 4 Phone Outlets (4 for 3 Bedroom)
- 3 Ceiling Fan Outlets (4 for 3 Bedroom)
- 2 Smoke Detectors
- 9' Ceilings - 1st and 2nd Floor
- Cathedral Ceilings - 3rd Floor
- Individual High Efficiency Central Air & Heat
- 30 Gallon Quick Recovery Water Heater
- Laundry Room with Washer and Dryer Hook-Up

## Options

- Garage
- Microwave Oven
- Washer - Dryer



ALTERNATE PLAN

ORAL REPRESENTATIONS CANNOT BE RELIED UPON AS CORRECTLY STATING REPRESENTATIONS OF THE DEVELOPER. FOR CORRECT REPRESENTATIONS, MAKE REFERENCE TO THE DOCUMENTS REQUIRED BY SECTION 718.503 FLORIDA STATUTES, TO BE FURNISHED BY A DEVELOPER TO A BUYER OR LESSEE.

ALL MEASUREMENTS ARE APPROXIMATE AND SUBJECT TO CHANGE IN ORDER TO PERFORM ONE OF THE LATEST AND BEST IN MATERIALS AND DESIGN.