

Floor Plans

These floor plans have been assembled as a resource for you. They may not be inclusive of every home in the community.

Please note that over time, owners may make modifications to spaces that may not be captured in these original floor plans.

Renderings are not a guarantee of space measurement. Interested parties should verify through their own secured services.

EXISTING RESIDENTIAL

EXISTING RESIDENTIAL



EXISTING RESIDENTIAL

EXISTING CHURCH



EXISTING RESIDENTIAL

ORANGE BLOSSOM DRIVE

COLLER COUNTY LIBRARY

WALKWAY TO LIBRARY

Orleans

1,825 A/C Sq. Ft. | 3 Bedrooms | 2 Full Baths



Elevation FM2A



Elevation FM2B



Elevation C2A



Elevation C2B



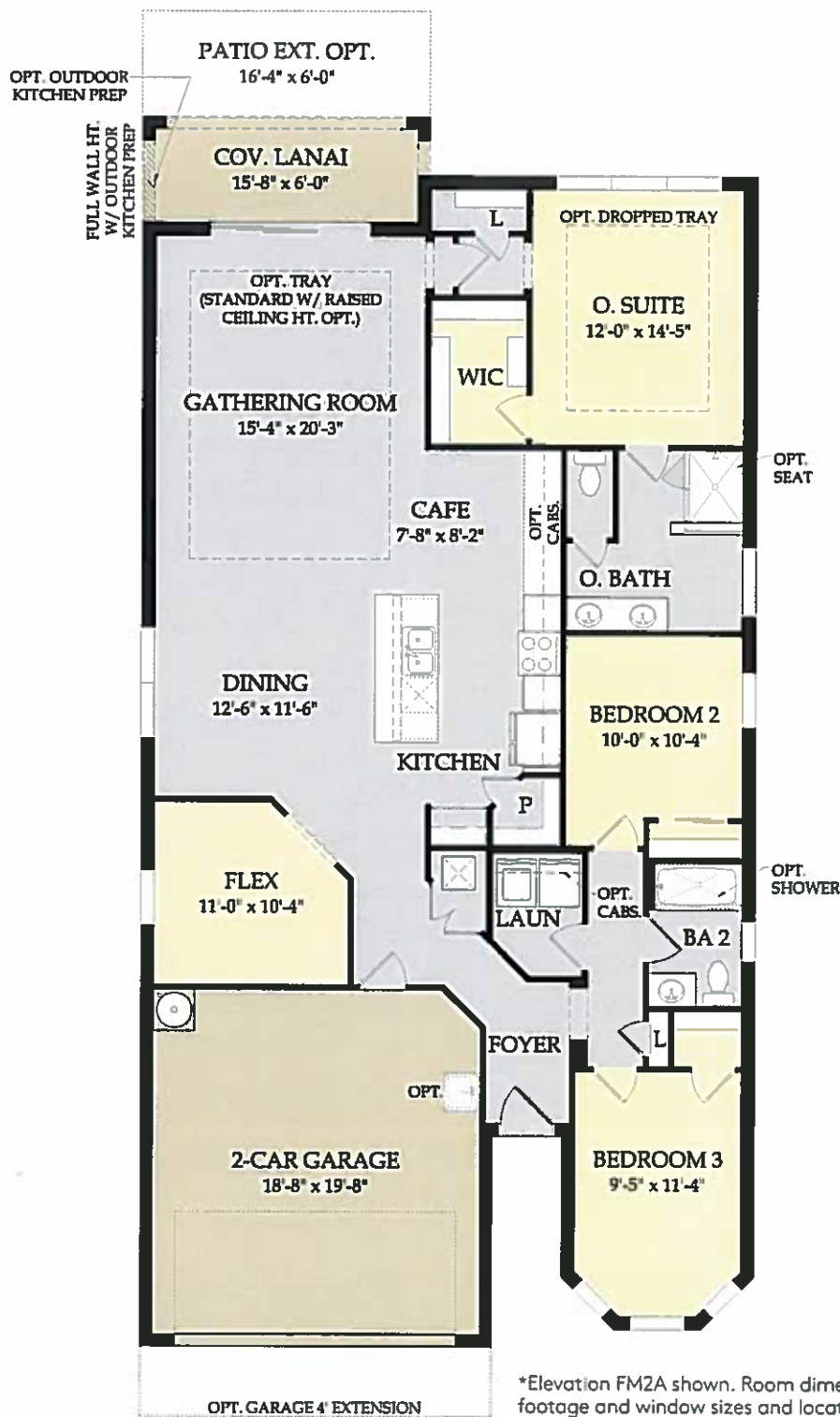
Elevation LC2A



Elevation LC2B

Orleans

- 1,825 A/C Sq. Ft.
- 3 Bedrooms
- 2 Full Baths



*Elevation FM2A shown. Room dimensions, square footage and window sizes and locations may vary based on elevation selection.

Visit pulte.com/averysquare to access our interactive floor plan online to further customize the options available for this home design, such as:

- Kitchen with built-in appliances
- Den
- Bathroom and shower options
- Pocket sliding glass door
- Outdoor kitchen prep
- Extended covered lanai



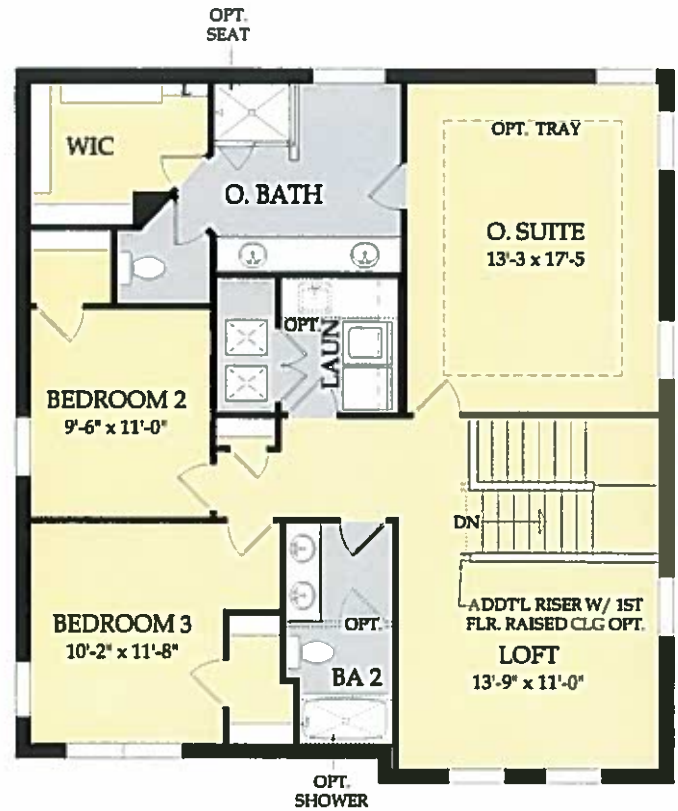
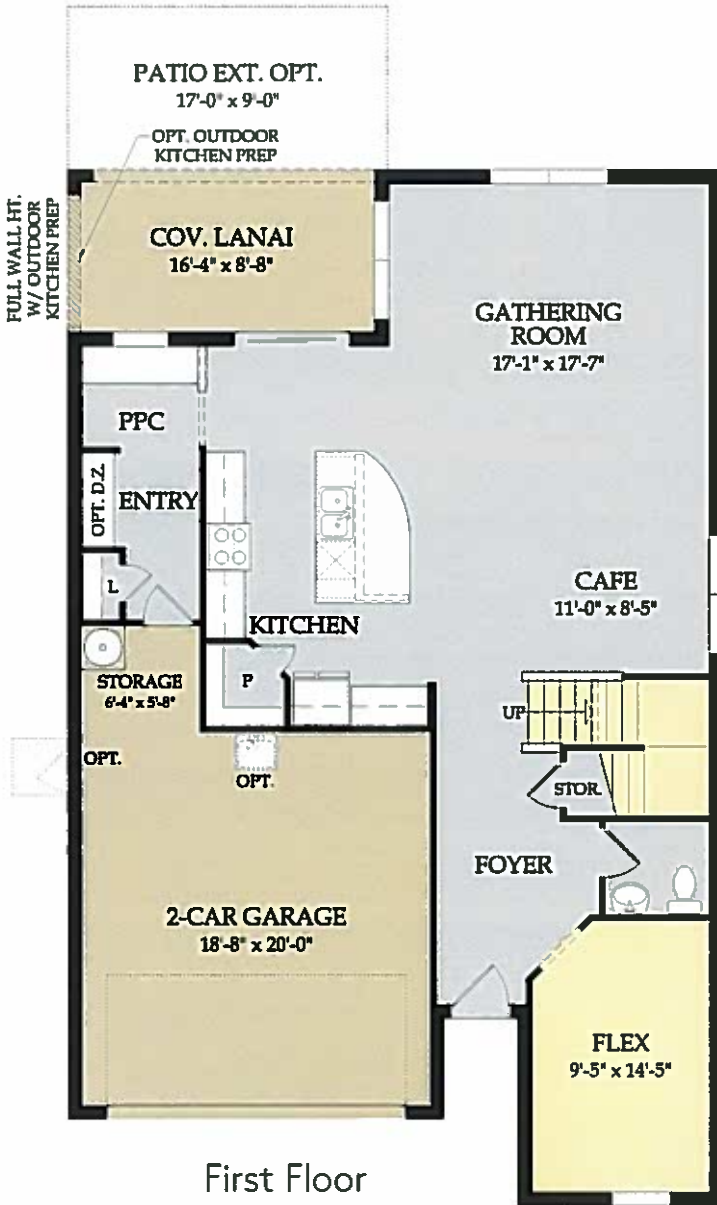
Fifth Avenue

2,523 A/C Sq. Ft. | 3-4 Bedrooms | 2 Full Baths | 1 Half Bath



Fifth Avenue

- 2,523 A/C Sq. Ft.
- 3-4 Bedrooms
- 2 Full Baths
- 1 Half Bath



*Elevation FM2A shown. Room dimensions, square footage and window sizes and locations may vary based on elevation selection.

Visit pulte.com/averysquare to access our interactive floor plan online to further customize the options available for this home design, such as:

- Kitchen with built-in appliances
- Den
- Additional bedroom
- Additional sliding glass door
- Bathroom and shower options
- Extended covered lanai and patio options



Clermont

2,646 – 2,898 A/C Sq. Ft. | 3 – 5 Bedrooms | 2 – 3 Full Baths | 0 – 1 Half Bath



Clermont

- 2,646 – 2,898 A/C Sq. Ft.
- 3–5 Bedrooms
- 2–3 Full Baths
- 0–1 Half Bath



Visit pulte.com/averysquare to access our interactive floor plan online to further customize the options available for this home design, such as:

- Kitchen with built-in appliances
- Bathroom and shower options
- Den
- Outdoor kitchen prep
- Additional bedrooms and bathroom
- Extended covered lanai and patio options



Tafalla

2,677 A/C Sq. Ft. | 4 Bedrooms | 2-3 Full Baths | 1 Half Bath



Elevation FM2A



Elevation FM2B



Elevation C2A



Elevation C2B



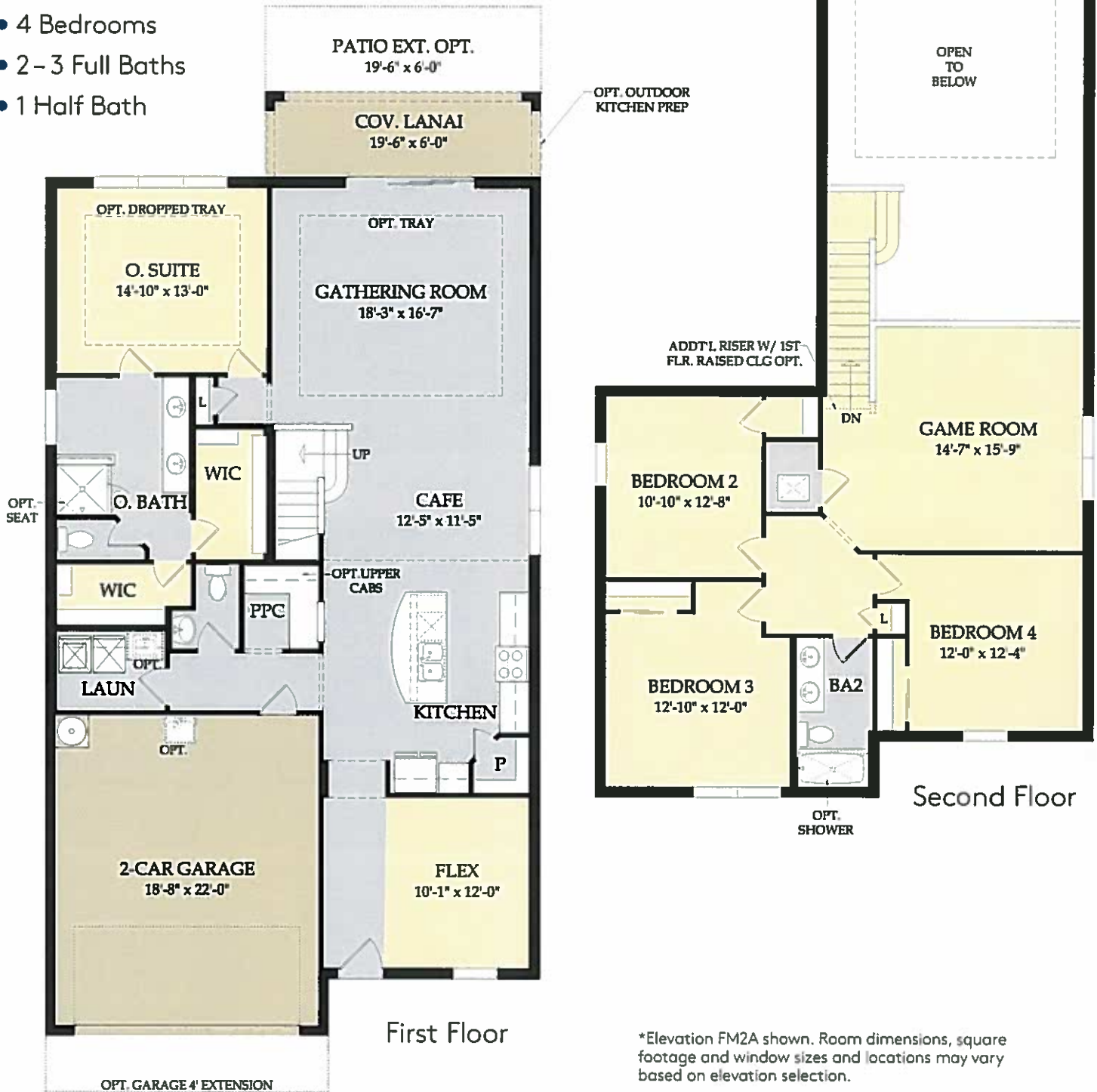
Elevation LC2A



Elevation LC2B

Tafalla

- 2,677 A/C Sq. Ft.
- 4 Bedrooms
- 2-3 Full Baths
- 1 Half Bath



*Elevation FM2A shown. Room dimensions, square footage and window sizes and locations may vary based on elevation selection.

Visit pulte.com/averysquare to access our interactive floor plan online to further customize the options available for this home design, such as:

- Additional bathroom
- Extended covered lanai and patio options
- Pocket sliding glass door
- Bathroom and shower options
- Den



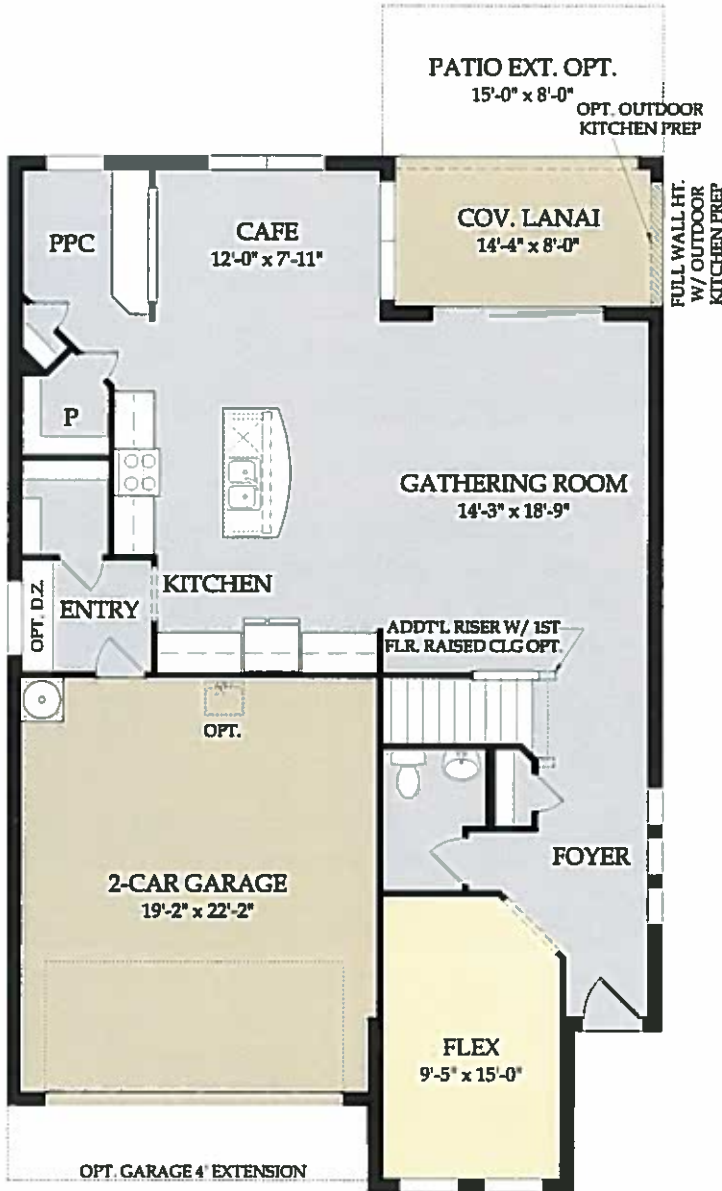
Riverwalk

2,679 A/C Sq. Ft. | 4-6 Bedrooms | 2-4 Full Baths | 0-1 Half Bath

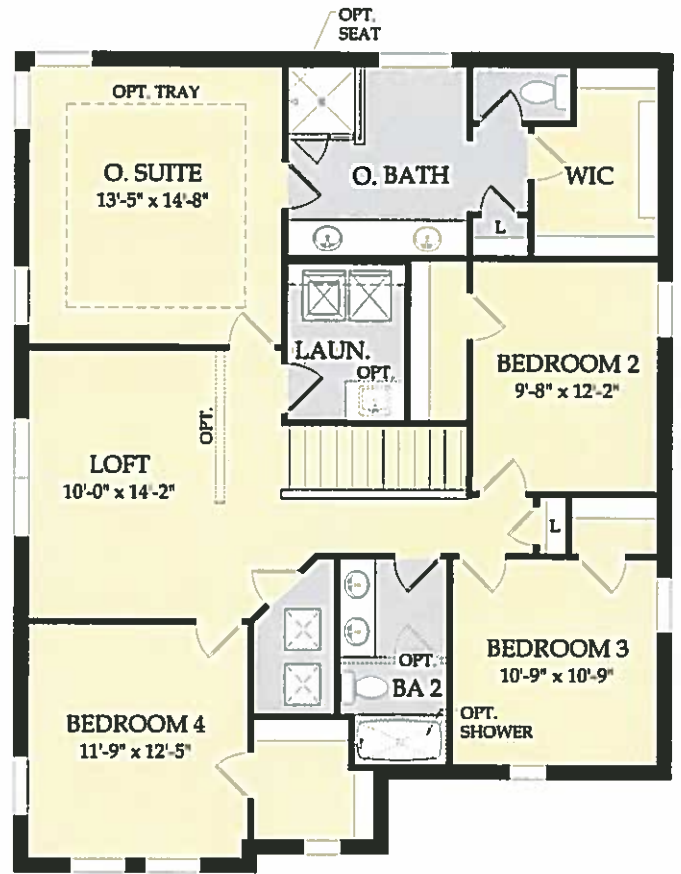


Riverwalk

- 2,679 A/C Sq. Ft.
- 4-6 Bedrooms
- 2-4 Full Baths
- 0-1 Half Bath



First Floor



Second Floor

*Elevation FM2A shown. Room dimensions, square footage and window sizes and locations may vary based on elevation selection.

Visit pulte.com/averysquare to access our interactive floor plan online to further customize the options available for this home design, such as:

- Additional bedrooms and bathrooms
- Den
- Sliding glass door options
- Kitchen with built-in appliances
- Extended covered lanai
- Bathroom and shower options



Park Place

2,802 A/C Sq. Ft. | 4-6 Bedrooms | 2-4 Full Baths | 0-1 Half Bath



Elevation FM2A



Elevation FM2B



Elevation C2A



Elevation C2B



Elevation LC2A

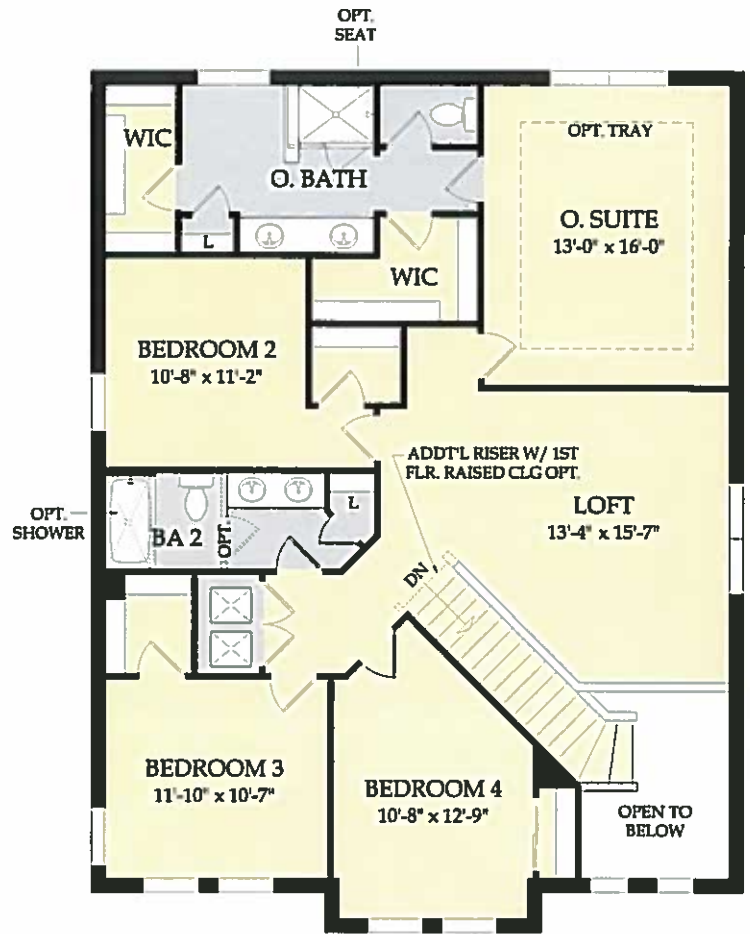


Elevation LC2B



Park Place

- 2,802 A/C Sq. Ft.
- 4-6 Bedrooms
- 2-4 Full Baths
- 0-1 Half Bath



*Elevation FM2A shown. Room dimensions, square footage and window sizes and locations may vary based on elevation selection.

Visit pulte.com/averysquare to access our interactive floor plan online to further customize the options available for this home design, such as:

- Sliding glass door options
- Extended covered lanai
- Additional bedrooms and bathrooms
- Bathroom and shower options
- Den
- Kitchen with built-in appliances



Woodward

2,994 – 3,008 A/C Sq. Ft. | 4 – 6 Bedrooms | 2 – 4 Full Baths | 0 – 1 Half Bath



Elevation FM2A



Elevation FM2B



Elevation C2A



Elevation C2B



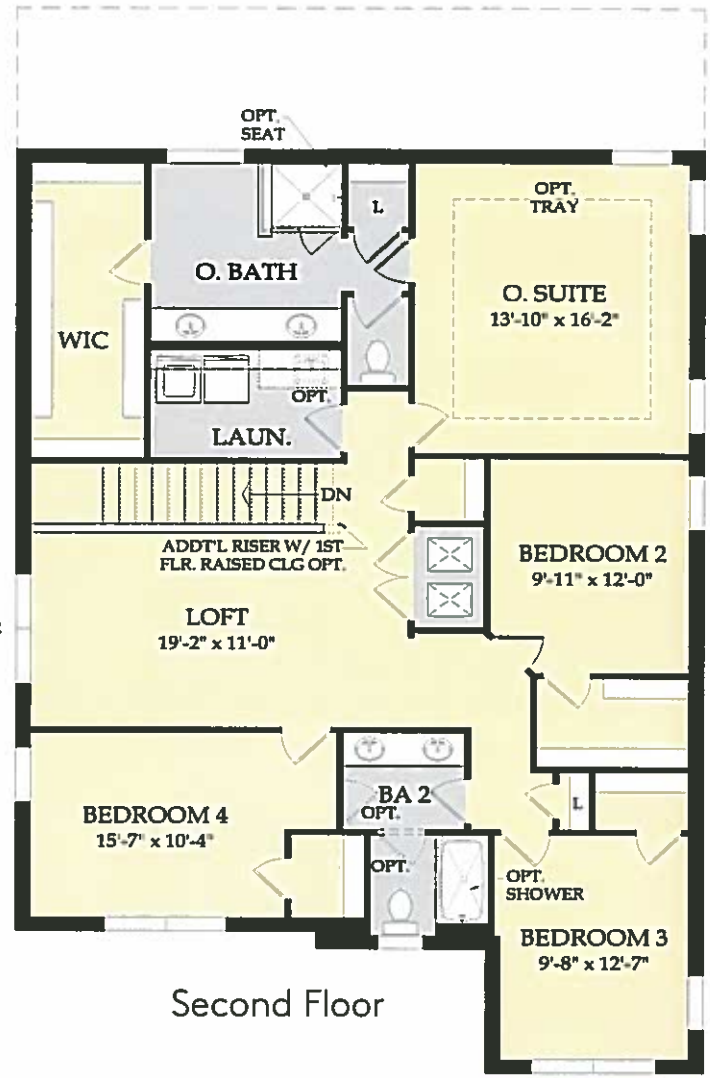
Elevation LC2A



Elevation LC2B

Woodward

- 2,994 – 3,008 A/C Sq. Ft.
- 4 – 6 Bedrooms
- 2 – 4 Full Baths
- 0 – 1 Half Bath



*Elevation FM2A shown. Room dimensions, square footage and window sizes and locations may vary based on elevation selection.

Visit pulte.com/averysquare to access our interactive floor plan online to further customize the options available for this home design, such as:

- Den
- Bathroom and shower options
- Additional bedrooms and bathrooms
- Extended covered lanai and patio options
- Pocket sliding glass door
- Kitchen with built-in appliances



INCLUDED FEATURES

Avery Square

CUSTOM INTERIOR FEATURES:

- Tile floors in foyer, gathering room, kitchen, cafe, baths, and laundry
- Upgraded raised-panel interior doors
- Walk-in owner's closet
- Decorative chrome door hardware
- Pulte Planning Center® with base cabinets (per plan)

EXTERIOR FEATURES:

- Tile roof
- Whole house gutters
- Easy to maintain decorative stucco exterior
- Ventilated aluminum soffits
- High-grade Sherwin-Williams latex paint
- Decorative brick paver driveway
- Large, private lanai
- Galvanized steel hurricane shutters
- Professionally landscaped home site with full sod coverage and automatic sprinkler system

KITCHEN FEATURES:

- Wood kitchen cabinets with 36" upper wall cabinets and hardware
- Granite countertops
- Whirlpool® refrigerator
- Whirlpool® microwave
- Whirlpool® multiple-cycle dishwasher
- Whirlpool® gas range with self-cleaning oven
- Stainless Steel kitchen sink with electric garbage disposal
- Moen® faucet with pullout sprayer

BATHROOM FEATURES:

- Owner's Bath features tiled shower with glass enclosure and granite countertops
- Corian® countertops in secondary bathrooms
- Decorative Moen® faucet
- Wood bath cabinets

QUALITY CONSTRUCTION FEATURES:

- Steel-reinforced concrete block construction
- Professionally engineered roof trusses with hurricane tie-downs for wind protection

ENERGY SAVINGS AND ELECTRICAL FEATURES:

- Ceiling fan prewires, per plan
- Decora rocker switches
- Cable TV and telephone outlets, per plan
- Smoke detectors/carbon monoxide detectors
- R-30 ceiling insulation
- Automatic garage door opener with remote controls
- Insulated fiberglass entry door
- Compact fluorescent exterior lighting
- Exterior waterproof electrical outlets
- Lennox® central air conditioning and heating system with programmable thermostat
- Double-pane, insulated, low E (high efficiency) screened windows
- Energy-efficient water heater
- Whirlpool® washer & dryer

EVERY SERVICE UNDER ONE ROOF:

At Pulte Homes, we make getting into your new home simple and worry-free. Everything you need to purchase your new home under one roof.

• MORTGAGE

With access to a broad menu of loan programs, the professionals at our partner Pulte Mortgage will find the right plan for you.

• TITLE

Our partners at PGP Title work closely with Pulte Mortgage to ensure your closing is a seamless transaction.

• WARRANTY

Our experienced warranty team is ready to help you with any service needs once you move in.