

THE SIGNATURE COLLECTION

KINGSTON/31

2 Bedrooms, Den/Optional 3rd Bedroom,
2 Baths, Great Room, 2-Car Garage,
Screened & Covered Patio

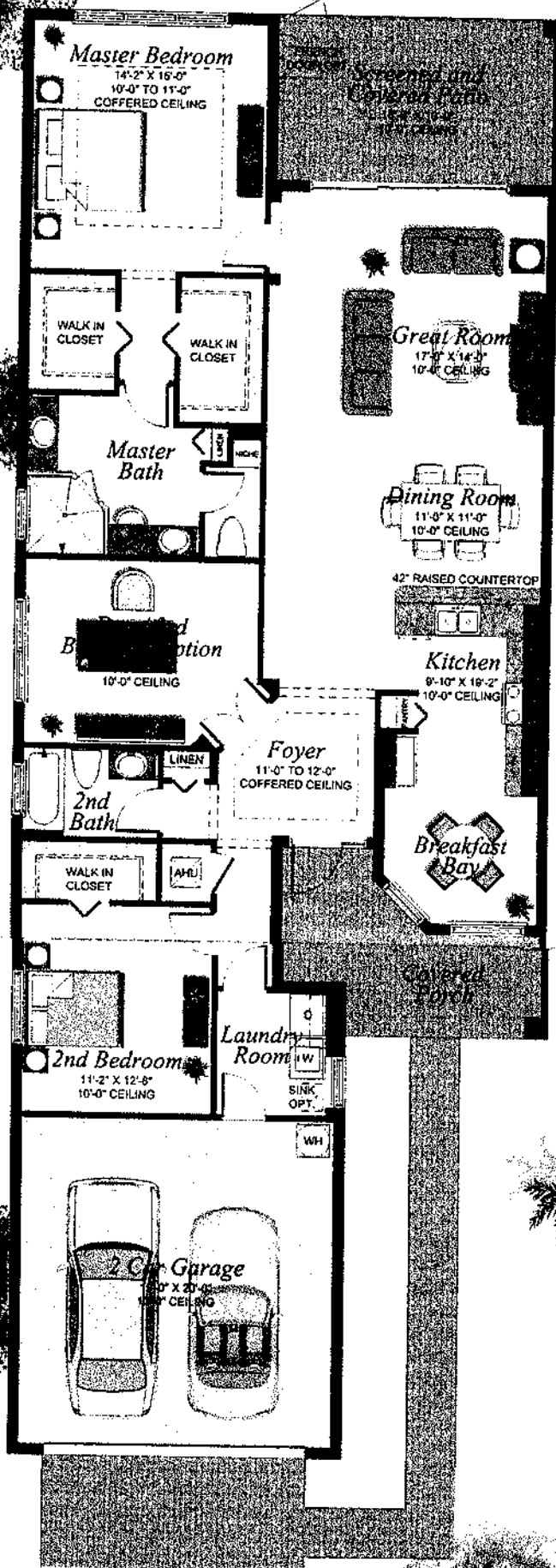
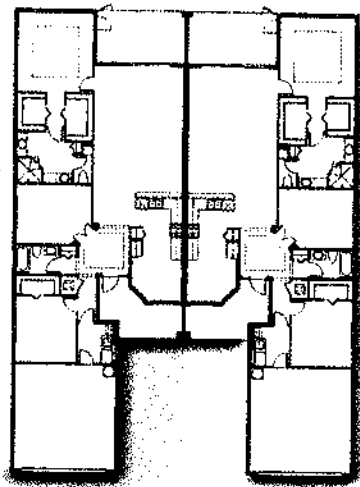
1,807 a/c sq. ft.
2,545 total sq. ft.



ERISTOL/32

2 Bedrooms, Den/Optional 3rd Bedroom,
2 Baths, Great Room, 2-Car Garage,
Screened & Covered Patio

1,831 a/c sq. ft.,
2,545 total sq. ft.



THE SIGNATURE COLLECTION

OXFORD/33

2 Bedrooms, Den/Optional 3rd Bedroom,
2 Baths, Great Room, 2-Car Garage,
Screened & Covered Patio

1,858 s/c sq. ft.
2,617 total sq. ft.



YORK FLOOR PLAN



2 Bedrooms
2.5 Bathrooms
Den/Optional 3rd Bedroom
Great Room
Screened and Covered Patio
2-Car Garage

Living Under Air: 2,024 sq. ft.
Total Living Area: 2,782 sq. ft.

THE VINTAGE
COLLECTION





5

**CHANDON
GRANDE/512**

**3 Bedrooms, Den/Optional 4th Bedroom,
3½ Baths, Great Room, Bonus Room,
2-Car Garage, Screened & Covered Patio**

**2,863 a/c sq. ft.
3,673 total sq. ft.**

**THE VINTAGE
COLLECTION**



Marbella Isles

VINTAGE COLLECTION

SHIRAZ/510

6 Bedrooms
5 Bathrooms
Living Room
Loft
Screened and Covered Patio
3-Car Garage

4,113 a/c sq. ft. · 5,022 total sq. ft.



TRIBECA FLOOR PLAN



- 3 Bedrooms
- 2 Bathrooms - 1 Half Bath
- Den/Optional 4th Bedroom
- Great Room
- 2-Car Garage

Living Under Air: 2,234 SqFt
Total Living Area: 2,877 SqFt

Floor Plans

These floor plans have been assembled as a resource for you. They may not be inclusive of every home in the community.

Please note that over time, owners may make modifications to spaces that may not be captured in these original floor plans.

Renderings are not a guarantee of space measurement. Interested parties should verify through their own secured services.