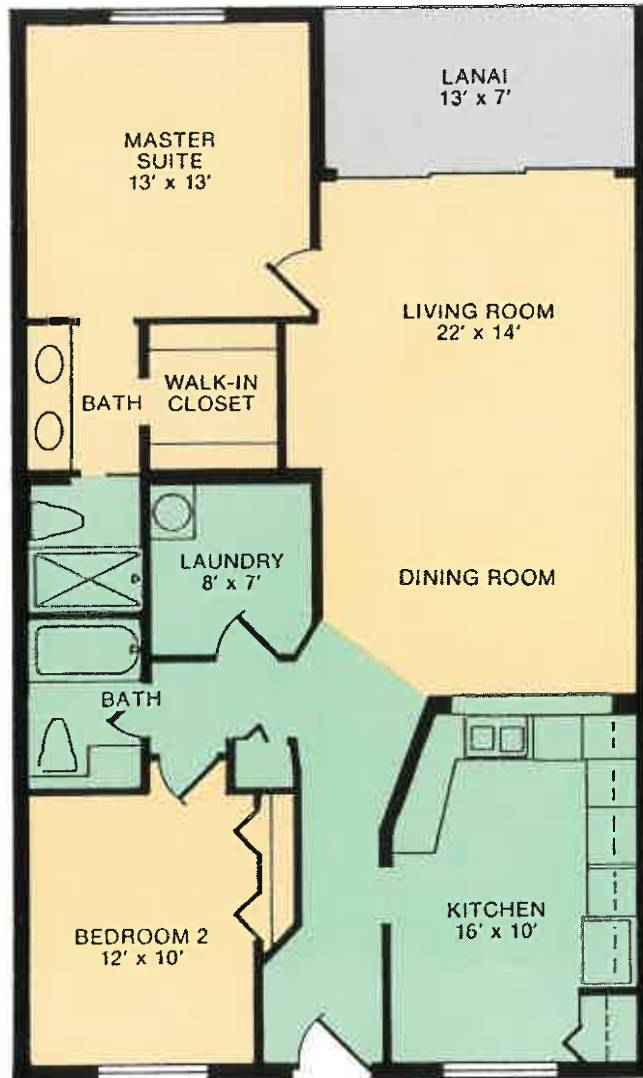


RADIO ROAD (856)

N.K.

# 2 Bedroom Model



Living Area: 1,200 sq. ft.

Total Area: 1,298 sq. ft.

## Sapphire Lakes Standard Features:

- Cathedral Ceiling in Living Room and Dining Room(2nd Floor Only)
- Walk-in Closets
- Large Walk-in Laundry Room with Washer and Dryer Hookups
- No Wax Vinyl
- Choice of High Quality Carpet and Pad
- Eat in Kitchens
- Dishwasher
- Disposal
- Refrigerator with Ice Maker
- 30" Range and Hood, Self-Cleaning Oven
- Double Bowl Stainless Steel Kitchen Sink
- European Cabinets with Mica Top, Adjustable Shelves
- 5 Phone Outlets (3 Bedroom Units)
- 4 Phone Outlets (2 Bedroom Units)
- 4 TV Outlets (3 Bedroom Units)
- 3 TV Outlets (2 Bedroom Units)
- Built-in Storage Pantry
- Smoke Detectors
- Ceiling Fan Outlets Wired and Switched
- 40-Gallon Quick Recovery Water Heaters
- Linen Closet
- Cultured Marble Vanity Tops in Bathrooms
- Mirrors Above Vanities
- Smooth Plaster Drywalls in Kitchens and Bathrooms
- Screened Lanai
- Tempered Sliding Glass Doors
- Marble Window Sills
- Screens on All Windows
- White Aluminum Windows and Entry Doors
- Central Electric Heating & Air Conditioning

# SAPPHIRE LAKES

## CARRIAGE HOME STANDARD FEATURES

### OVERALL:

- 2 STORY, 4 UNIT BUILDING
- PRIVATE SCREENED LANAI
- UPSTAIRS UNITS HAVE VAULTED CEILINGS AND FLOWER LEDGES
- EUROPEAN CABINETS AND VANITIES
- WALK IN CLOSET IN MASTER BEDROOM
- QUALITY CARPET AND PADDING
- 6 PANEL DOORS
- POLISHED MARBLE WINDOW SILLS
- LAUNDRY ROOM WITH WASHER AND DRYER HOOKUPS
- CENTRAL ELECTRIC HEAT AND AIR CONDITIONING
- PRE-WIRED CEILING FAN OUTLETS
- SMOKE DETECTORS
- NO-WAX VINYL FLOOR IN ENTRY FOYER
- FORTY GALLON QUICK RECOVERY WATER HEATER

### EAT IN KITCHEN:

- WHITE ON WHITE APPLIANCES
- REFRIGERATOR WITH ICE MAKER
- 30" SELF-CLEANING RANGE
- AUTOMATIC DISHWASHER
- RANGE HOOD
- DOUBLE STAINLESS STEEL SINK
- GARBAGE DISPOSAL
- NO-WAX VINYL FLOOR
- BUILT IN PANTRY

### BATHROOMS:

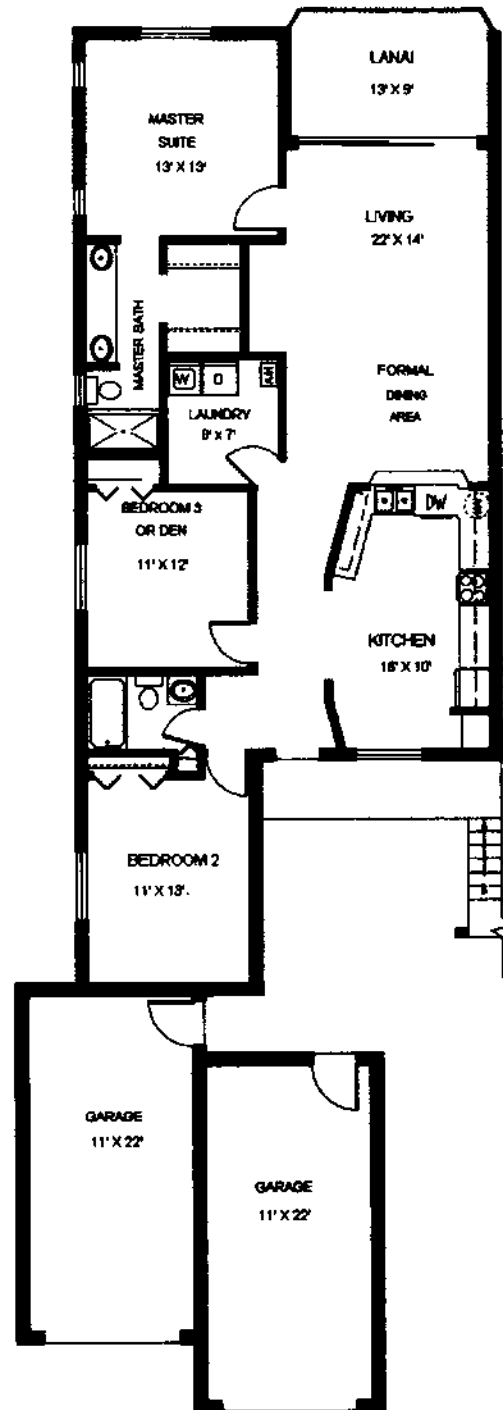
- TUB AND SHOWER ENCLOSURES OF CERAMIC TILE
- NO-WAX VINYL FLOOR
- LINEN CLOSET
- CULTURED MARBLE VANITY TOPS
- DOUBLE SINK IN DRESSING ROOM

### EXTERIOR:

- BEAUTIFUL LANDSCAPING
- QUALITY STUCCO
- CBS CONSTRUCTION
- GLAZED BARREL TILE ROOFS
- ONE CAR DETACHED GARAGE WITH AUTOMATIC OPENER
- STEEL INSULATED ENTRY DOOR WITH SIDE GLASS PANEL
- HIGH QUALITY ALUMINUM WINDOWS
- STAMPED CONCRETE WALKS AND DRIVEWAYS

### NEIGHBORHOOD:

- HEATED SWIMMING POOLS WITH PARTY PAVILIONS
- TENNIS COURTS
- SHUFFLE BOARD
- BOCCI COURT
- HORSE SHOE PIT
- 40 ACRES OF NATURE PRESERVES
- JOGGING, WALKING, AND BICYCLING PATHS
- LAKES FOR FISHING AND CANOEING

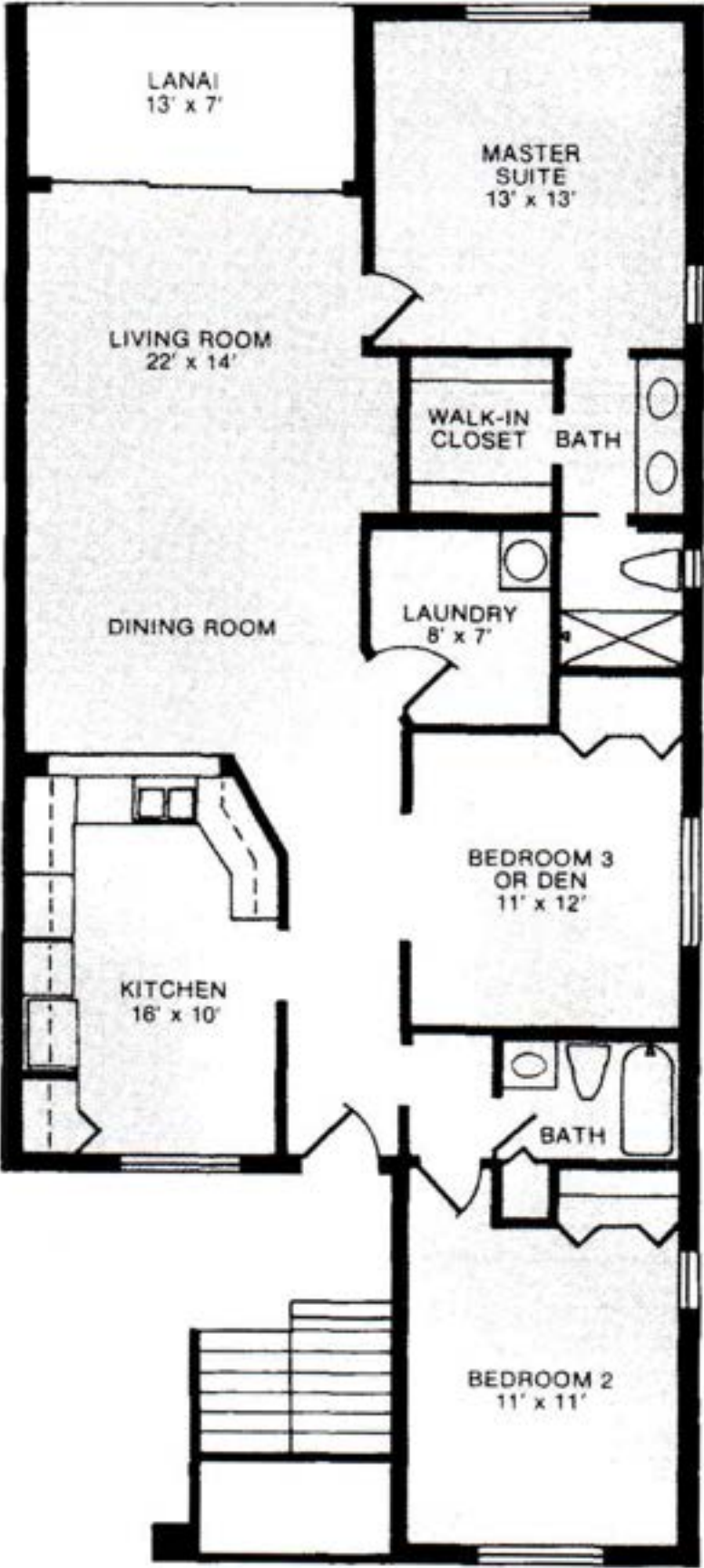


1400 SQUARE FEET UNDER AIR

ALL DIMENSIONS ARE APPROXIMATE

ORAL REPRESENTATIONS CANNOT BE RELIED UPON AS CORRECTLY STATING REPRESENTATIONS OF THE DEVELOPER. FOR CORRECT REPRESENTATIONS, MAKE REFERENCE TO THE DOCUMENTS REQUIRED BY SECTION 718.503, FLORIDA STATUTES, TO BE FURNISHED BY DEVELOPER TO BUYER OR LESSEE.

# 3 Bedroom Model



Living Area: 1,406 sq. ft.  
Total Area: 1,504 sq. ft.

# SAPPHIRE LAKES

## COACH HOME

### STANDARD FEATURES

#### OVERALL:

- 2 STORY, 4 UNIT BUILDING
- PRIVATE SCREENED LANAI
- UPSTAIRS UNITS HAVE VAULTED CEILINGS AND FLOWER LEDGES
- EUROPEAN CABINETS AND VANITIES
- DUAL WALK IN CLOSETS IN MASTER BEDROOM
- QUALITY CARPET AND PADDING
- 6 PANEL DOORS
- POLISHED MARBLE WINDOW SILLS
- LAUNDRY ROOM WITH WASHER AND DRYER HOOKUPS
- CENTRAL ELECTRIC HEAT AND AIR CONDITIONING
- PRE-WIRED CEILING FAN OUTLETS
- SMOKE DETECTORS
- NO-WAX VINYL FLOOR IN ENTRY FOYER
- FORTY GALLON QUICK RECOVERY WATER HEATER

#### EAT IN KITCHEN:

- WHITE ON WHITE APPLIANCES
- REFRIGERATOR WITH ICE MAKER
- 30" SELF-CLEANING RANGE
- AUTOMATIC DISHWASHER
- RANGE HOOD
- DOUBLE STAINLESS STEEL SINK
- GARBAGE DISPOSAL
- NO-WAX VINYL FLOOR
- BUILT IN PANTRY

#### BATHROOMS:

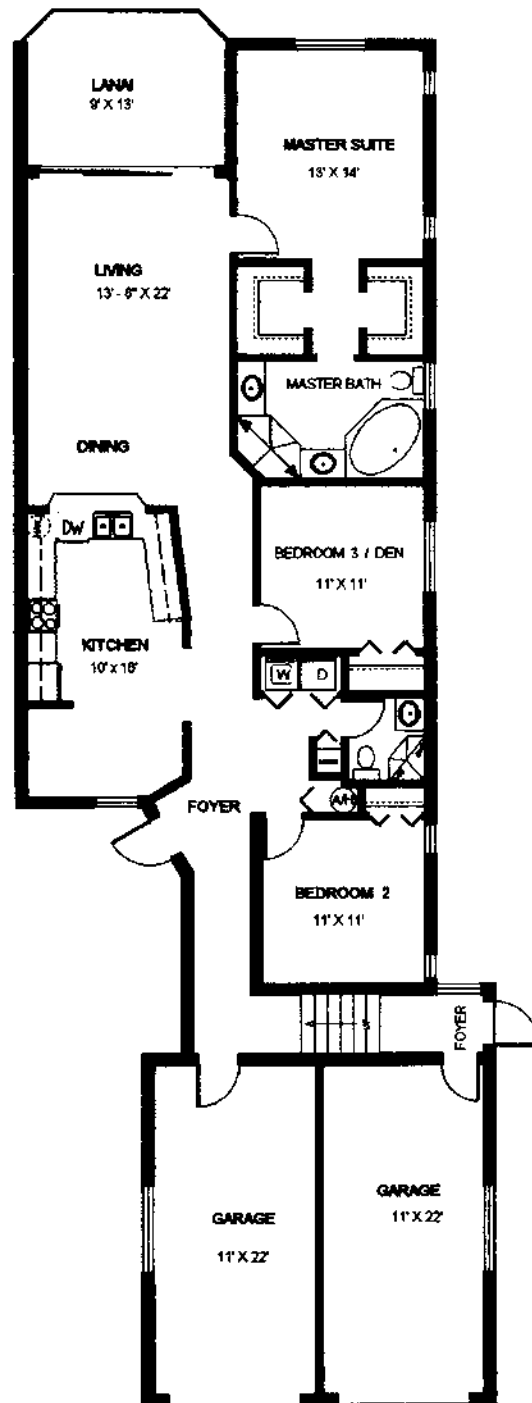
- BEAUTIFUL ROMAN CORNER TUB WITH SPA JETS
- TUB AND SHOWER ENCLOSURES OF CERAMIC TILE
- NO-WAX VINYL FLOOR
- LINEN CLOSET
- CULTURED MARBLE VANITY TOPS
- DOUBLE SINK IN MASTER BATH

#### EXTERIOR:

- BEAUTIFUL LANDSCAPING
- QUALITY STUCCO
- CBS CONSTRUCTION
- GLAZED BARREL TILE ROOFS
- ONE CAR ATTACHED GARAGE WITH AUTOMATIC OPENER
- STEEL INSULATED ENTRY DOOR WITH SIDE GLASS PANEL
- HIGH QUALITY ALUMINUM WINDOWS
- STAMPED CONCRETE WALKS AND DRIVEWAYS

#### NEIGHBORHOOD:

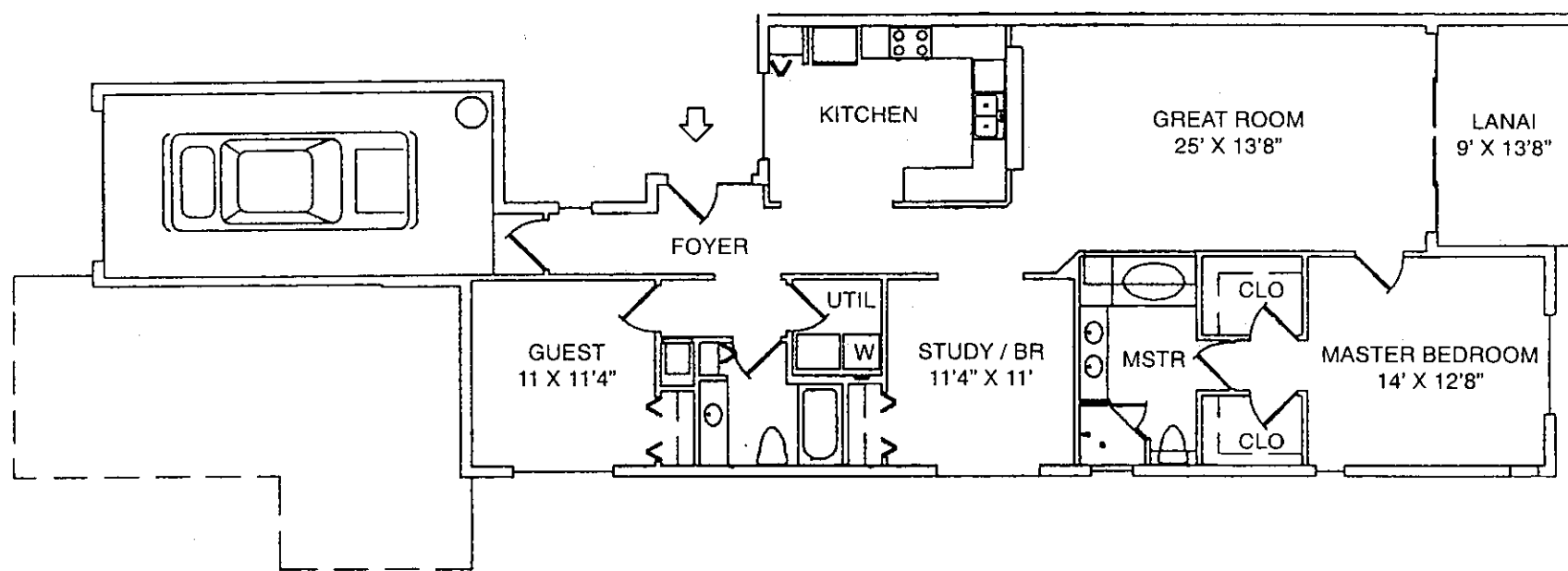
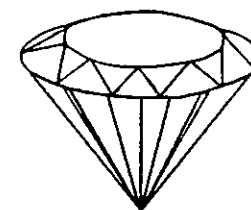
- HEATED SWIMMING POOLS WITH PARTY PAVILIONS
- TENNIS COURTS
- SHUFFLE BOARD
- BOCCI COURT
- HORSE SHOE PIT
- 40 ACRES OF NATURE PRESERVES
- JOGGING, WALKING, AND BICYCLING PATHS
- LAKES FOR FISHING AND CANOEING



1600 SQUARE FEET UNDER AIR

ALL DIMENSIONS ARE APPROXIMATE

ORAL REPRESENTATIONS CANNOT BE RELIED UPON AS CORRECTLY STATING REPRESENTATIONS OF THE DEVELOPER. FOR CORRECT REPRESENTATIONS, MAKE REFERENCE TO THE DOCUMENTS REQUIRED BY SECTION 718.503, FLORIDA STATUTES, TO BE FURNISHED BY DEVELOPER TO BUYER OR LESSEE.



# COACH HOME

## AT SAPPHIRE LAKES

LIVING AREA FIRST FLOOR	1484 SQ. FT.
LANAI	123 SQ. FT.
GARAGE	300 SQ. FT.
<hr/>	
TOTAL AREA	1907 SQ. FT.

## Floor Plans

These floor plans have been assembled as a resource for you. They may not be inclusive of every home in the community.

Please note that over time, owners may make modifications to spaces that may not be captured in these original floor plans.

Renderings are not a guarantee of space measurement. Interested parties should verify through their own secured services.