

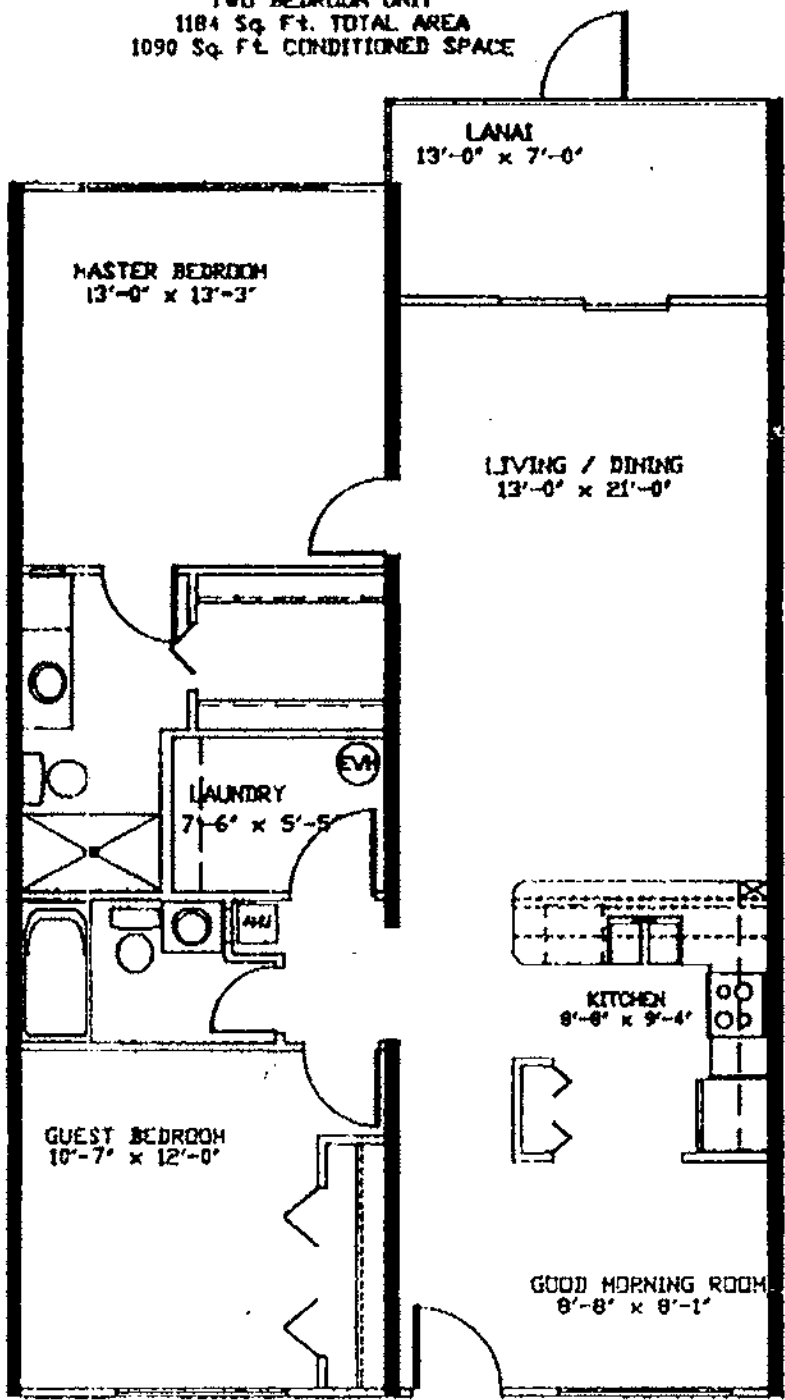
Floor Plans

These floor plans have been assembled as a resource for you. They may not be inclusive of every home in the community.

Please note that over time, owners may make modifications to spaces that may not be captured in these original floor plans.

Renderings are not a guarantee of space measurement. Interested parties should verify through their own secured services.

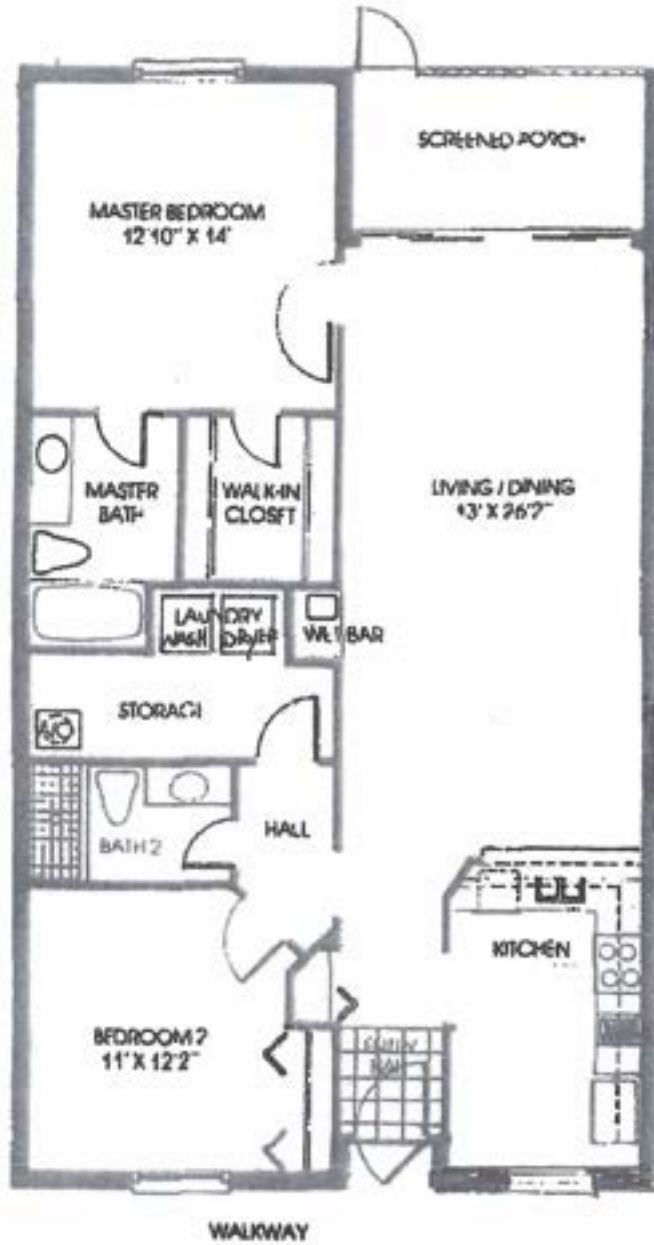
TWO BEDROOM UNIT
1184 Sq. Ft. TOTAL AREA
1090 Sq. Ft. CONDITIONED SPACE

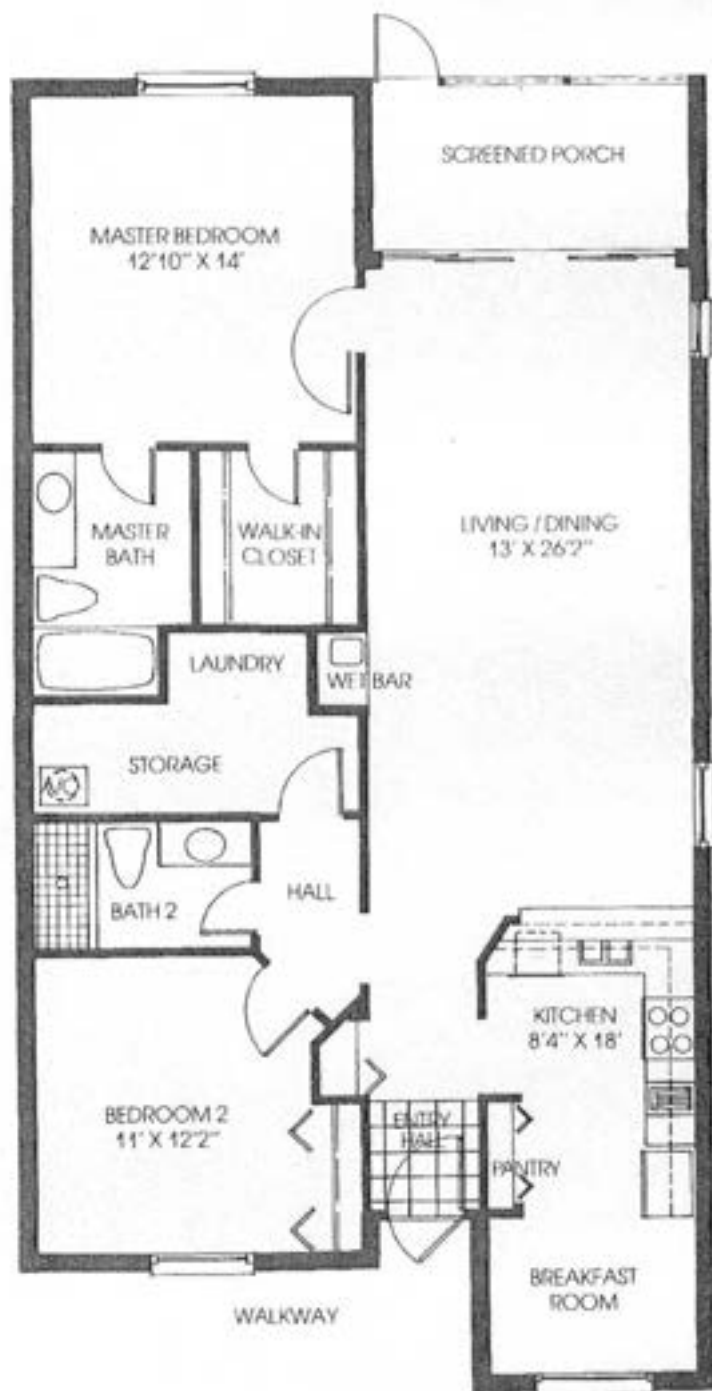


BALCONY

Handwritten signature or initials

2 bedroom/2 bath
1300 sq. ft. total





Banyan

2 bedroom/2 bath
1350 sq. ft. total

Artist's illustrations, dimensions and specifications are approximate and measured including the limited common element screened porch and the outside walls.



Mailing address:

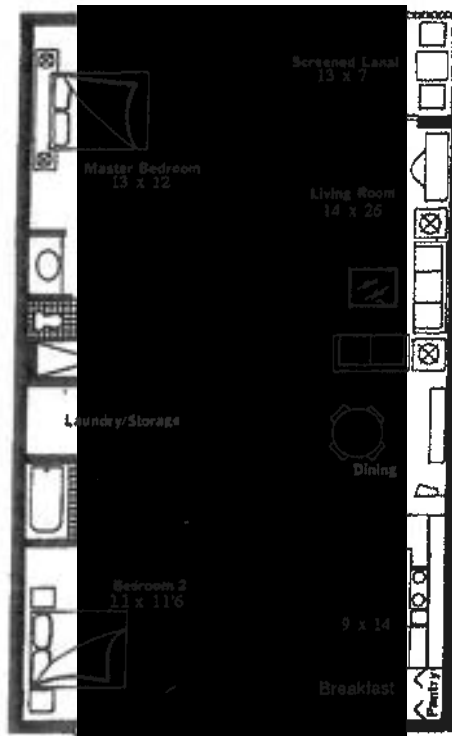
c/o Commonwealth Management and
Development Corp., 603 Fifth Avenue South,
Naples, Florida 33940
Phone: (813) 774-3030.
Outside Florida: 1-800-248-5237
Furnished models open daily.

FLOOR PLANS

FEATURING

- Overall 1300 to 1400 Plus Ft.
- Cathedral Ceiling (2nd Floor)
- Quality All Masonry Construction
- 9 Ft. Breakfast Bar
- Carpeted & Painted
- All Kitchen Appliances
- European Style Cabinets
- Eat in Kitchen
- Lg. Kitchen Pantry
- Screened Lanai
- Tennis Court
- Central Air & Heat
- Oversize Pool & Sundeck
- Poolside Clubhouse
- Covered Parking
- Heated Pool
- Large 5 x 13 Storage Room

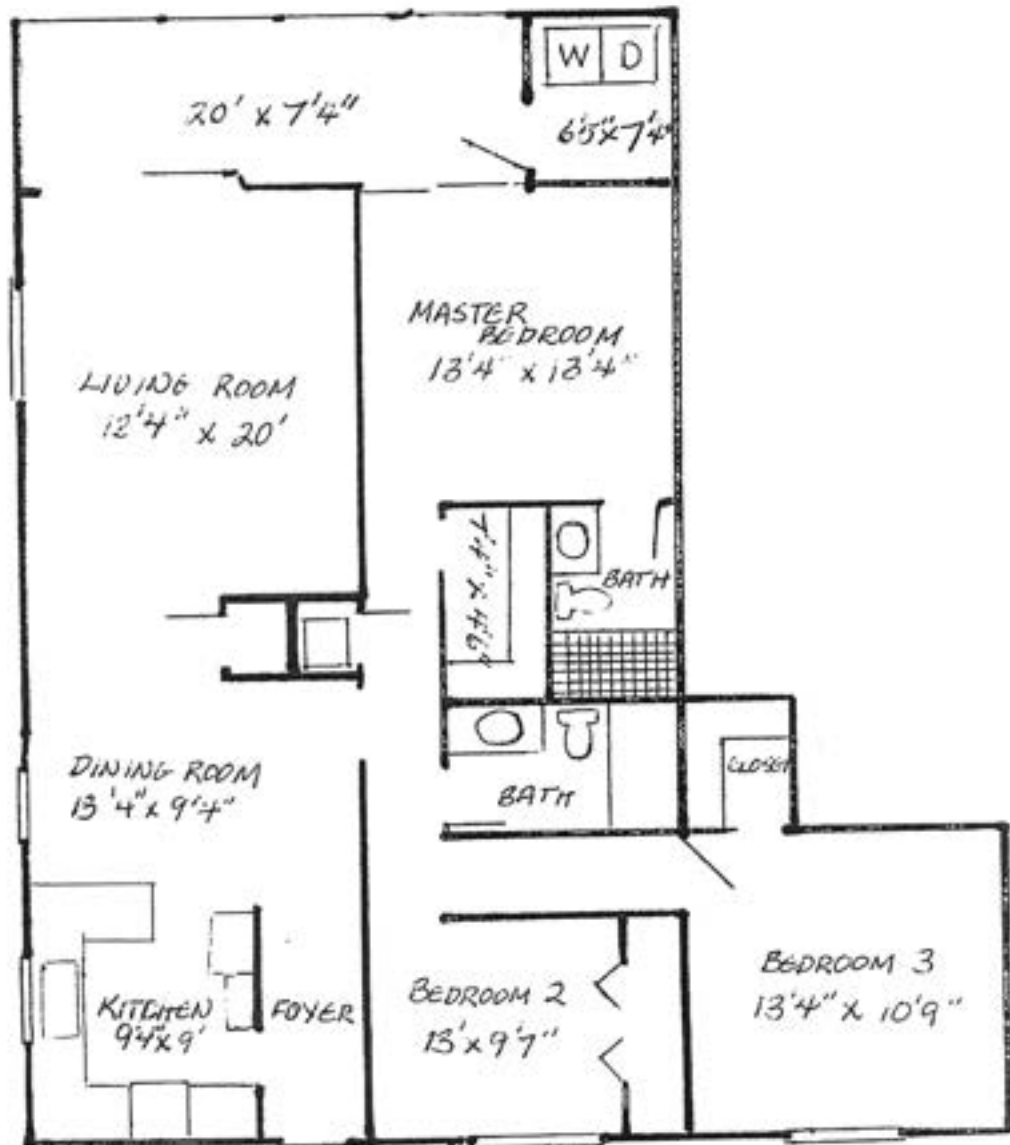
TWO BEDROOM MODEL



St. Regis CLUB
On The Fairway

St. Moritz CLUB
On The Fairway

ALL MEASUREMENTS APPROXIMATE AND SUBJECT TO CHANGE IN ORDER TO PERMIT USE OF THE LATEST AND FINEST IN MATERIALS AND DESIGN



VISTA PALMS

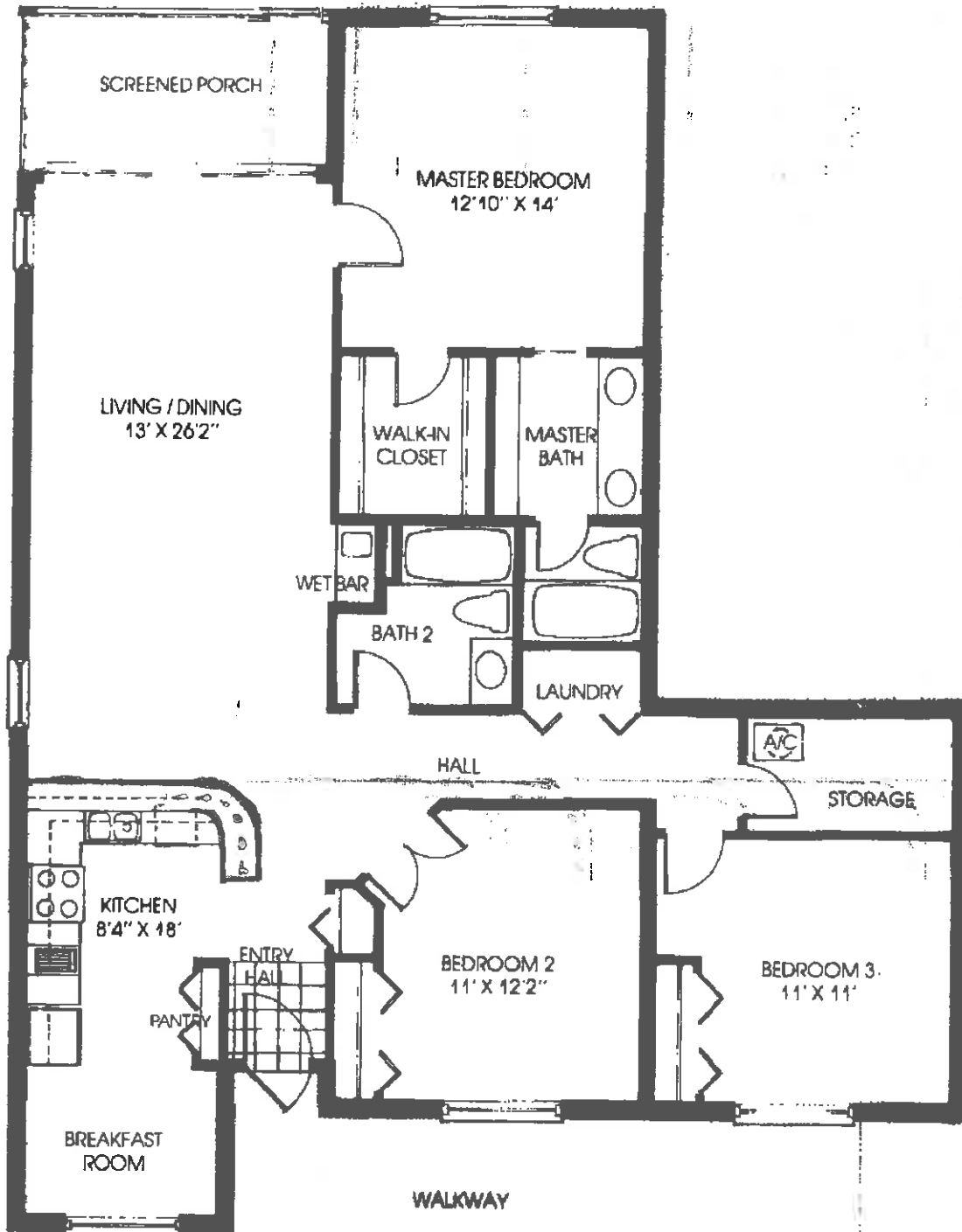
THREE BEDROOMS, 2 BATHS*

Oral representation cannot be relied upon as correctly stating representations of the developer. For correct representation reference should be made to this brochure and to the documents required by Florida statutes Section 711.70(1) to be furnished by a developer to a buyer or lessee.

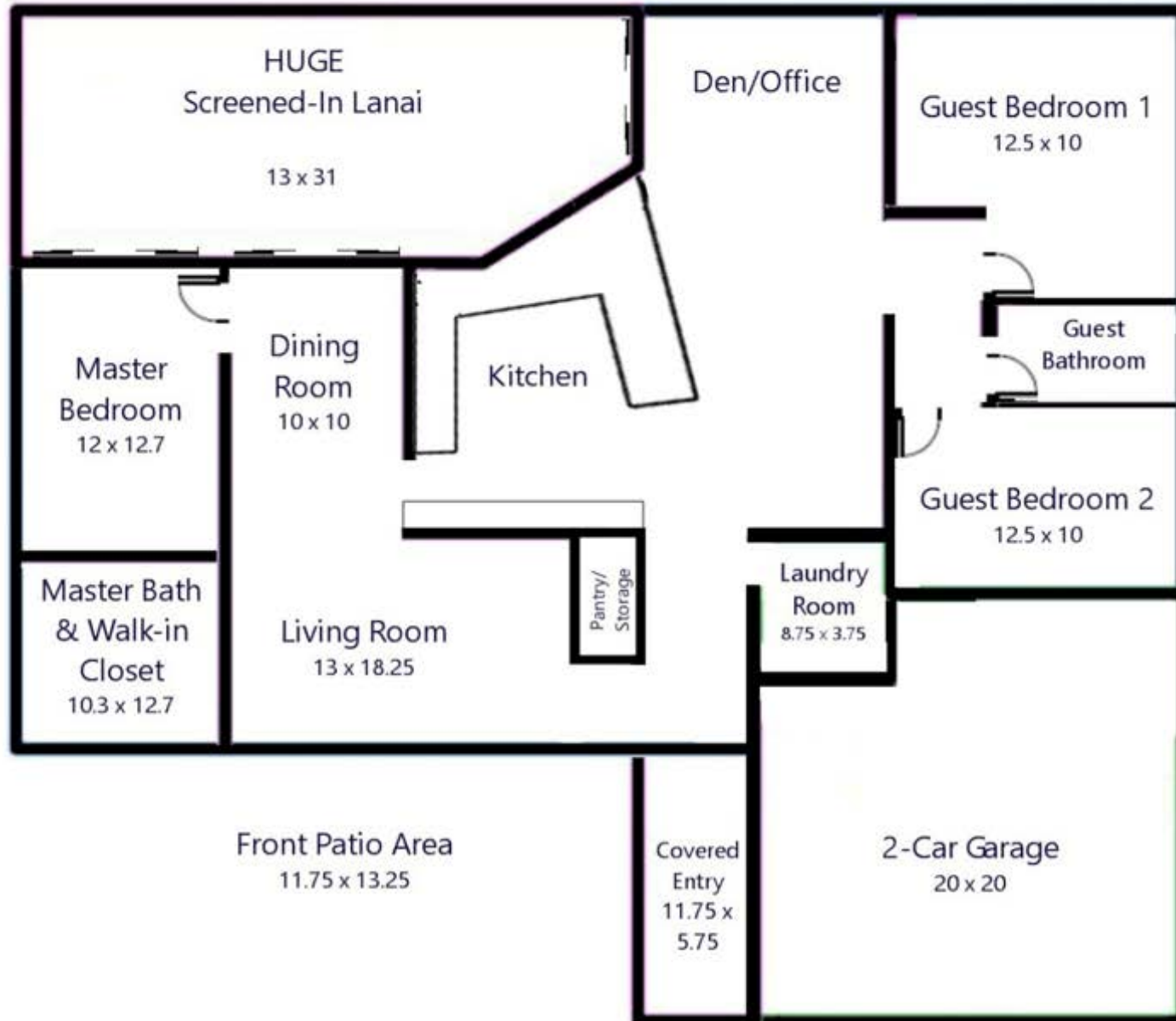


Vista Palms is a project of Vista Properties, one of the larger builders-managers of condominiums in Florida with current projects on both East and West coasts. We are proud of our reputation and suggest you inquire about our company at any financial institution or government office. Be sure you know your builder.

3 bedroom/2 bath 1560 sq. ft. total



Back Patio Area
(44ft wide)





GROSS INTERNAL AREA
FLOOR 1: 1677 sq ft, EXCLUDED AREAS:
GARAGE: 501 sq ft
TOTAL: 1677 sq ft

SIZES AND DIMENSIONS ARE APPROXIMATE, ACTUAL MAY VARY.

TOTALS(in sq ft)

Under Air: 1856

Under Roof: 2056

Lanai: 1080



Every attempt is made to assure accuracy, however measurements are approximate and for illustrative purposes only. Not to scale.

