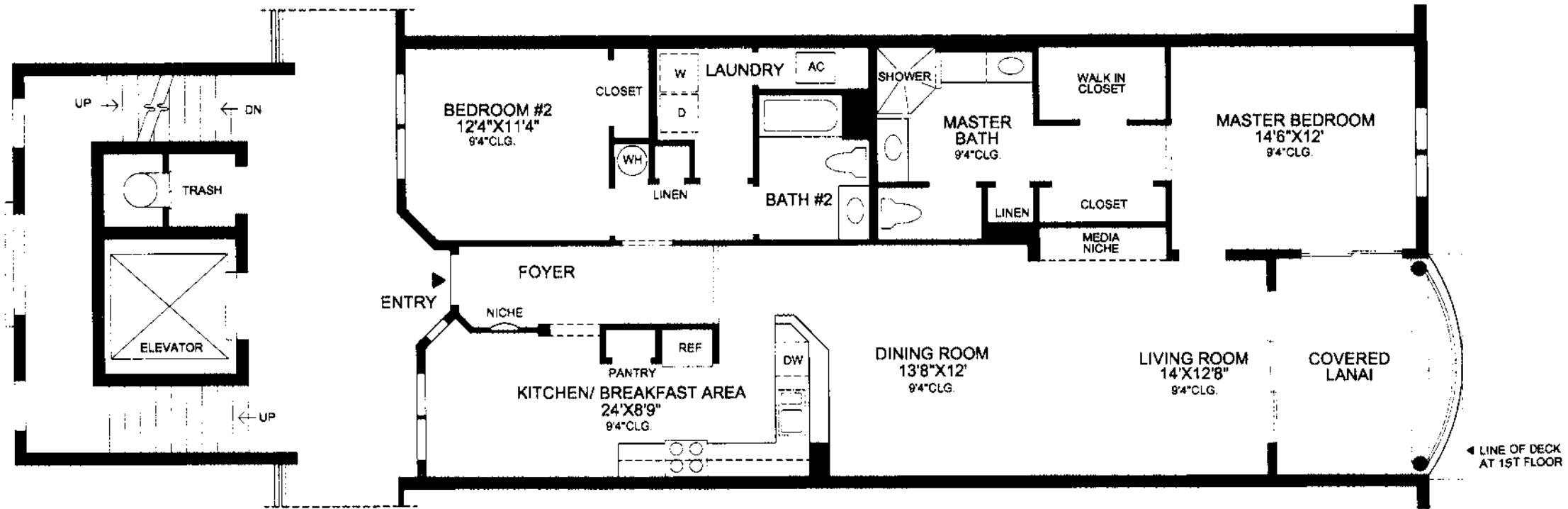


## Floor Plans

These floor plans have been assembled as a resource for you. They may not be inclusive of every home in the community.

Please note that over time, owners may make modifications to spaces that may not be captured in these original floor plans.

Renderings are not a guarantee of space measurement. Interested parties should verify through their own secured services.



# THE BRADFORD

Front entry is easily accessible from the elevator.

Spacious kitchen features a breakfast area and opens to the large dining and living rooms.

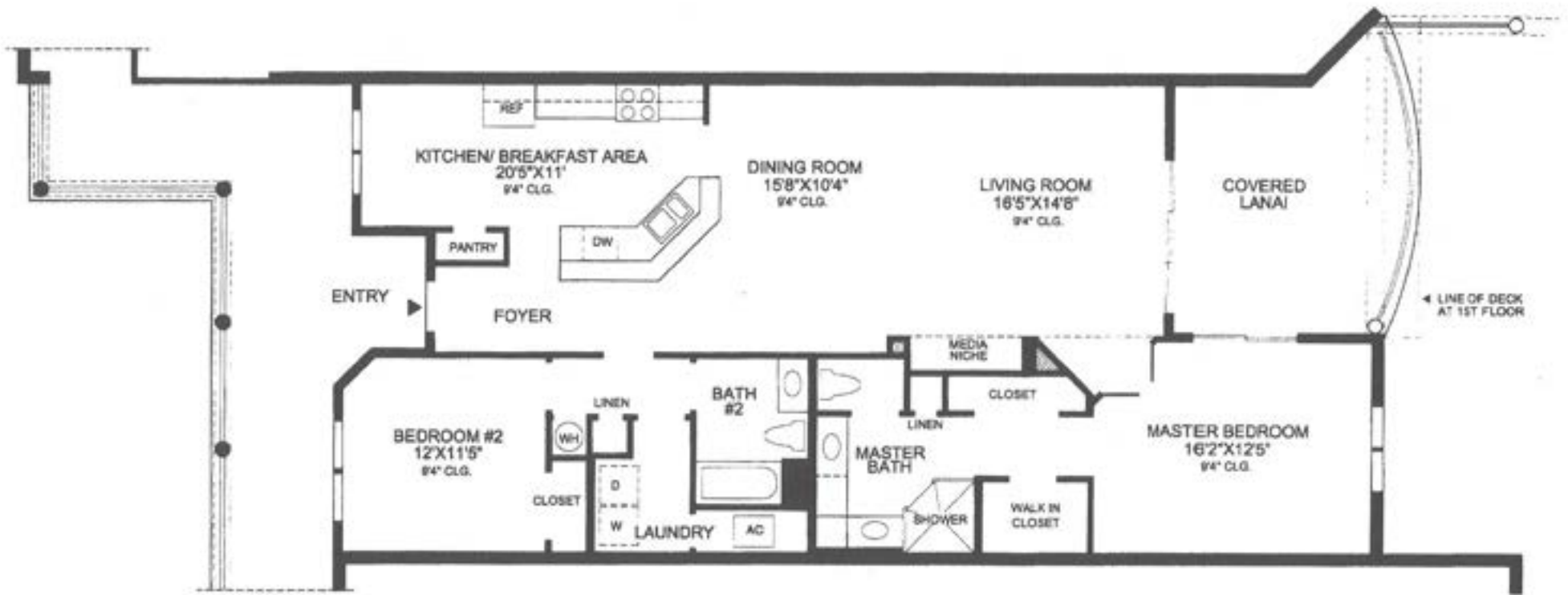
Covered lanai is accessible from both the living room and master bedroom.

Master suite features a sumptuous bath with dual vanities, shower and his and her closets.

2 bedrooms, 2 baths.

Air Conditioned Living Area	1441 sf
Covered Lanai	<u>135 sf</u>
Total	1576 sf

\* Square footage is based on dimensions taken from exterior walls to the middle of the party/common wall.



# THE DONOVAN

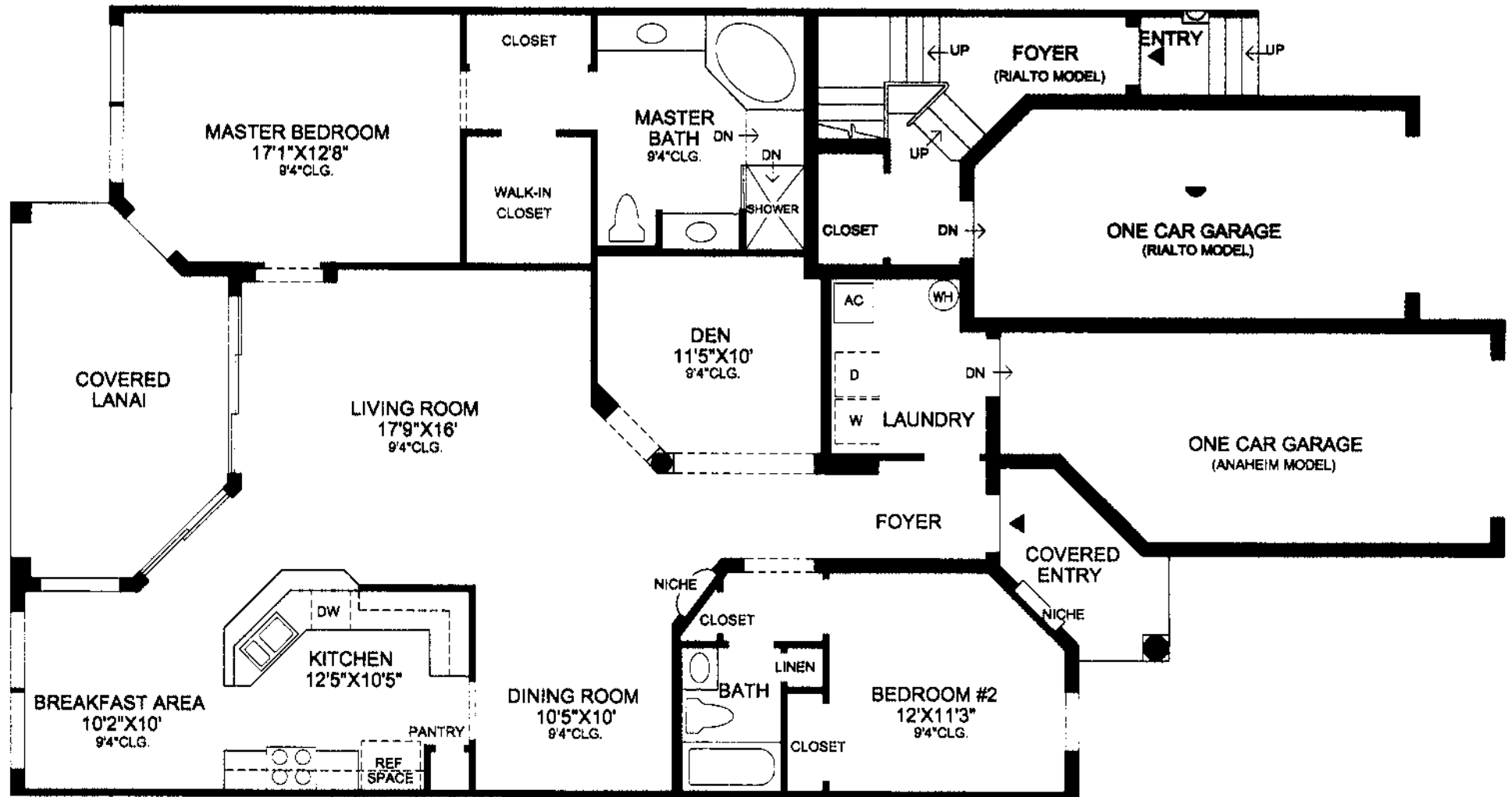
Outdoor views flow from the covered lanai through the large living and dining rooms, extending into the well appointed kitchen with breakfast area and convenient pantry.

Master bedroom features a dramatic double door entry and private access to the lanai. Large walk in closet and second closet on opposite wall lead to luxurious master bath, complete with dual vanities and shower.

2 bedrooms, 2 baths.

Air Conditioned Living Area	1487 sf
Covered Lanai	251 sf
<b>Total</b>	<b>1738 sf</b>

\* Square footage is based on dimensions taken from exterior walls to the middle of the party/common wall.



FIRST FLOOR LIVING UNIT

# THE ANAHEIM

Recessed covered entry leads to a foyer gallery into an open design of the den, living and dining rooms.

Well appointed kitchen is adjacent to the formal dining room and breakfast area.

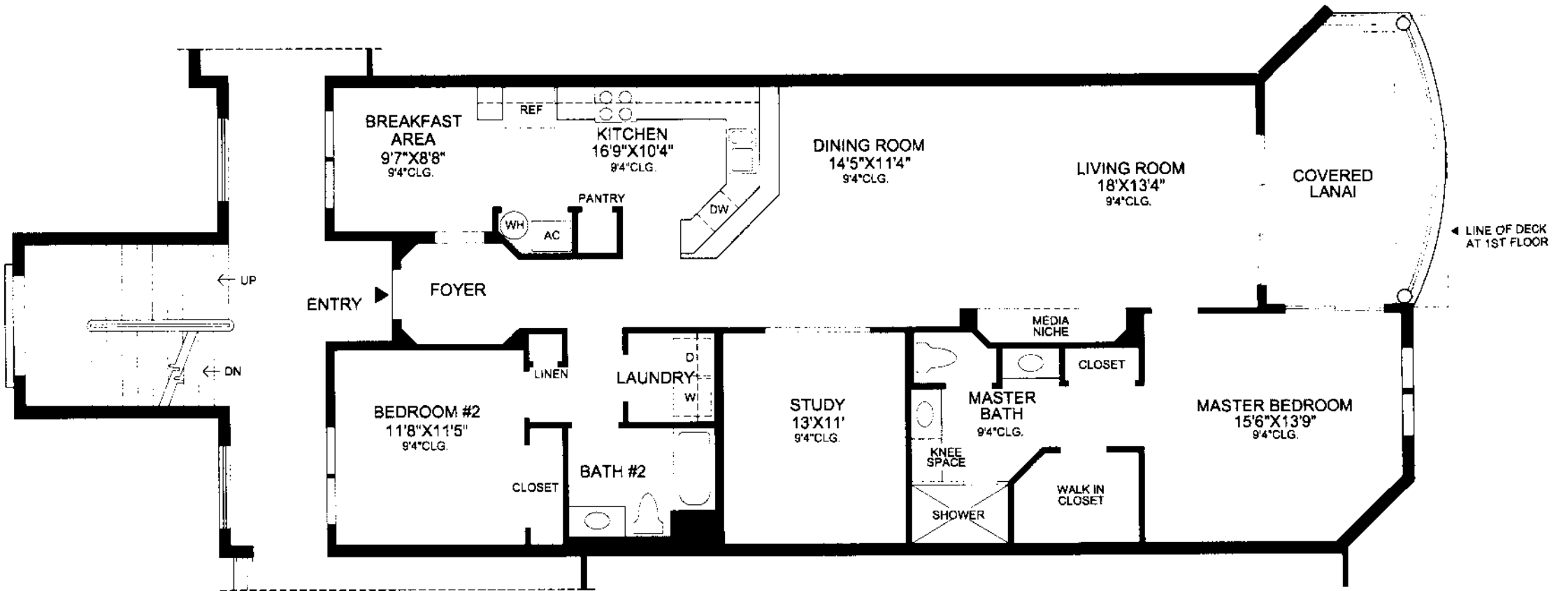
The covered lanai is accessible from the living room, breakfast area and master bedroom.

Master bedroom includes a spacious master bath separated by two large closets.

2 bedrooms, 2 baths.

Air Conditioned Living Area	1672 sf
Covered Lanai	182 sf
Covered Entry	56 sf
Garage	281 sf
<b>Total</b>	<b>2191 sf</b>

\* Square footage is based on dimensions taken from exterior walls to the middle of the party/common wall.



# THE SPRINGFIELD

Kitchen features a sit down breakfast area and opens to the dining room.

Dining and living rooms feature an open design with media niche and access to the covered lanai.

Private master bedroom offers access to the lanai. Closets on either side lead to the lavish master bath with shower, dual vanities with separate seating area and private toilet area.

2 bedrooms, 2 baths, plus study.

Air Conditioned Living Area	1674 sf
Covered Lanai	173 sf
<b>Total</b>	<b>1847 sf</b>

\* Square footage is based on dimensions taken from exterior walls to the middle of the party/common wall.

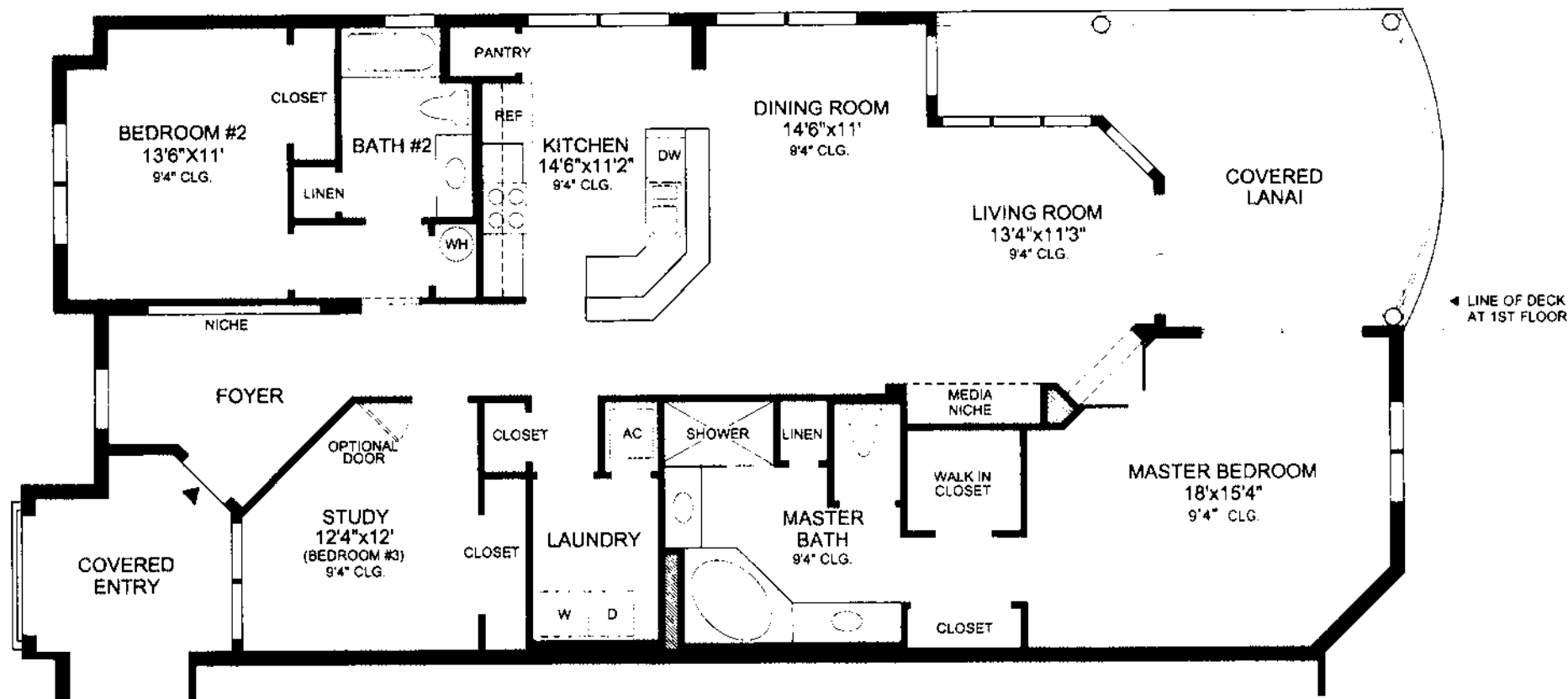
All dimensions are approximate and are subject to field variations. Some windows and floor plans may vary with elevations. Some features may vary from community to community. Please consult Sales Manager for details. Options purchased must be specified in exhibit B.

(FL-NLLB/5869) 1020 ©2000 TOLL BROTHERS, INC.

## Toll Brothers

America's Luxury Home Builder™

www.tollbrothers.com



# THE WADSWORTH

Covered entry leads to large foyer. Adjacent bedroom with full bath is situated opposite a private den with spacious closet for easy conversion into a third bedroom.

Open living area provides views from the well appointed kitchen through the dining and living rooms to the covered lanai.

Master bedroom has a double door entry, private access to the lanai, two large closets, and a master bath with soaking tub, separate shower, dual vanities and private toilet area.

2 bedrooms, 2 baths, plus study.

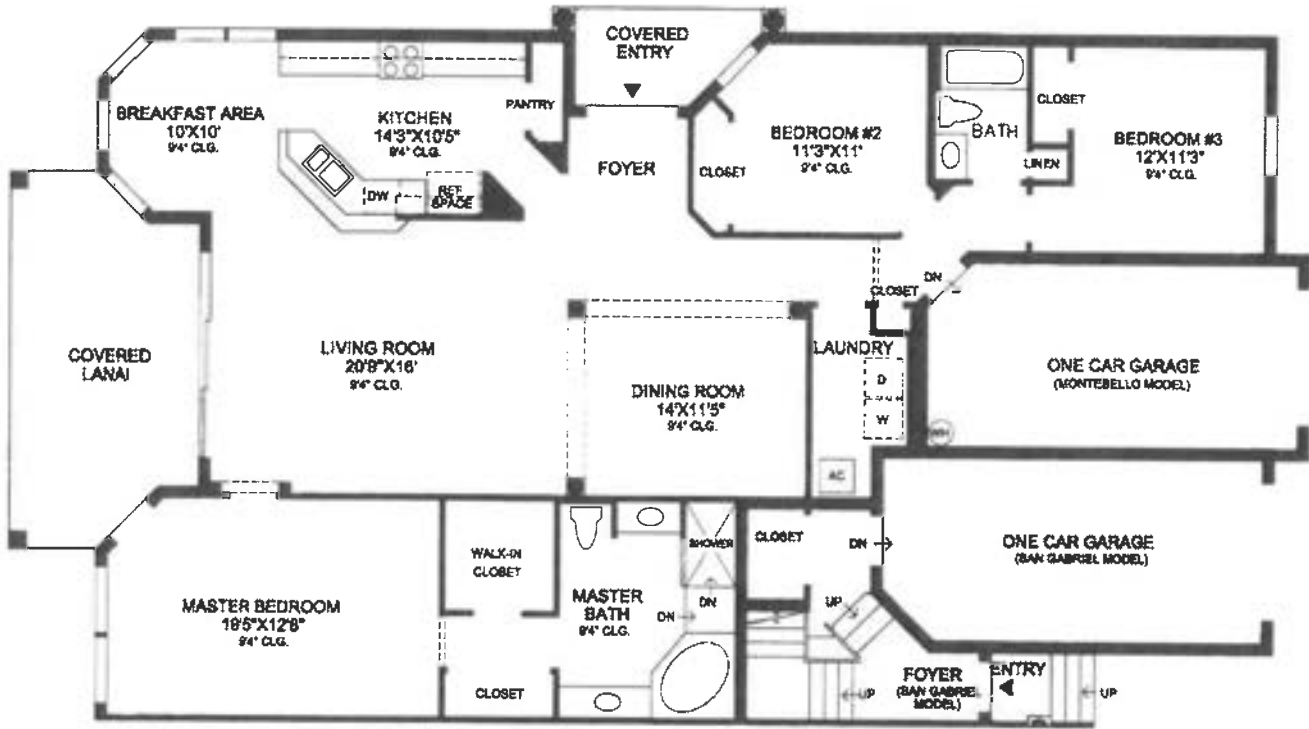
Air Conditioned Living Area	1778 sf
Covered Lanai	280 sf
<b>Total</b>	<b>2058 sf</b>

\* Square footage is based on dimensions taken from exterior walls to the middle of the party/common wall.

The floorplans and elevations of *Toll Brothers* homes are copyrighted. We have enforced and will continue to enforce our federal copyrights to protect the investment of our homebuyers.

This insert was produced using recycled products.





FIRST FLOOR LIVING UNIT

# THE MONTEBELLO

The foyer opens to the spacious design of the formal dining and living rooms.

Kitchen includes a large pantry and breakfast area with open views to the living room.

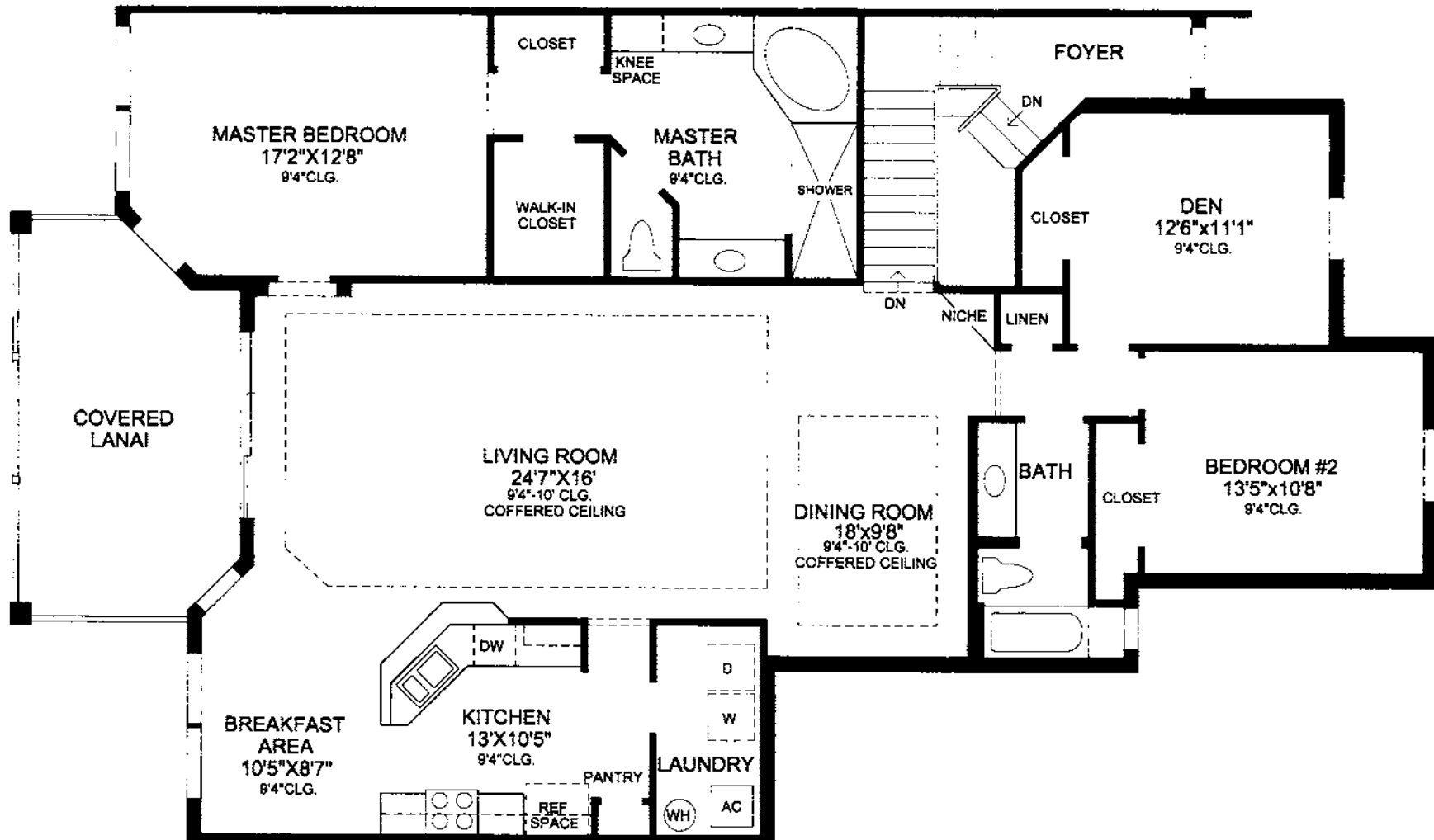
Large master bedroom has a private bath with dual vanities, soaking tub, and shower.

Convenient interior laundry room.

3 bedrooms, 2 baths.

Air Conditioned Living Area	1908 sf
Covered Lanai	213 sf
Covered Entry	56 sf
Garage	<u>264 sf</u>
Total	2441 sf

2 bedrooms, 2 baths.



SECOND FLOOR LIVING UNIT

# THE RIALTO

Two story foyer leads to the second floor living area.

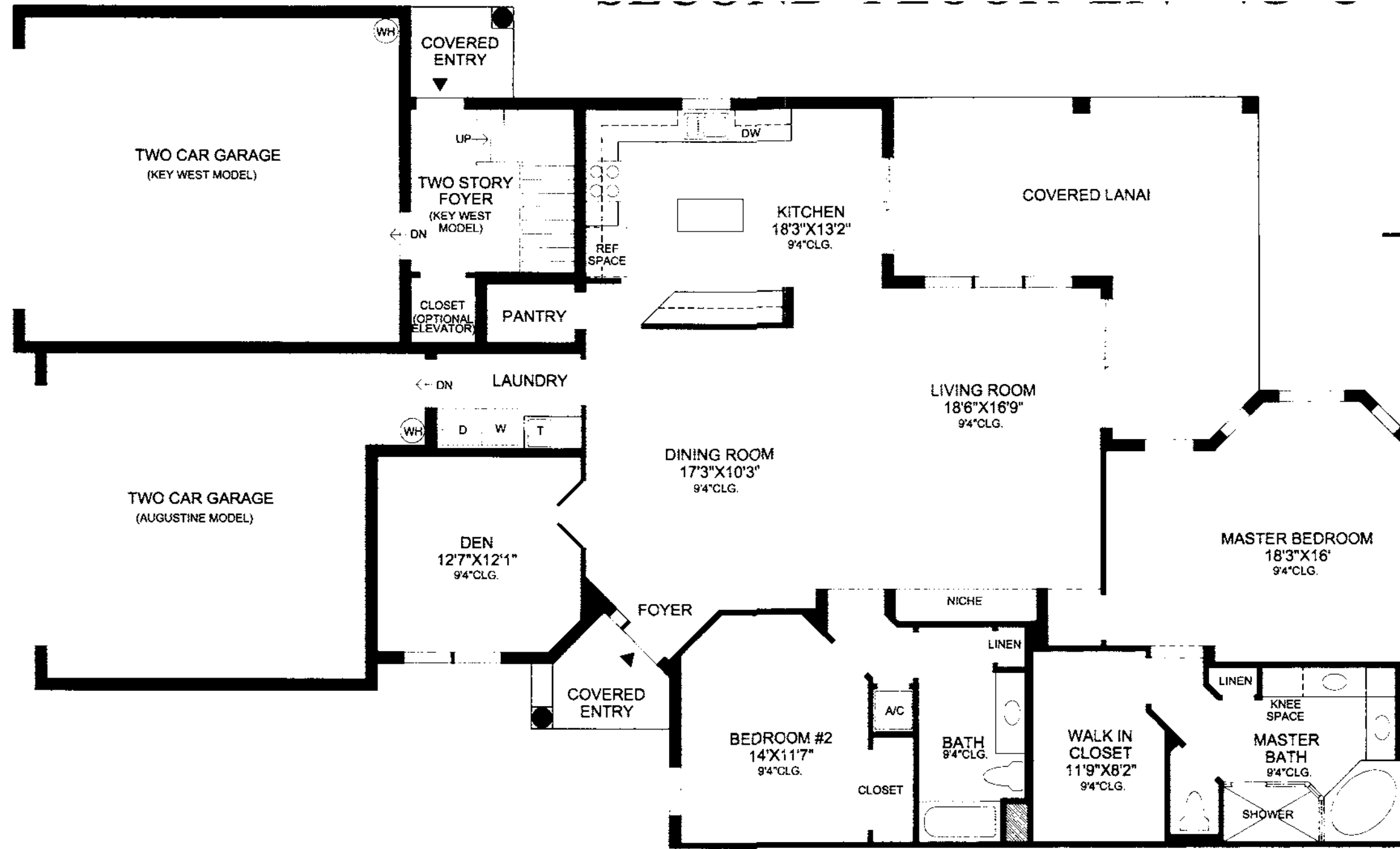
The dramatic design of the dining and living rooms, kitchen and breakfast area is enhanced with open exterior views.

The easily accessible and well-equipped kitchen features a sit down breakfast area.

Master bedroom has access to the covered lanai and features a bath with dual vanities, soaking tub and shower. 2 bedrooms, den, 2 baths.

Air Conditioned Living Area	1975 sf
Covered Lanai	190 sf
Garage	253 sf
<b>Total</b>	<b>2418 sf</b>





# THE AUGUSTINE

The open view from the foyer encompasses the living, dining, kitchen areas and the outdoor covered lanai.

Private den is adjacent to the foyer.

Spacious kitchen includes an island, ample counterspace and breakfast area.

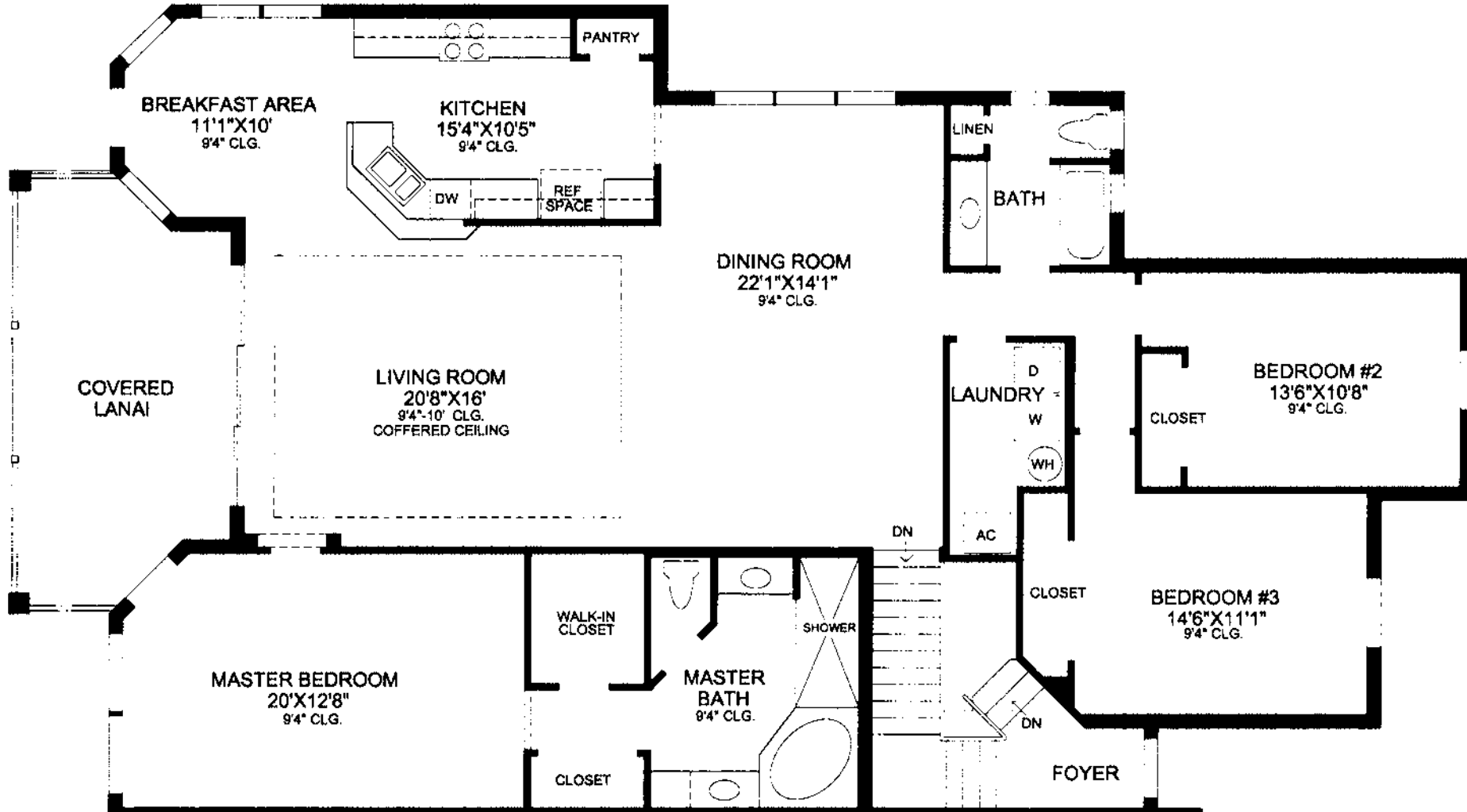
The master bedroom suite features excellent exterior views, a large master bath, walk in closet and private entrance to the lanai.

2 bedrooms, 2 baths.

Air Conditioned Living Area	2030 sf
Covered Lanai	331 sf
Covered Entry	43 sf
Garage	458 sf
<b>Total</b>	<b>2862 sf</b>

\* Square footage is based on dimensions taken from exterior walls to the middle of the party/common wall.

## FIRST FLOOR LIVING UNIT



SECOND FLOOR LIVING UNIT

# THE SAN GABRIEL

Two story foyer features a handsome turned stair to the second floor living area.

Formal dining room opens into the large living room.

Kitchen features a sunlit breakfast area, ample counterspace and open design to the living room.

Private master bedroom includes a walk in closet and fully equipped bath.

3 bedrooms, 2 baths.

Air Conditioned Living Area	2184 sf
Covered Lanai	213 sf
Garage	267 sf
Total	<u>2664 sf</u>

The floorplans and elevations of **Toll Brothers** homes are copyrighted. We have enforced and will continue to enforce our federal copyrights to protect the investment of our homebuyers.

# THE FRANKLIN COLLECTION

Elegant foyer opens onto a formal living room with coffered ceiling.

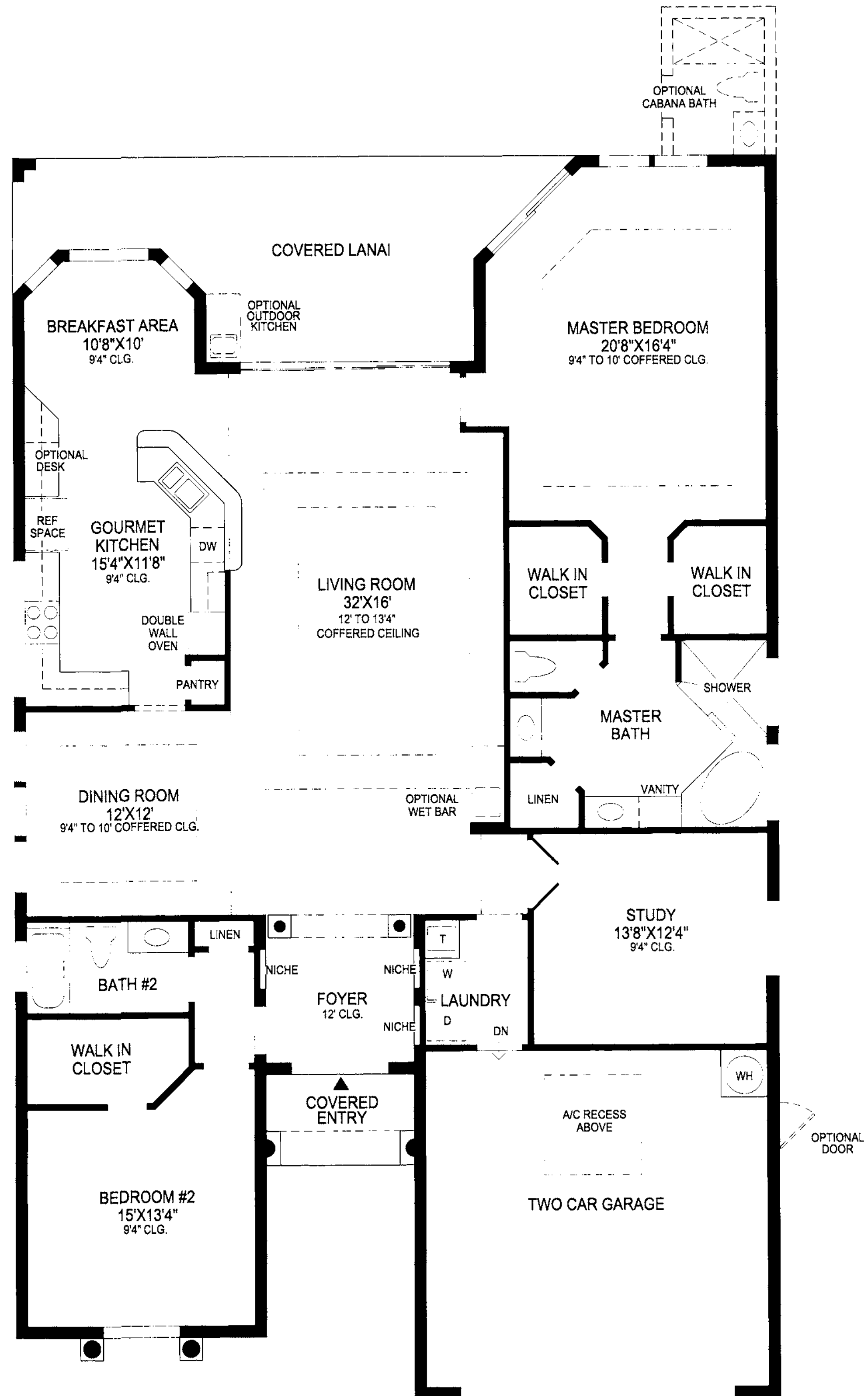
Spacious kitchen comes complete with pantry and adjoins the beautiful dining room and sunlit breakfast area.

Private study with double door entry.

Master bedroom includes two walk in closets and luxurious master bath with dual vanities and Roman tub.

2 bedrooms plus study, 2 baths.

Air Conditioned Living Area	2,327 sf
Covered Lanai	274 sf
Covered Entry	46 sf
Garage	433 sf
<b>Total</b>	<b>3,080 sf</b>



## FLOOR PLAN

**Toll Brothers**  
America's Luxury Home Builder™

www.tollbrothers.com

All dimensions are approximate and are subject to field variations. Some windows and floor plans may vary with elevations. Some features may vary from community to community. Please consult Sales Manager for details. Options purchased must be specified in exhibit B.

(FL-NLLP/6154) 1226 ©2000 TOLL BROTHERS, INC.

The floorplans and elevations of Toll Brothers homes are copyrighted. We have enforced and will continue to enforce our federal copyrights to protect the investment of our homebuyers.

This insert was produced using recycled products. ♻️

# THE ST. LAWRENCE COLLECTION

From the dramatic entry, the foyer opens to the formal dining room and the unique living room.

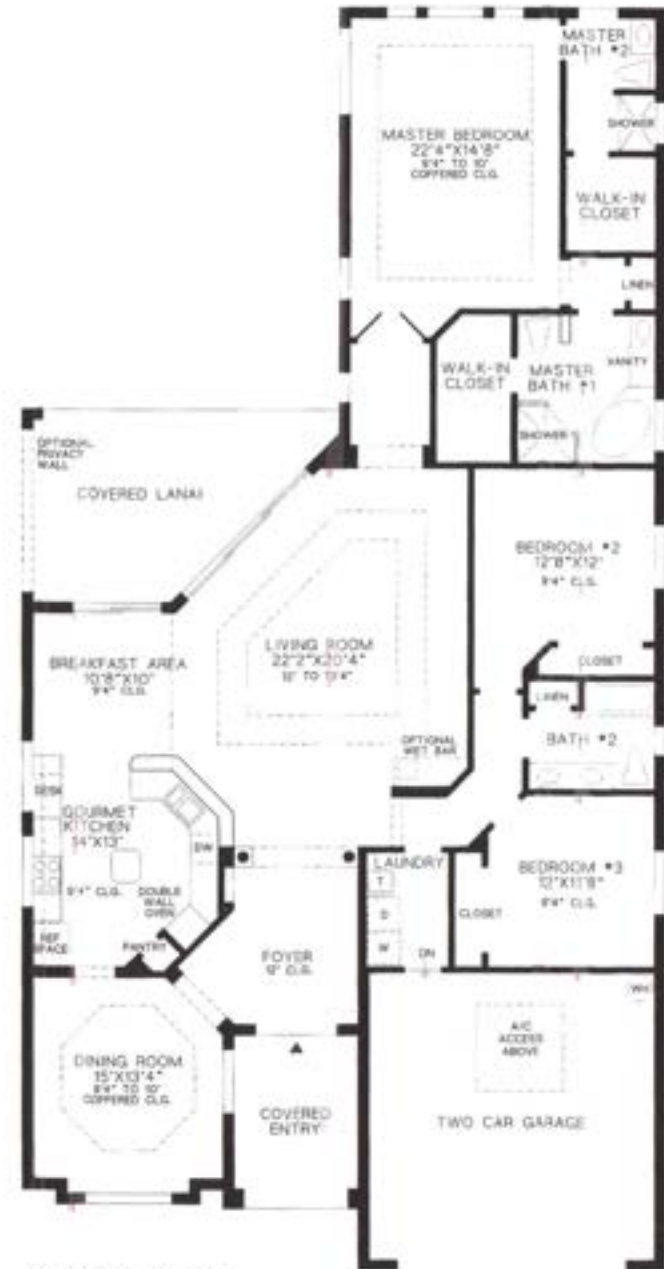
The convenient gourmet kitchen includes a pantry with easy access to the open breakfast area.

The elegant coffered living room adjoins the breakfast area and the covered lanai, making it an ideal space for family and entertaining.

The large master bedroom suite features two large walk in closets and two baths, one with a Roman tub.

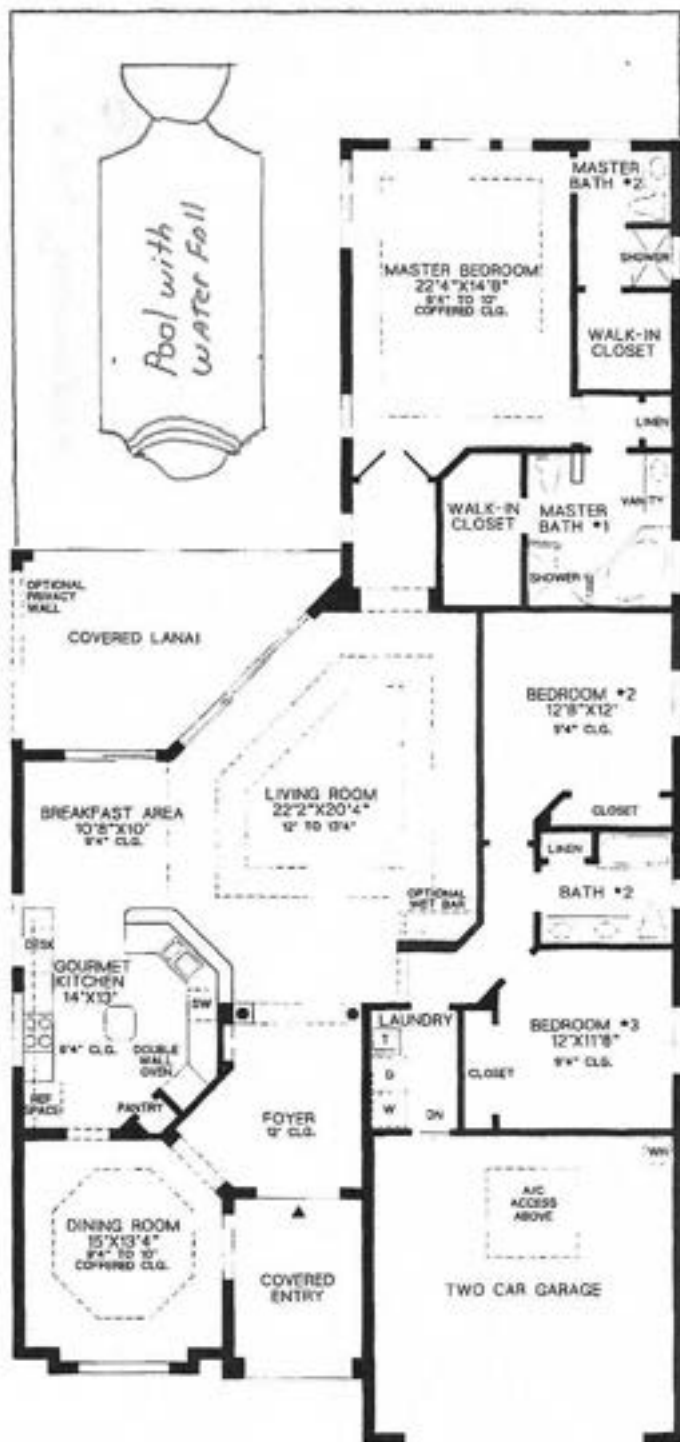
3 bedrooms, 3 baths.

Air Conditioned Living Area	2422 sf
Covered Lanai	225 sf
Covered Entry	115 sf
Garage	438 sf
<b>Total</b>	<b>3200 sf</b>



FLOOR PLAN

Dimensions are approximate and are subject to field variations. Some windows and floor plans may vary without notice. Please consult your sales representative for more information. Please call your sales representative for more information. Dimensions are approximate and are subject to field variations. Some windows and floor plans may vary without notice. Please consult your sales representative for more information. Please call your sales representative for more information.



FLOOR PLAN

The description and dimensions of "Toll Brothers" homes are copyrighted. We have referred and will continue to refer to Toll Brothers in general for the convenience of our clients. This document was produced using a word processing program.

# THE KEY WEST

Two story foyer features a turned stair leading to the living areas.

Sunlit living room opens onto a covered lanai.

The open design of the kitchen includes an island countertop and breakfast area.

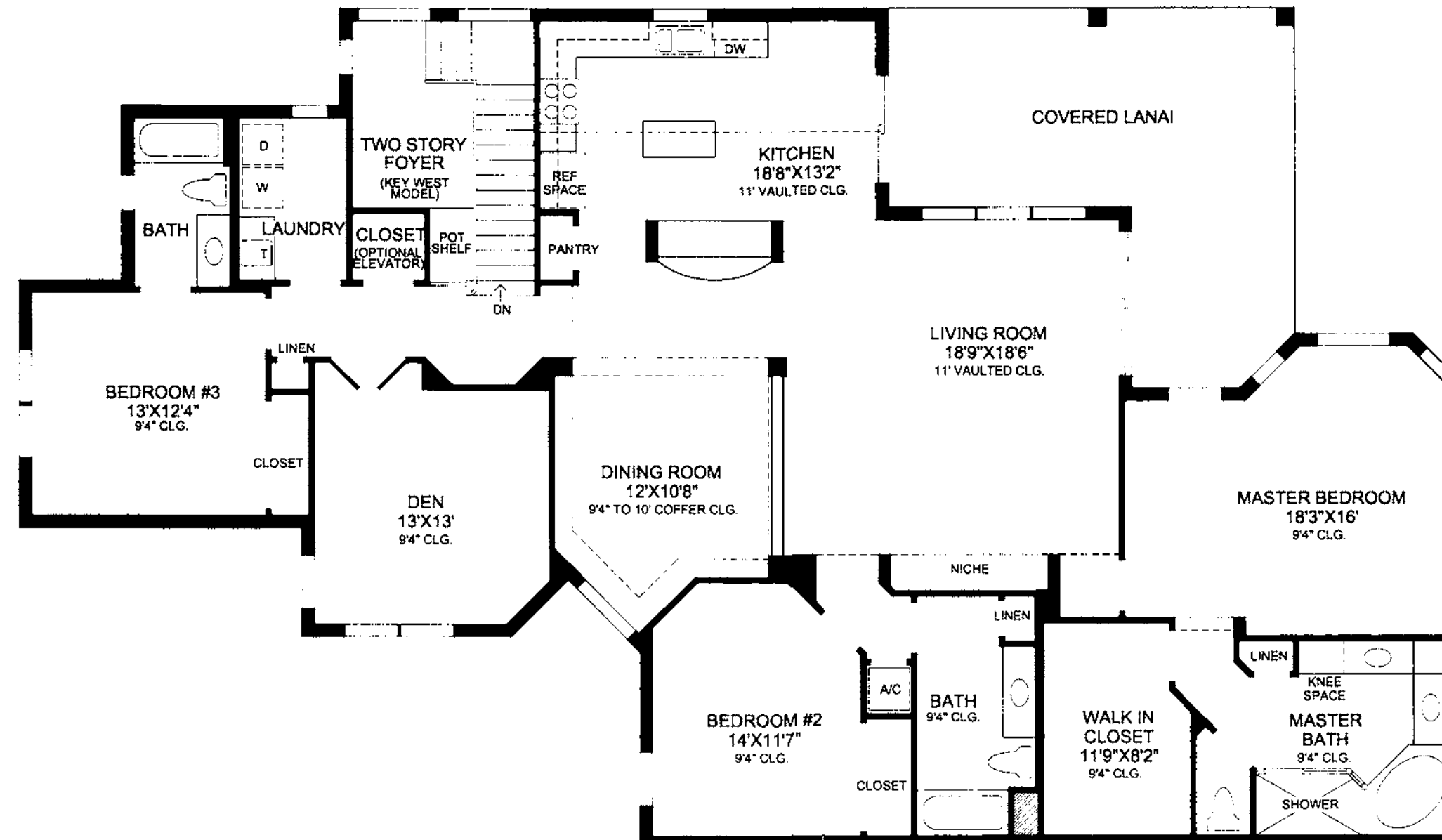
Large den is ideally suited for a home office.

Master bedroom suite features exterior views through multiple windows, and a spacious master bath with dual vanities and soaking tub.

3 bedrooms, 3 baths.

Air Conditioned Living Area	2531 sf
Covered Lanai	331 sf
Covered Entry	34 sf
Garage	507 sf
<b>Total</b>	<b>3403 sf</b>

\* Square footage is based on dimensions taken from exterior walls to the middle of the party/common wall.



## SECOND FLOOR LIVING UNIT

# THE SARANAC COLLECTION

Foyer opens to a formal living room.

Kitchen has ample space with a pantry and breakfast area.

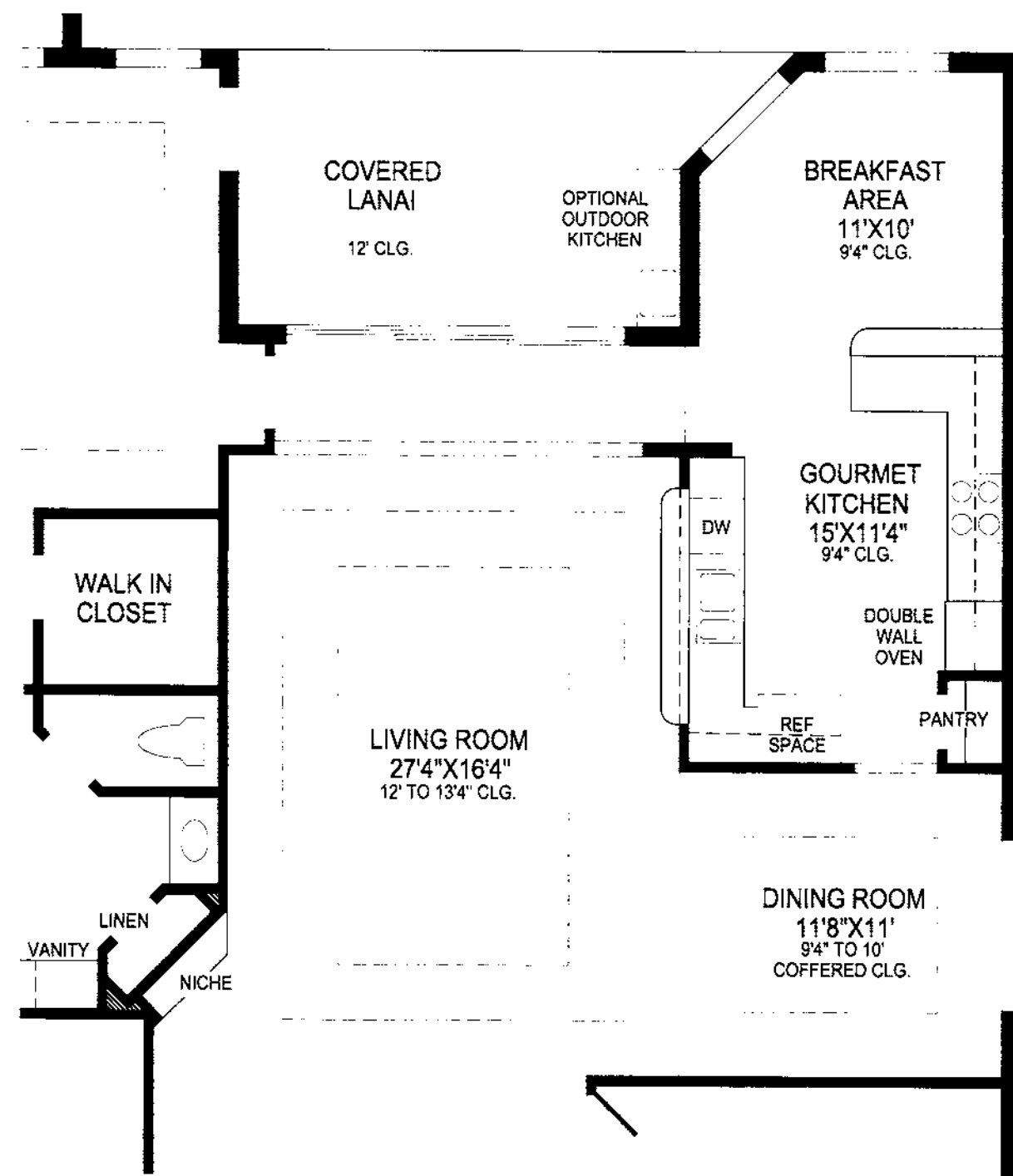
Elegant dining room is convenient to the kitchen.

Private study with double door entry.

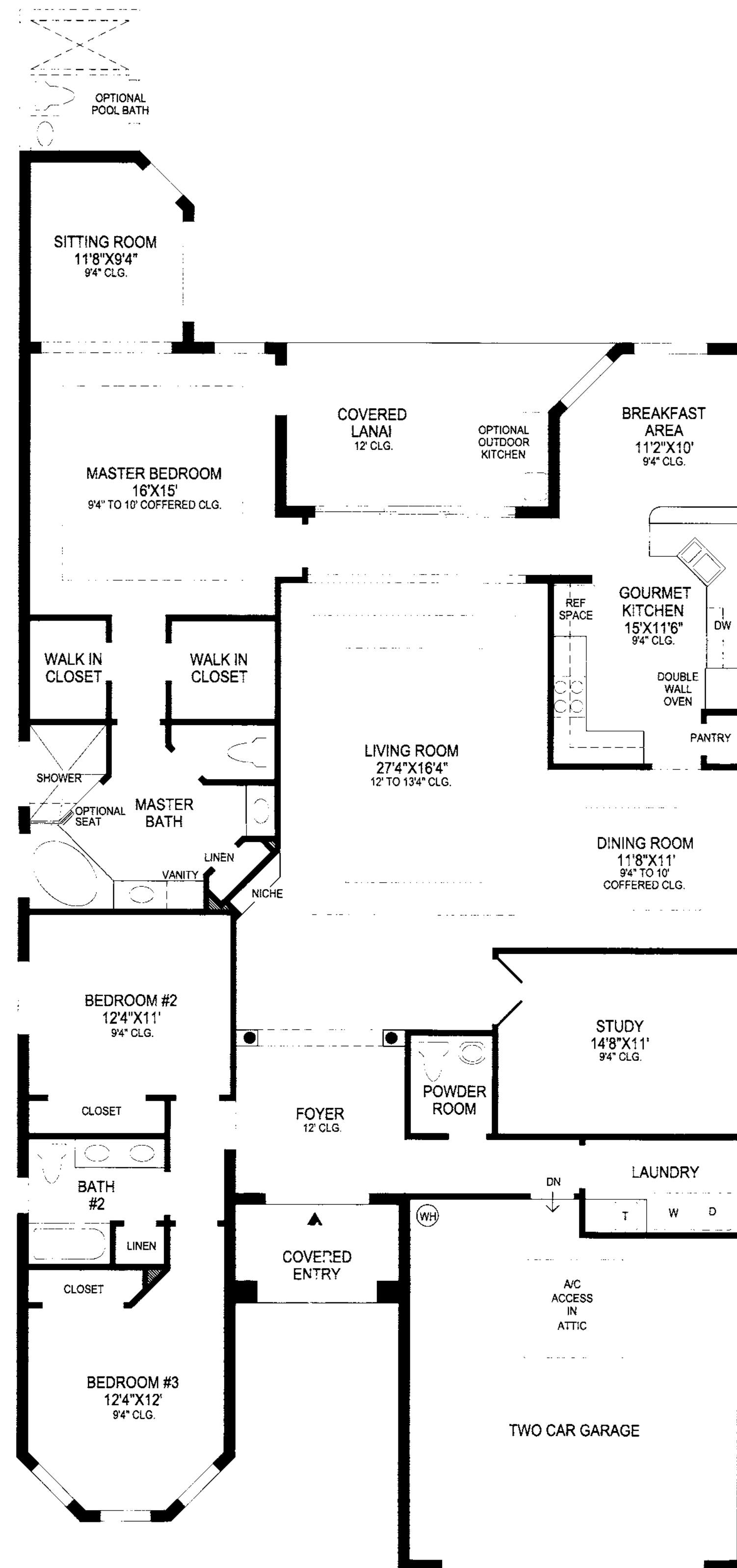
Master bedroom includes two walk in closets and luxurious master bath with dual vanities, shower and Roman tub.

3 bedrooms plus study, 2½ baths.

Air Conditioned Living Area	2,562 sf
Covered Lanai	168 sf
Covered Entry	60 sf
Garage	459 sf
<b>Total</b>	<b>3,249 sf</b>



OPTIONAL ALTERNATE KITCHEN LAYOUT



## FLOOR PLAN

**Toll Brothers**  
 America's Luxury Home Builder™  
 www.tollbrothers.com

The floorplans and elevations of Toll Brothers homes are copyrighted. We have enforced and will continue to enforce our federal copyrights to protect the investment of our homebuyers.

This insert was produced using recycled products. ♻️

# THE SANDPIPER COLLECTION

This beautiful home has many special features, such as a covered entry, open foyer that leads to a spacious great room with access to the covered lanai, well equipped kitchen which includes a pantry with adjoining breakfast area and dining room.

The expensive master bedroom with coffered ceiling and private access to covered lanai has many amenities such as two walk-in closets, luxurious master bath with dual vanities, private toilet area, and soaking tub.

Additional features found within this home include private den with double door entry and two car garage.

Air Conditioned Living Area	2634 sf
Covered Lanai	287 sf
Covered Entry	74 sf
Garage	540 sf
Total	<u>3535 sf</u>







# THE ARAGON COLLECTION

Double door entrance opens to the spacious foyer with a soaring 13' ceiling.

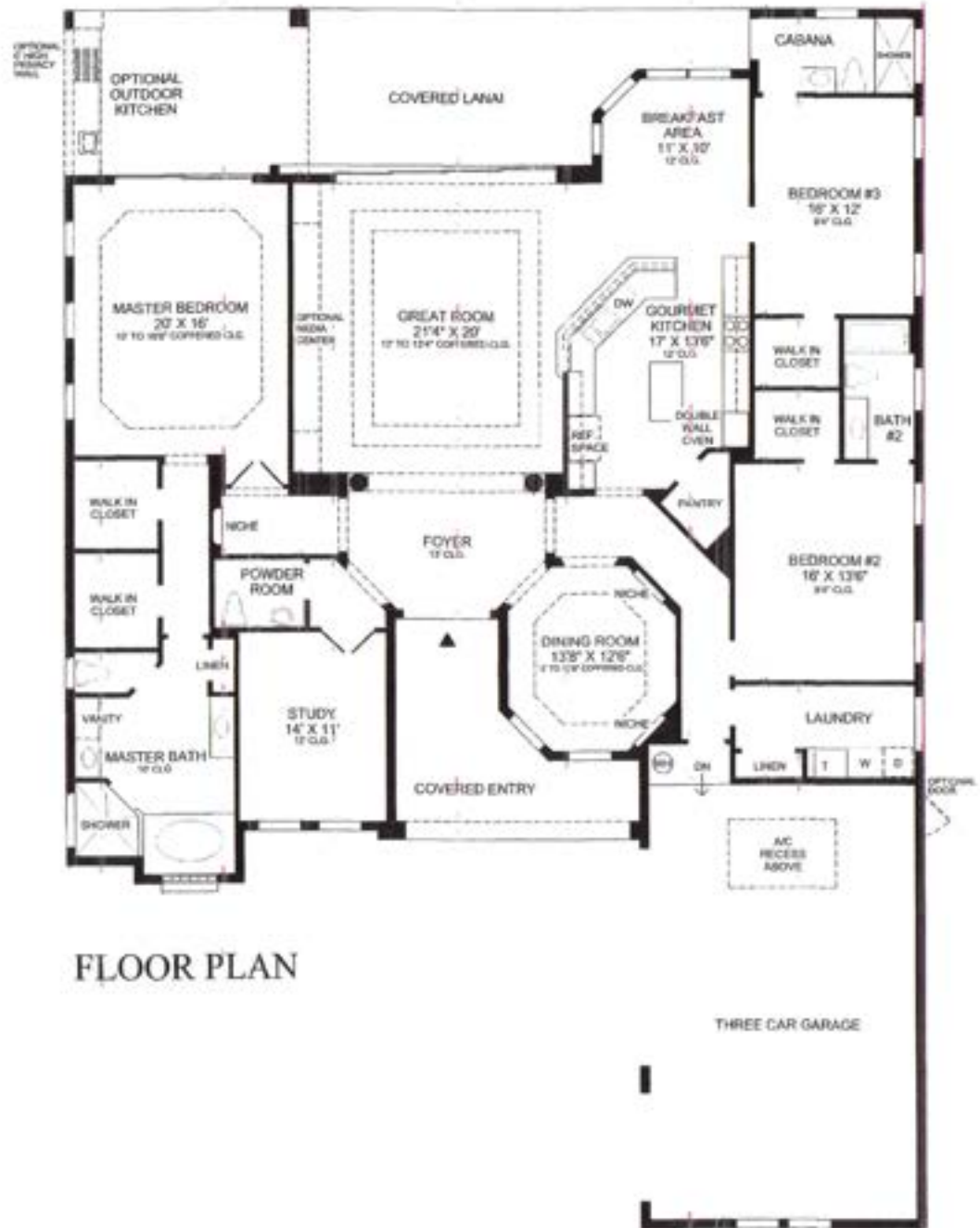
Open floor plan is ideal for indoor/outdoor entertaining.

Spacious kitchen features a sunlit breakfast area with open views of the covered lanai.

Luxurious master bedroom suite, complete with two walk in closets, separate vanity with private toilet and shower.

3 bedrooms, study, 2½ baths and cabana.

Air Conditioned Living Area	3117 sf
Covered Lanai	517 sf
Covered Entry	192 sf
Garage	717 sf
<b>Total</b>	<b>4543 sf</b>



FLOOR PLAN

All room dimensions are approximate, shown to the maximum dimensions of each room, and are subject to field verification. Dimensions should not be used to calculate room square footage. Some windows and floor plans may vary with elevations. Some features may vary from community to community. Please consult a Sales Manager for details. Options and finishes must be specified in exhibit B.  
 (PL-011209) 4/10/24 ©2024 TOLL BROTHERS, INC.



The floorplans and elevations of Toll Brothers homes are copyrighted. We have authorized and will continue to authorize the licensed copyright holders to produce the presentation of our floorplans/™.

# THE ROYALE COLLECTION

Soaring foyer opens to an expansive living room highlighted by a large curved window.

Well equipped kitchen adjacent to open breakfast area.

Generous family room opens to large covered lanai.

Home features private study with adjacent powder room.

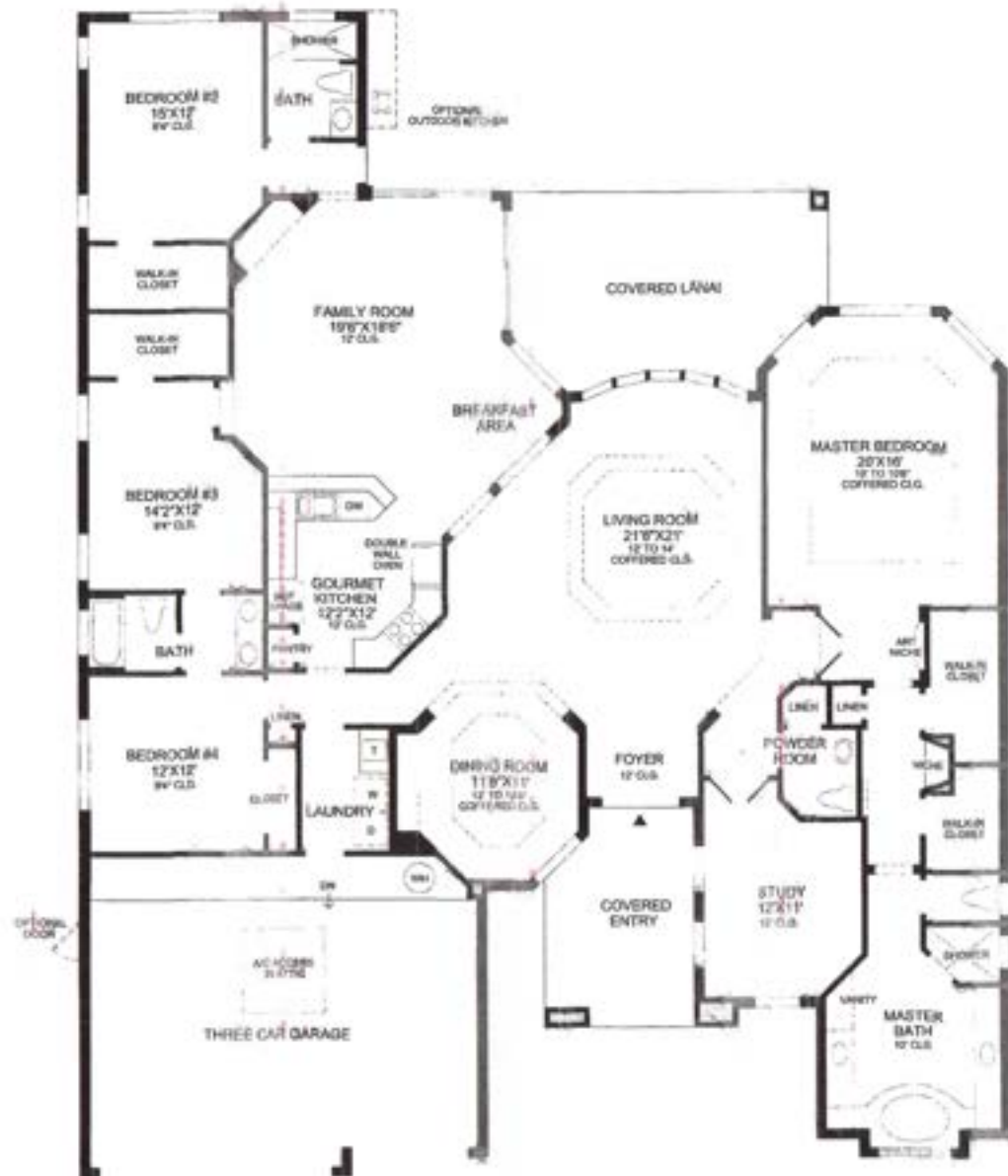
Spacious master bedroom suite features coffered ceiling, two large walk in closets and luxurious bath complete with two vanities, separate shower and Roman tub with glass block window.

4 bedrooms, 3 1/2 baths and study.

Air Conditioned Living Area	3,136 sf
Covered Entry	147 sf
Covered Lanai	260 sf
Garage	598 sf
Total	4,141 sf



OPTIONAL GUEST SUITE



FLOOR PLAN

# THE MONARCH COLLECTION

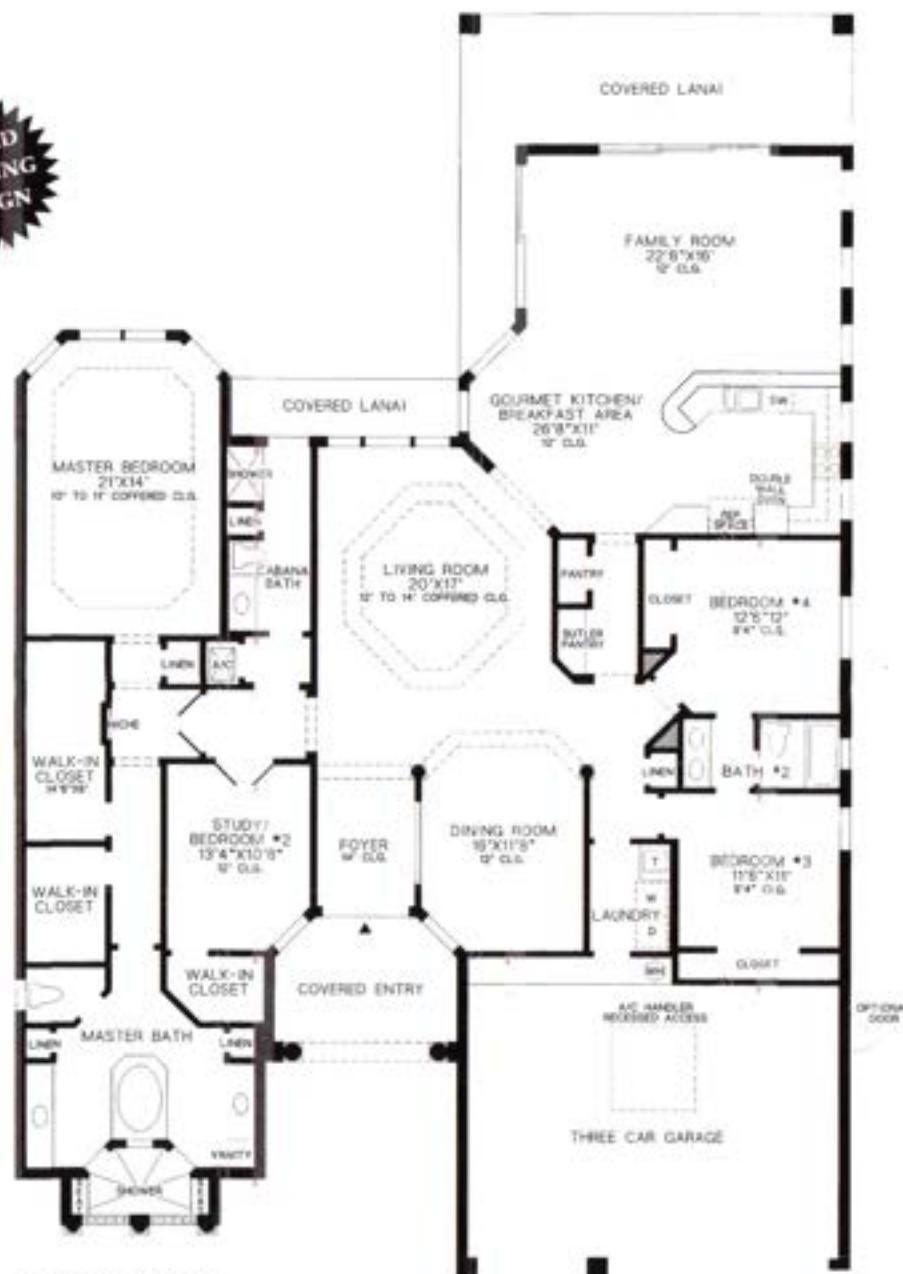
A welcoming double door entry with a foyer that opens to the formal area designed for convenient entertaining. The spacious kitchen, equipped with many amenities and breakfast area, is centrally located to the living and entertaining area. The sunny family room is accessible to the covered lanai and overlooks the rear yard.

The sumptuous master bedroom suite not only establishes its own wing of the home, but also offers an array of standard features to include two walk-in closets, a coffered ceiling and a comprehensive bath complete with dual vanities and a Roman soaking tub.

Additional features found within this home include a private den conveniently located off the foyer, two additional bedrooms and baths, and a three car garage.



Air Conditioned Living Area	3160 sf
Covered Lanai	320 sf
Covered Entry	128 sf
Garage	604 sf
<b>Total</b>	<b>4212 sf</b>



FLOOR PLAN

All dimensions are approximate and are subject to field conditions. Some windows and floor plans may vary with elevations. Some features may vary from community to community. Please consult Sales Manager for details. Options purchased must be specified in writing. © 2000 Toll Brothers Inc.

**Toll Brothers**  
Quality Homes By Design®

The floorplan and elevation of Toll Brothers houses are copyrighted. To have redrawn and will continue to enforce our federal copyrights to protect the investment of our homebuyers. This house was produced using recycled products. ♻️



# THE OSPREY COLLECTION

The splendid Osprey collection is unparalleled in stature.

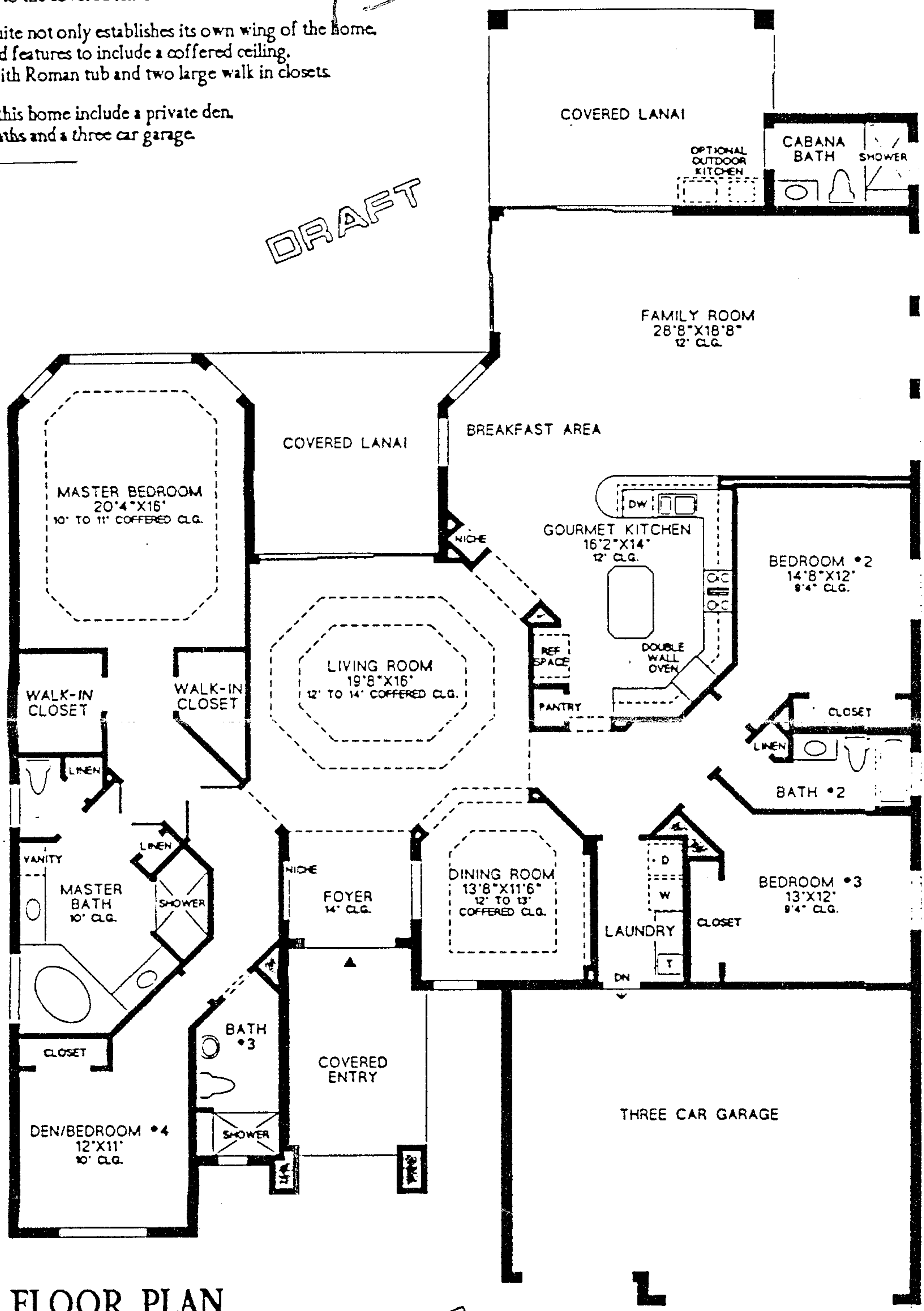
This charismatic home is accentuated with many special features, such as a living room complete with views of the rear yard, a formal dining room, a well appointed kitchen with adjoining breakfast area, and a family room accessible to the covered lanai.

The expansive master bedroom suite not only establishes its own wing of the home, but also offers an array of standard features to include a coffered ceiling, a comprehensive bath complete with Roman tub and two large walk in closets.

Additional features found within this home include a private den, two additional bedrooms, three baths and a three car garage.

*REVERSE LAYOUT*

DRAFT



FLOOR PLAN

DRAFT

All dimensions are approximate and are subject to field variations. Some windows and floor plans may vary with elevations. Some features may vary from community to community. Please consult Sales Manager for details. Options purchased must be specified in exhibit B.  
BLLT 7/99 811 6 1/2" TOLL BROTHERS, INC.

**Toll Brothers**  
Quality Homes By Design®