

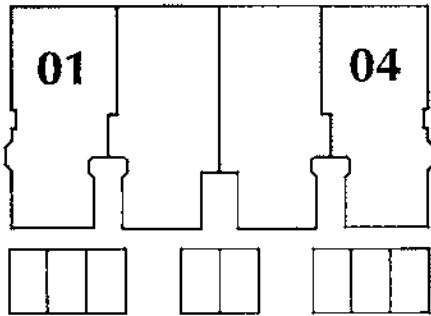
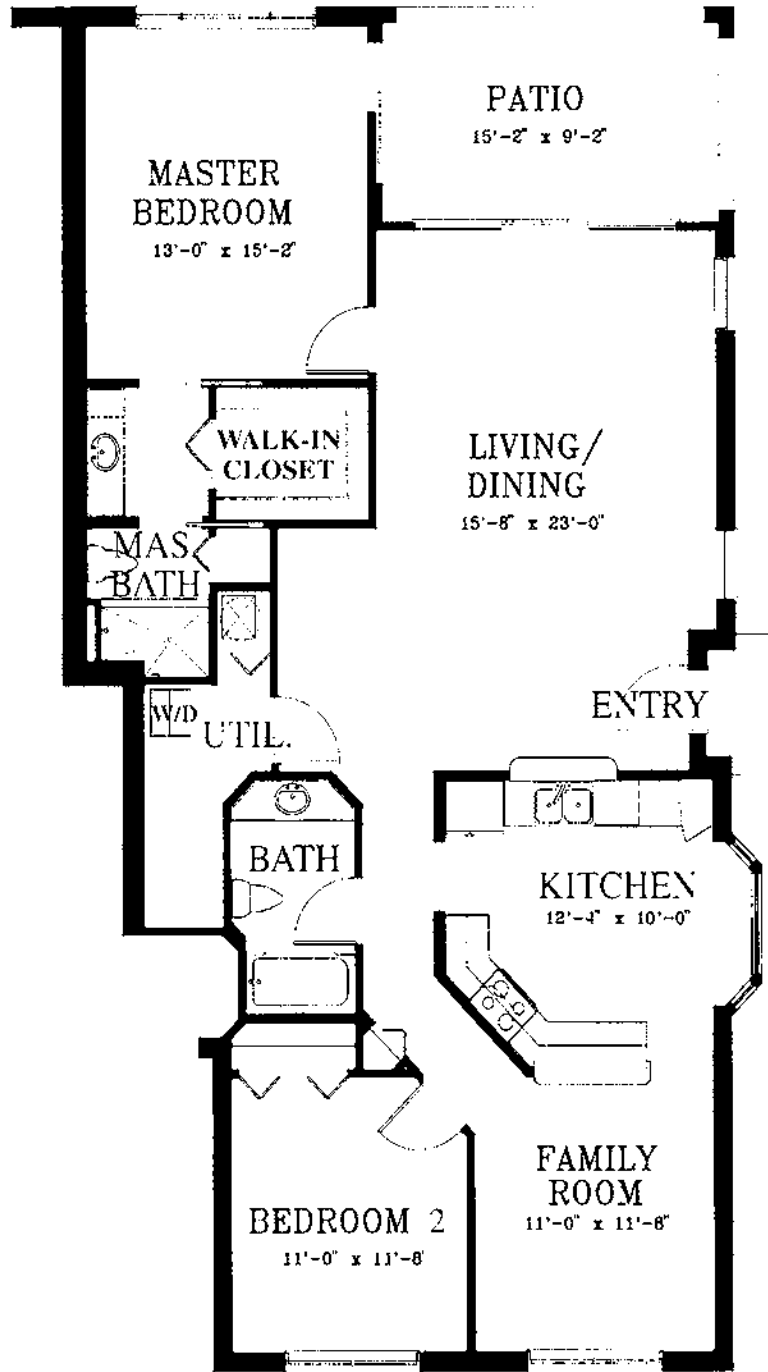
Floor Plans

These floor plans have been assembled as a resource for you. They may not be inclusive of every home in the community.

Please note that over time, owners may make modifications to spaces that may not be captured in these original floor plans.

Renderings are not a guarantee of space measurement. Interested parties should verify through their own secured services.

WEDGE WOOD
AT PELICAN STRAND



Augusta I

Two Bedroom, Family Room, Two Bath
or Three Bedroom, Two Bath

First Floor Residence

Air Conditioned Living Area	1449 sq. ft.
Lanai	154 sq. ft.
Garage	272 sq. ft.

TOTAL AREA 1875 sq. ft.

© 1998, The Jack Parker Corporation

All dimensions are approximate. Actual dimensions may vary. Only a presentation cannot be relied upon as correctly stating the representations of the Developer. For correct responsibility, make reference to the sales contract prepared by Section 171301, Florida Statutes, to be signed by a Developer in a Buyer's Offer.



Egret I

Three Bedroom, Two Bath

First Floor Residence

A/C Living Area 1449 Sq. Ft.

Lanai 154 Sq. Ft.

TOTAL 1603 Sq. Ft.



Third Bedroom Option
Available for both
Egret I and Egret II

Egret II

Three Bedroom, Two Bath
Second Floor Residence

A/C Living Area 1478 Sq. Ft.

Lanai 154 Sq. Ft.

TOTAL 1632 Sq. Ft.



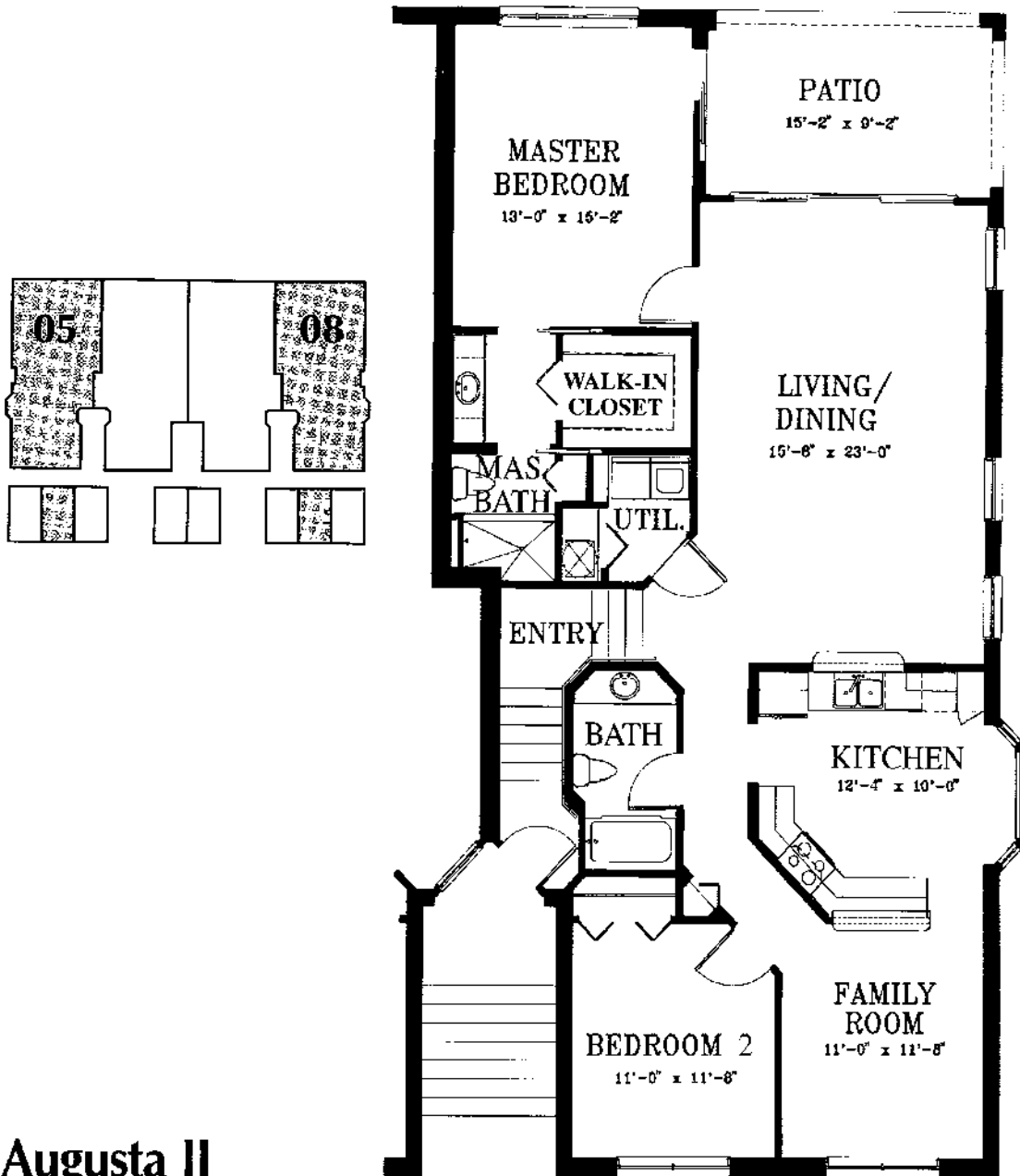
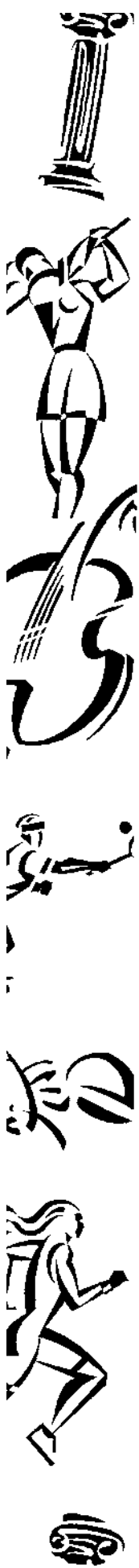
*Third Bedroom Option
Available for both
Egret I and Egret II*



WEDGE WOOD



AT PELICAN STRAND



Augusta II

Two Bedroom, Family Room, Two Bath
or Three Bedroom, Two Bath

Second Floor Residence

Air Conditioned Living Area	1478 sq. ft.
Lanai	154 sq. ft.
Garage	272 sq. ft.
TOTAL AREA	1904 sq. ft.

© 1998, The Jack Parker Corporation

All dimensions are approximate. Actual dimensions may vary. Oral representation cannot be relied upon as correctly stating the representations of the Developer. For correct representations, make reference to the document required by Section 718.503, Florida Statutes, to be furnished by a Developer to a Buyer or Lessee.



First Floor Residence

A/C Living Area 1490 Sq. Ft.

Lanai 150 Sq. Ft.

TOTAL 1640 Sq. Ft.

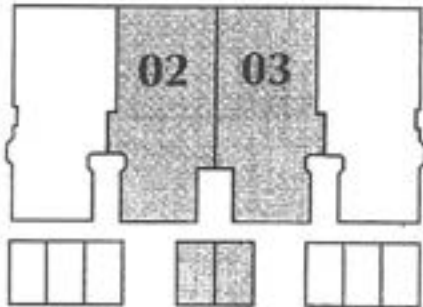


W E D G E



W O O D

AT PELICAN STRAND



Doral I

Two Bedroom, Family Room, Two Bath
or Three Bedroom, Two Bath

First Floor Residence

Air Conditioned Living Area	1490 sq. ft.
Lanai	150 sq. ft.
Garage	248 sq. ft.
TOTAL AREA	1888 sq. ft.

© 1998. The Jack Parker Corporation

All dimensions are approximate. Actual dimensions may vary. Oral representation cannot be relied upon as correctly stating the representations of the Developer. For correct representations, make reference to the documents required by Section 718.303, Florida Statutes, to be furnished by a Developer to a Buyer or Lessee.



Osprey II

Three Bedroom, Two Bath

Second Floor Residence

A/C Living Area 1540 Sq. Ft.

Lanai 150 Sq. Ft.

TOTAL 1690 Sq. Ft.



Alternate - Second Floor



Alternate - First Floor





Doral II

Two Bedroom, Family Room, Two Bath
or Three Bedroom, Two Bath

Second Floor Residence

Air Conditioned Living Area	1540 sq. ft.
Lanai	150 sq. ft.
Garage	248 sq. ft.
TOTAL AREA	1938 sq. ft.

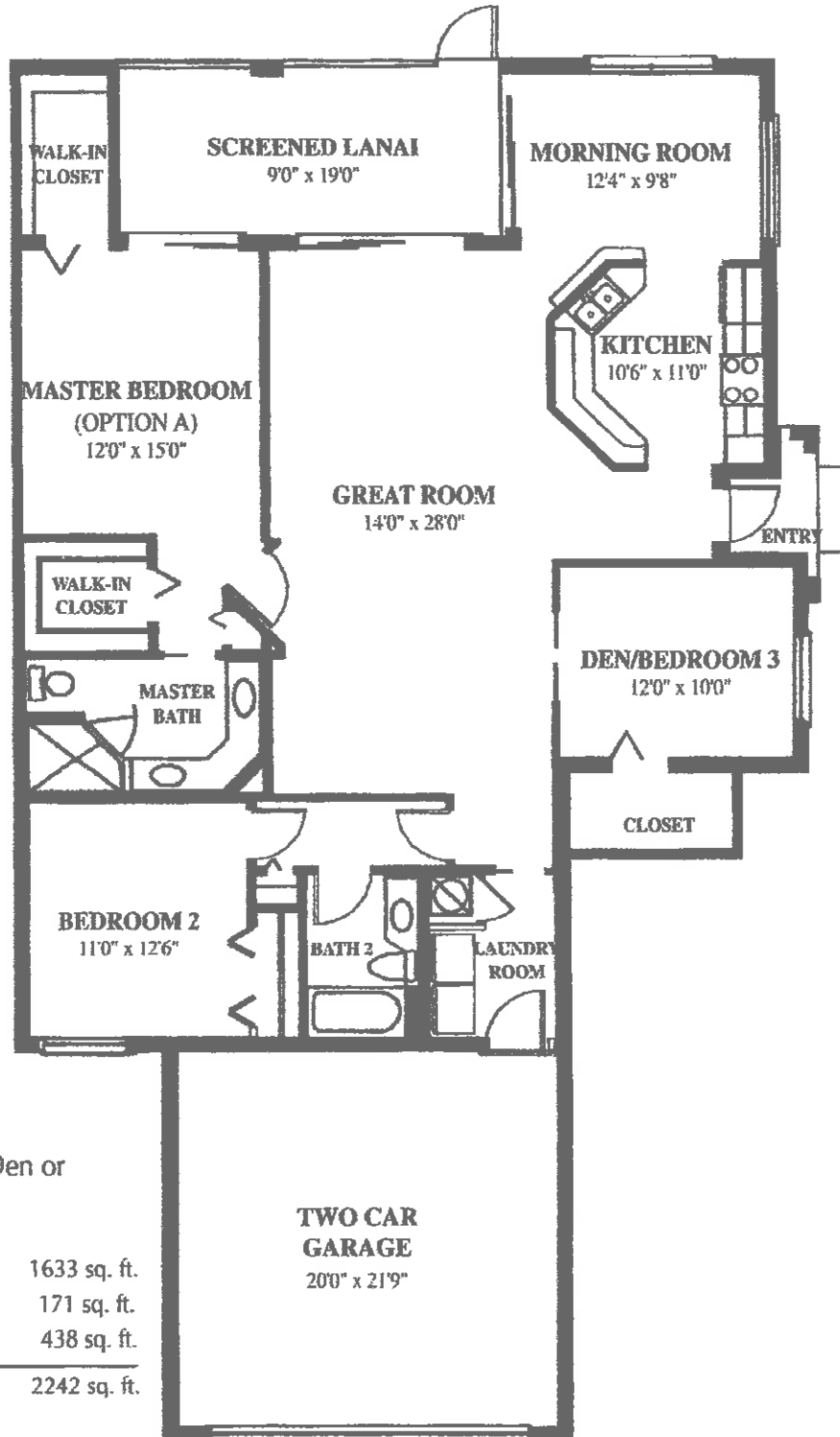
© 1998, The Jack Parker Corporation

All dimensions are approximate. Actual dimensions may vary. Oral representation cannot be relied upon as a substitute for the representations of the Developer. For correct representations, make reference to the document required by Section 7101.03, Florida Statutes, to be furnished by a Developer to a Buyer or Lessee.



Clubside

AT PELICAN STRAND



Greenbriar I

Two Bedroom, Two Bath, Den or
Three Bedroom, Two Bath

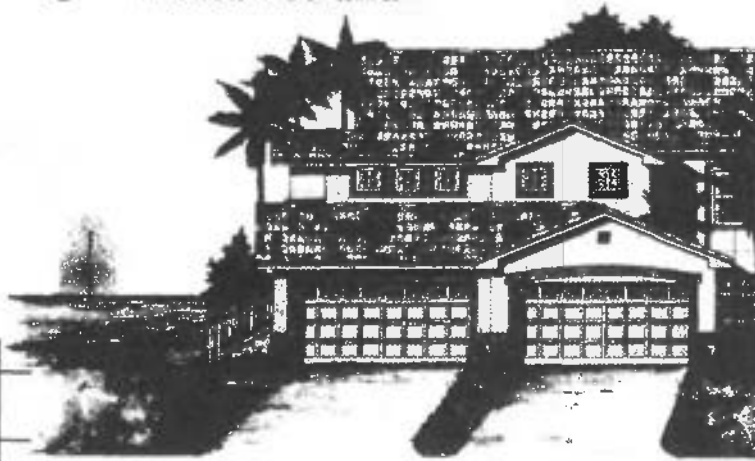
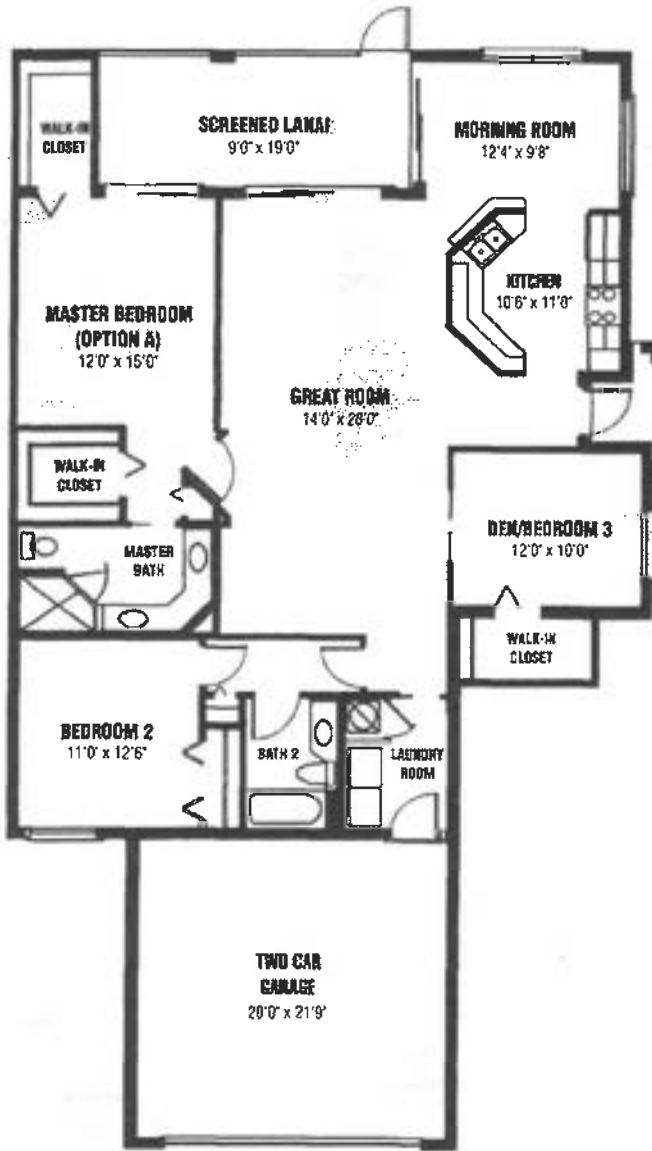
First Floor Residence

Air Conditioned Living Area	1633 sq. ft.
Lanai	171 sq. ft.
Two Car Garage	438 sq. ft.
TOTAL AREA	2242 sq. ft.

© 1998, The Jack Parker Corporation

All dimensions are approximate. Actual dimensions may vary. Civil representation cannot be relied upon as correctly stating the representations of the Developer. For correct representations, make reference in the document required by Section 718.503, Florida Statutes, to be furnished by a Developer to a Buyer or Lessee.

Cypress Cove at Pelican Strand



Whisperwood I

Three Bedroom, Two Bath

First Floor Residence

A/C Living Area 1633 Sq. Ft.

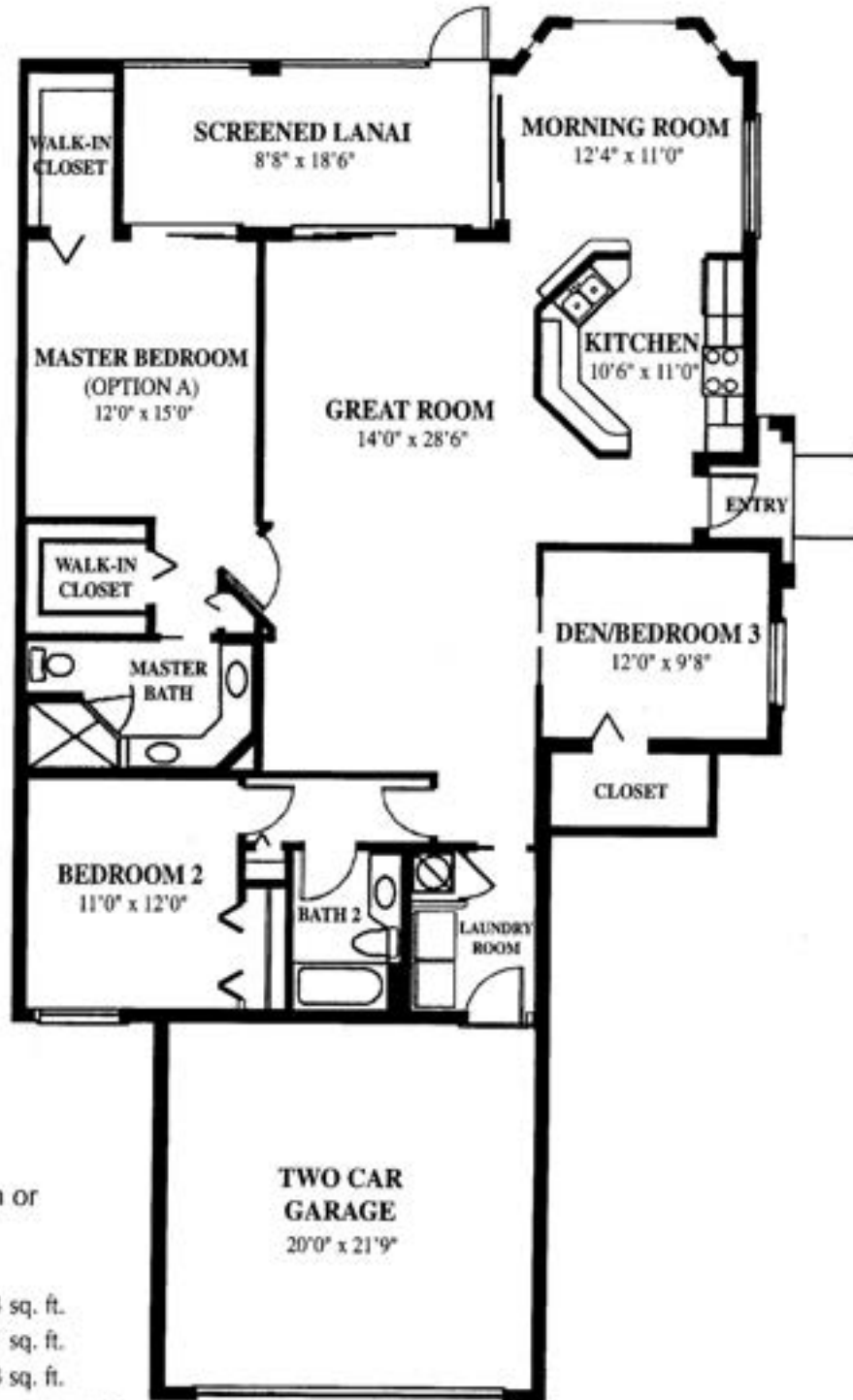
Lanai 171 Sq. Ft.

Two Car Garage 435 Sq. Ft.

TOTAL 2,239 Sq. Ft.

The Pinnacle

At The Strand



Stratford I

Two Bedroom, Two Bath, Den or
Three Bedroom, Two Bath

First Floor Residence

Air Conditioned Living Area	1633 sq. ft.
Lanai	171 sq. ft.
Two Car Garage	438 sq. ft.

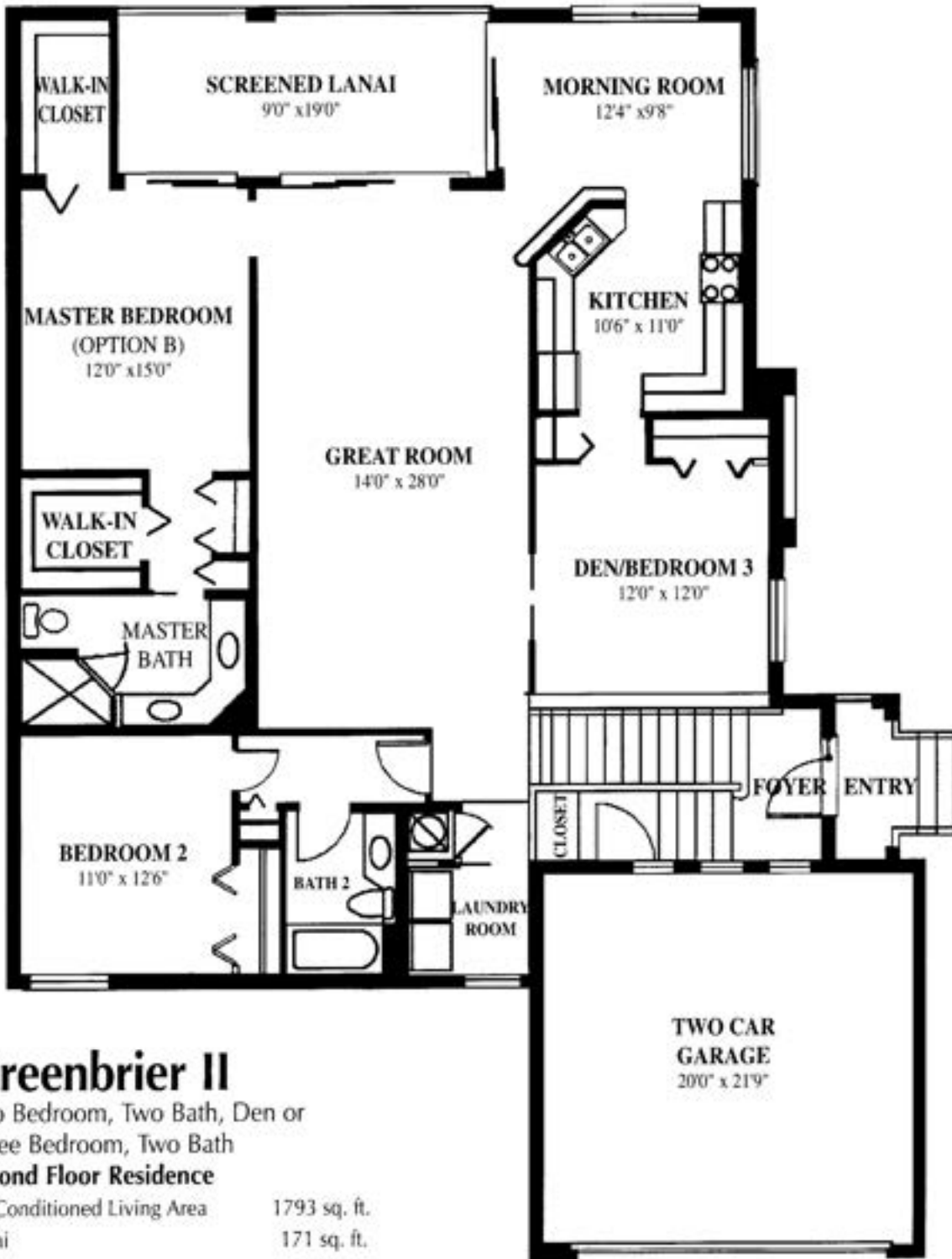
TOTAL AREA 2242 sq. ft.

© 2000, The Jack Parker Corporation

All dimensions are approximate. Actual dimensions may vary. Oral representation cannot be relied upon as correctly stating the representations of the Developer. For correct representations, make reference to the document required by Section 718.501, Florida Statutes, to be furnished by a Developer to a Buyer or Lessee.

Clubside

AT PELICAN STRAND



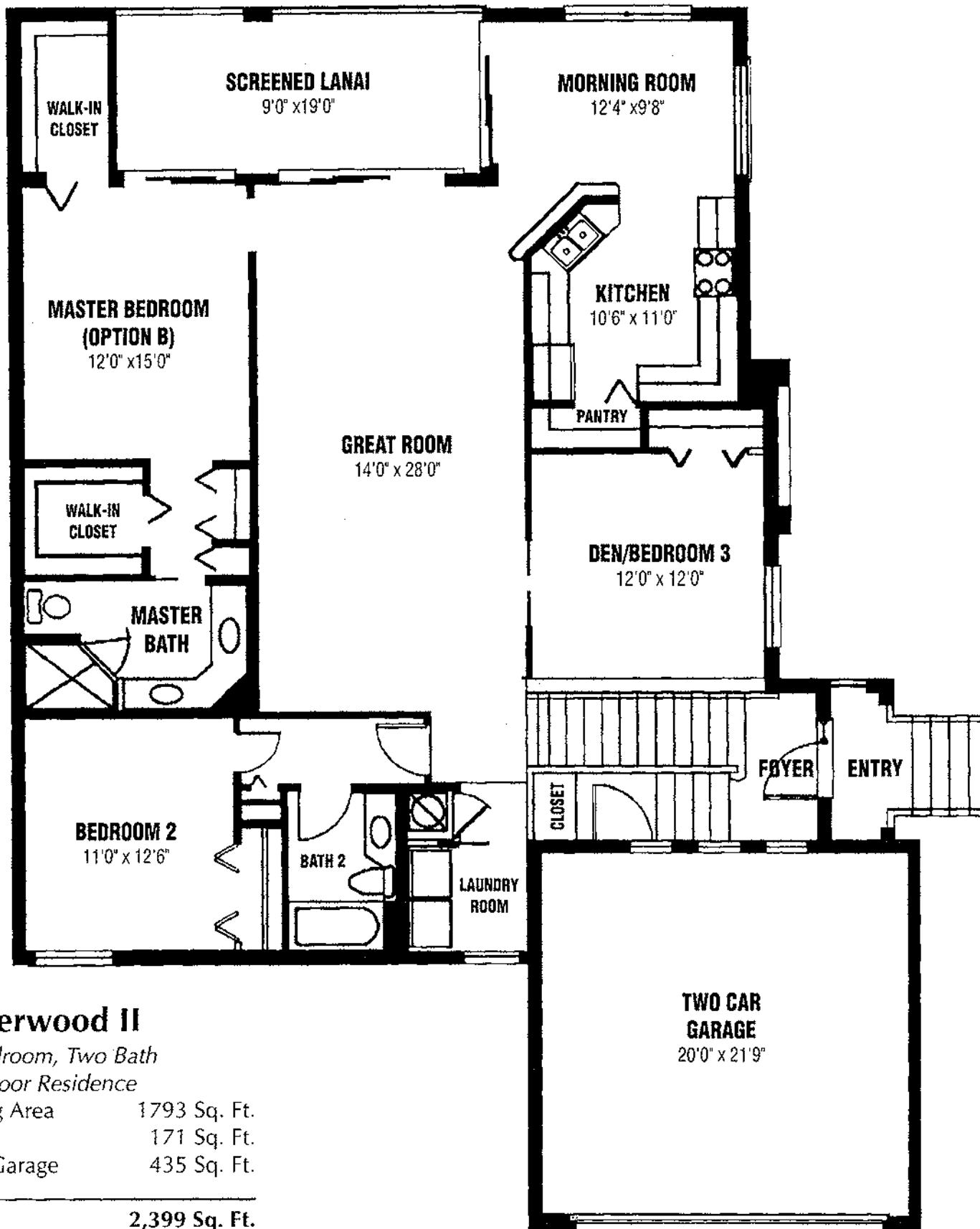
Greenbrier II

Two Bedroom, Two Bath, Den or
Three Bedroom, Two Bath

Second Floor Residence

Air Conditioned Living Area	1793 sq. ft.
Lanai	171 sq. ft.
Two Car Garage	438 sq. ft.
TOTAL AREA	2402 sq. ft.

© 1998, The Jack Parker Corporation



Whisperwood II

Three Bedroom, Two Bath
Second Floor Residence

A/C Living Area 1793 Sq. Ft.

Lanai 171 Sq. Ft.

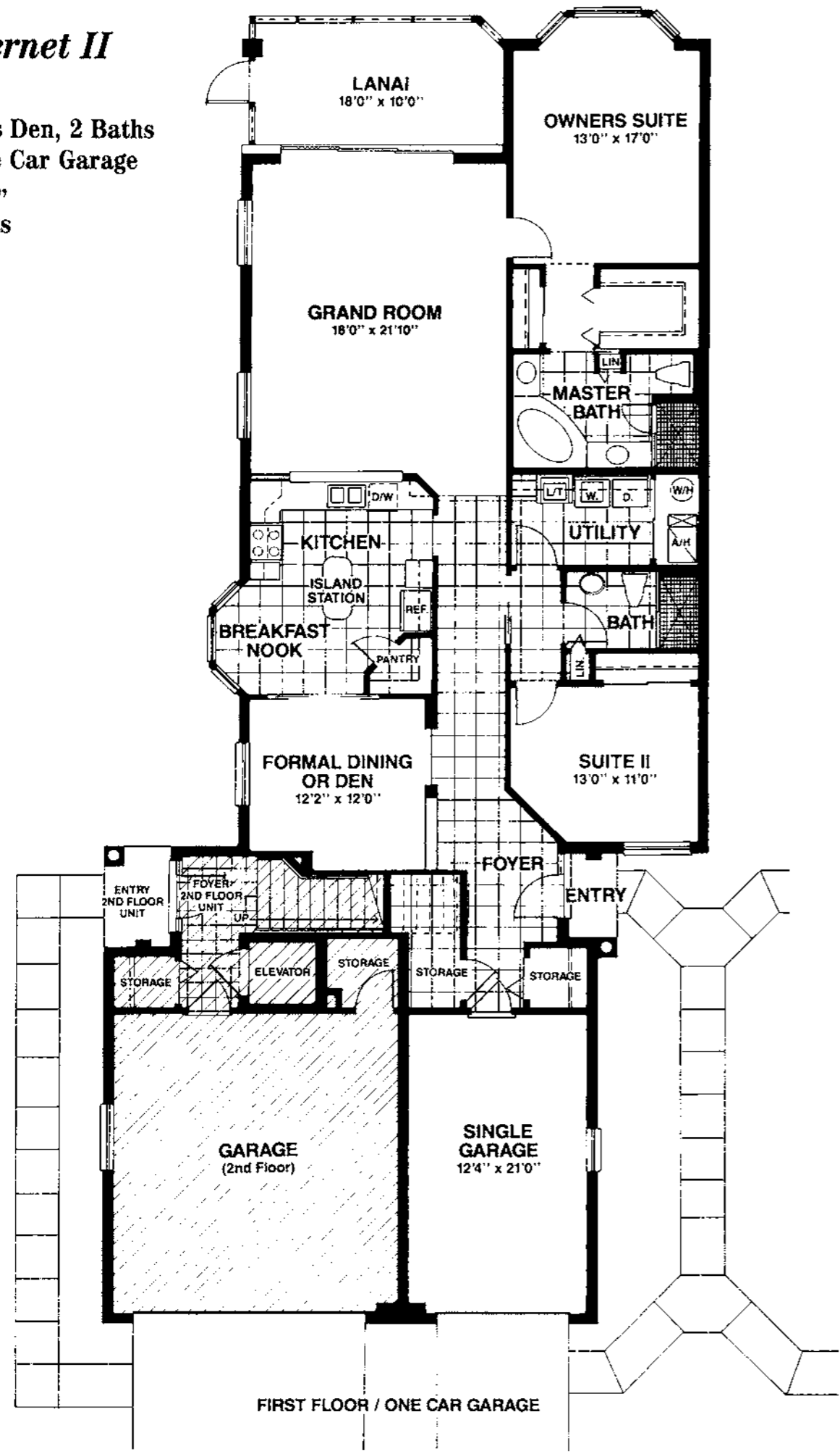
Two Car Garage 435 Sq. Ft.

TOTAL 2,399 Sq. Ft.

The Cabernet II

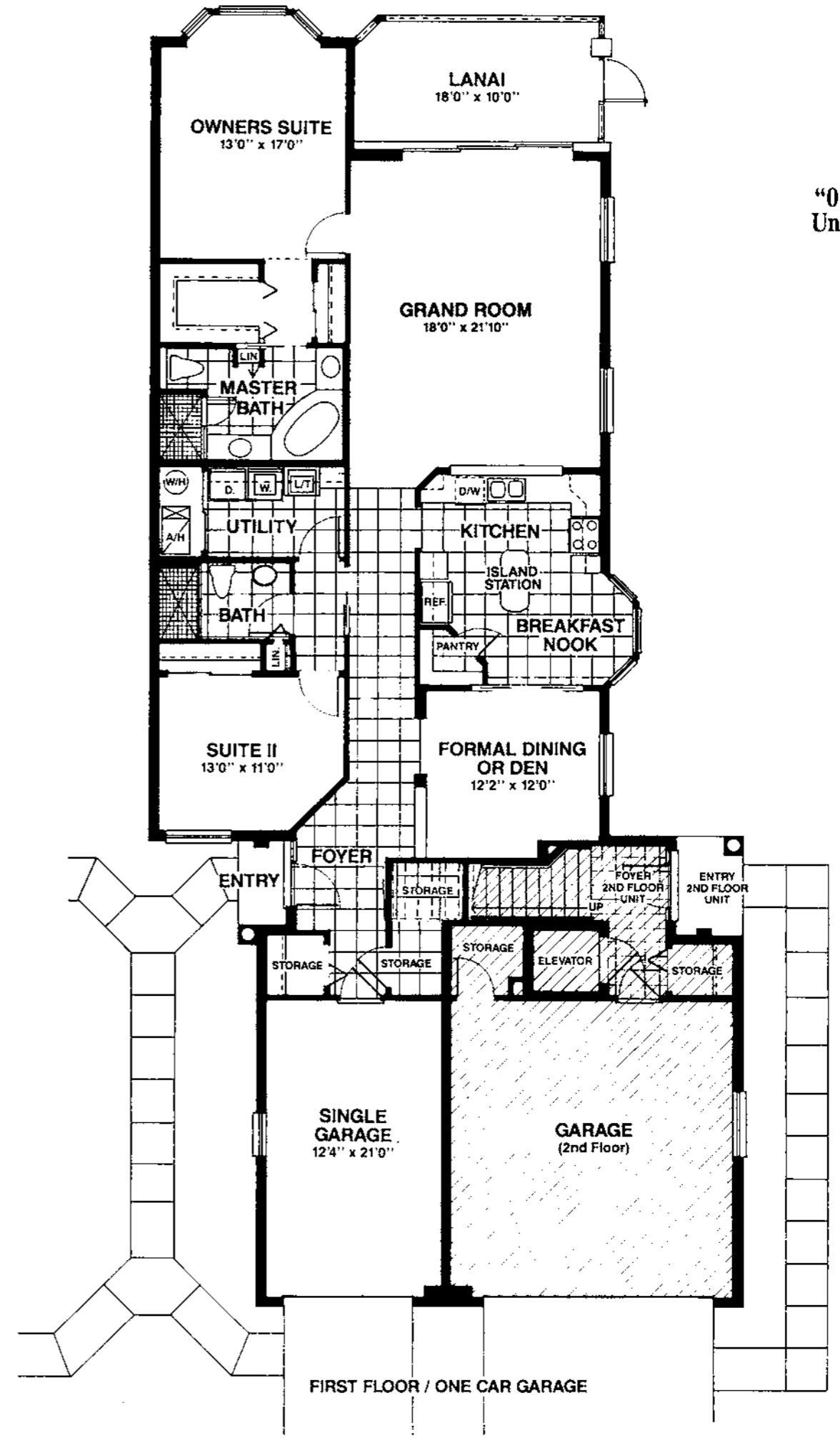
Bedrooms, plus Den, 2 Baths
Attached Single Car Garage

"01"
Units



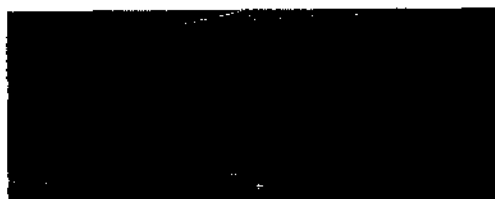
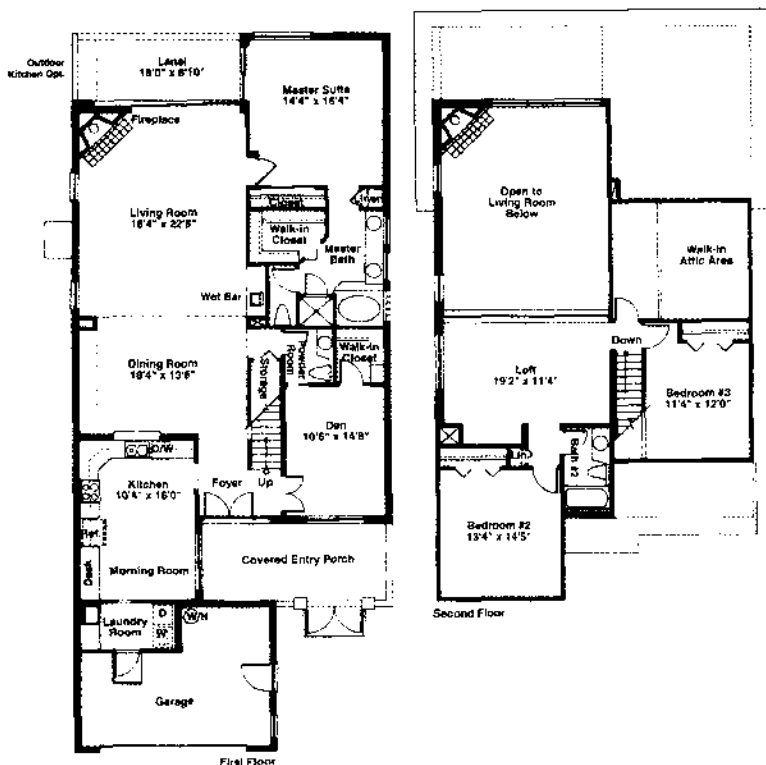
FIRST FLOOR / ONE CAR GARAGE

"02"
Units



FIRST FLOOR / ONE CAR GARAGE

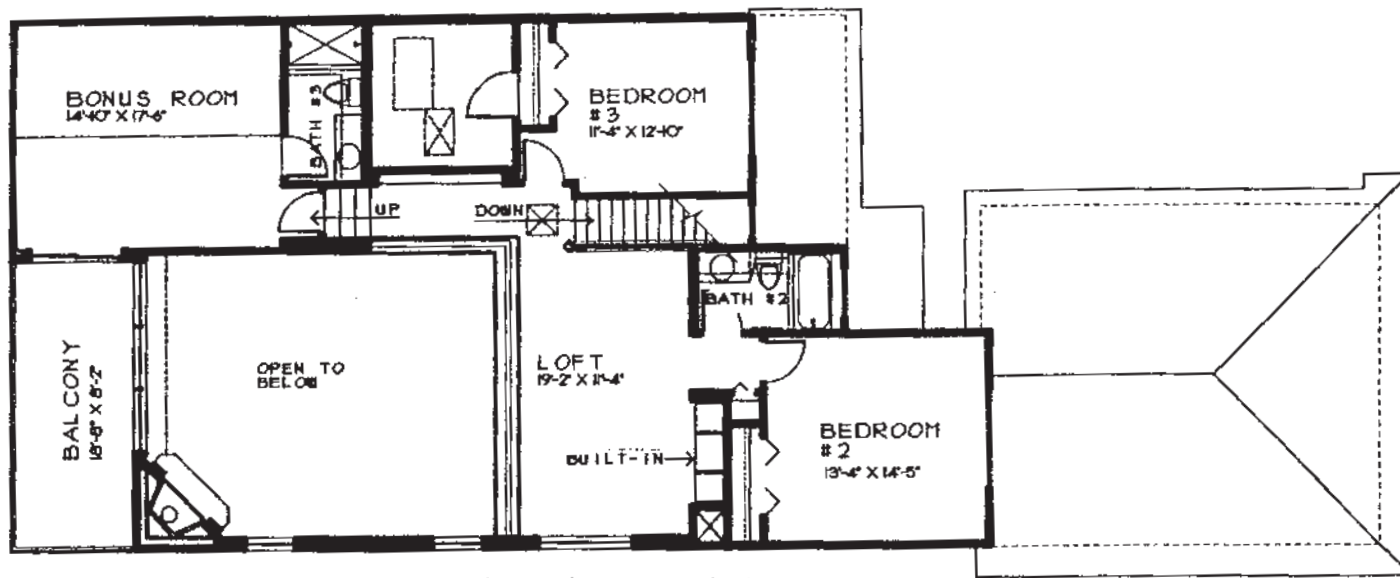
The Aberdeen



The Aberdeen at The Links at The Strand is a luxury 2-story home featuring 3 bedrooms, 2.5 baths, den, loft overlooking the living area and 2-car garage. Volume ceilings and 8-foot sliders create a spacious feel to this open floorplan. The kitchen is finished with custom-designed wood cabinetry and Corian countertops. Other special features include a fireplace, built-in plant shelves and paver driveway and walkways. Ceramic tile is used liberally throughout the home.

ings and 8-foot sliders create a spacious feel to this open floorplan. The kitchen is finished with custom-designed wood cabinetry and Corian countertops. Other special features include a fireplace, built-in plant shelves and paver driveway and walkways. Ceramic tile is used liberally throughout the home.

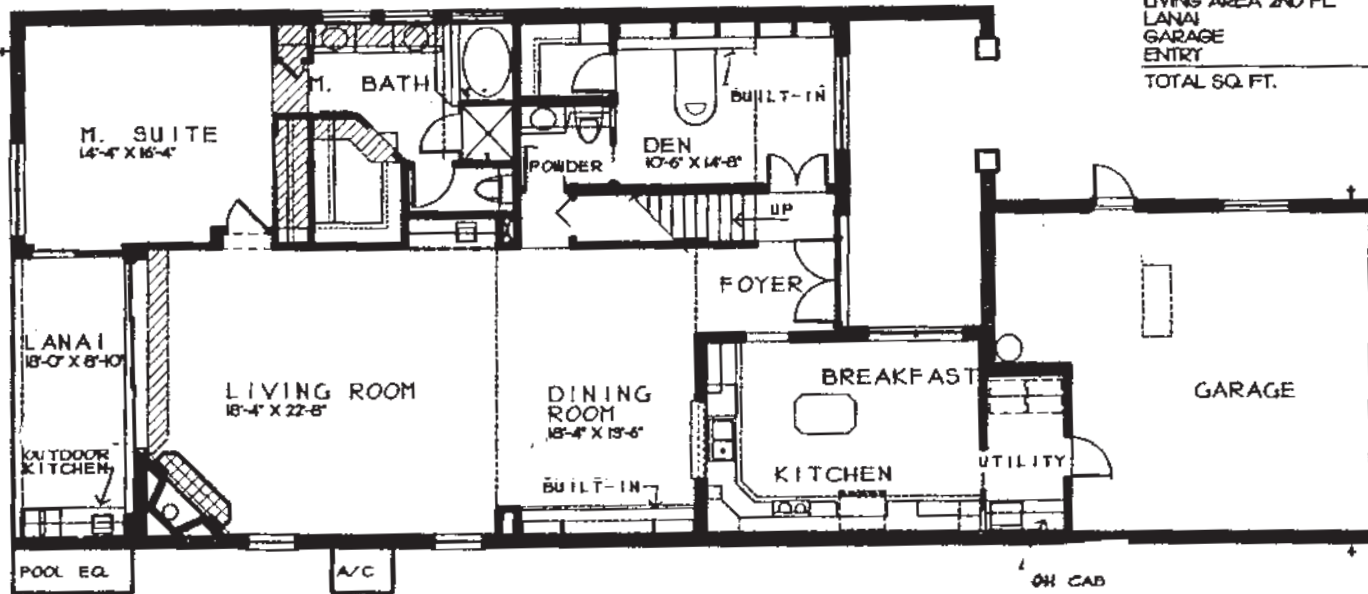
First Floor Living Area	1,942 Sq. Ft.
Second Floor Living Area	785 Sq. Ft.
Lanai	178 Sq. Ft.
Garage	513 Sq. Ft.
Covered Entry	48 Sq. Ft.
TOTAL	3,466 Sq. Ft.



SECOND FLOOR PLAN

AREA TOTALS

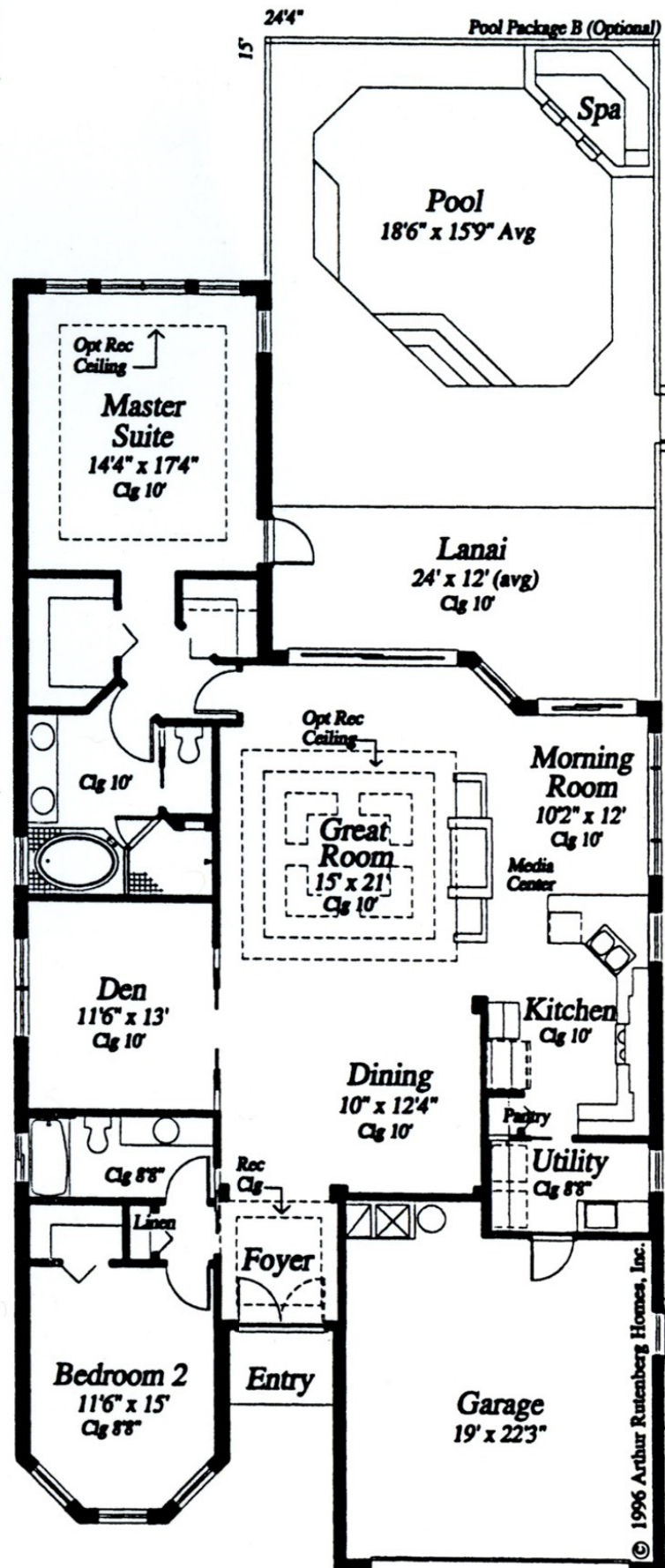
LIVING AREA 1ST FL.	1942
LIVING AREA 2ND FL.	129
LANAI	178
GARAGE	513
ENTRY	48
TOTAL SQ. FT.	3972



FIRST FLOOR PLAN

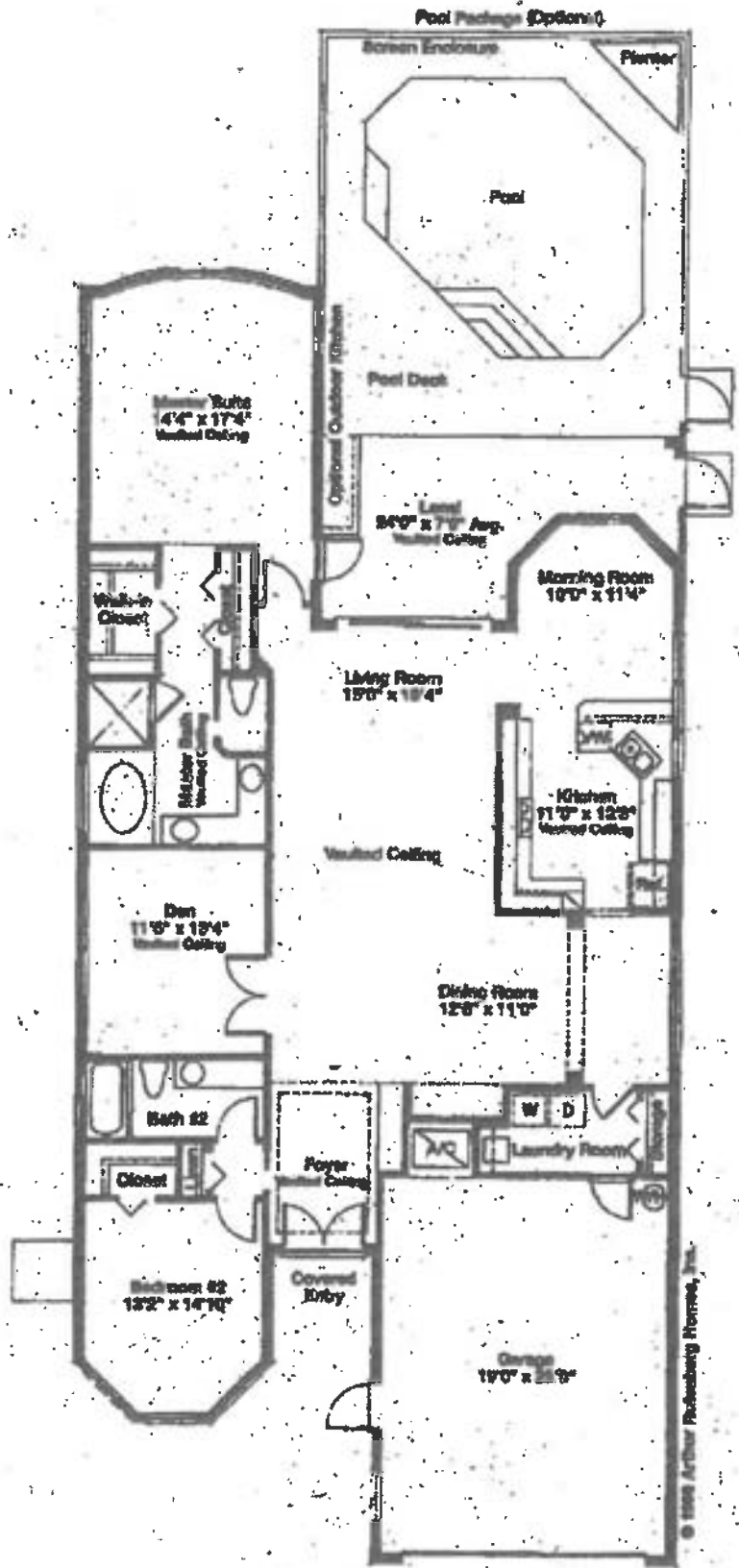
ABERDEEN WITH BONUS ROOM AND BALCONY

The Montreux III



The Montreaux

Two Bedrooms, Den, Two Baths, Two-Car Garage



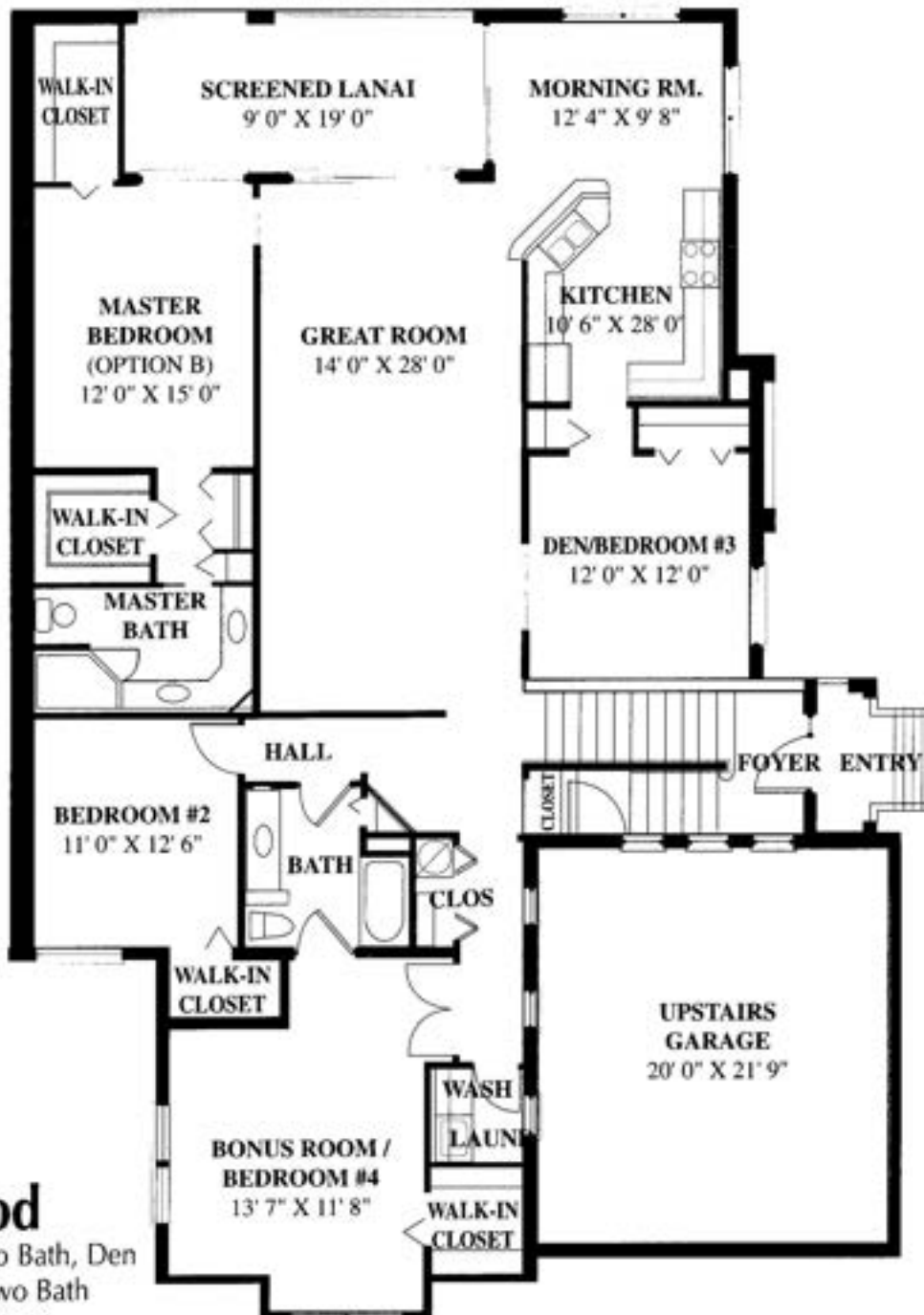
First Floor living Area	2,101 sq. ft.
Lanai	217 sq. ft.
Garage	479 sq. ft.
Covered Entry	26 sq. ft.
Total	2,823 sq. ft.

All dimensions and specifications are approximate and are subject to change without notice.

© 1988 Arthur Rutenberg Homes, Inc.

Clubside

AT PELICAN STRAND



Tanglewood

Three Bedroom, Two Bath, Den
or Four Bedroom, Two Bath

Second Floor Residence

Bonus Room Over Garage

Air Conditioned Living Area 2136 sq. ft.

Lanai 198 sq. ft.

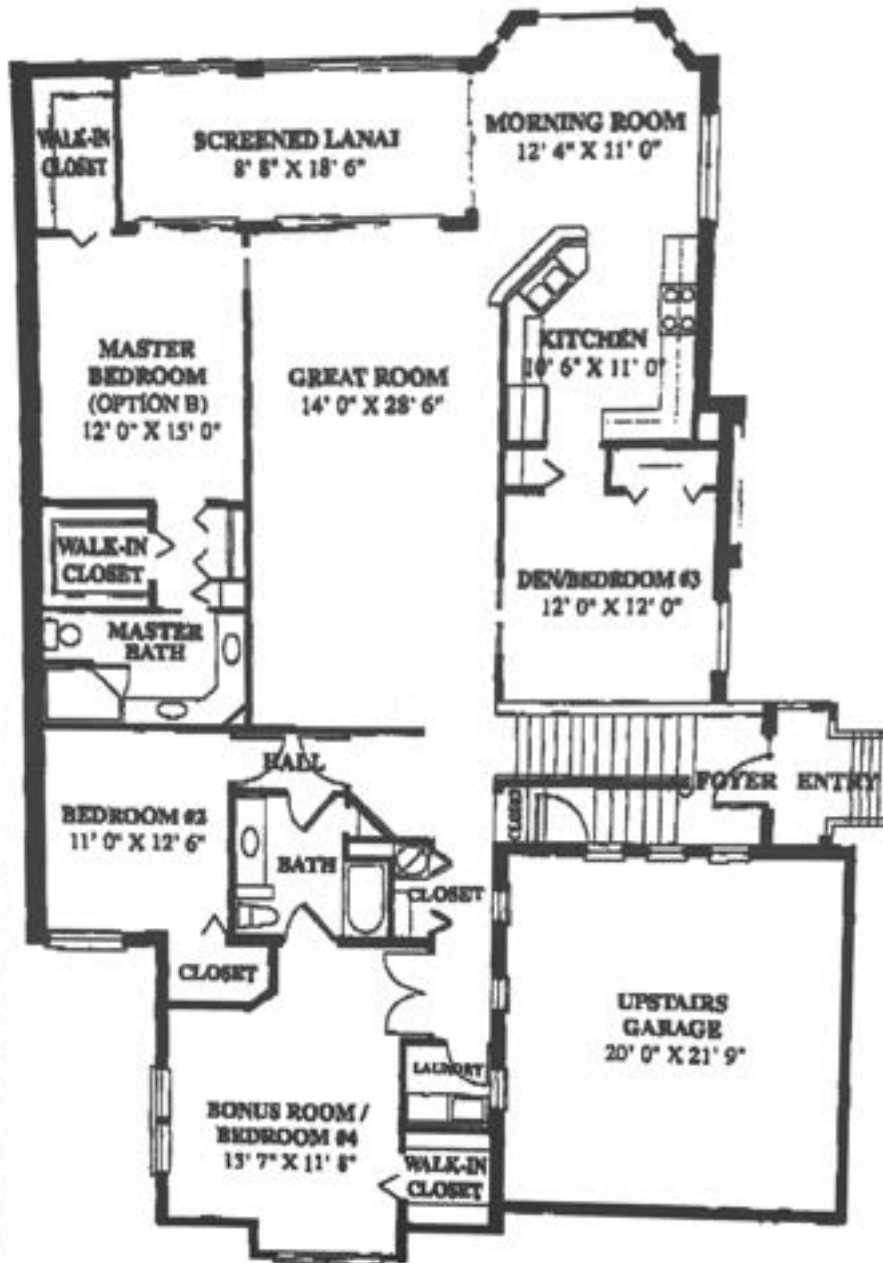
Two Car Garage 438 sq. ft.

TOTAL AREA 2772 sq. ft.

© 1998, The Jack Parker Corporation

All dimensions are approximate. Actual dimensions may vary. Oral representation cannot be relied upon as correctly stating the representations of the Developer. For correct representations, make reference to the document required by Section 718.303, Florida Statutes, to be furnished by a Developer to a Buyer or Lessee.

The Stratford II



The Stratford II model in The Pinnacle neighborhood at The Strand is a 3-bedroom coach home with a bonus room which can be utilized as a fourth bedroom, office, media room or playroom. It has 2,150 square feet of air-conditioned living area plus the lanai and 2-car attached garage for a total of 2,786 square feet. All of the homes at The Pinnacle feature private guest suites, a master suite with separate access to the lanai, brick paver driveways and walkways, and tile roofs. A neighborhood clubhouse with swimming pool is available exclusively to The Pinnacle residents.

A/C Living Area	2,150 Sq. Ft.
Lanai	198 Sq. Ft.
Garage	438 Sq. Ft.
TOTAL	2,786 Sq. Ft.

The Pinehurst



The Pinehurst, an award-winning luxury coach home by Bateman Communities, is the only way to live in style in Naples. The Pinehurst is

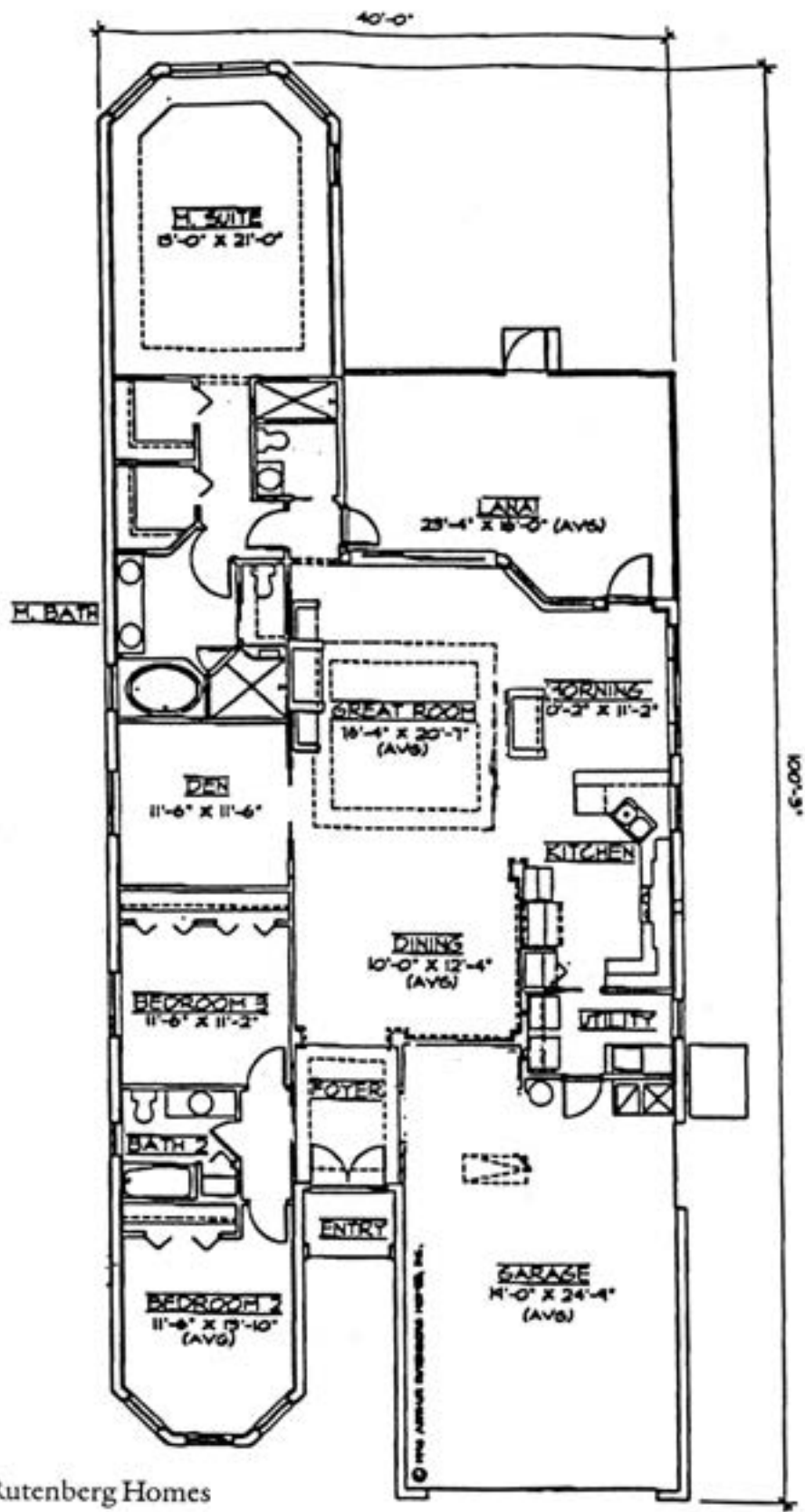
available in three floor plans, each featuring many luxury standards, with the size, qualities and comforts of a single-family home lifestyle. Year after year, these designs have swept prestigious industry awards. The Pinehurst in Turnberry Woods at The Strand offers spectacular golf course and preserve views. Starting in the \$240s.


A/C Living Area	2,160 Sq. Ft.
Lanai	173 Sq. Ft.
Loggia	47 Sq. Ft.
Garage	426 Sq. Ft.
TOTAL	2,806 Sq. Ft.

The Augusta II



First Floor Living Area	2,286 sq. ft.
Lanai	202 sq. ft.
Garage	563 sq. ft.
Covered Entry	33 sq. ft.
<hr/>	
Total	3,084 sq. ft.



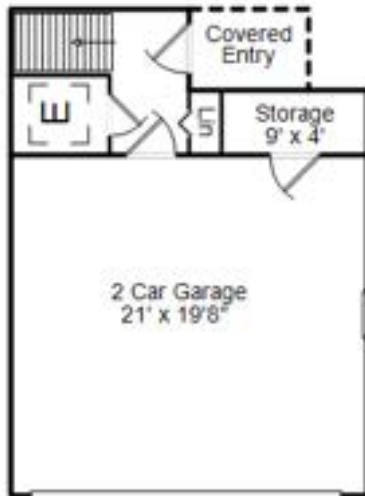
Arthur  Rutenberg Homes

LIVING	2406 S.F.
LANAI	335 S.F.
GARAGE	555 S.F.
ENTRY	50 S.F.
TOTAL AREA	5326 S.F.

Main Level

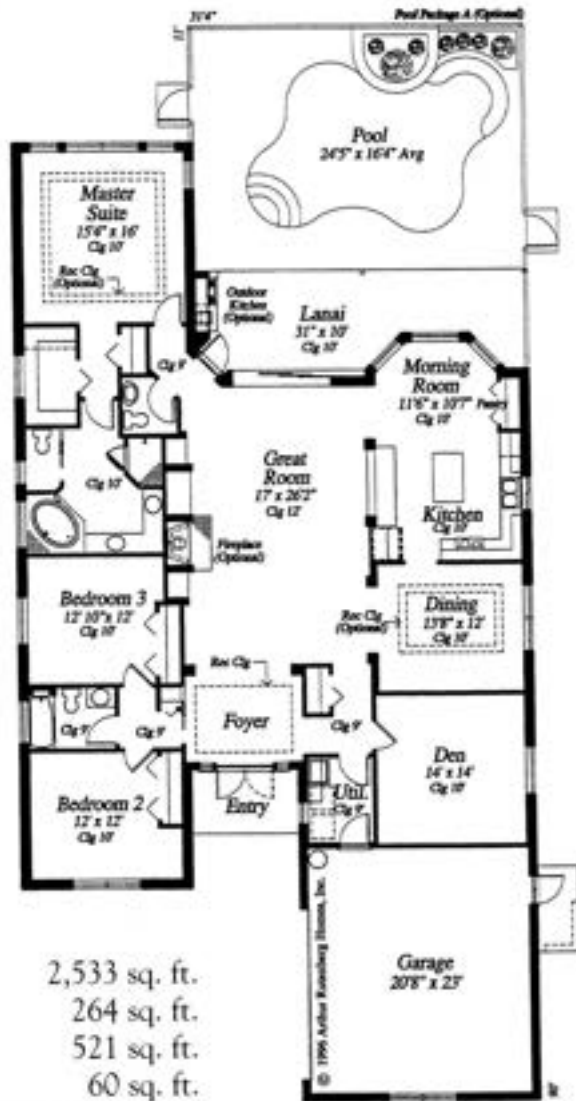


Lower Level

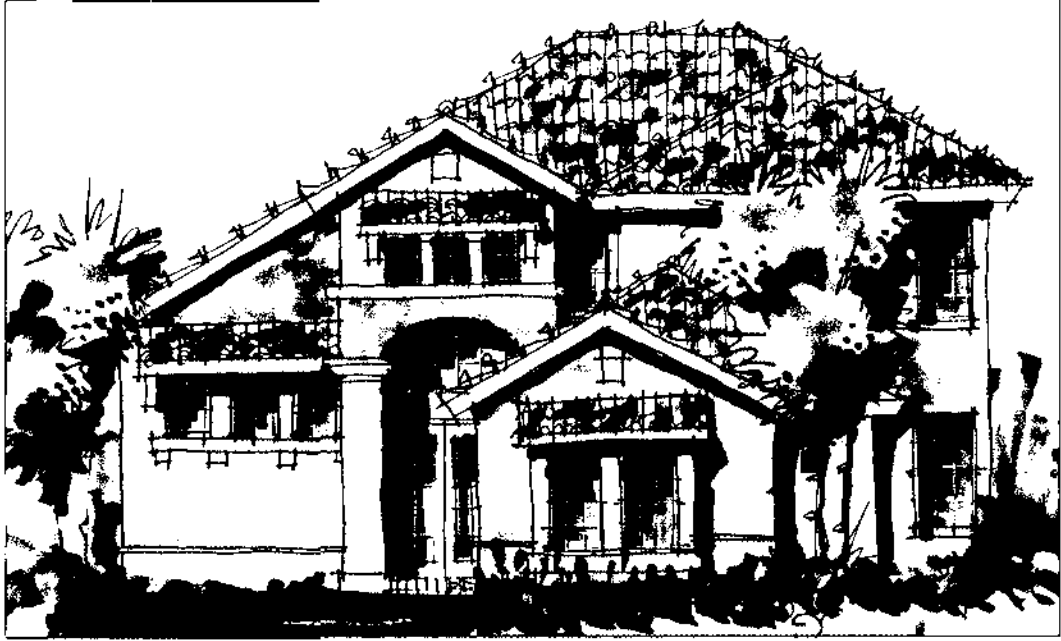


Area:	Sq. Ft.
Living Area	2,442
Garage	492
Screened Lanai	173
Covered Entry	35

The Bardmoor



Living Area	2,533 sq. ft.
Lanai	264 sq. ft.
Garage	521 sq. ft.
Entry	60 sq. ft.
<hr/> Total	<hr/> 3,378 sq. ft.

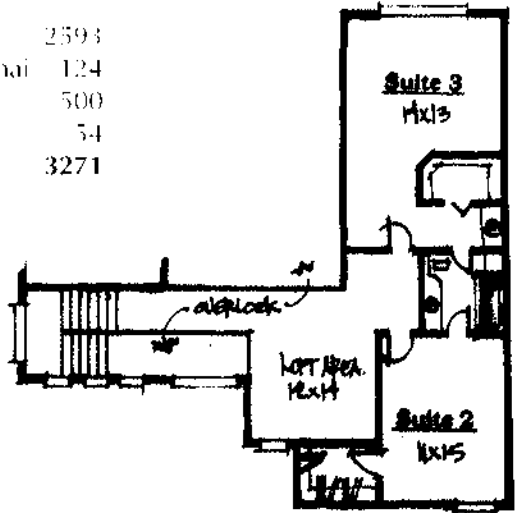
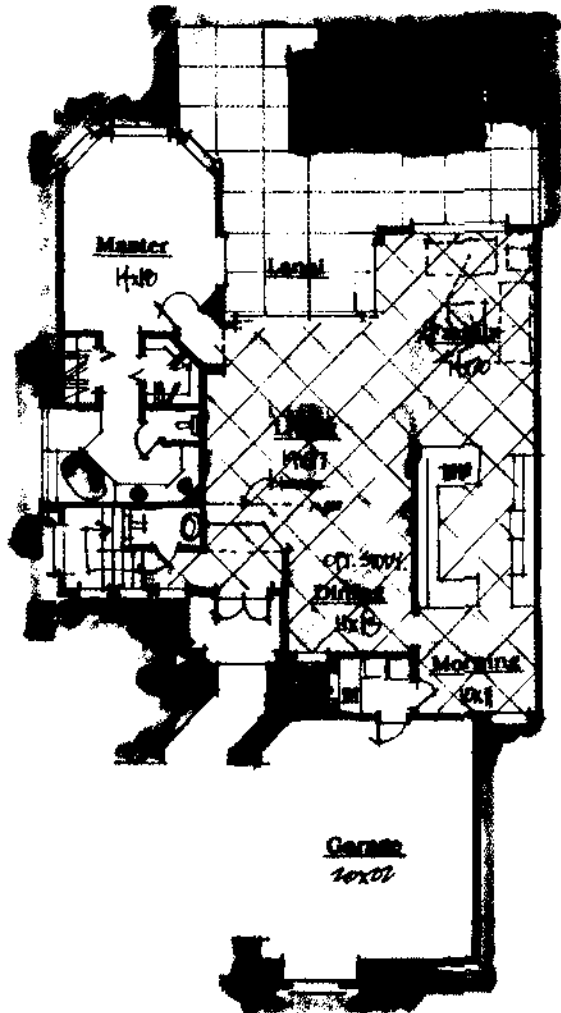


The Pearmain

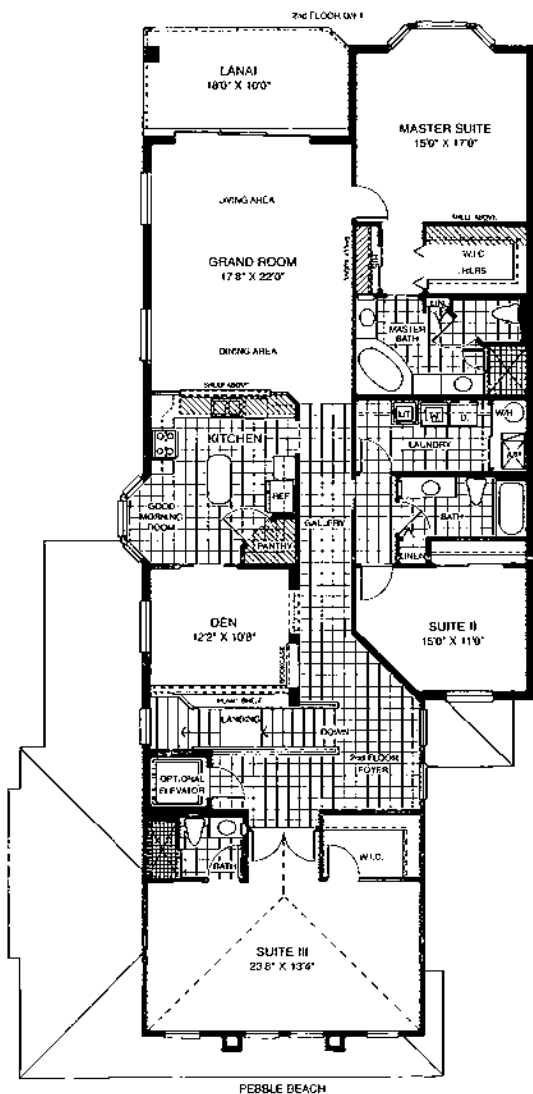
Extra space is the essence of this two story home. A large Master Suite features his and her closets. The expansive Living Room/Dining Area is made for entertaining. There's even a convenient Powder Room. The Family Room offers a more intimate evening gathering place, while the spacious Kitchen and Morning Room invite quiet moments over coffee. Upstairs, a Loft provides a cozy retreat for reading and offers captivating views to the Lanai and optional Pool, and it accesses the spacious two-bedroom Guest Suite. The two-car Garage is oversized for extra storage with easy entry into the Morning Room/Kitchen area.

Square Footage

Living Area	2593
Covered Lanai	124
Garage	500
Entry	54
TOTAL	3271



The Pebble Beach

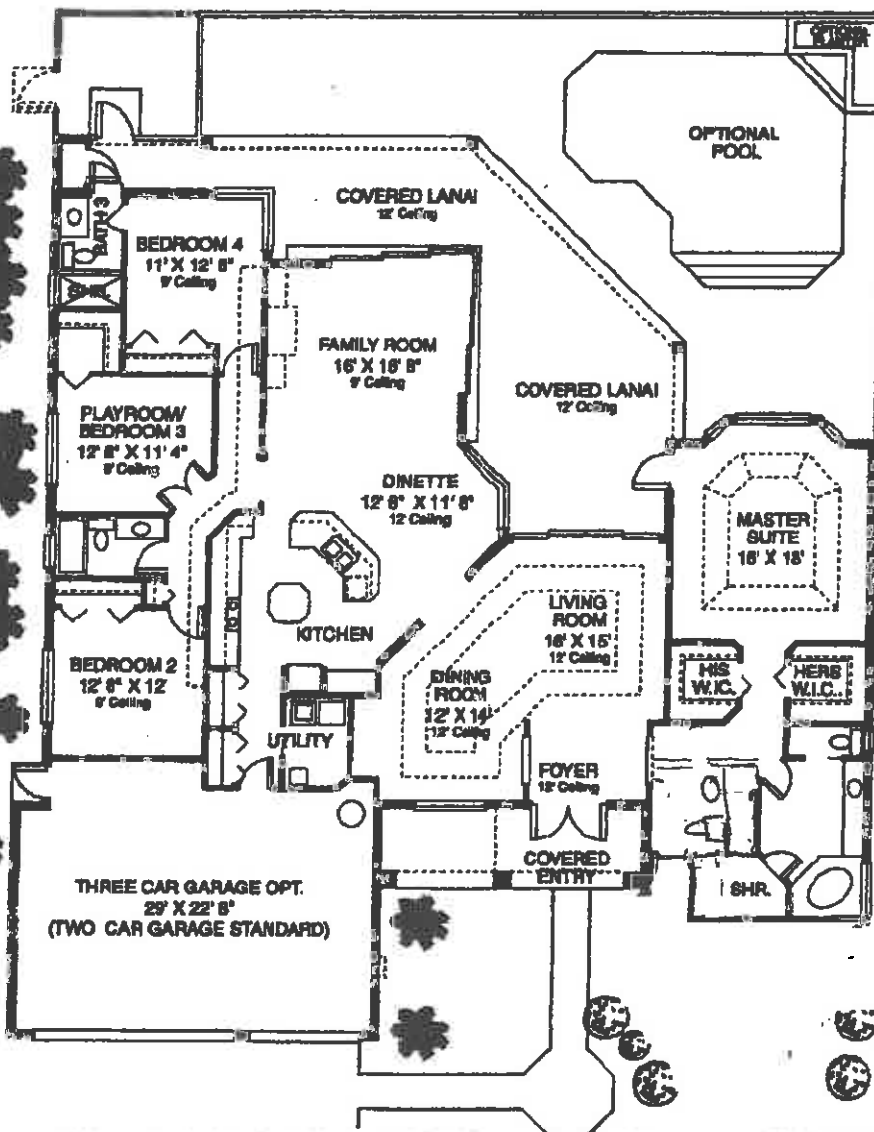


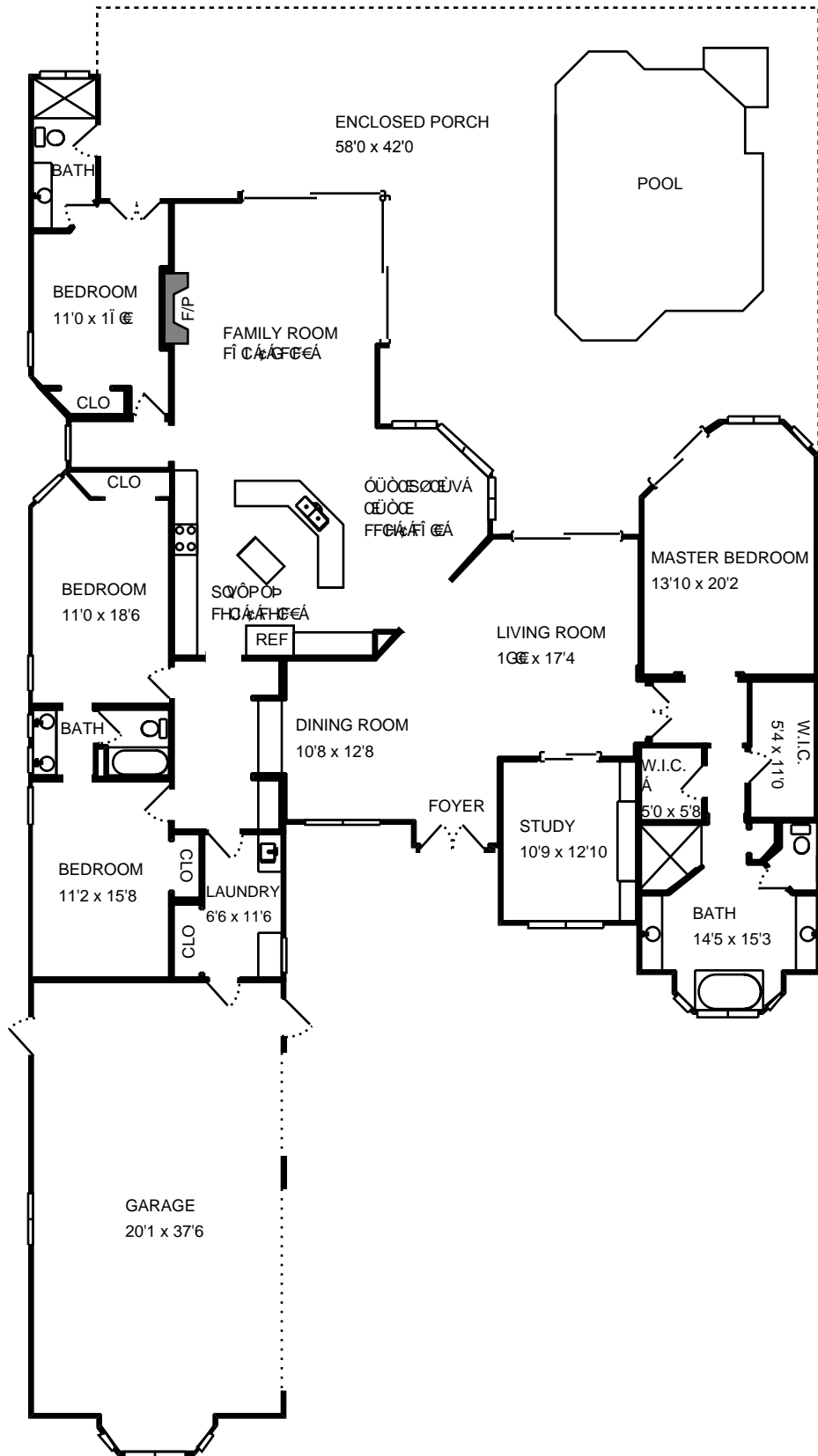
The Pebble Beach, on the second floor, at Trophy Club redefines coach home living with spacious floor plans offering 3 bedrooms and 3 baths with den, 2-car garage and optional private elevator. With 2,686 square feet of living area, The Pebble Beach provides three private suites, spacious grand room for entertaining, a gourmet kitchen with breakfast nook and many luxury features. It is one of three models available in Trophy Club at The Strand. Coach homes from the \$250s.

A/C Living Area	2,686 Sq. Ft.
Lanai	173 Sq. Ft.
Loggia	33 Sq. Ft.
Garage	463 Sq. Ft.
TOTAL	3,355 Sq. Ft.



The Marquesas



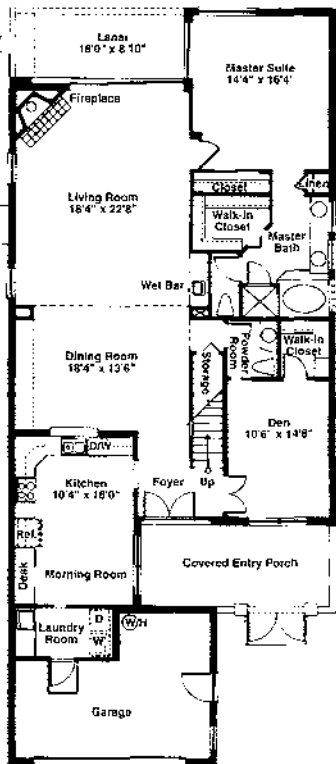




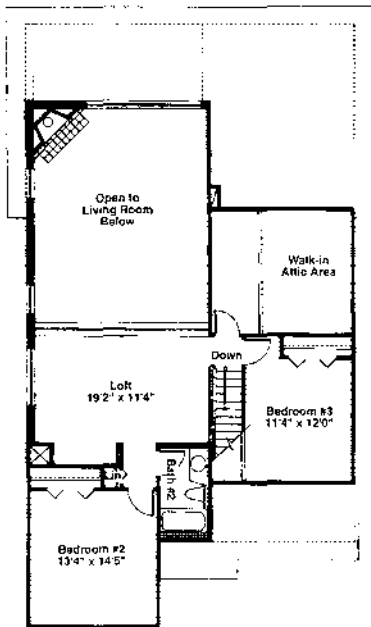
Arthur Rutenberg
Homes

The Aberdeen

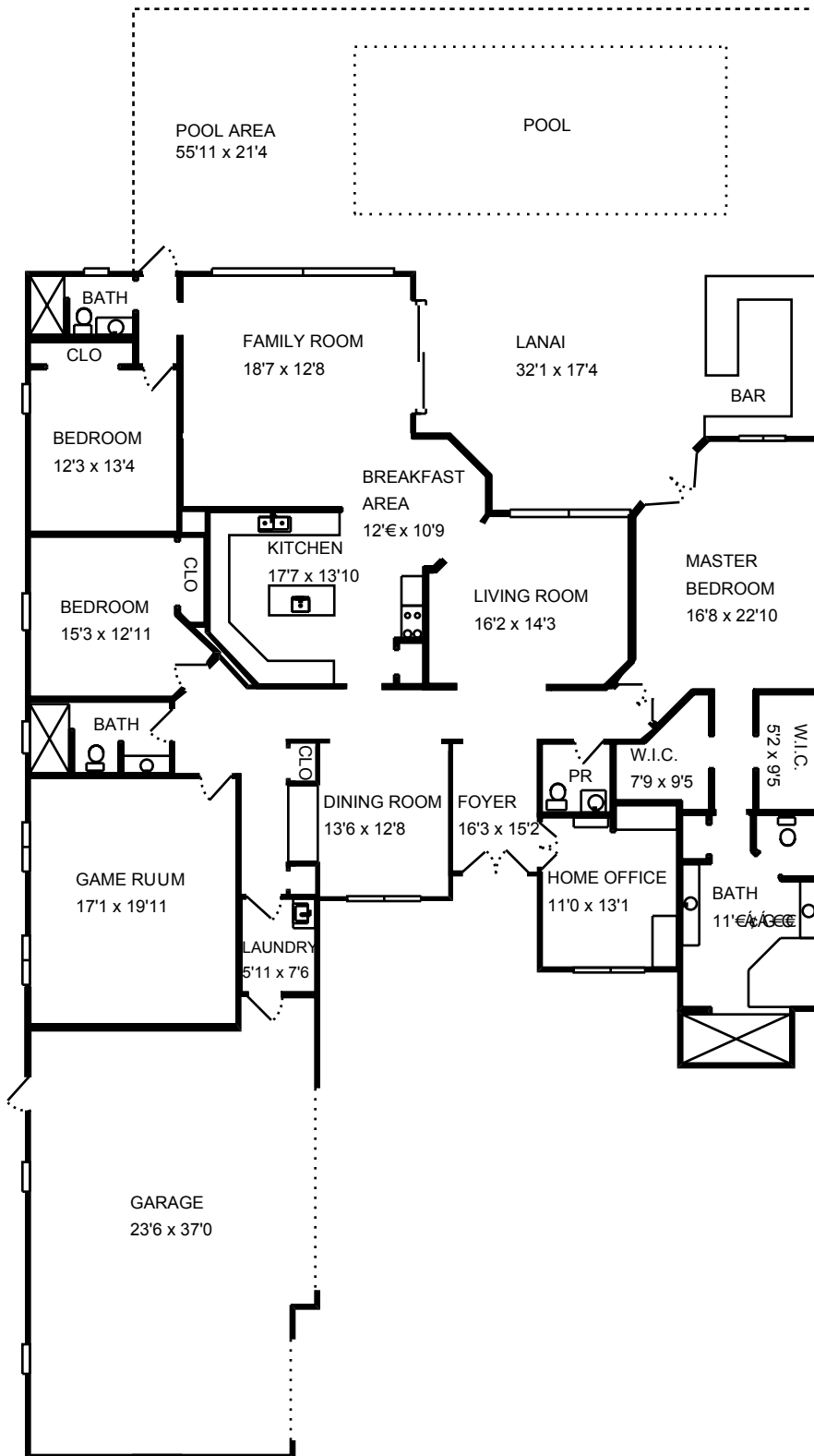
Outdoor
en Opt.



First Floor

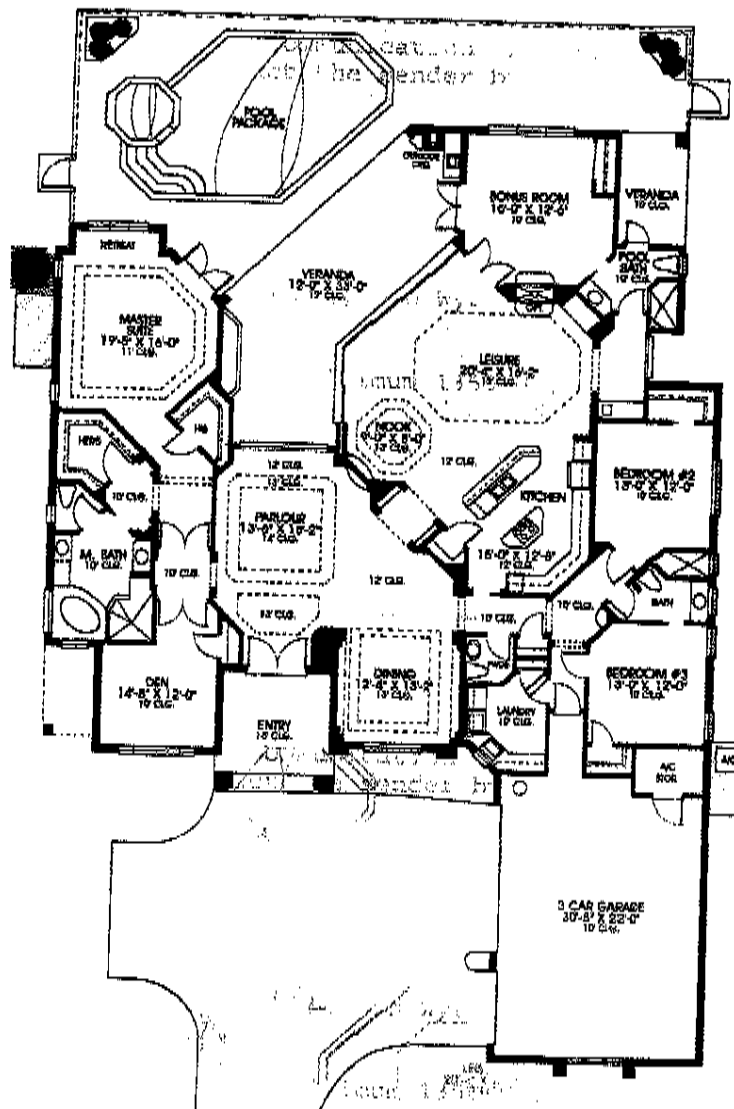


Second Floor



VISION BUILDERS

Vision II

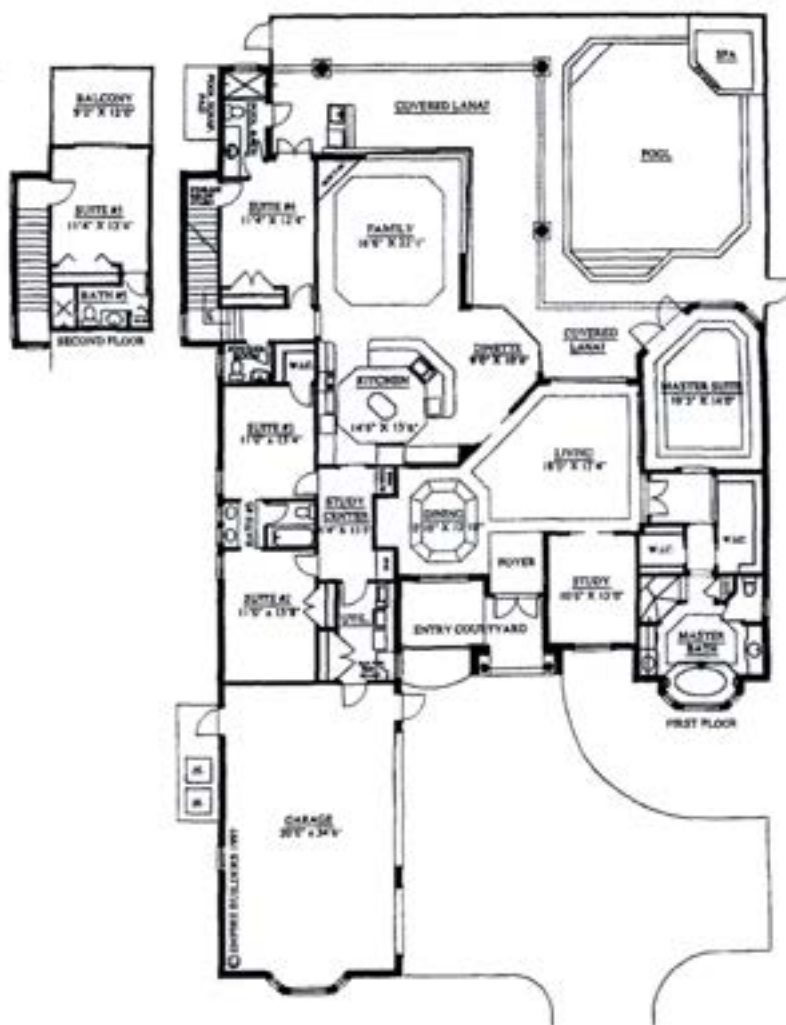


The Vision II by Vision Builders, Inc., is a 4,928 total square foot home with 4 bedrooms, 3.5 baths and 3-car garage. The kitchen

is finished with granite countertops and custom cabinetry with crown molding accents. The floorplan offers a formal parlor and dining room as well as a leisure room, study and enclosed veranda with pool, spa and rock waterfall. Zero-corner pocketing sliders in the leisure room and an air-conditioned storage area highlight the special amenities of this luxury home.

A/C Living Area	3,477 Sq. Ft.
Veranda	553 Sq. Ft.
Garage	750 Sq. Ft.
Entry	148 Sq. Ft.
TOTAL	4,928 Sq. Ft.

The Corinthian II

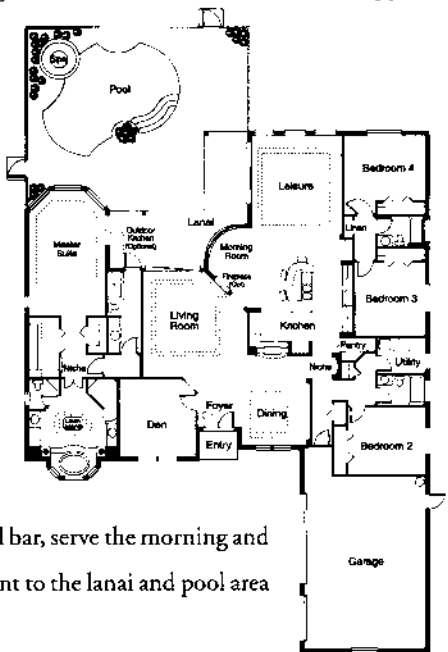


The Corinthian II is a 2-story, 5,167 total square-foot home with 5 bedrooms, 4.5 baths, plus study, family room and 3-car garage. The tiled family room opens to the

lanai, pool and spa with zero-edge pocket sliding glass doors. The gourmet kitchen is designed with custom-stained stepped cabinets, granite countertops, tumblestone backsplash and is equipped with KitchenAid® appliances.

A/C Living Area	3,500 Sq. Ft.
Lanai	618 Sq. Ft.
Garage	786 Sq. Ft.
Entry	155 Sq. Ft.
2nd-floor balcony	108 Sq. Ft.
TOTAL	5,167 Sq. Ft.

THE CALAIS is a four-bedroom, four-bath, three-car garage luxury home with den and a two-sided fireplace located between the living and morning rooms. An arched pass-through between the dining room and the kitchen features stepped cabinets with glass doors on both sides for added style. A wide hallway with two walk-in closets and an arched niche connects the master bedroom and bath. A multi-function island, with a curved bar, serve the morning and leisure rooms adjacent to the lanai and pool area beyond.



THE CALAIS

Lanai	293 Sq. Ft.
Living Area	3,404 Sq. Ft.
Garage	720 Sq. Ft.
Entry	34 Sq. Ft.
TOTAL	4,451 Sq. Ft.

