

## Floor Plans

These floor plans have been assembled as a resource for you. They may not be inclusive of every home in the community.

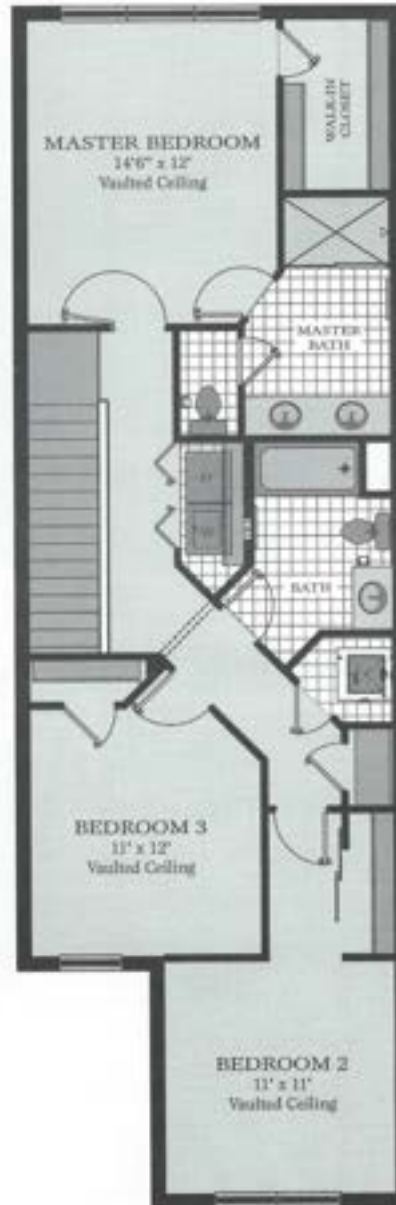
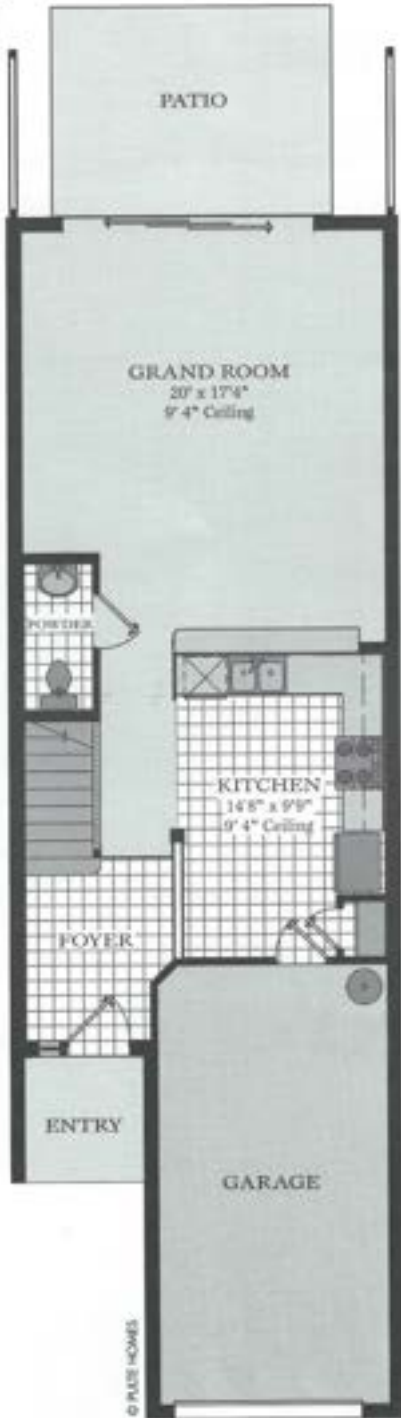
Please note that over time, owners may make modifications to spaces that may not be captured in these original floor plans.

Renderings are not a guarantee of space measurement. Interested parties should verify through their own secured services.

# THE MILAN

3 Bedrooms, 2½ Bathrooms and 1 Car Garage

Living Area	1,580 sq. ft.
Patio	133 sq. ft.
Entry	38 sq. ft.
Garage	255 sq. ft.
<b>Total</b>	<b>2,004 sq. ft.</b>



© PULTE HOMES

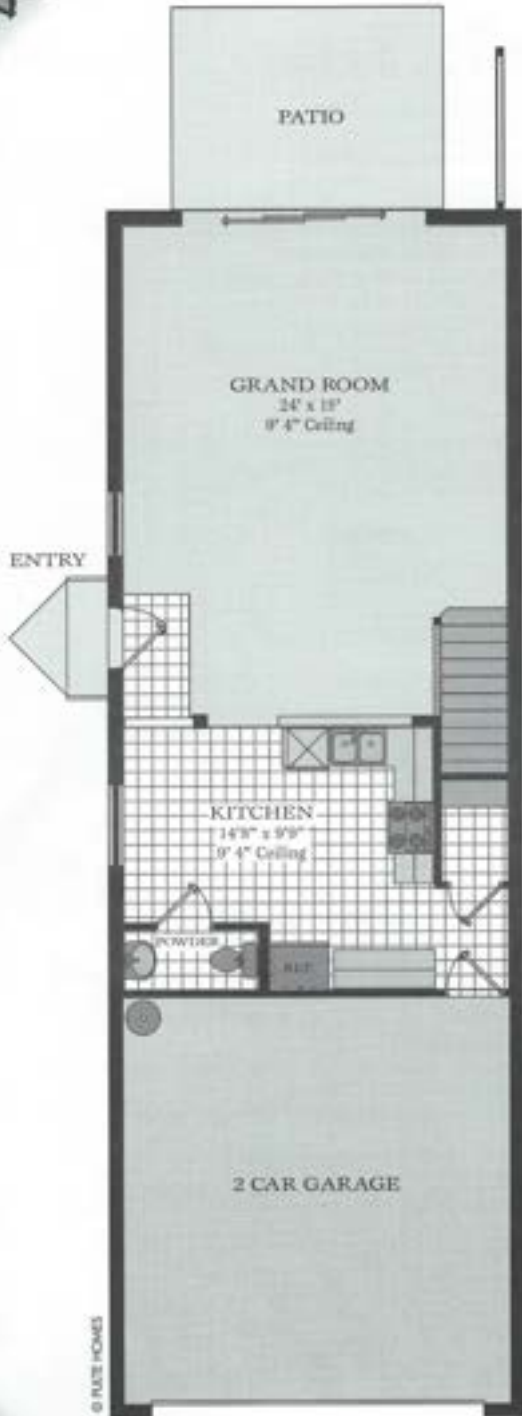


Artist's renderings are conceptual only. Exact dimensions and spatial arrangements on this plan are approximate and may vary in final construction.

# THE MONTENERO

3 Bedrooms, 2 1/2 Bathrooms and 2 Car Garage

Living Area	1,715 sq. ft.
Patio	133 sq. ft.
Entry	12 sq. ft.
Garage	380 sq. ft.
<b>Total</b>	<b>2,240 sq. ft.</b>



© PULTE HOMES



Artist's renderings are conceptual only. Exact dimensions and spatial arrangements on this plan are approximate and may vary in final construction.