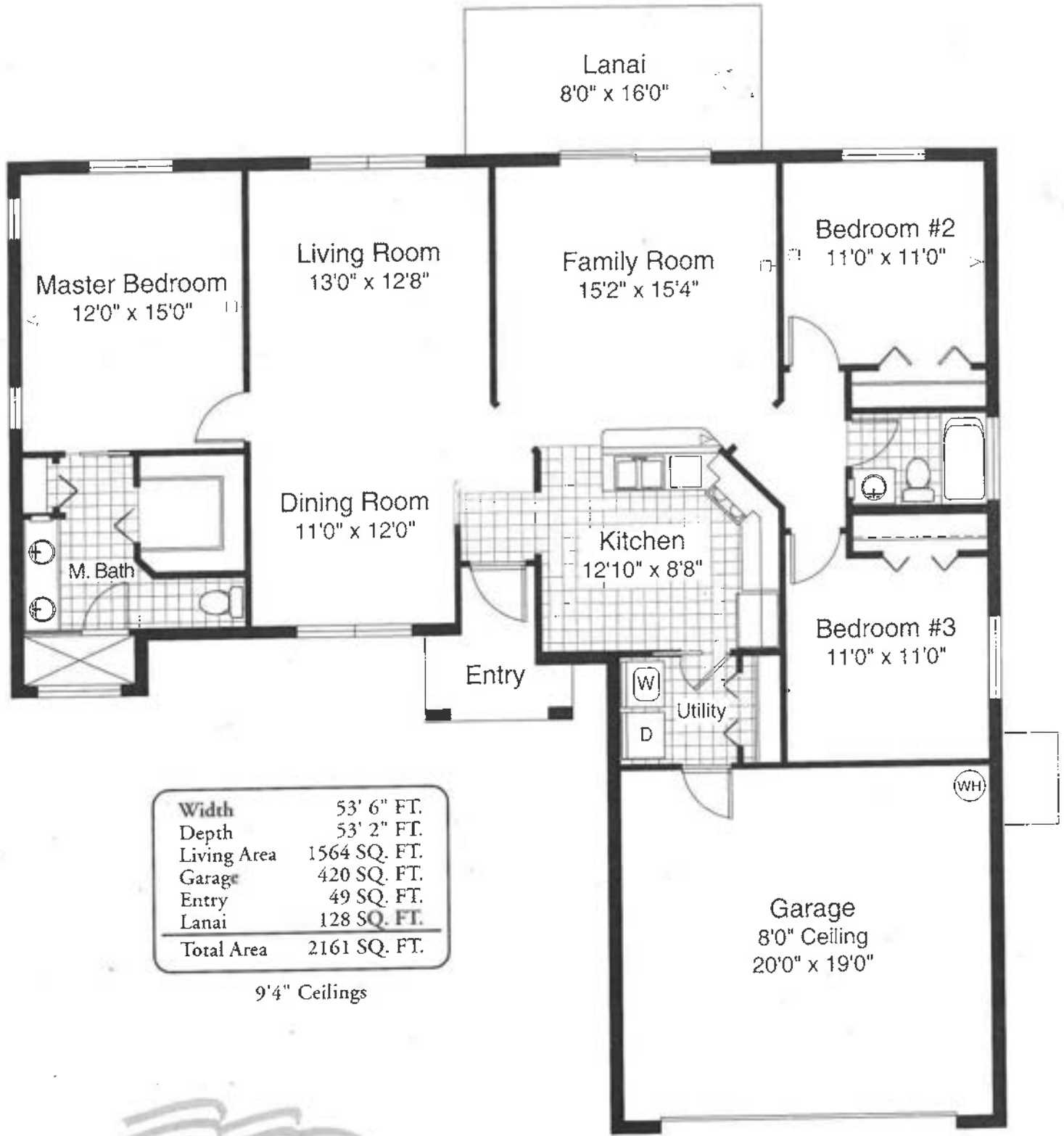


The Lexington II



Width	53' 6" FT.
Depth	53' 2" FT.
Living Area	1564 SQ. FT.
Garage	420 SQ. FT.
Entry	49 SQ. FT.
Lanai	128 SQ. FT.
Total Area	2161 SQ. FT.

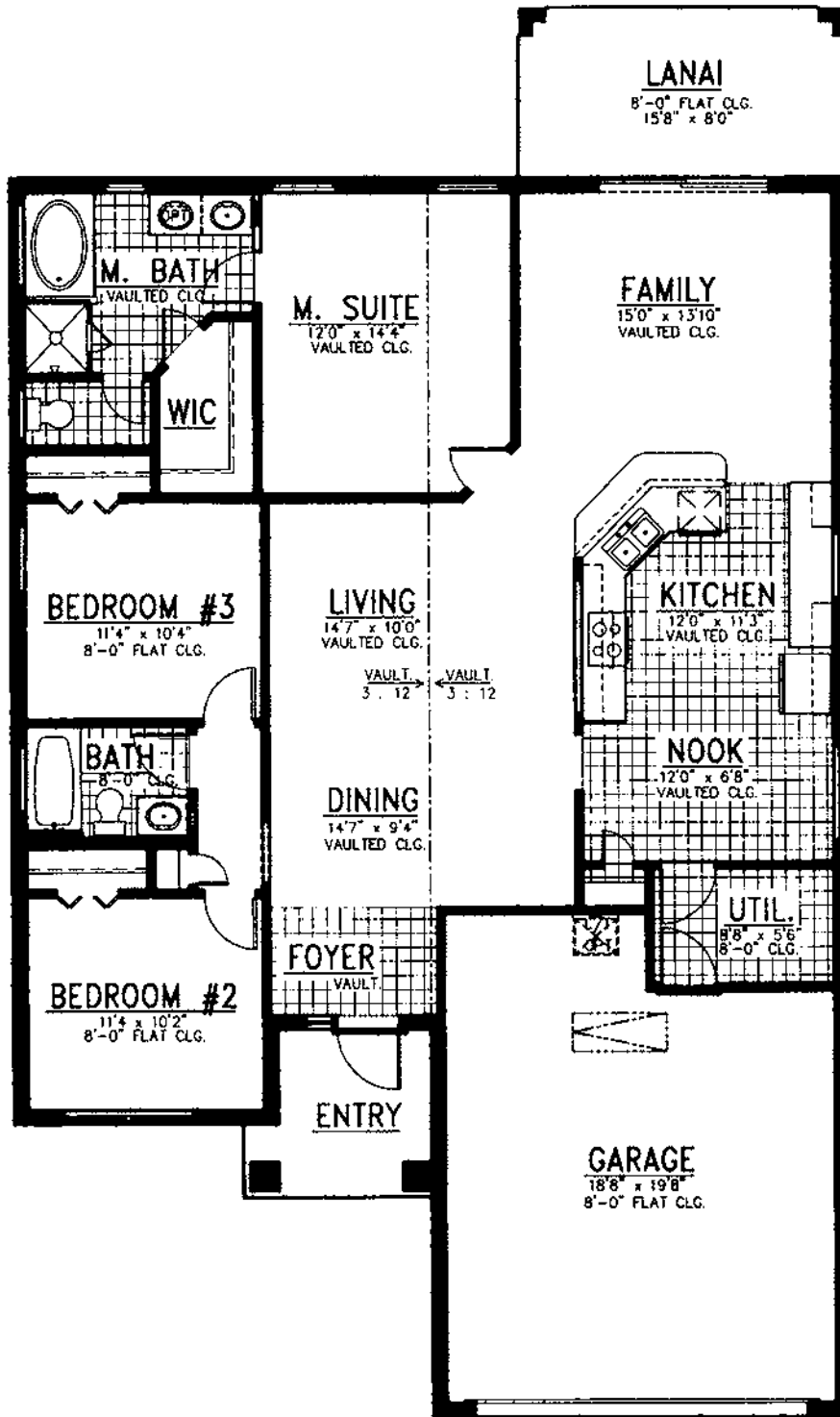
9'4" Ceilings



Oral representations cannot be relied upon as correctly stating representations of the developer. For correct representations reference should be made to this brochure and to the documents furnished by the developer. All plans are artist renderings and all dimensions are approximate and may vary with actual construction. Floor plans, window sizes and room sizes may vary based on the elevation selected. Landscaping on the rendering is shown only for display. Colonial Homes reserves the right to modify all plans and specifications without notice or obligation.



Seneca
1605



FLOOR PLAN

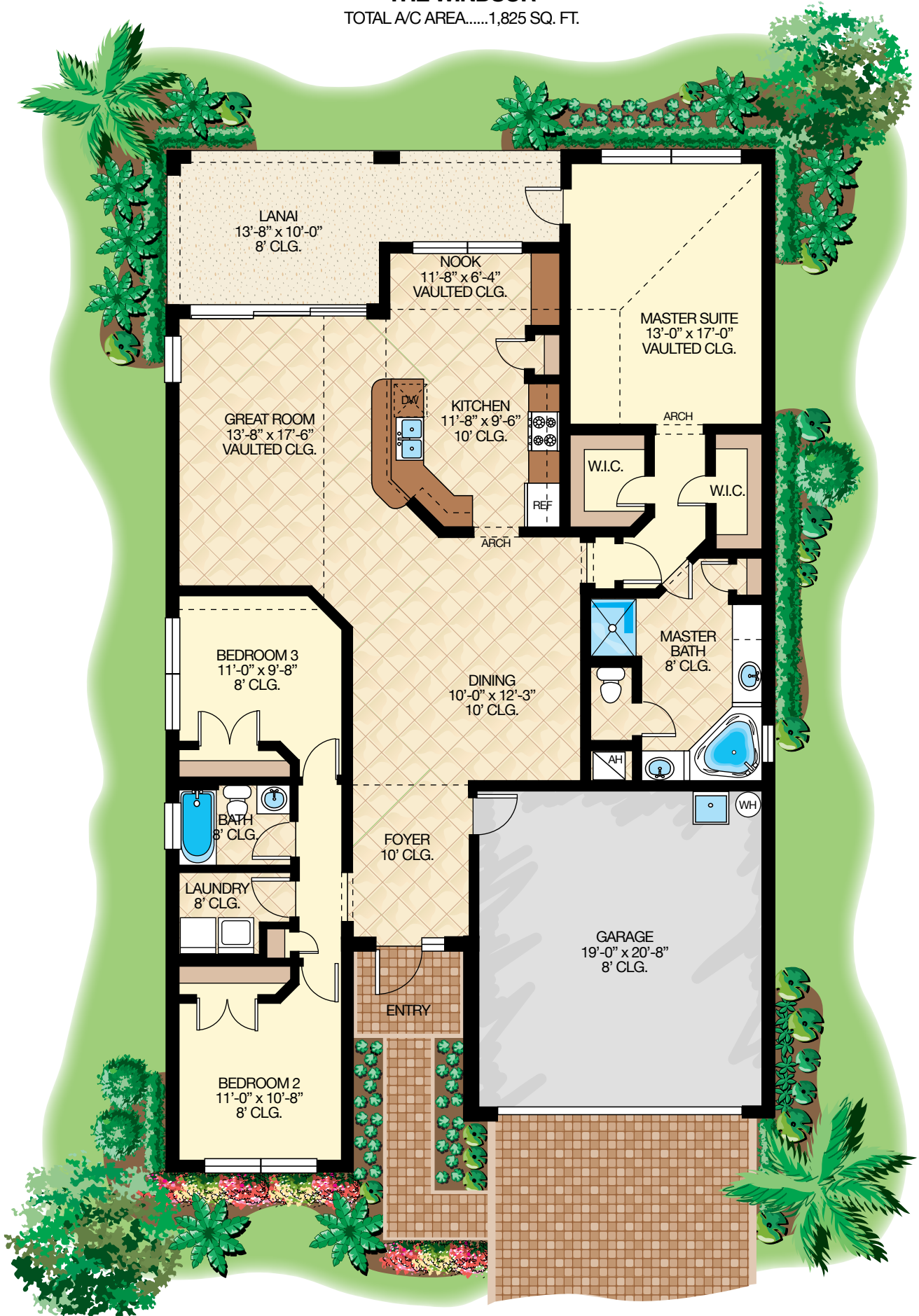
TEMPORARY BROCHURE ONLY. MAY NOT REFLECT ACTUAL CHARACTERISTICS OF FINISHED HOME. FLOOR PLANS ARE SHOWN ONLY FOR DISPLAY PURPOSES. WINDOW SIZES AND LOCATIONS, ROOM SIZES, AND DIMENSIONS ARE APPROXIMATE AND MAY VARY. PRICES AND FEATURES SUBJECT TO CHANGE WITHOUT NOTICE. PLEASE CONSULT SALES COUNSEL OR FOR DESIGN UPDATES. CGC 048681

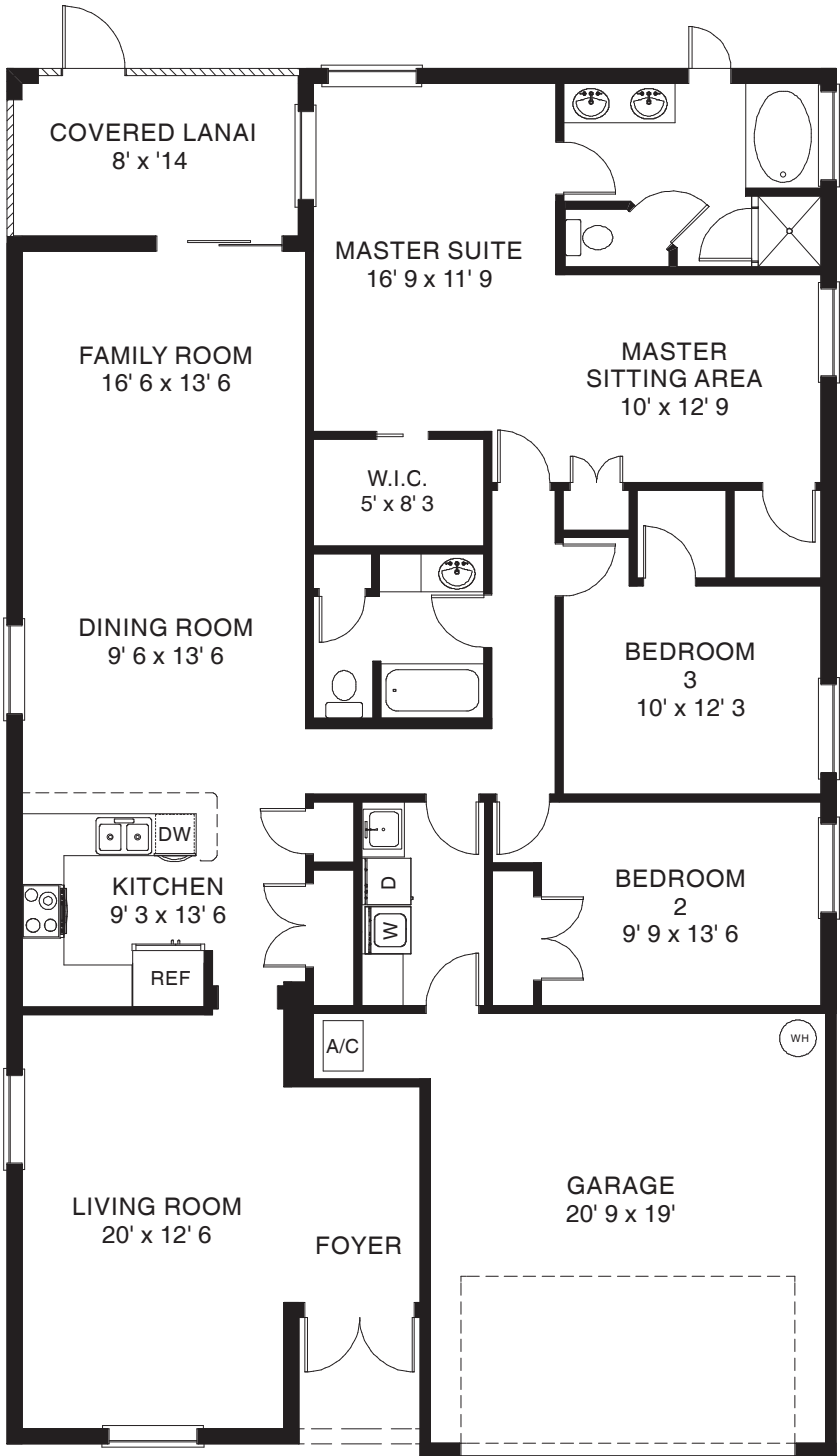


1st Floor Area	1606 S.F.
2nd Floor Area	N/A
Total Living Area	1606 S.F.
Garage	441 S.F.
Opt. Lanai	127 S.F.
Entry	65 S.F.
Total Sq. Ft.	2239 S.F.

Date
12-1-00

THE WINDSOR
TOTAL A/C AREA.....1,825 SQ. FT.

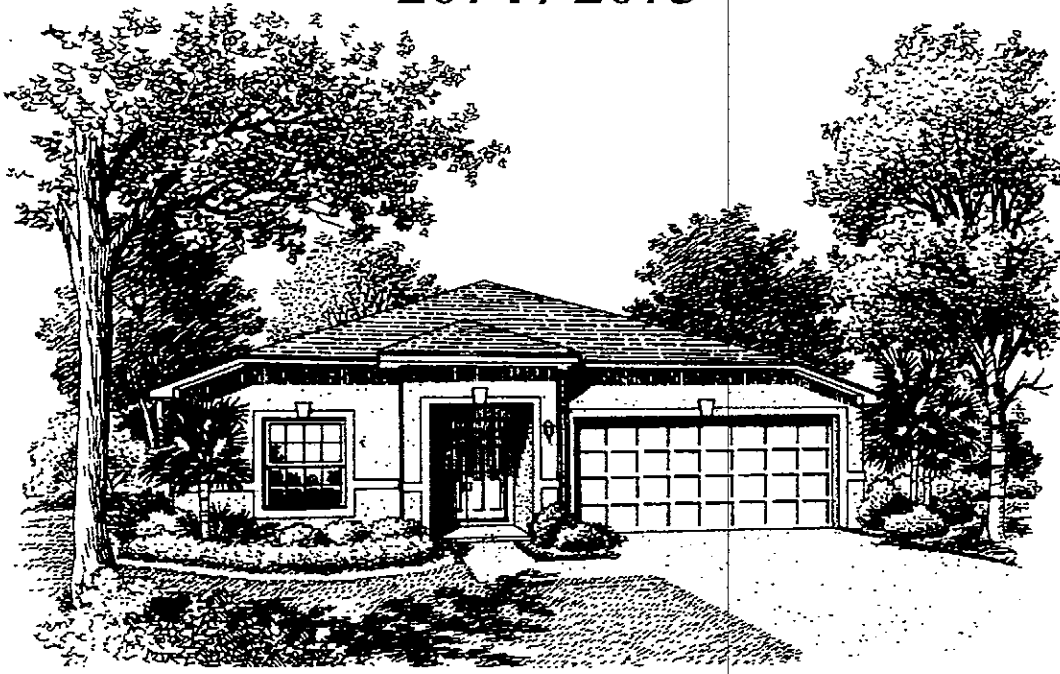




3 Bedroom plus Den, 2 Bath	
TOTAL UNDER AIR	2,057 sq. ft.
Garage	430 sq. ft.
Covered Entry	38 sq. ft.
Covered Lanai	112 sq. ft.
TOTAL AREA	2637 sq. ft.
<i>We believe this information to be reliable, it has been supplied by a third party and we do not represent or warrant that it is accurate or complete.</i>	

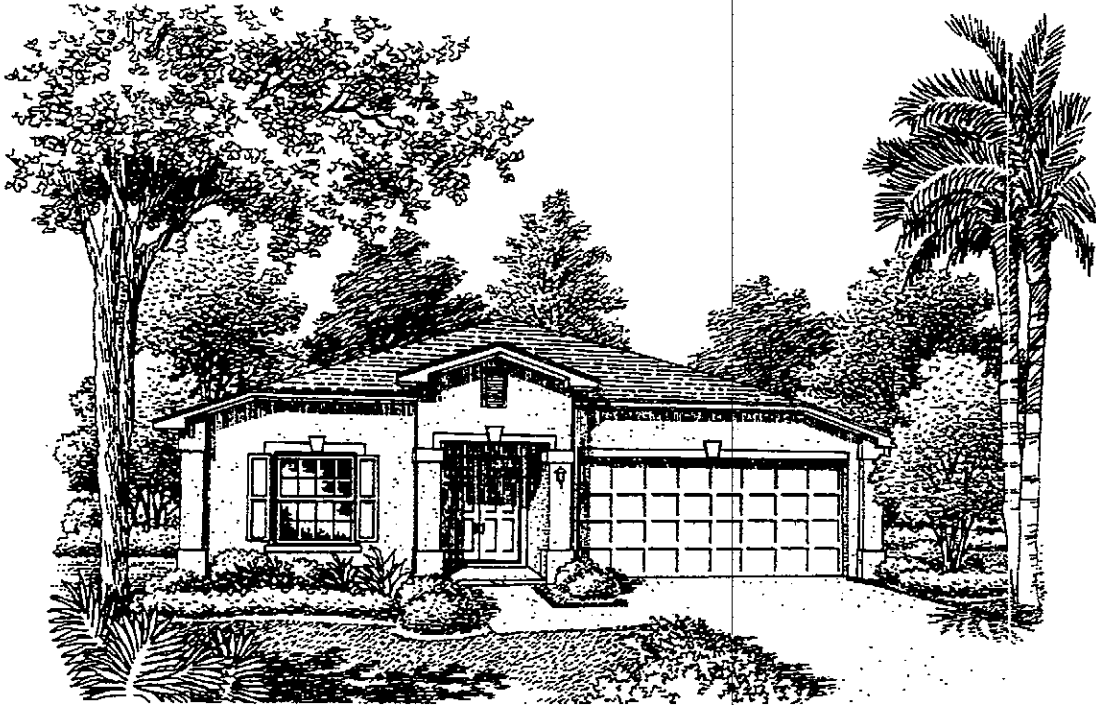
DORCHESTER

2074 / 2073



Artist Conception

Exterior Design A

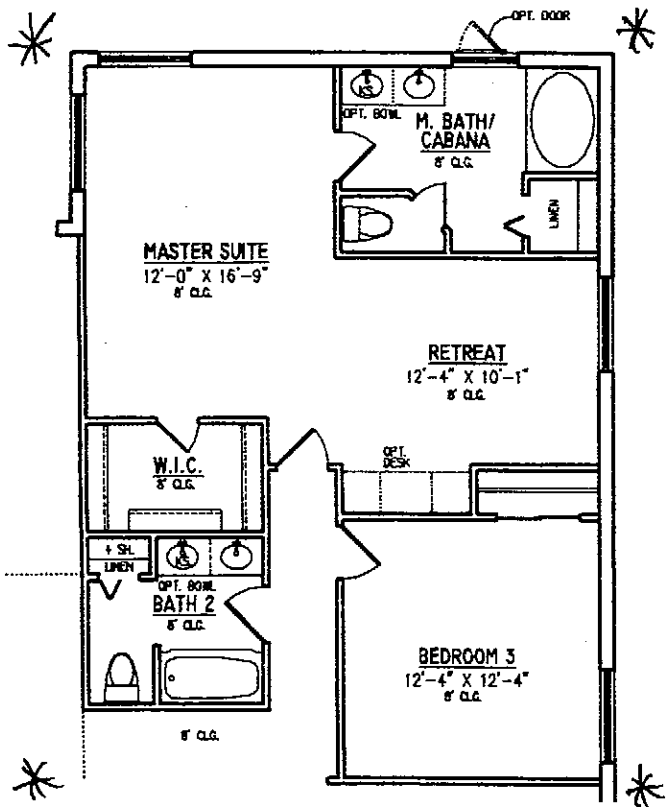


Artist Conception

Exterior Design B

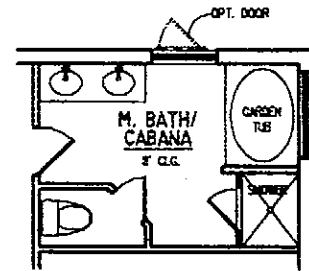


• HOMES •
BEAZER
www.beazer.com



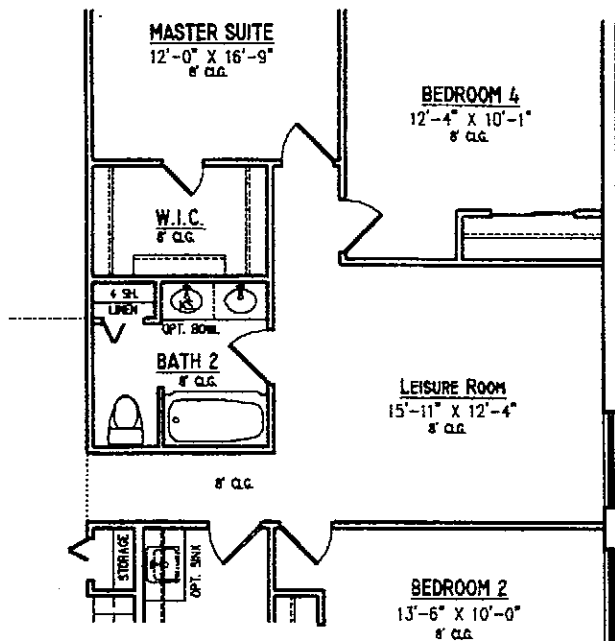
**OPTIONAL RETREAT
 IN LIEU OF BEDROOM 4**

RMS 02100



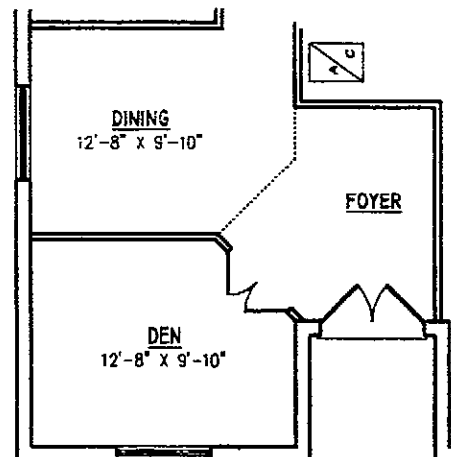
**OPTIONAL DELUXE
 IN MASTER BATH**

RMS 01031



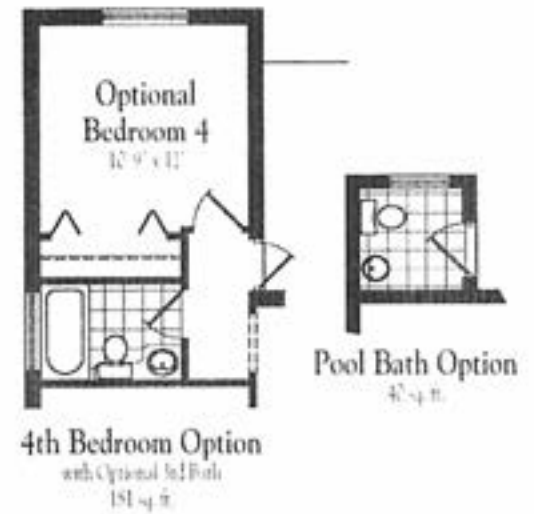
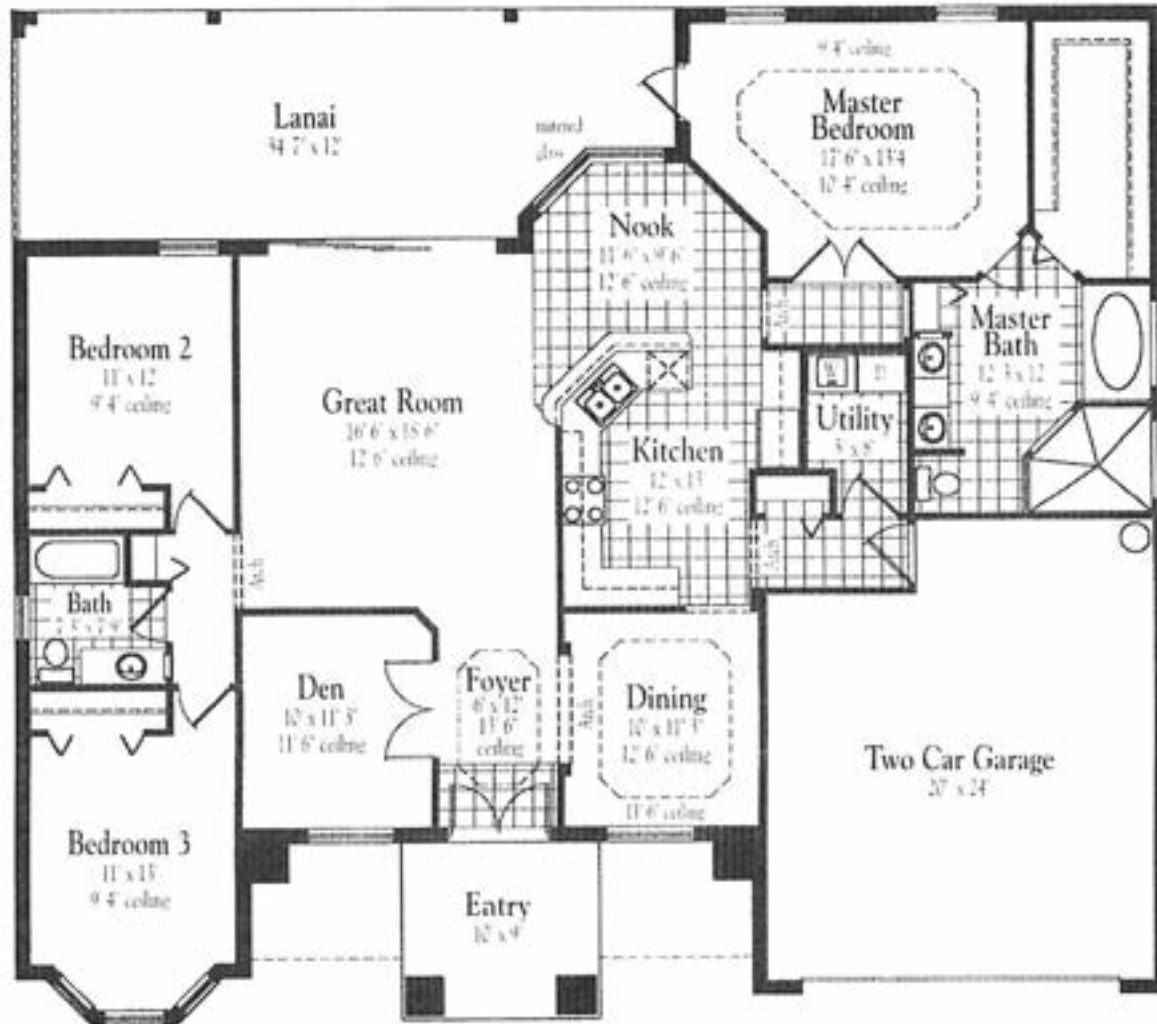
**OPTIONAL LEISURE ROOM
 IN LIEU OF BEDROOM 3**

RMS 02200



**OPTIONAL DEN
 IN LIEU OF LIVING**

RMS 01186



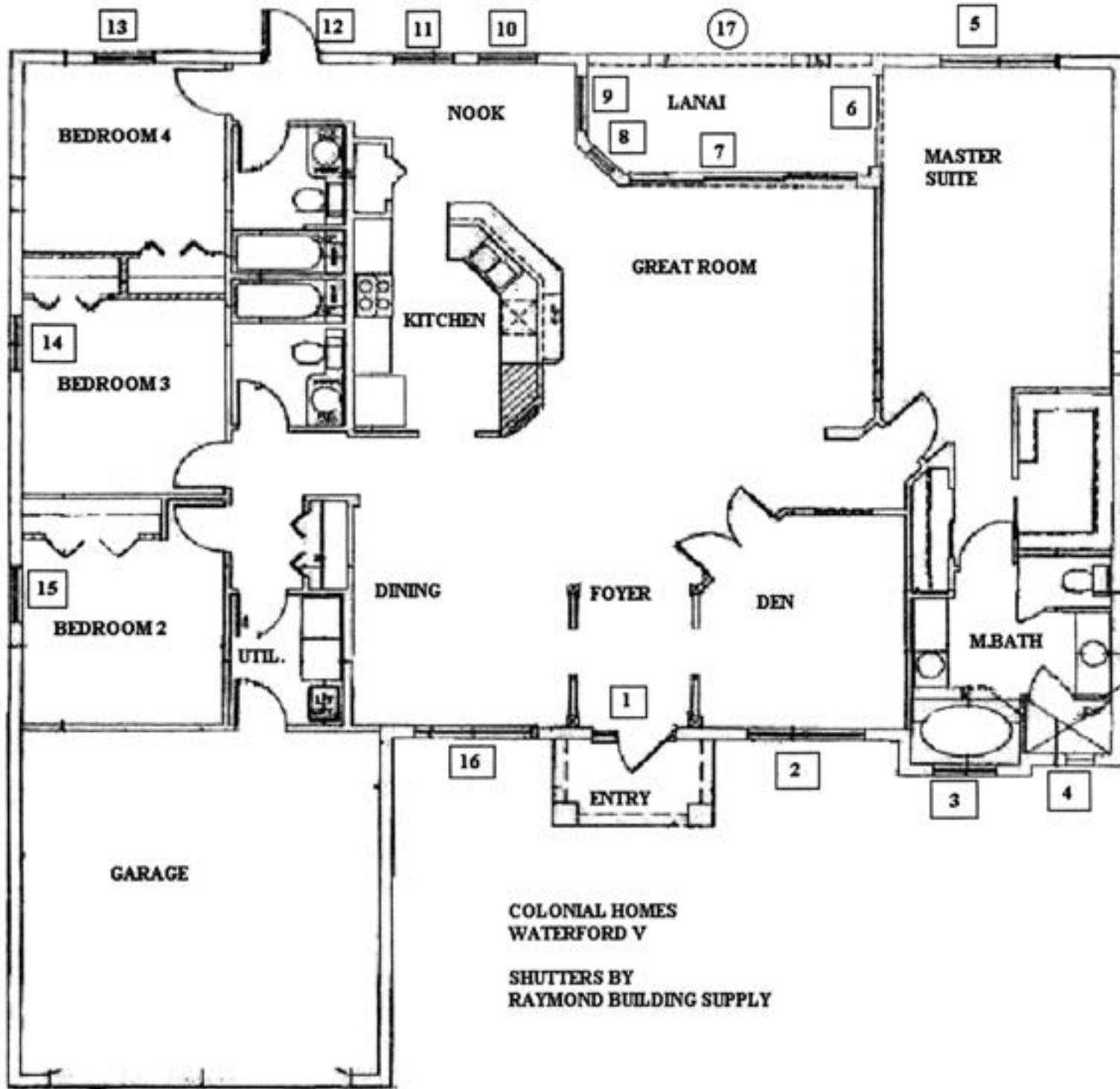
© 2000 Gulfstream Homes

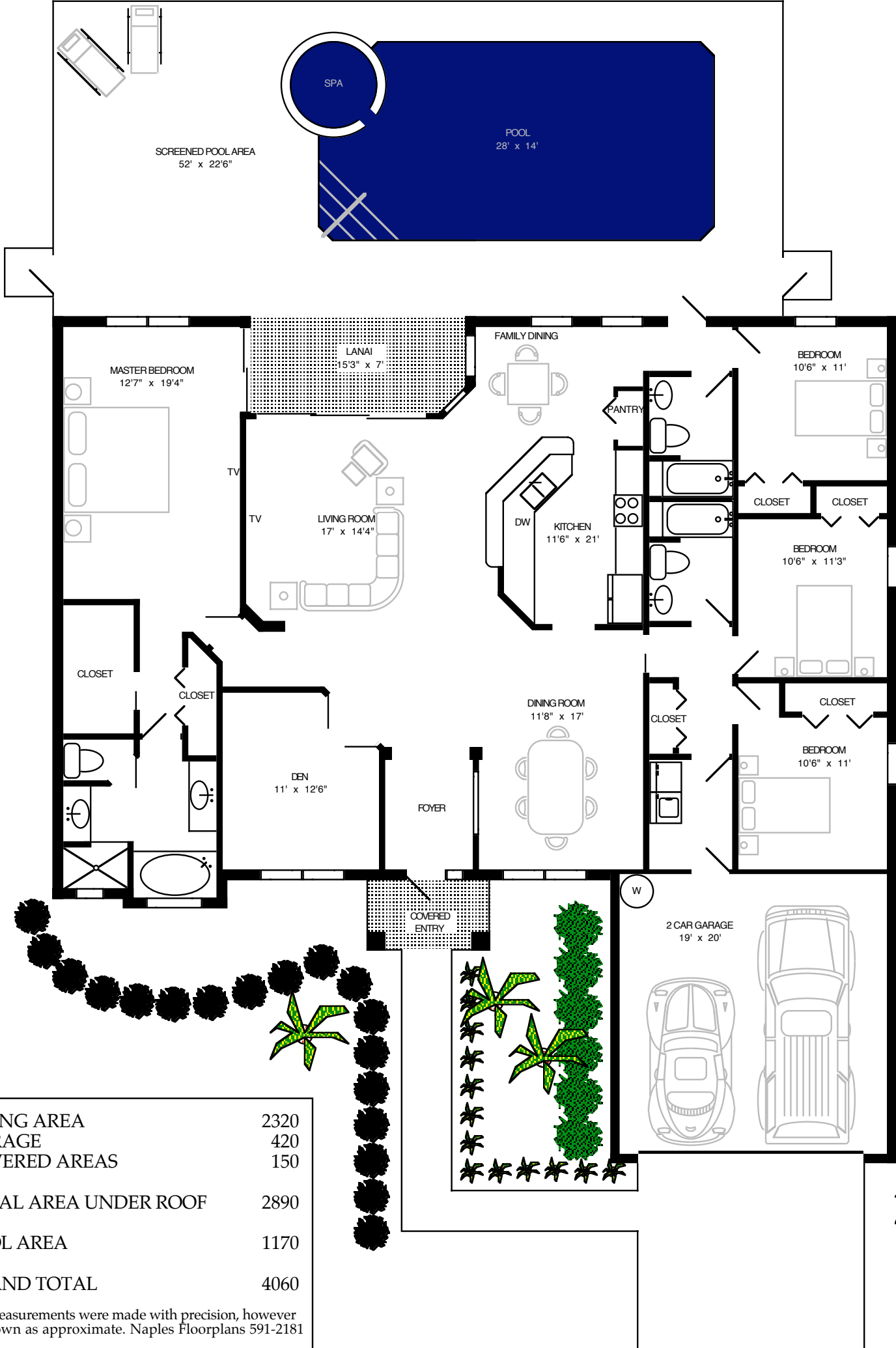


GH
Gulfstream Homes
A Better Way To Build

www.gulfstreamhomes.com

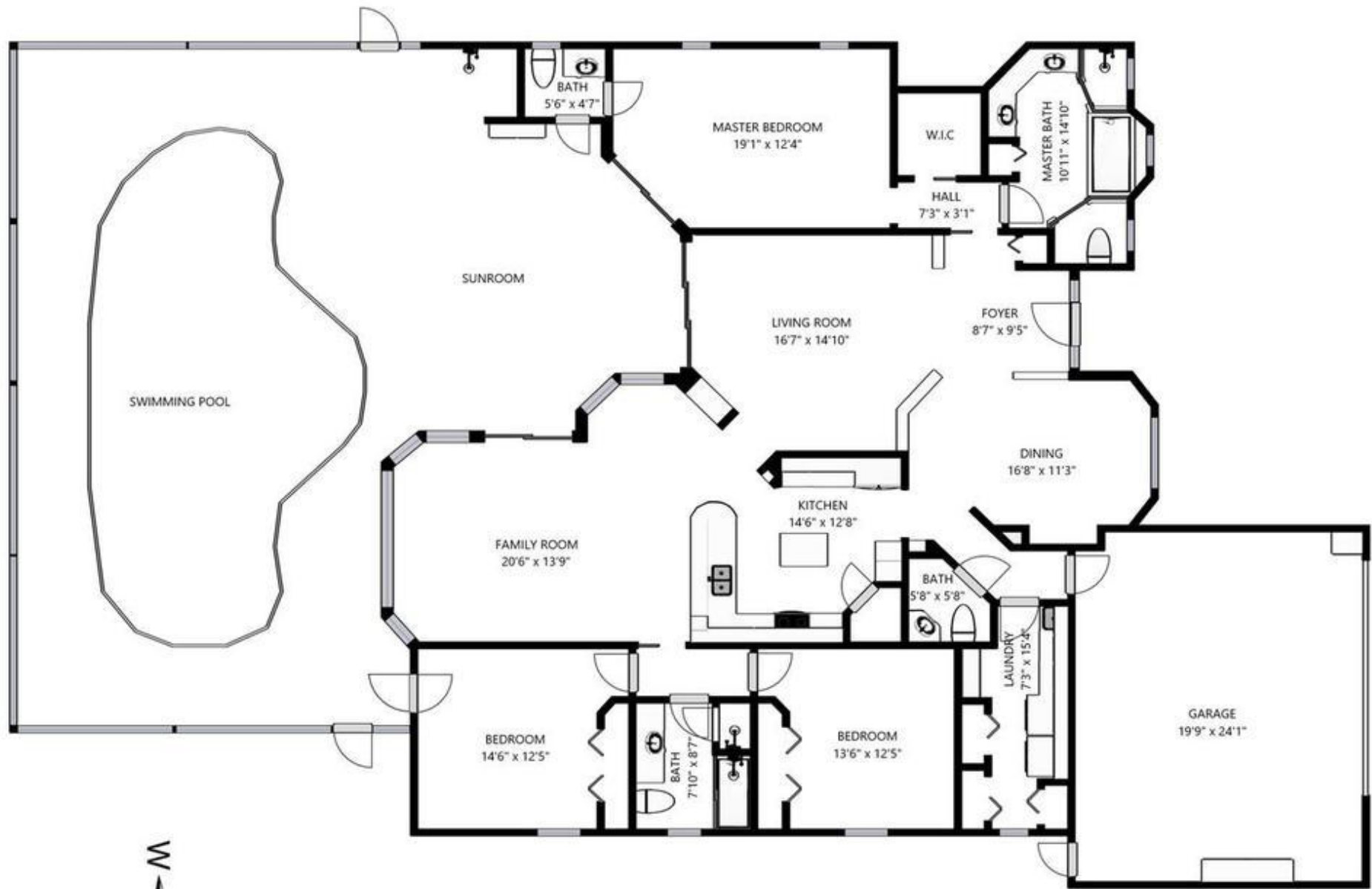
All plans, dimensions and information are approximate and subject to change without notice.





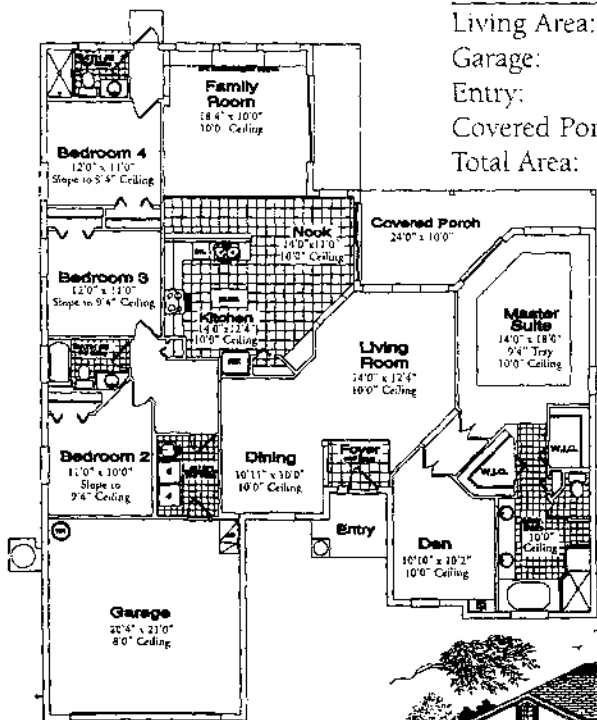
LIVING AREA	2320
GARAGE	420
COVERED AREAS	150
TOTAL AREA UNDER ROOF	2890
POOL AREA	1170
GRAND TOTAL	4060

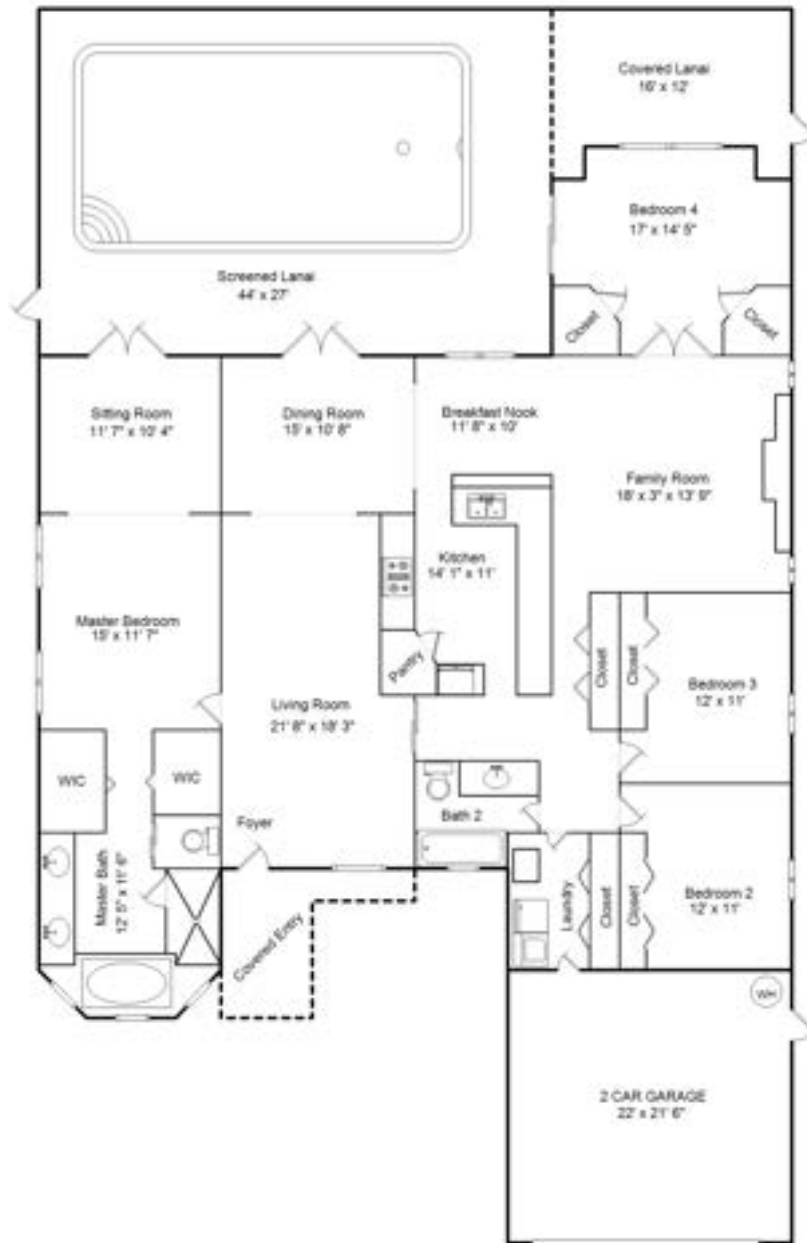
All measurements were made with precision, however are shown as approximate. Naples Floorplans 591-2181



THE ASHFORD II BY COLONIAL HOMES

Living Area:	2,534 SQ FT
Garage:	469 SQ FT
Entry:	49 SQ FT
Covered Porch:	256 SQ FT
Total Area:	3,308 SQ FT

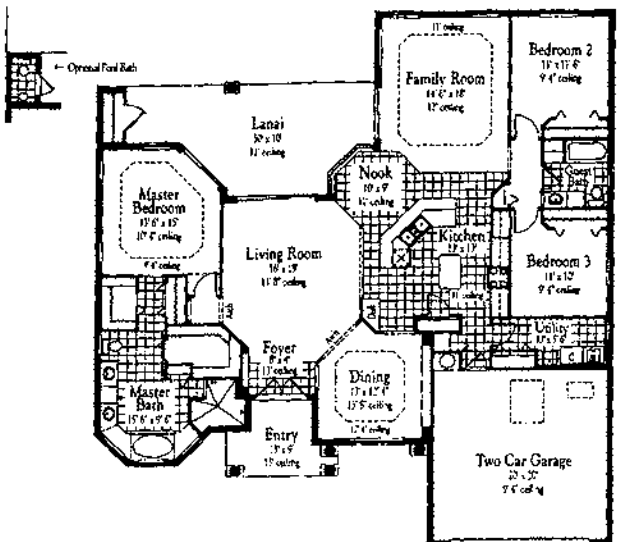




Area Sizes

Living Area:	2,629 sq ft
Screened Lanai:	1,188 sq ft
Covered Lanai:	174 sq ft
2 Car Garage:	529 sq ft
Covered Entry:	146 sq ft



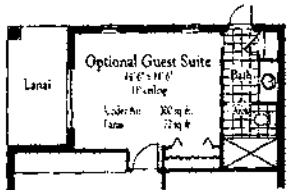


©1990 Construction Features



THE SIERRA BY GULFSTREAM HOMES

Living Area:	2,638 SQ FT
Lanai:	312 SQ FT
Garage:	441 SQ FT
Entry:	89 SQ FT
Total:	3,549 SQ FT



THE BRISTOL

2674



Artist Conception

Exterior Design A



Artist Conception

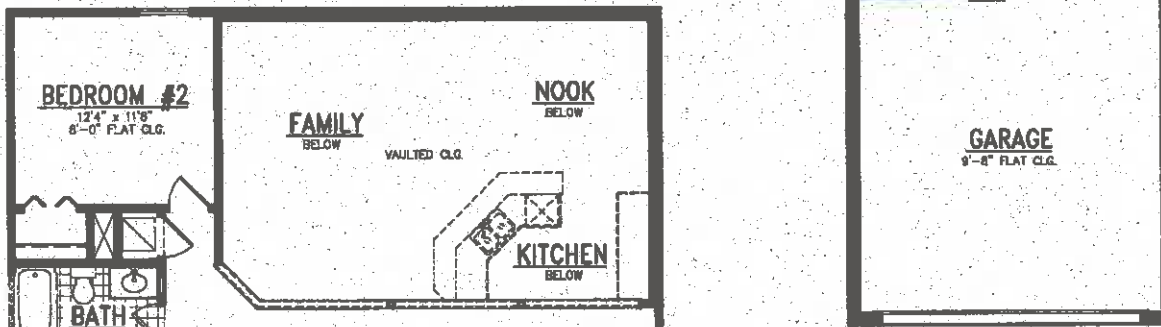
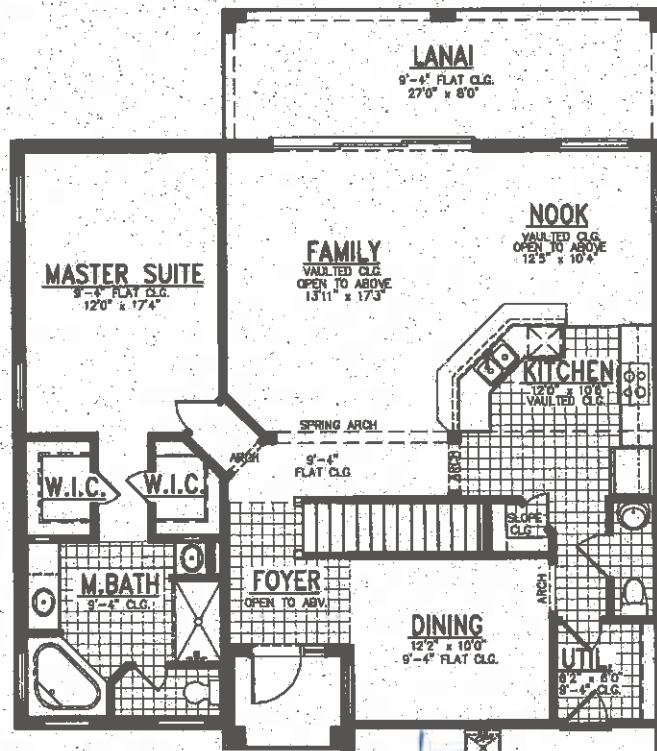
Exterior Design B



• HOMES •
BEAZER
www.beazer.com

The Bristol
2674

1st. FLOOR PLAN



2nd. FLOOR PLAN

TEMPORARY BROCHURE ONLY, MAY NOT REFLECT ACTUAL CHARACTERISTICS OF FINISHED HOME. FLOOR PLANS ARE SHOWN ONLY FOR DISPLAY PURPOSES. WINDOW SIZES AND LOCATIONS, ROOM SIZES, AND DIMENSIONS ARE APPROXIMATE AND MAY VARY. PRICES AND FEATURES SUBJECT TO CHANGE WITHOUT NOTICE. PLEASE CONSULT SALES COUNSELOR FOR DESIGN UPDATES. CGC 048881



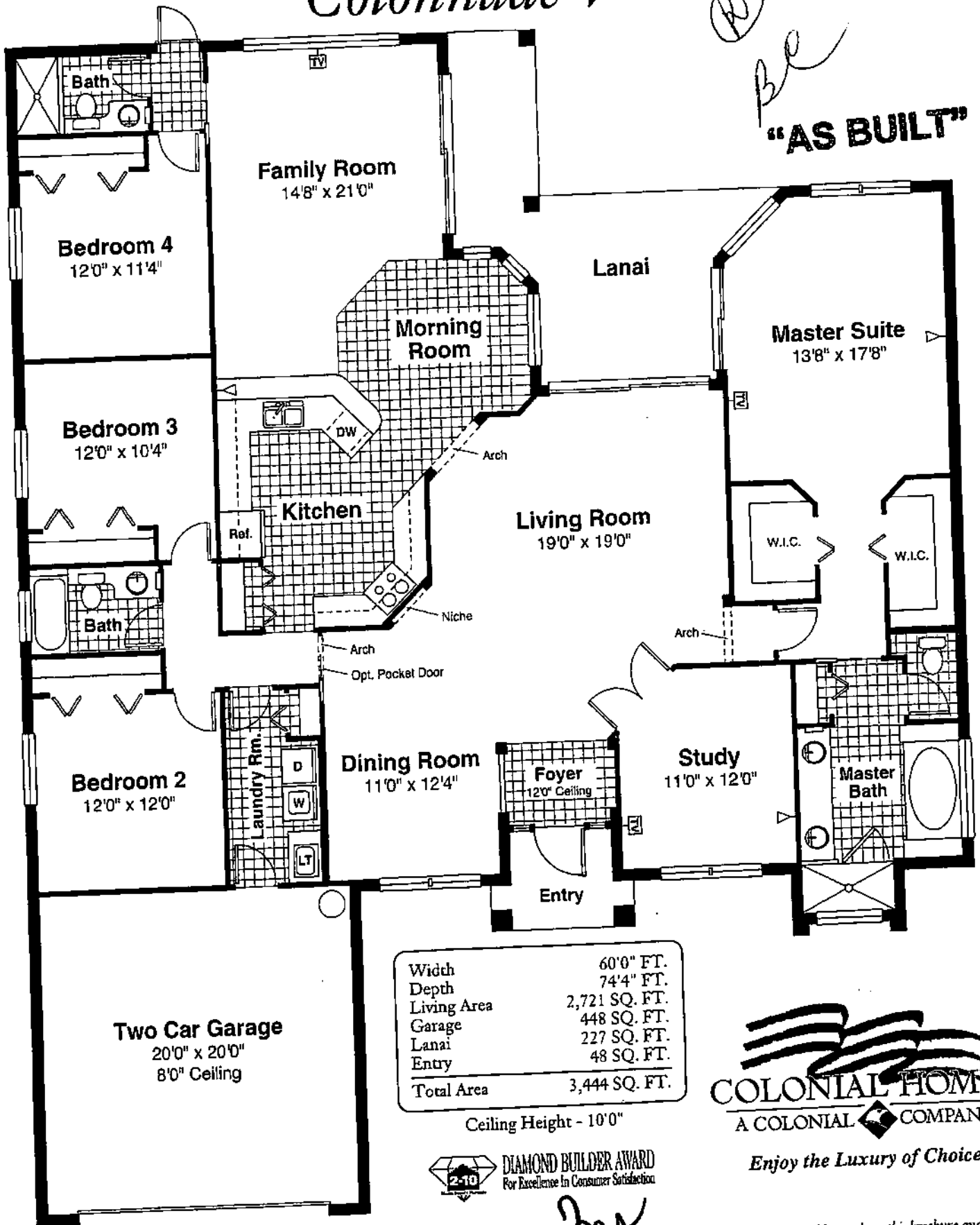
• HOMES •
BEAZER
www.beazer.com

1st Floor Area	1411 S.F.
2nd Floor Area	1263 S.F.
Total Living Area	2674 S.F.
Garage	440 S.F.
Lanai	216 S.F.
Entry	36 S.F.
Total Sq.Ft.	3366 S.F.

Date
12-6-00

Colonnade V

8-30-07
8-30-03
Be
"AS BUILT"



Width	60'0" FT.
Depth	74'4" FT.
Living Area	2,721 SQ. FT.
Garage	448 SQ. FT.
Lanai	227 SQ. FT.
Entry	48 SQ. FT.
Total Area	3,444 SQ. FT.

Ceiling Height - 10'0"



DIAMOND BUILDER AWARD
For Excellence in Consumer Satisfaction



Enjoy the Luxury of Choice.



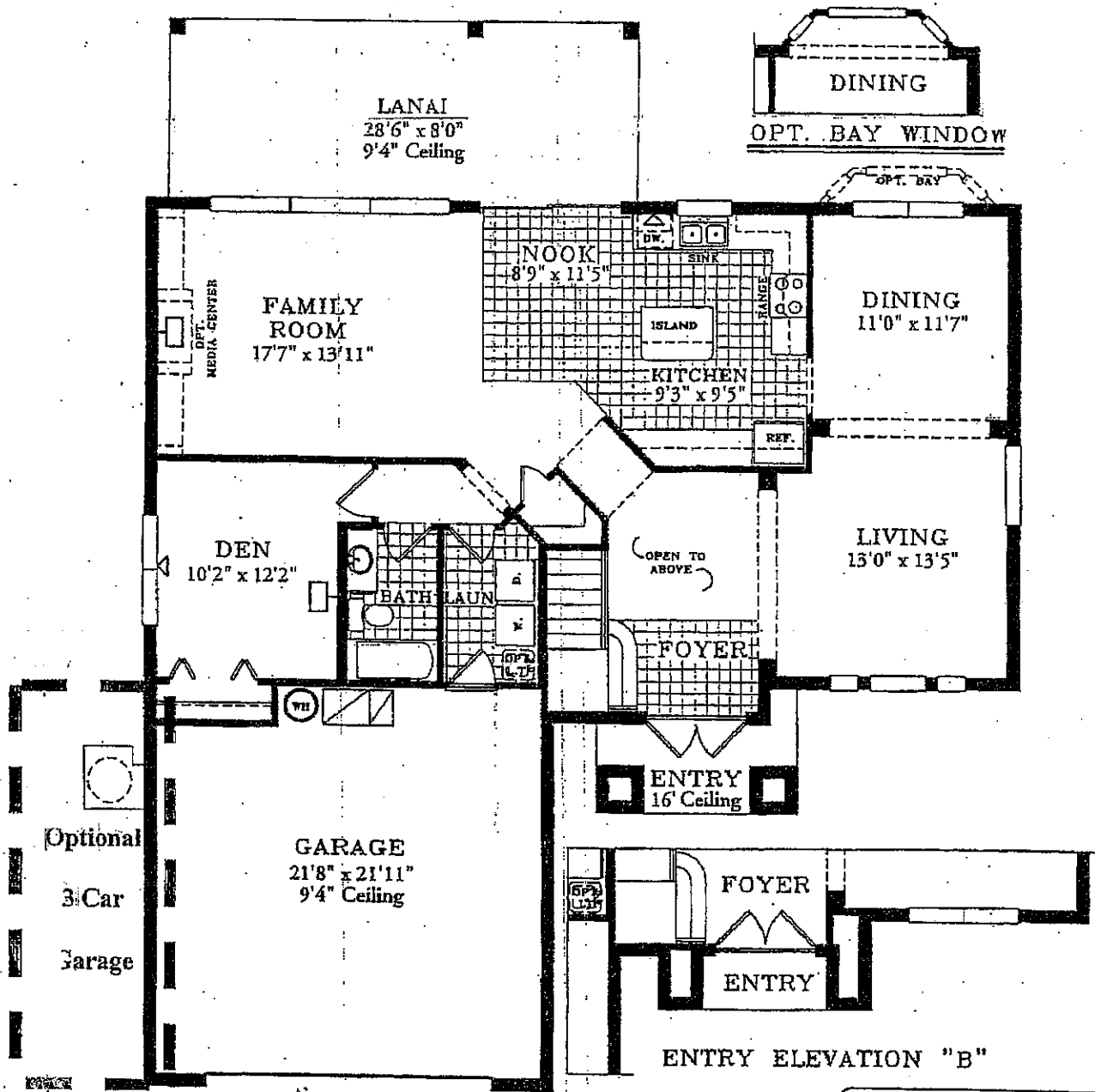
Oral Representations cannot be relied upon as correctly stating representations of the developer. For correct representations reference should be made to this brochure and to the documents furnished by the developer. All plans are artist renderings and all dimensions are approximate, and may vary with actual construction. Floor plans, square footages, window sizes and room sizes may vary based on the elevation selected. Landscaping on the rendering is shown only for display. Colonial Homes reserves the right to modify all plans and specifications without notice or obligation.

Lic. # CB-C047688

4/14/0

The Wellington II

First Floor



Width	49'4" FT.
Depth	50'0" FT.
Living 1st	1,404 SQ. FT.
Living 2nd	1,375 SQ. FT.
Total Living	2,779 SQ. FT.
Garage	501 SQ. FT.
Entry	60 SQ. FT.
Covered Porch	208 SQ. FT.
Total Area	3,548 SQ. FT.

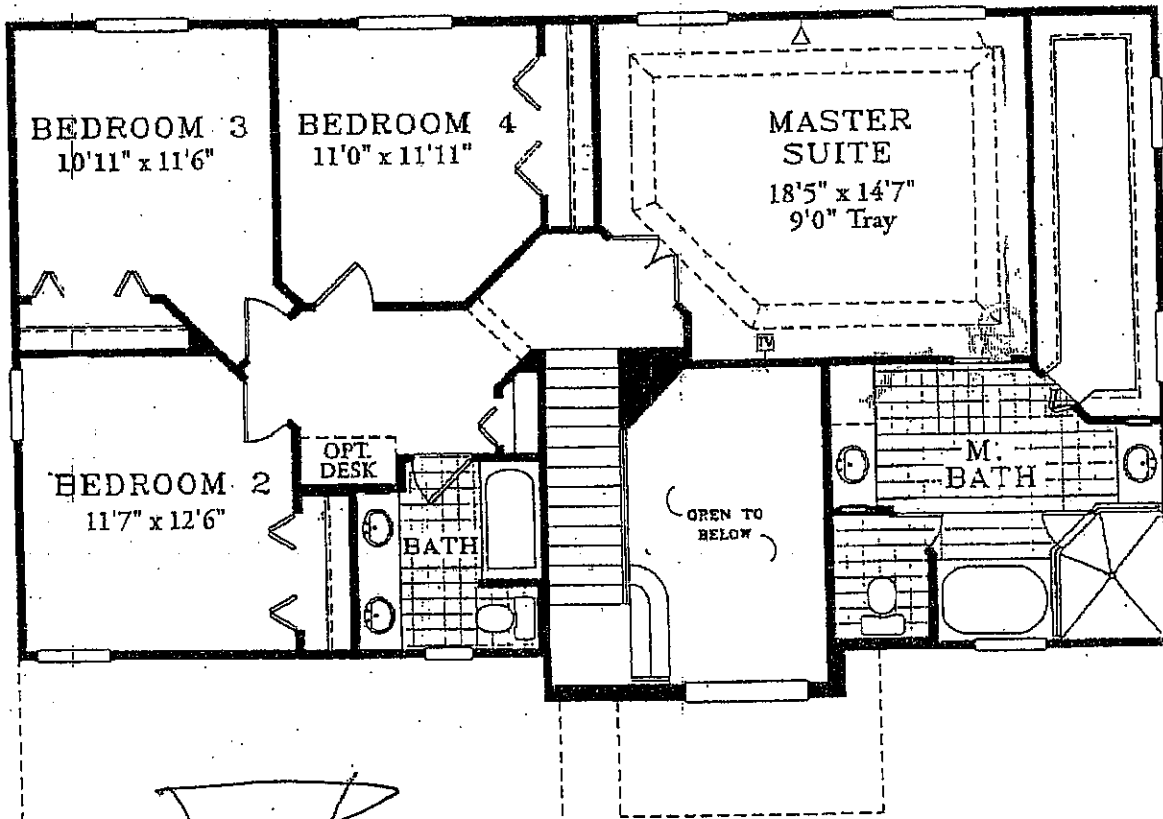
First Floor Ceiling Height - 9'4"
 Second Floor Ceiling Height - 8'0"



Oral Representations cannot be relied upon as correctly stating representations of the developer. For correct representations reference should be made to this brochure and to the documents furnished by the developer. All plans are artist renderings and all dimensions are approximate, and may vary with actual construction. Floor plans, window sizes and room sizes may vary based on the elevation selected. Landscaping on the rendering is shown only for display. Colonial Homes reserves the right to modify all plans and specifications without notice or obligation.

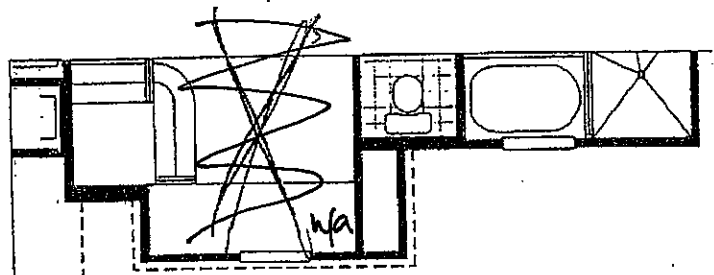
The Wellington II

Second Floor



~~Optional
"Bonus Room"~~
Can be seen in the Indigo Lakes Model

n/a

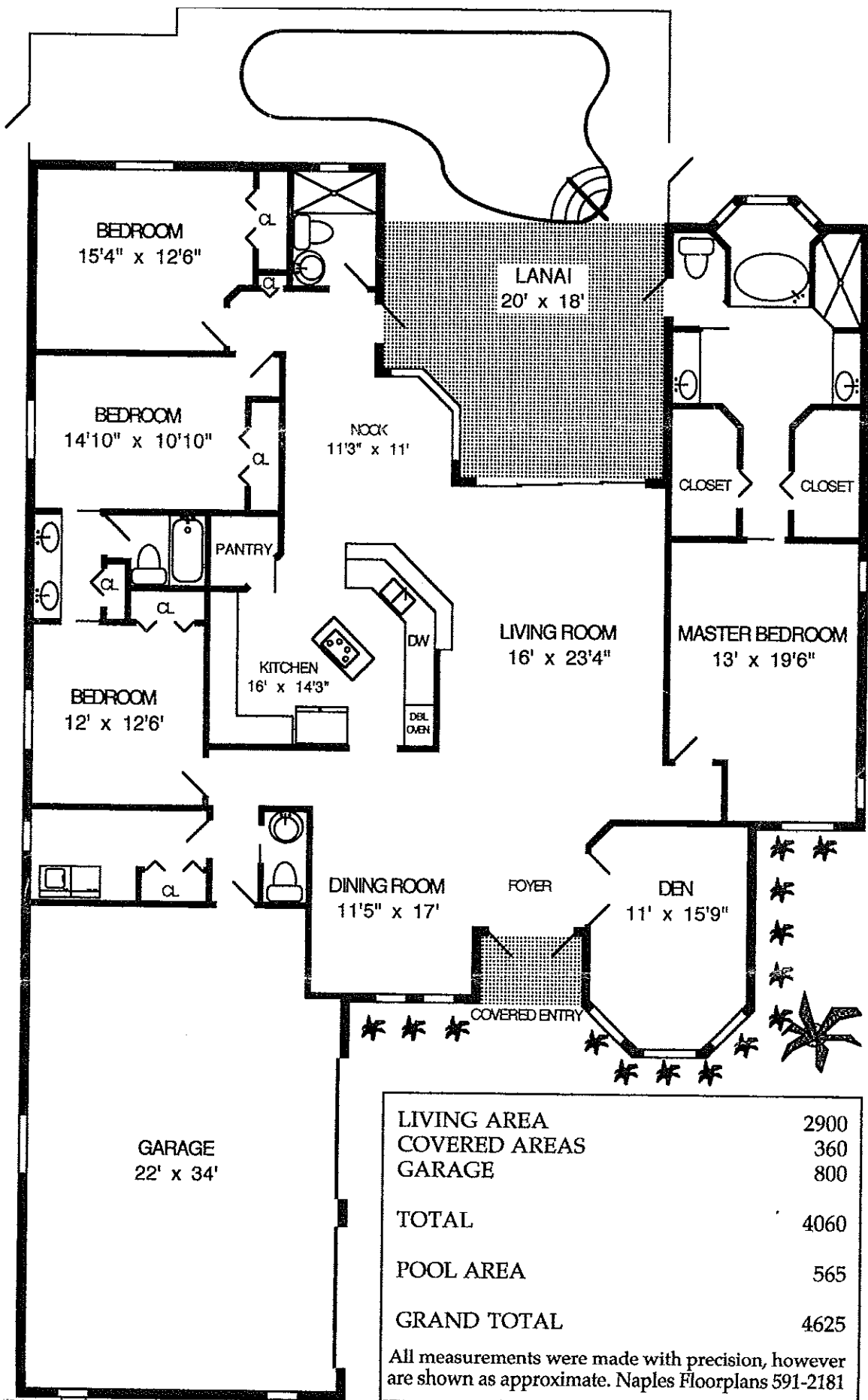


ENTRY ELEVATION "B"



Oral Representations cannot be relied upon as correctly stating representations of the developer. For correct representations reference should be made to this brochure and to the documents furnished by the developer. All plans are artist renderings and all dimensions are approximate, and may vary with actual construction. Floor plans, window sizes and room sizes may vary based on the elevation selected. Landscaping on the rendering is shown only for display. Colonial Homes reserves the right to modify all plans and specifications without notice or obligation.





Ashford V with Bonus Room



Width	59'0" FT.
Depth	72'0" FT.
Living 1st	2,534 SQ. FT.
Living 2nd	373 SQ. FT.
Total Living	2,907 SQ. FT.
Garage	469 SQ. FT.
Lanai	178 SQ. FT.
Entry	49 SQ. FT.
Total Area	3,603 SQ. FT.

First Floor Ceiling Height - 10'0"
 Second Floor Ceiling Height - 8'0"

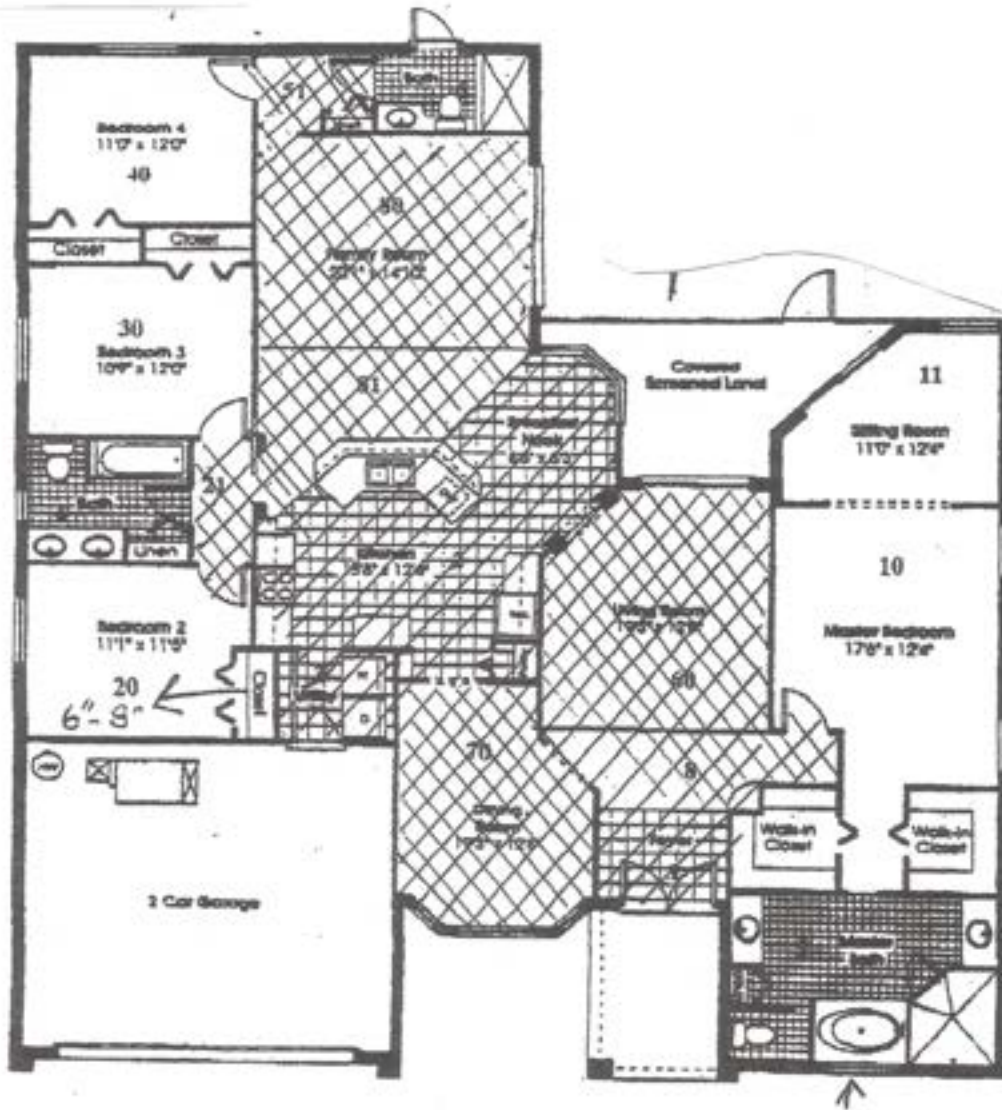


Oral Representations cannot be relied upon as correctly stating representations of the developer. For correct representations reference should be made to this brochure and to the documents furnished by the developer. All plans are artist renderings and all dimensions are approximate, and may vary with actual construction. Floor plans, window sizes and room sizes may vary based on the elevation selected. Landscaping on the rendering is shown only for display. Colonial Homes reserves the right to modify all plans and specifications without notice or obligation.

Lic. # CB-C047688

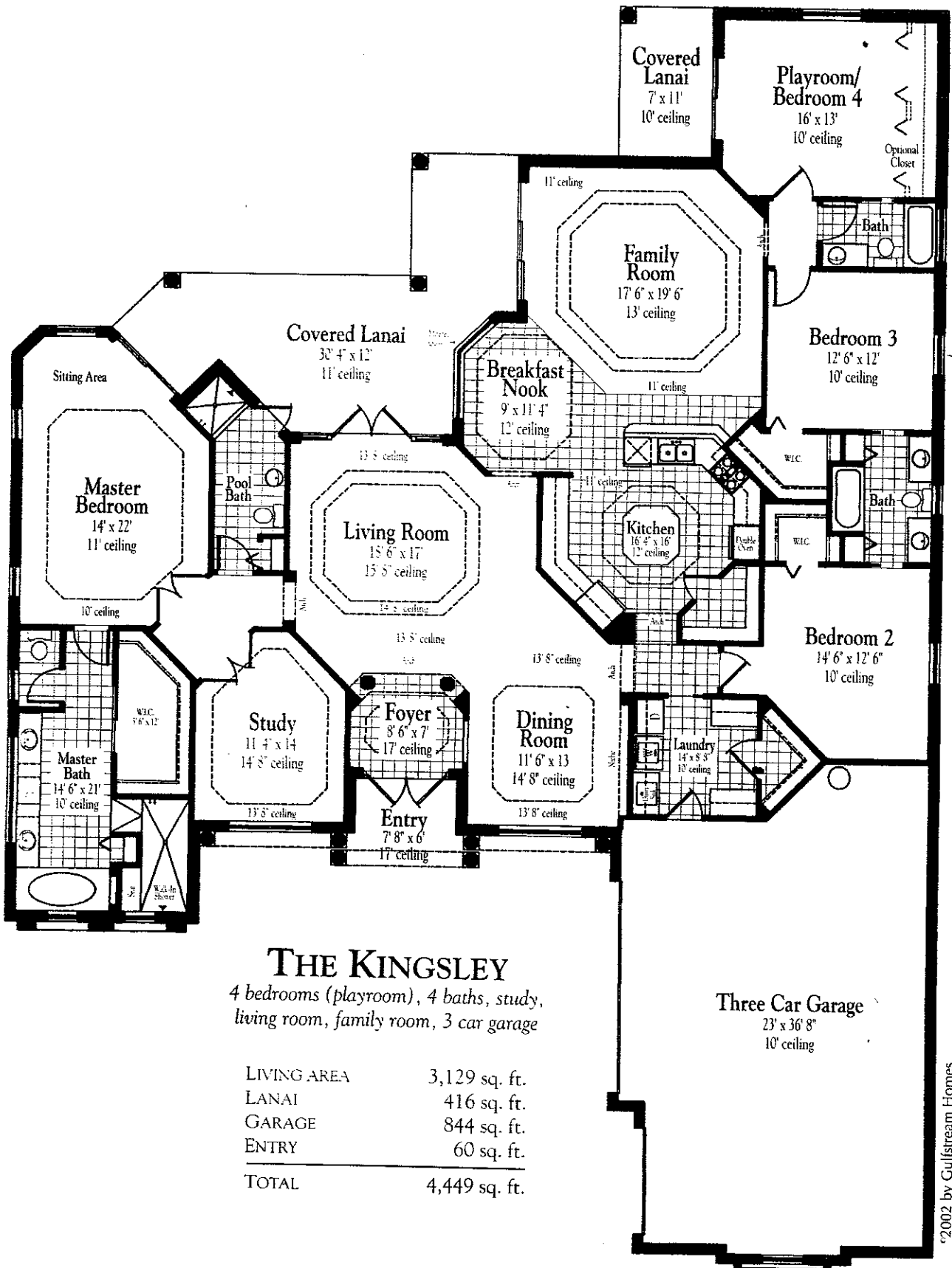
10/21/02

The Spinnaker



Summary
 4 Bedrooms, 3 Bath,
 Family Room, 2 Car Garage,
 Air Conditioned Sq. Ft. 2,410
 Total Sq. Ft. 3,033

COLONIAL HOMES
 A COLONIAL COMPANY



THE KINGSLEY

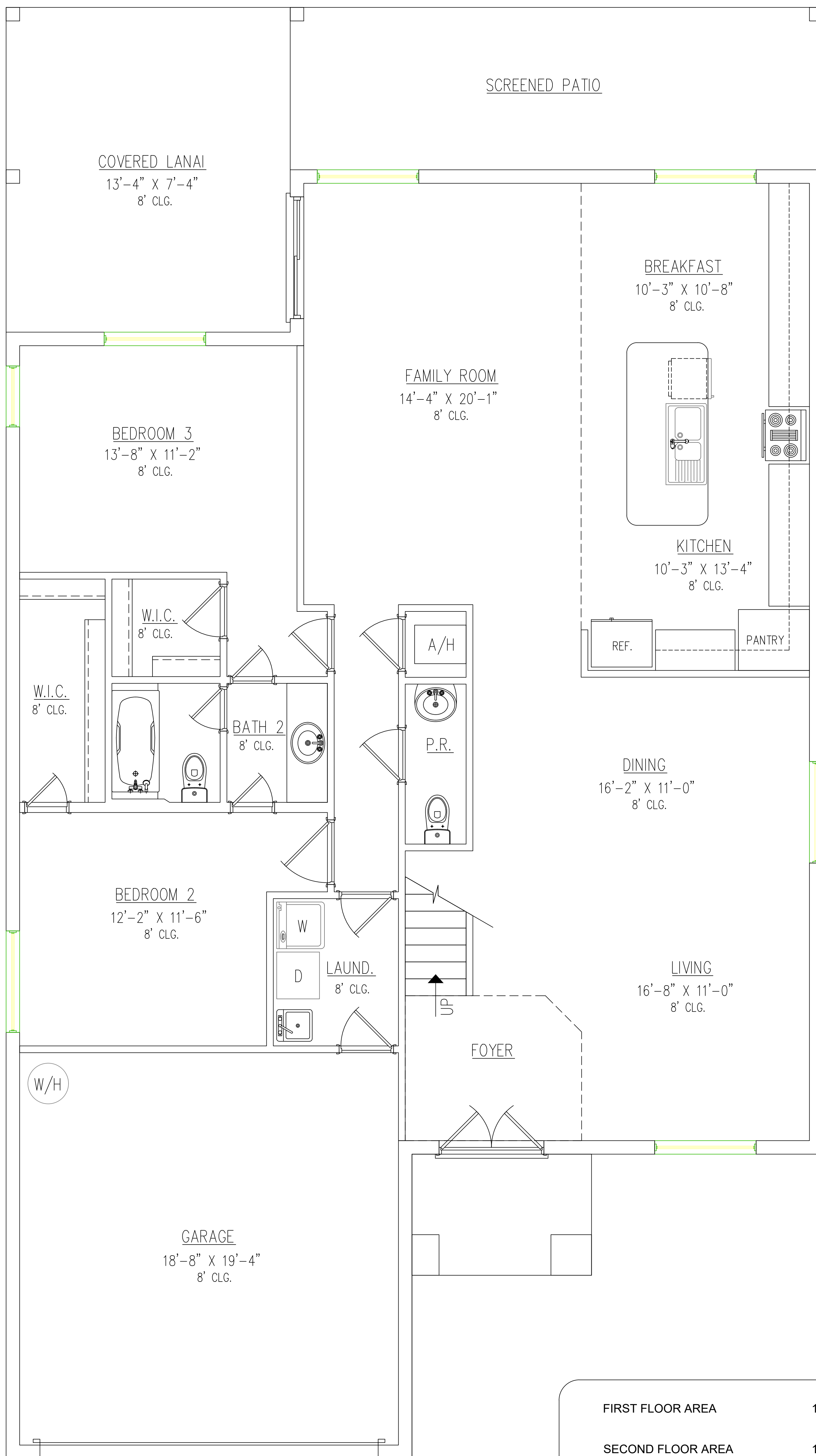
4 bedrooms (playroom), 4 baths, study,
living room, family room, 3 car garage

LIVING AREA	3,129 sq. ft.
LANAI	416 sq. ft.
GARAGE	844 sq. ft.
ENTRY	60 sq. ft.
TOTAL	4,449 sq. ft.



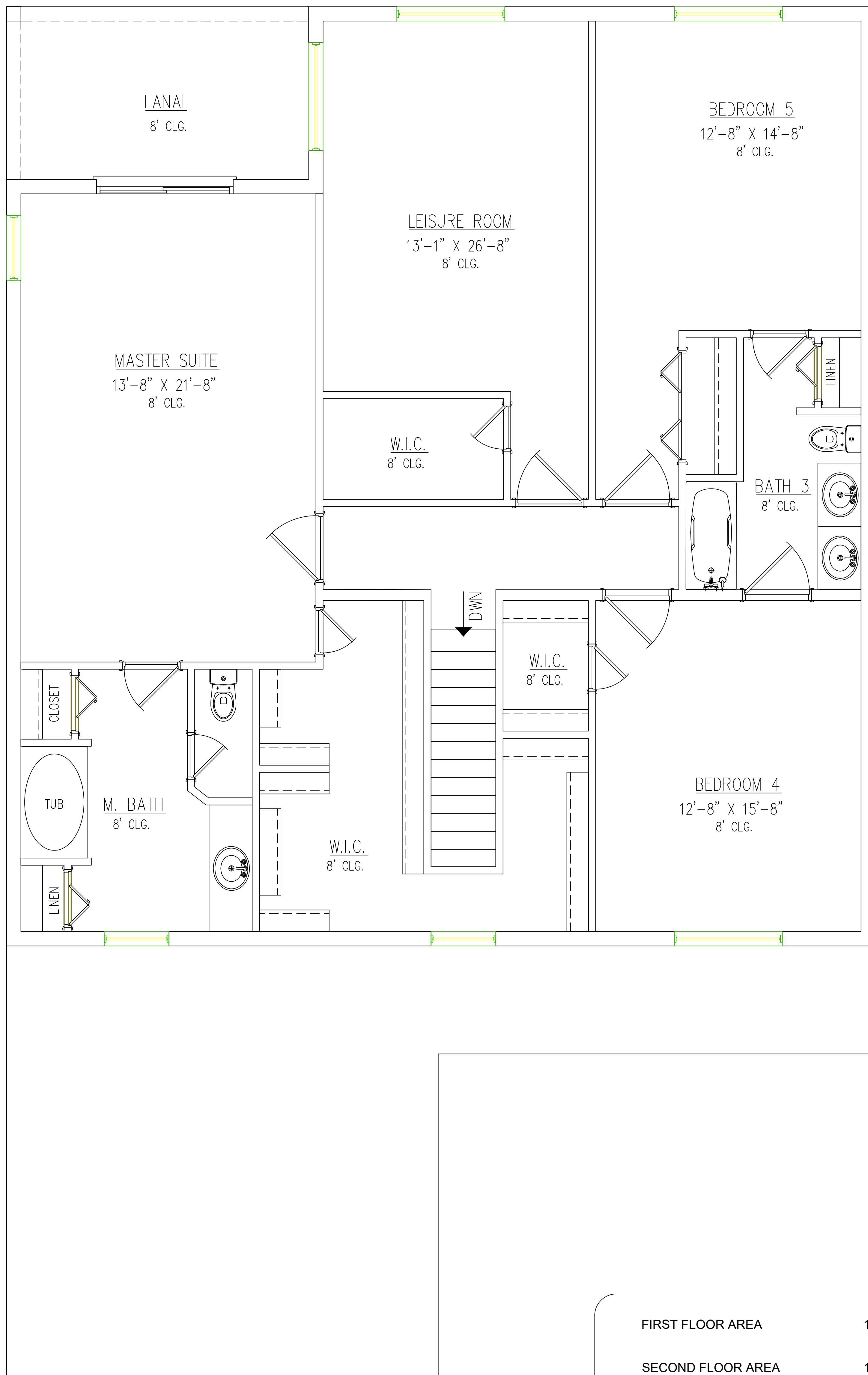
www.gulfstreamhomes.com

All plans, dimensions and information are approximate and subject to change without notice.



FIRST FLOOR AREA	1692 S.F.
SECOND FLOOR AREA	1692 S.F.
TOTAL LIVING AREA	3210 S.F.

FIRST FLOOR PLAN



FIRST FLOOR AREA	1692 S.F.
SECOND FLOOR AREA	1692 S.F.
TOTAL LIVING AREA	3210 S.F.

SECOND FLOOR PLAN

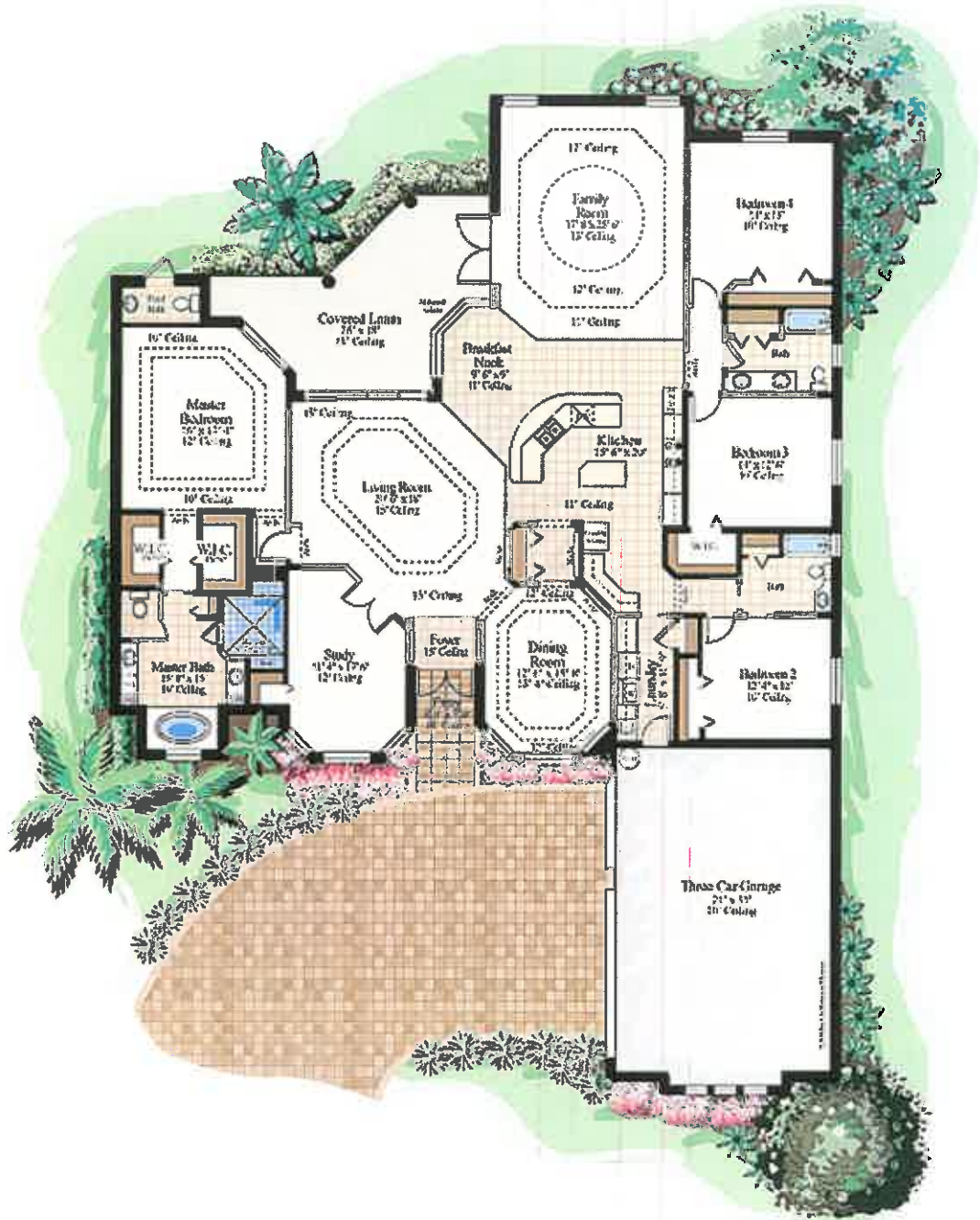


First Floor

- 5 Bedrooms
- 3 Full & 2 Half Bathrooms
- 3,253 A/C SqFt.
- 4,135 Total SqFt.



Second Floor



Belize



Four Bedrooms, Three and One-half Baths,
Morning Room, Study, Living Room,
Leisure Room and Three-Car Garage

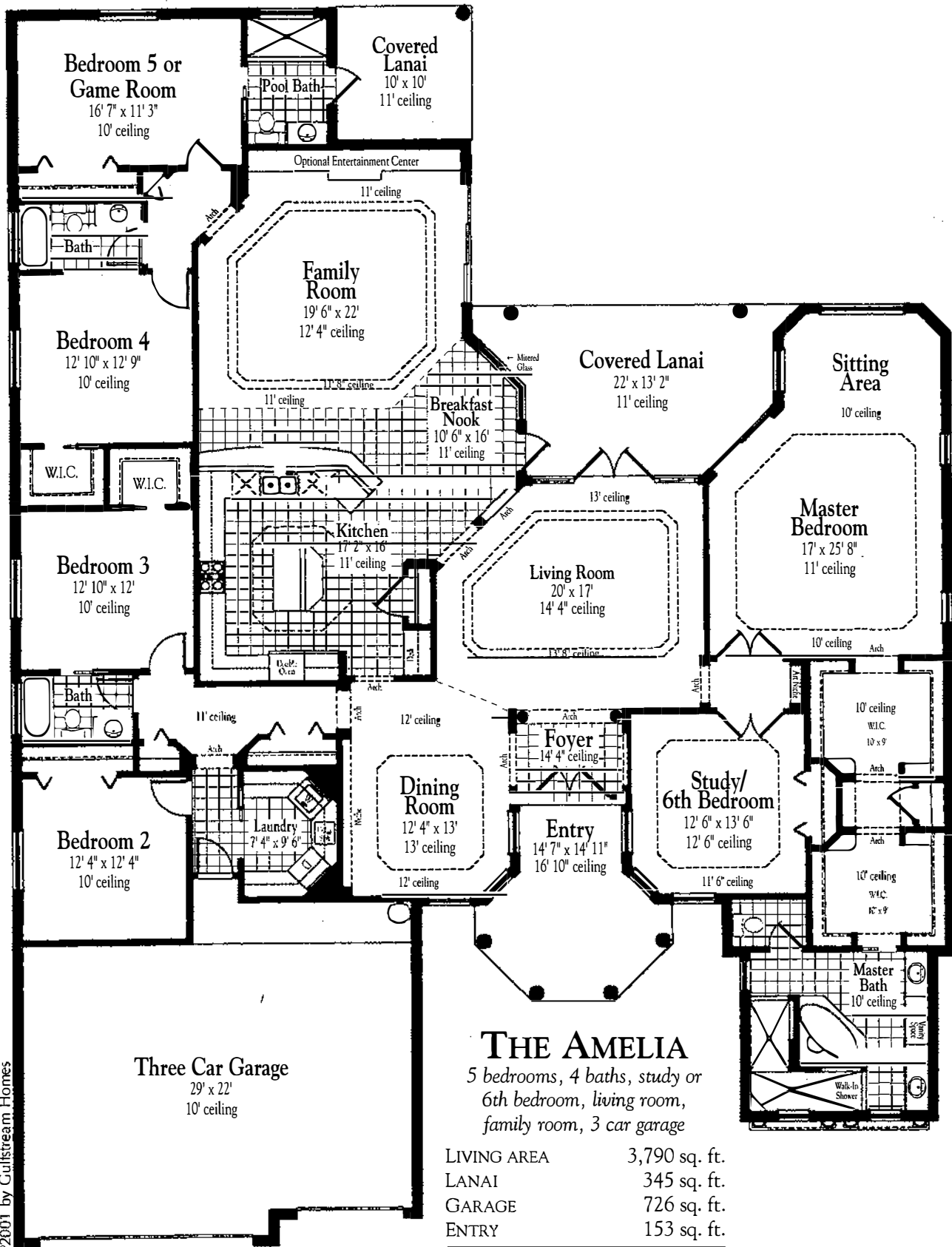
Living	3,433 Sq. Ft.
Covered Lanai	363 Sq. Ft.
Entry	85 Sq. Ft.
Garage	732 Sq. Ft.

TOTAL **4,613 Sq. Ft.**

ARTIST CONCEPT

DEANGELIS  DIAMOND
H · O · M · E · S

All plans, renderings, dimensions and information are approximate and subject to change without notice or obligation.
All renderings are artist concepts. This material shall not constitute a valid offer in any state where prior registration is required.



THE AMELIA

5 bedrooms, 4 baths, study or 6th bedroom, living room, family room, 3 car garage

LIVING AREA	3,790 sq. ft.
LANAI	345 sq. ft.
GARAGE	726 sq. ft.
ENTRY	153 sq. ft.
TOTAL	5,014 sq. ft.



www.gulfstreamhomes.com

All plans, dimensions and information are approximate and subject to change without notice.

Cambridge IV with Bonus Room

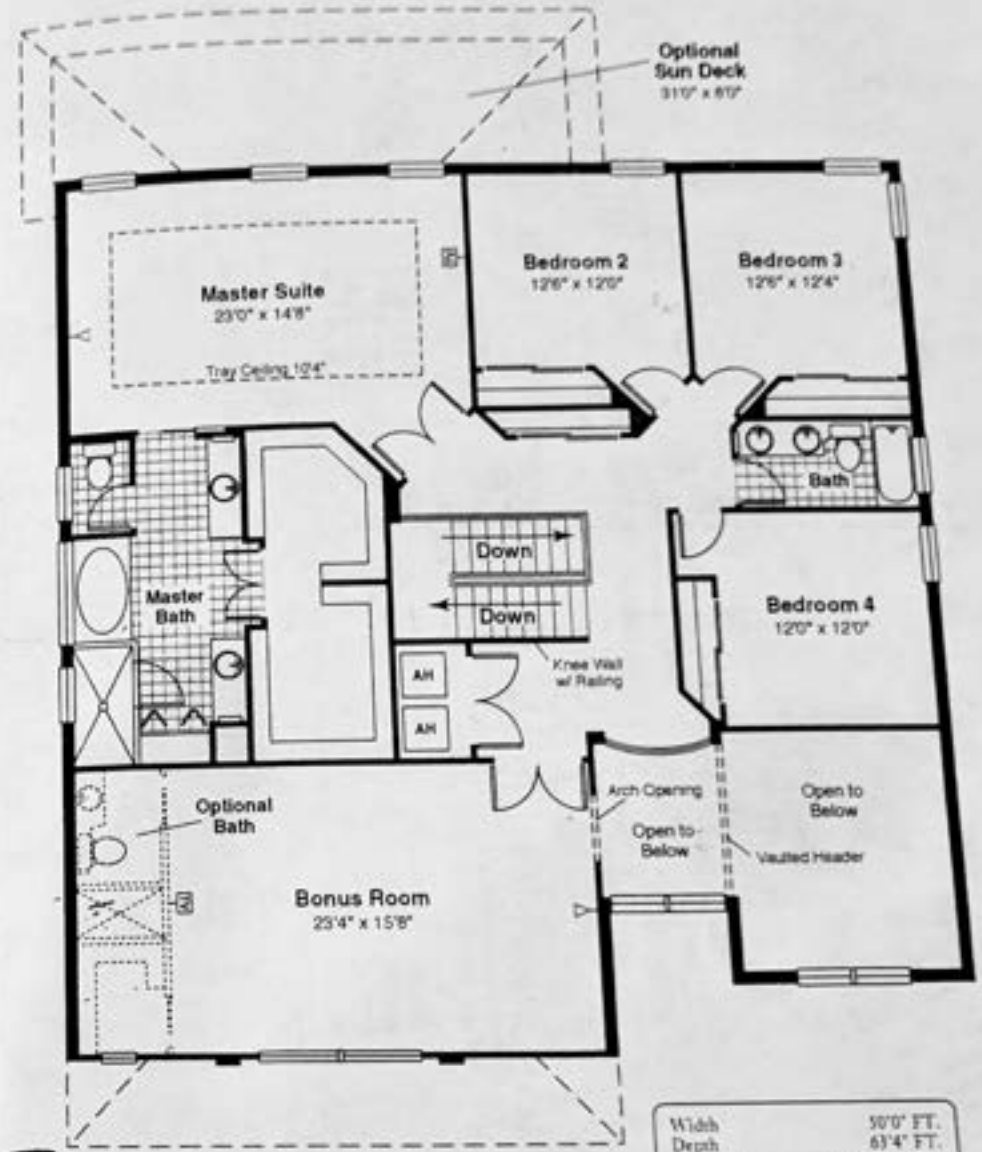


Elevation A

Cambridge IV with Bonus Room

1st Floor

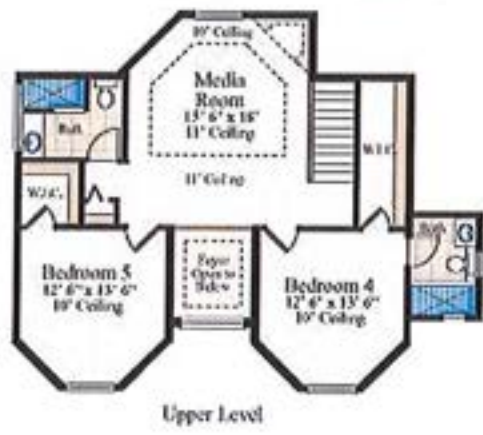
2nd Floor



Width	30'0" FT.
Depth	63'4" FT.
Living 1st	1,939 SQ. FT.
Living 2nd	2,115 SQ. FT.
Garage Area	626 SQ. FT.
Lanai Area	248 SQ. FT.
Sun Deck Area	248 SQ. FT.
Total Area	5,176 SQ. FT.

1st Floor Ceiling Height - 10'0"
2nd Floor Ceiling Height - 9'4"

Oral Representations cannot be relied upon as correctly stating representations of the developer. For correct representations reference should be made to this brochure and to the documents furnished by the developer. All plans are artist renderings and all dimensions are approximate, and may vary with actual construction. Floor plans, window sizes and room sizes may vary based on the elevation selected. Landscaping on the rendering is shown only for display. Colonial Homes reserves the right to modify all plans and specifications without notice or obligation.



Close Window

Floor Plans

These floor plans have been assembled as a resource for you. They may not be inclusive of every home in the community.

Please note that over time, owners may make modifications to spaces that may not be captured in these original floor plans.

Renderings are not a guarantee of space measurement. Interested parties should verify through their own secured services.

Ashford V



Width	59'0" FT.
Depth	72'0" FT.
Living Area	2,534 SQ. FT.
Garage	469 SQ. FT.
Lanai	178 SQ. FT.
Entry	49 SQ. FT.
Total Area	3,230 SQ. FT.

Ceiling Height - 10'0"



Enjoy the Luxury of Choice.

Oral representations cannot be relied upon as correctly stating representations of the developer. For correct representation reference should be made to this brochure and to the documents furnished by the developer. All plans are artist renderings and all dimensions are approximate, and may vary with actual construction. Floor plans, window sizes and room sizes may vary based on the elevation selected. Landscaping on the rendering is shown only for display. Colonial Homes reserves the right to modify all plans and specifications without notice or obligation. Some options may affect the footprint of the home. These footprint changes may affect pool placement & the size as well as the home fitting of the specified lot. See Colonial Homes personnel for details.



Lic. # CB-C047688

Wellington V with Bonus Room



Elevation A



Elevation B



Oral Representations cannot be relied upon as correctly stating representations of the developer. For correct representations reference should be made to this brochure and to the documents furnished by the developer. All plans are artist renderings and all dimensions are approximate, and may vary with actual construction. Floor plans, window sizes and room sizes may vary based on the elevation selected. Landscaping on the rendering is shown only for display. Colonial Homes reserves the right to modify all plans and specifications without notice or obligation.

Lic. # CB-C047688

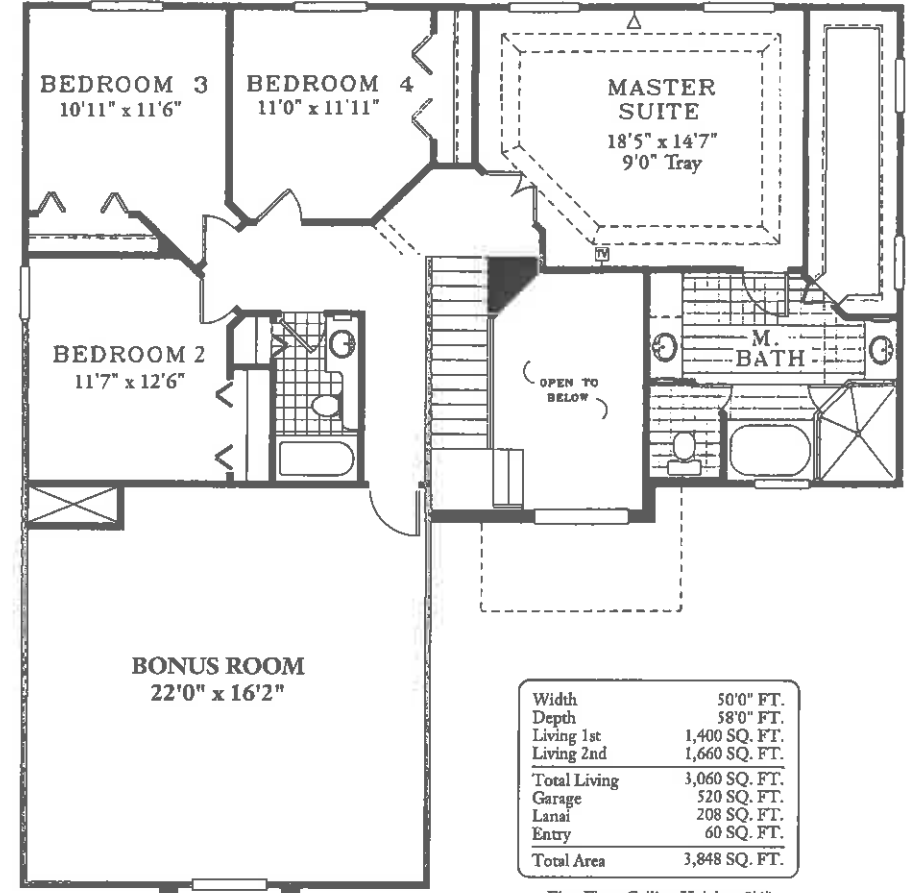
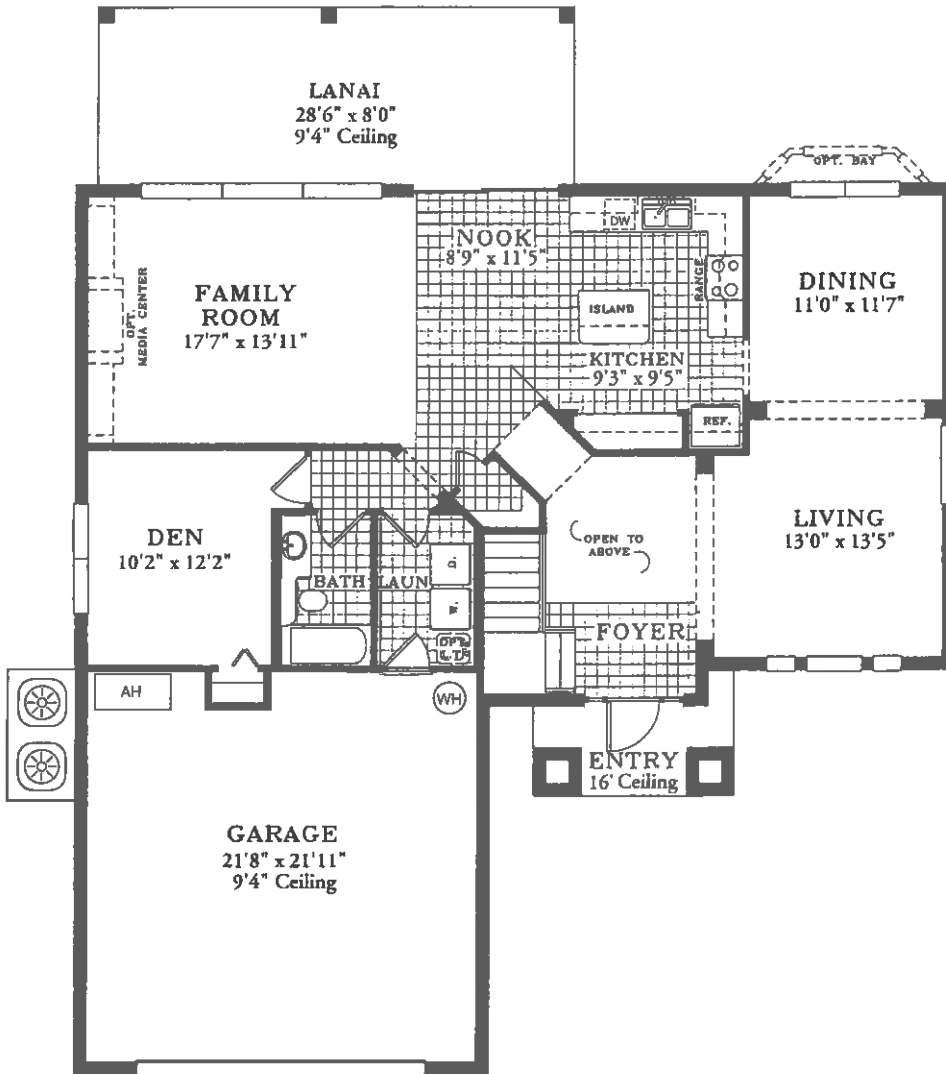


12/16/02

Wellington V with Bonus Room

Ground Floor

Upstairs



Width	50'0" FT.
Depth	58'0" FT.
Living 1st	1,400 SQ. FT.
Living 2nd	1,660 SQ. FT.
Total Living	3,060 SQ. FT.
Garage	520 SQ. FT.
Lanai	208 SQ. FT.
Entry	60 SQ. FT.
Total Area	3,848 SQ. FT.

First Floor Ceiling Height - 9'4"
Second Floor Ceiling Height - 8'0"

NOTE: B elevation 2nd floor living area is 1,720 Sq. Ft.



Oral Representations cannot be relied upon as correctly stating representations of the developer. For correct representations reference should be made to this brochure and to the documents furnished by the developer. All plans are artist renderings and all dimensions are approximate, and may vary with actual construction. Floor plans, window sizes and room sizes may vary based on the elevation selected. Landscaping on the rendering is shown only for display. Colonial Homes reserves the right to modify all plans and specifications without notice or obligation.