

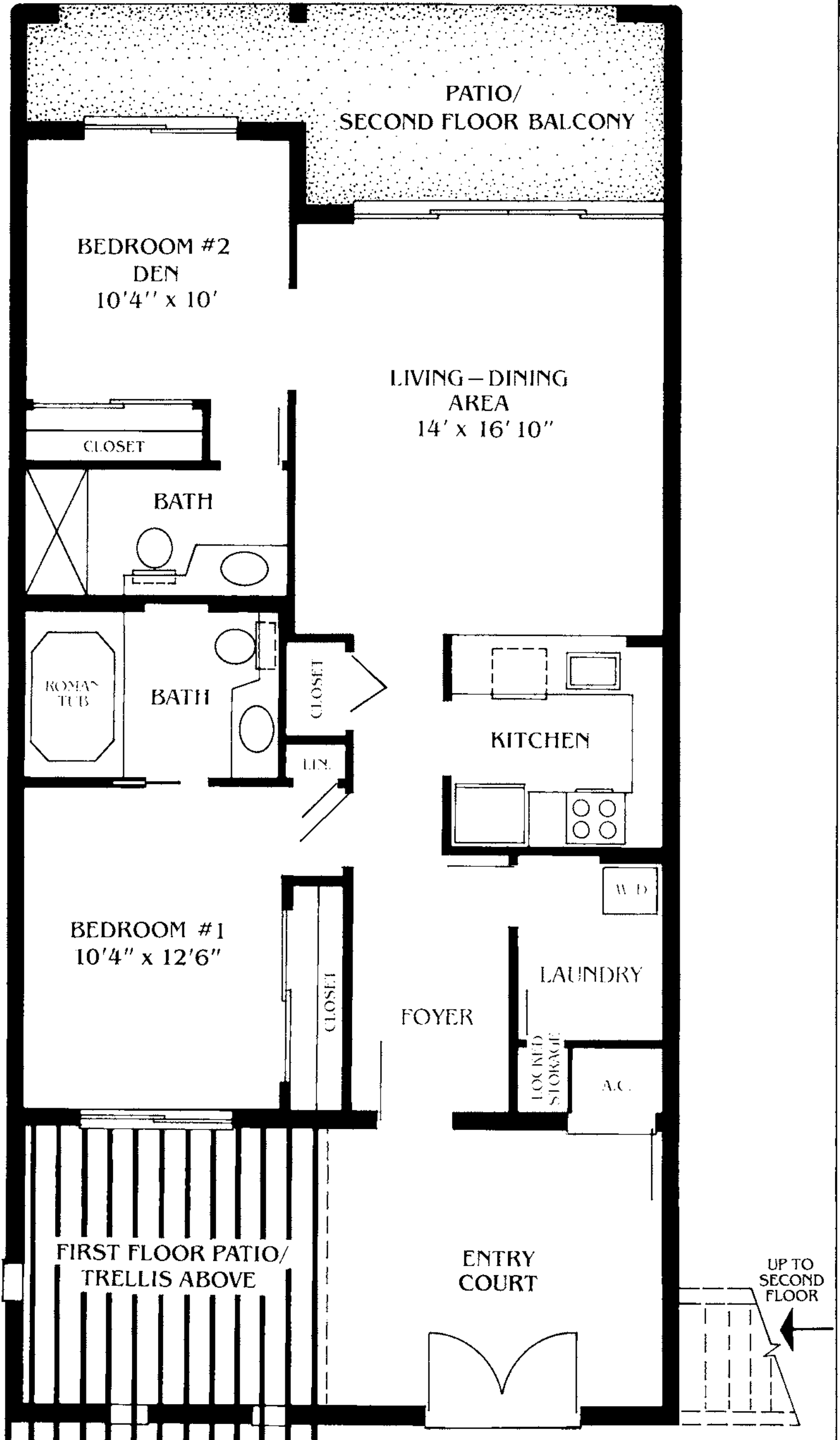
Floor Plans

These floor plans have been assembled as a resource for you. They may not be inclusive of every home in the community.

Please note that over time, owners may make modifications to spaces that may not be captured in these original floor plans.

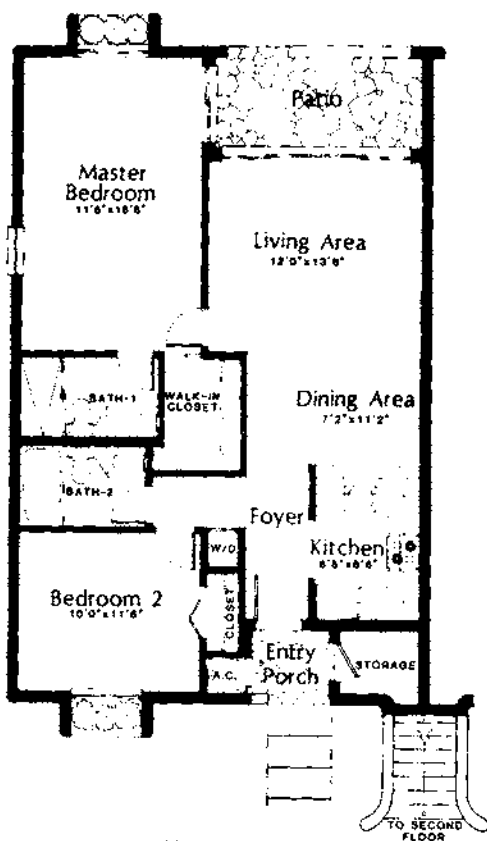
Renderings are not a guarantee of space measurement. Interested parties should verify through their own secured services.

TYPICAL FIRST AND SECOND FLOORS



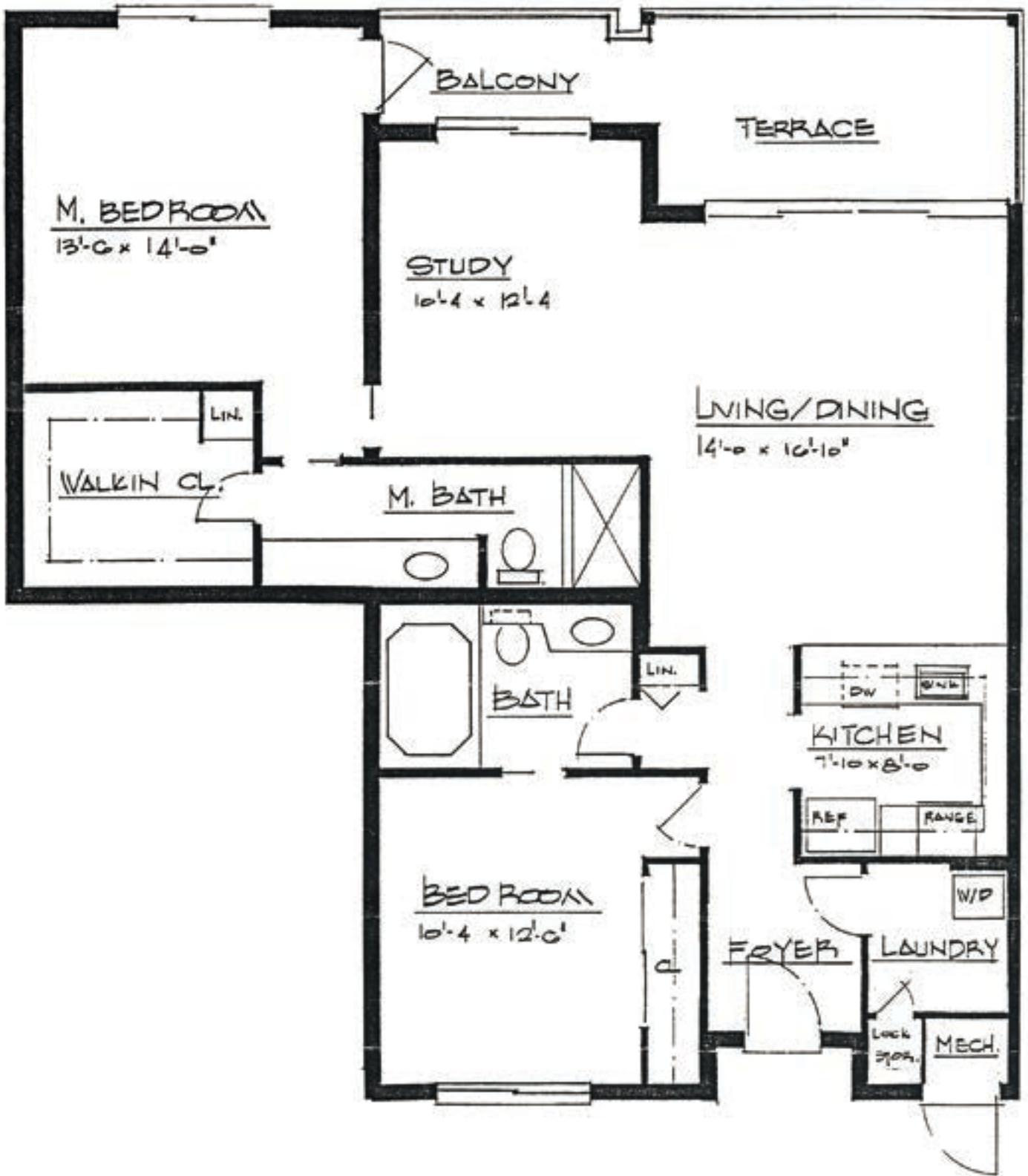
Floorplans

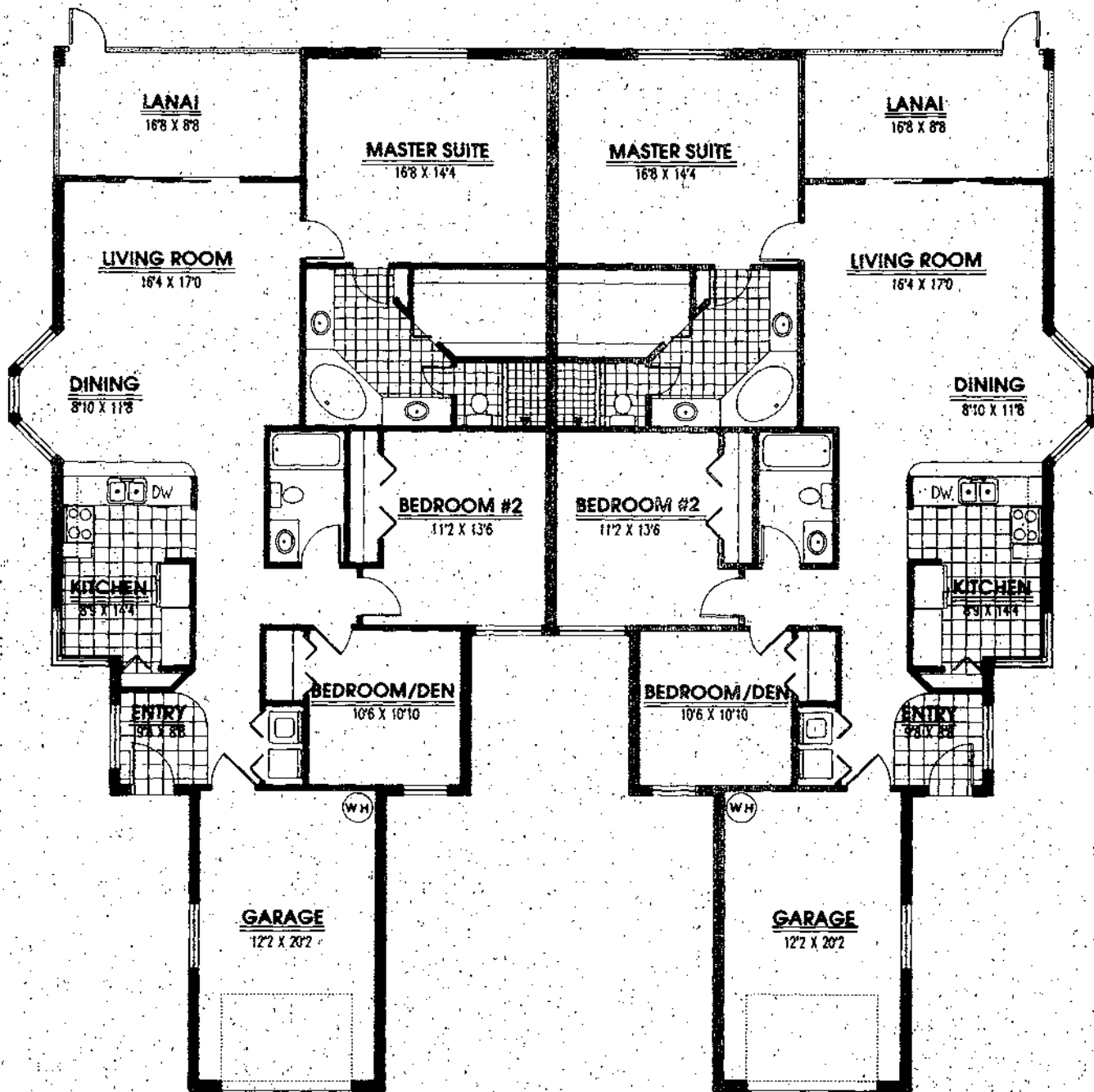
The Lakeside (First Floor Villas)



World Tennis Center

4800 Airport Road
Naples, Florida 33942
(813) 263-1900



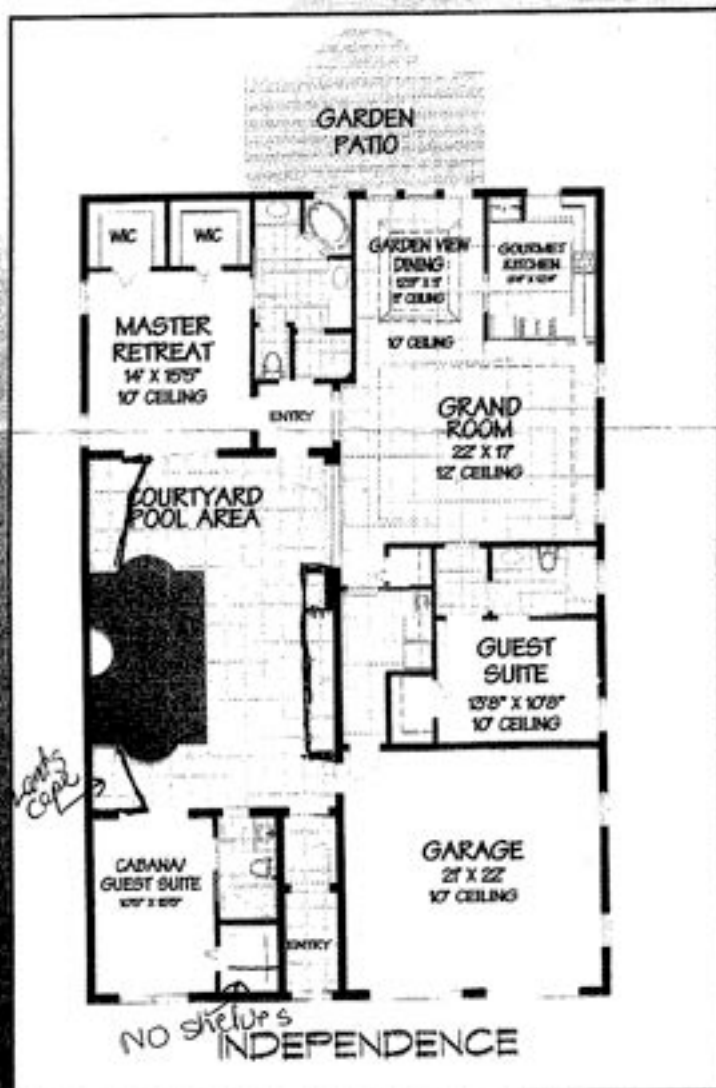


Floor Plan



Independence

LIVING	1662 SF
CABANA	287 SF
ENTRY	76 SF
GARAGE	462 SF
COURTYARD	633 SF
TOTAL	2487 SF

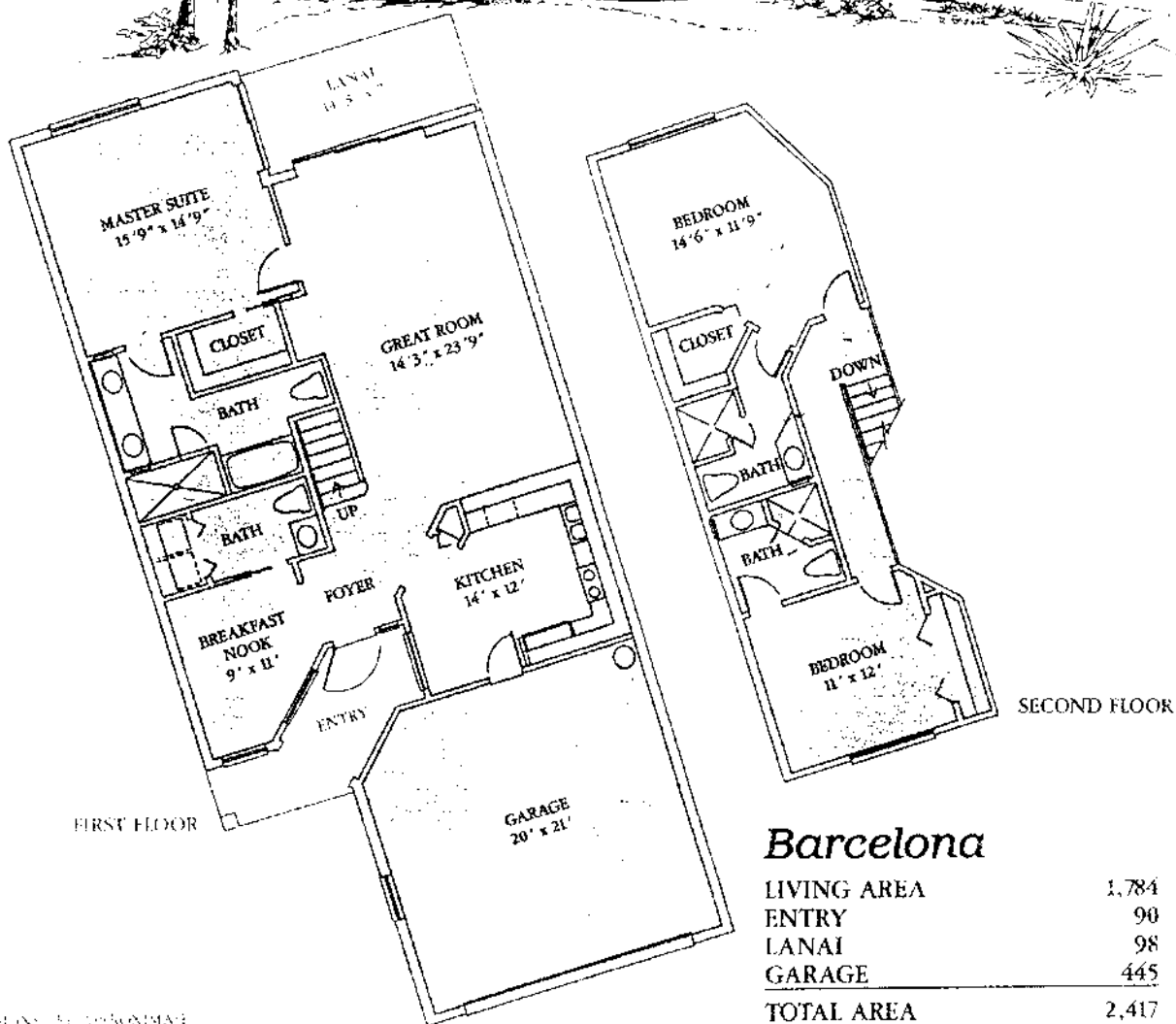


All renderings are interpretations of the artist and are subject to change without notice.

Dimensions and areas shown on floorplans are approximate and subject to change without notice.

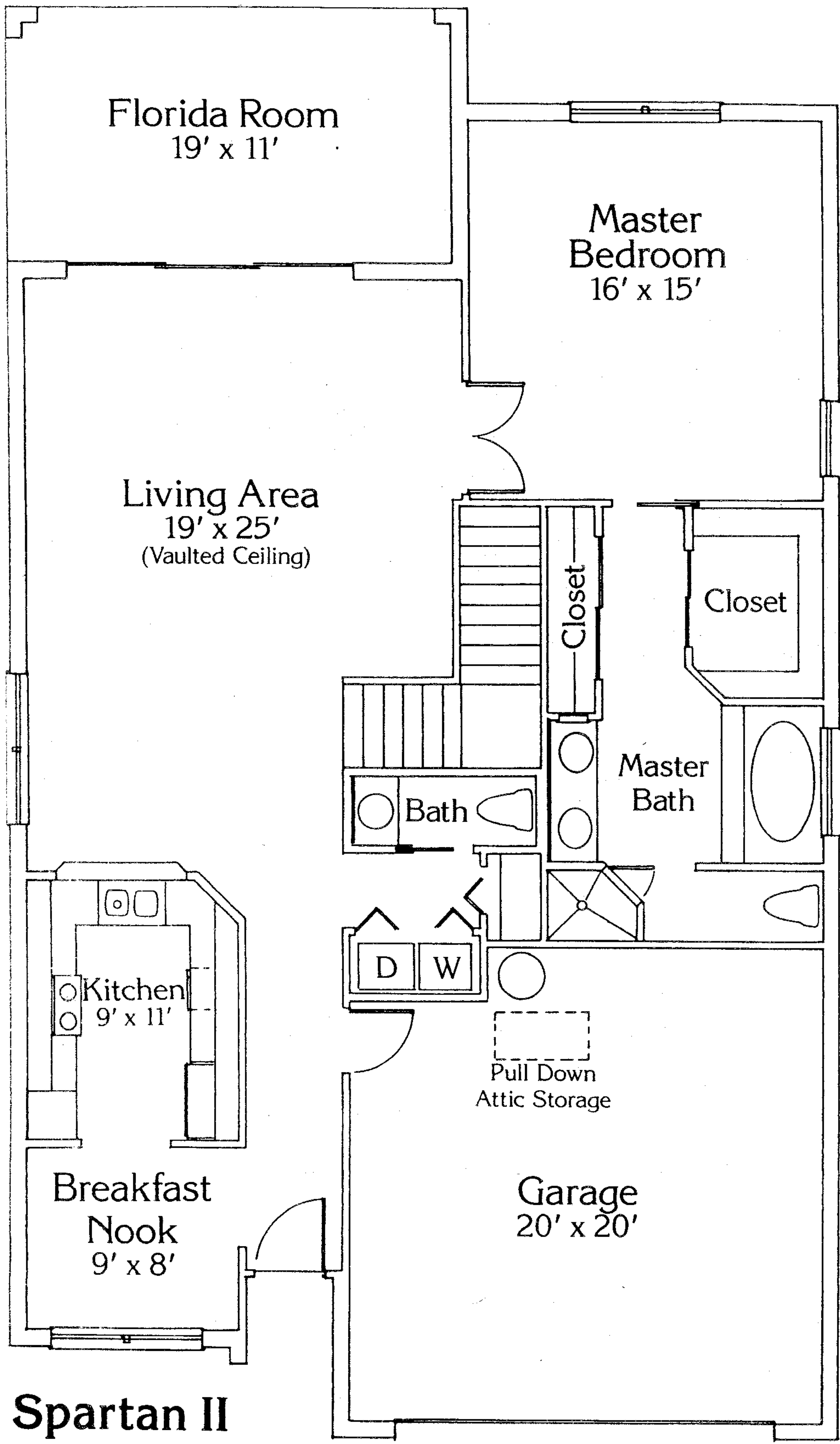
Villa Venezia

AT THE WORLD TENNIS CENTER

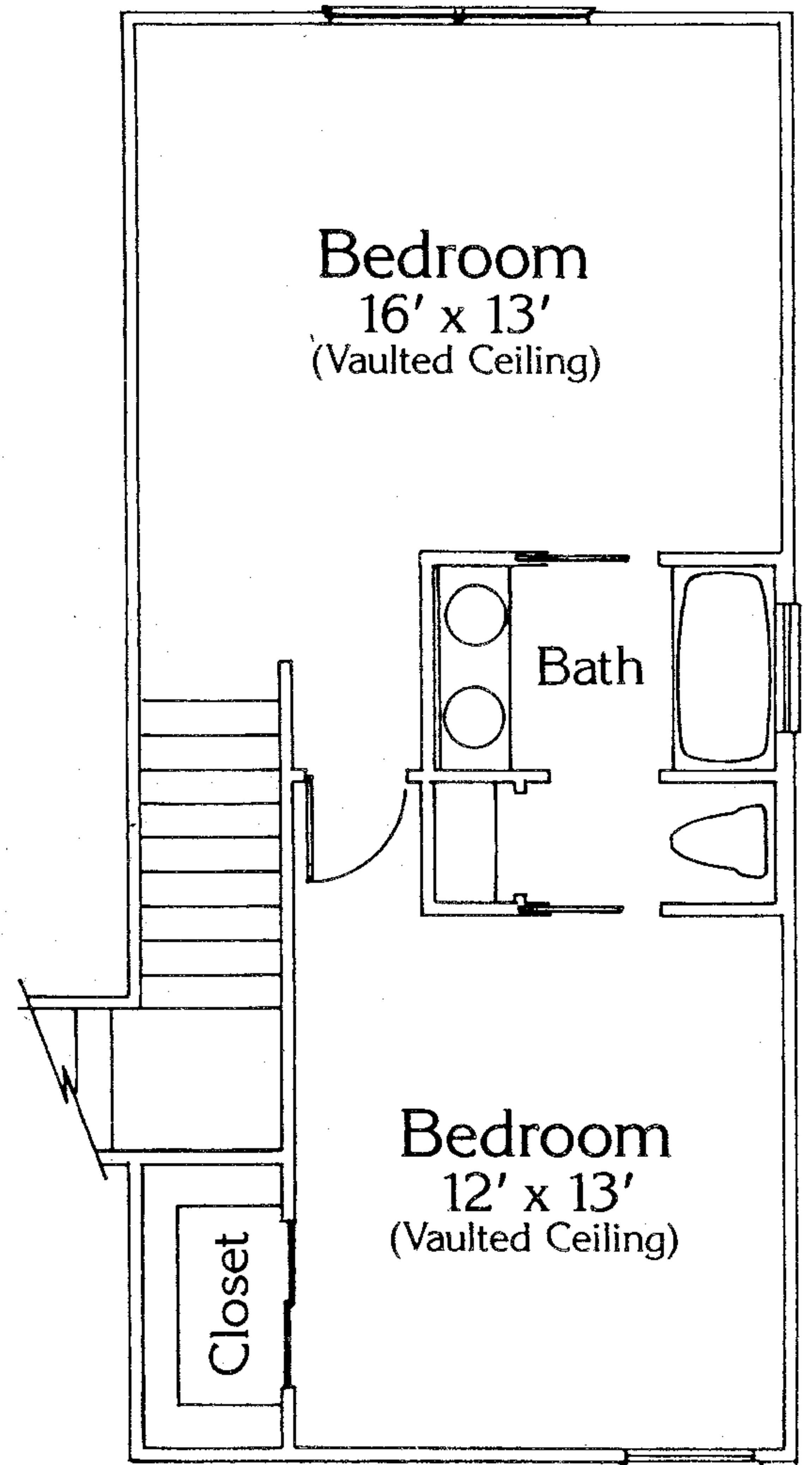


DEVELOPER: THE GARDEN CITY GROUP

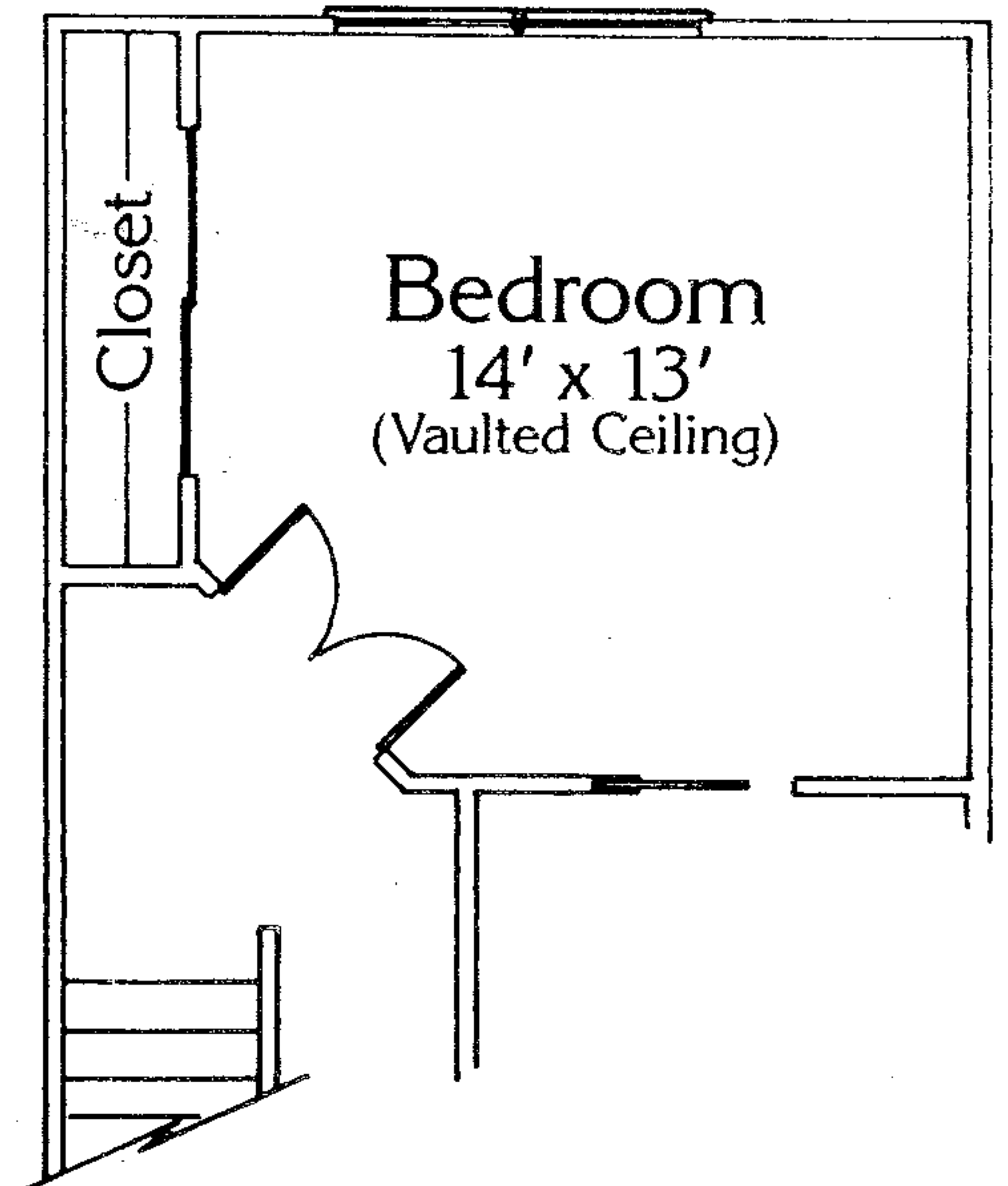
4800 AIRPORT ROAD • NAPLES, FLORIDA 34102
 813 263 7774



First Floor



Second Floor



Option

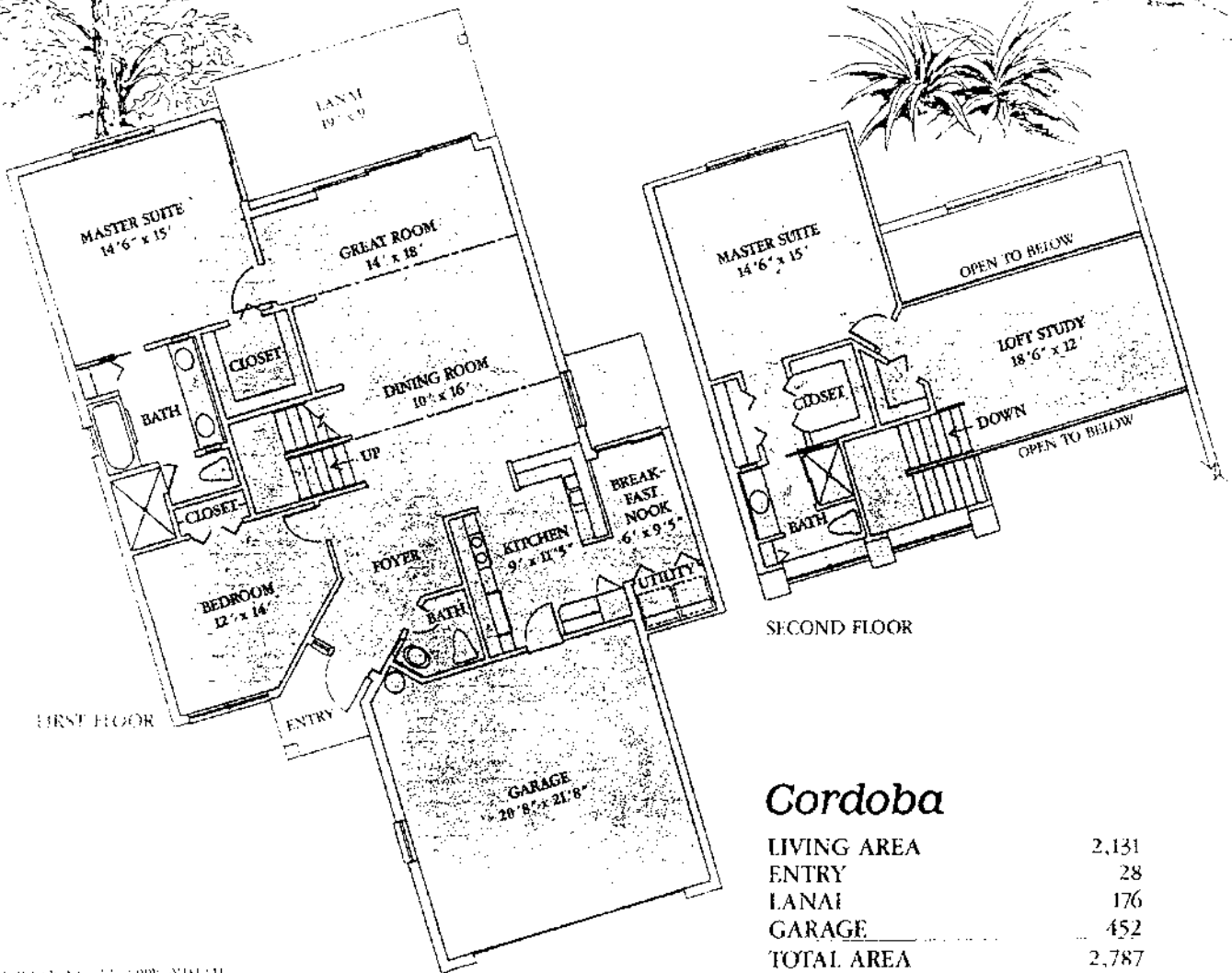
Spartan II

First Floor	1,355 Sq. Ft.
Second Floor	536 Sq. Ft.
Total Living*	1,891 Sq. Ft.
Entry	11 Sq. Ft.
Florida Room	202 Sq. Ft.
Garage	418 Sq. Ft.
Total	2,522 Sq. Ft.

ALL DIMENSIONS ARE APPROXIMATE AND ARE SUBJECT TO CHANGE

Villa Vizcaya

AT THE WORLD TENNIS CENTER



Cordoba

LIVING AREA	2,131
ENTRY	28
LANAI	176
GARAGE	452
TOTAL AREA	2,787

ALL DIMENSIONS ARE APPROXIMATE

4800 AIRPORT ROAD • NAPLES, FLORIDA 33942
813 263 774

