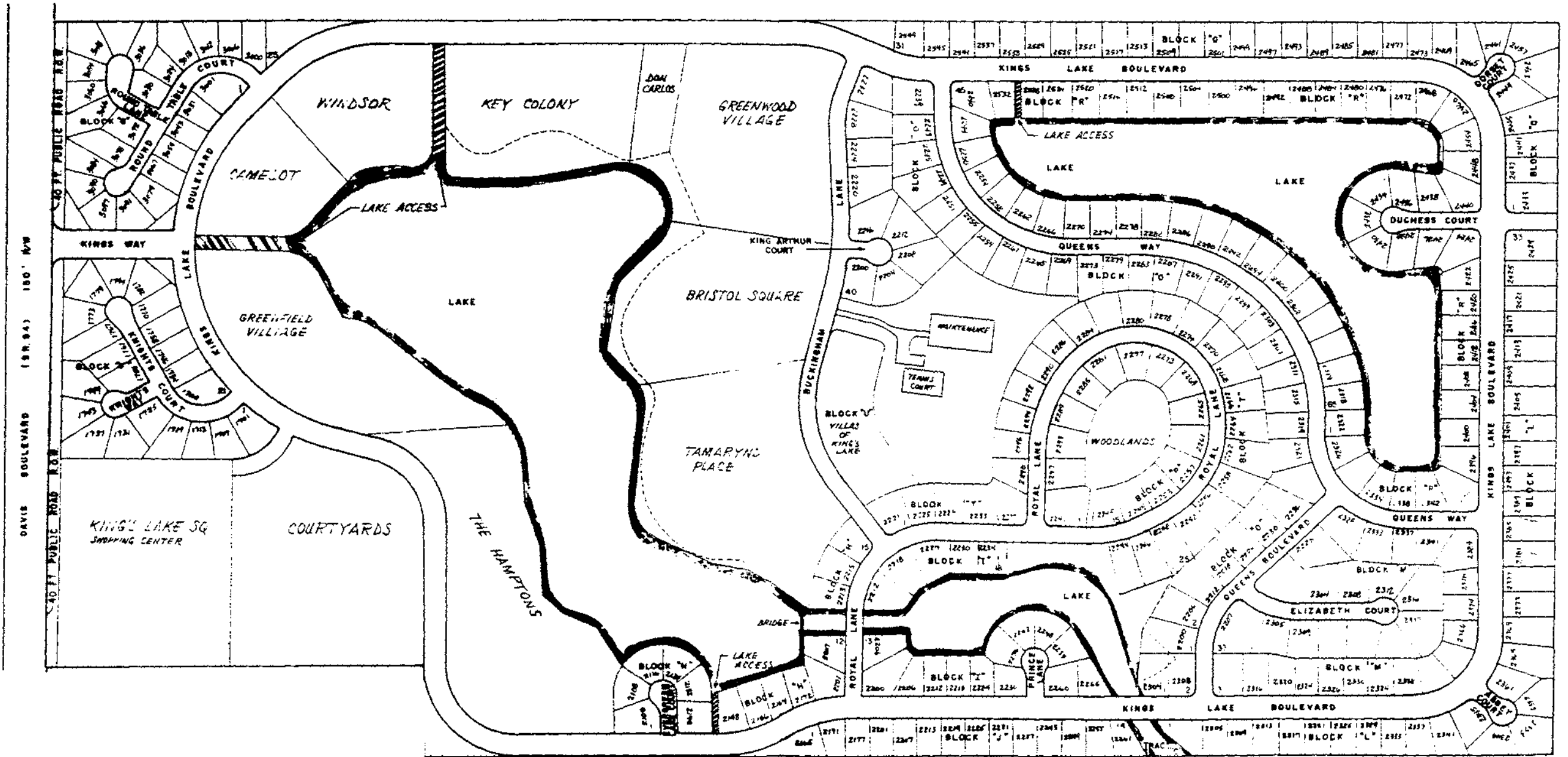


Floor Plans

These floor plans have been assembled as a resource for you. They may not be inclusive of every home in the community.

Please note that over time, owners may make modifications to spaces that may not be captured in these original floor plans.

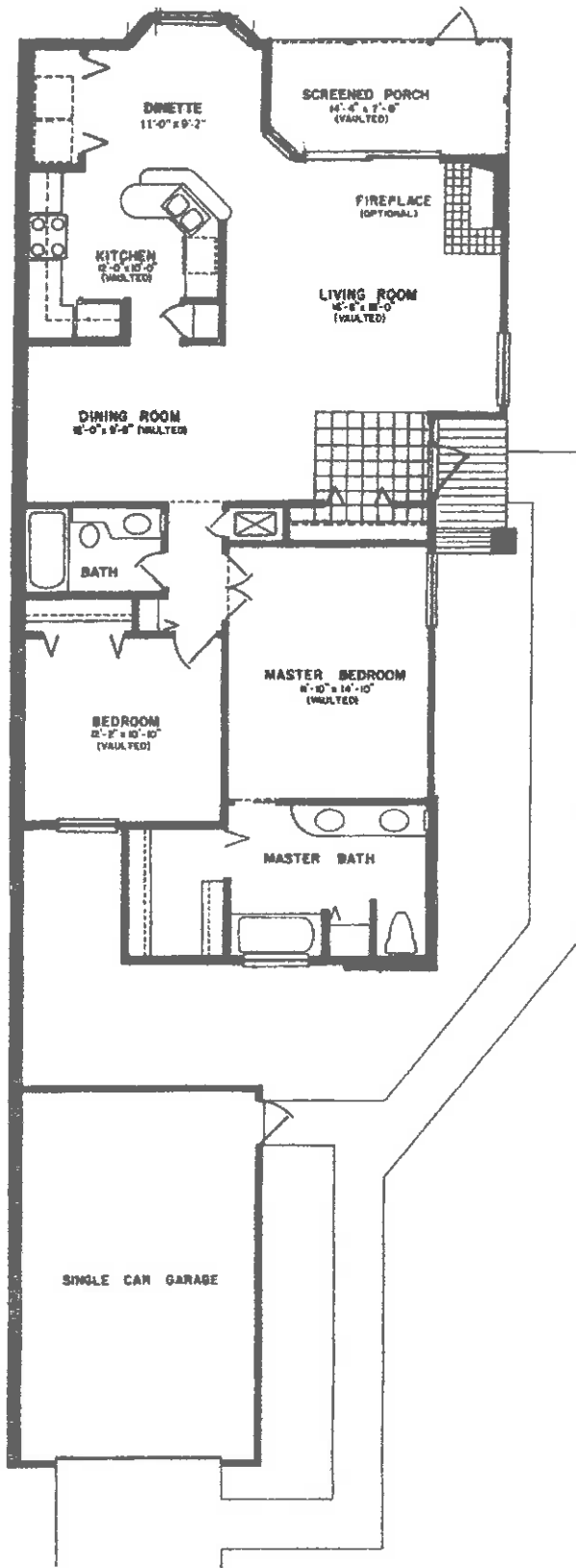
Renderings are not a guarantee of space measurement. Interested parties should verify through their own secured services.



Kings Lake

BRISTOL SQUARE AT KING'S LAKE ZONE II



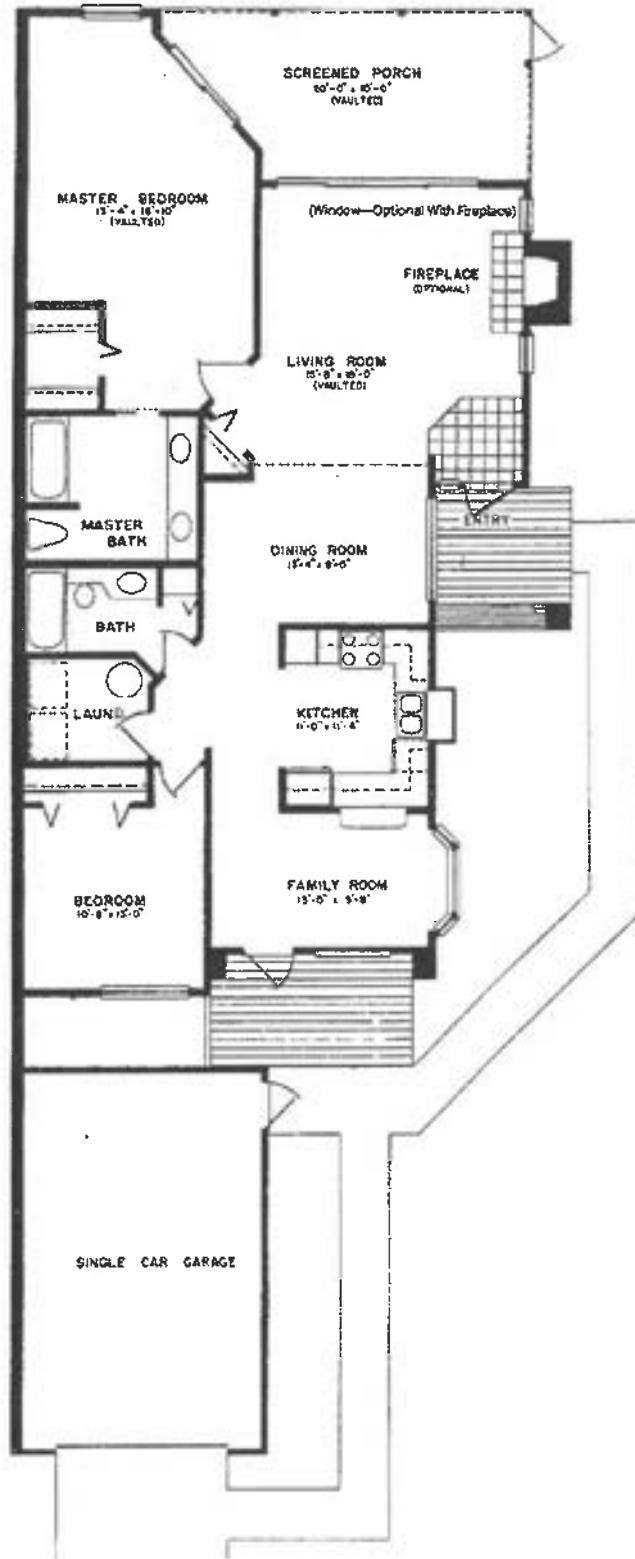


Designed for easy entertaining yet great privacy, the Ashley features a ceramic tiled entry that leads into the spacious living and dining room with vaulted ceilings. The large master bedroom suite has a walk-in closet and luxurious bath. The eat-in kitchen, washer-dryer hook ups and garage are only a few of the built-in features.

Floor Plan of offered villa does not have a fireplace

Dimensions Are Approximate. Floorplans May Also Vary.



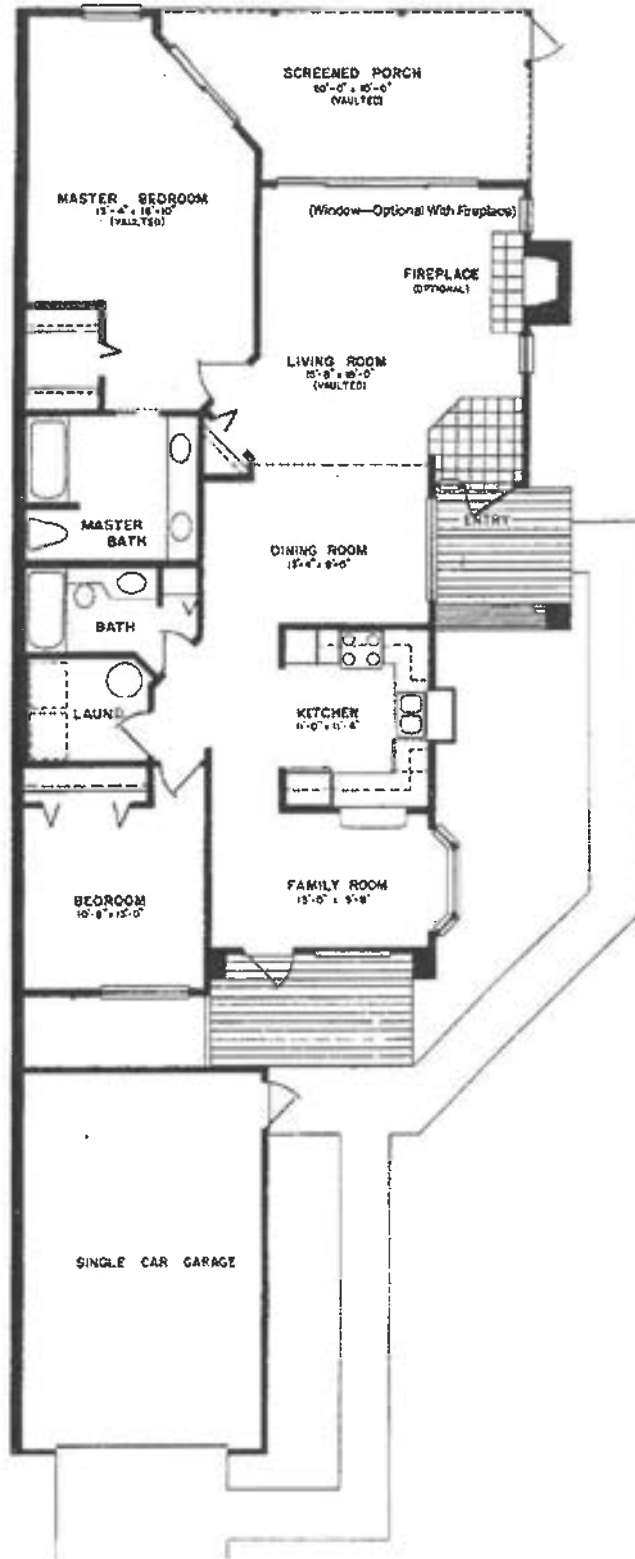


You enter through a private walkway into a tiled foyer with an expansive view across the vaulted ceiling living room and to the porch beyond.

The Brantford features a large country kitchen with windows and separate family area that is a pleasure to work in.

Dimensions Are Approximate. Floorplans May Also Vary





You enter through a private walkway into a tiled foyer with an expansive view across the vaulted ceiling living room and to the porch beyond.

The Brantford features a large country kitchen with windows and separate family area that is a pleasure to work in.

Dimensions Are Approximate. Floorplans May Also Vary

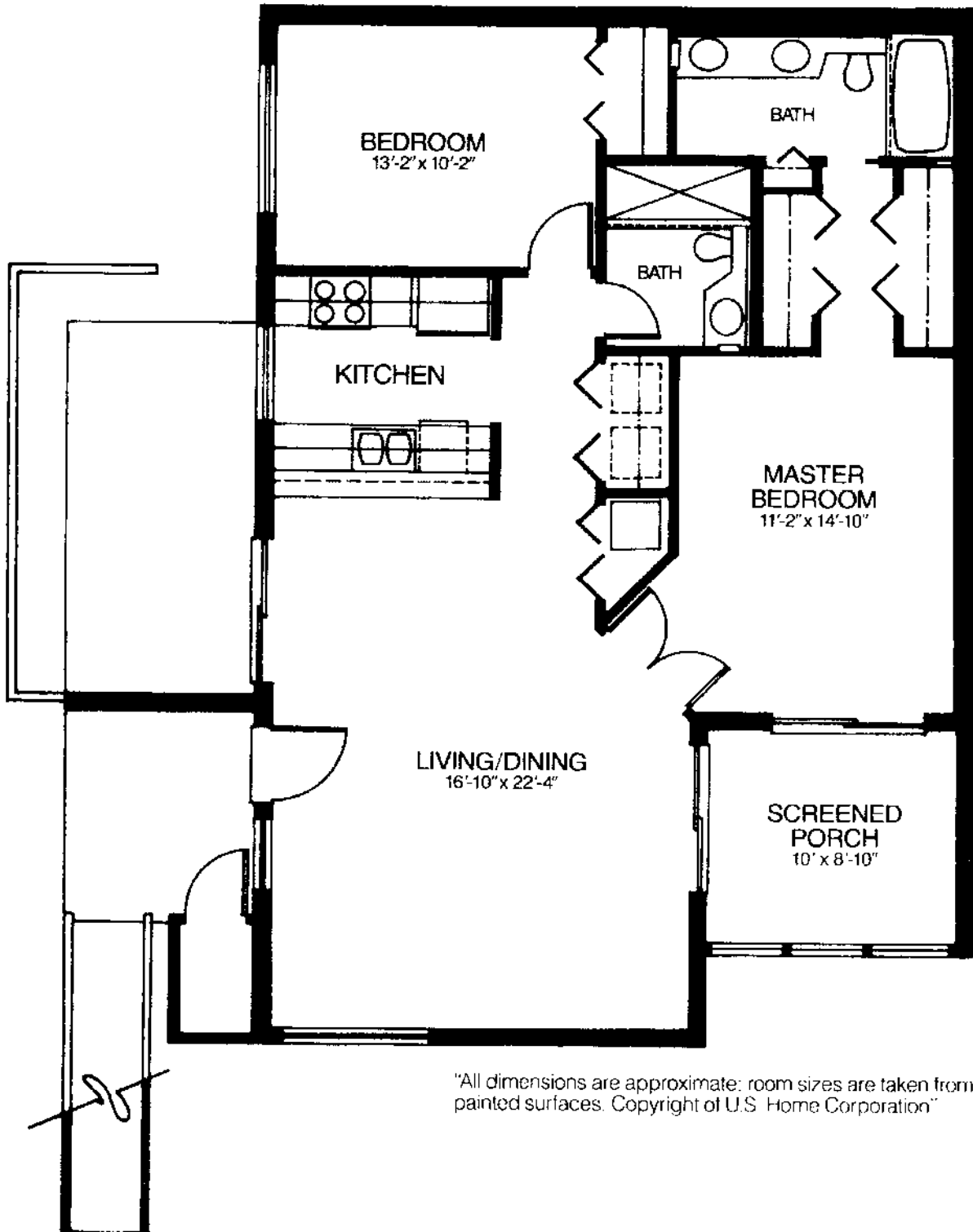


Essex

1,077 square feet
2 bedroom — 2 bath

2/2

"Rutenberg Homes reserves the right to change and/or alter materials, specifications, dimensions, design and prices without notice."



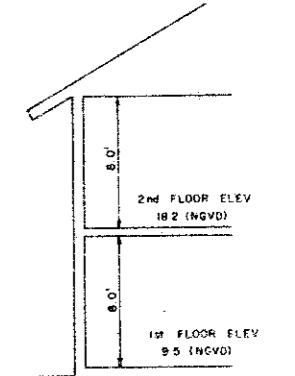
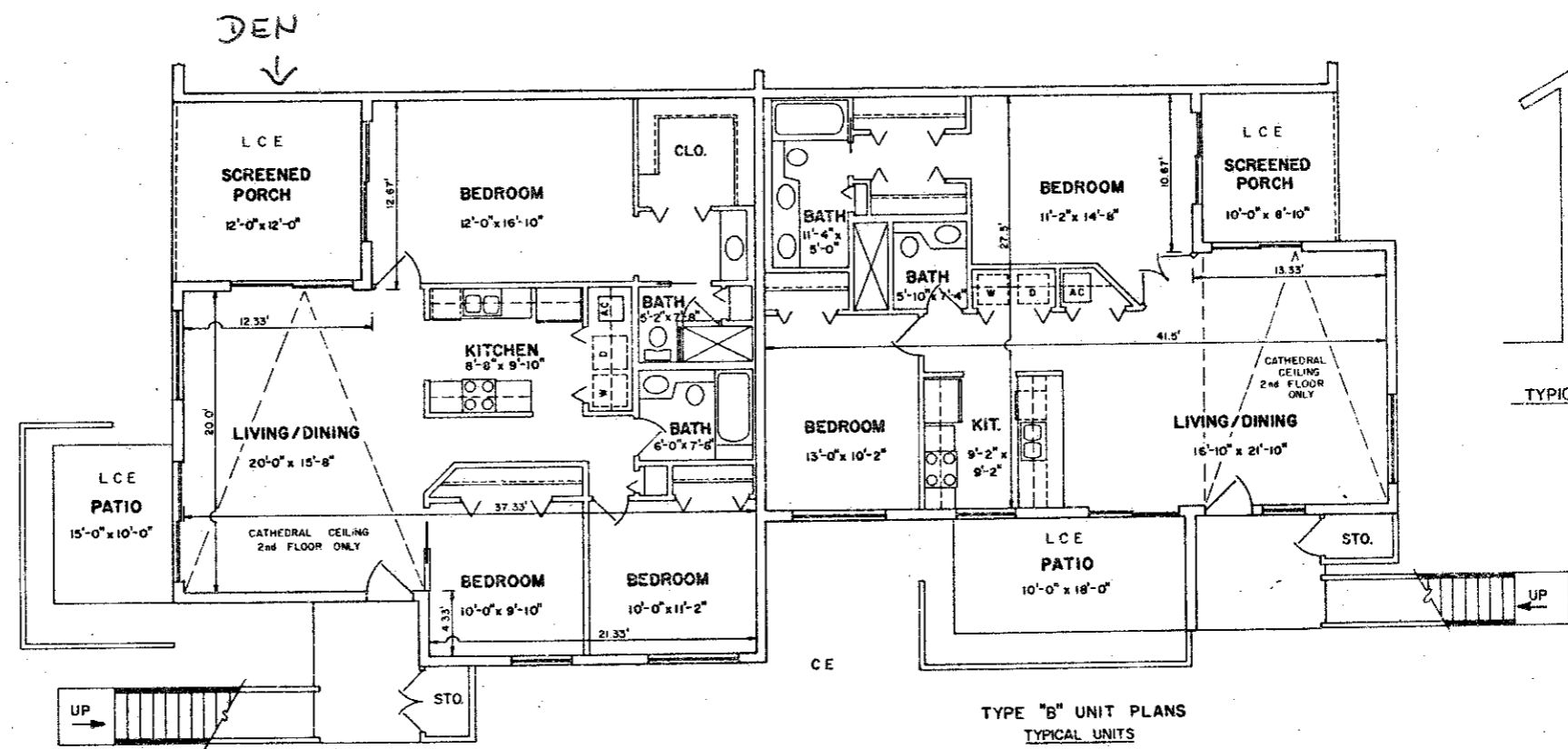
"All dimensions are approximate; room sizes are taken from painted surfaces. Copyright of U.S. Home Corporation"

"Oral representations and advertisements cannot be relied upon as correctly stating the representations of the developer. For correct representations, reference should be made to this brochure or this advertisement and the documents required by the Florida Statutes, Section 718.503, to be furnished by the developer to a buyer or lessee."



CAMELOT at KINGS LAKE,

A CONDOMINIUM



TYPICAL WALL SECTION
SCALE 1/4" = 1'-0"

NOTES
 CE DENOTES COMMON ELEMENT
 LCE DENOTES LIMITED COMMON ELEMENT

TYPE "D" UNIT PLANS
 TYPICAL UNITS

1st FLOOR	2nd FLOOR
7514	7518
7524	7528
7534	7538
7544	7548
7554	7558
7564	7568
7574	7578

TYPE "B" UNIT PLANS
 TYPICAL UNITS

1st FLOOR	2nd FLOOR
7512	7516
7522	7526
7532	7536
7542	7546
7552	7556
7562	7566
7572	7576

EXHIBIT "A"
 SHEET 9 OF 11

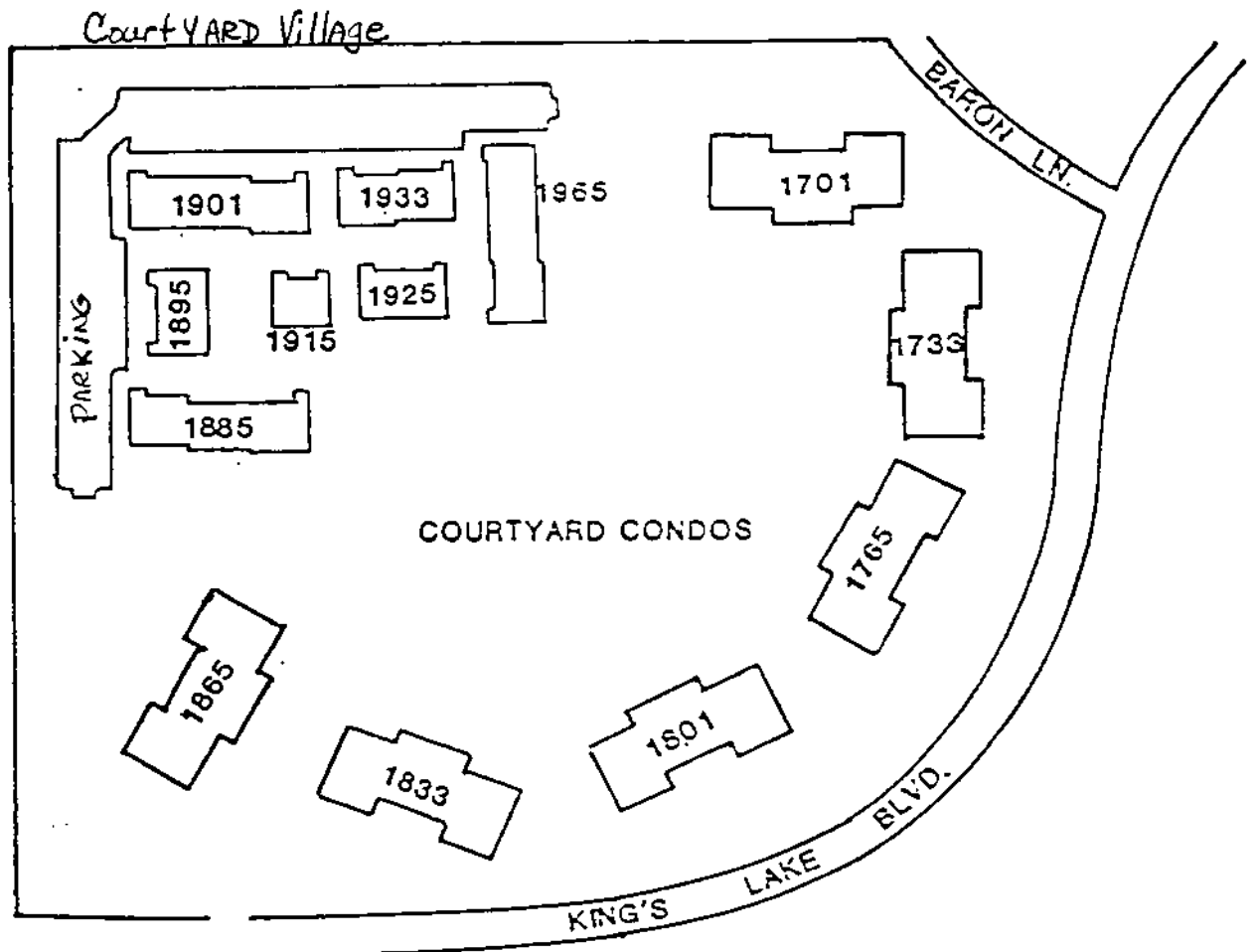
BELLAMY ENGINEERING, INC.
 852 FIRST AVE., SOUTH, TAMPA, FLORIDA

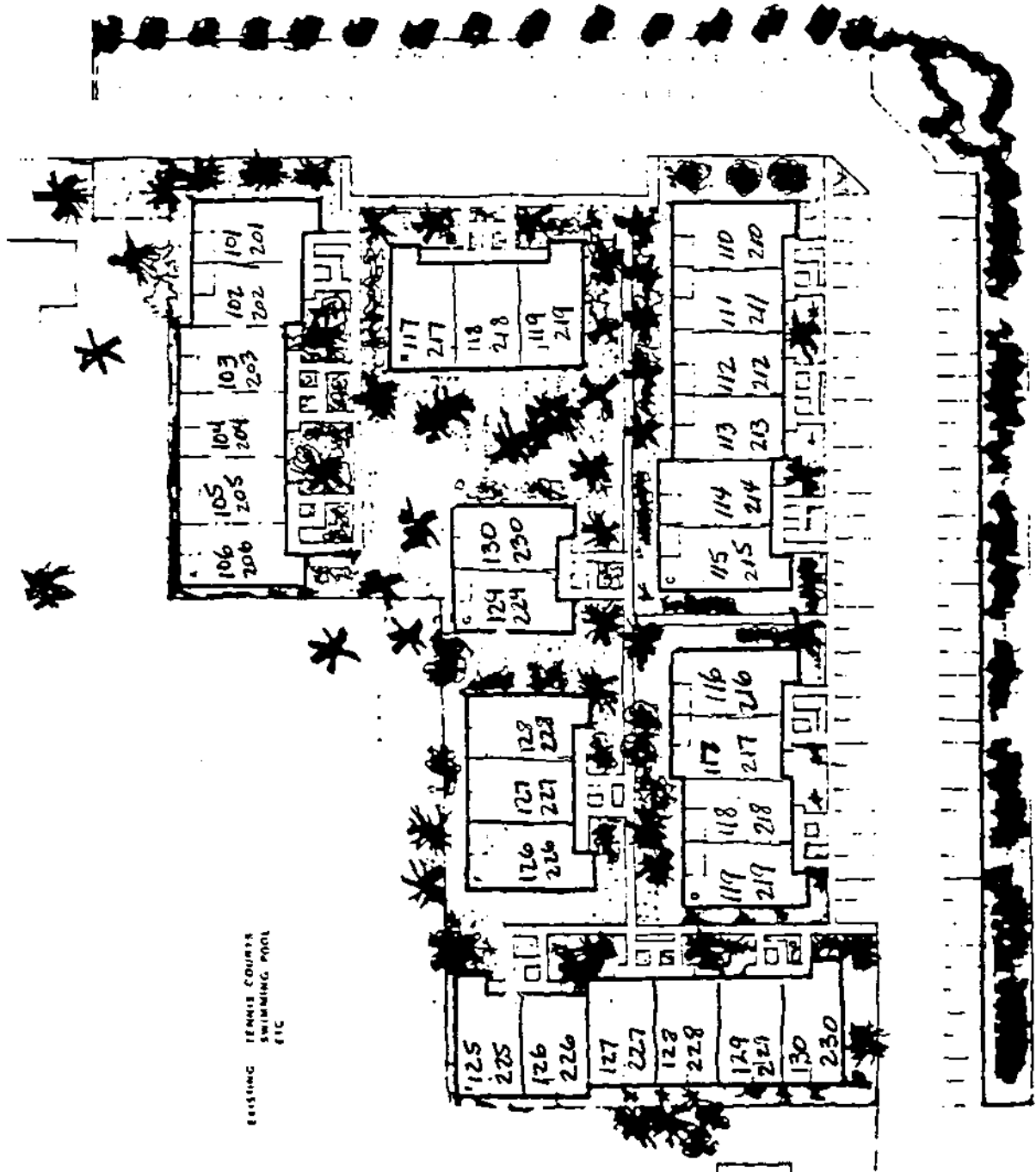
SCALE: 1/4" = 1'-0" APPROVED BY: _____
 DATE: AUG. 1988 DRAWN BY: _____

FOR: **CAMELOT AT KINGS LAKE**
RUTENBERG HOMES, INC. 81-502-16

COURTYARD AT KING'S LAKE
ZONE II-2

COURTYARD CONDOS
COURTYARD VILLAGE





EXISTING TENNIS COURTS
SWIMMING POOL
ETC

Courtyard Village
AT Kings Lake
Courtyard Way

The Site Plans

THE COURTYARD CONDOMINIUMS.

THE ALEXANDER.

Two Bedrooms. Two Baths.

Air conditioned living area: 1,132 square feet.

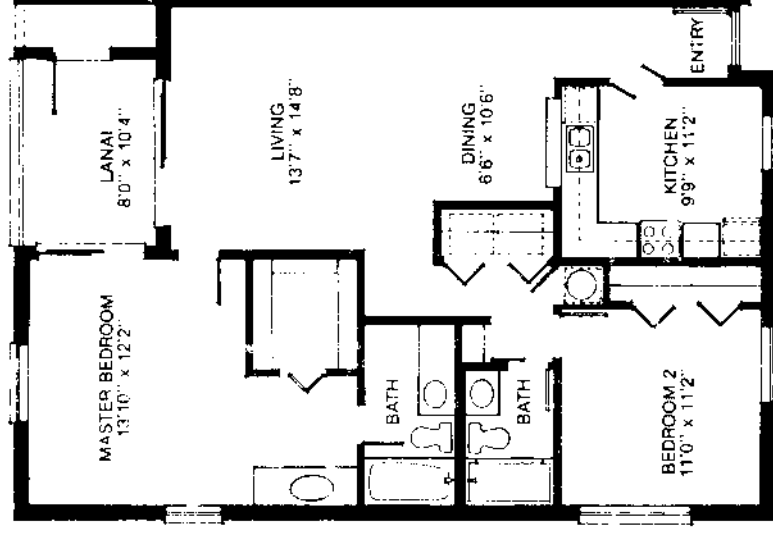
Screened lanai: 83 square feet.

Storage: 29 square feet.

Entry: 8 square feet.

Total area: 1,252 square feet.

Alexander, King of Macedonia, 356 to 323 B.C.



THE BALDWIN.

Two Bedrooms. Two Baths.

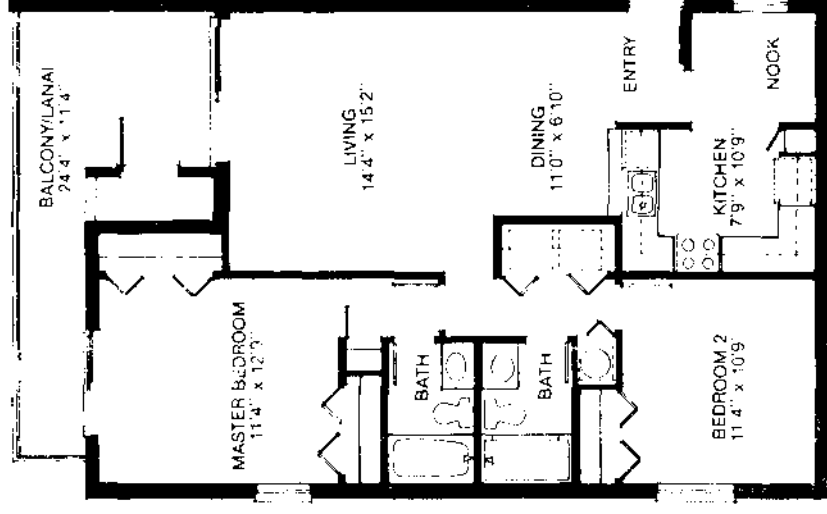
Air conditioned living area: 1,072 square feet.

Screened lanai: 156 square feet.

Storage: 22 square feet.

Total area: 1,250 square feet.

Baldwin. Crusader and the first King of Jerusalem. A.D. 1058 to 1118.



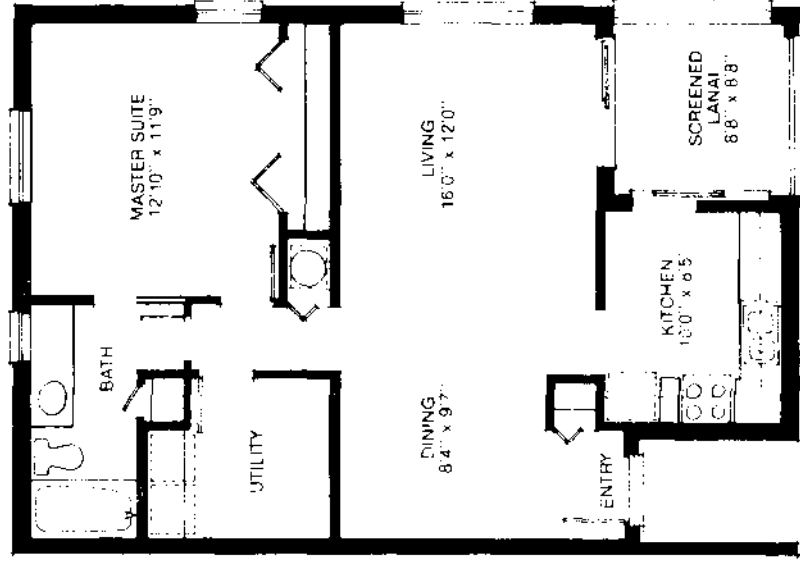
THE CHARLEMAGNE.

One Bedroom. One Bath.

Air conditioned living area: 815 square feet.
Screened lanai: 75 square feet.

Total area: 890 square feet.

Charlemagne. "Charles the Great." King of the Franks. A.D. 742 to 814.

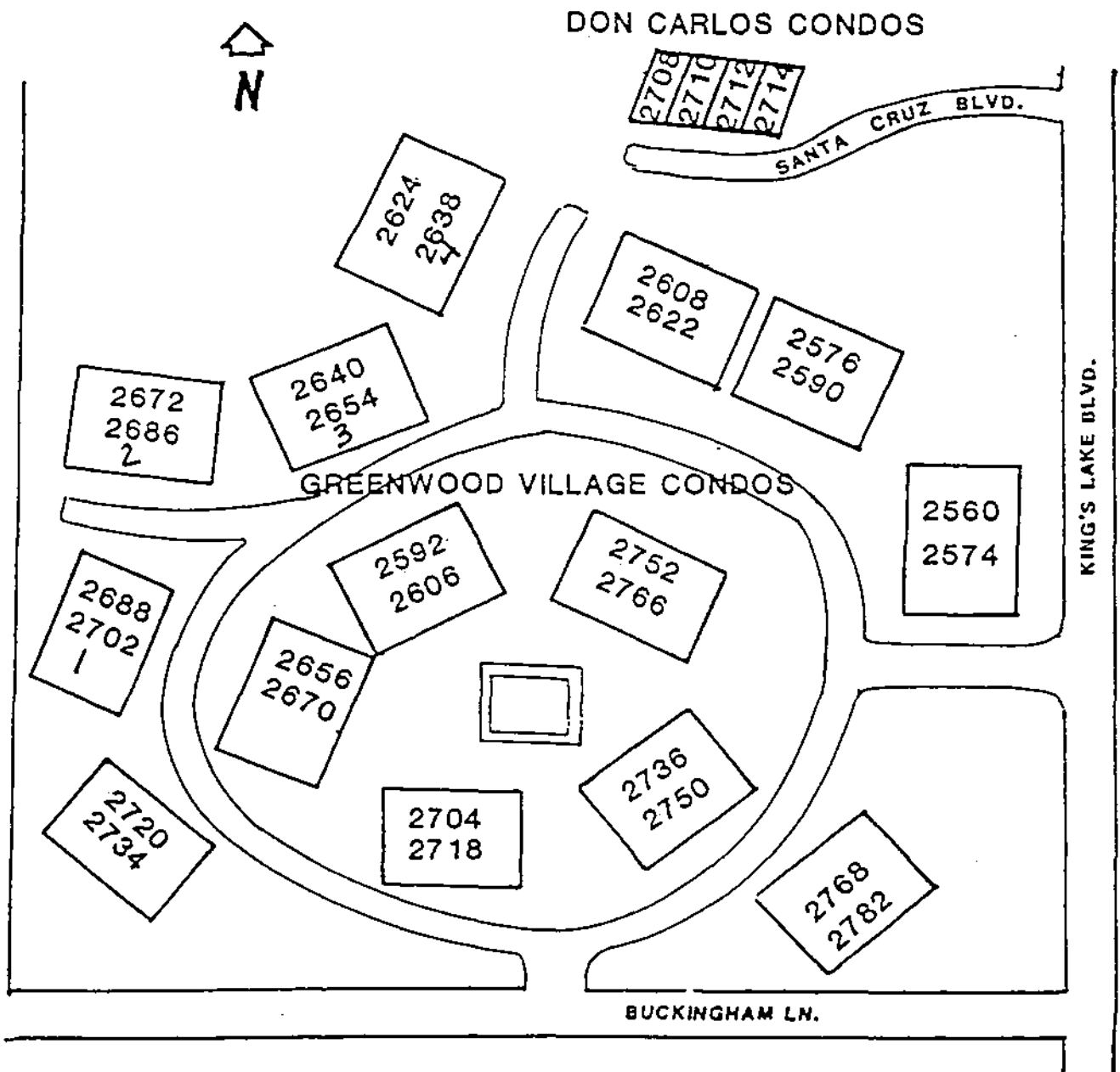


Note: All dimensions approximate. Typical units may vary slightly because of construction details or as deemed necessary by the architect.

King's Lake Zone 11-2

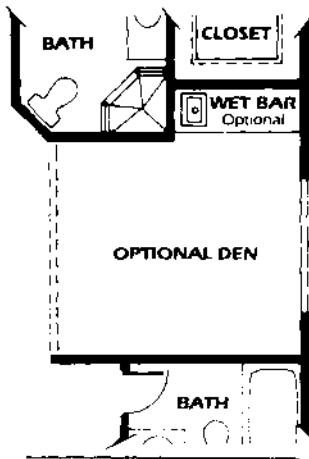
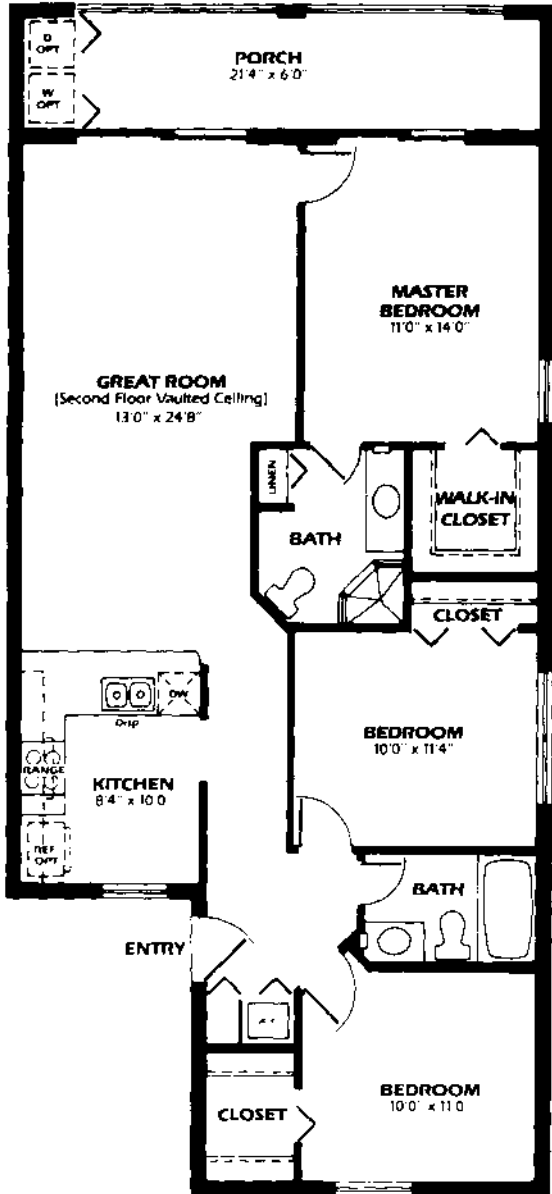
DON CARLOS CONDOS

GREENWOOD VILLAGE CONDOS



CYPRESS

3 bedroom/2 bath



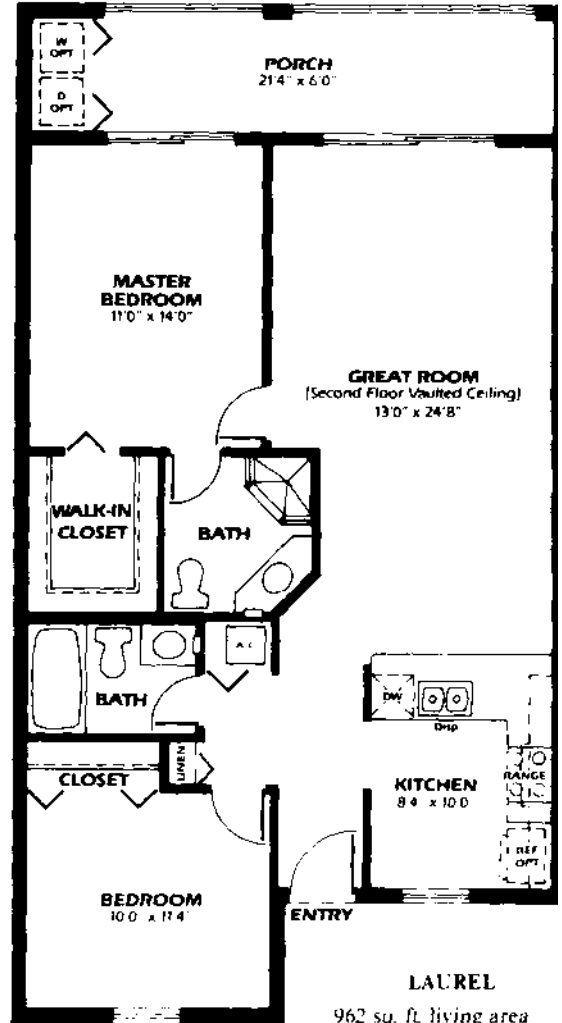
CYPRESS

1126 sq. ft. living area
150 sq. ft. porch

1276 sq. ft. total

LAUREL

2 bedroom/2 bath



LAUREL

962 sq. ft. living area
150 sq. ft. porch

1112 sq. ft. total

All sizes, dimensions, and features subject to change without notice.

GENERAL:

- Concrete block construction (CBS)
- Architectural fiberglass shingles
- Individual and private steel entry doors
- Individual central air conditioning and heating
- Covered stairwells
- Each spacious master suite includes a walk-in closet and private bath
- Second story apartments feature vaulted ceilings
- Each residence at Greenwood Village is designed with a rear porch.
- Choice of carpeting colors thru out
- Covered parking
- Washer/Dryer hook-ups

KITCHEN:

- Airy kitchens designed to be functional and efficient with custom mica cabinets
- Dependable Whirlpool appliances including: continuous self-clean range with hood fan, dishwasher and double stainless steel sink with disposal, and refrigerator
- Large pass-thru-counter to the living/dining areas.
- Cove style lighting.
- Choice of fine durable vinyl flooring in the kitchen.

BATH:

- Each bath has been designed for efficiency and comfort.
- Custom mica cabinets.
- Ample lighting installed in every bath
- Bath includes either an enamele steel tub with ceramic tile surround or fully enclosed ceramic and glass shower stall.
- Plate glass mirrors and medicine cabinets in every bath
- Your choice of lovely vinyl floor in bath areas.

ORAL REPRESENTATIONS CANNOT BE RELIED UPON AS CORRECTLY STATING THE REPRESENTATIONS OF THE DEVELOPER. FOR CORRECT REPRESENTATIONS, REFERENCE SHOULD BE MADE TO THE BROCHURE AND DOCUMENTS REQUIRED BY SECTION 718.503, FLORIDA STATUTES, TO BE FURNISHED BY A DEVELOPER.

CYPRESS

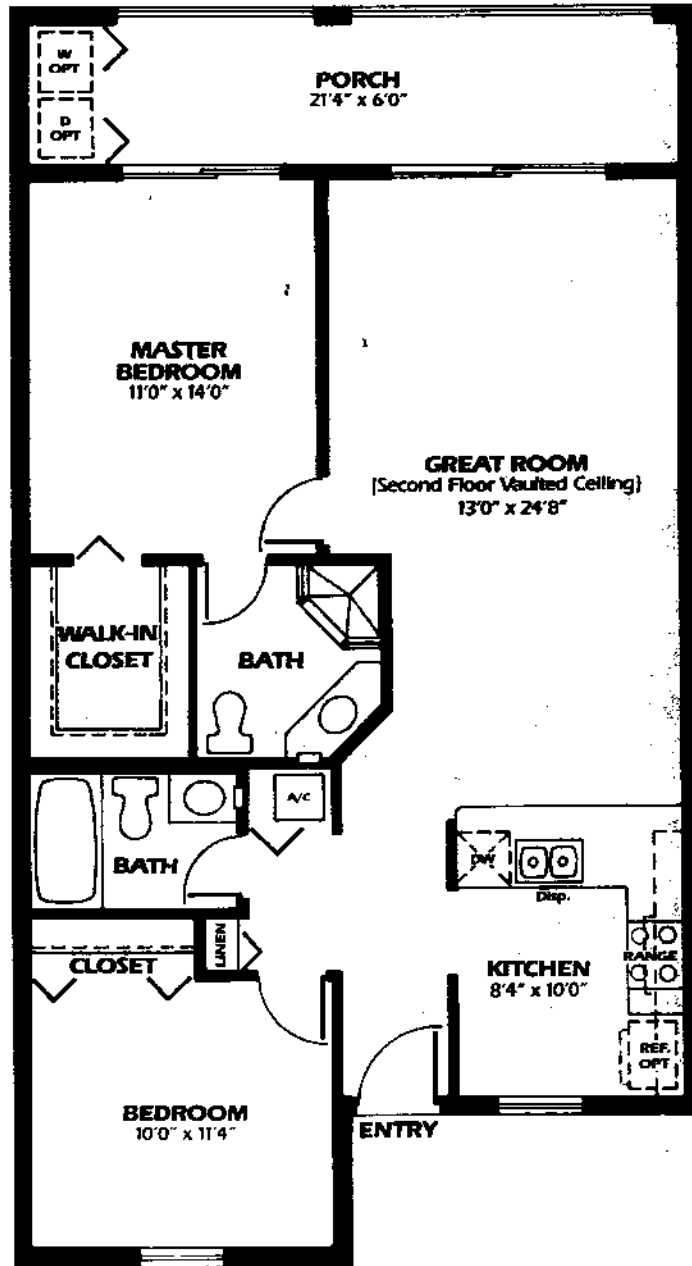
3 bedroom/2 bath



All dimensions, features & specifications are approximate & subject to change without notice.

LAUREL

2 bedroom/2 bath

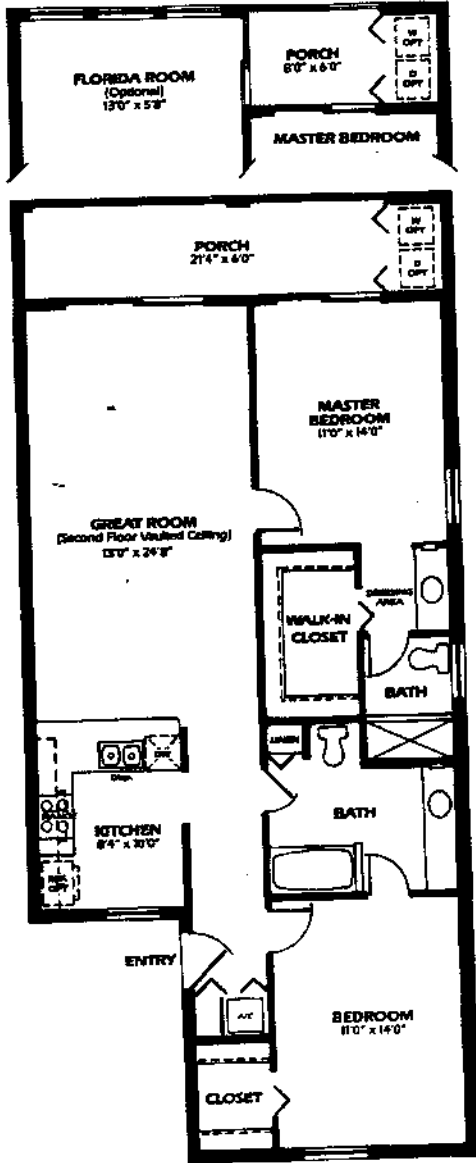


LAUREL
 962 sq. ft. Living Area
 150 sq. ft. Porch
 1112 sq. ft. TOTAL

All dimensions, features & specifications are approximate & subject to change without notice.

EVERGREEN

2 bedroom/2 bath



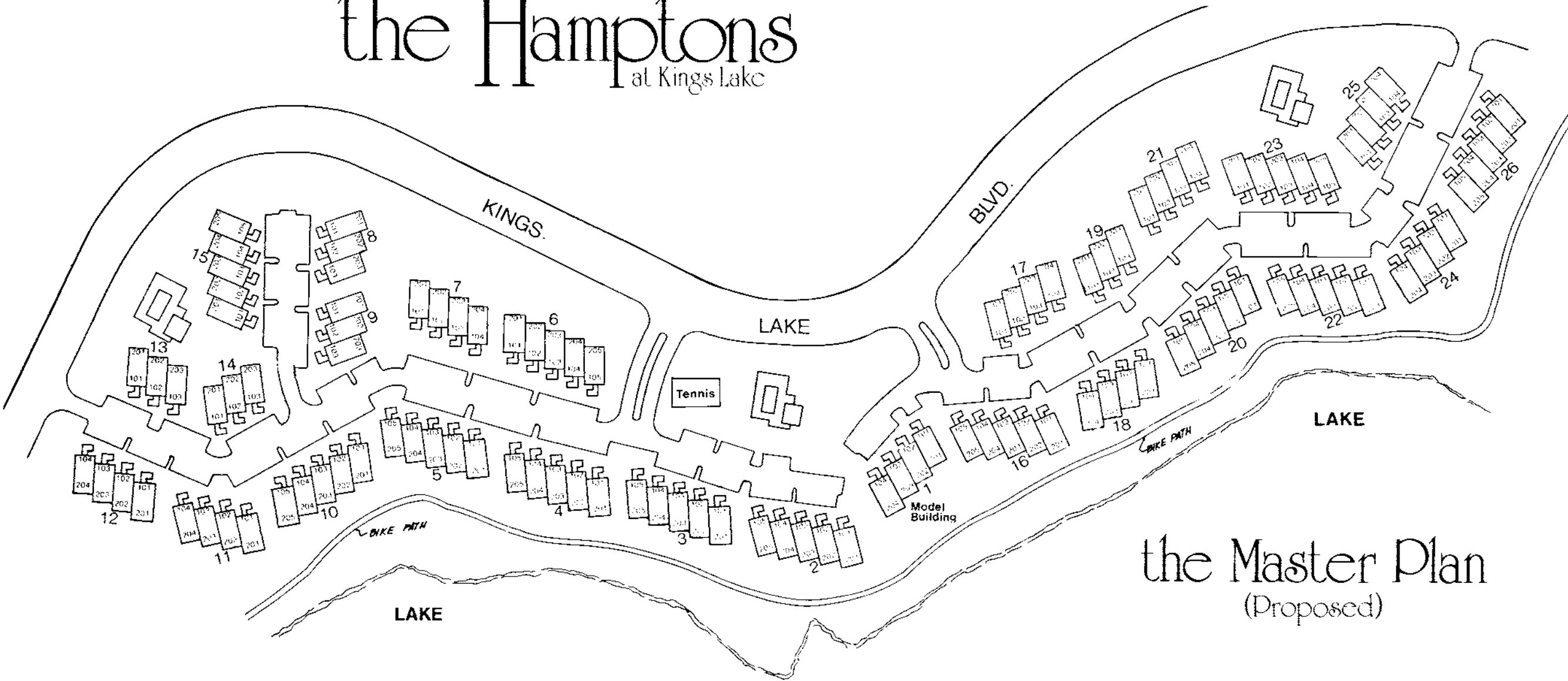
EVERGREEN II
 1126 sq. ft. Living Area
 82 sq. ft. Florida Room
 68 sq. ft. Porch
 1276 sq. ft. TOTAL

EVERGREEN I
 1126 sq. ft. Living Area
 150 sq. ft. Porch
 1276 sq. ft. TOTAL

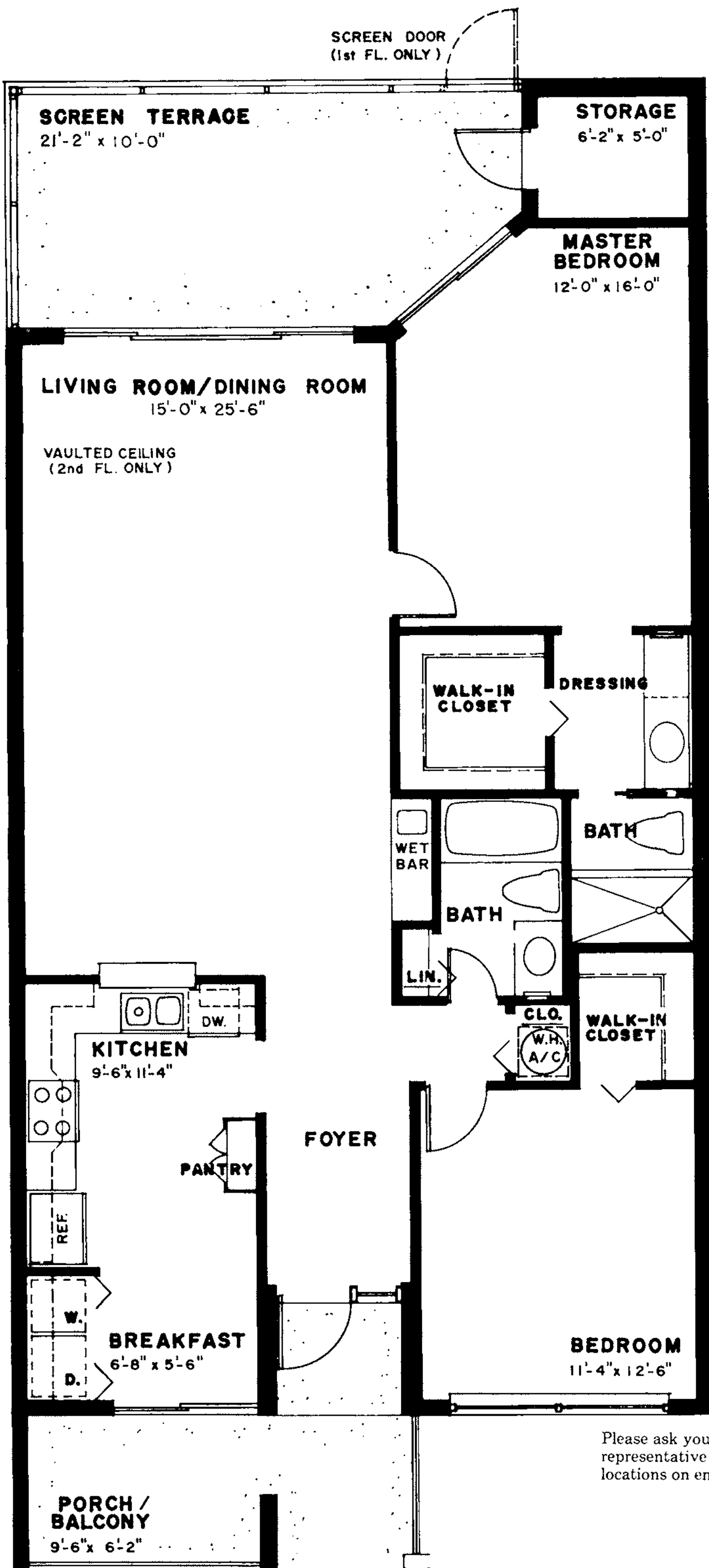
the Site Plan

the Hamptons

at Kings Lake



the Master Plan
(Proposed)



ALL ROOM SIZES ARE APPROXIMATE

Please ask your representative for window locations on end units.

the Aberdeen

2 Bedroom, 2 Bath

1,312 Sq. Ft. Living
 210 Sq. Ft. Terrace
 1,522 Sq. Ft. Total

QUALITY IS EVERYWHERE
 AT THE HAMPTONS

*THE PLANS. THE DESIGN.
 CONSTRUCTION. APPLIANCES.
 MATERIALS. Down to the very last detail,
 everything at THE HAMPTONS is done to a
 standard of excellence.*

YOUR KITCHEN:

- Spacious breakfast area
- Frost-free refrigerator/freezer
- Built-in dishwasher
- Self cleaning double oven/range
- Sound insulated disposal
- Double compartment stainless steel sink
- No wax vinyl flooring... choice of decorator patterns
- Custom designed formica cabinets
- Large pantry closet
- Cove lighting
- Private patio/balcony from kitchen

YOUR BATHROOMS:

- Deluxe single lavatory and trim
- Separate dressing area
- Cultured marble vanities
- Air conditioning in both bathrooms
- Ceramic tile floors
- Floor to ceiling tile in shower and tub areas

YOUR APARTMENT RESIDENCE:

- Sliding glass doors to private 10-foot by 21-foot screened-in terrace
- Vaulted ceiling (second floor only)
- Large private storage room
- Wall to wall carpeting in choice of decorator colors
- Excellent closet space
- Large walk-in closet in master suite
- Ventilated shelving in all closets
- Cablevision available
- Pre-wired telephone outlets
- Separate utility closet with washer & dryer hook-up
- Smoke detectors

EACH BUILDING:

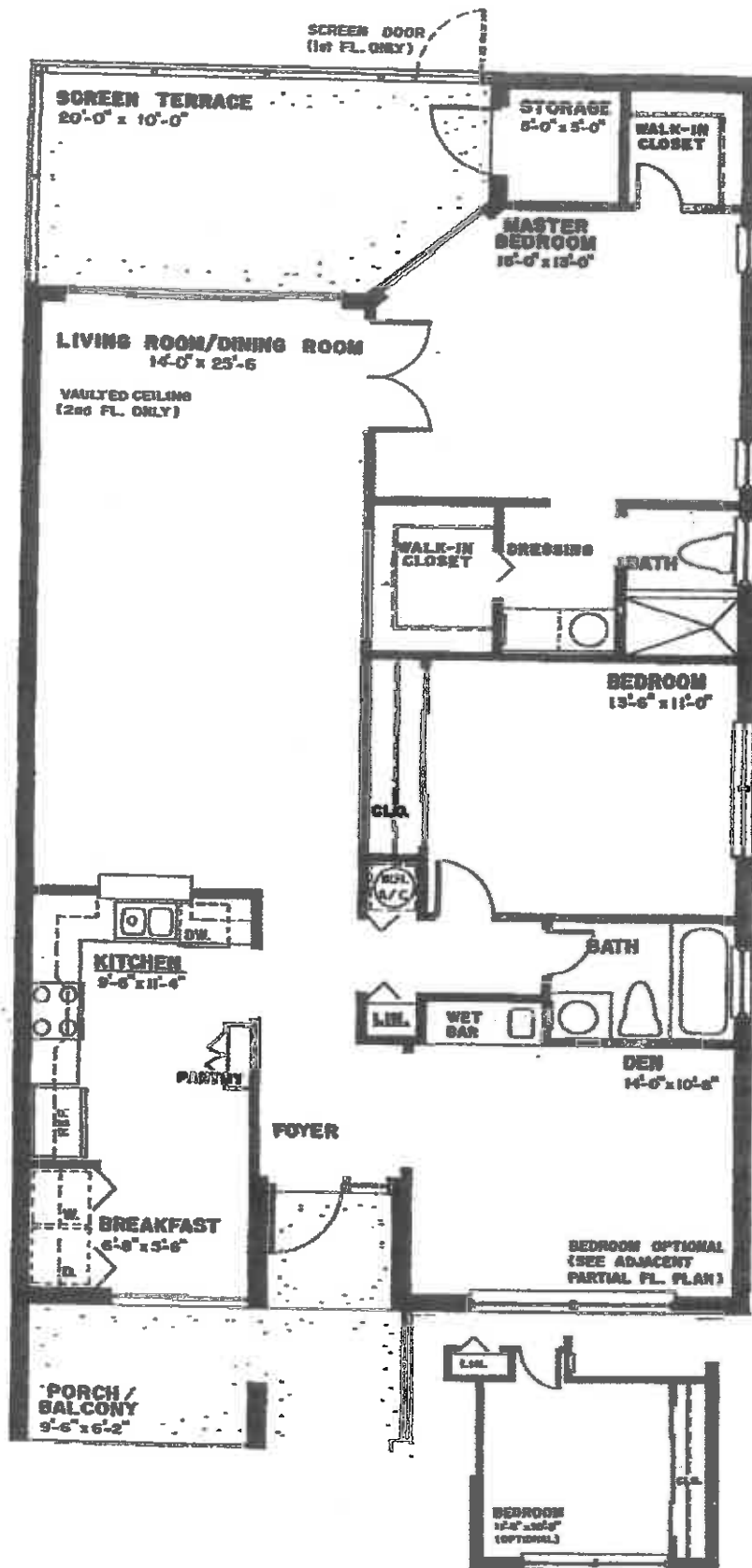
- Garden-type... two story
- Private entrance to each apartment
- Each residence architecturally designed for maximum privacy and view

SOCIAL AND RECREATION:

- Three heated swimming pools with cabana facilities
- Large patio and sundeck areas
- BBQ grills for outdoor entertaining
- Winding bicycle and jogging path
- Tennis

the **Hamptons**
 at Kings Lake

Oral representations cannot be relied upon as correctly stating representations of the developer. For correct representations, make reference to the documents required by Section 718.503, Florida statutes, to be furnished by a developer to a buyer or lessee.

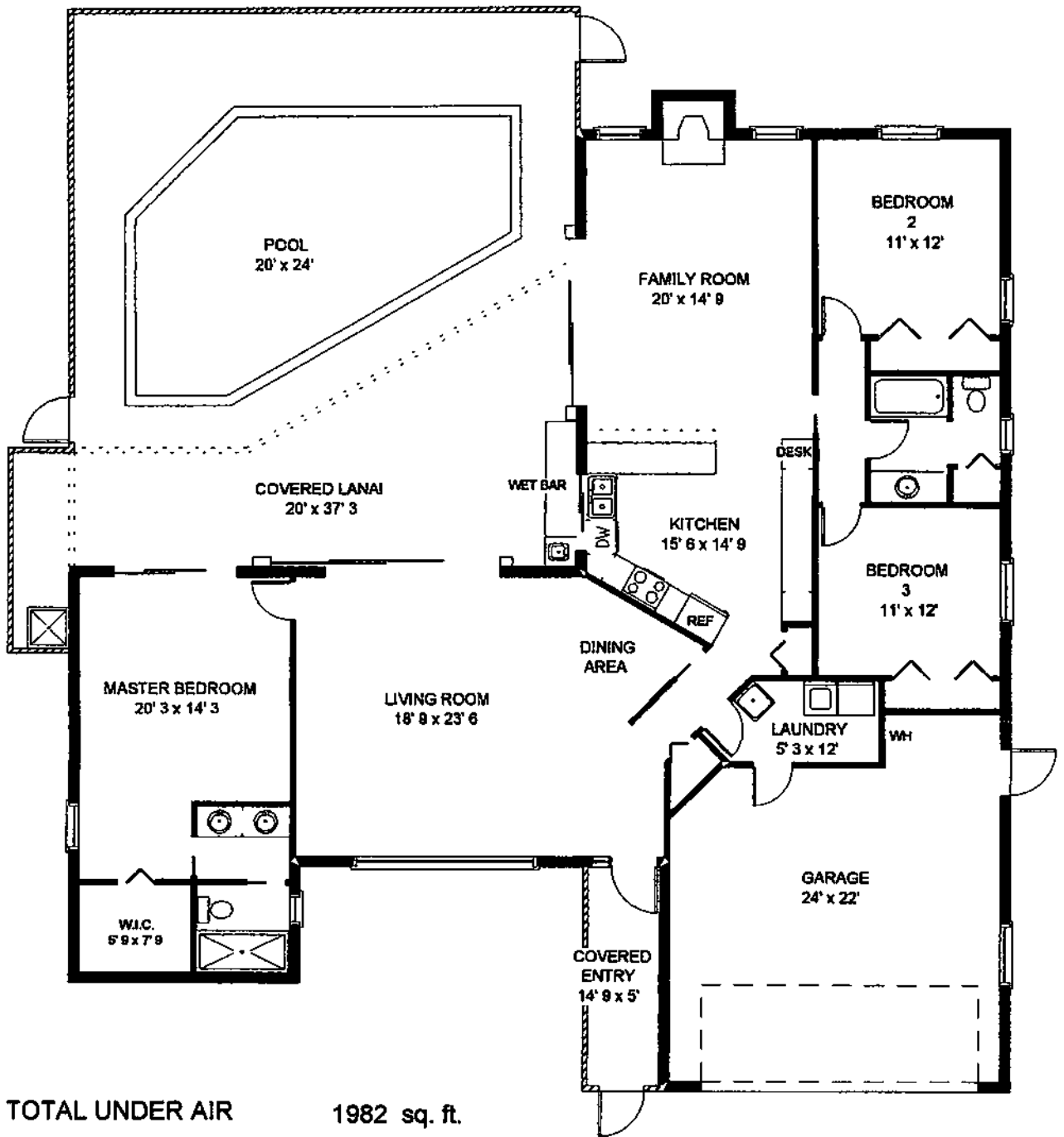


the Coventry

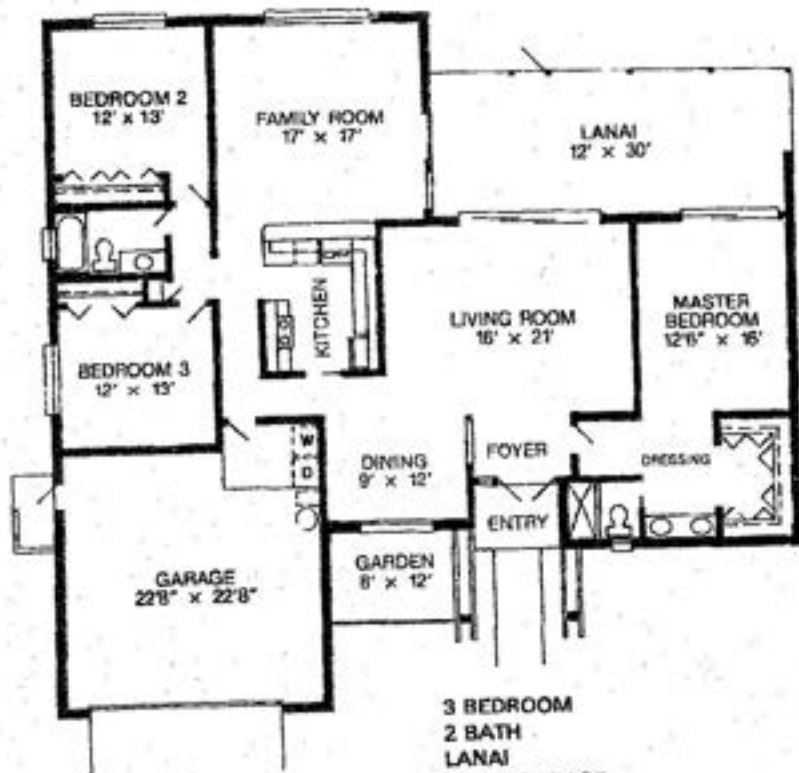
3 Bedroom/Den, 2 Bath

1465 Sq. Ft
Under Air

Floor Plan
Of Actual Unit
Is Reversed



TOTAL UNDER AIR	1982 sq. ft.
Garage	501 sq. ft.
Covered Entry	77 sq. ft.
Covered Lanai	386 sq. ft.
<hr/>	
TOTAL UNDER ROOF	2946 sq. ft.
Lanai/Pool	886 sq. ft.
<hr/>	
TOTAL AREA	3832 sq. ft.



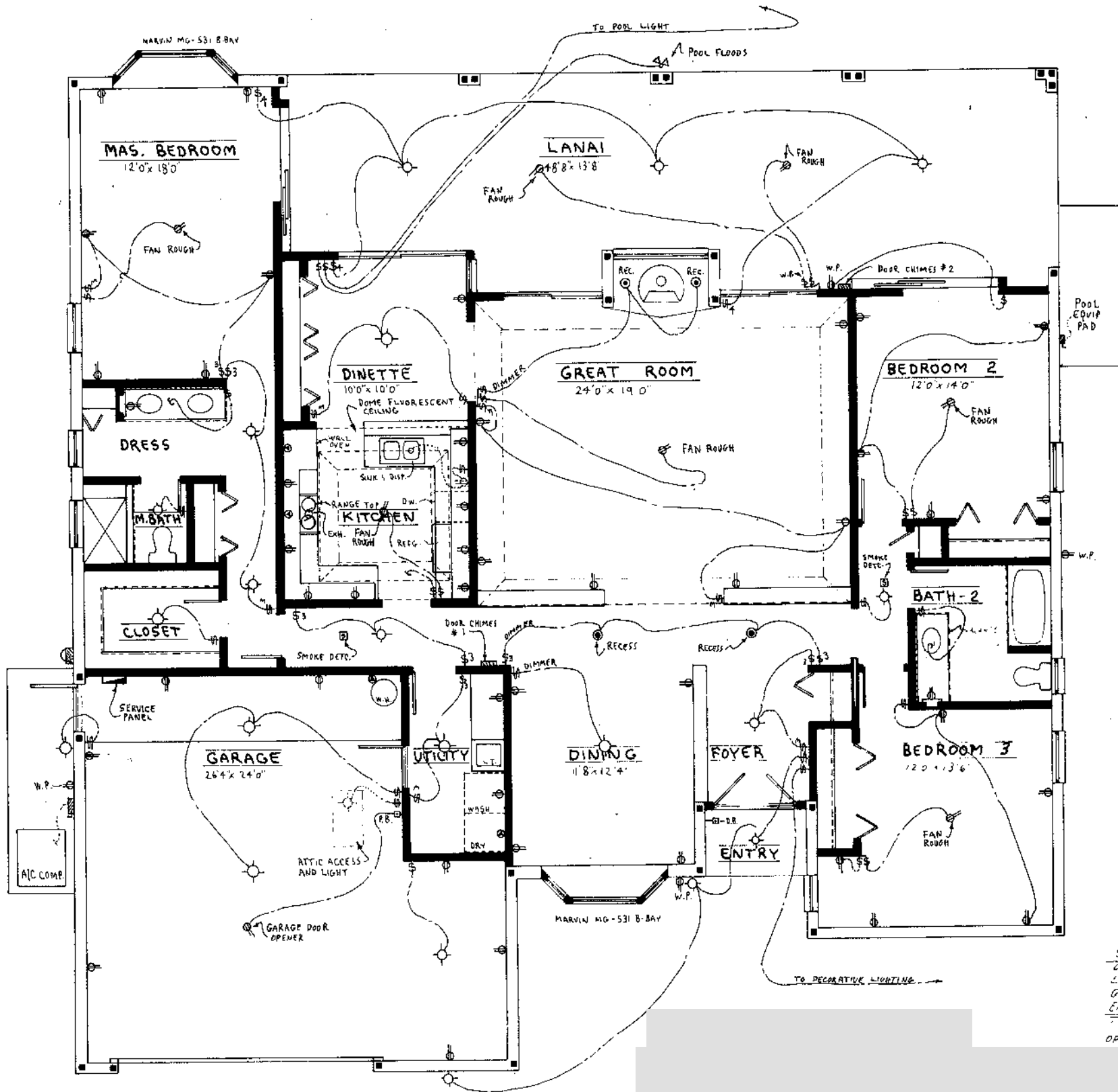
3 BEDROOM
 2 BATH
 LANAI
 2 CAR GARAGE

Living Area 2004 Sq. Ft.
 Total Area 2937 Sq. Ft.



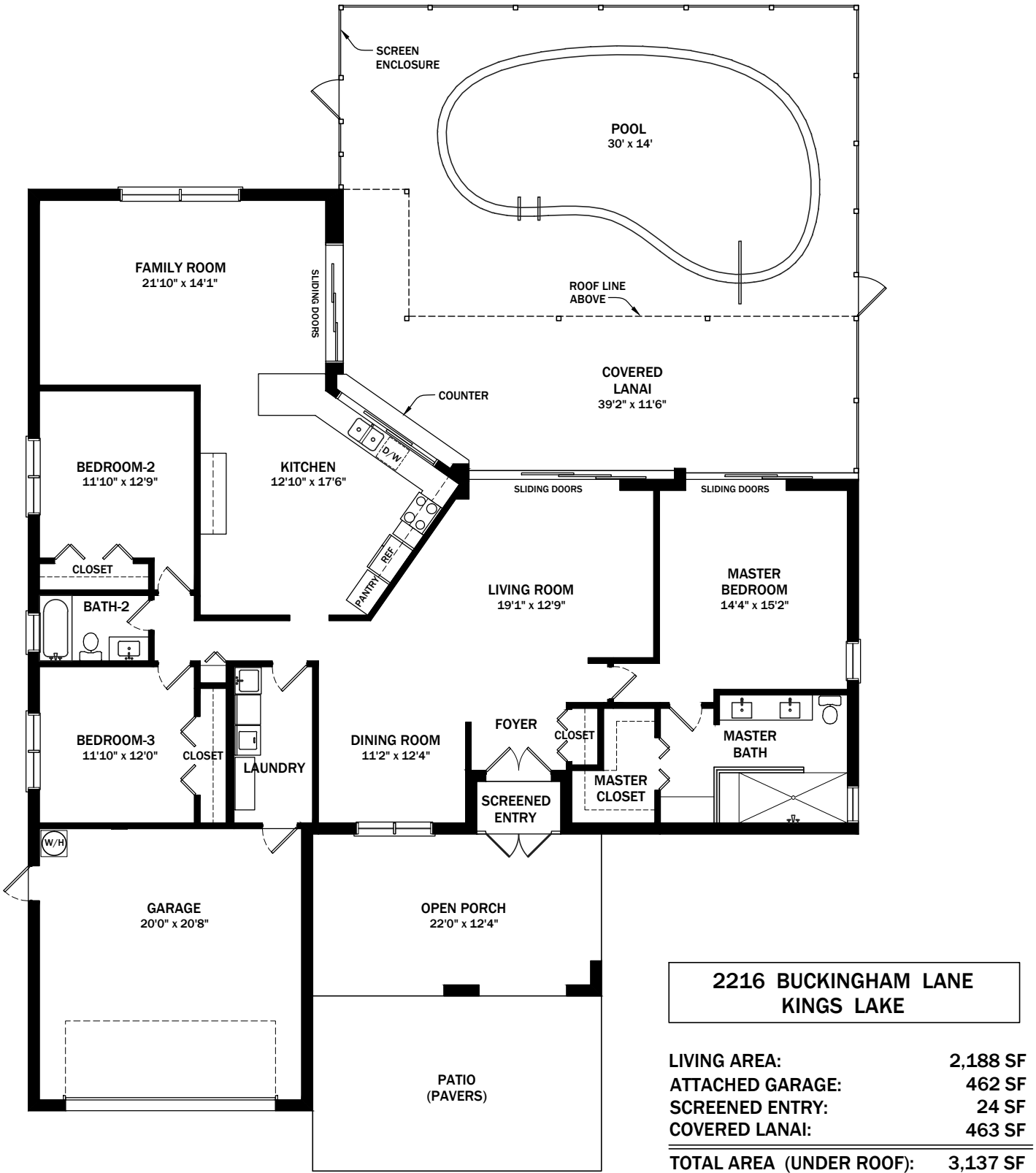
THE
NEFF CORPORATION
 OF

Florida State Certified General



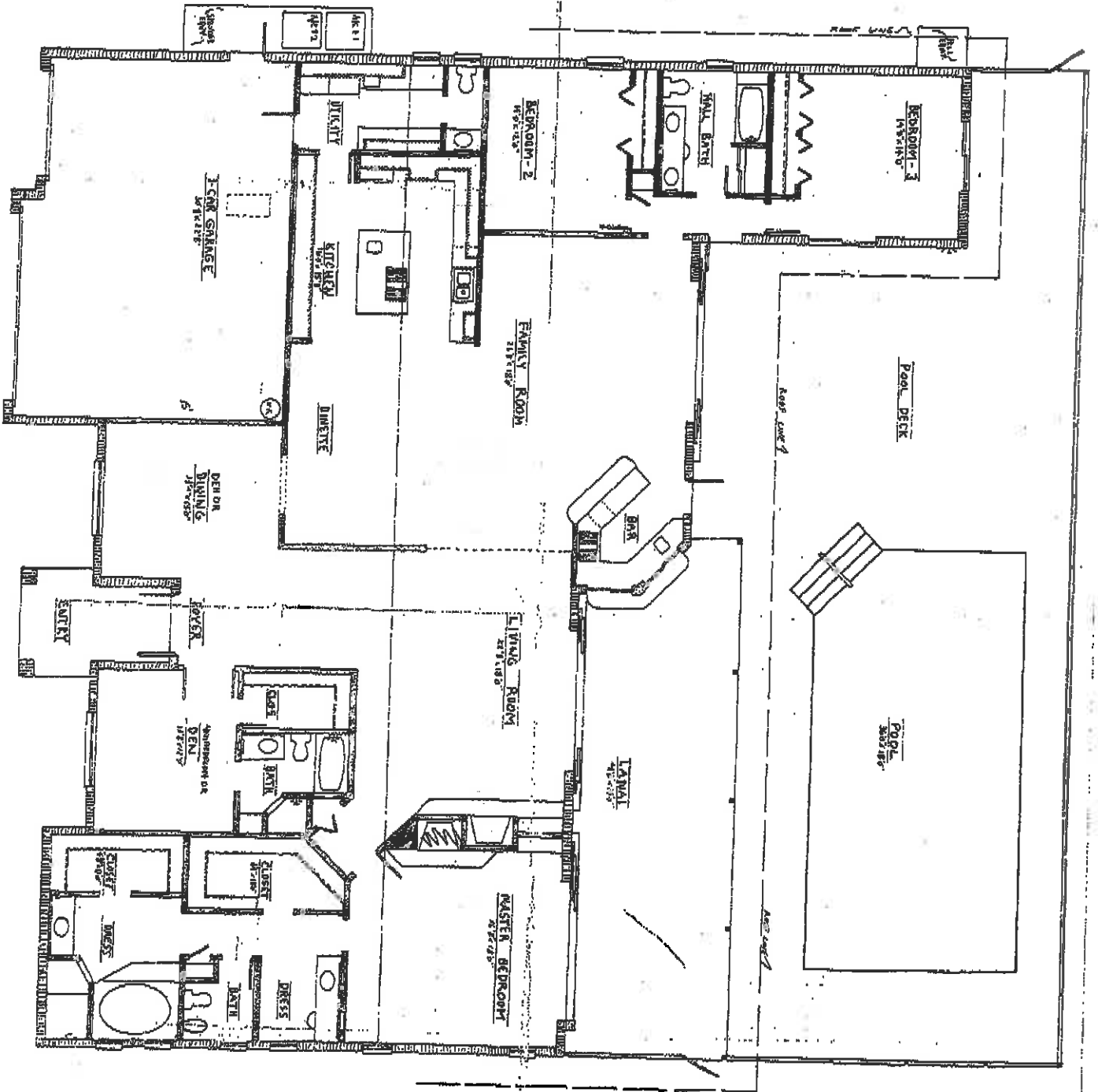
Sq. FTG.	
LIVING AREA	2,233
LANAI	626
GARAGE	612
ENTRY	25
TOTAL	3,496

OPTIONAL ATTIC ROOM 480



FLOOR PLAN

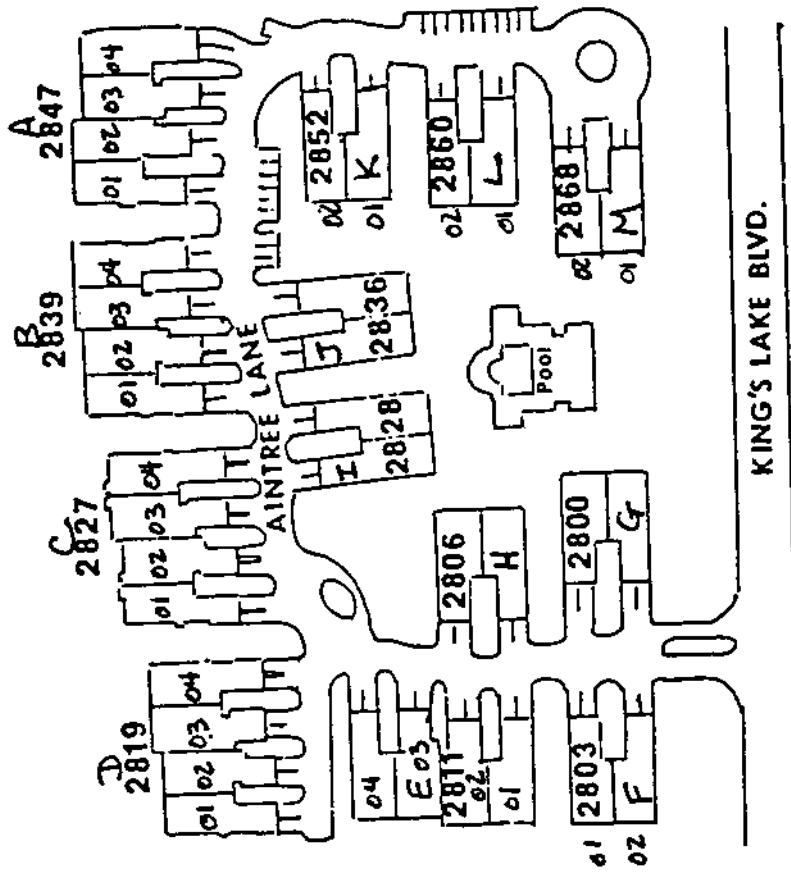
ALL MEASUREMENTS AND AREAS ARE DEEMED RELIABLE, BUT NOT GUARANTEED



SQUARE FOOTAGE
 GARAGE 1200
 DEN OR DINING 1200
 KITCHEN 1200
 LIVING 1200
 TOTAL 5,170 SQ. FT.

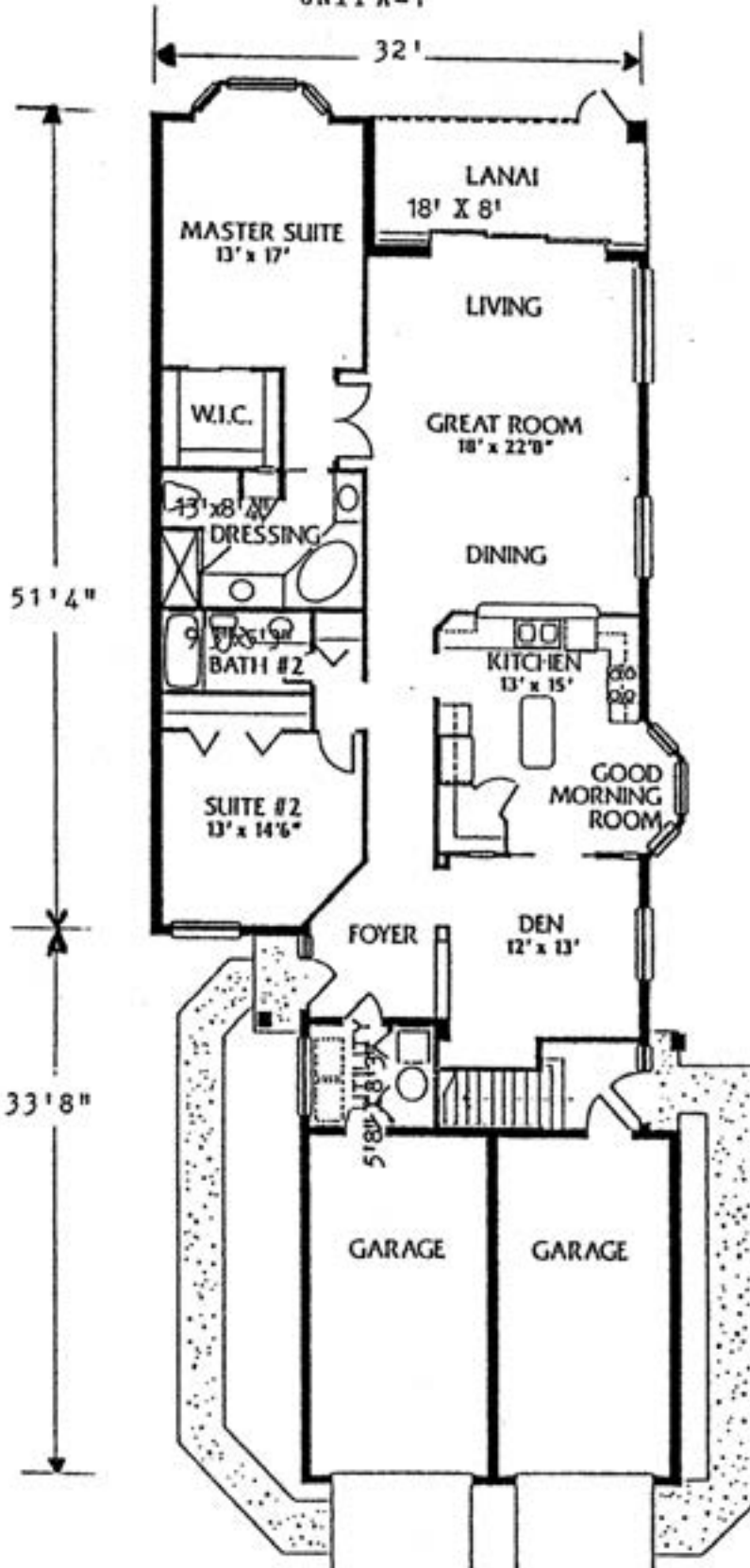
GENERAL NOTE
 ALL DIMENSIONS ARE
 TO FACE UNLESS
 OTHERWISE NOTED

STEEPLECHASE AT KING'S LAKE ZONE II



FLOOR PLAN

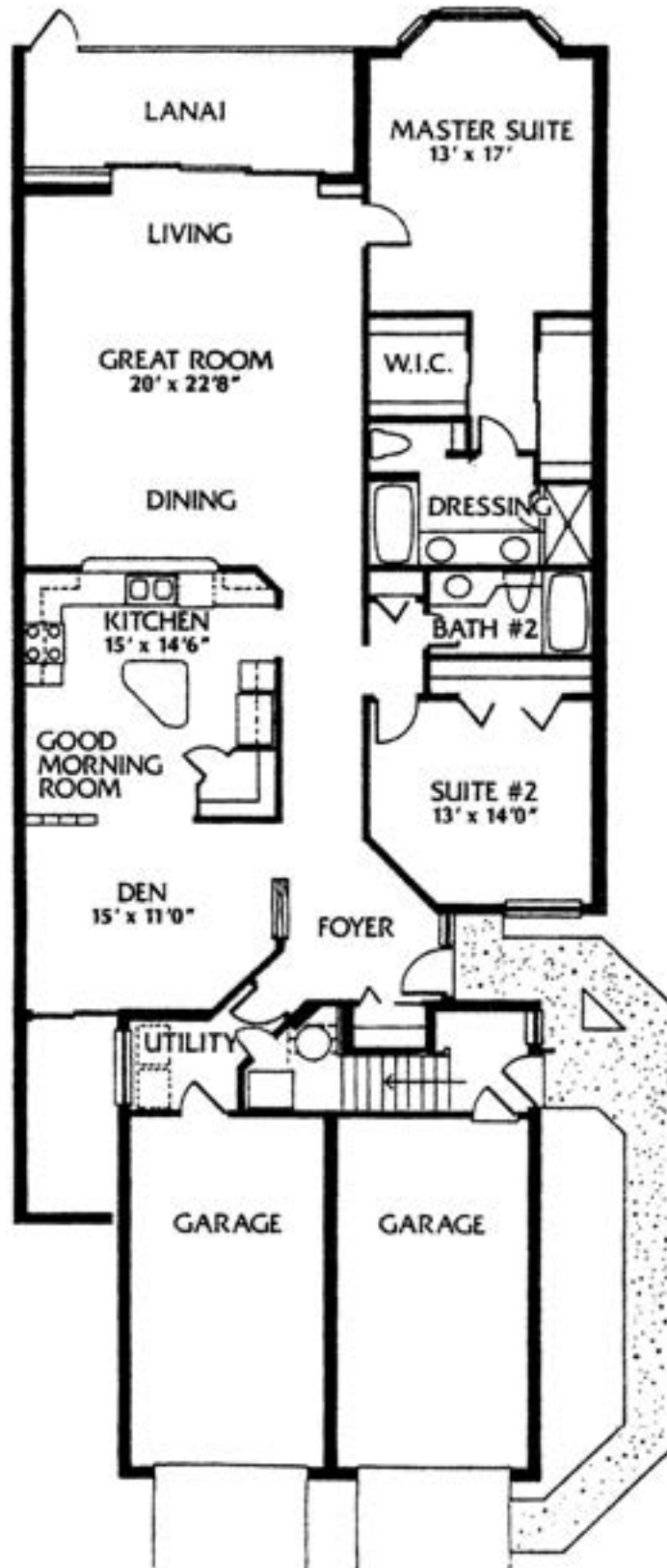
UNIT A-1



GROUND FLOOR	
TOTAL SQ. FT.	
Total Living	1754
Lanai	144
Garage	267
Total Area	2165



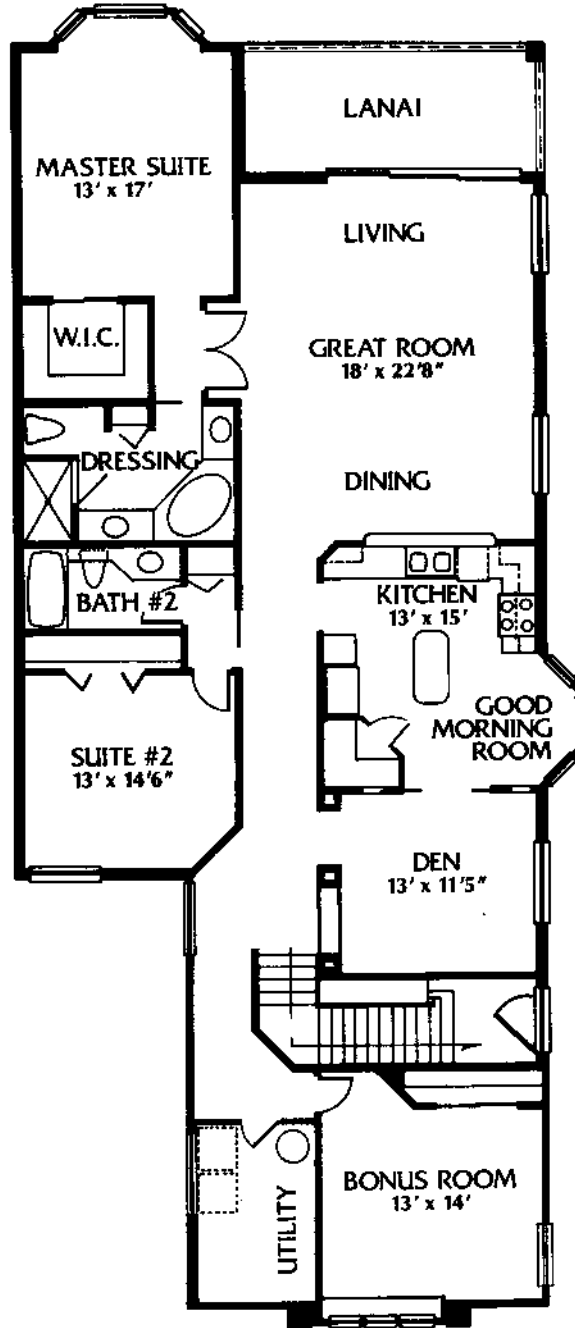
LEXINGTON



GROUND FLOOR	
TOTAL SQ. FT.	
Total Living	1863
Lanai	160
Garage	267
Total Area	2290



OXFORD



SECOND FLOOR

TOTAL SQ. FT.

Total Living	2130
Lanai	144
Garage	267
<hr/>	
Total Area	2541

Dimensions and room sizes are approximate and subject to change.

Site Plan

Tamaynd Place
AT KING'S LAKE



P.O. Box 7262 • Naples, Florida 33941
(813) 775-6700



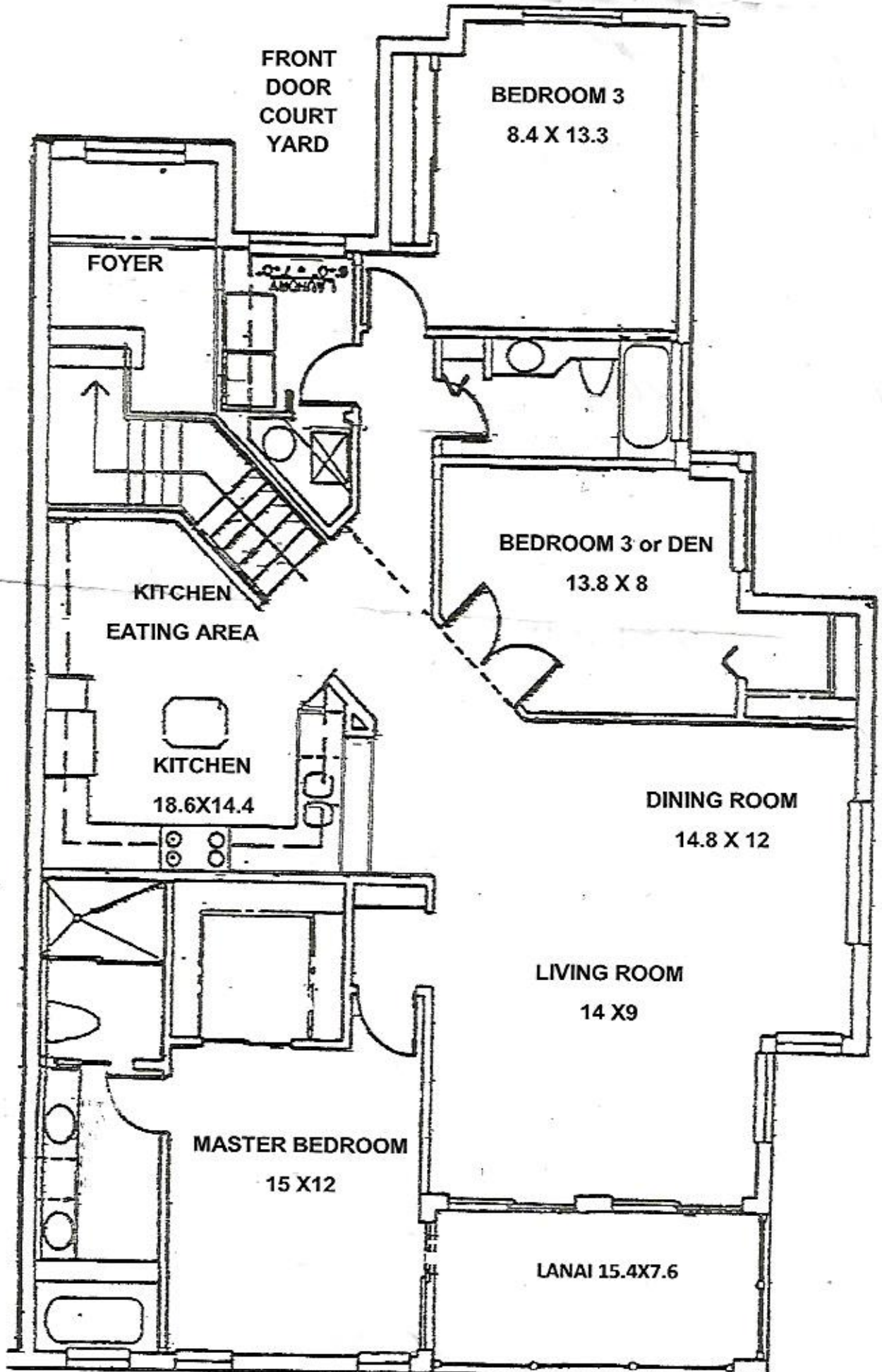
Levit Homes

The Laurel-I

Two Bedroom/Two Bath/Single Car Garage



Living Area .. 1368 sq.-ft.
Garage 200 sq.-ft.
Patio 161 sq.-ft.
Total 1729 sq.-ft.



FRONT
DOOR
COURT
YARD

BEDROOM 3
8.4 X 13.3

FOYER

ARCHWAY

BEDROOM 3 or DEN
13.8 X 8

KITCHEN
EATING AREA

KITCHEN
18.6X14.4

DINING ROOM
14.8 X 12

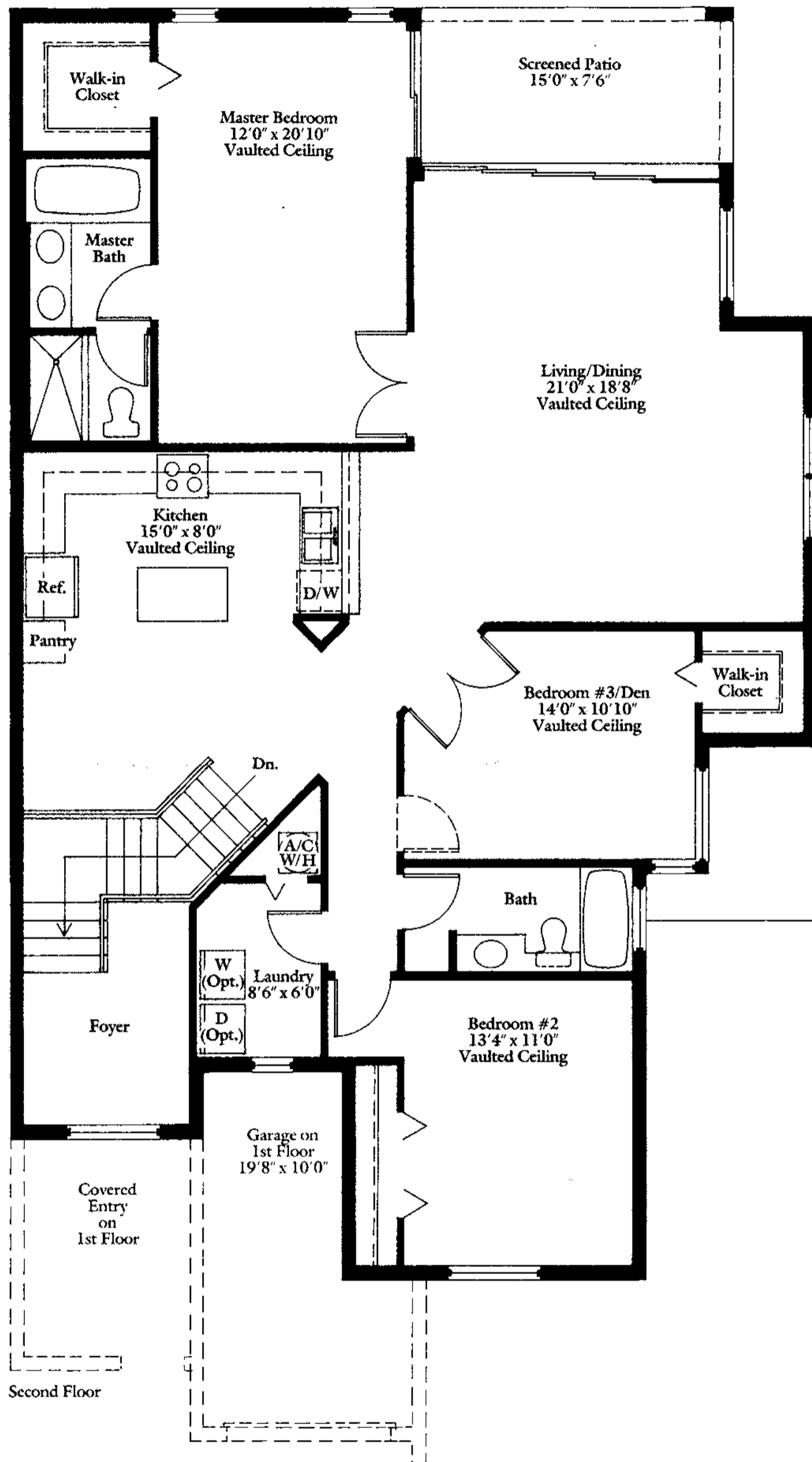
LIVING ROOM
14 X 9

MASTER BEDROOM
15 X 12

LANAI 15.4X7.6

The Cypress-I

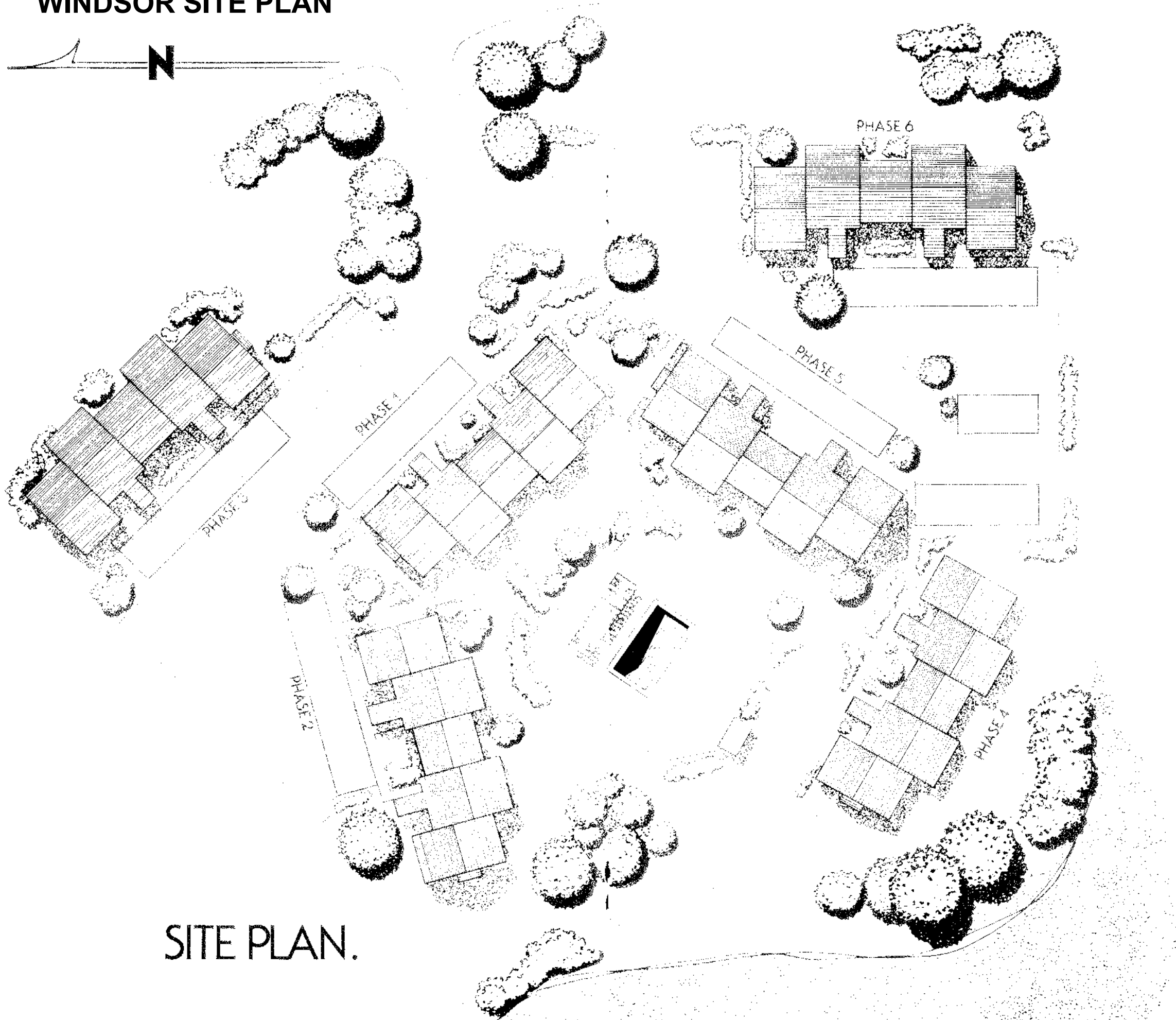
Three Bedroom/Two Bath/Single Car Garage



*Dotted lines designate areas belonging to second floor residence.

Illustration is artist's depiction only, and in production may not be as shown. Landscaping depicted is not to scale and may vary as to maturity and number. Prices, plans, specifications, dimensions and materials are subject to change without notice.

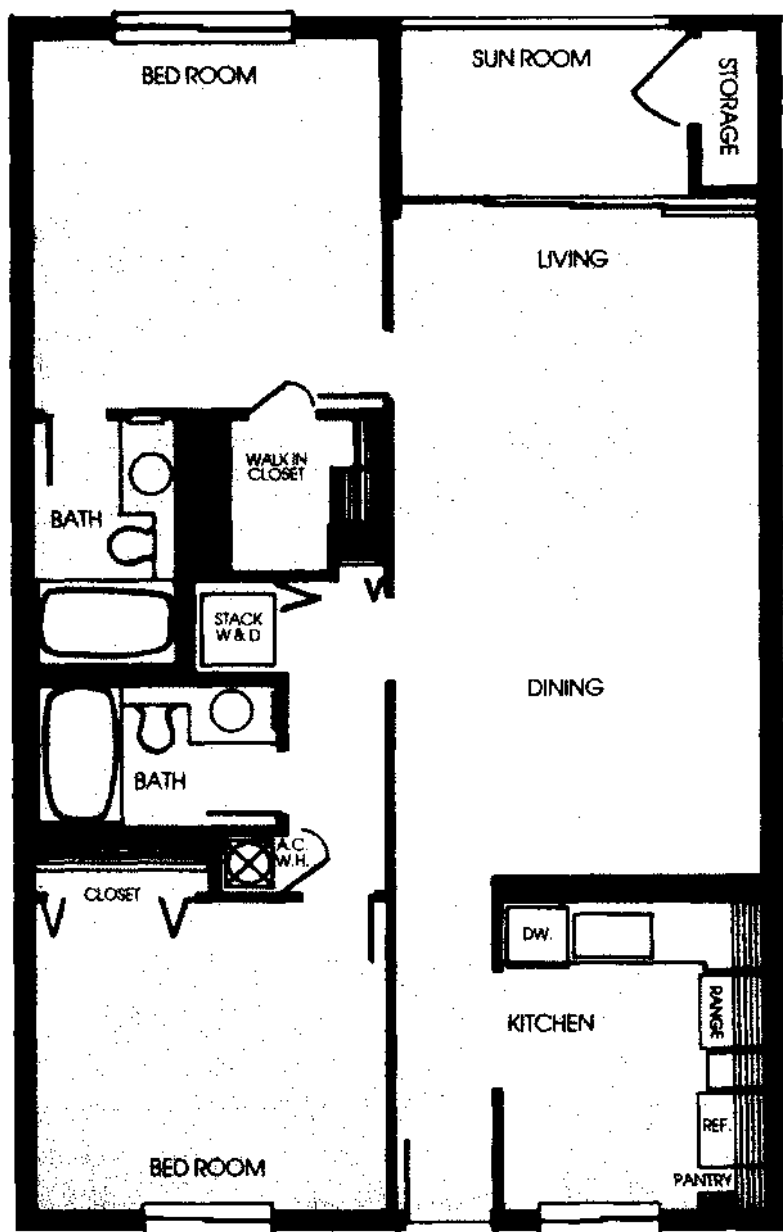
WINDSOR SITE PLAN



SITE PLAN.

THE WINDWARD.

(B) TWO BEDROOM



1901 Courtyard Way Unit 101 Naples, Florida 33962.
Sales Office (813) 732-0036 Fax (813) 643-1021

Courtyard Way
AT KINGS LAKE

The FL

