

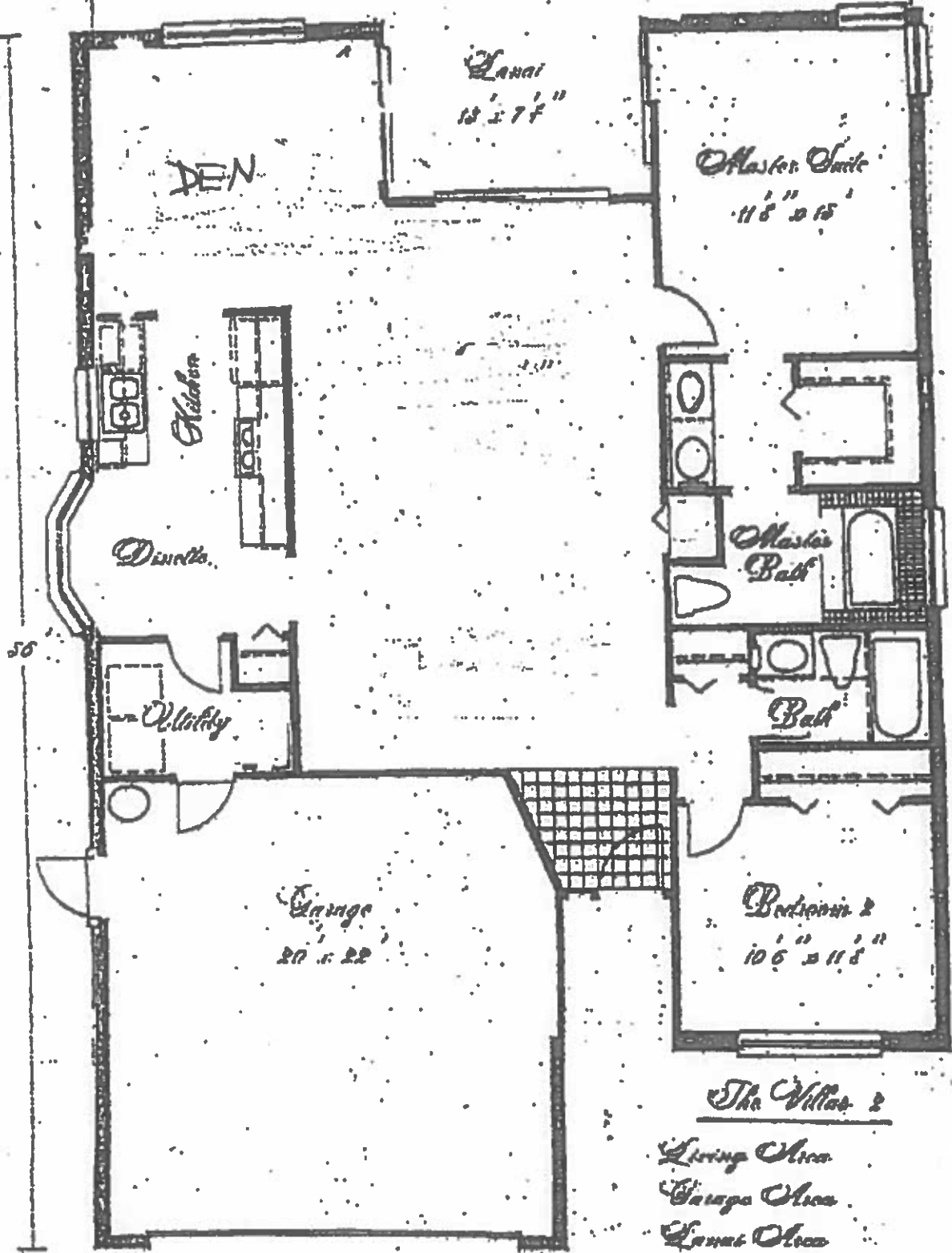
Floor Plans

These floor plans have been assembled as a resource for you. They may not be inclusive of every home in the community.

Please note that over time, owners may make modifications to spaces that may not be captured in these original floor plans.

Renderings are not a guarantee of space measurement. Interested parties should verify through their own secured services.

SCREEN w/ ROOF



The Villas 2

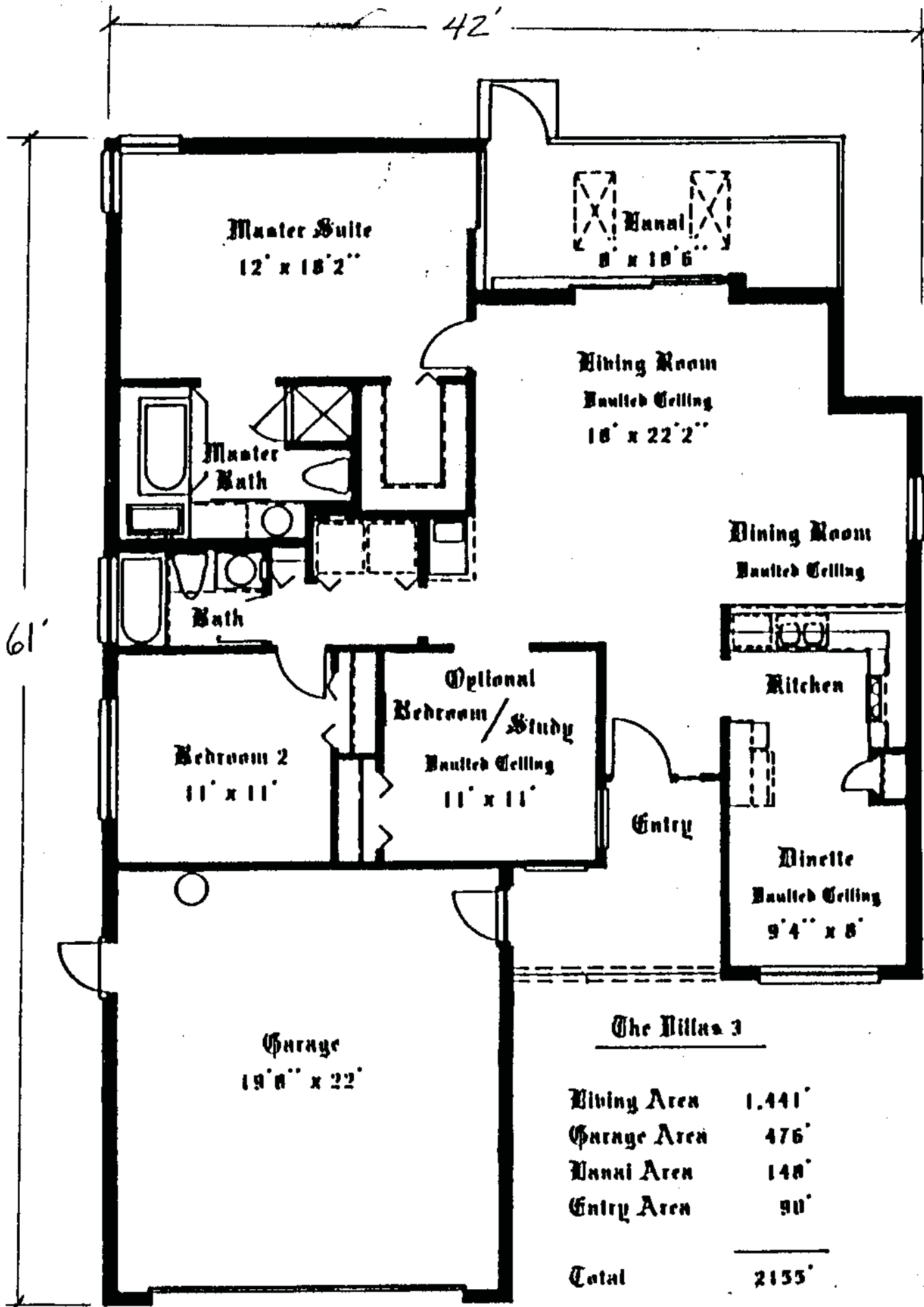
Living Area	1389'
Garage Area	440'
Lanai Area	312'
Entry Area	33'
<u>Total Area</u>	<u>2174'</u>

2BR VILLA



Reverse Floorplan

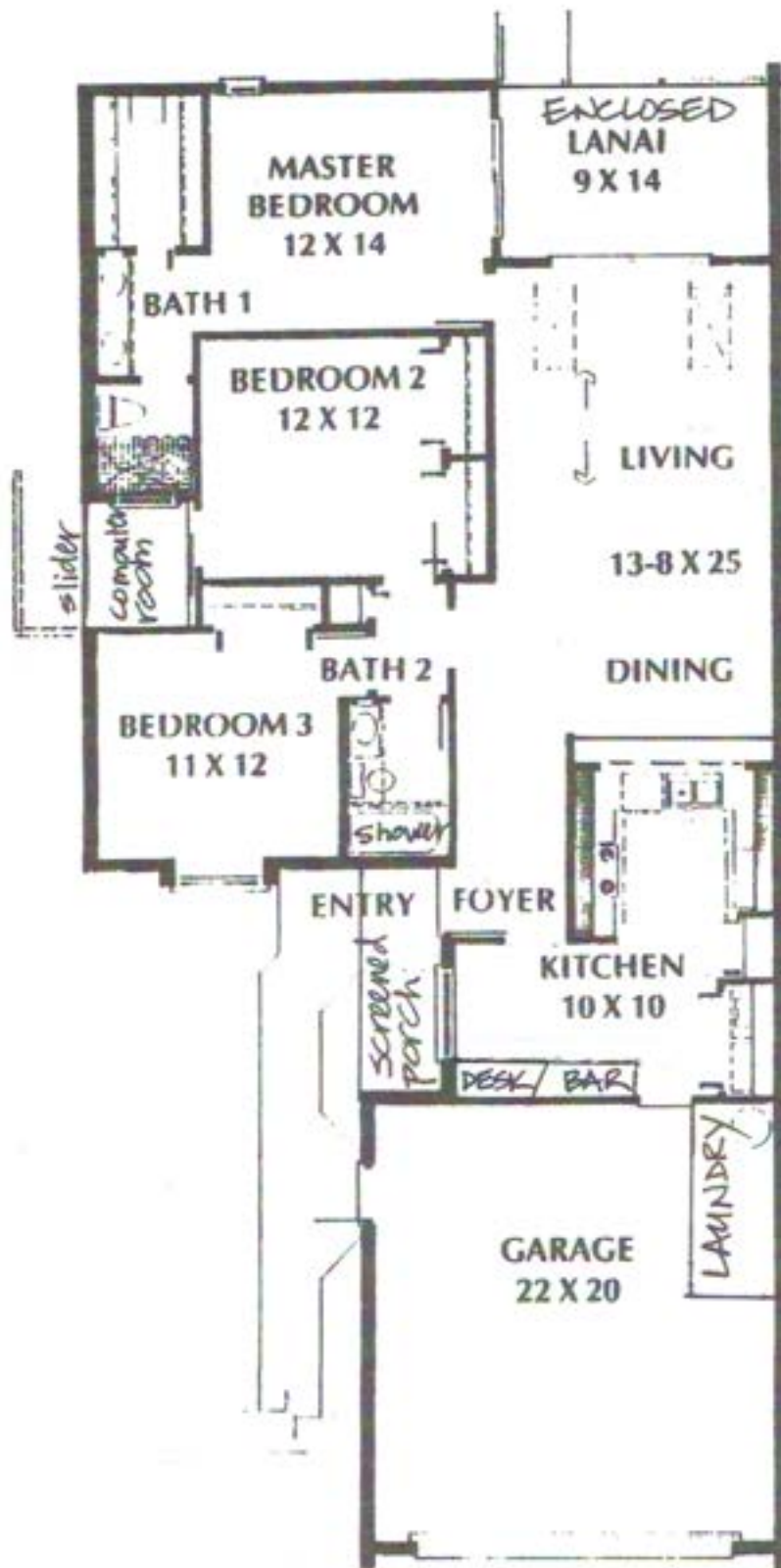
Square Feet	1435
Enclosed Lanai	154
<hr/>	
Total A/C	1589
Garage	440
Total S.F.	2029

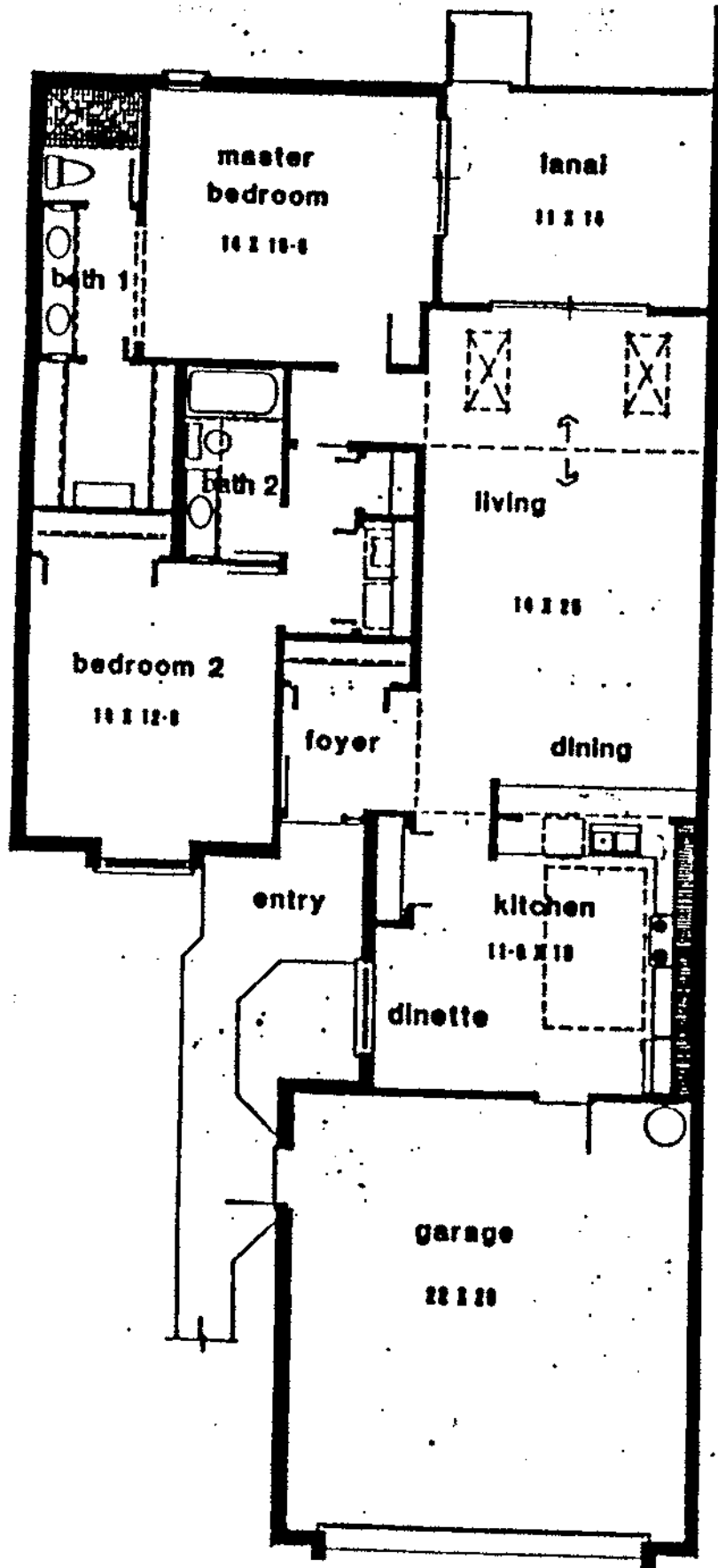


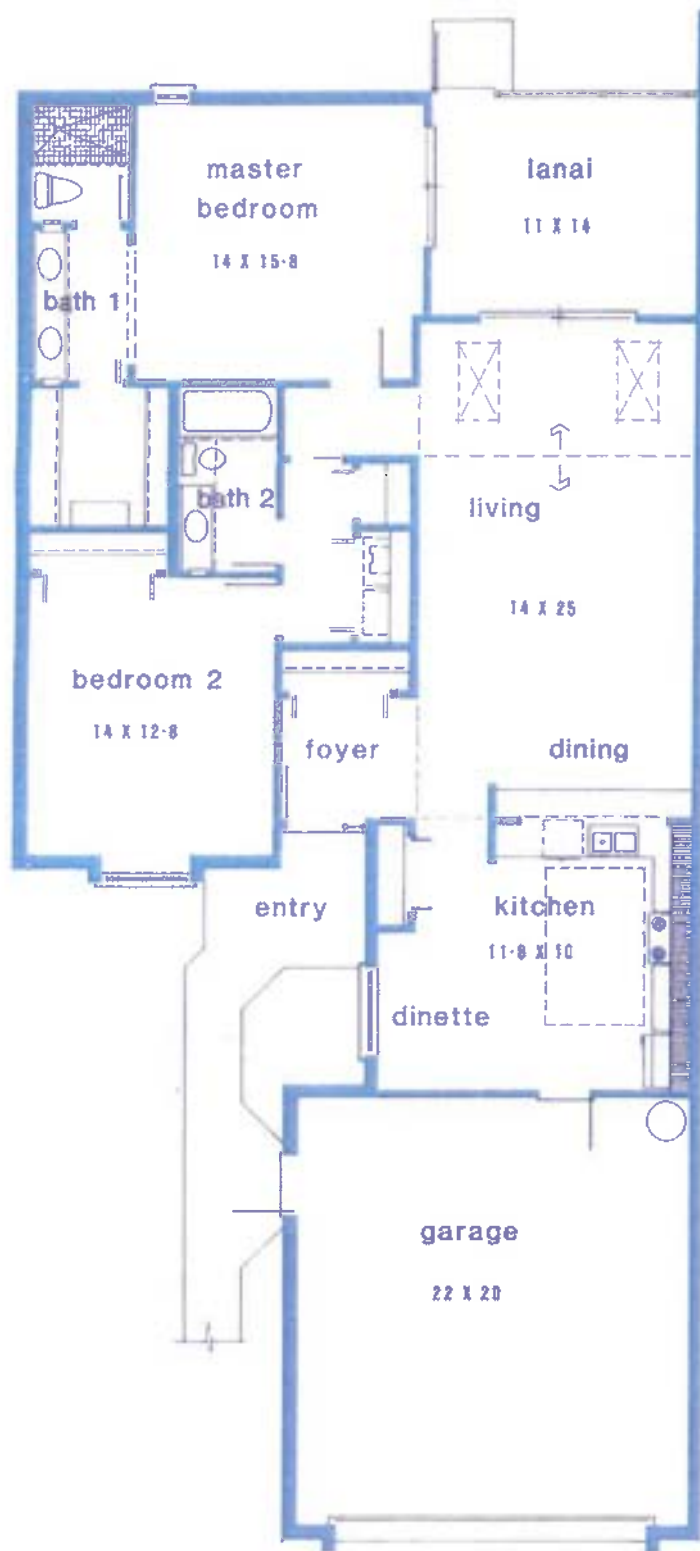
The Villas 3

Living Area	1,441'
Garage Area	476'
Hall Area	148'
Entry Area	90'
Total	2,155'

Sand Dollar III



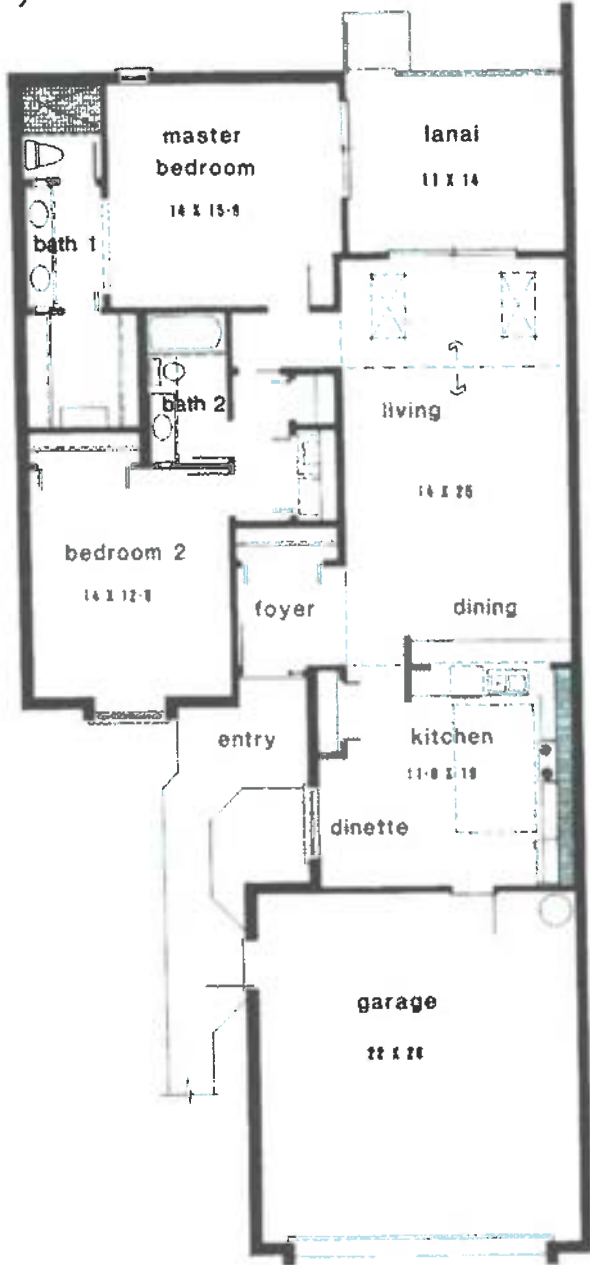




FOXFIRE
VILLAS II
FLOORPLAN



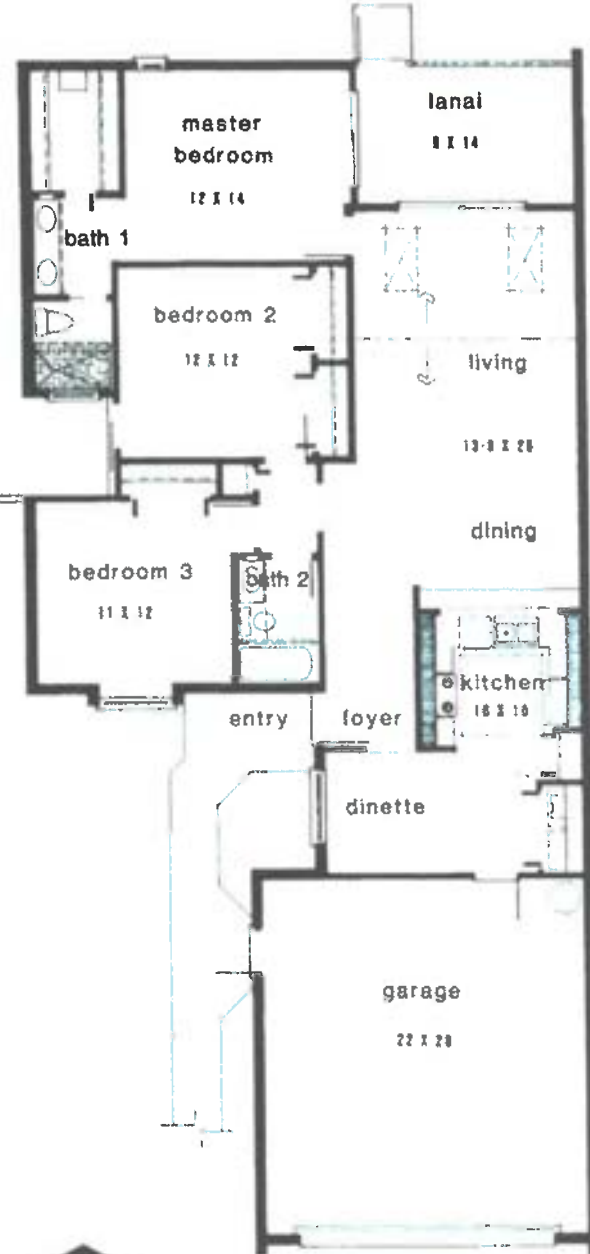
Sand Dollar II



*loony
any*

*Jupiter Villa
(U.S. Homes)*

Sand Dollar III



*← same square
footage →*

America calls us home.®

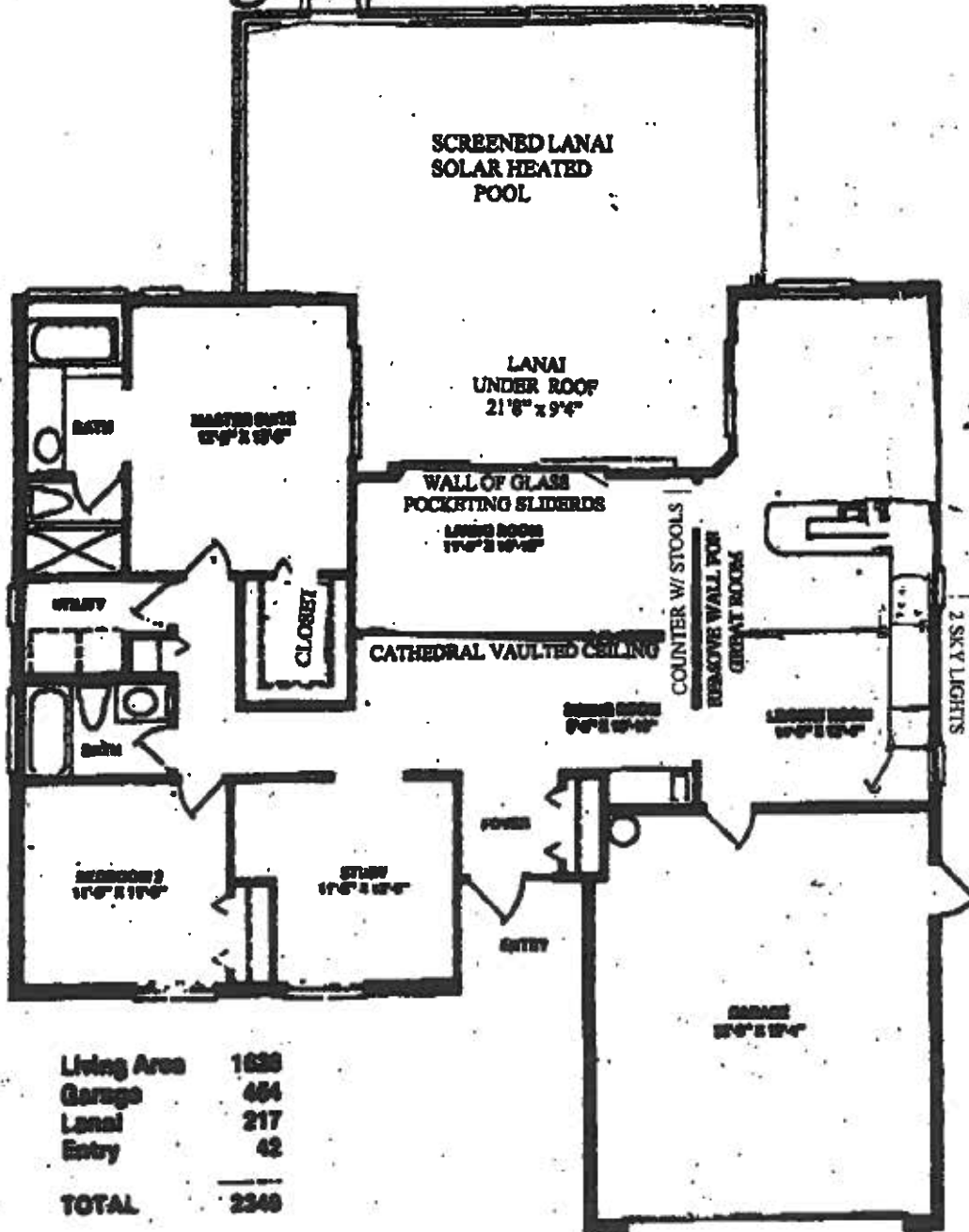


LISTED ON THE NEW YORK STOCK EXCHANGE



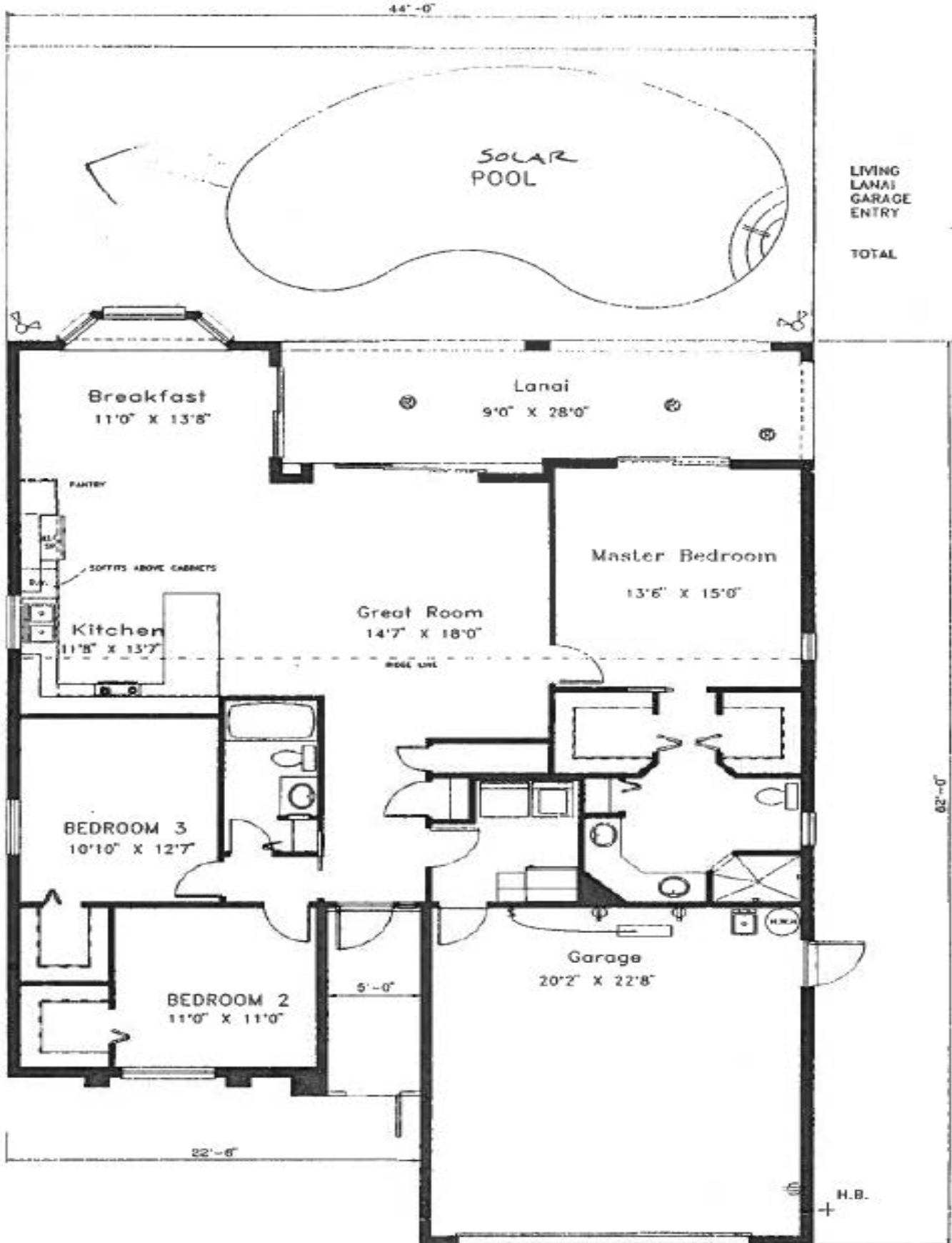


Cambridge

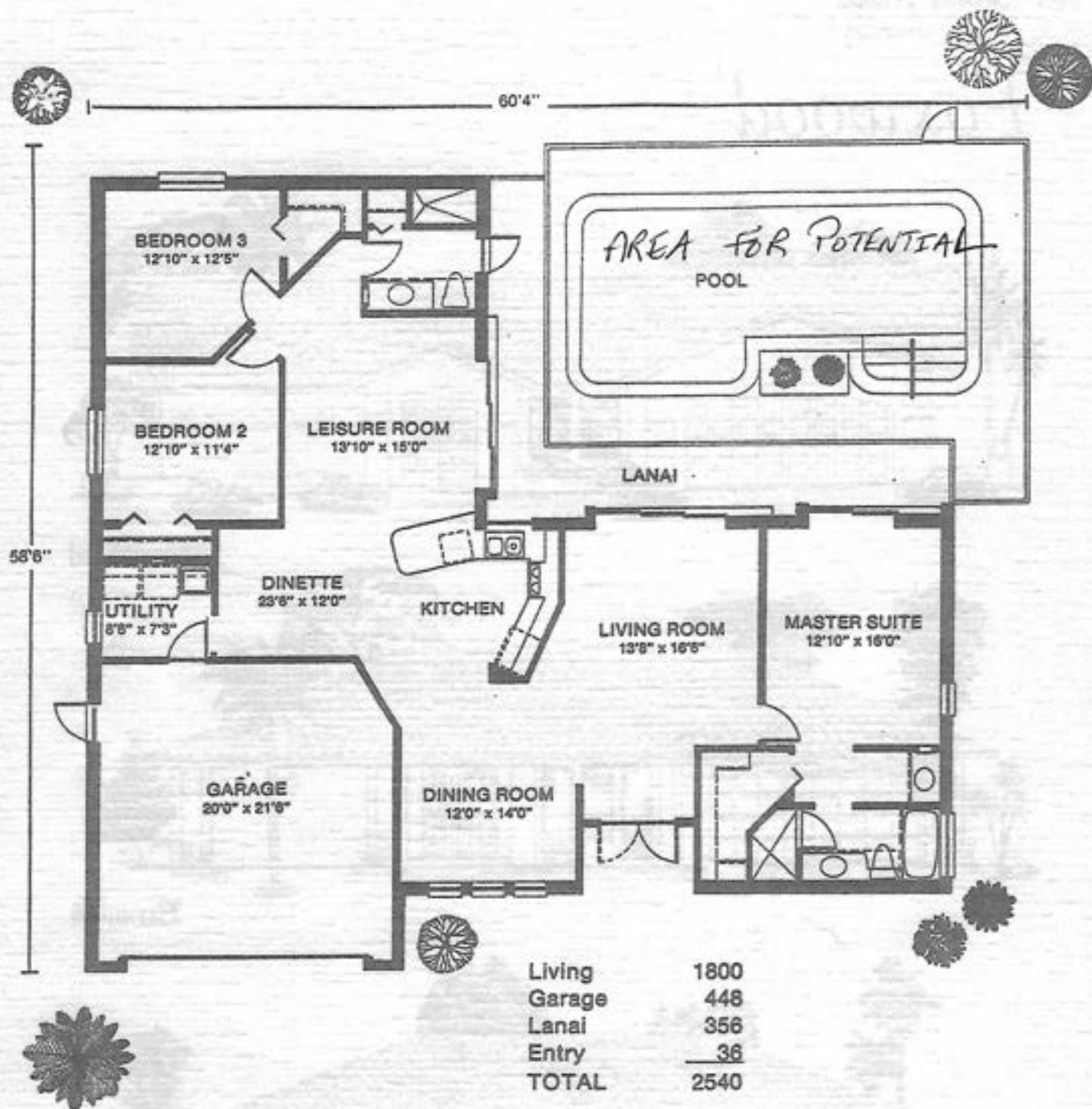


Living Area	1638
Garage	484
Lanai	217
Entry	42
TOTAL	2348

FOXFIRE MODEL



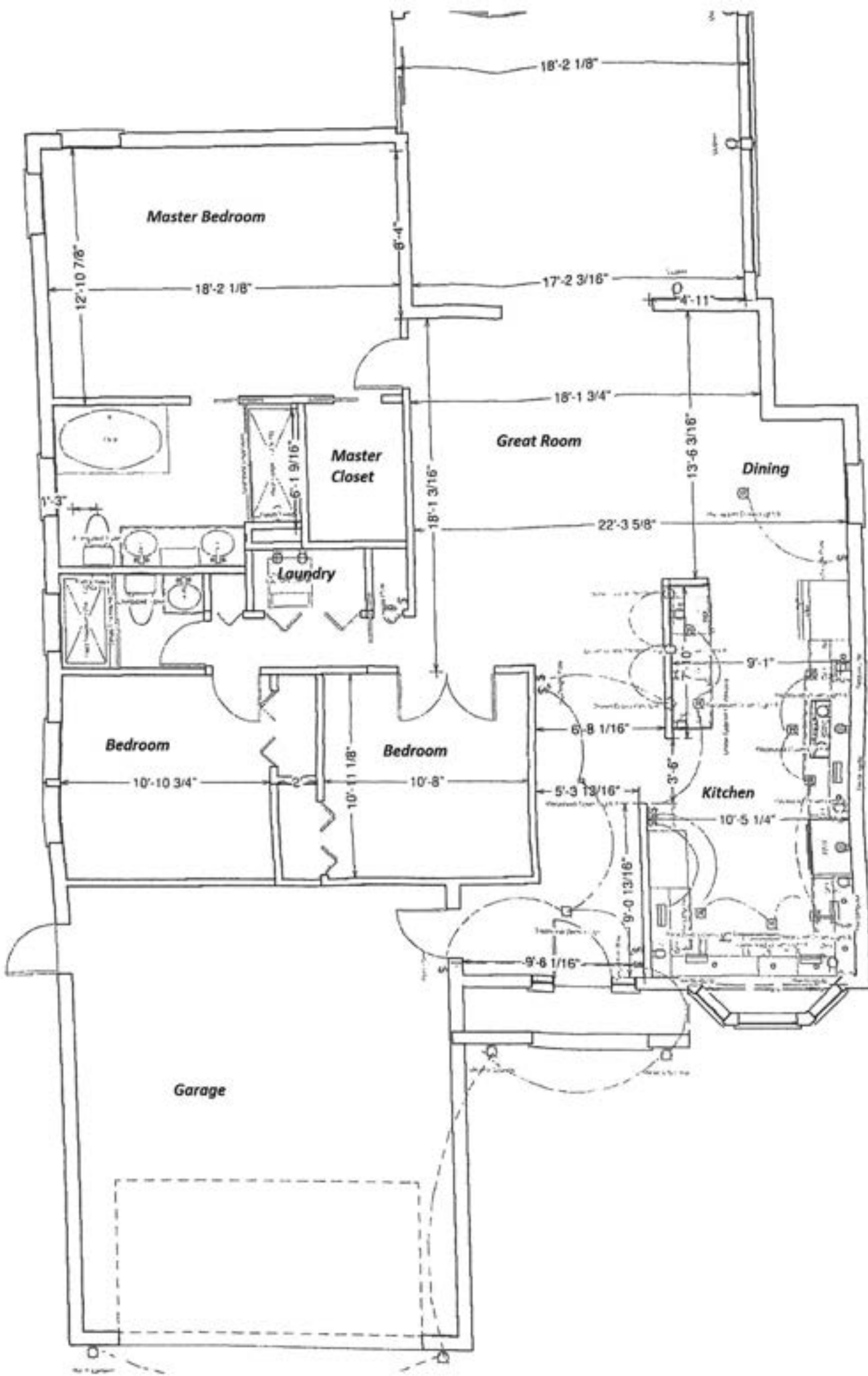
Foxwood

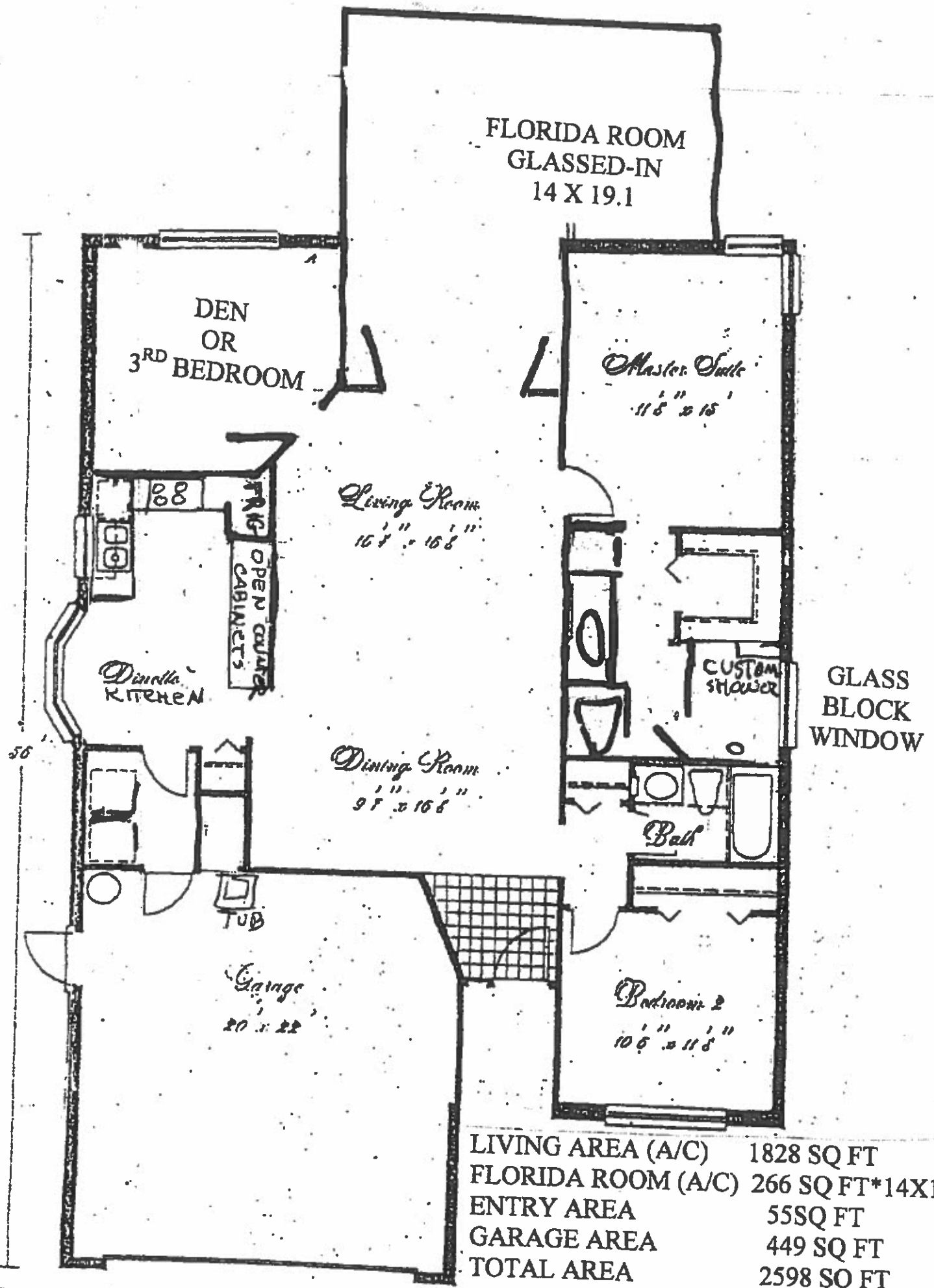


**Rutenberg
Homes**

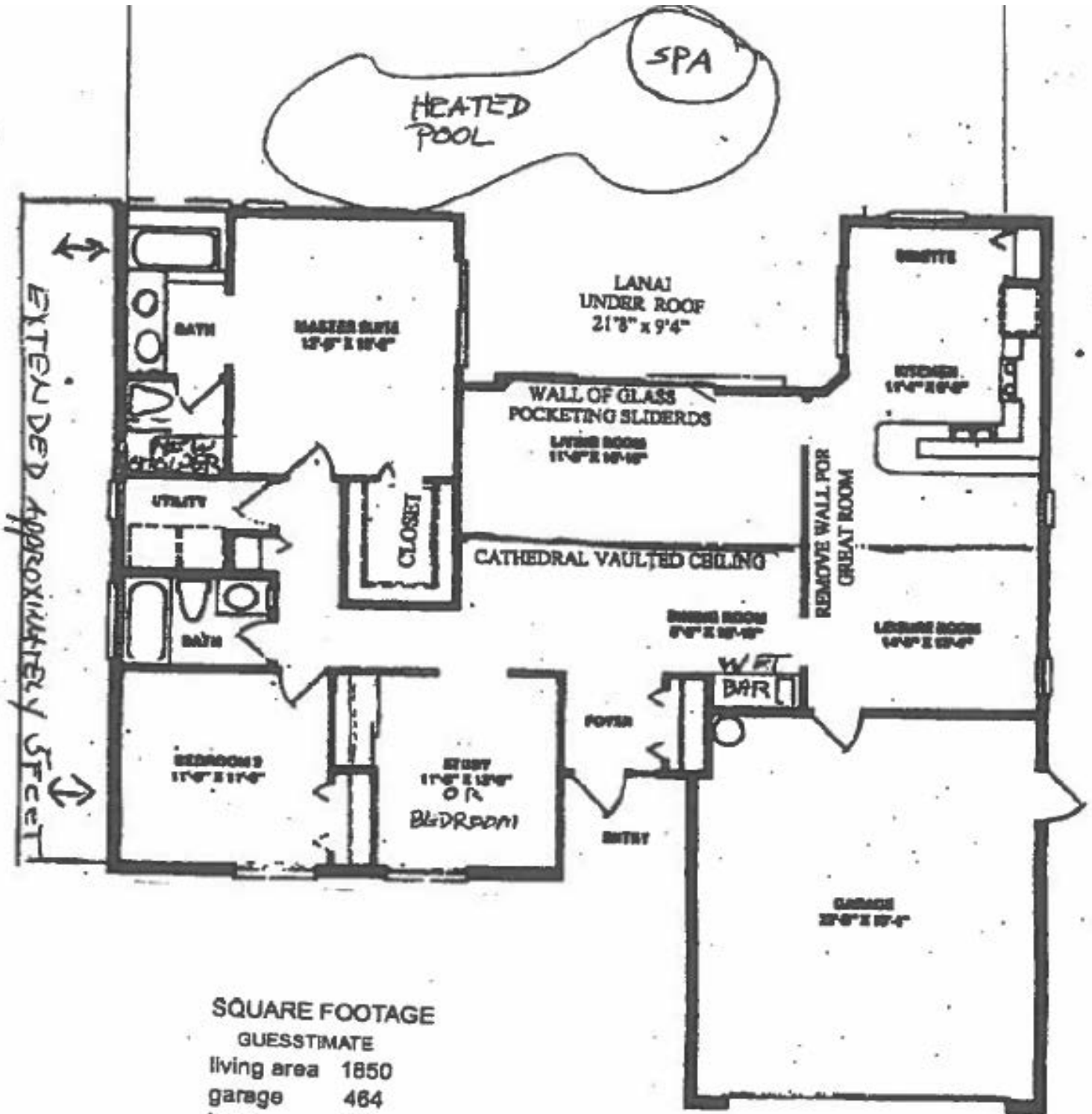
All floor plans are the property of U.S. Home, Rutenberg Division, and are copyrighted. Due to normal construction tolerances all dimensions are approximate. Room sizes are taken from paint surface to paint surface. Floor plan and features are subject to change without notice, please ask your Rutenberg Sales Consultant.







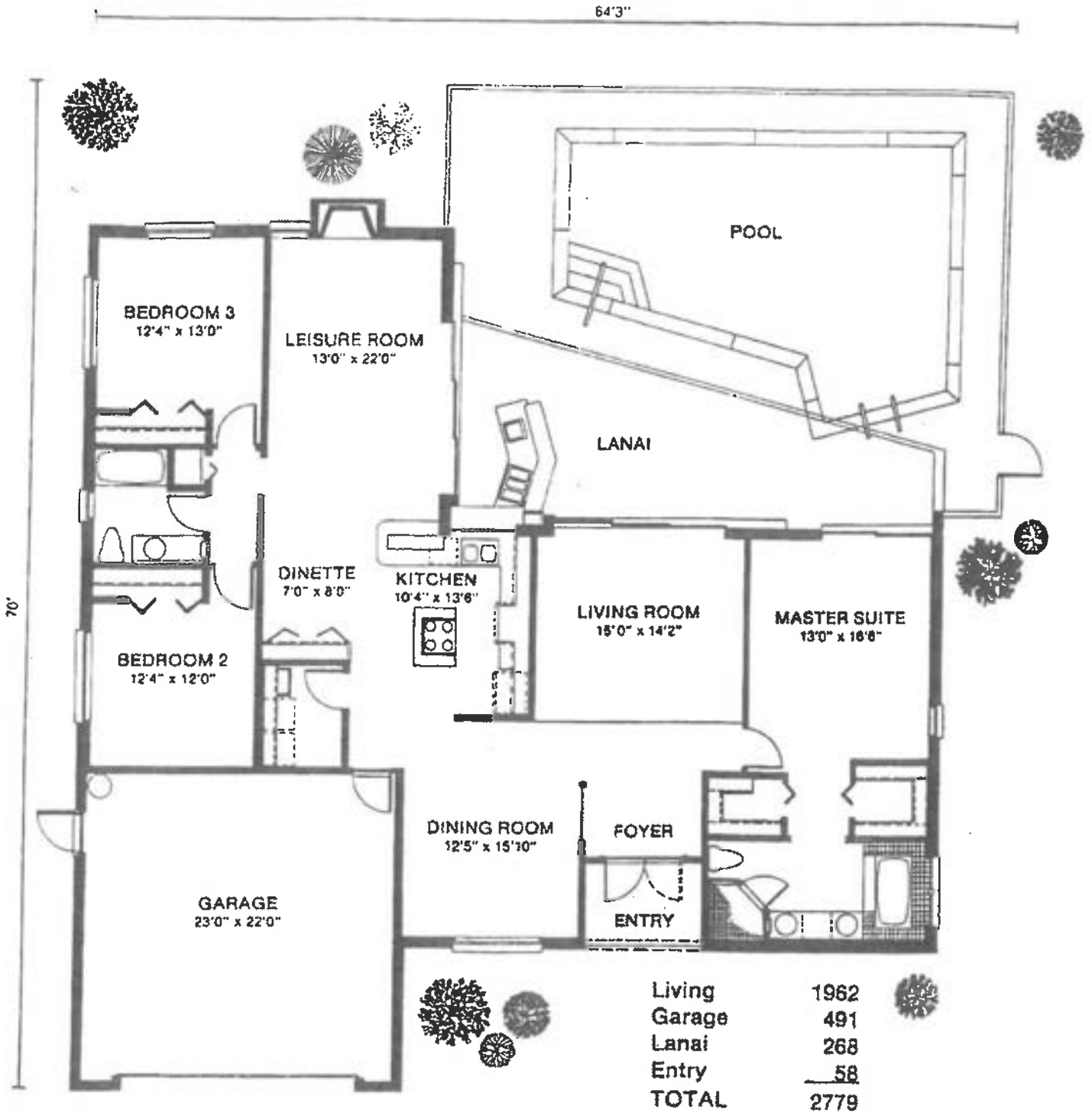
CAMBRIDGE MODEL ** Extended



SQUARE FOOTAGE
GUESSTIMATE

living area	1850
garage	464
lanai	800
entry	42
TOTAL	3156

Madeira III

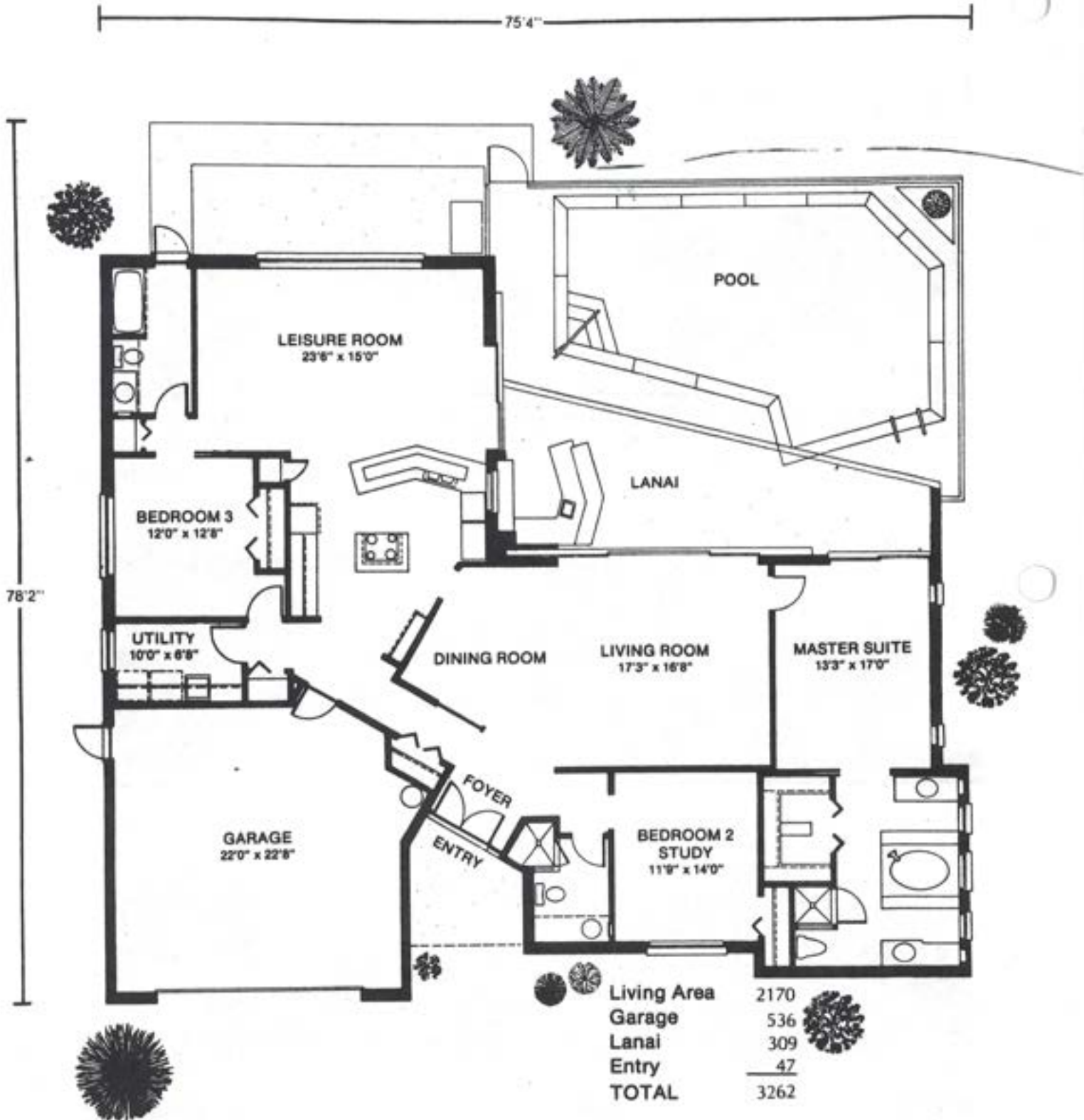


All floor plans are the property of U.S. Home, Rutenberg Division, and are copyrighted. Due to normal construction tolerances all dimensions are approximate. Room sizes are taken from paint surface to paint surface. Floor plan and features are subject to change without notice, please ask your Rutenberg Sales Consultant.



US·HOME

Islander III



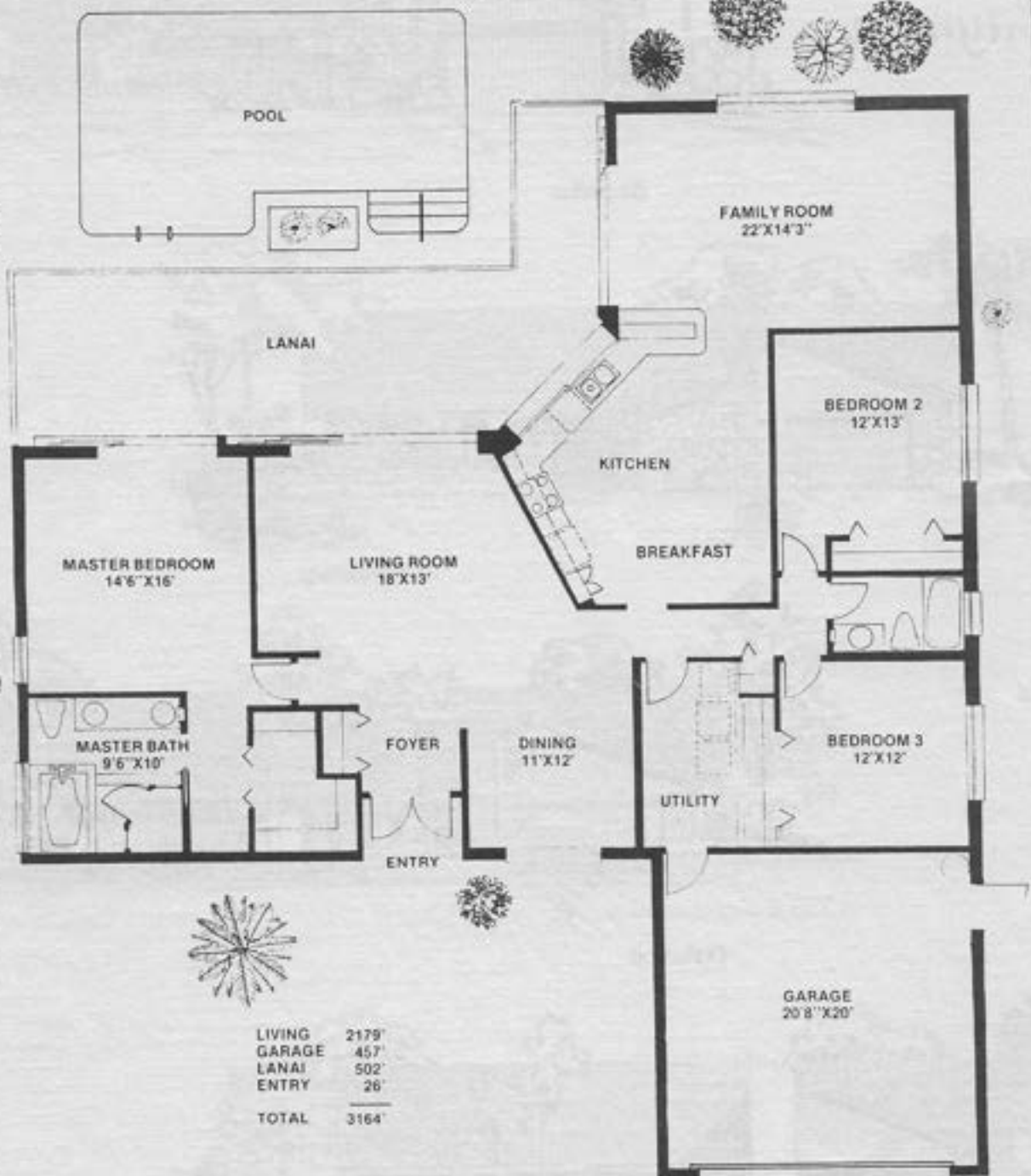
For Fine Living
**Rutenberg
 Homes**

All floor plans are the property of U.S. Home, Rutenberg Division, and are copyrighted. Due to normal construction tolerances all dimensions are approximate. Room sizes are taken from point surface to point surface. Floor plan and features are subject to change without notice, please ask your Rutenberg Sales Consultant.



Cayman

62'



70'

LIVING	2179'
GARAGE	457'
LANAI	502'
ENTRY	26'
TOTAL	3164'

**Rutenberg
Homes**

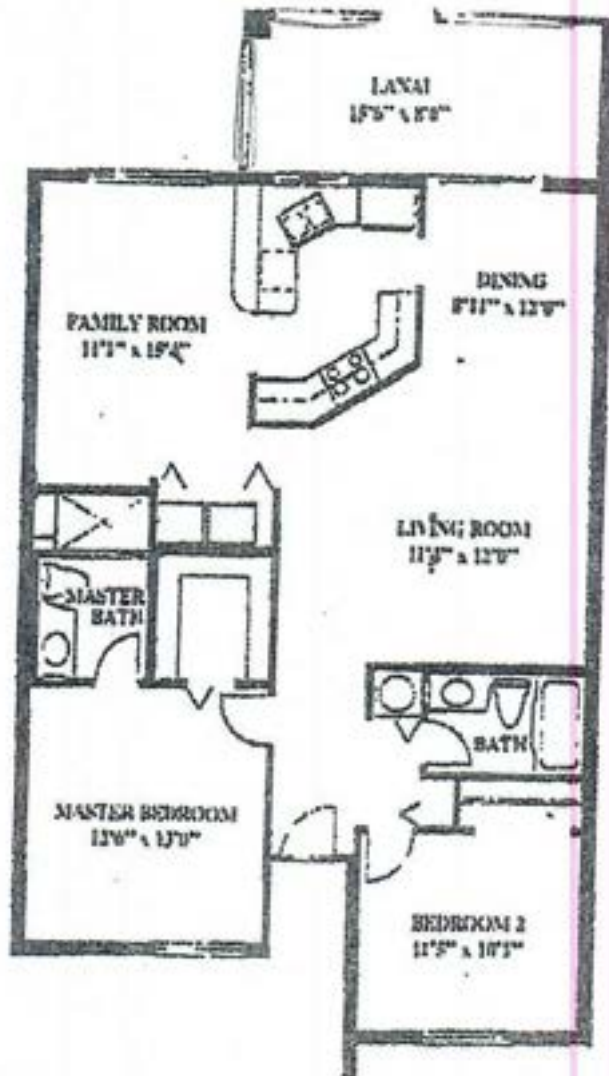
All floor plans are the property of U.S. Home, Rutenberg Division, and are copyrighted. Due to normal construction tolerances all dimensions are approximate. Room sizes are taken from paint surface to paint surface. Floor plan and features are subject to change without notice, please ask your Rutenberg Sales Consultant.



US·Home

FOX CLUB
2 BEDROOM + DEN

GOLF COURSE BLUE 7 GREEN
LAKE SURROUNDS 2 SIDES

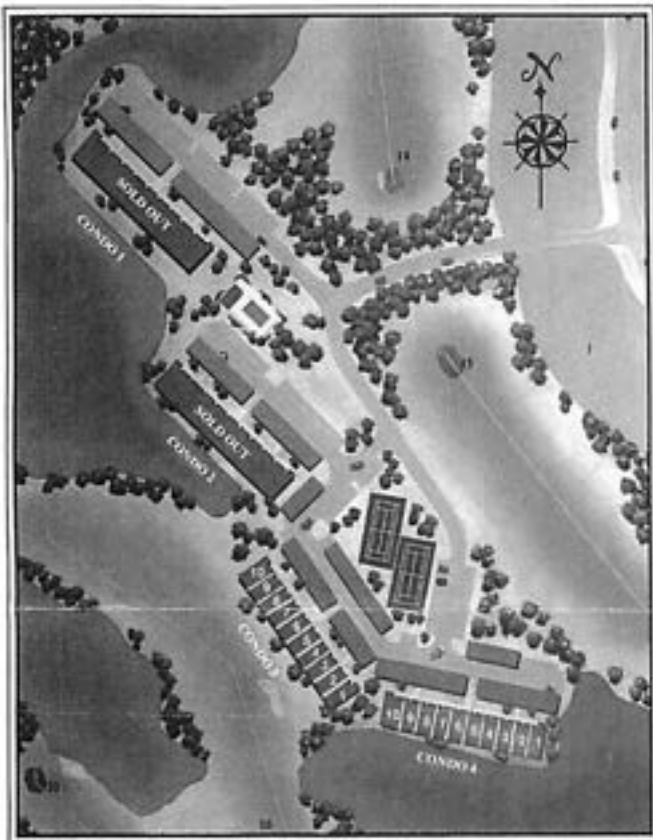


CARPOT & STORAGE
IMMEDIATELY OUR FRONT



SQUARE FOOTAGE

Living Area	1,054
Land Area	864
Total Area	1,918



Only 4 miles from the lovely gulfshore beaches, our notable condominiums in Foxhaven are surrounded by glistening lakes, the championship golf course, and offer covered parking. On site amenities include heated pool, jacuzzi, and two tennis courts.

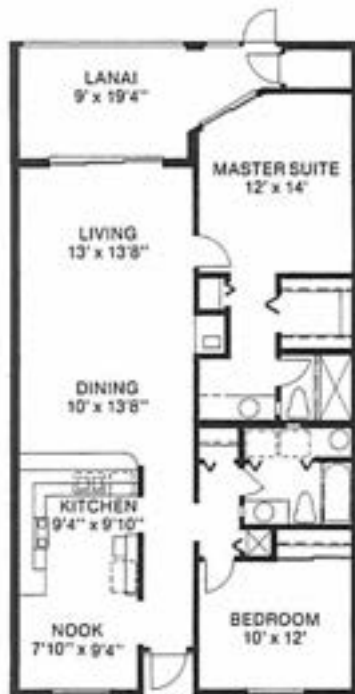
Our residences, constructed with the quality and reliability of U.S.Home/Rutenberg are presented in a 2 bedroom, 2 bath format with 2 distinct designs to choose from.

All this including equity membership in the stunning Foxfire Country Club, with golf course designed by the renowned Arthur Hills and Associates.



“A”

LIVING 1280'
LANAI 180'
ENTRY 11'
TOTAL 1451'

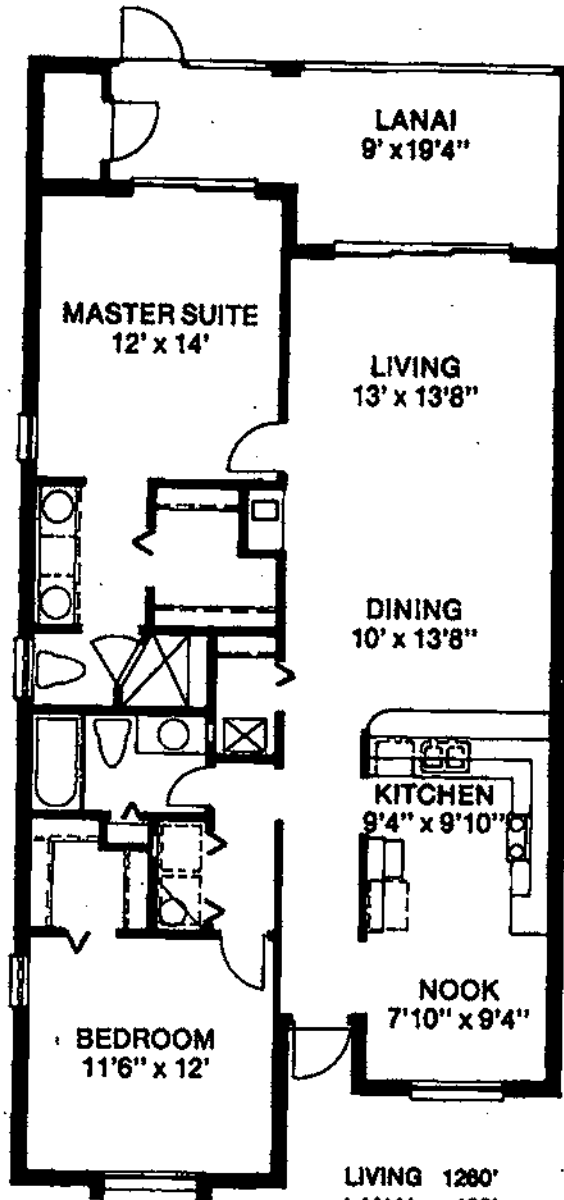


“B”

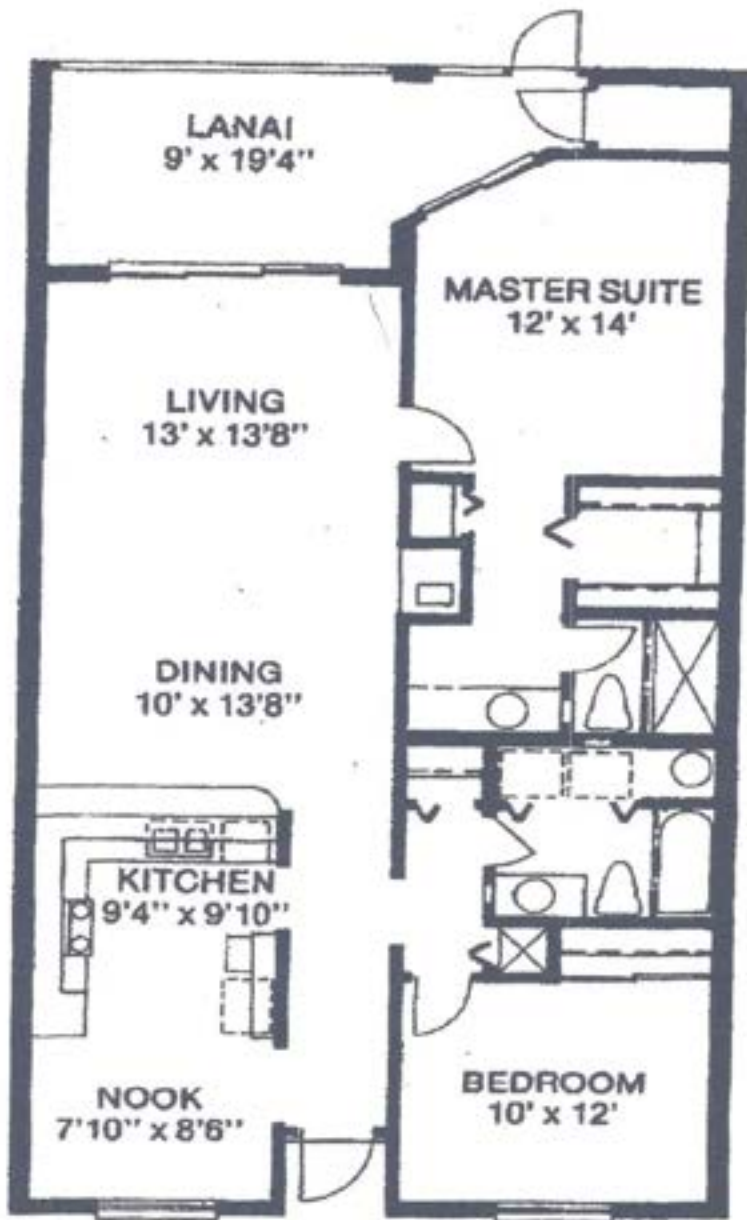
LIVING 1218'
LANAI 130'
ENTRY 16'
TOTAL 1364'

Oral representations cannot be relied upon as correctly stating representation of the developer. For correct representations reference should be made to this brochure and to the document required by Florida Statutes section 718.503, to be furnished by developer to a buyer or lessee.

“A”



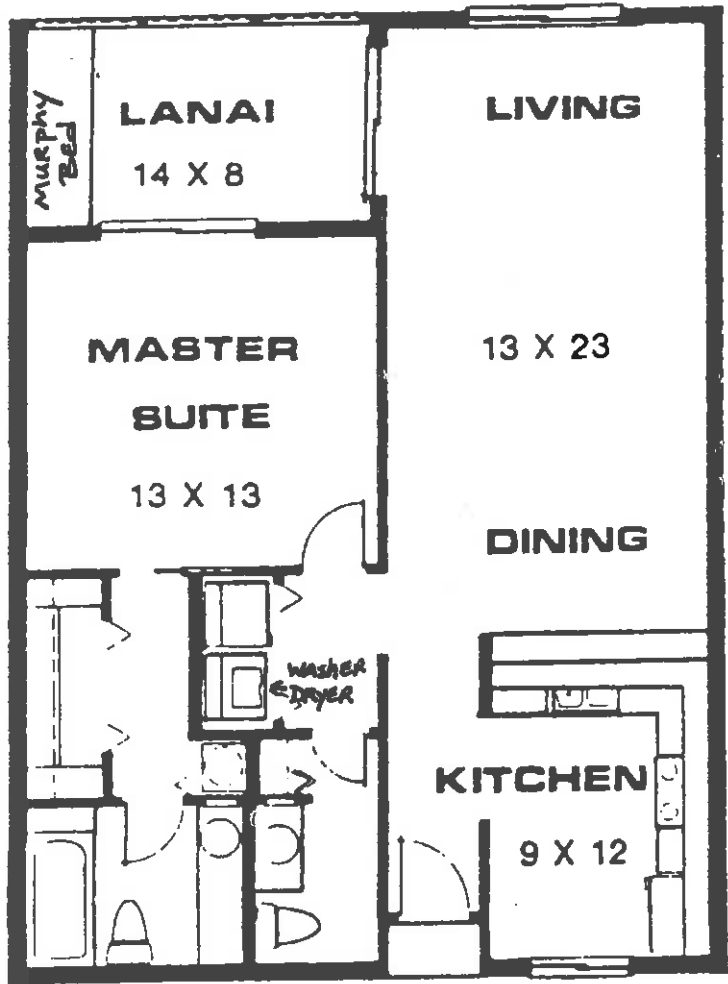
LIVING 1280'
LANAI 180'
ENTRY 11'
TOTAL 1451'



LIVING 1218'
LANAI 135'
ENTRY 16'
TOTAL 1369'



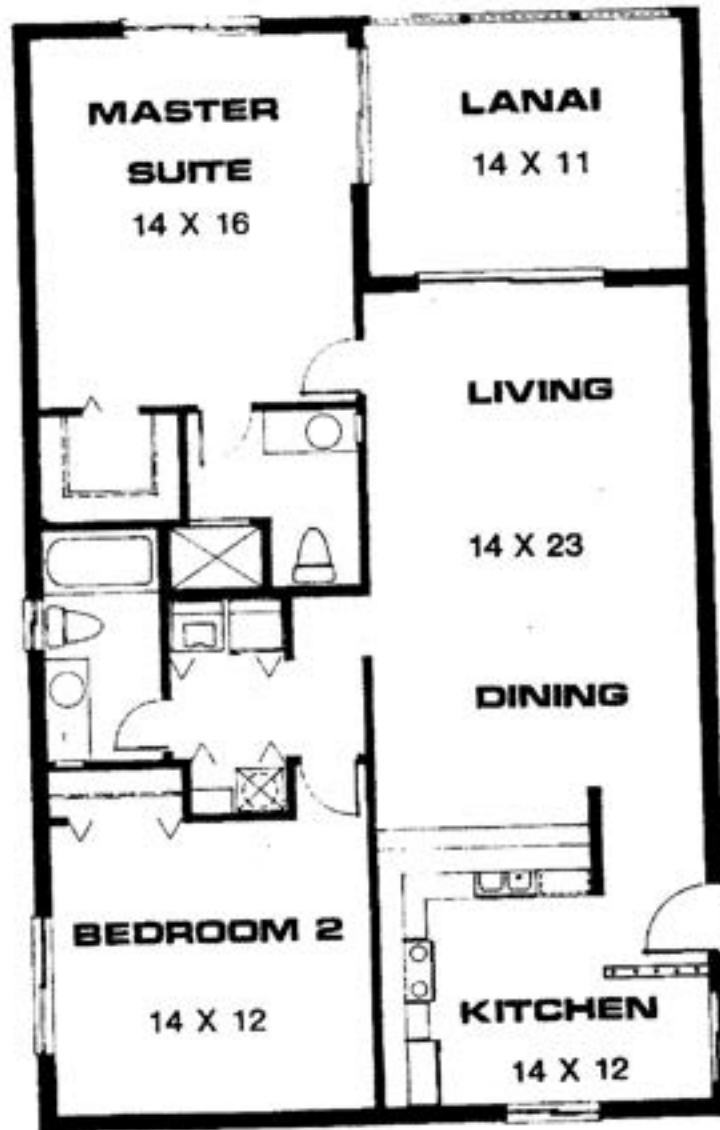
FOX Hollow



Cypress

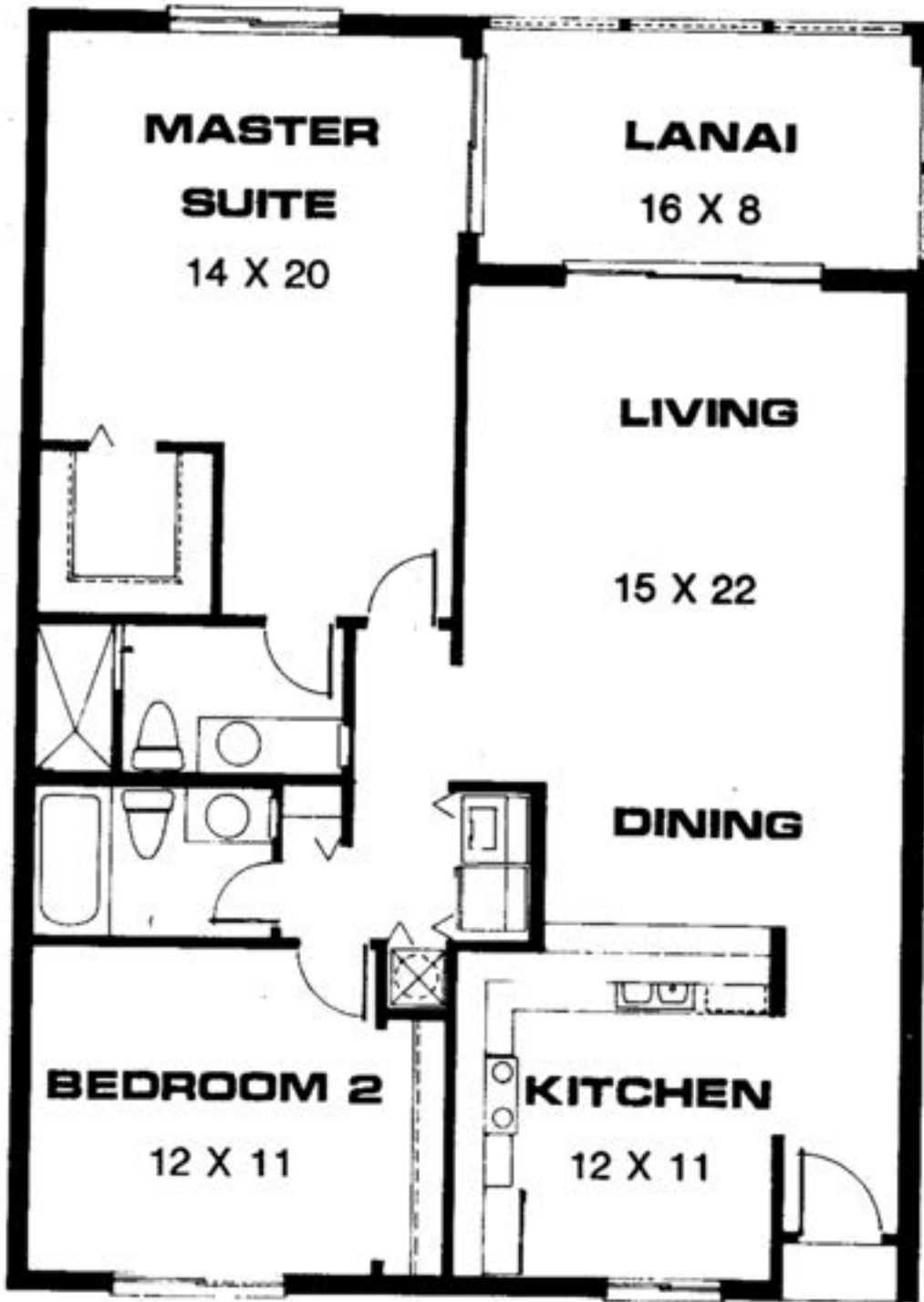


Ashwood

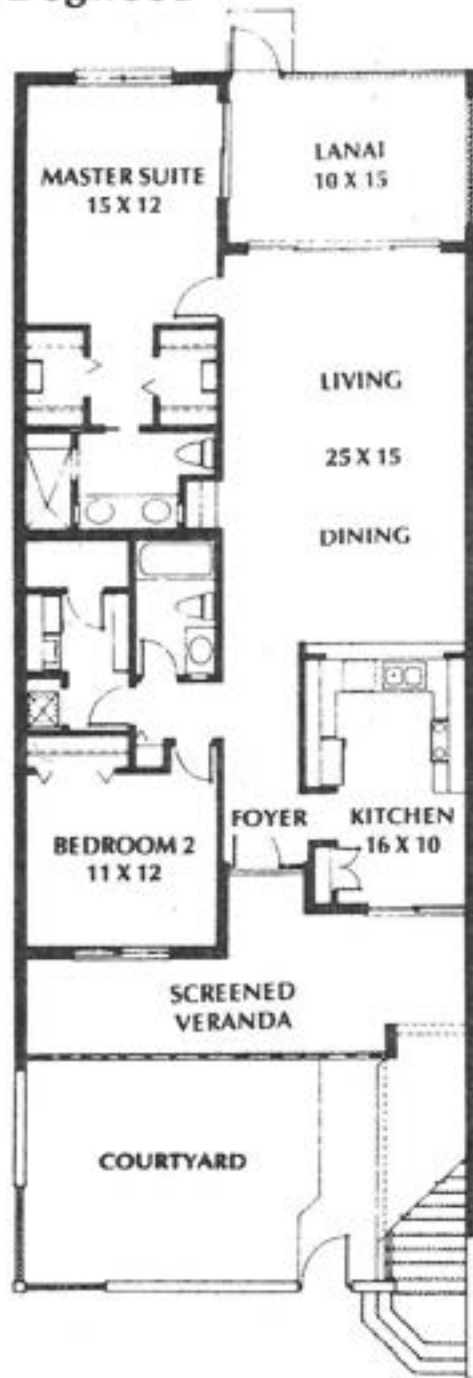


1 of 1

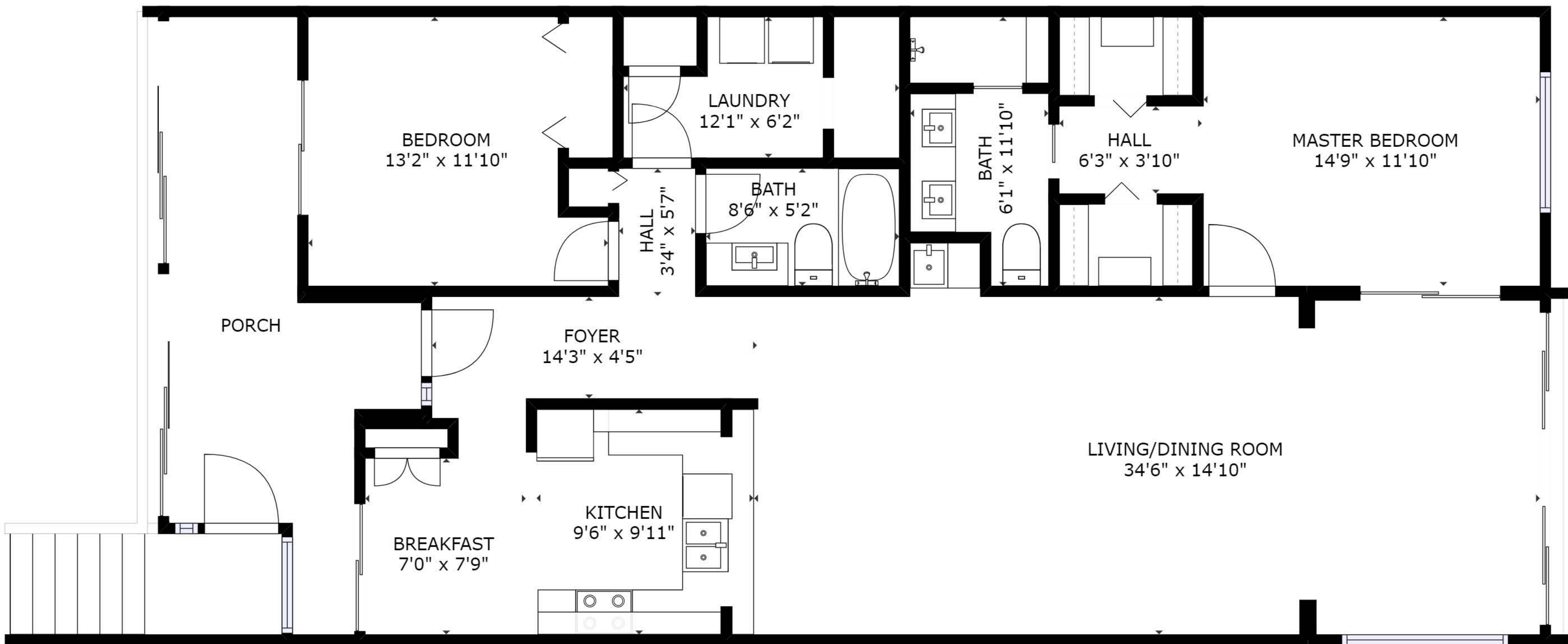
Cypress



Dogwood



ALL DIMENSIONS ARE APPROXIMATE



FLOOR 1

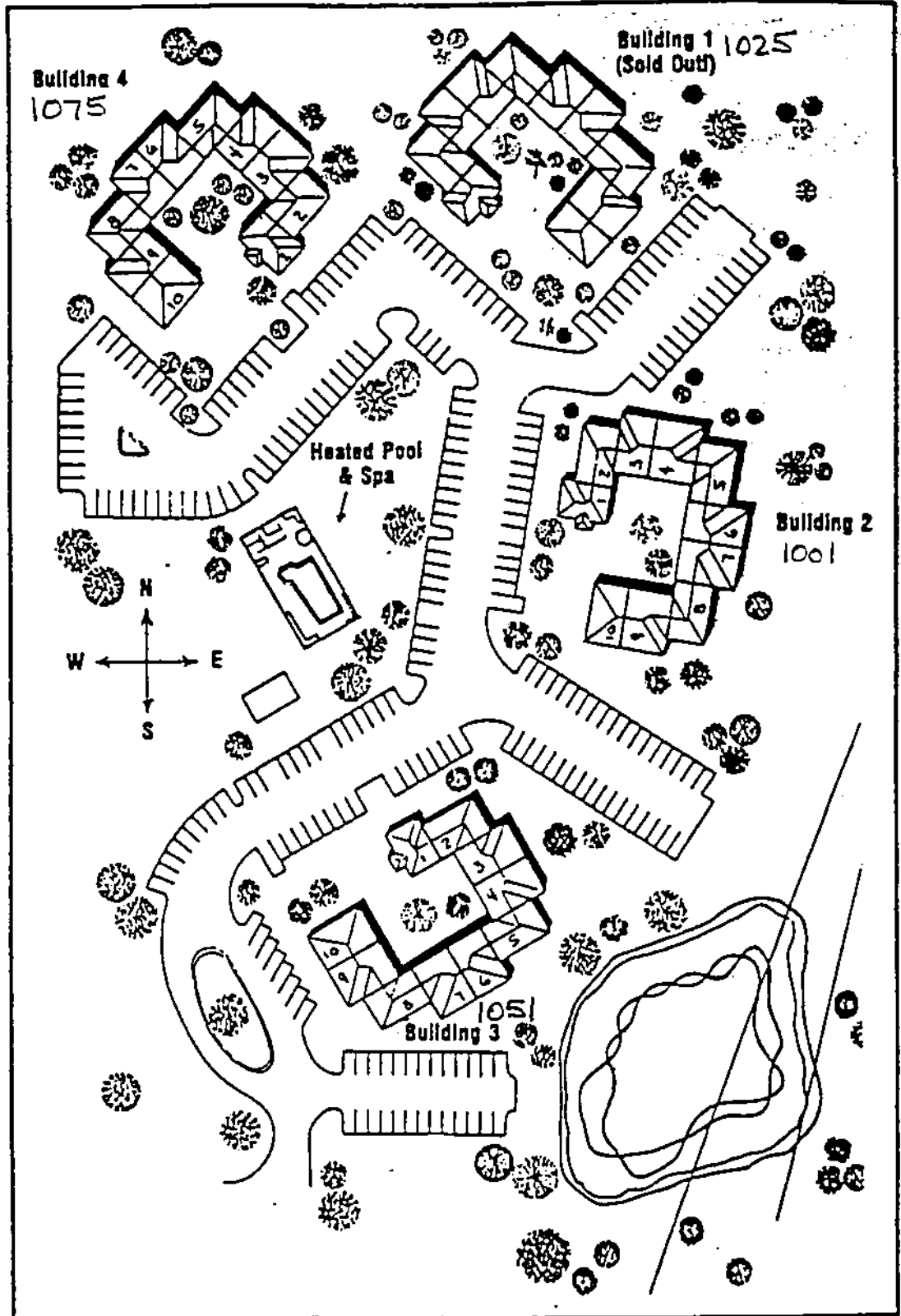
GROSS INTERNAL AREA
 FLOOR 1 : 1438 sq ft, EXCLUDED AREAS :
 PORCH: 205 sq ft
 TOTAL: 1438 sq ft

SIZES AND DIMENSIONS ARE APPROXIMATE, ACTUAL MAY VARY.

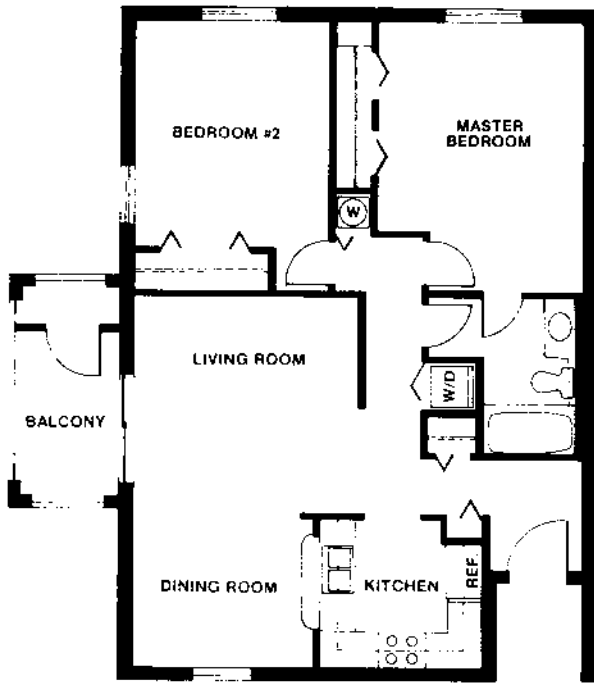
9/96

Fox Moor Zone 11-1

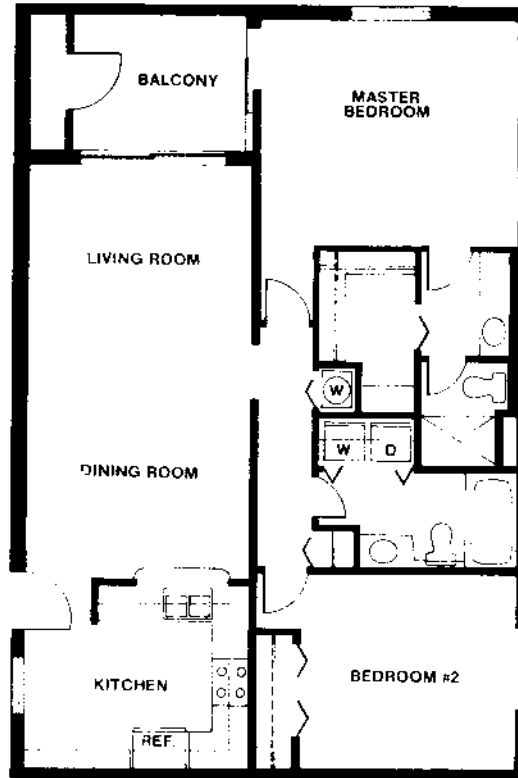
1001-75 Foxfire Ln



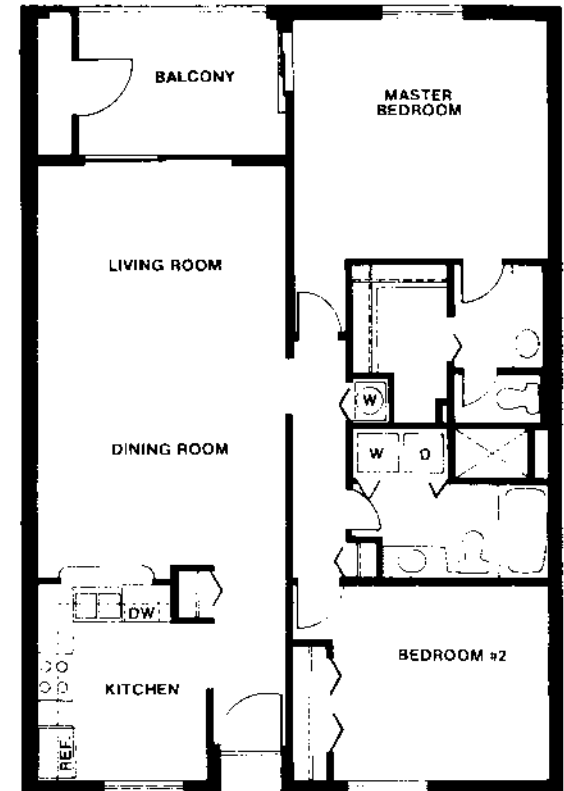
Each Bldg HAS 3 floors
1st Floor # 100 - 110
2nd Floor # 200 - 210
3rd Floor # 300 - 310



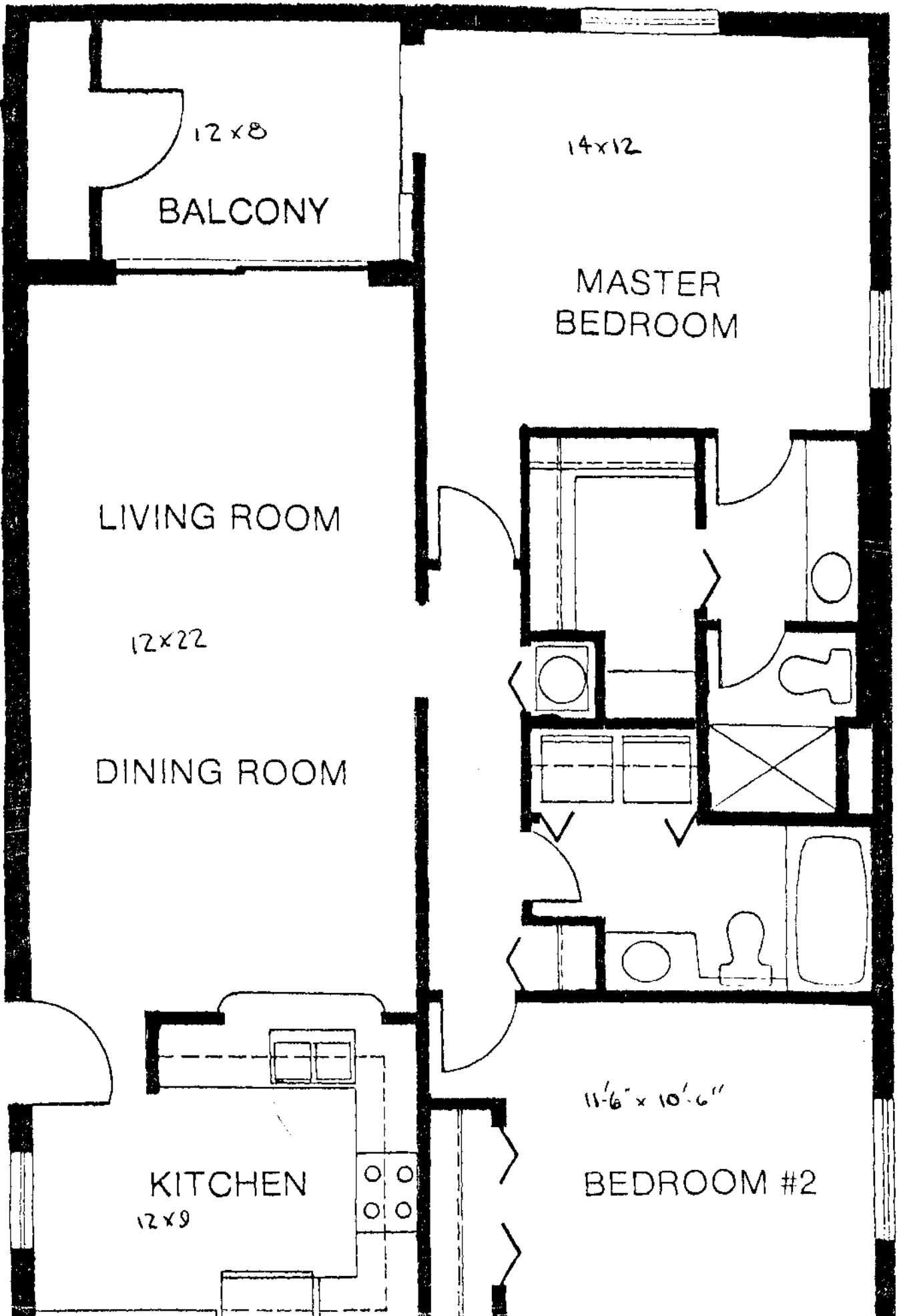
LIVING AREA 915'
 BALCONY 84'
 TOTAL 994'

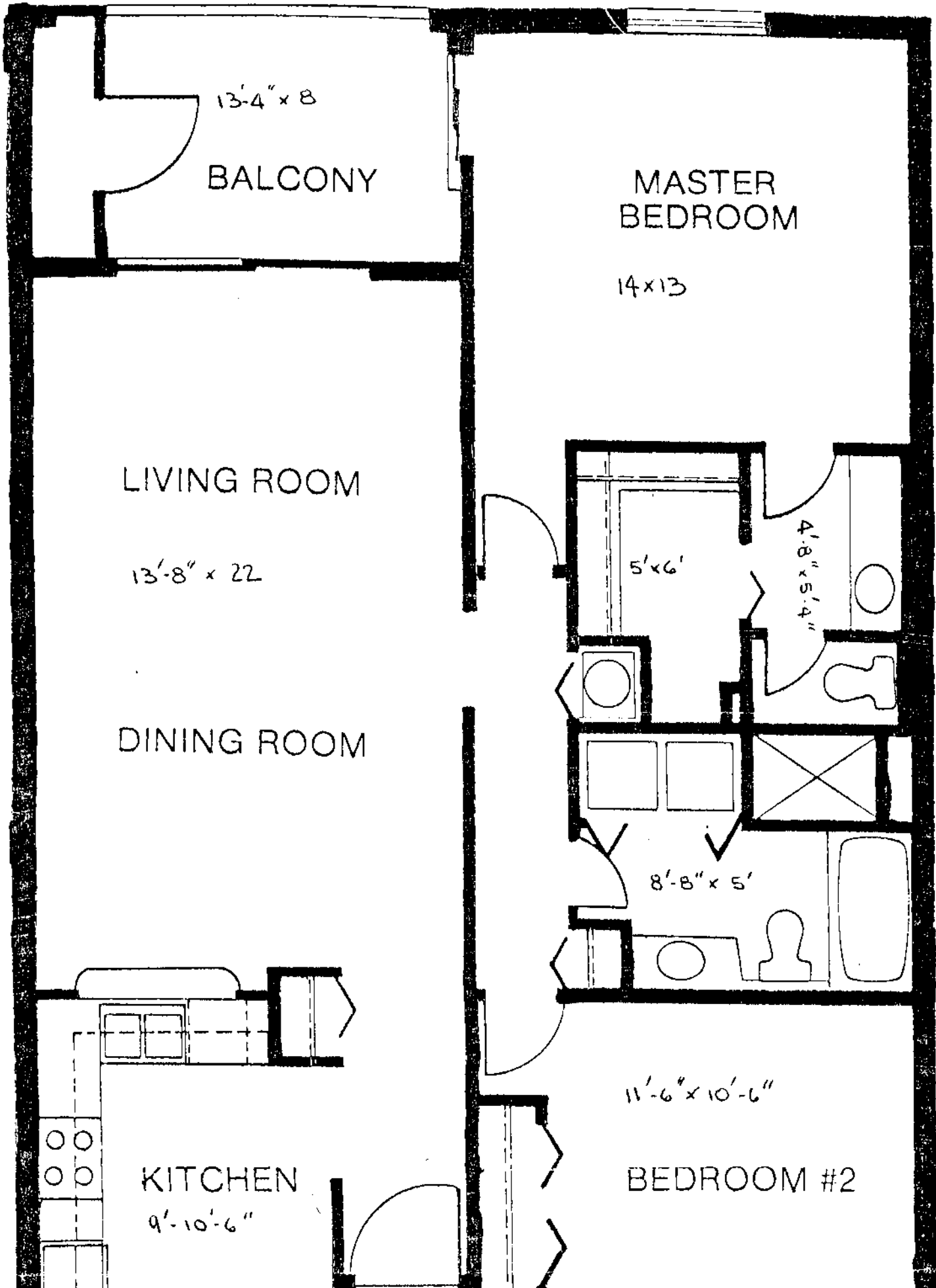


LIVING AREA 1050'
 BALCONY 100'
 TOTAL 1150'



LIVING AREA 1105'
 BALCONY 112'
 TOTAL 1217'





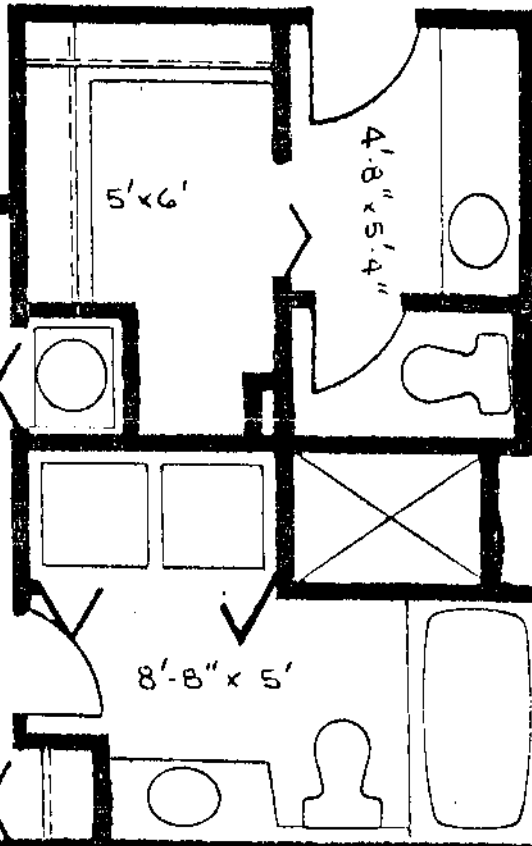
13'-4" x 8
BALCONY

MASTER
BEDROOM
14 x 13

LIVING ROOM
13'-8" x 22

DINING ROOM

KITCHEN
9'-10'-6"



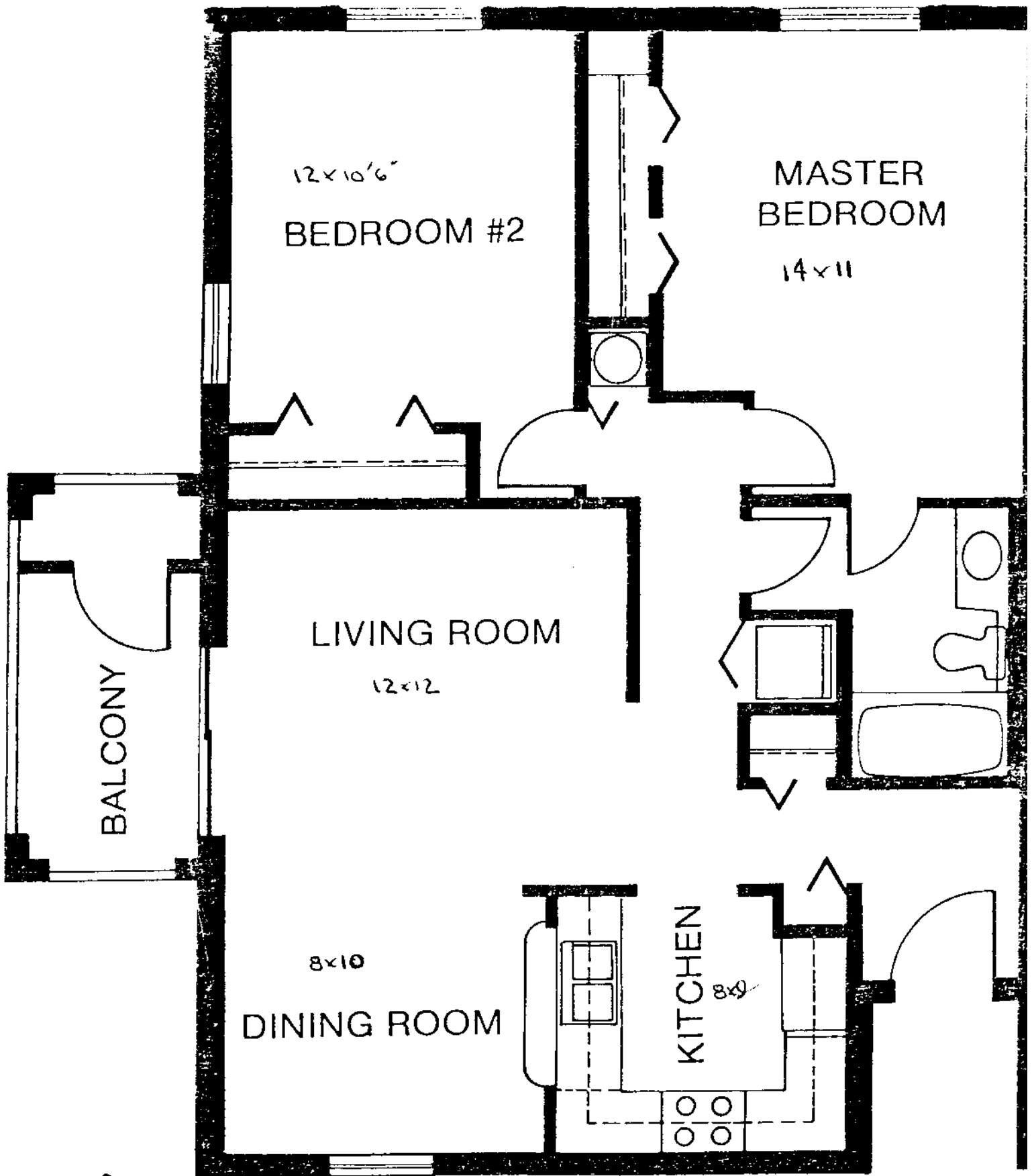
5' x 6'

4'-8" x 5'-4"


8'-8" x 5'

11'-6" x 10'-6"

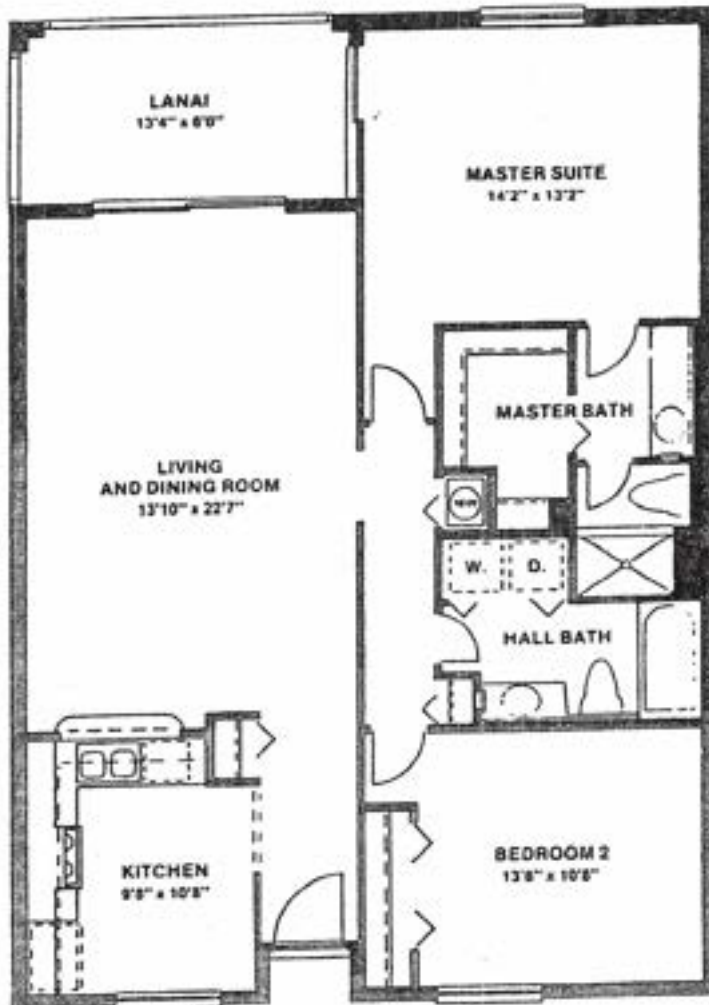
BEDROOM #2



LIVING AREA	915'
BALCONY	84'
TOTAL	<hr/> 994'



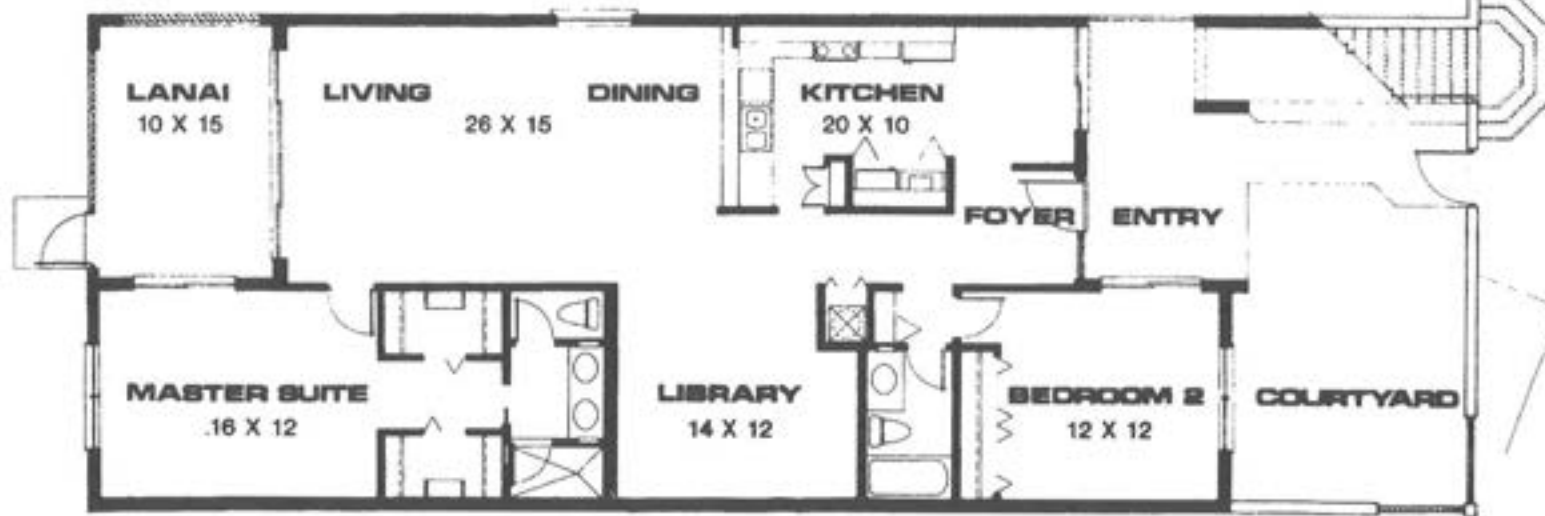
foxwood
CONDOMINIUMS AT FOXFIRE



UNIT "A"

Living Area	1,106
Lanai Area	109
Entry Area	8
TOTAL AREA	1,223

Elm



Dogwood



America calls us home.®

US·HOME

LISTED ON THE NEW YORK STOCK EXCHANGE



EQUAL HOUSING
OPPORTUNITY

ALL DIMENSIONS AS SHOWN IN THE SALES LITERATURE AND AS OBSERVED IN THE MODELS ARE APPROXIMATE AND MAY VARY SLIGHTLY WITH THE ACTUAL CONSTRUCTION. U.S. HOME RESERVES THE RIGHT TO SUBSTITUTE BRANDS OR MATERIALS FOR SIMILAR ONES DEPENDING UPON AVAILABILITY WITHOUT ADVANCE NOTICE TO THE BUYER.