

Floor Plans

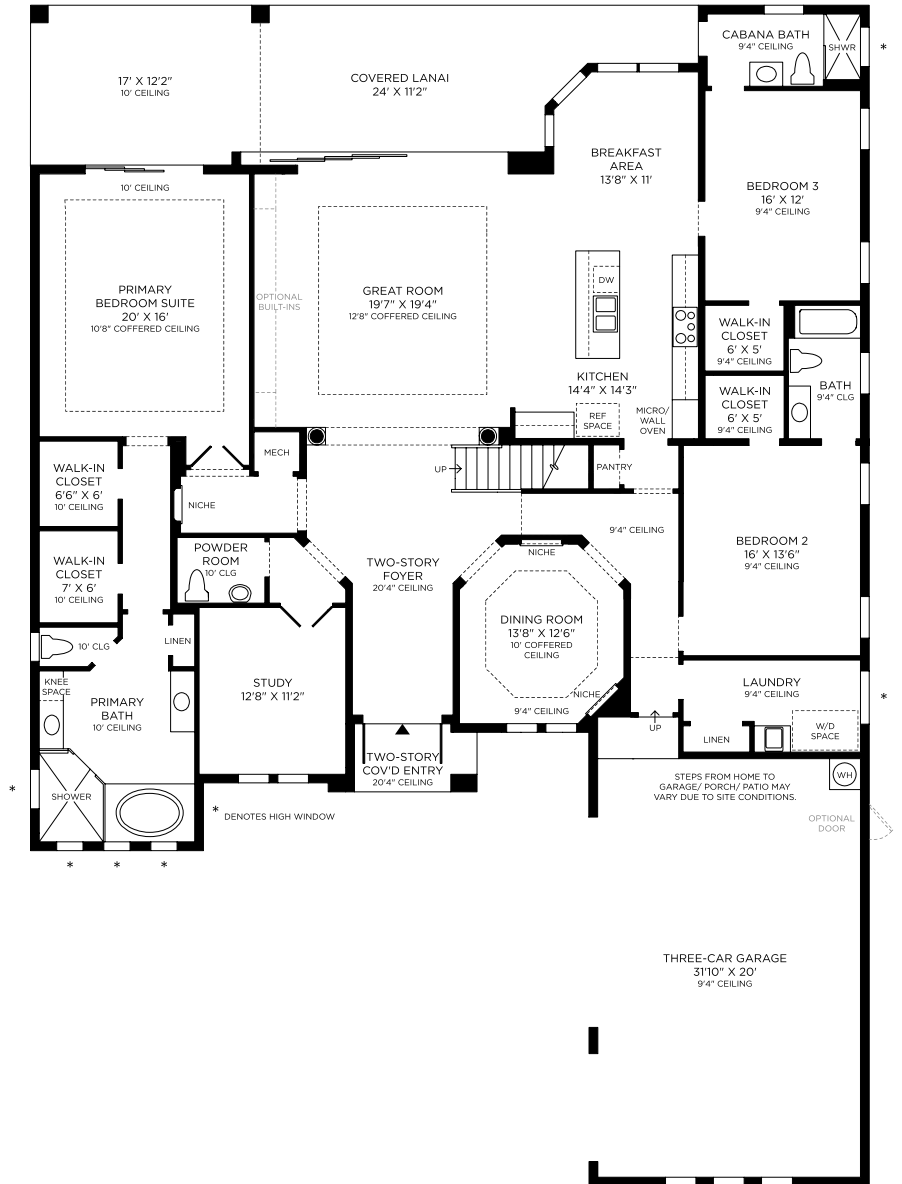
These floor plans have been assembled as a resource for you. They may not be inclusive of every home in the community.

Please note that over time, owners may make modifications to spaces that may not be captured in these original floor plans.

Renderings are not a guarantee of space measurement. Interested parties should verify through their own secured services.

Aragon

First Floor

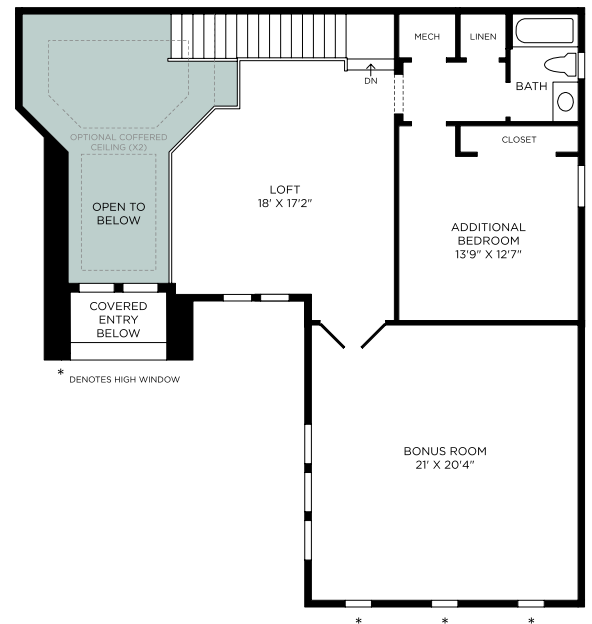


Selected Options:

Finished Loft with Bedroom and Bathroom

Aragon

Second Floor

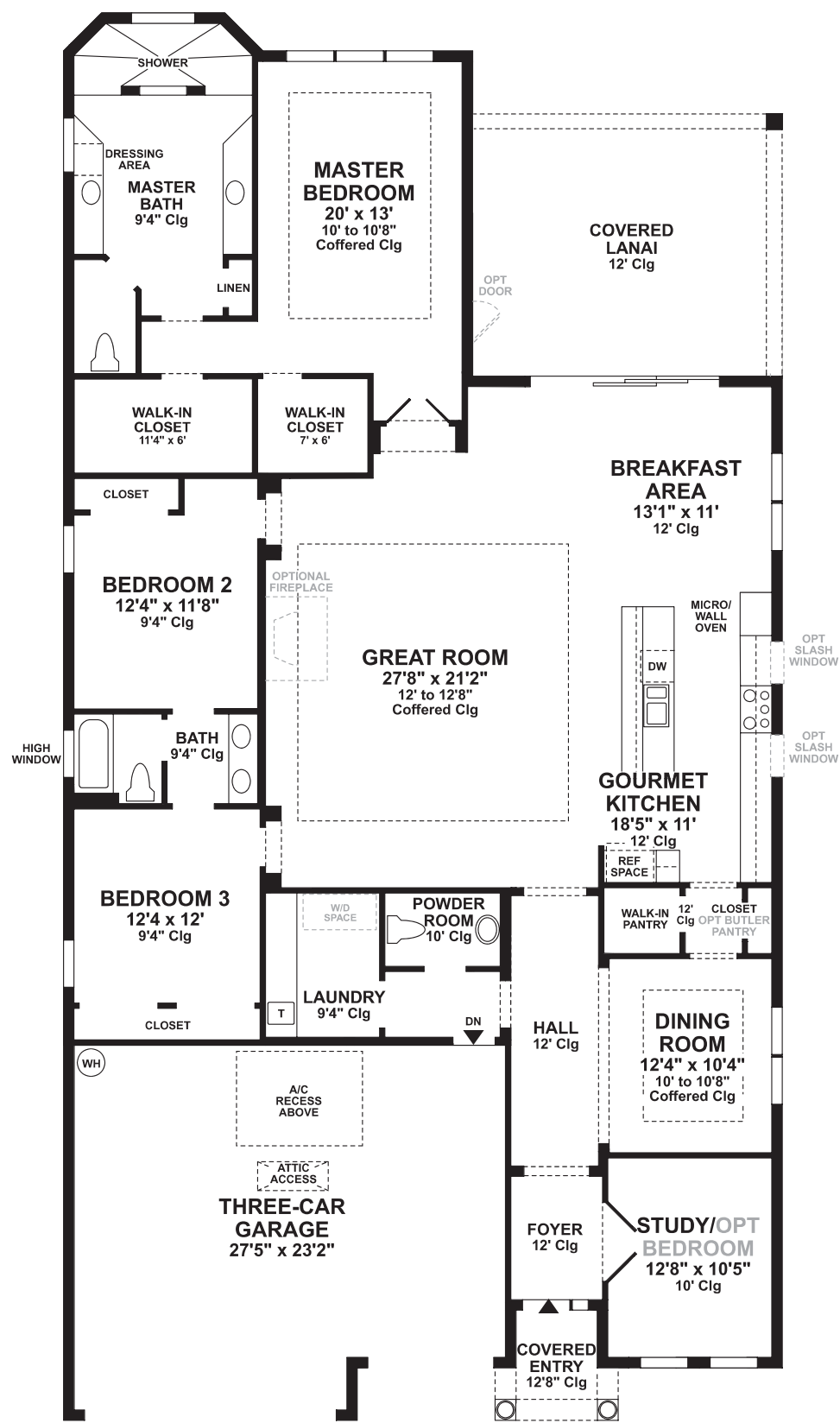


Selected Options:

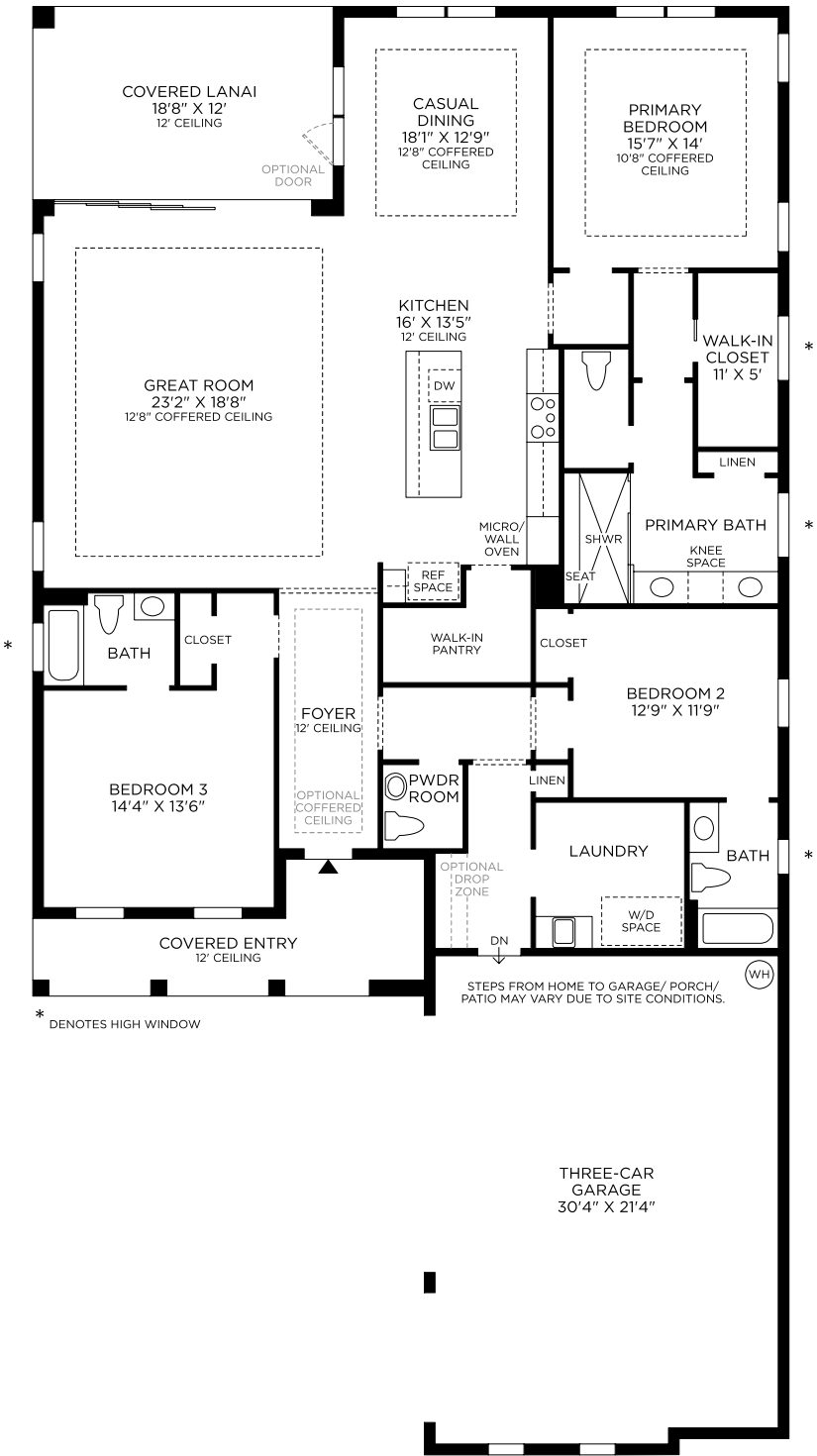
Finished Loft with Bedroom and
Bathroom
Bonus Room

These renderings are intended for illustrative purposes only. Images are copyrighted and may not be distributed, modified or reproduced without prior written permission. Information is provided "as is", without warranty, either express or implied, including, but not limited to, the implied warranties of merchantability, fitness for a particular purpose, or non-infringement. Access and use of the images and affiliated products or links are subject to all applicable laws relating to the use of web-based information, copyrighted materials and intellectual property. Site plans, floorplans, community maps, photos and/or computer-generated renderings have been provided for illustrative purposes, are conceptual in nature, and are merely an artist's rendition of actual products intended for example only. These renderings may not accurately represent the condition, size or design of the actual items being represented.

The Athena at Azure at Hacienda Lakes - Heritage Collection



Avery
First Floor



No Options Selected

These renderings are intended for illustrative purposes only. Images are copyrighted and may not be distributed, modified or reproduced without prior written permission. Information is provided "as is", without warranty, either express or implied, including, but not limited to, the implied warranties of merchantability, fitness for a particular purpose, or non-infringement. Access and use of the images and affiliated products or links are subject to all applicable laws relating to the use of web-based information, copyrighted materials and intellectual property. Site plans, floorplans, community maps, photos and/or computer-generated renderings have been provided for illustrative purposes, are conceptual in nature, and are merely an artist's rendition of actual products intended for example only. These renderings may not accurately represent the condition, size or design of the actual items being represented.

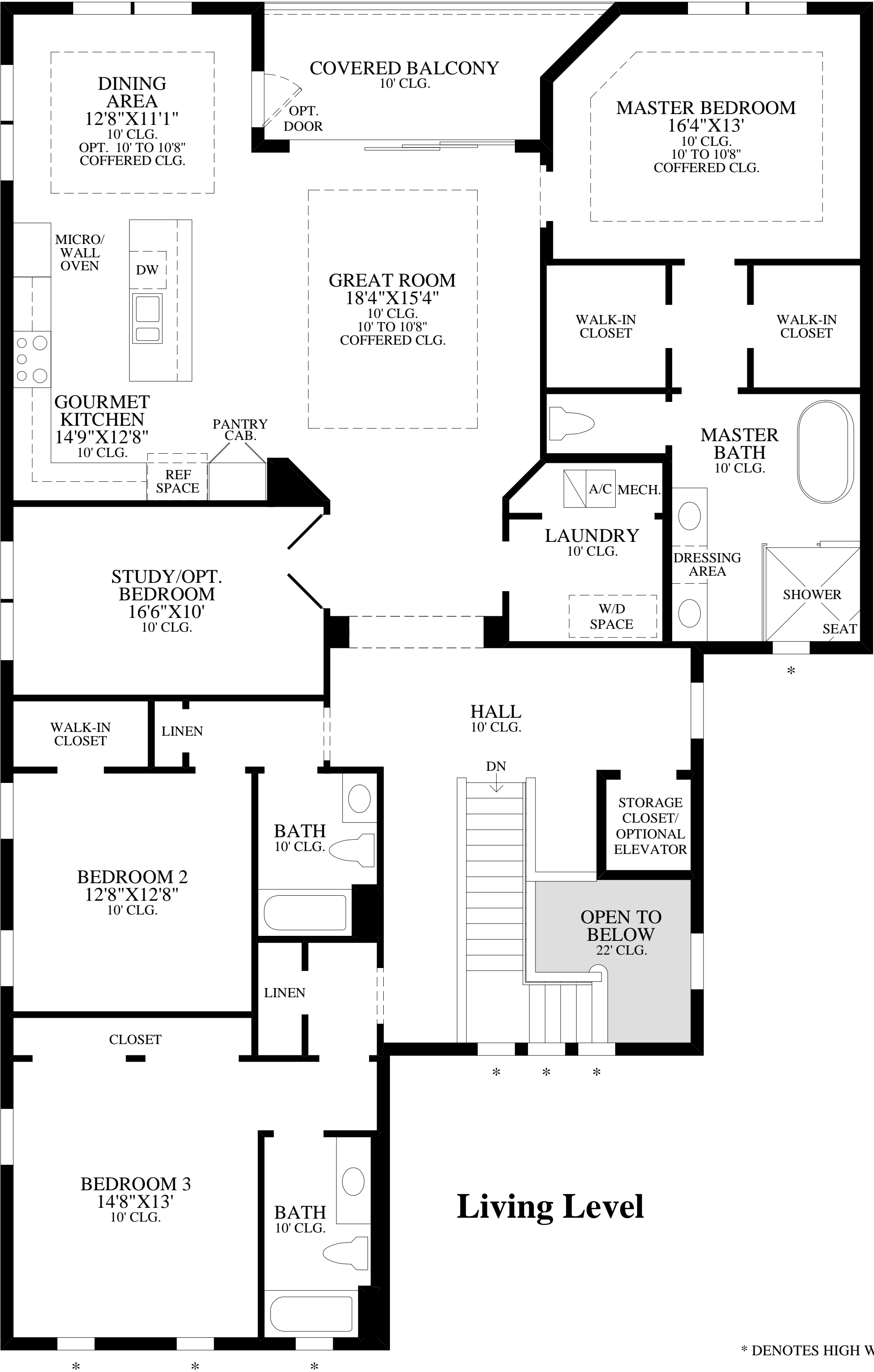
Designer Appointed Features | STRUCTURAL OPTIONS

Designer Appointed Features are home details and finishes curated by the talented design professionals responsible for the distinctive looks found in our model homes.



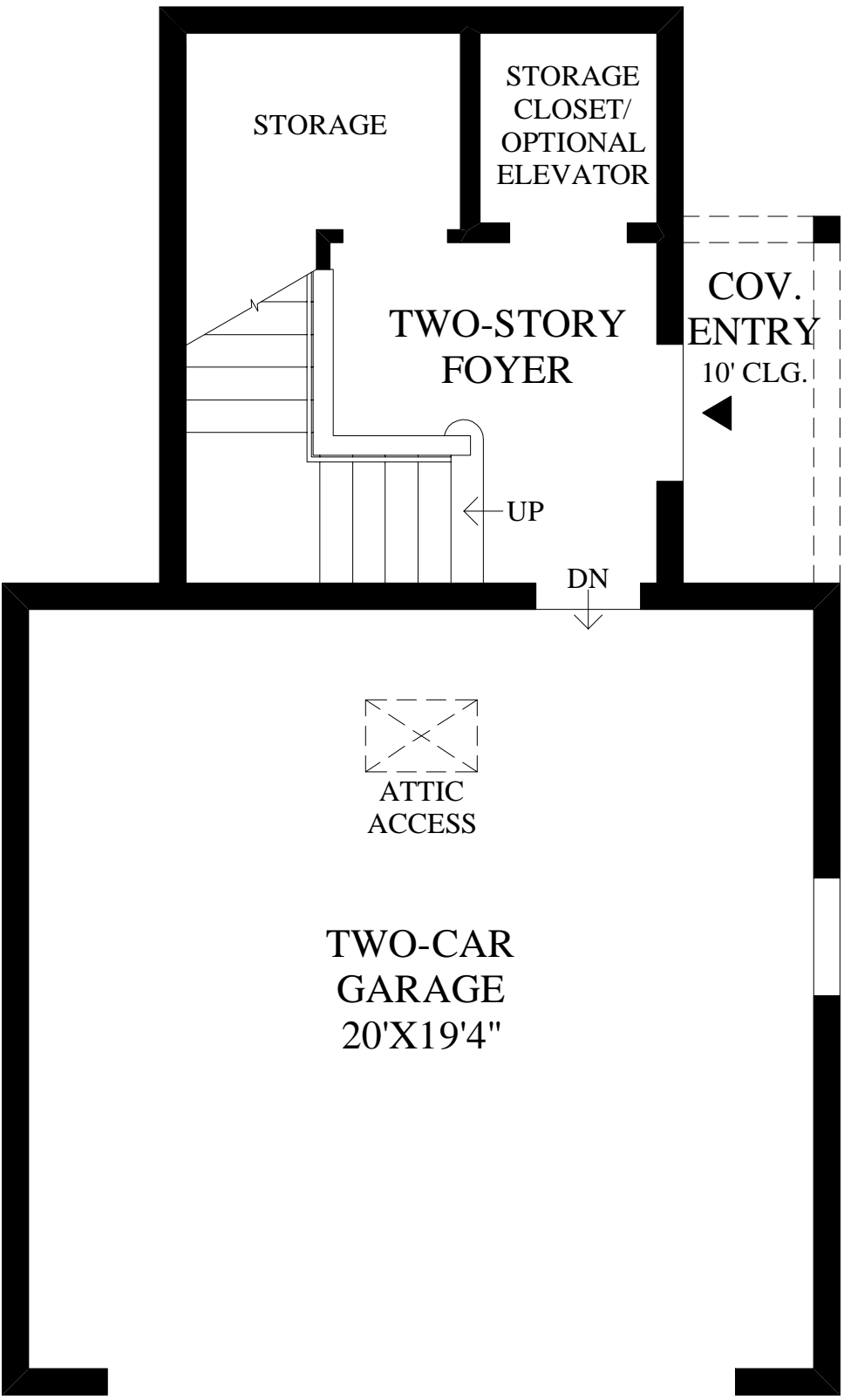
- 1 OPTIONAL DROP ZONE**
Structural option: PC263081
- 2 IMPACT GLASS WINDOWS (NOT SHOWN)**
Structural option: PC1616
- 3 ADDITIONAL COVERED LANAI (NOT SHOWN)**
Structural option: PC263042
- 4 OUTDOOR KITCHEN PREP PACKAGE (NOT SHOWN)**
Structural option: PC263069
- 5 CUSTOM POOL PACKAGE (NOT SHOWN)**
Structural option: C0103001
- 6 ALTERNATE KITCHEN ISLAND (NOT SHOWN)**
Structural option: C0103001
- 7 WND ADD WINDOW (NOT SHOWN)**
Structural option: C0103003





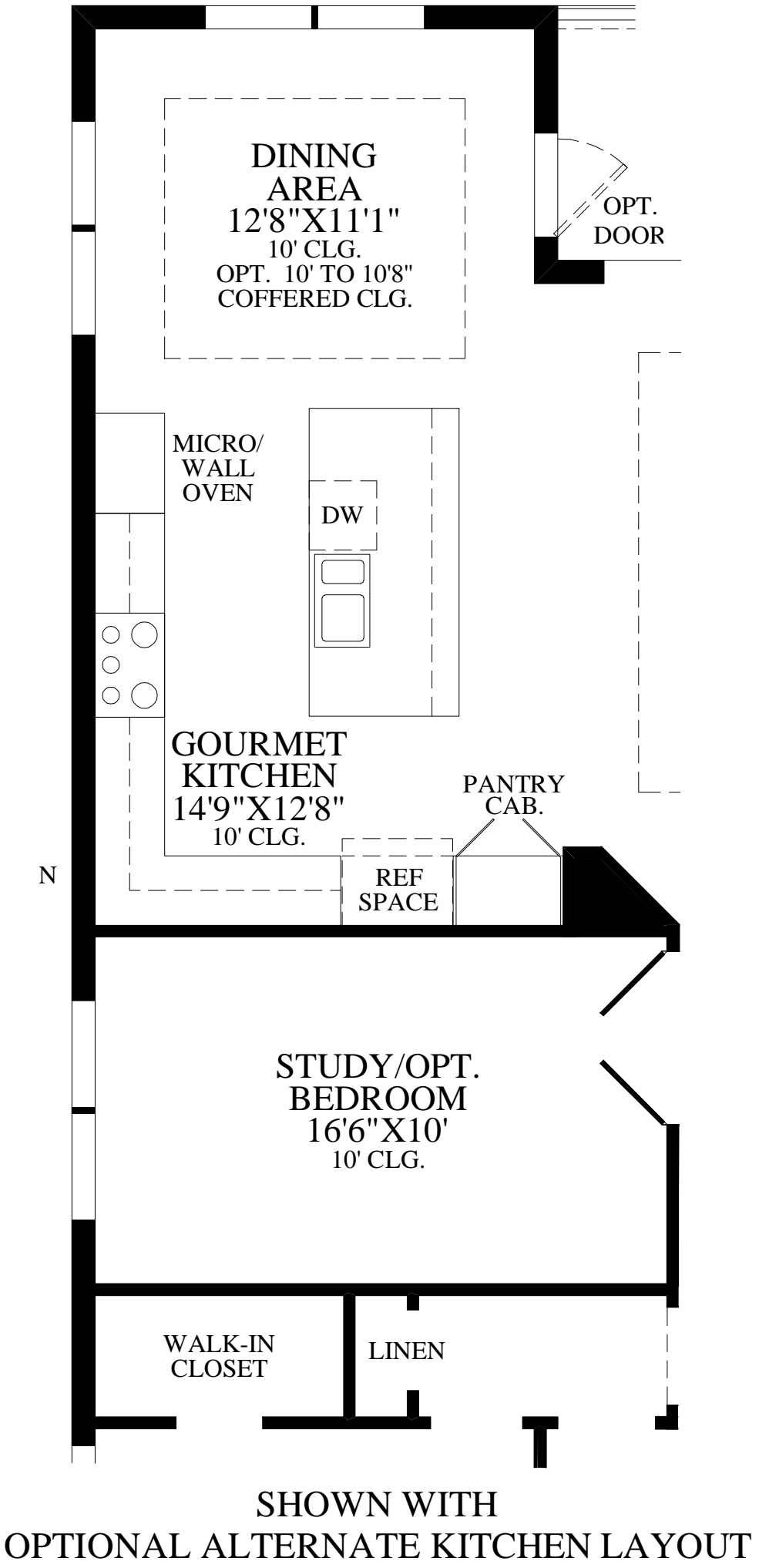
Living Level

* DENOTES HIGH WINDOW



Entry Level

COASTAL EXTERIOR DESIGN SHOWN



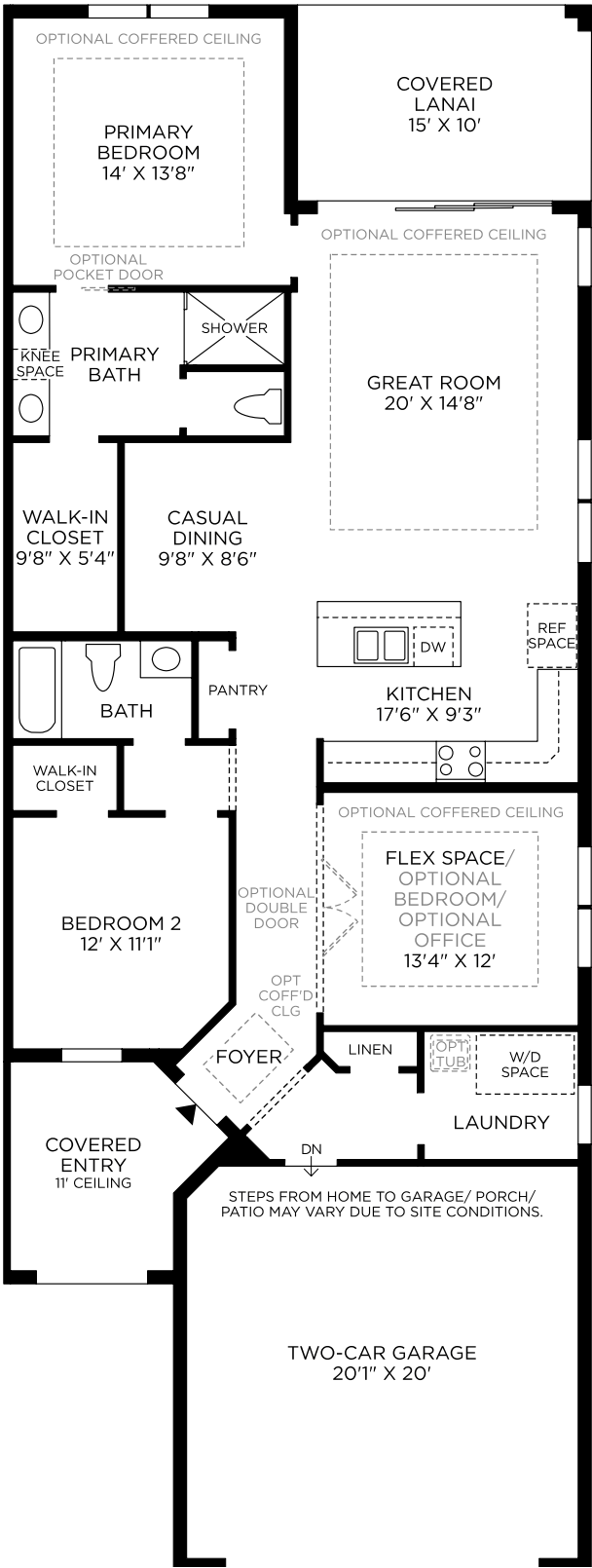
SHOWN WITH
OPTIONAL ALTERNATE KITCHEN LAYOUT

THE BARBADOS HIGHLIGHTS

• A covered entry leads to a two-story foyer with a spacious storage closet.	Air Conditioned Living Area	2611 sq. ft.
• The living area is conducive to entertaining with it's large great room, open layout, and direct access to the covered lanai.	Covered Balcony	116 sq. ft.
• The kitchen offers an island and adjacent sunlit dining area.	Covered Entry	37 sq. ft.
• The master bedroom includes two walk-in closets and a private bathroom with a large shower, a dual-sink vanity, and a private water closet.		

Baypointe

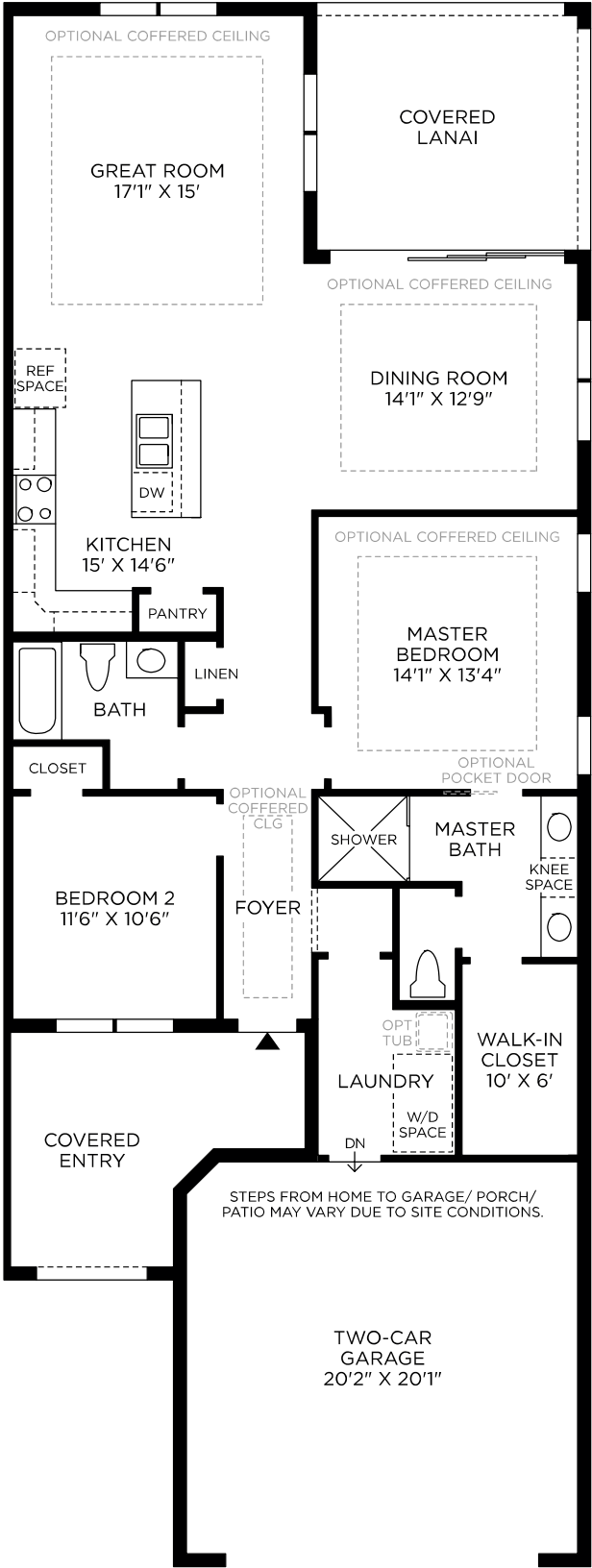
First Floor



No Options Selected

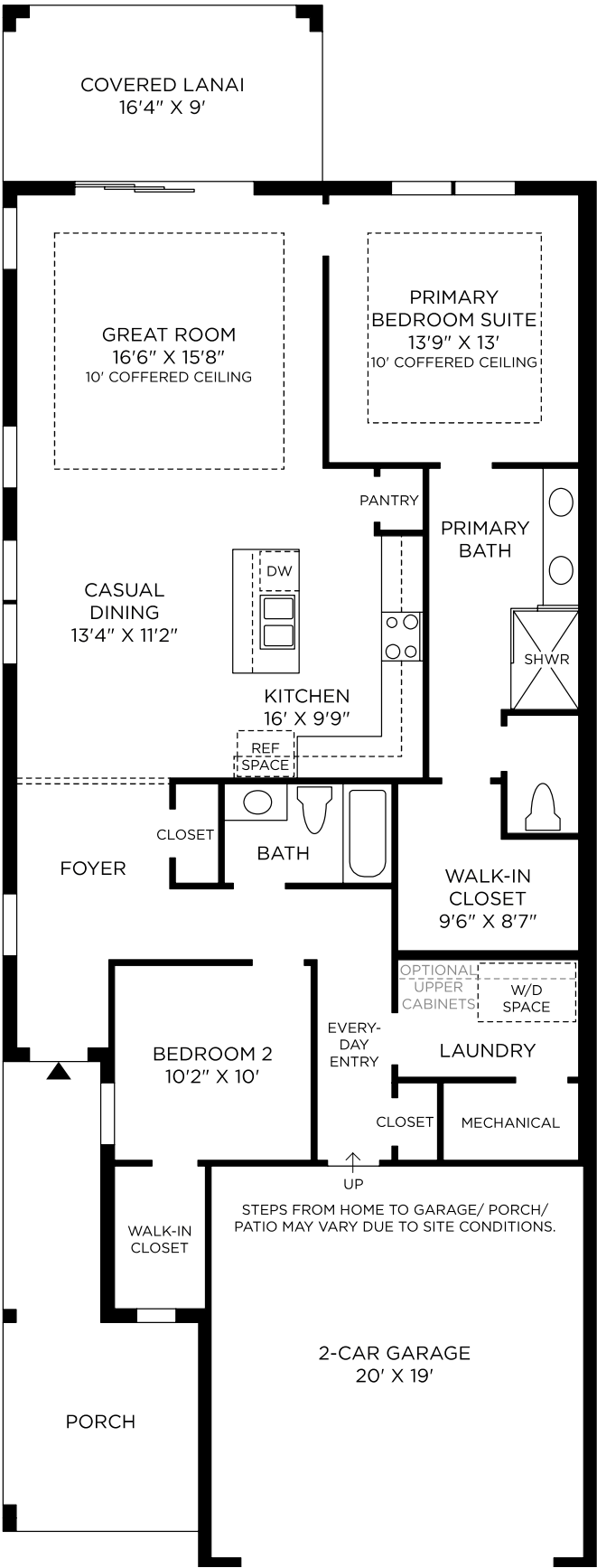
These renderings are intended for illustrative purposes only. Images are copyrighted and may not be distributed, modified or reproduced without prior written permission. Information is provided "as is", without warranty, either express or implied, including, but not limited to, the implied warranties of merchantability, fitness for a particular purpose, or non-infringement. Access and use of the images and affiliated products or links are subject to all applicable laws relating to the use of web-based information, copyrighted materials and intellectual property. Site plans, floorplans, community maps, photos and/or computer-generated renderings have been provided for illustrative purposes, are conceptual in nature, and are merely an artist's rendition of actual products intended for example only. These renderings may not accurately represent the condition, size or design of the actual items being represented.

The Heron at Azure at Hacienda Lakes - Villa Collection



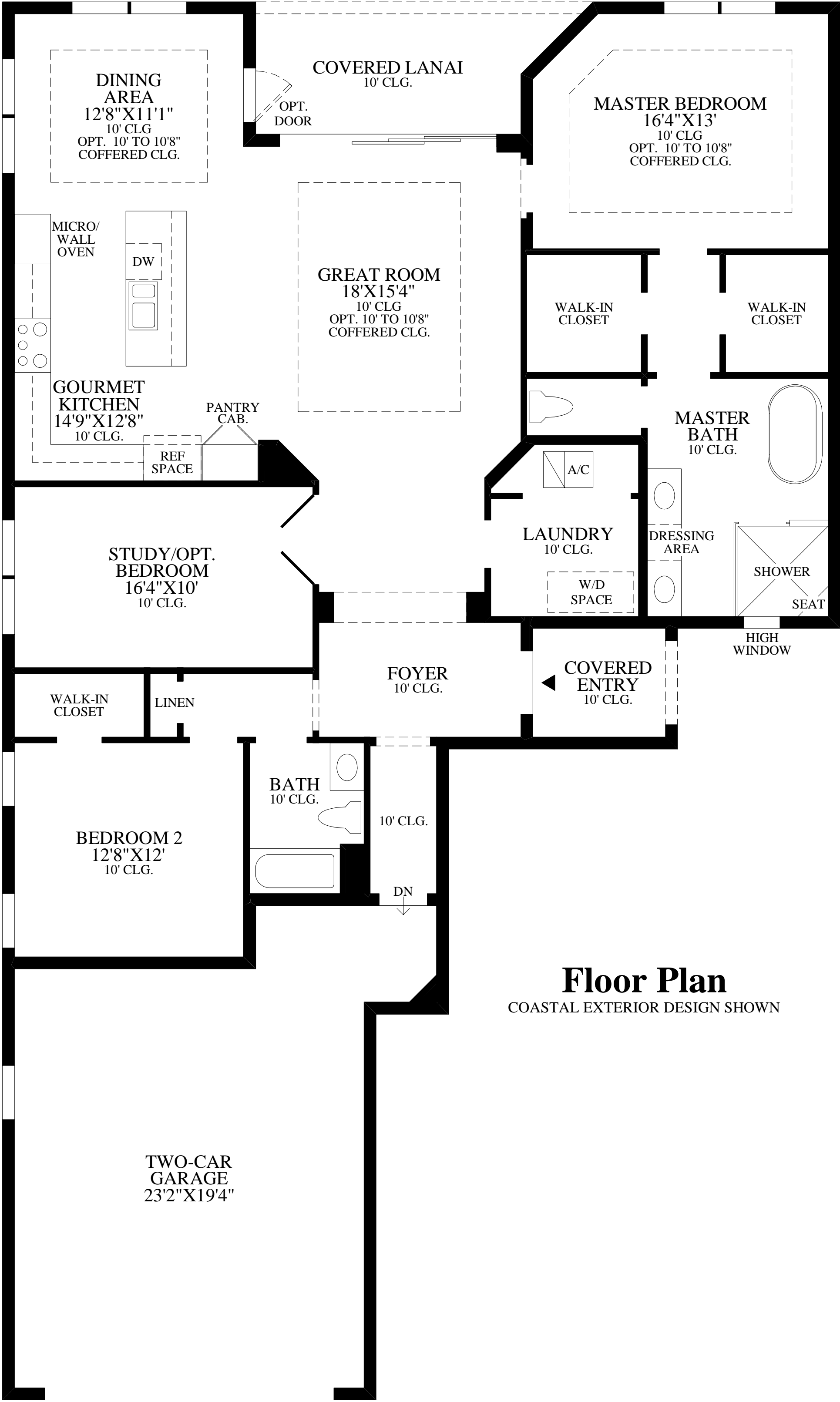
Langwell

First Floor



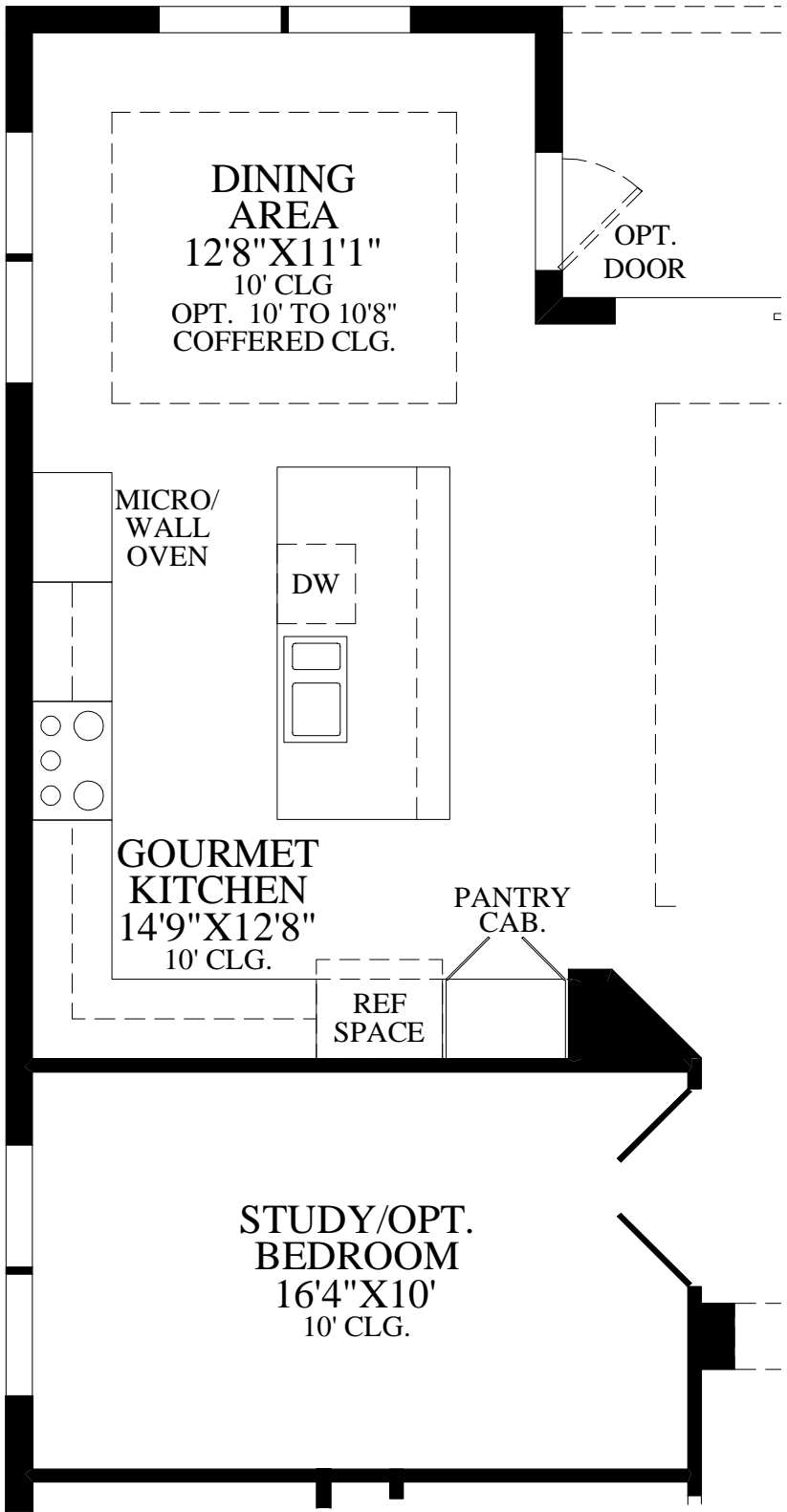
No Options Selected

These renderings are intended for illustrative purposes only. Images are copyrighted and may not be distributed, modified or reproduced without prior written permission. Information is provided "as is", without warranty, either express or implied, including, but not limited to, the implied warranties of merchantability, fitness for a particular purpose, or non-infringement. Access and use of the images and affiliated products or links are subject to all applicable laws relating to the use of web-based information, copyrighted materials and intellectual property. Site plans, floorplans, community maps, photos and/or computer-generated renderings have been provided for illustrative purposes, are conceptual in nature, and are merely an artist's rendition of actual products intended for example only. These renderings may not accurately represent the condition, size or design of the actual items being represented.

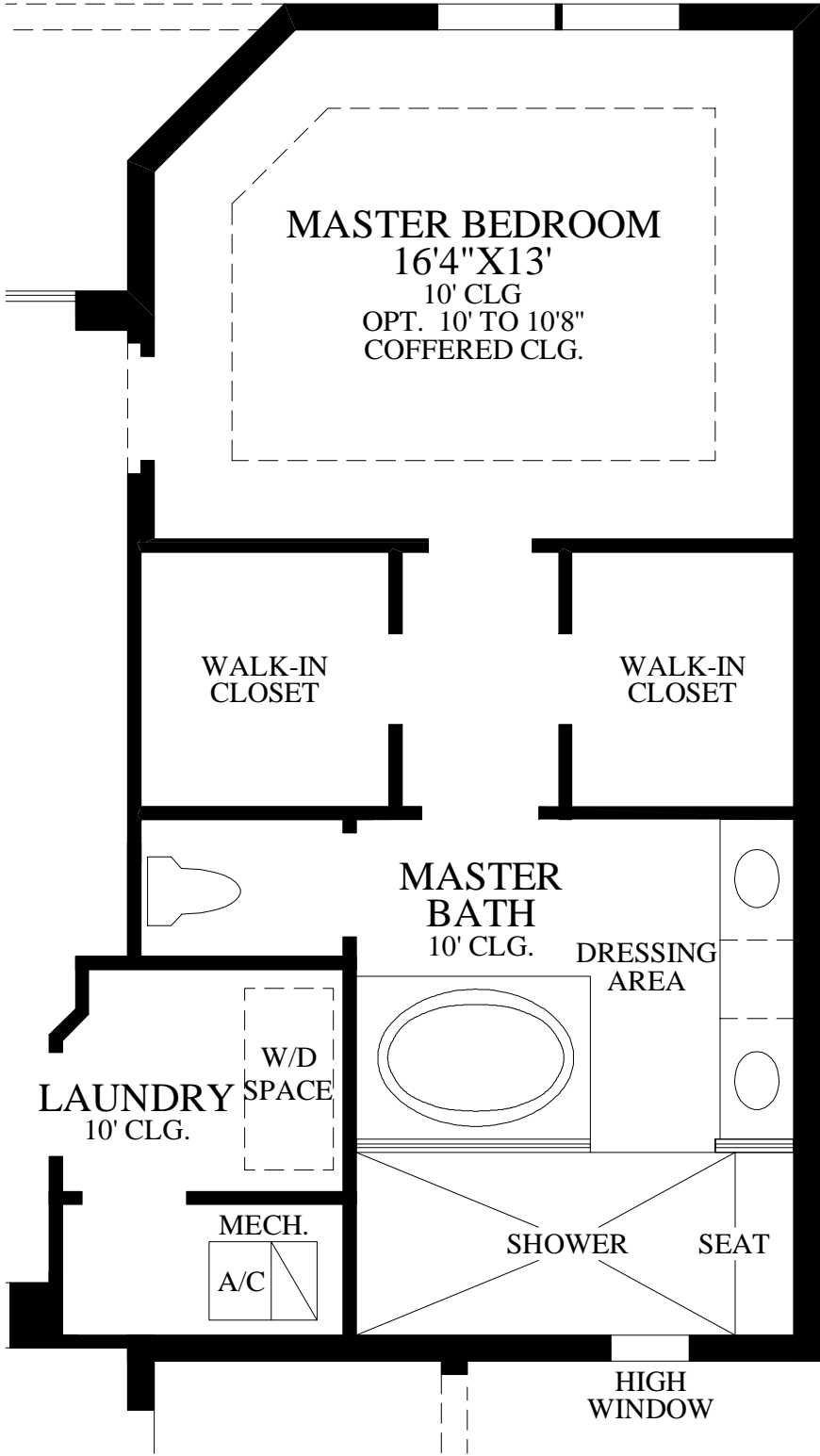


Floor Plan
COASTAL EXTERIOR DESIGN SHOWN

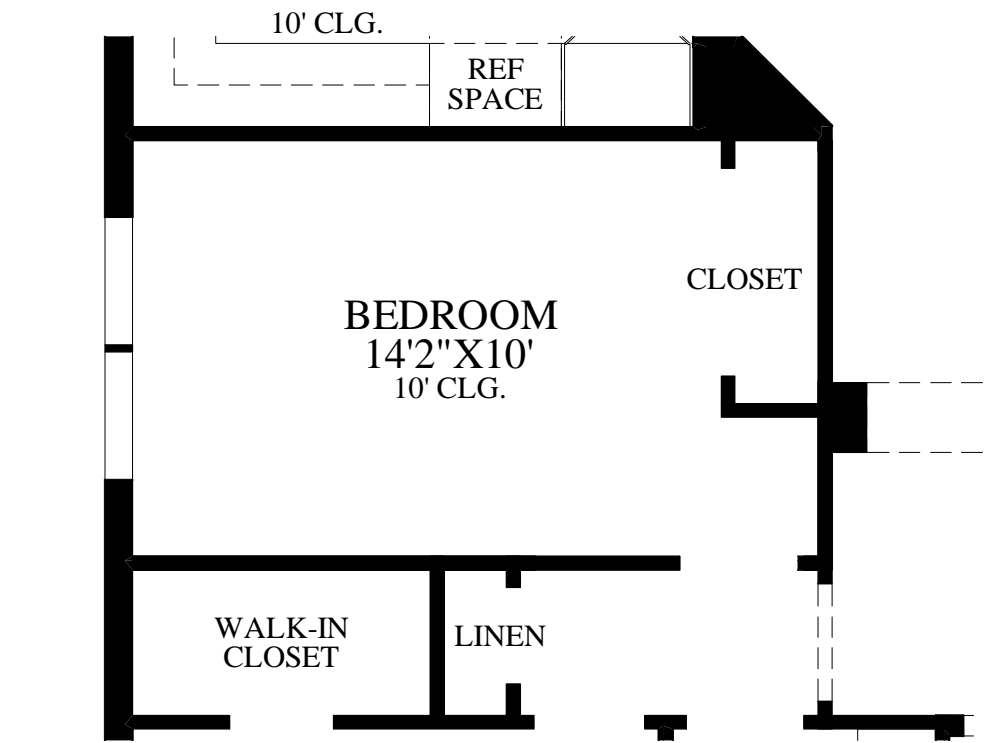
NOTE:
OPTION 047 EXPANDED
KITCHEN CANNOT BE
PURCHASED IN CONJUNCTION
WITH THIS OPTION.



SHOWN WITH
OPTIONAL ALTERNATE
KITCHEN LAYOUT



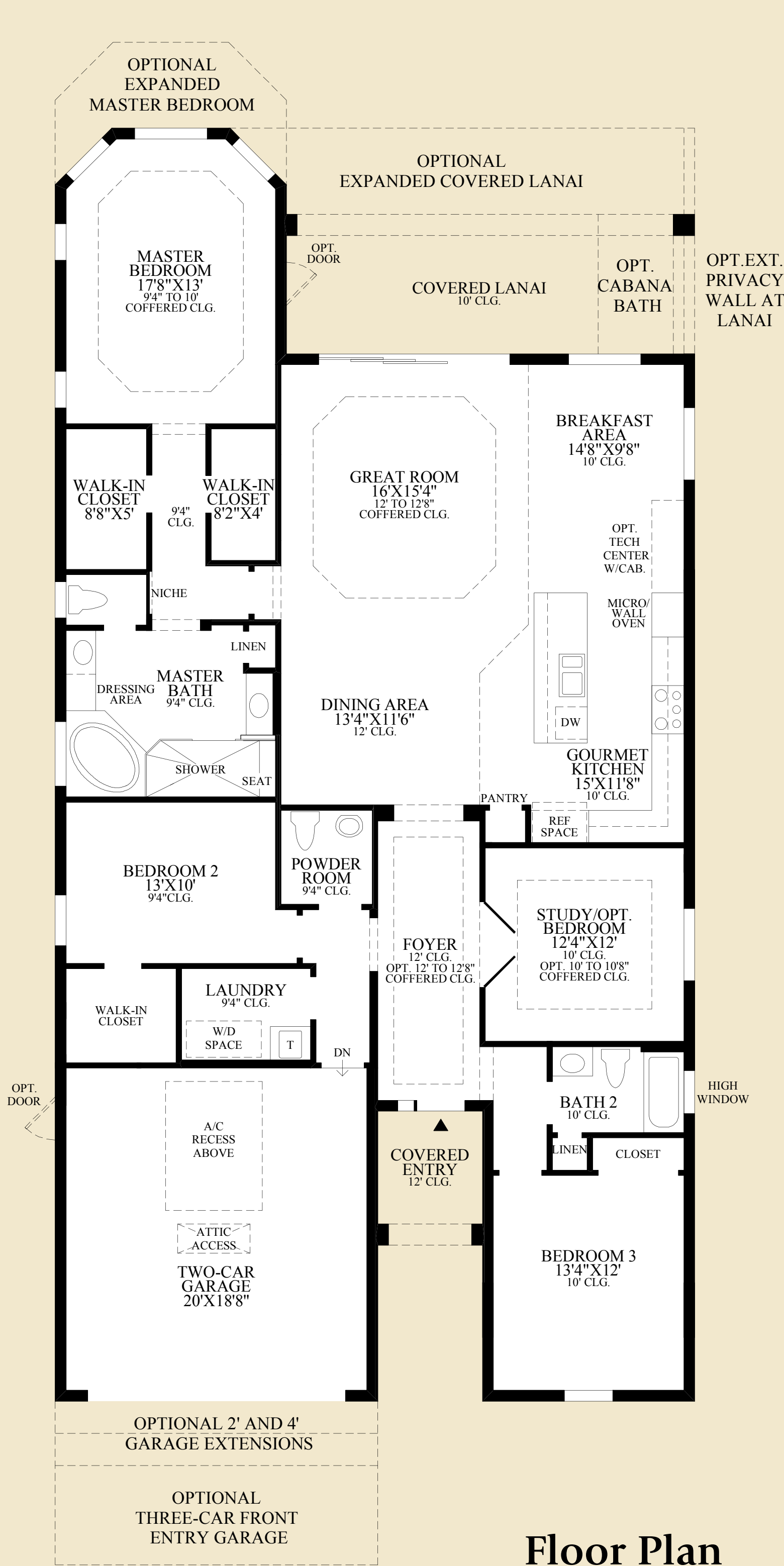
SHOWN WITH
OPTIONAL LUXURY
ALTERNATE MASTER BATH



SHOWN WITH
OPTIONAL BEDROOM IN LIEU OF STUDY/ DEN

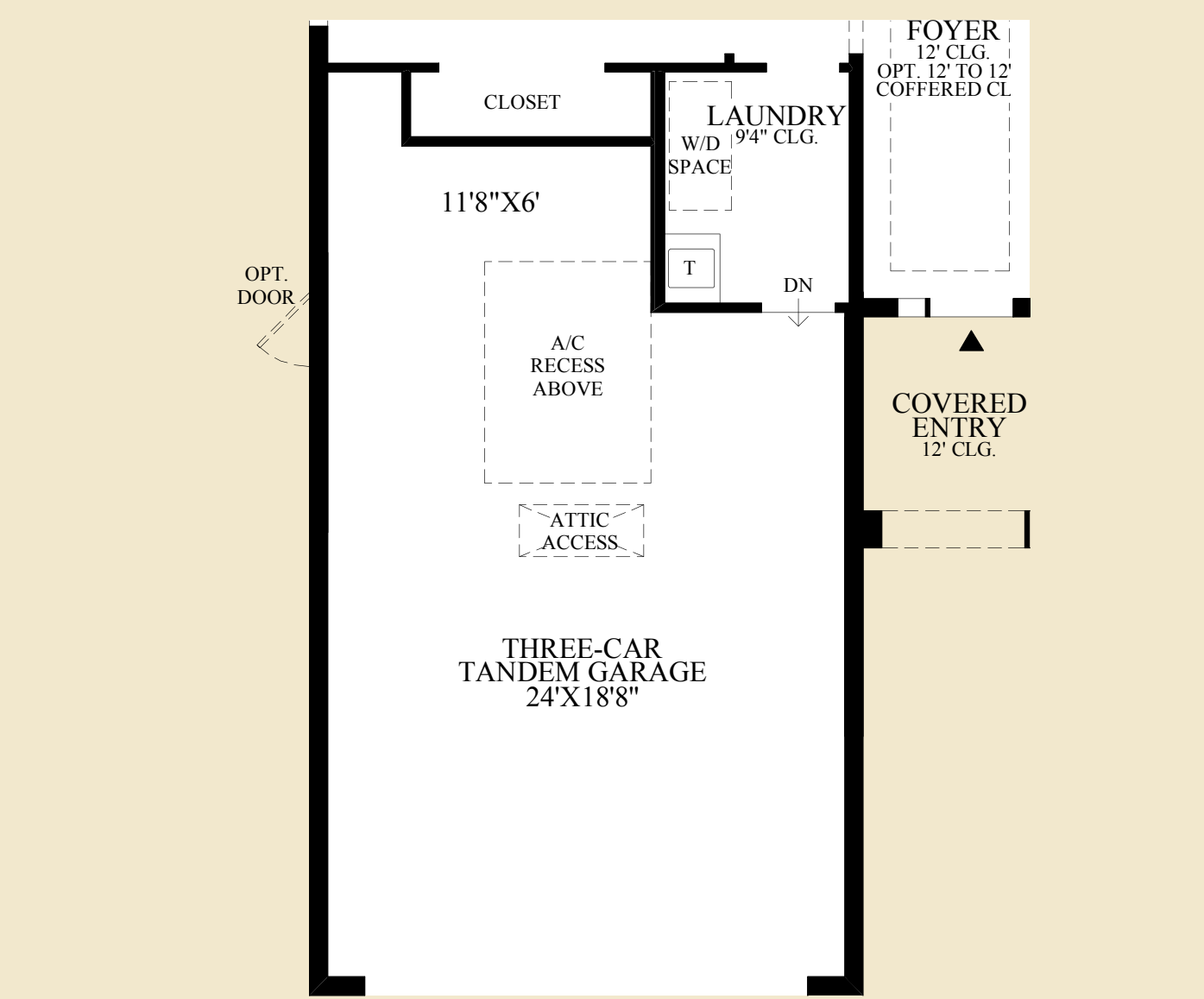
THE MARTINIQUE HIGHLIGHTS

• A covered entry leads to an elegant foyer.	Air Conditioned Living Area	1944 sq. ft.
• The living area is conducive to entertaining with it's large great room, open layout, and direct access to the covered lanai.	Covered Balcony	116 sq. ft.
• The kitchen offers an island and adjacent sunlit dining area.	Covered Entry	48 sq. ft.
• The master bedroom includes two walk-in closets and a private bathroom with a large shower, a dual-sink vanity, and a private water closet.		



Floor Plan

ISLAND COLONIAL EXTERIOR DESIGN SHOWN



SHOWN WITH OPTIONAL THREE - CAR FRONT ENTRY GARAGE



SHOWN WITH STAIRS TO OPTIONAL FINISHED LOFT WITH BEDROOM AND BATHROOM

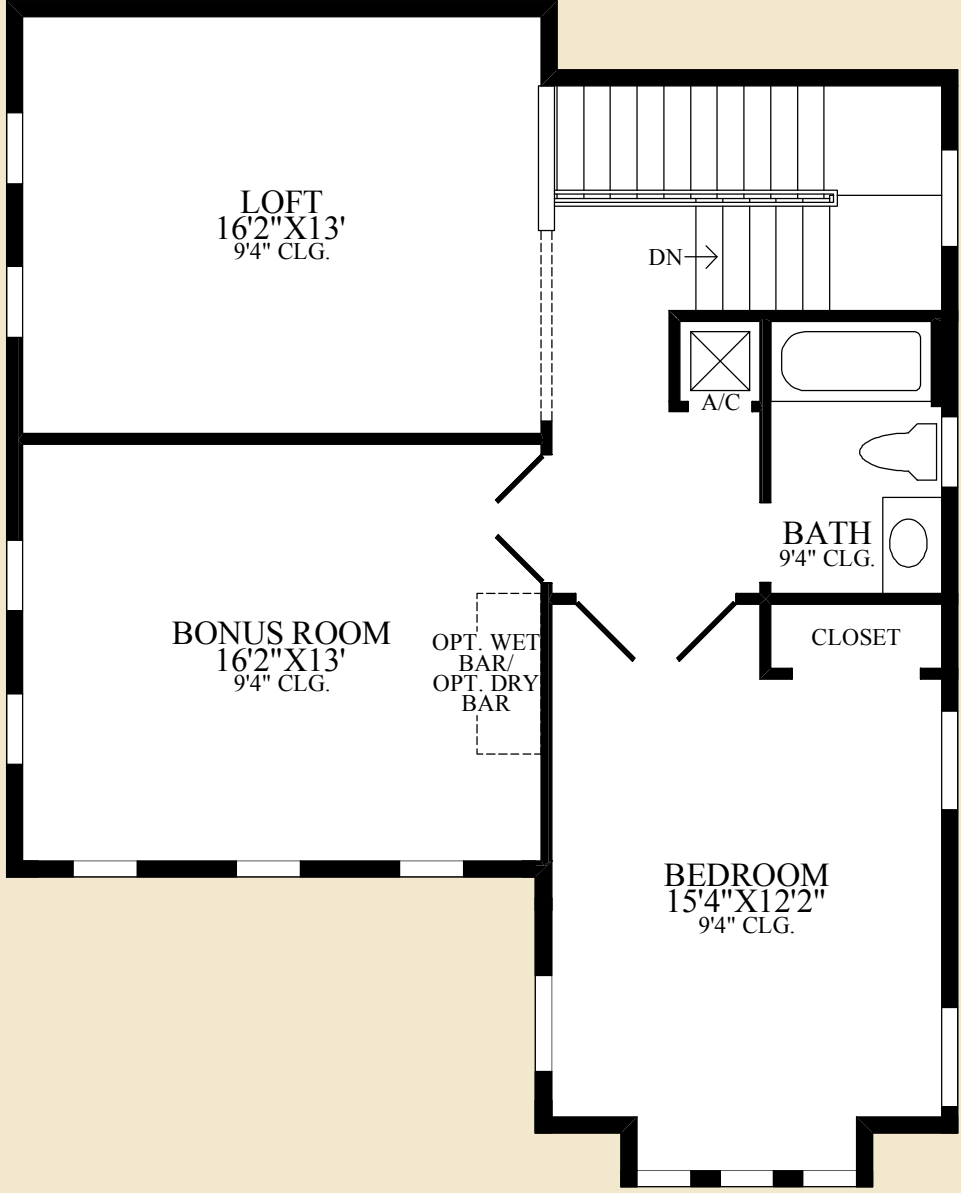
NOTE: THIS OPTION FEATURES AN ADDITIONAL 212 SQ. FT. OF AIR CONDITIONED LIVING AREA.

NOTE: OPTION 263025 FINISHED LOFT WITH BEDROOM AND BATHROOM MUST BE PURCHASED IN CONJUNCTION WITH THIS OPTION.

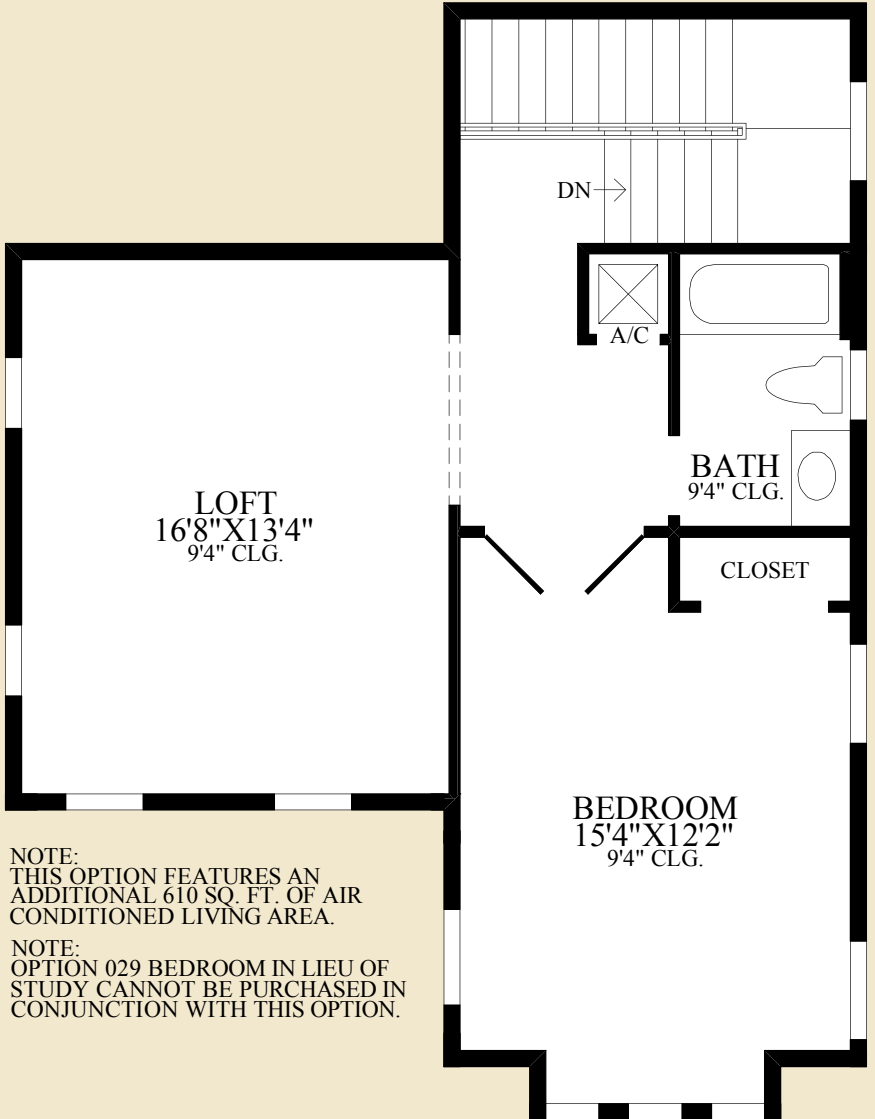
NOTE: OPTION 028 FIFTH BEDROOM, 032 ADDITIONAL BEDROOM WITH BATH AND 263041 EXTENDED LOFT CANNOT BE PURCHASED IN CONJUNCTION WITH THIS OPTION.

NOTE: OPTION 029 BEDROOM IN LIEU OF STUDY CANNOT BE PURCHASED IN CONJUNCTION WITH THIS OPTION.

NOTE: THIS OPTION FEATURES AN ADDITIONAL 610 SQ. FT. OF AIR CONDITIONED LIVING AREA.



SHOWN WITH OPTIONAL BONUS ROOM



SHOWN WITH OPTIONAL FINISHED LOFT WITH BEDROOM AND BATHROOM

THE MASSIANO HIGHLIGHTS

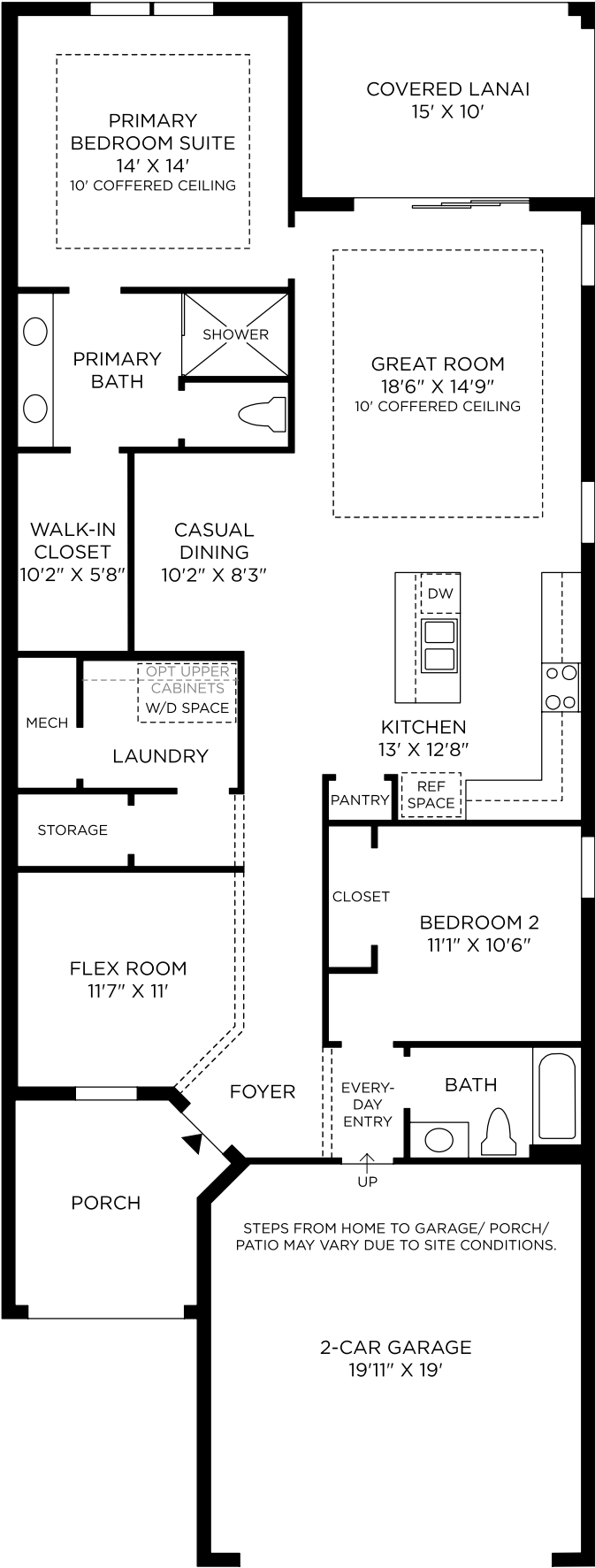
- This home features a covered entry that leads to the foyer and study with double-door entry.
- The living space of this home is conducive for entertaining with its open floor plan. The living area includes a formal dining room, gourmet kitchen with breakfast bar, sunlit breakfast area, expansive great room with coffered ceiling, and access to the covered lanai.
- The master bedroom is highlighted by an elegant coffered ceiling, dual walk-in closets and a private bath with dual vanities, corner tub, separate shower, and private water closet.

Air Conditioned Living Area	2229 sq. ft.
Covered Lanai	220 sq. ft.
Covered Entry	54 sq. ft.



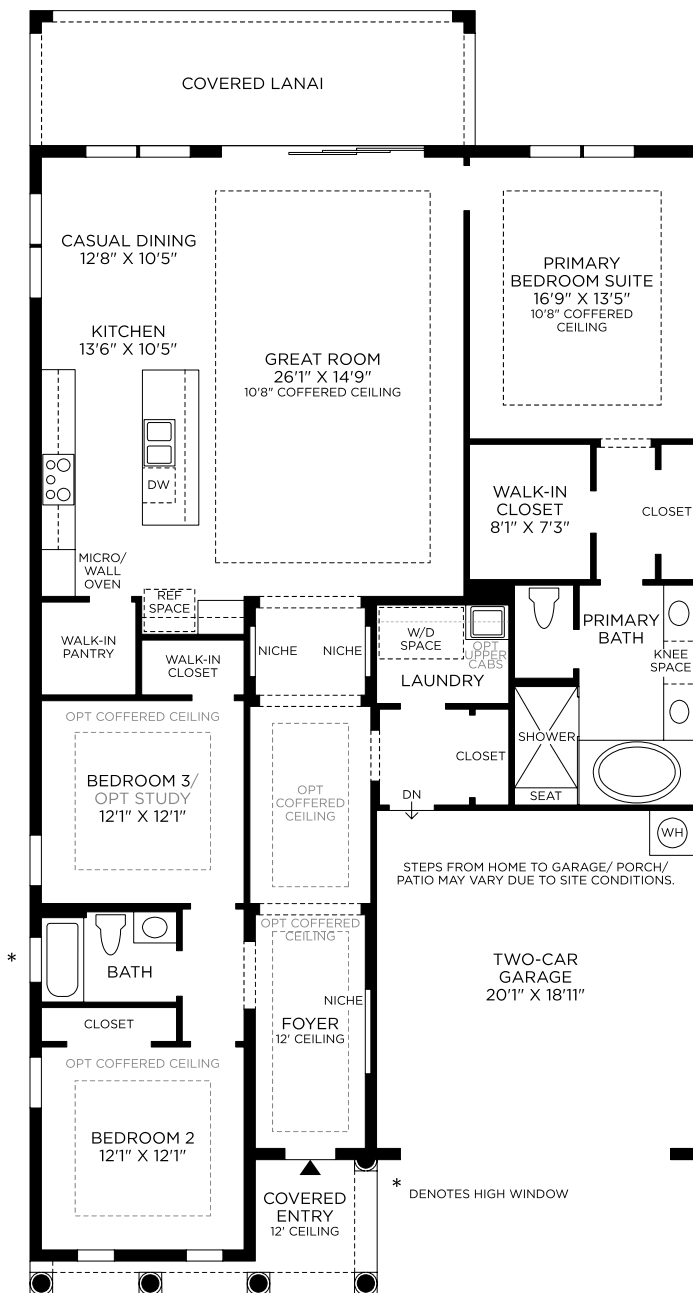
Gourmet Kitchen With Optional Tech Center With Cabinetry

Rosehall
First Floor



No Options Selected

These renderings are intended for illustrative purposes only. Images are copyrighted and may not be distributed, modified or reproduced without prior written permission. Information is provided "as is", without warranty, either express or implied, including, but not limited to, the implied warranties of merchantability, fitness for a particular purpose, or non-infringement. Access and use of the images and affiliated products or links are subject to all applicable laws relating to the use of web-based information, copyrighted materials and intellectual property. Site plans, floorplans, community maps, photos and/or computer-generated renderings have been provided for illustrative purposes, are conceptual in nature, and are merely an artist's rendition of actual products intended for example only. These renderings may not accurately represent the condition, size or design of the actual items being represented.



Sabel

Second Floor

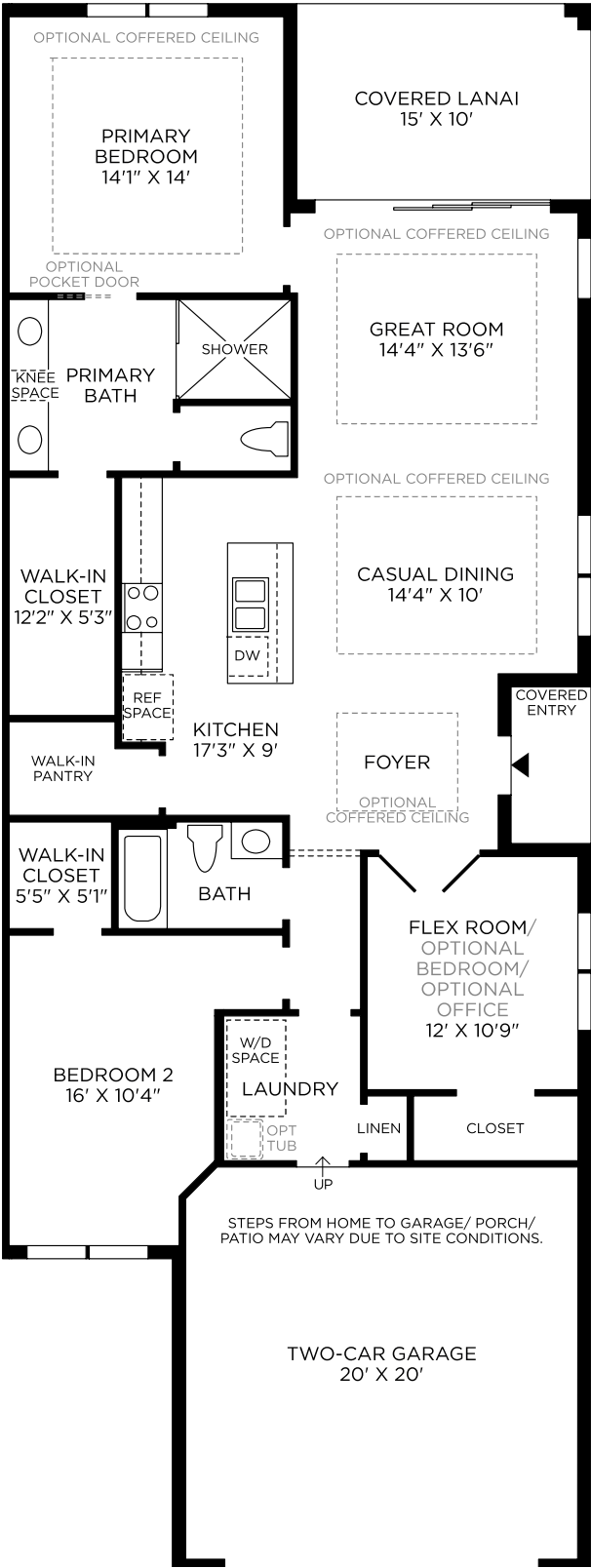
NO OPTIONS HAVE BEEN SELECTED ON THE
SECOND FLOOR. BY SELECTING AN OPTION
FOR THE SECOND FLOOR, THIS WILL ACTIVATE
STAIRS TO APPEAR ON THE FIRST FLOOR.

No Options Selected

These renderings are intended for illustrative purposes only. Images are copyrighted and may not be distributed, modified or reproduced without prior written permission. Information is provided "as is", without warranty, either express or implied, including, but not limited to, the implied warranties of merchantability, fitness for a particular purpose, or non-infringement. Access and use of the images and affiliated products or links are subject to all applicable laws relating to the use of web-based information, copyrighted materials and intellectual property. Site plans, floorplans, community maps, photos and/or computer-generated renderings have been provided for illustrative purposes, are conceptual in nature, and are merely an artist's rendition of actual products intended for example only. These renderings may not accurately represent the condition, size or design of the actual items being represented.

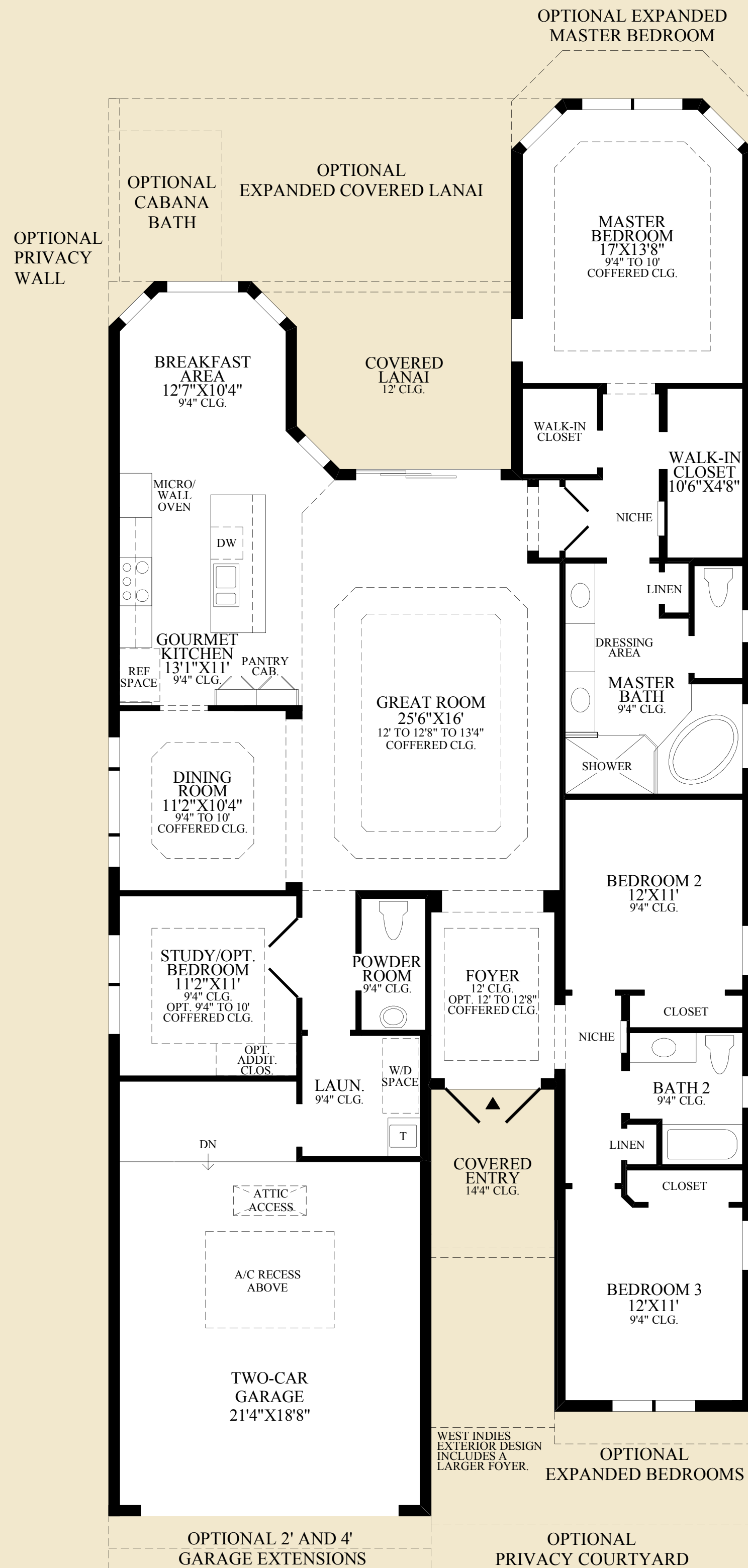
Sandhill

First Floor



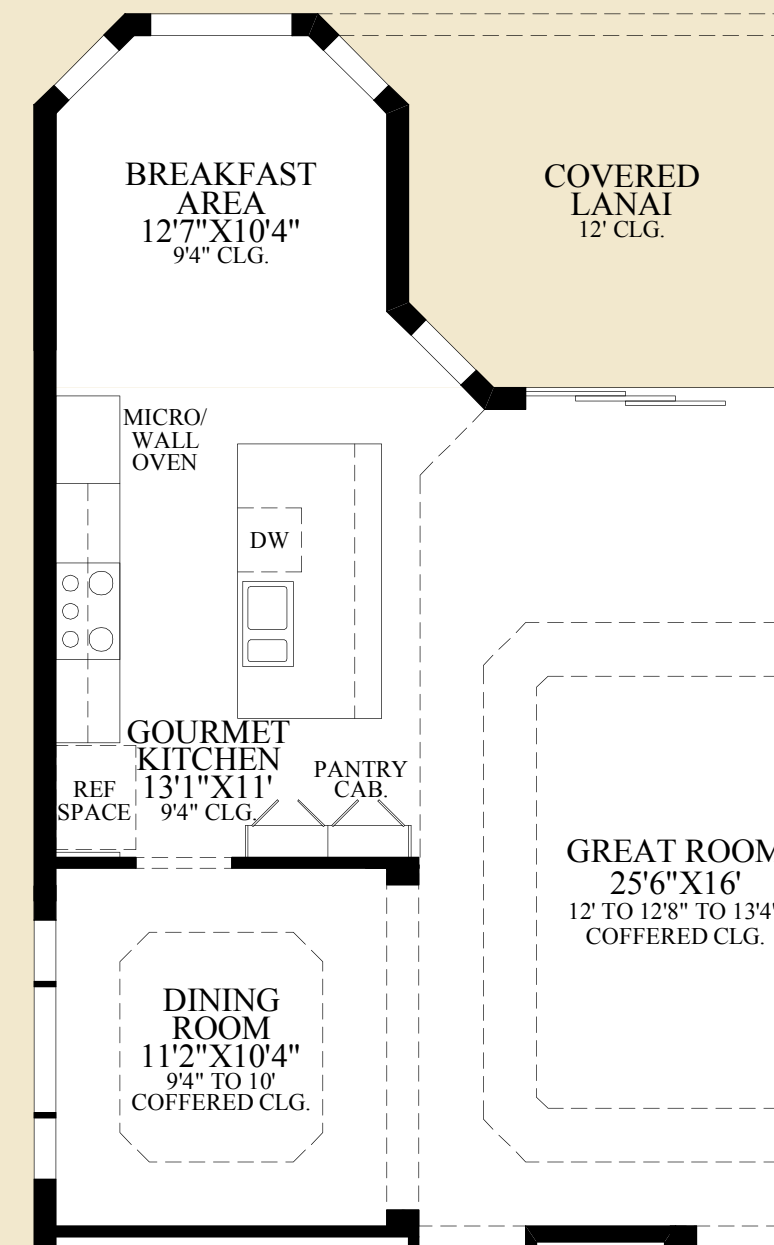
No Options Selected

These renderings are intended for illustrative purposes only. Images are copyrighted and may not be distributed, modified or reproduced without prior written permission. Information is provided "as is", without warranty, either express or implied, including, but not limited to, the implied warranties of merchantability, fitness for a particular purpose, or non-infringement. Access and use of the images and affiliated products or links are subject to all applicable laws relating to the use of web-based information, copyrighted materials and intellectual property. Site plans, floorplans, community maps, photos and/or computer-generated renderings have been provided for illustrative purposes, are conceptual in nature, and are merely an artist's rendition of actual products intended for example only. These renderings may not accurately represent the condition, size or design of the actual items being represented.

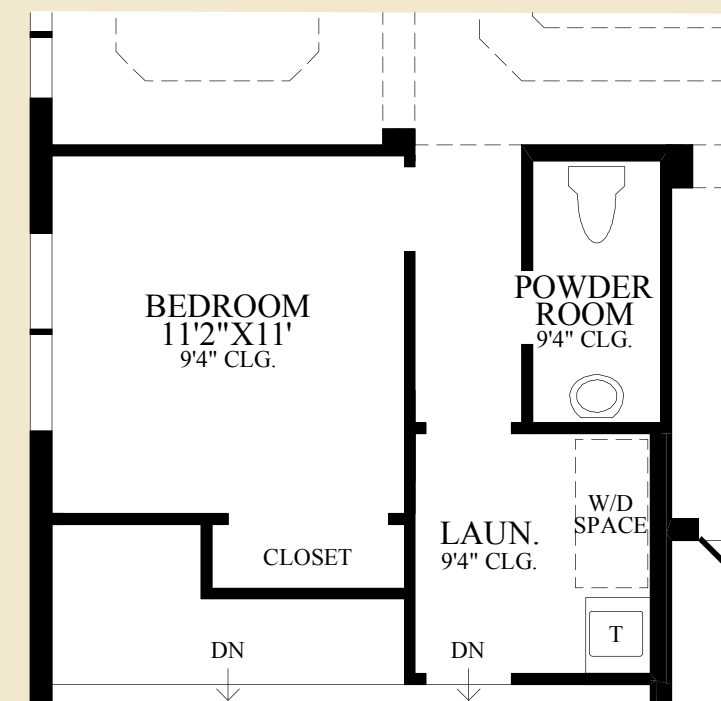


Floor Plan

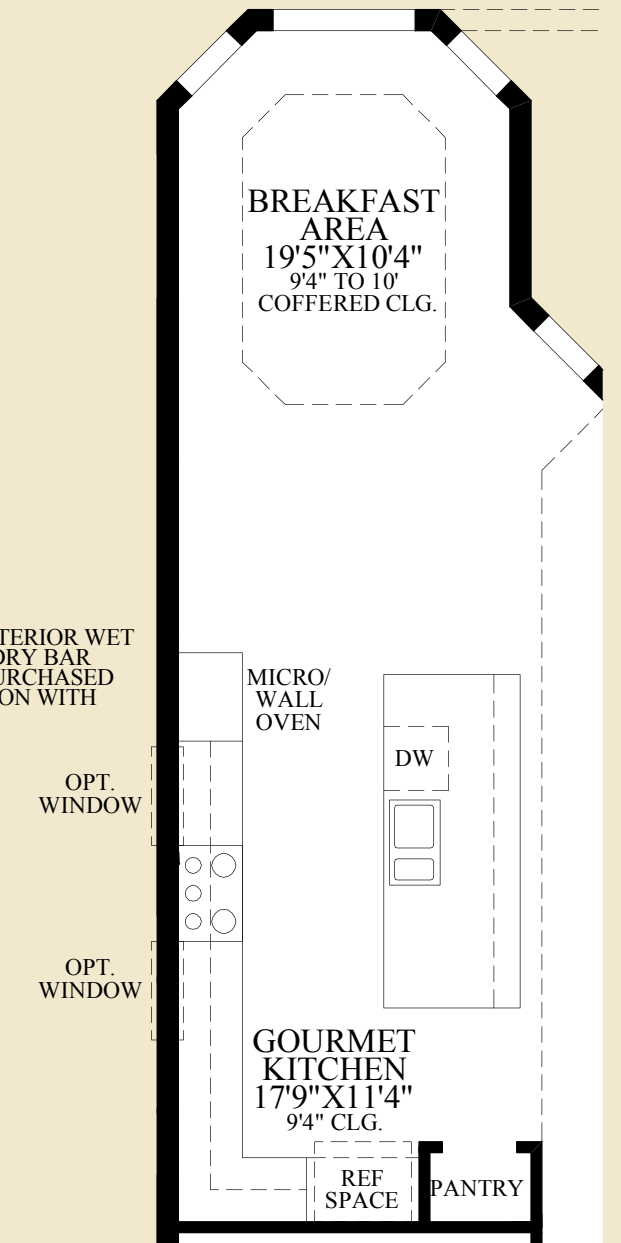
CARIBBEAN EXTERIOR DESIGN SHOWN



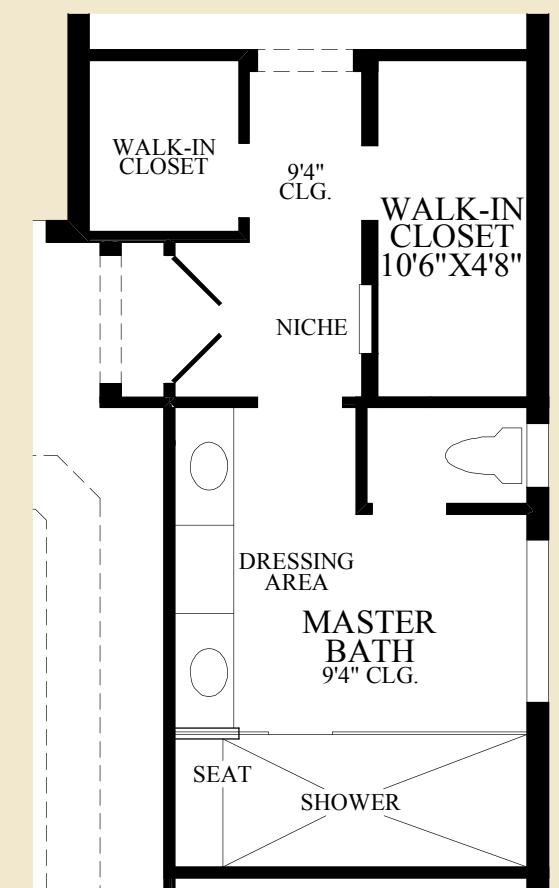
SHOWN WITH OPTIONAL
ALTERNATE KITCHEN



SHOWN WITH OPTIONAL
BEDROOM IN LIEU OF STUDY



SHOWN WITH OPTIONAL
EXPANDED KITCHEN



SHOWN WITH OPTIONAL
ALTERNATE MASTER BATH

THE SERINO HIGHLIGHTS

- The formal foyer features elegant columns which mimic the entry and leads to the expansive great room with coffered ceiling and direct access to the covered lanai.
- The kitchen with pantry is centrally located between the sunlit breakfast area and the dining room with columned entry and coffered ceiling.
- The master bedroom is complete with a coffered ceiling, two walk-in closets, and private bathroom with dual-sink vanity, private water closet, corner tub, and separate shower.
- This home also features additional bedrooms and bathroom, a privately-located study, and separate laundry room.

Air Conditioned Living Area	2285 sq. ft.
Covered Lanai	156 sq. ft.
Covered Entry	79 sq. ft.



Master Bedroom with Optional Open-Beam Ceiling

DRAFT



NOTE:
OPTION 047175 FREE-STANDING MASTER
SOAKING TUB AND 263058 ALTERNATE
MASTER BATH CANNOT BE PURCHASED
IN CONJUNCTION WITH THIS OPTION.



NOTE:
OPTION 263133 ADDITIONAL
CLOSET WITH BI-PASS DOORS
CANNOT BE PURCHASED IN
CONJUNCTION WITH THIS
OPTION.



DRAFT

- The two-story foyer of this home offers direct access to the study with double doors as well as stunning views of the gracefully turned stairs.
- Ideal space for entertaining and family gatherings includes an expansive two-story great room with direct access to the covered lanai, a kitchen with a large center island, and an adjacent dining room.
- The master bedroom includes two walk-in closets and a private bath with dual vanities, a corner tub, a separate shower with seat, and a private water closet.

A large, bright Great Room with a vaulted ceiling, multiple windows, and a fireplace. The room features a light-colored sofa, a coffee table, and a large fireplace with a glass-enclosed TV. A balcony is visible on the upper level.

The Stillwater at Azure at Hacienda Lakes - Villa Collection

