

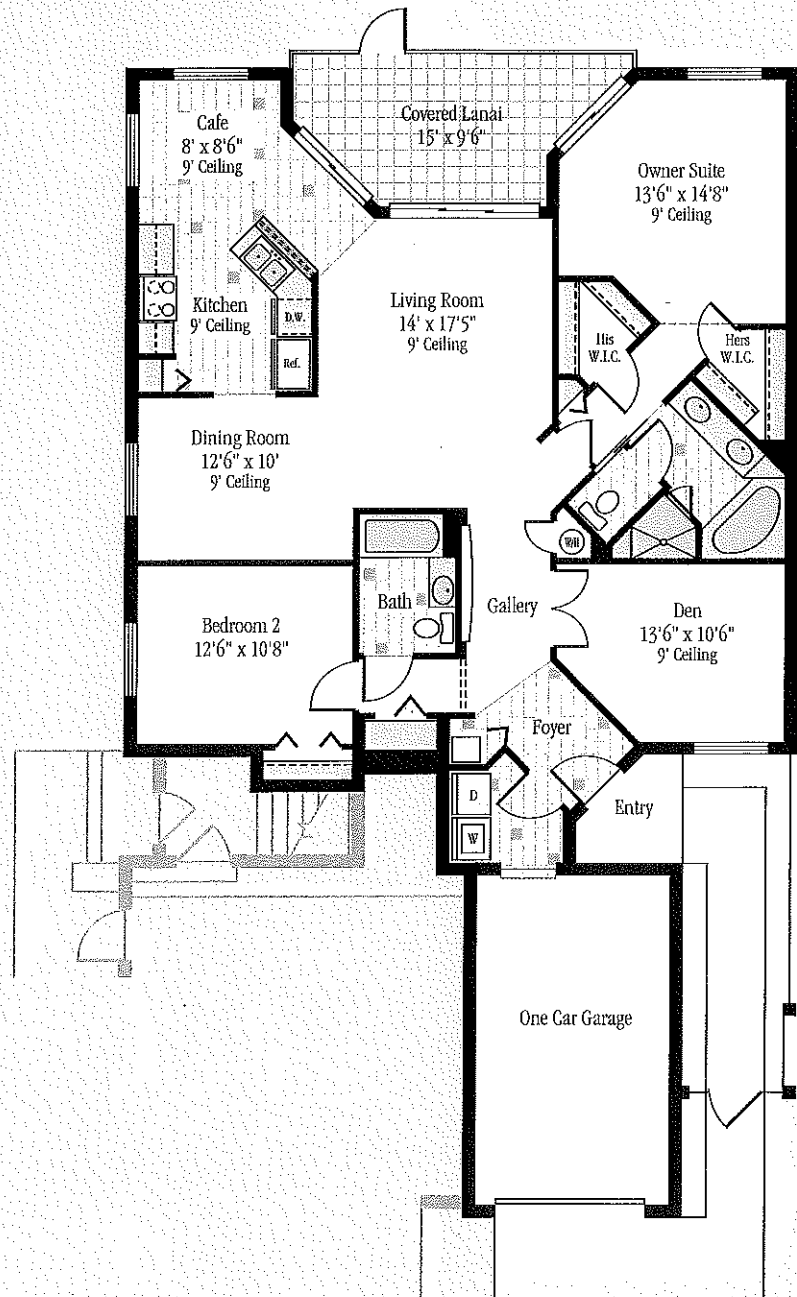
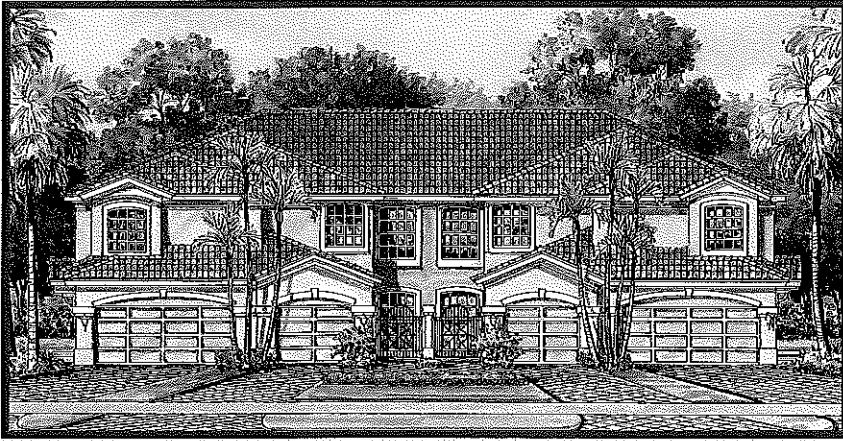
# Floor Plans

These floor plans have been assembled as a resource for you. They may not be inclusive of every home in the community.

Please note that over time, owners may make modifications to spaces that may not be captured in these original floor plans.

Renderings are not a guarantee of space measurement. Interested parties should verify through their own secured services.

# Coach Homes



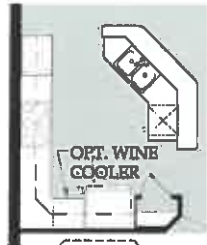
## THE SANDPIPER

First Floor Living Area	1,638 Sq. Ft.
Lanai	149 Sq. Ft.
Entry	37 Sq. Ft.
Garage	266 Sq. Ft.
<b>Total Area</b>	<b>2,090 Sq. Ft</b>

Two Bedrooms, Two Baths, Den and One-Car Garage.

# Cheshire

- Carriage Home
- Living Area: 1,654 Sq. Ft.
- Total Area: 2,357 Sq. Ft.
- 2 Bedrooms
- 2 Baths
- Den/Optional 3rd Bedroom
- 2 Car Garage



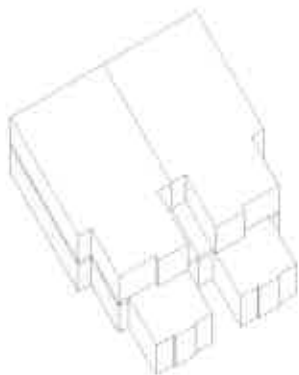
Opt. Kitchen Extended Open Bar Top



Opt. Kitchen Upgrade



Opt. Bedroom 3 ILO Den



Building Key



Opt. Shower @Bath 2

ORAL REPRESENTATIONS CANNOT BE RELIED UPON AS CORRECTLY STATING REPRESENTATIONS OF THE DEVELOPER. FOR CORRECT REPRESENTATIONS, MAKE REFERENCE TO THIS BROCHURE AND TO THE DOCUMENTS REQUIRED BY SECTION 718.503, FLORIDA STATUTES, TO BE FURNISHED BY A DEVELOPER TO A BUYER OR LESSEE. Artist's renderings are conceptual only and are not intended to be an exact representation or show specific detailing. Square footage, room dimensions and spatial arrangements on this plan are approximate and may vary in final construction and may vary by elevation. See a sales representative for details. ©2015 Pulte Home Corporation. CBC057850. TWE 4/14/15





BATH

LANAI  
20' x 20'

OPTIONAL  
OUTDOOR  
KITCHEN

MASTER  
SUITE  
12' x 12'

GREAT ROOM  
22' x 14'

WALK-IN  
CLOSET

DINING  
12' x 12'

KITCHEN  
10' x 10'

MASTER  
BATH

BATH

DEN  
11' x 11'

BEDROOM 2  
12' x 12'

FOYER

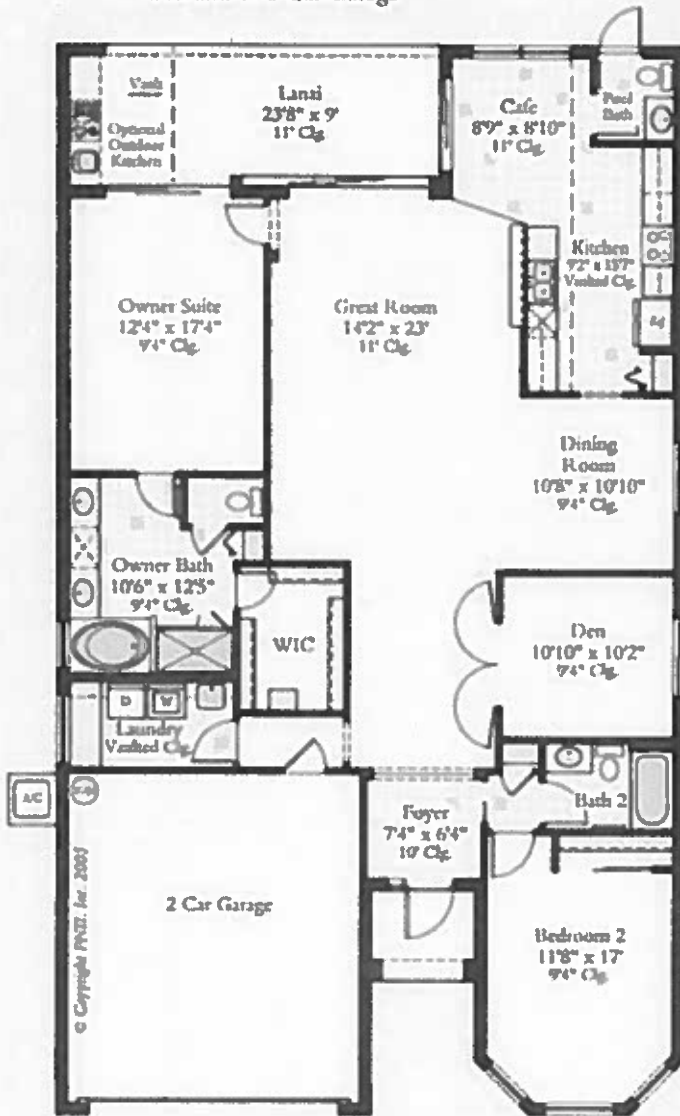
ENTRY

GARAGE  
30' x 21'

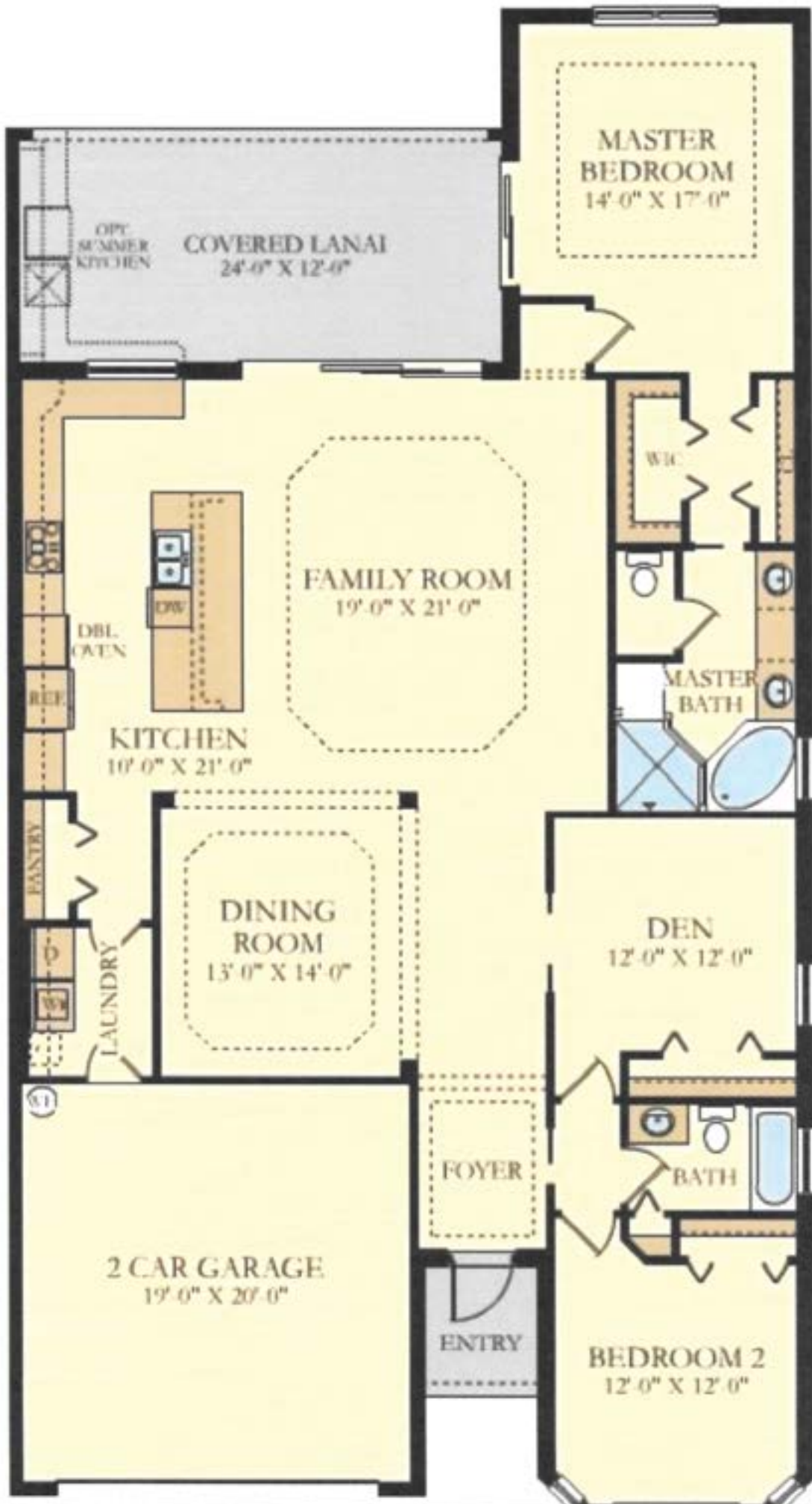
## THE MAPLE

Living Area	1,964 Sq. Ft.
Lanai	219 Sq. Ft.
Entry	49 Sq. Ft.
Garage	428 Sq. Ft.
<b>Total Area</b>	<b>2,660 Sq. Ft.</b>

Two Bedrooms, Two and One-Half Baths,  
Den and Two-Car Garage







OPT. SUMMER KITCHEN  
COVERED LANAI  
24'-0" X 12'-0"

MASTER BEDROOM  
14'-0" X 17'-0"

DBL. OVEN  
REF.  
KITCHEN  
10'-0" X 21'-0"

FAMILY ROOM  
19'-0" X 21'-0"

W.I.C.  
MASTER BATH

PANTRY  
LAUNDRY  
DINING ROOM  
13'-0" X 14'-0"

DEN  
12'-0" X 12'-0"

2 CAR GARAGE  
19'-0" X 20'-0"

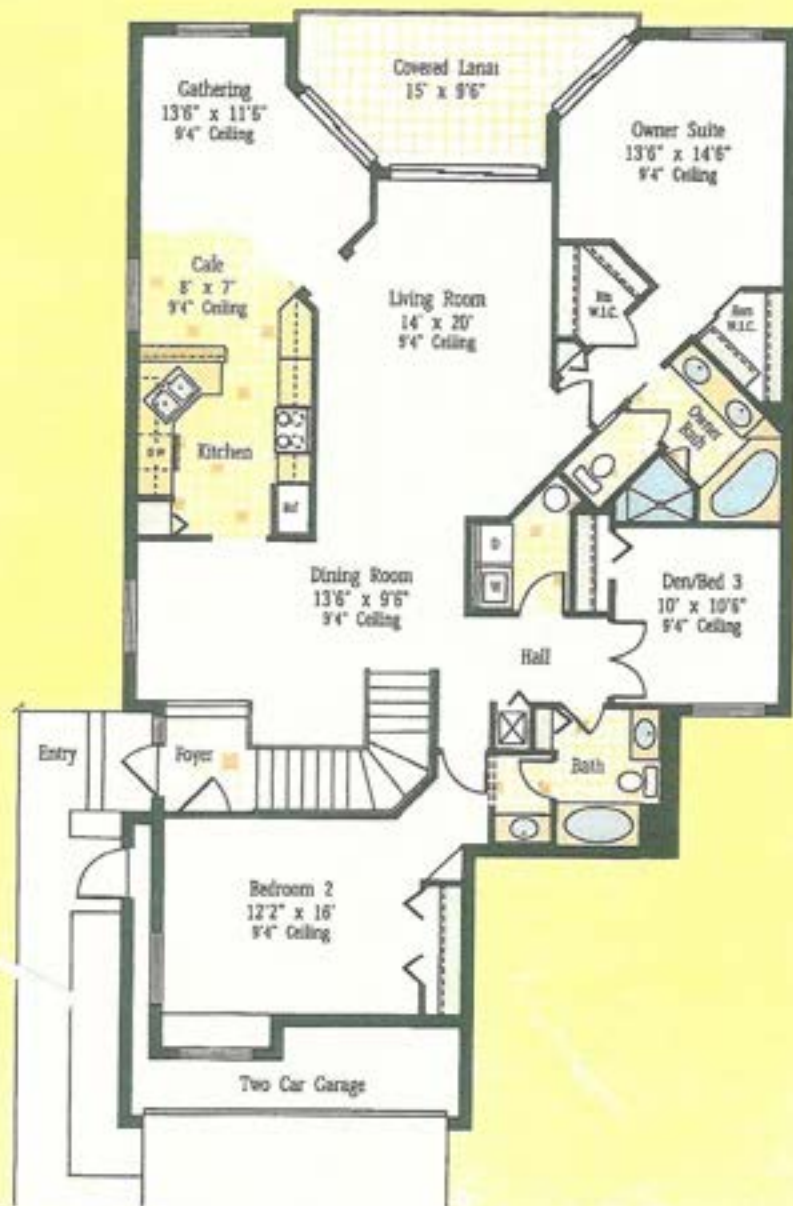
FOYER  
ENTRY

BATH  
BEDROOM 2  
12'-0" X 12'-0"

## THE TAMARIND

Second Floor Living Area	2,045 Sq. Ft.
Lanai	149 Sq. Ft.
Entry	25 Sq. Ft.
Garage	452 Sq. Ft.
<b>Total Area</b>	<b>2,671 Sq. Ft.</b>

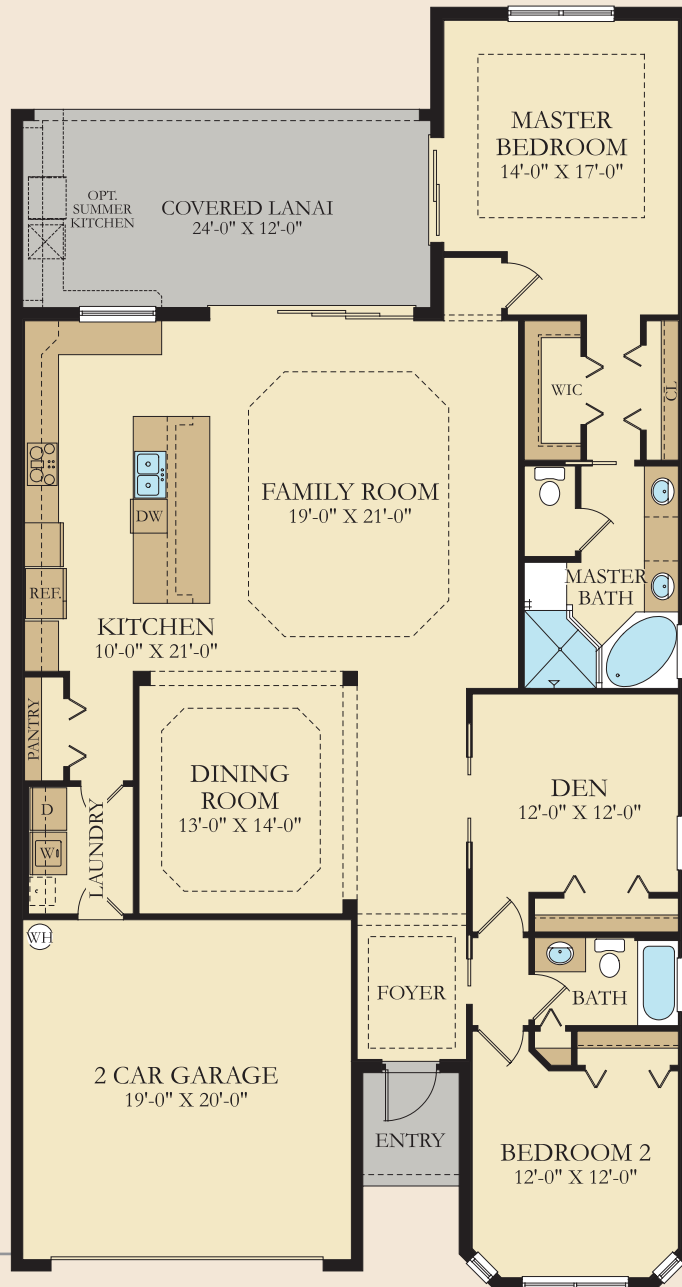
Three Bedrooms,  
Two Baths and Two-Car Garage



# ANGELINA



2 Bedrooms | 2 Baths | Den | 2-Car Garage



2,061 Sq. Ft. Living A/C

38 Sq. Ft. Entry

289 Sq. Ft. Lanai

421 Sq. Ft. Garage

**2,809 Sq. Ft. Total**

TWINEAGLES®

LENNAR®



EVERYTHING'S INCLUDED™

Elevations of a home may vary and we reserve the right to substitute and/or modify design and materials, in our sole opinion and without notice. Please see your actual home purchase agreement for additional information, disclosures and disclaimers related to the home and its features. Please see your New Home Consultant and home purchase agreement for actual features designated as an Everything's Included feature, additional information, disclosures, and disclaimers relating to your home and its features. Plans are artist's renderings and may contain options which are not standard on all models. Lennar reserves the right to make changes to plans and elevations without prior notice. Stated dimensions and square footage are approximate and should not be used as representation of the home's precise or actual size. Any statement, verbal or written, regarding "under air" or "finished area" or any other description or modifier of the square footage size of any home is a shorthand description of the manner in which the square footage was estimated and should not be construed to indicate certainty. Garage sizes may vary from home to home and may not accommodate all vehicles. Visit Lennar.com or see a Lennar New Home Consultant for further details and important legal disclaimers. This is not an offer in states where prior registration is required. Void where prohibited by law. Copyright © 2018 Lennar Corporation, Lennar, the Lennar logo, WCI, the WCI logo, Everything's Included and the Everything's Included logo are U.S. registered service marks or service marks of Lennar Corporation and/or its subsidiaries. LENNAR HOMES LLC CBC038894 and CGC1523282. LENNAR REALTY INC (CQ1013633) 3/18.

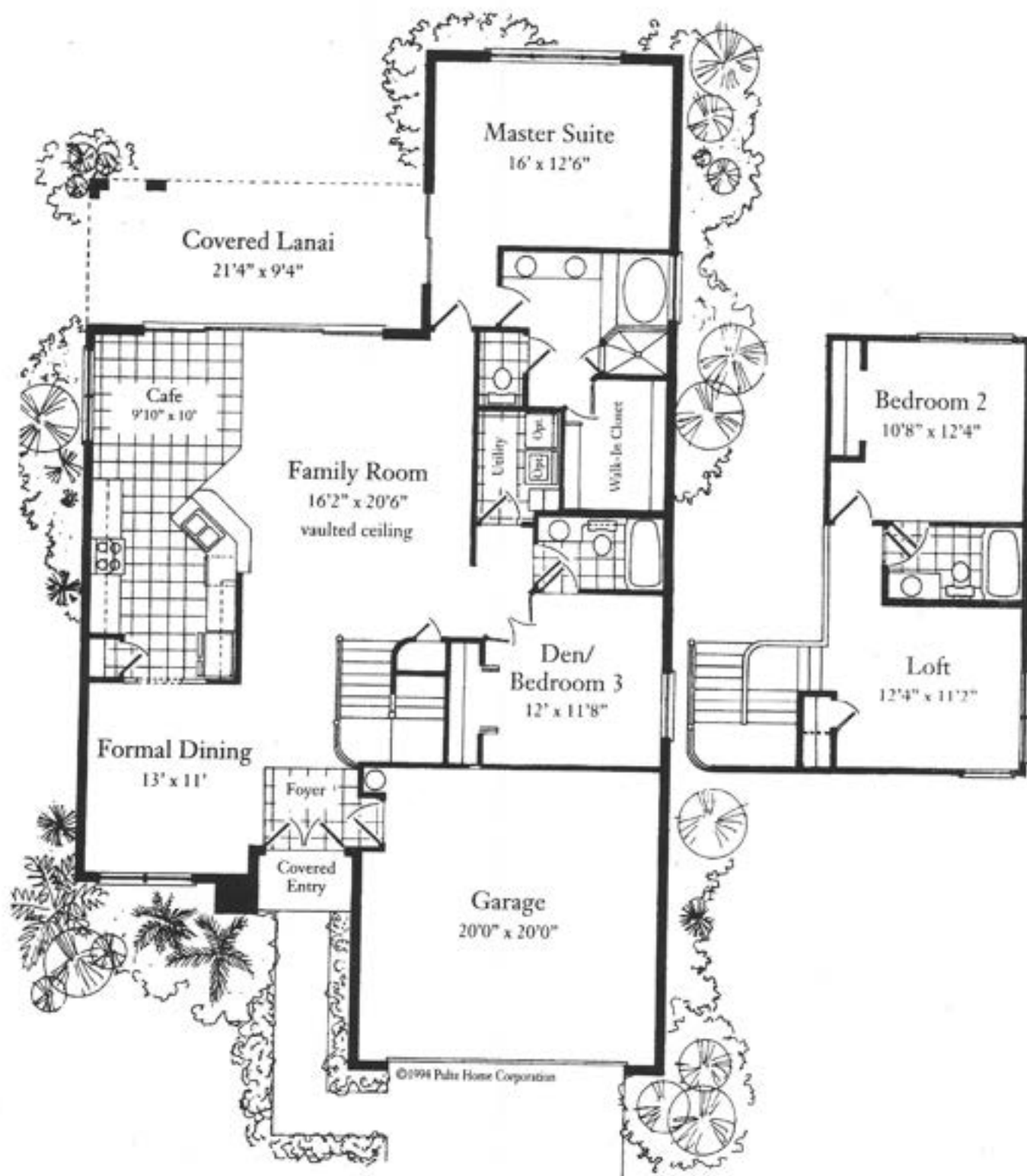




# The Spinnaker

3 BEDROOM/LOFT - 3 BATH

2089



©1994 Palm Home Corporation

# THE SPINNAKER

Living Area	2,098 Sq. Ft.
Lanai	227 Sq. Ft.
Entry	25 Sq. Ft.
Garage	429 Sq. Ft.
<b>Total Area</b>	<b>2,779 Sq. Ft.</b>

Two Bedroom, Three Baths, Den,  
Loft and Two-Car Garage



## THE BELMONT

Living Area	2,153 Sq. Ft.
Lanai	428 Sq. Ft.
Entry	83 Sq. Ft.
Garage	487 Sq. Ft.
<b>Total Area</b>	<b>3,151 Sq. Ft.</b>



Two Bedrooms, plus Den, Two Baths,  
Great Room and Two-Car Garage





# The Isabella

2,246 SQ. FT.

See the LENNAR Sales Representative for a list of optional features shown on this plan.



Living	2,246 S.F.
Lanai	227 S.F.
Garage	439 S.F.
Entry	83 S.F.
<b>Total</b>	<b>2,995 S.F.</b>

## TWINEAGLES

11330 TWINEAGLES BOULEVARD  
NAPLES, FLORIDA 34120  
239 • 352 • 8000  
TWINEAGLES.COM

## LENNAR

Main Office: 866-201-5183

Sketches and illustrations are artist's renderings. Details are subject to changes and field variations. All dimensions are approximate.







# The Isabella

*Available in the following neighborhood:*

**Fenhurst**



*Photos are representative of similar elevations*

## LENNAR at TwinEagles®

Lennar Corporation, founded in 1954, is headquartered in Miami, Florida and is one of the nation's leading builders of quality homes for all generations. Lennar builds affordable, move-up and retirement homes in Communities that cater to almost any lifestyle - such as urban, golf course, Active Adult or suburban Communities.

As a result, Lennar now builds homes in some of the most desirable cities and states to live in all across America, and has now become one of the most respected homebuilders in the nation.

TWINEAGLES



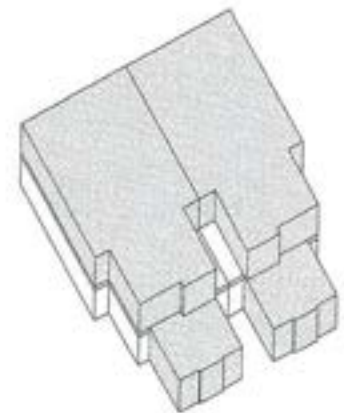
# Tourmaline

2,297 SQ. FT.

See the Pulte Homes Sales Representative for a list of optional features shown on this plan.



Bedroom  
Option @Den



Building Key



## TWINEAGLES

11330 TWINEAGLES BOULEVARD  
NAPLES, FLORIDA 34120  
239 • 352 • 8000  
TWINEAGLES.COM



Phone: 866-742-8545

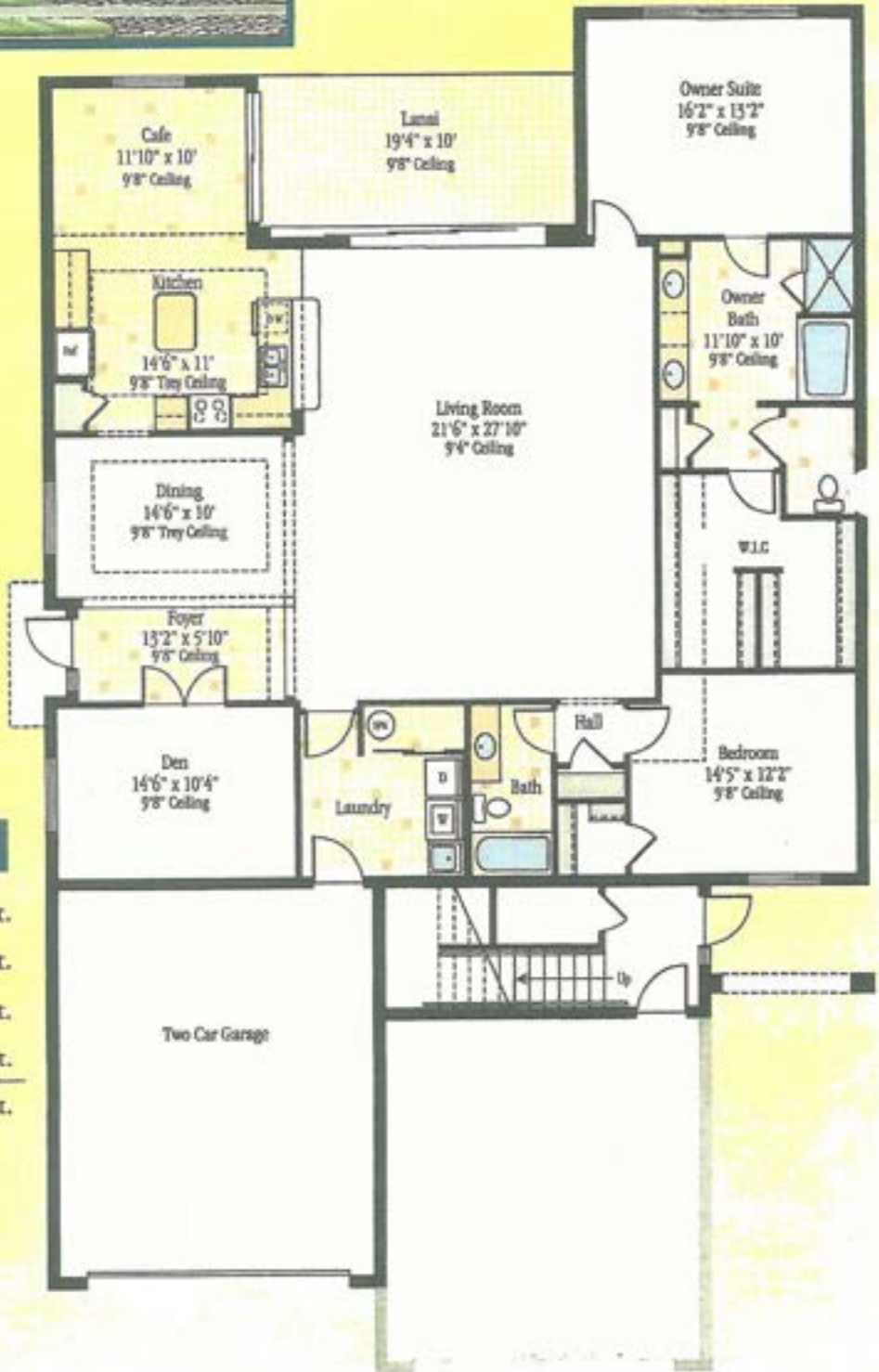
## Second Floor

## First Floor

Living	2,297 S.F.
Entry	47 S.F.
Garage	480 S.F.
Lanai	230 S.F.
<b>Total</b>	<b>3,054 S.F.</b>

Sketches and illustrations are artist's renderings. Details are subject to changes and field variations. All dimensions are approximate.





**ABACO**

First Floor Living Area	2,367 Sq. Ft.
Lanai	194 Sq. Ft.
Entry	18 Sq. Ft.
Garage	500 Sq. Ft.
<b>Total Area</b>	<b>3,079 Sq. Ft.</b>

Two Bedrooms, Two Baths, Den  
and Two-Car Garage

# THE MORNINGSTAR

Living Area	2,389 Sq. Ft.
Lanai	274 Sq. Ft.
Entry	50 Sq. Ft.
Garage	426 Sq. Ft.
<b>Total Area</b>	<b>3,139 Sq. Ft.</b>



Three Bedrooms,  
Two and One-Half Baths, Den,  
Loft and Two-Car Garage







## THE TILBURY

Living Area	2,450 Sq. Ft.
Lanai	187 Sq. Ft.
Entry	67 Sq. Ft.
Garage	486 Sq. Ft.
<b>Total Area</b>	<b>3,190 Sq. Ft.</b>



Three Bedrooms plus Den,  
Three and One-Half Baths, Great Room  
and Two-Car Garage





## THE VICTORIA

Living Area	2,562 Sq. Ft.
Lanai	289 Sq. Ft.
Entry	31 Sq. Ft.
Garage	463 Sq. Ft.
<b>Total Area</b>	<b>3,345 Sq. Ft.</b>



Three Bedrooms plus Den,  
Two and One-Half Baths, Great Room  
and Two-Car Garage



# PRESTWICK

2,642 A/C SQ. FT. w/ 3-CAR GARAGE  
 2 Bedrooms, Study, 2½ Baths, 3-Car Garage



Total - A/C Sq. Ft.	2,642
2-Car Garage	448
1-Car Garage	263
Covered Entry	45
Covered Screened Lanai	345
Total Sq. Ft.	3,743

Front elevation window configurations change per elevation chosen



ELEVATION A







## BIMINI

Second Floor Living Area	2,646 Sq. Ft.
Lanai	327 Sq. Ft.
Entry	65 Sq. Ft.
Garage	446 Sq. Ft.
<b>Total Area</b>	<b>3,485 Sq. Ft.</b>

Two Bedrooms, Two Baths, Den  
and Two-Car Garage.

# INVERNESS II

2,733 A/C SQ. FT. 🏠 3-CAR GARAGE

3 Bedrooms, Study, 3 Baths, 3-Car Garage



Front elevation window configurations change per elevation chosen



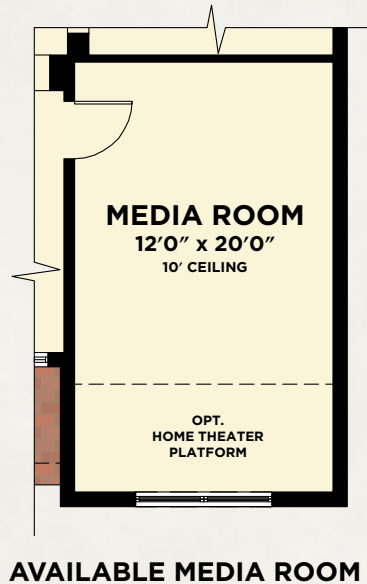
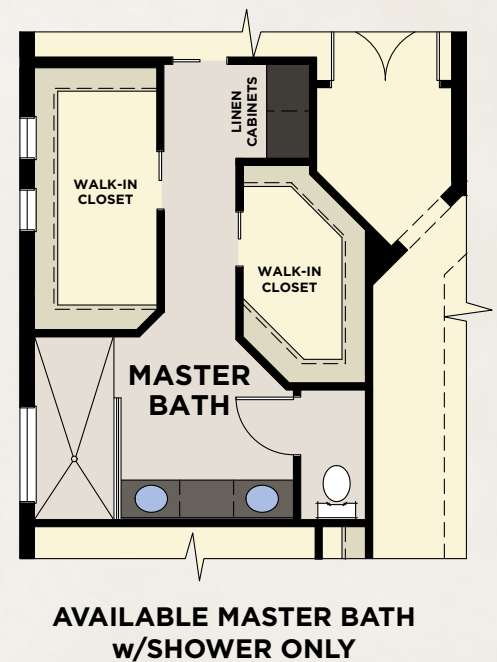
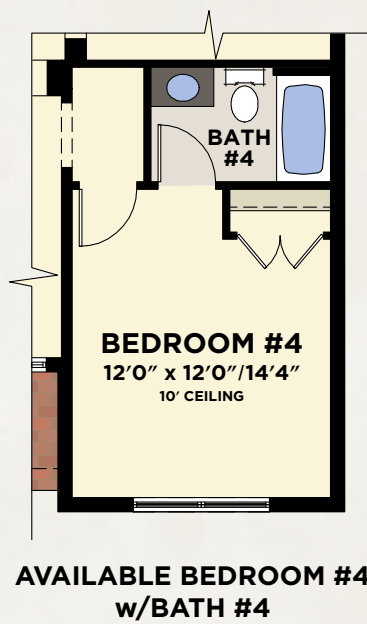
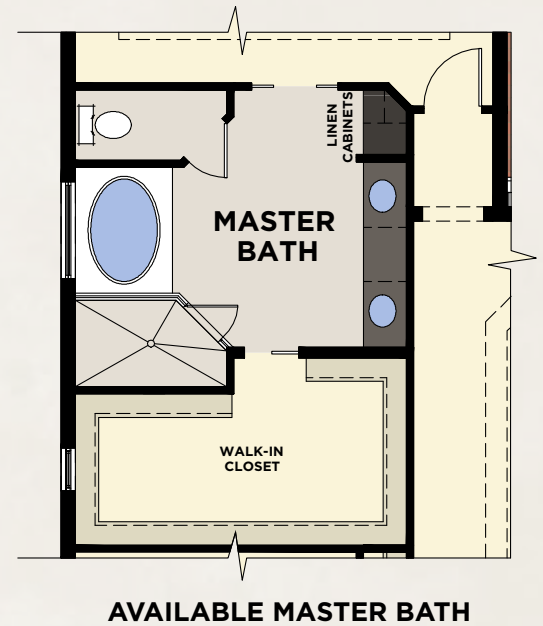
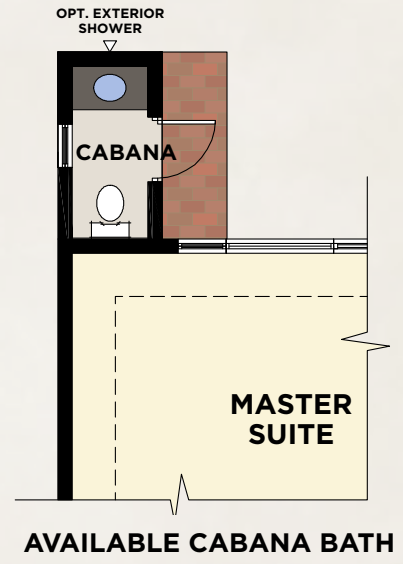
ELEVATION A (3-CAR)





# INVERNESS II

## AVAILABLE ELEVATIONS & FLOORPLAN OPTIONS



**with available Bedroom #4/  
Bath #4 or Media Room  
and 2-Car Garage**

Total - A/C Sq. Ft.	2,999
2-Car Garage	477
Covered Entry	78
Covered Screened Lanai	352
<b>Total Sq. Ft.</b>	<b>3,906</b>





## THE PALOMINO

Living Area	2,776 Sq. Ft.
Lanai	201 Sq. Ft.
Entry	74 Sq. Ft.
Garage	487 Sq. Ft.
<b>Total Area</b>	<b>3,538 Sq. Ft.</b>



Three Bedrooms plus Den, Three Baths,  
Family Room and Two-Car Garage





2013 PLAN

*Jasmine II*

Three Bedroom, Three and 1/2 Bath, Great Room,  
Dining Room, Study, Outdoor Living and 3-Car Garage

LIVING AREA . . . . .	2,884 sq. ft.
ENTRY . . . . .	33 sq. ft.
OUTDOOR LIVING . . . . .	406 sq. ft.
GARAGE . . . . .	802 sq. ft.
<b>TOTAL AREA . . . . .</b>	<b>4,125 sq. ft.</b>



In keeping with our policy of continual research and improvement and because alterations may become necessary due to code requirements, Stock Construction reserves the right to change plans, renderings, dimensions and information without notice or obligation. All renderings are artist's concept and approximate. 11/2013



# PRESTWICK GRAND™

**2,905 A/C SQ. FT. w/ 2-CAR GARAGE**

2 Bedrooms, Study, Sitting Room, 2½ Baths, 2-Car Garage



Total - A/C Sq. Ft.	<b>2,905</b>
2-Car Garage	<b>491</b>
Covered Entry	<b>45</b>
Covered Screened Lanai	<b>345</b>
<b>Total Sq. Ft.</b>	<b>3,786</b>

Front elevation window configurations change per elevation chosen



2013 PLAN

## *Greenbriar II*

Three Bedroom, Four Bath, Living Room, Family Room, Dining Room, Study, Outdoor Living and 3-Car Garage

LIVING AREA .....	2,949 sq. ft.
ENTRY .....	50 sq. ft.
OUTDOOR LIVING .....	710 sq. ft.
GARAGE .....	708 sq. ft.
TOTAL AREA .....	4,417 sq. ft.





## THE COVINGTON

Living Area	3,021 Sq. Ft.
Lanai	476 Sq. Ft.
Entry	29 Sq. Ft.
Garage	516 Sq. Ft.
<b>Total Area</b>	<b>4,042 Sq. Ft.</b>

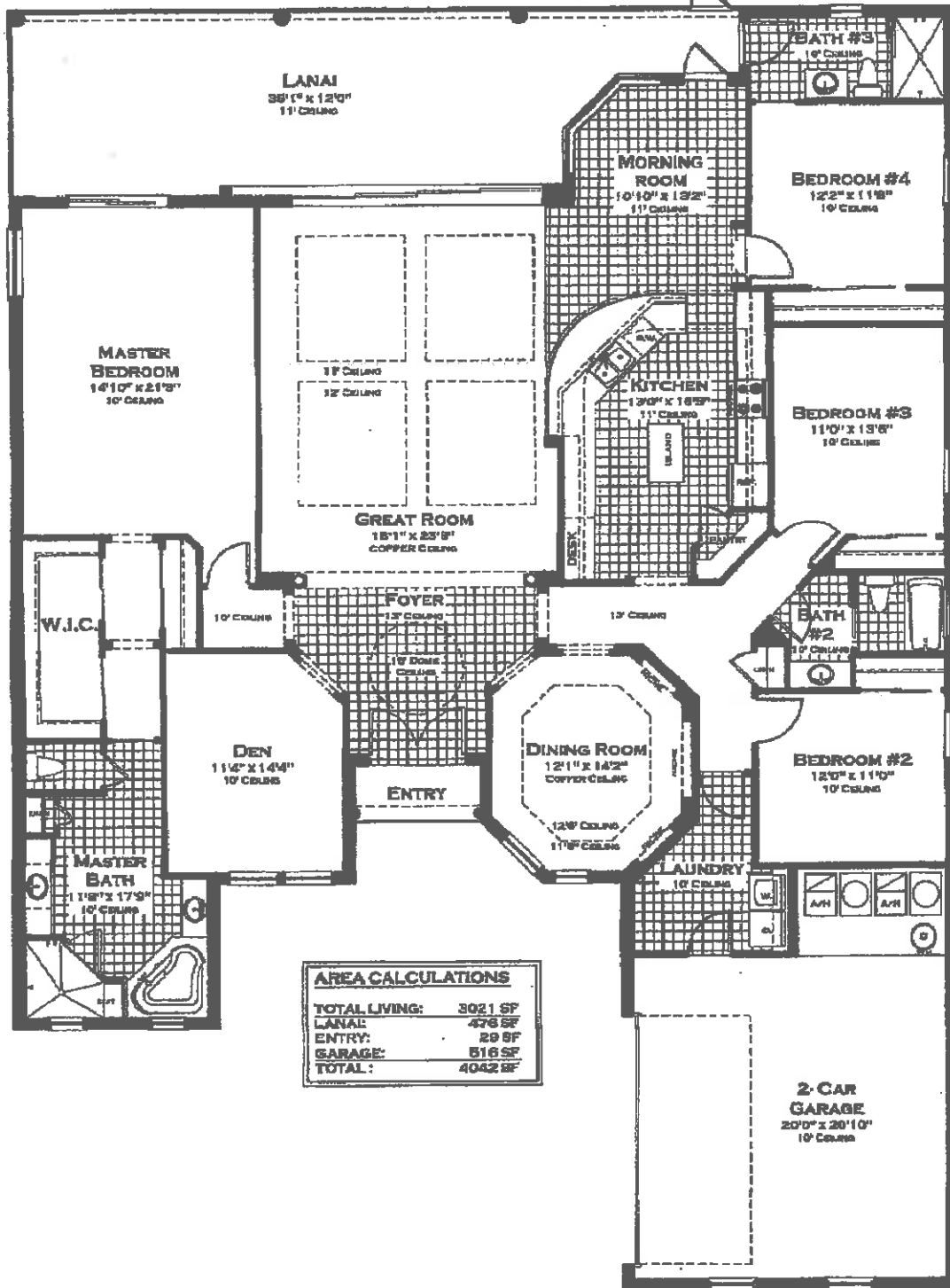


Four Bedrooms plus Den, Three Baths,  
Morning Room and Two-Car Garage



# WICKLOW AT TWIN EAGLES COVINGTON

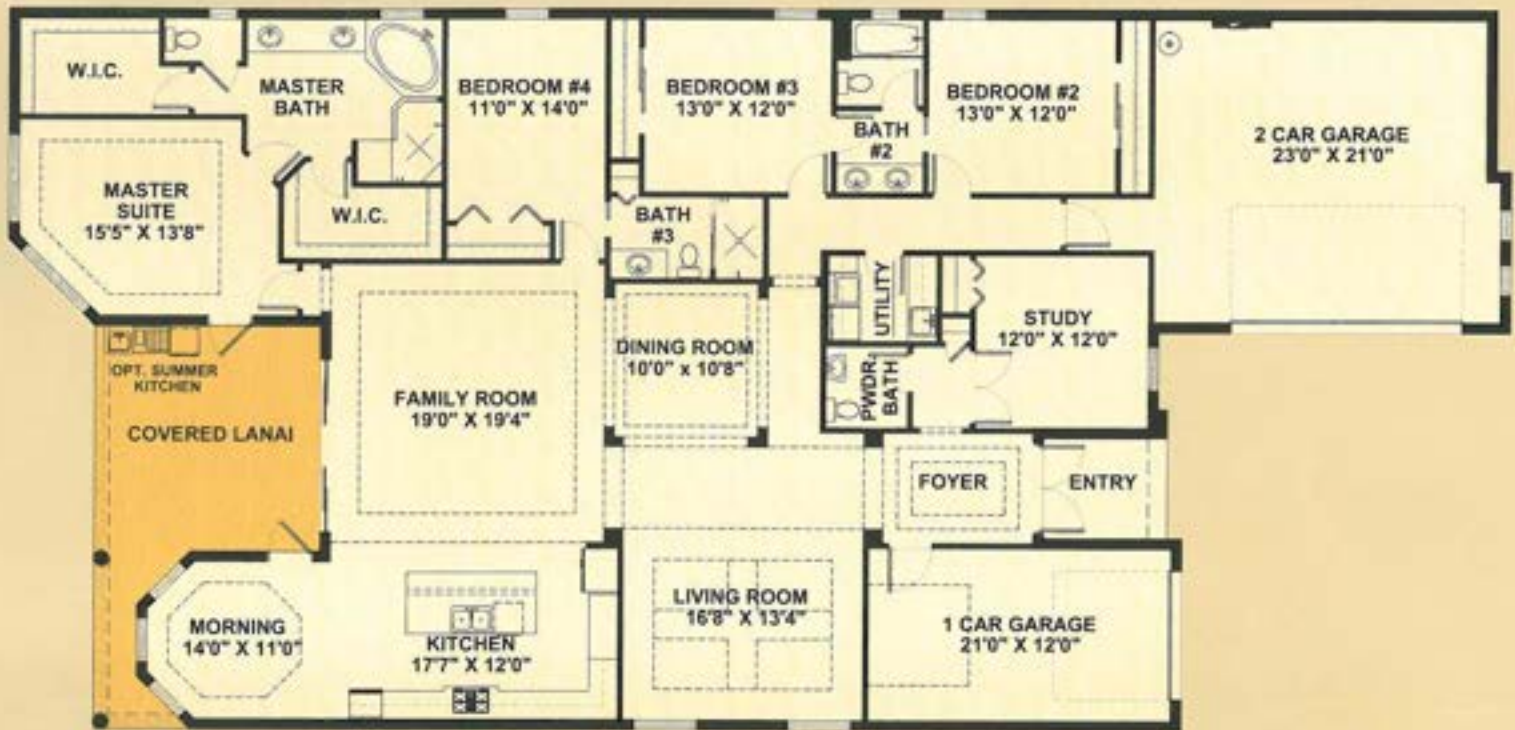
4 BEDROOMS, 3 BATH, GREAT ROOM, DEN, DINING ROOM,  
AND 2-CAR GARAGE



AREA CALCULATIONS	
TOTAL LIVING:	3021 SF
LANAI:	478 SF
ENTRY:	29 SF
GARAGE:	516 SF
TOTAL:	4042 SF

## CENTEX HOMES

CONCEPTUAL PLAN ONLY - ACTUAL PLAN MAY VARY ©2007 CENTEX HOMES -  
REVISED: 10-15-07



2013 PLAN

*Orchid II*

Four Bedroom, Three and 1/2 Bath, Living Room,  
Family Room, Dining Room, Study,  
Outdoor Living and 3-Car Garage

LIVING AREA	3,158 sq. ft.
ENTRY	60 sq. ft.
OUTDOOR LIVING	296 sq. ft.
GARAGE	843 sq. ft.
<b>TOTAL AREA</b>	<b>4,357 sq. ft.</b>



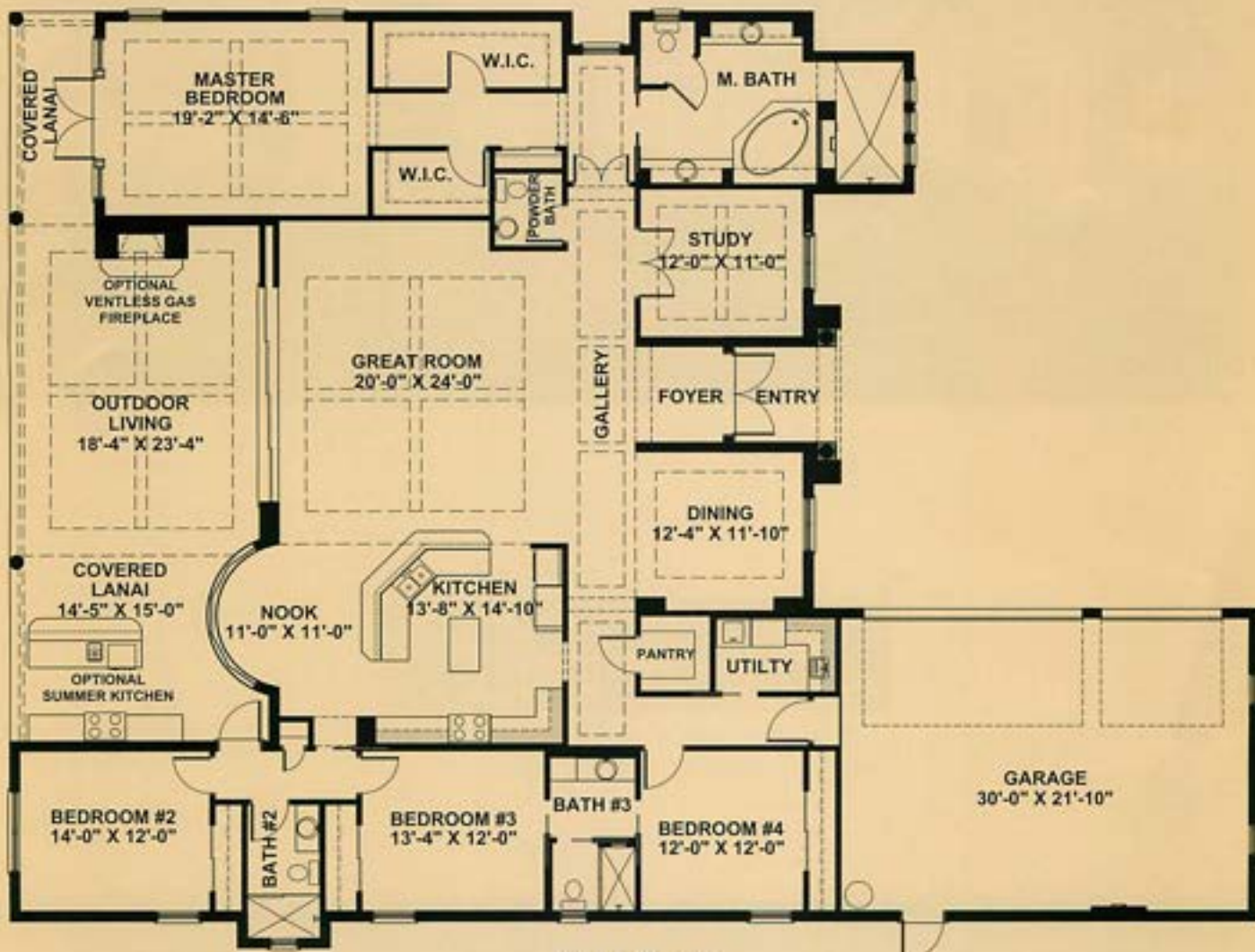




## Muirfield III

Four Bedroom, Three and 1/2 Bath, Great Room, Nook, Study, Covered Lanai, Three-Car Garage

LIVING AREA .....	3,255 sq. ft.
ENTRY .....	68 sq. ft.
COVERED LANAI .....	782 sq. ft.
GARAGE .....	718 sq. ft.
<b>TOTAL AREA .....</b>	<b>4,823 sq. ft.</b>



2013 PLAN





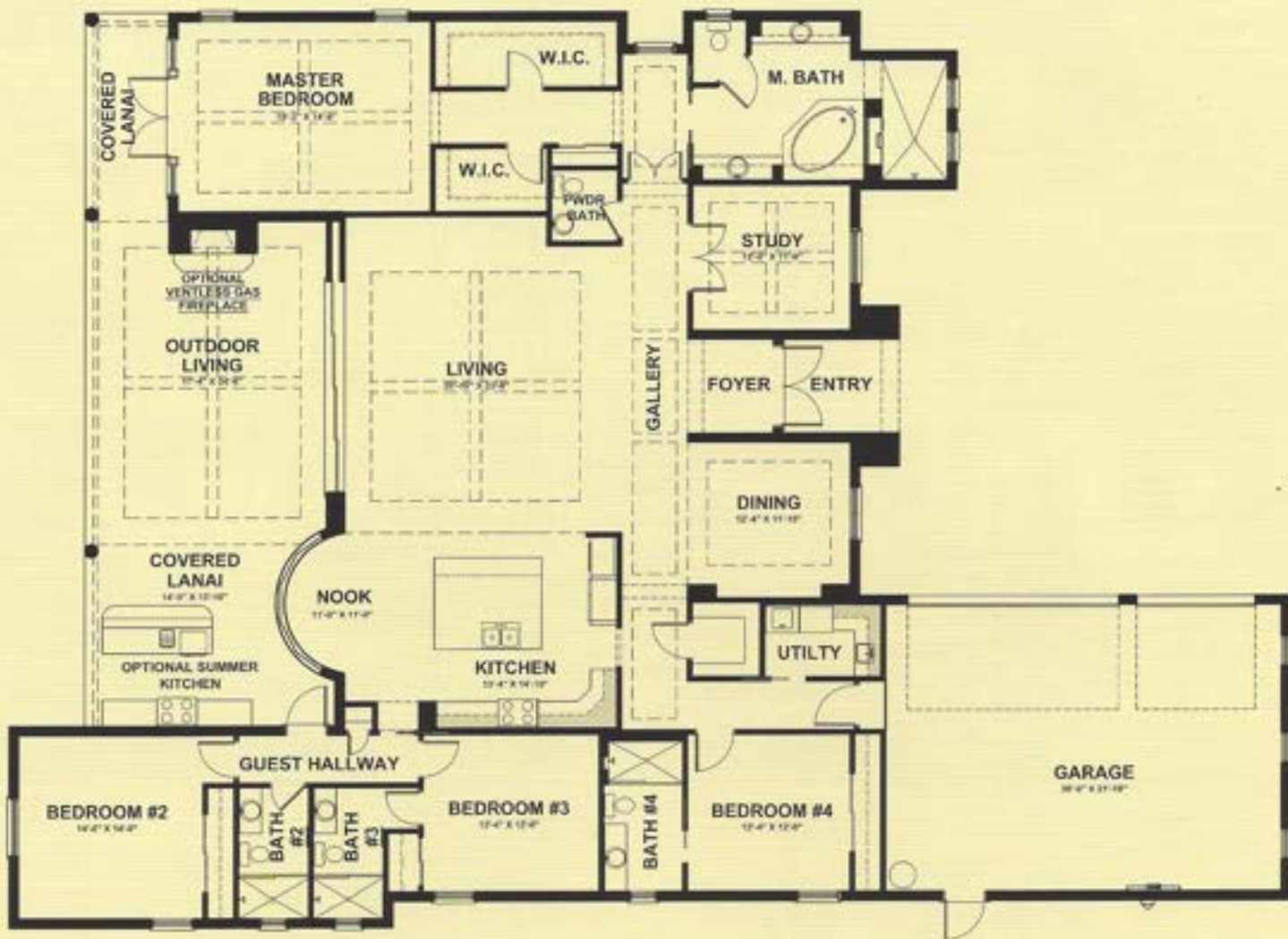
STOCK *when QUALITY matters*



Four Bedroom, Three and 1/2 Bath, Great Room, Nook,  
Study, Covered Lanai, Three-Car Garage

*Sturfield III*





## *Muirfield V*

Four Bedroom, Four and 1/2 Bath, Living Room,  
Dining Room, Study, Outdoor Living  
and 3-Car Garage

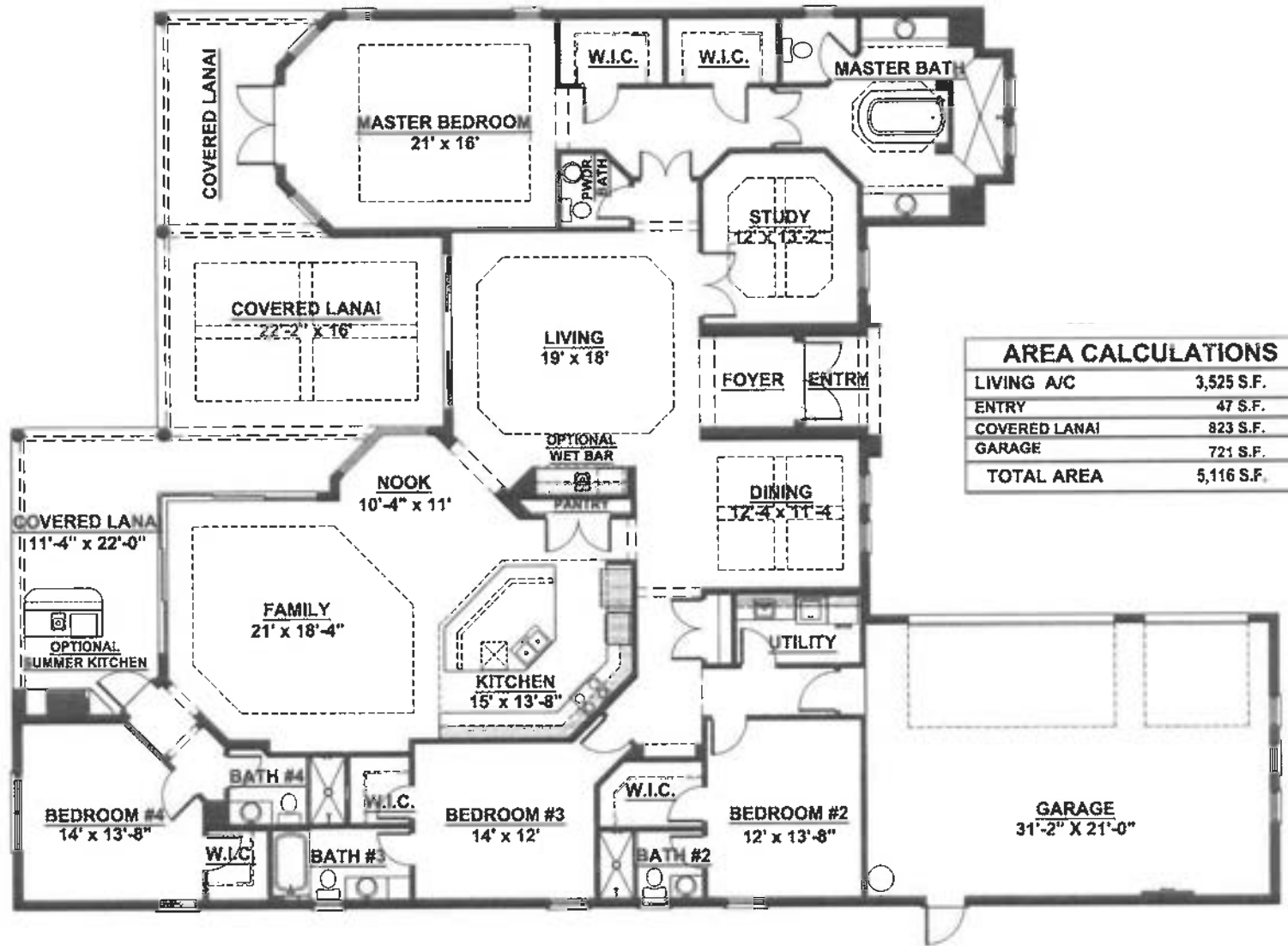
LIVING AREA	3,375 sq. ft.
ENTRY	78 sq. ft.
OUTDOOR LIVING	782 sq. ft.
GARAGE	718 sq. ft.
<b>TOTAL AREA</b>	<b>4,953 sq. ft.</b>





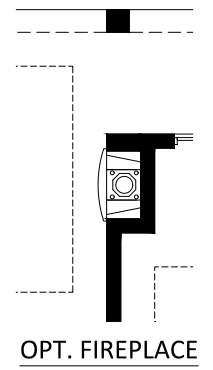


LIVING AREA: 3522 SQ. FT.



AREA CALCULATIONS	
LIVING A/C	3,525 S.F.
ENTRY	47 S.F.
COVERED LANAI	823 S.F.
GARAGE	721 S.F.
<b>TOTAL AREA</b>	<b>5,116 S.F.</b>





THE GLENMORE MODEL AREA SUMMARY	
FLOOR PLAN	
LIVING A/C	3,591 S.F.
ENTRY	76 S.F.
GARAGE/STORAGE	793 S.F.
OUTDOOR LIVING	995 S.F.
<b>TOTAL A/C</b>	<b>3,591 S.F.</b>
<b>GRAND TOTAL</b>	<b>5,455 S.F.</b>
DIMENSIONS 69'-8" X 104'-8"	

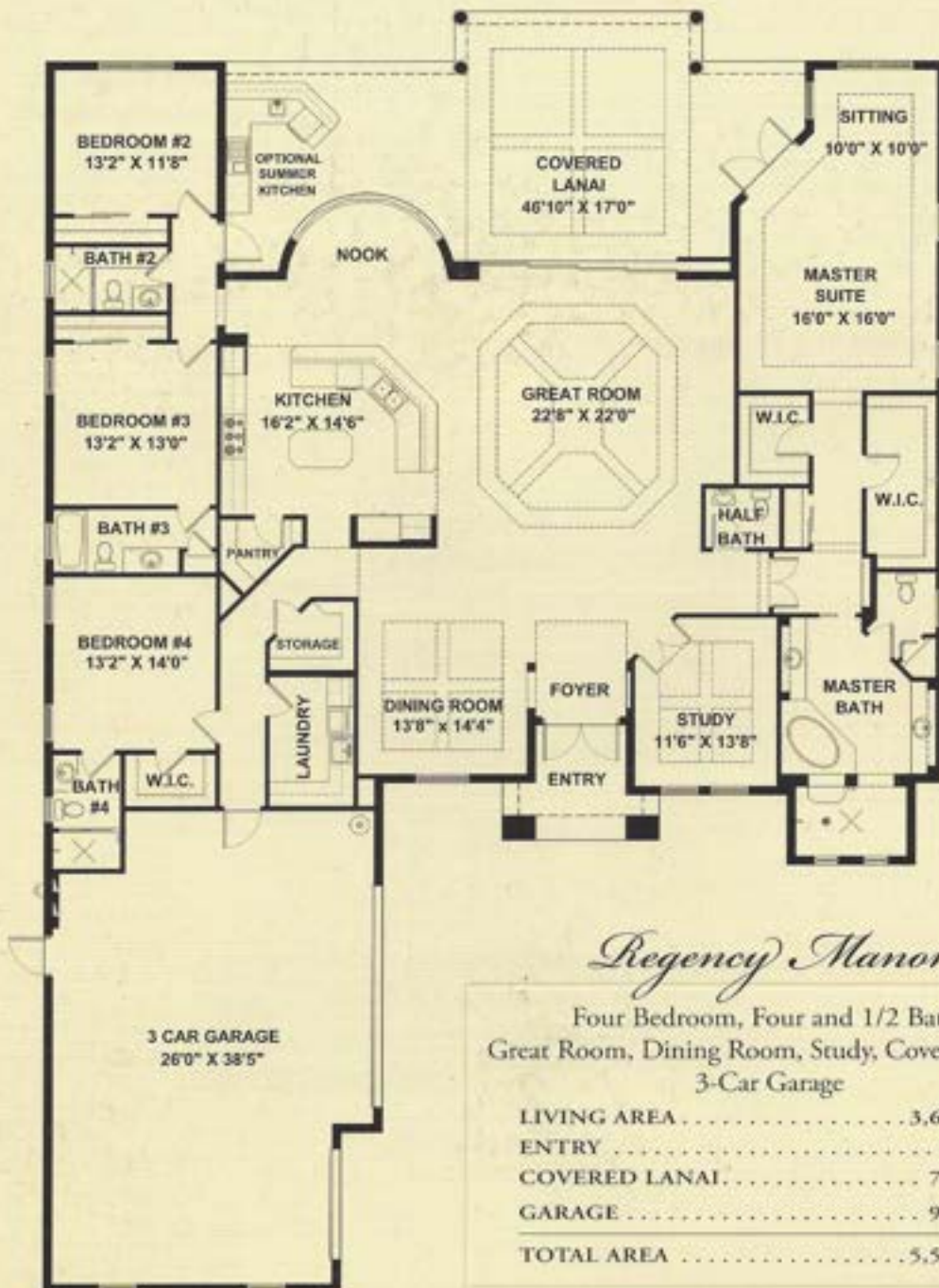


TOTAL UNDER AIR	3,594 sq. ft.
Garage	817 sq. ft.
Covered Areas	1,006 sq. ft.
TOTAL UNDER ROOF	5,417 sq. ft.
Lanai Pool	3,355 sq. ft.
TOTAL AREA	8,772 sq. ft.





POOL DECK



*Regency Manor*

Four Bedroom, Four and 1/2 Bath,  
Great Room, Dining Room, Study, Covered Lanai,  
3-Car Garage

LIVING AREA .....	3,699 sq. ft.
ENTRY .....	91 sq. ft.
COVERED LANAI .....	757 sq. ft.
GARAGE .....	997 sq. ft.
<b>TOTAL AREA .....</b>	<b>5,544 sq. ft.</b>

2639 PROFESSIONAL CIRCLE | SUITE 101 | NAPLES, FL 34119 | 239.592.7344 | STOCKDEVELOPMENT.COM



In keeping with our policy of continual research and improvement and because alterations may become necessary due to code requirements, Stock Construction reserves the right to change plans, renderings, dimensions and information without notice or obligation. All renderings are artist's concept and approximate. 4/2016



# TURNBERRY GRAND<sup>SM</sup>

3,811 A/C SQ. FT. <sup>SM</sup> 3-CAR GARAGE

3 Bedrooms, Study, Bonus Room, 3 Baths, Two Powder Baths, 3-Car Garage



Decorated Model

Front elevation window configurations change per elevation chosen

1ST FLOOR

2ND FLOOR



ELEVATION A



TWINEAGLES

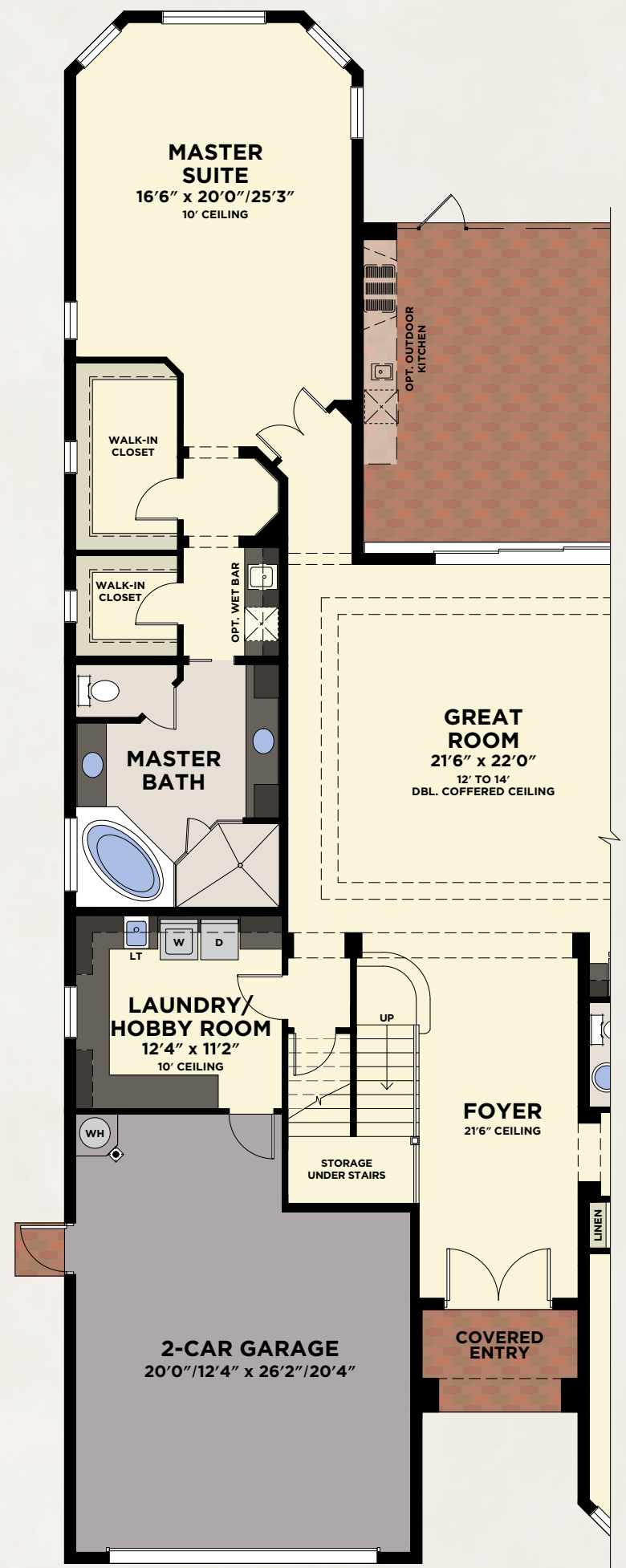


# TURNBERRY GRAND™

## AVAILABLE ELEVATIONS & FLOORPLAN OPTIONS



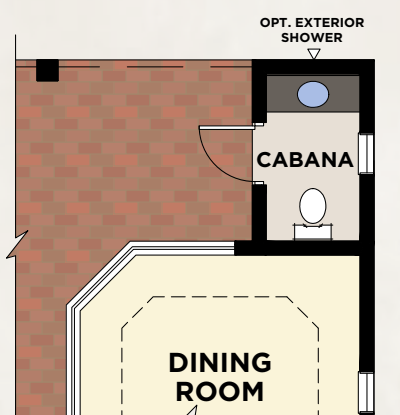
Decorated Model



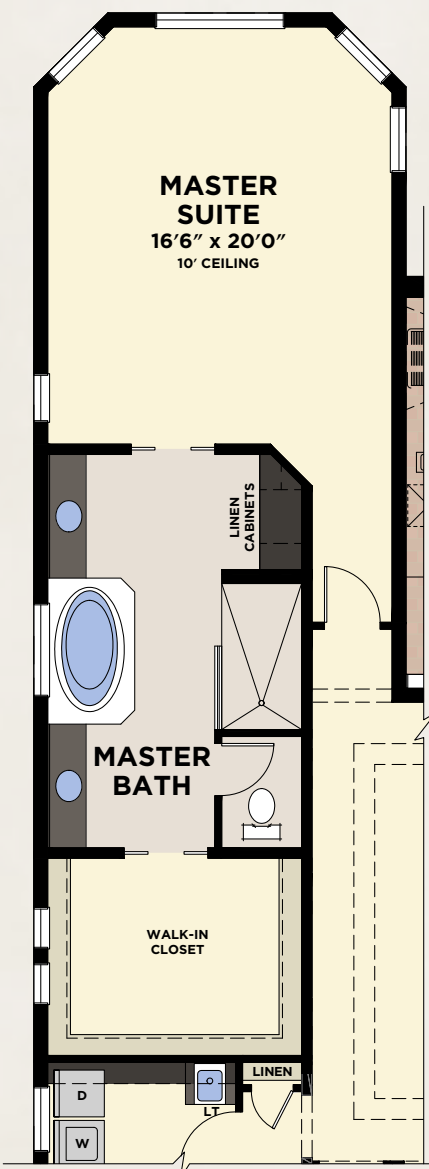
AVAILABLE LAUNDRY/HOBBY ROOM AND 2-CAR GARAGE

*with available  
Laundry/Hobby Room  
and 2-Car Garage*

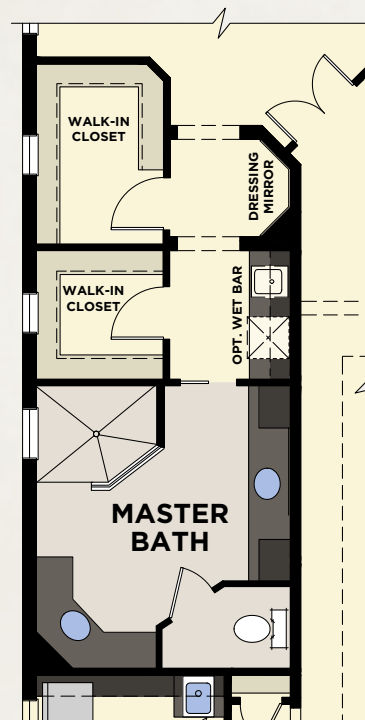
First Floor Living	3,051
Second Floor Living	889
Total - A/C Sq. Ft.	3,940
2-Car Garage	519
Covered Deck	249
Covered Entry	57
Covered Screened Lanai	453
<b>Total Sq. Ft.</b>	<b>5,218</b>



AVAILABLE CABANA BATH



AVAILABLE MASTER BATH



AVAILABLE MASTER BATH  
w/SHOWER ONLY





# TURNBERRY GRAND™

AVAILABLE ELEVATIONS & FLOORPLAN OPTIONS



3D Decorated Model



AVAILABLE LAUNDRY/HOBBY ROOM AND 2-CAR GARAGE

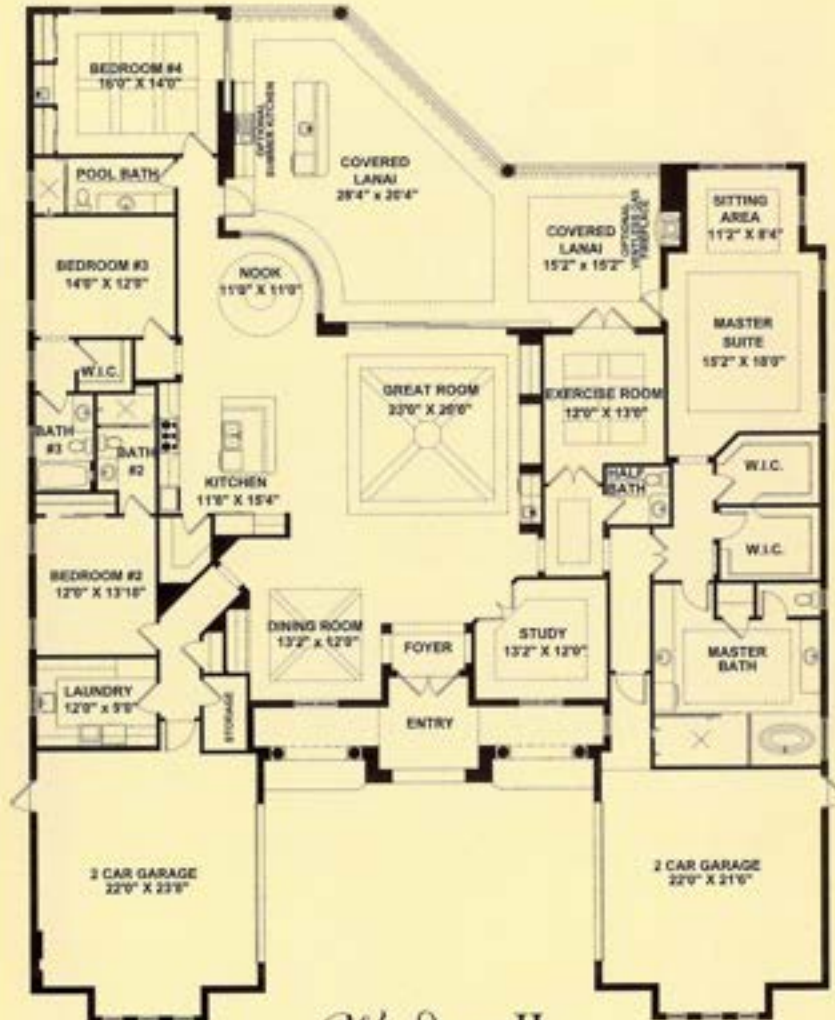
with available  
Laundry/Hobby Room  
and 2-Car Garage

First Floor Living	3,051
Second Floor Living	889
Total - A/C Sq. Ft.	3,940
2-Car Garage	519
Covered Deck	249
Covered Entry	57
Covered Screened Lanai	453
Total Sq. Ft.	5,218



TWINEAGLES





*Windsor II*

Four Bedroom, Four and 1/2 Bath, Great Room,  
Dining Room, Exercise Room, Study,  
Outdoor Living and Two 2-Car Garages

LIVING AREA . . . . .	4,155 sq. ft.
ENTRY . . . . .	238 sq. ft.
OUTDOOR LIVING . . . . .	967 sq. ft.
GARAGE . . . . .	1,213 sq. ft.
<b>TOTAL AREA . . . . .</b>	<b>6,573 sq. ft.</b>

2639 PROFESSIONAL CIRCLE | SUITE 101 | NAPLES, FL 34119 | 239.592.7344 | [STOCKDEVELOPMENT.COM](http://STOCKDEVELOPMENT.COM)

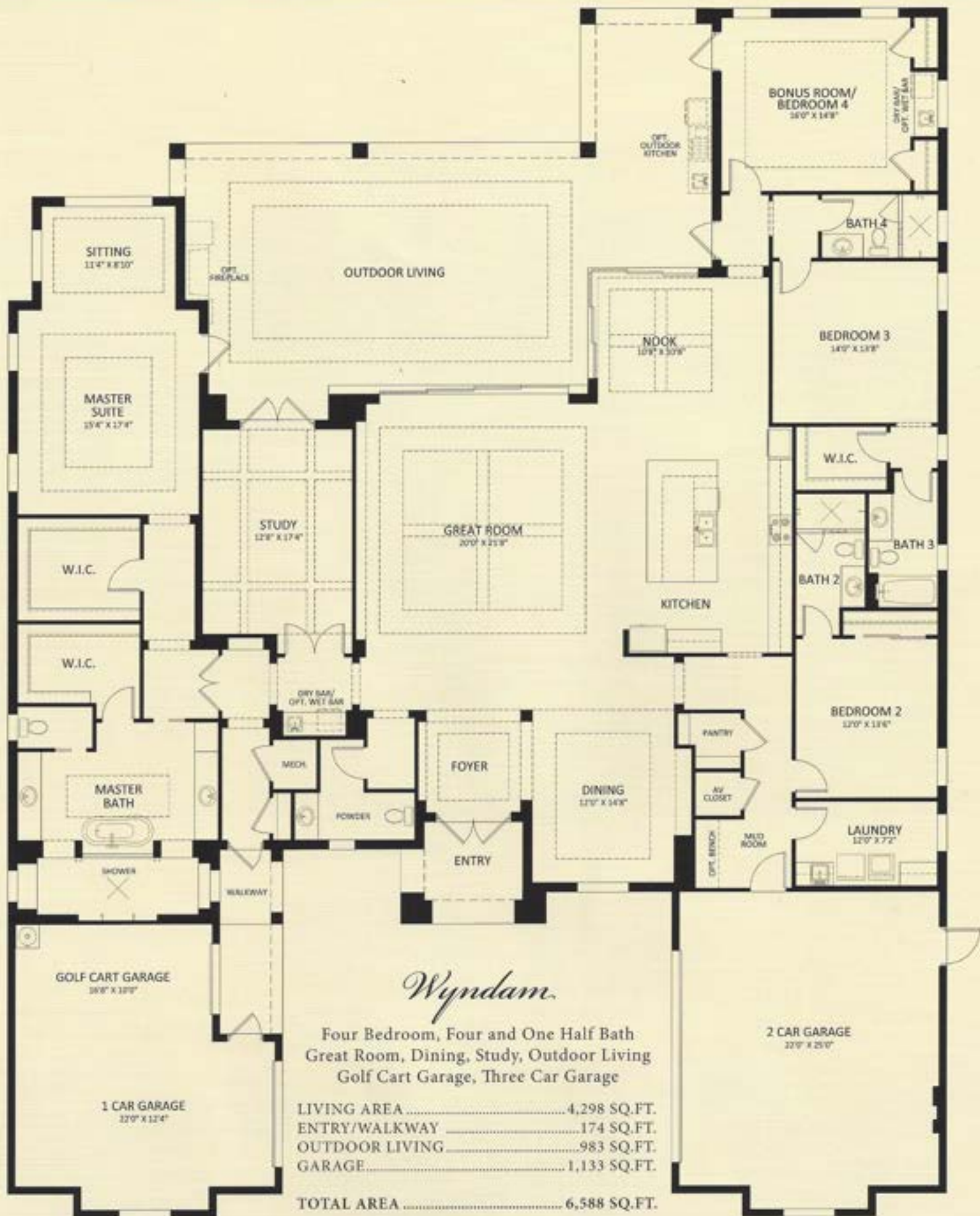


In keeping with our policy of continual research and improvement and because alterations may become necessary due to code requirements, Stock Construction reserves the right to change plans, renderings, dimensions and information without notice or obligation. All renderings are artist's concept and approximate. 10/2013







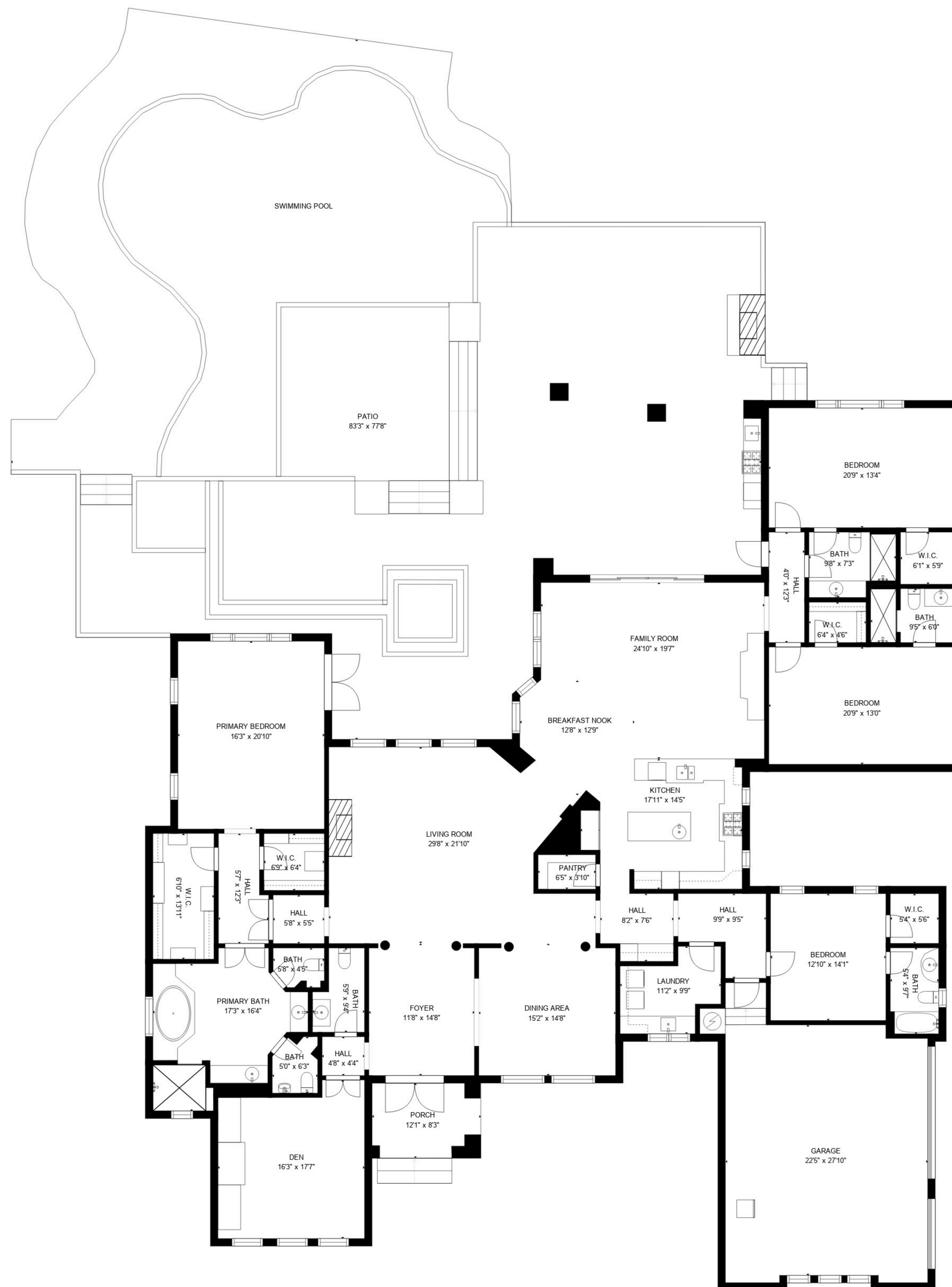


2639 PROFESSIONAL CIRCLE, SUITE 101 | NAPLES, FL 34119 | 239 592-7344 | STOCKDEVELOPMENT.COM



In keeping with our policy of continual research and improvement and because alterations may become necessary due to code requirements, Stock Construction reserves the right to change plans, renderings, dimensions and information without notice or obligation. All renderings are artist's concept and approximate.

CBC 1252429  
8/2017

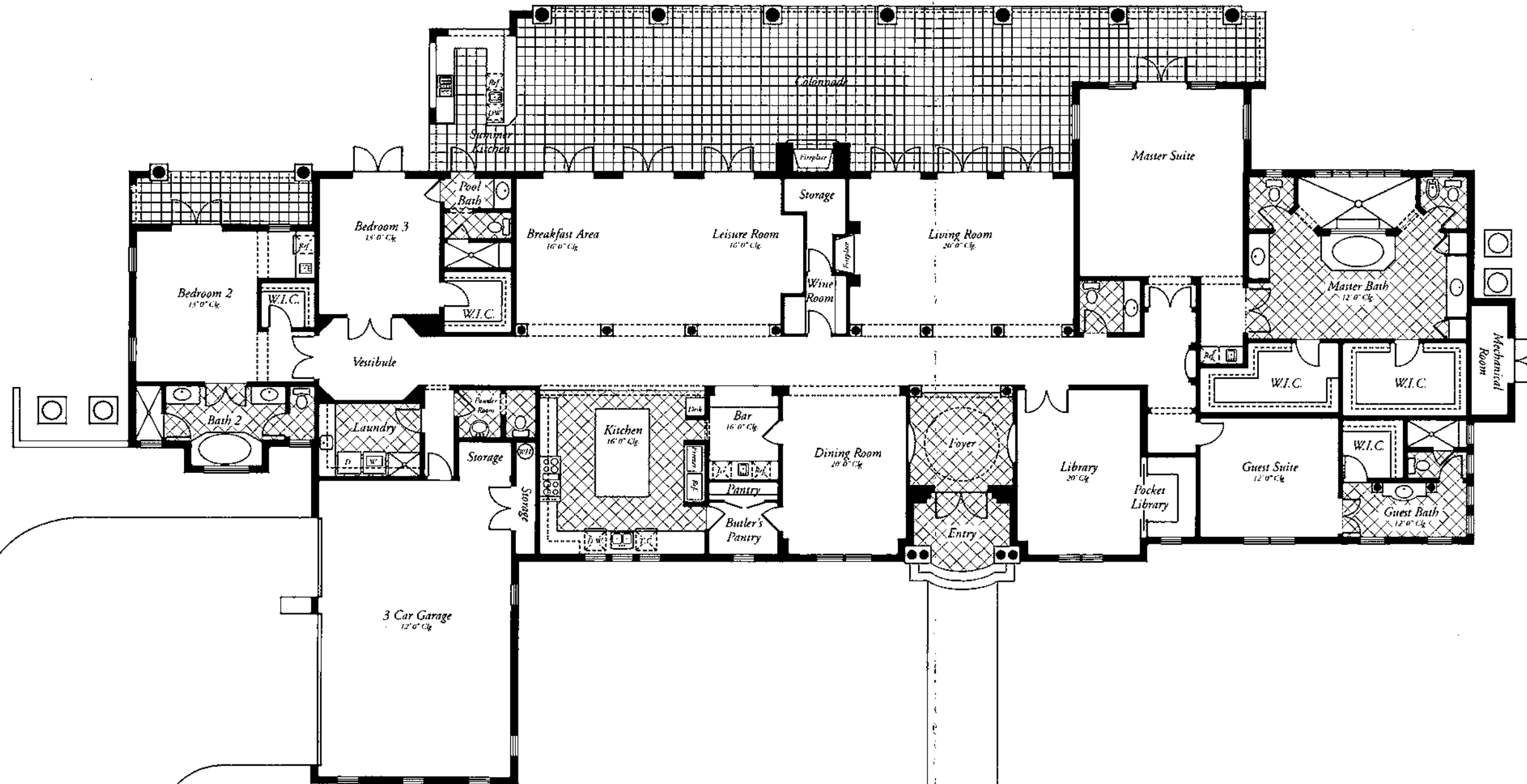


GROSS INTERNAL AREA  
 FLOOR 1: 4386 sq. ft, EXCLUDED AREAS:  
 GARAGE: 656 sq. ft, PATIO: 4648 sq. ft  
 PORCH: 101 sq. ft  
 TOTAL: 4386 sq. ft  
 SIZES AND DIMENSIONS ARE APPROXIMATE, ACTUAL MAY VARY.



## The Turnberry

This four-bedroom, four-and-two-half-bath model will offer 6,412 square feet of air-conditioned living area and 8,623 total square feet. The home also will include a large guest suite with morning bar and separate covered veranda, and a 1,700-square-foot covered lanai with arched colonnades and an outdoor fireplace. Located on a spacious one-and-a-half-acre homesite, the model overlooks a lake and the 10<sup>th</sup> hole of the Jack Nicklaus and Jack Nicklaus II co-designed golf course at The Club at TwinEagles, The Talon.



Living Area	6,412 Sq. Ft.
Entry	100 Sq. Ft.
Colonade	1,507 Sq. Ft.
Garage	846 Sq. Ft.
<b>Total Area</b>	<b>8,865 Sq. Ft.</b>