

## Floor Plans

These floor plans have been assembled as a resource for you. They may not be inclusive of every home in the community.

Please note that over time, owners may make modifications to spaces that may not be captured in these original floor plans.

Renderings are not a guarantee of space measurement. Interested parties should verify through their own secured services.





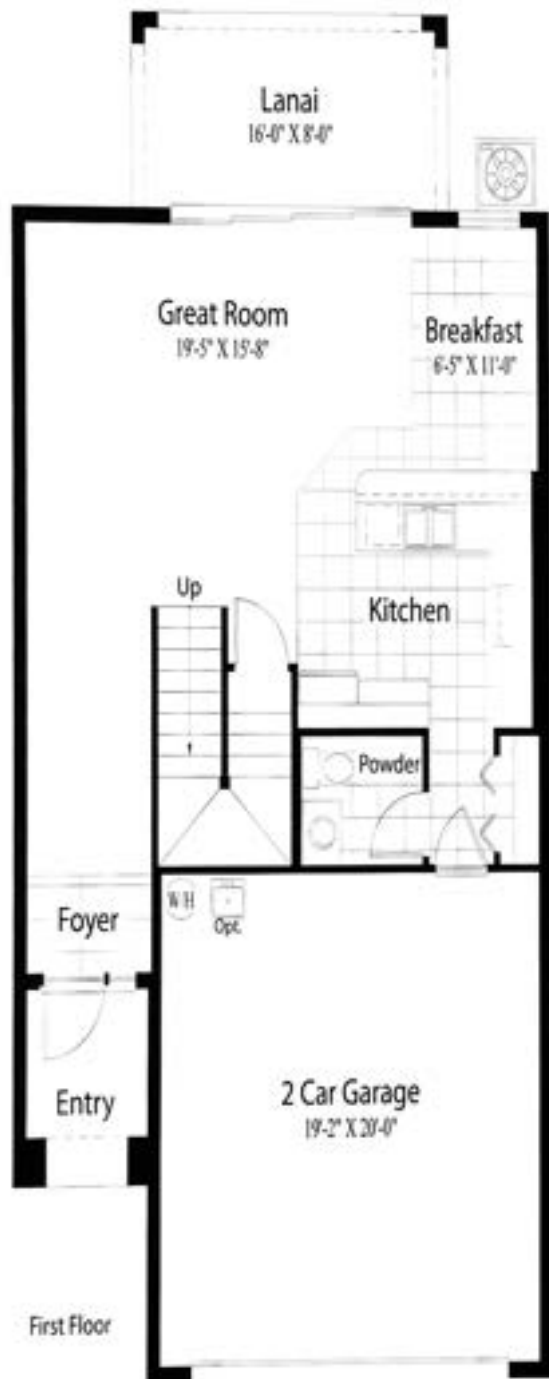
FIRST FLOOR



SECOND FLOOR

# OAKWOOD

2 Story, 3 Bedroom, 2 1/2 Baths, 2 Car Garage



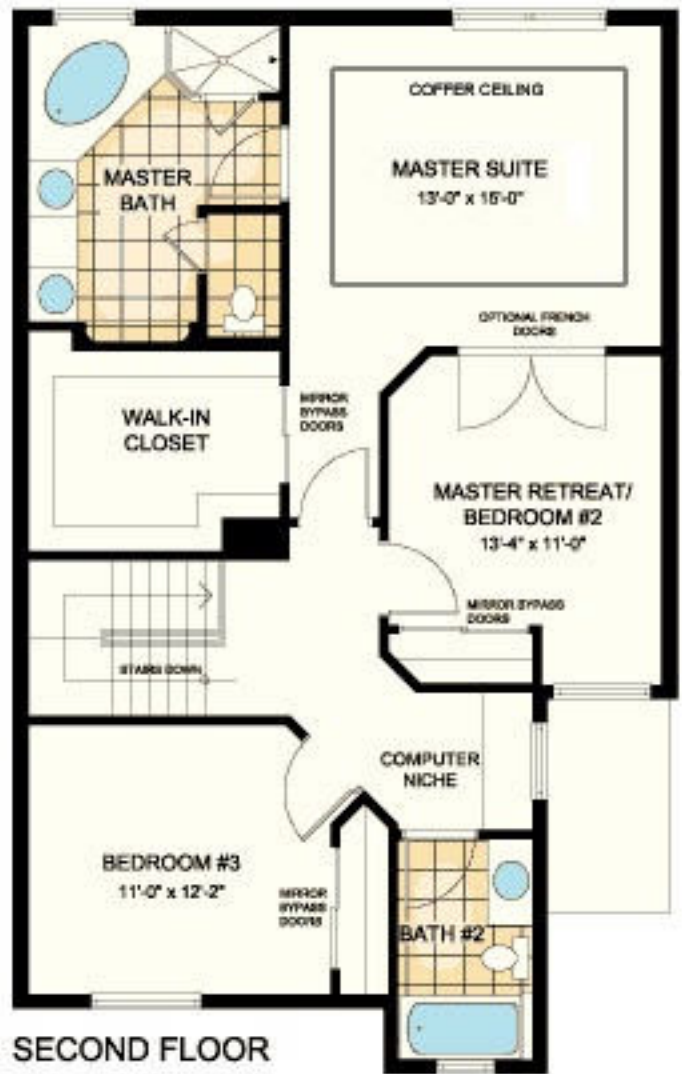
## Oakwood

2 Story, 3 Bedroom, 2 1/2 Baths, 2 Car Garage

1st Floor A/C Sq. Ftg.	757
2nd Floor A/C Sq. Ftg.	1043
Total A/C Sq. Ftg.	1800
Lanai Area	128
Garage Area	414
Entry Area	48
Total Area	2390



FIRST FLOOR



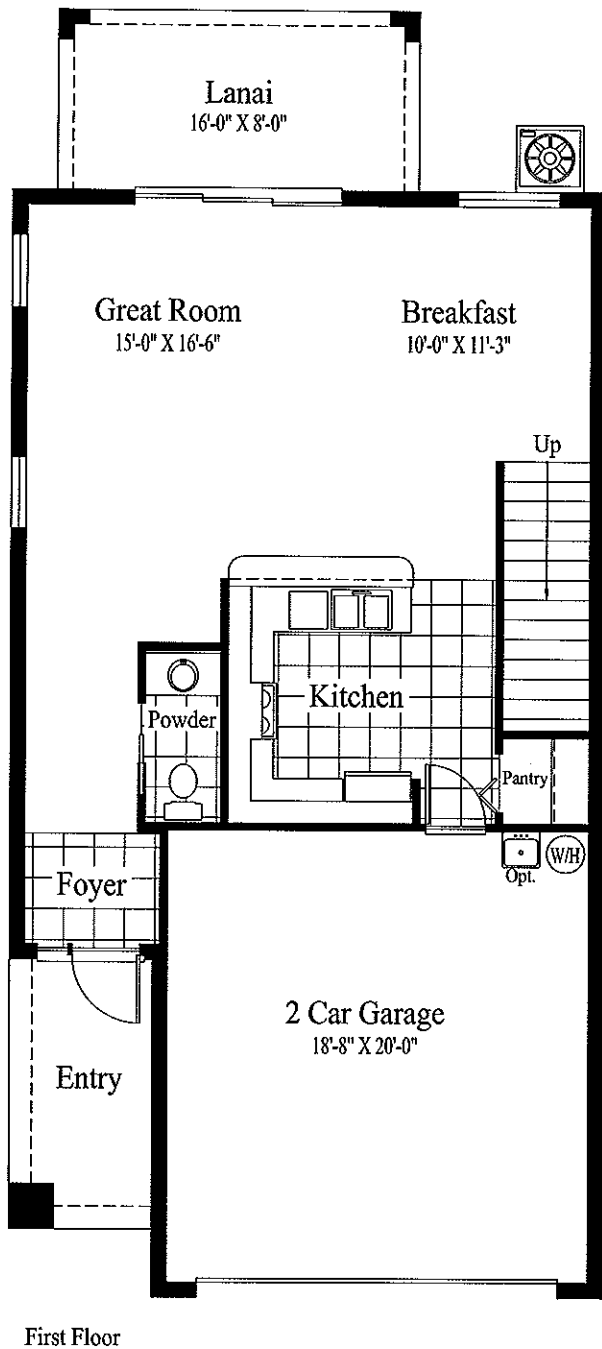
SECOND FLOOR

\_\_\_\_\_

\_\_\_\_\_

\_\_\_\_\_

# WESTWOOD

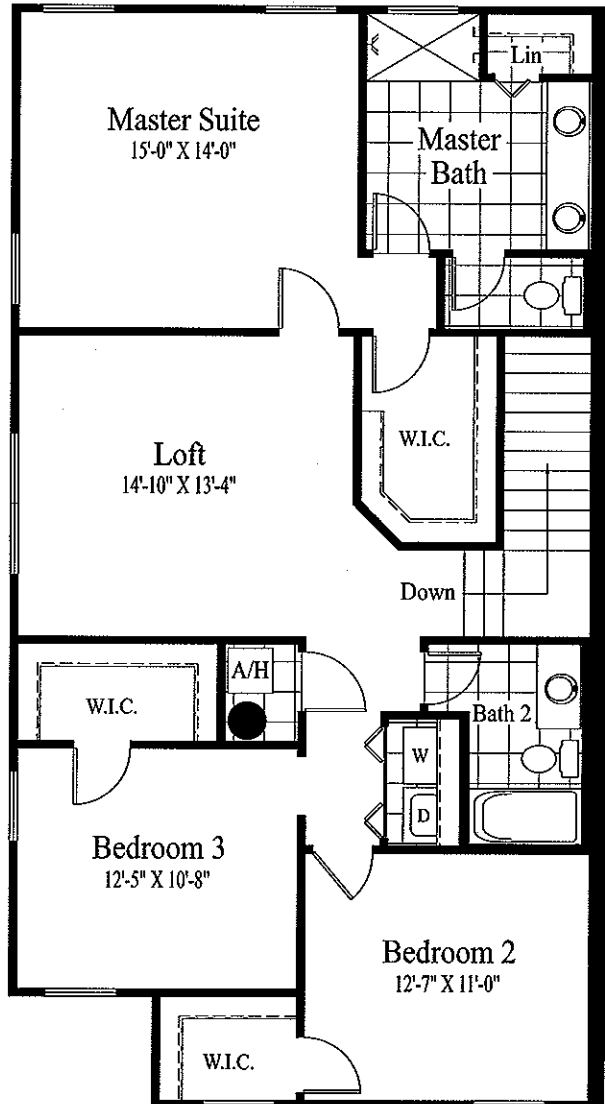


First Floor

## 1956-WESTWOOD

2 STORY, 3 BEDROOM, 2½ BATHS, LOFT,  
2 CAR GARAGE

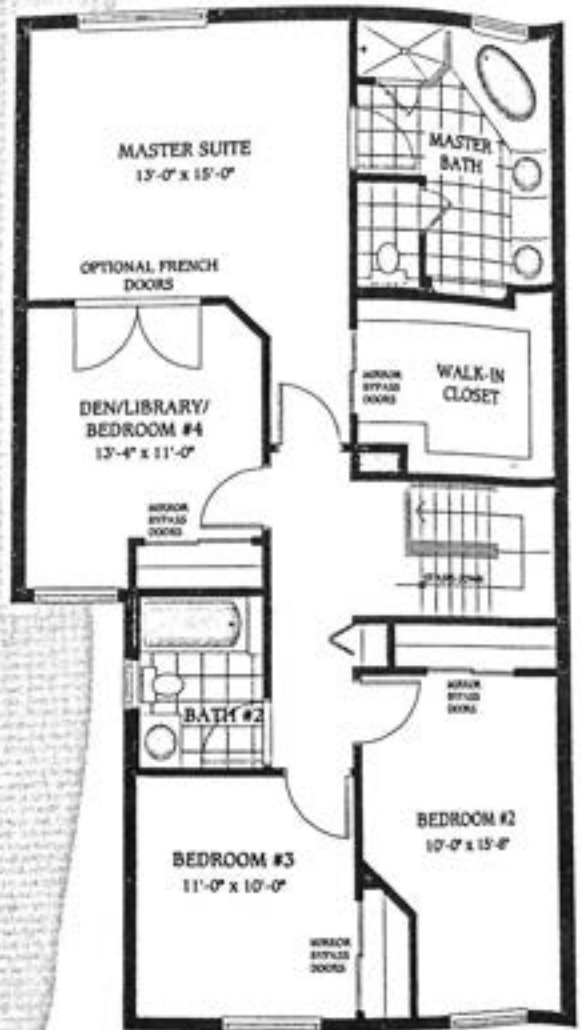
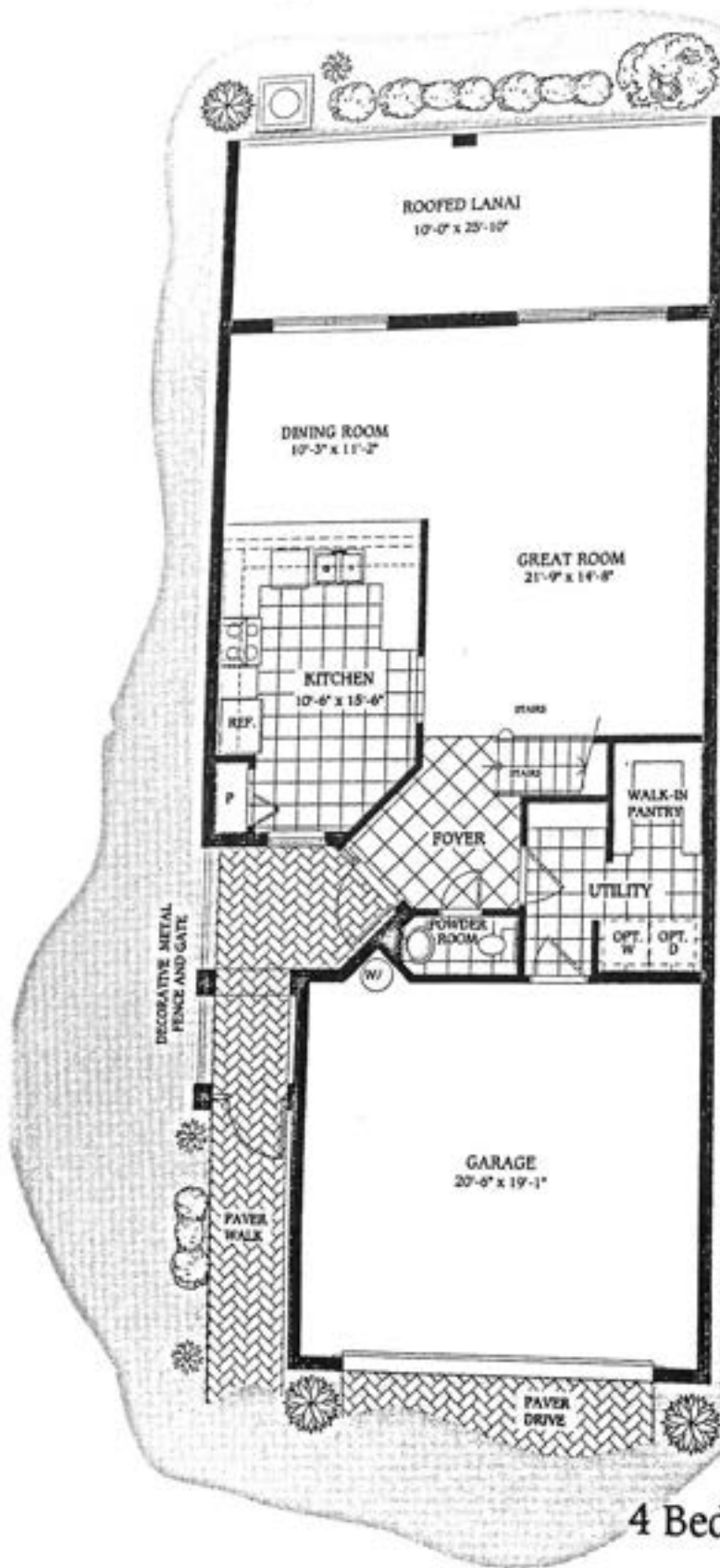
1ST FLOOR A/C SQ. FT.	776
2ND FLOOR A/C SQ. FT.	1180
TOTAL A/C SQ. FT.	1956
LANAI AREA	128
GARAGE	403
ENTRY	76
TOTAL	2563



Second Floor



Dimensions on the floorplans are approximate. Builder reserves the right to make reasonable modifications to the plans and specifications, including house orientation on lot and reversal. All drawings are the artist's concept. Rev. 3/22/12



SECOND FLOOR

# Devon

4 Bedroom, 2 1/2 Bath, 2-Car Garage, Roc

Air Conditioned Space  
 Roofed Lanai and Entry  
 2-Car Garage

2,002 Sq Ft  
 321 Sq Ft  
 437 Sq Ft





# Fairfax

3 Bedroom, 2½ Bath, 2-Car Garage, Roofed Lanai



SECOND FLOOR

Air Conditioned Space	2,276 Square Feet
Roofed Lanai and Entry	318 Square Feet
2-Car Garage	430 Square Feet
<b>Total Area</b>	<b>3,024 Square Feet</b>

Artist's Conception. All dimensions and specifications are approximate, and are subject to change without notice.